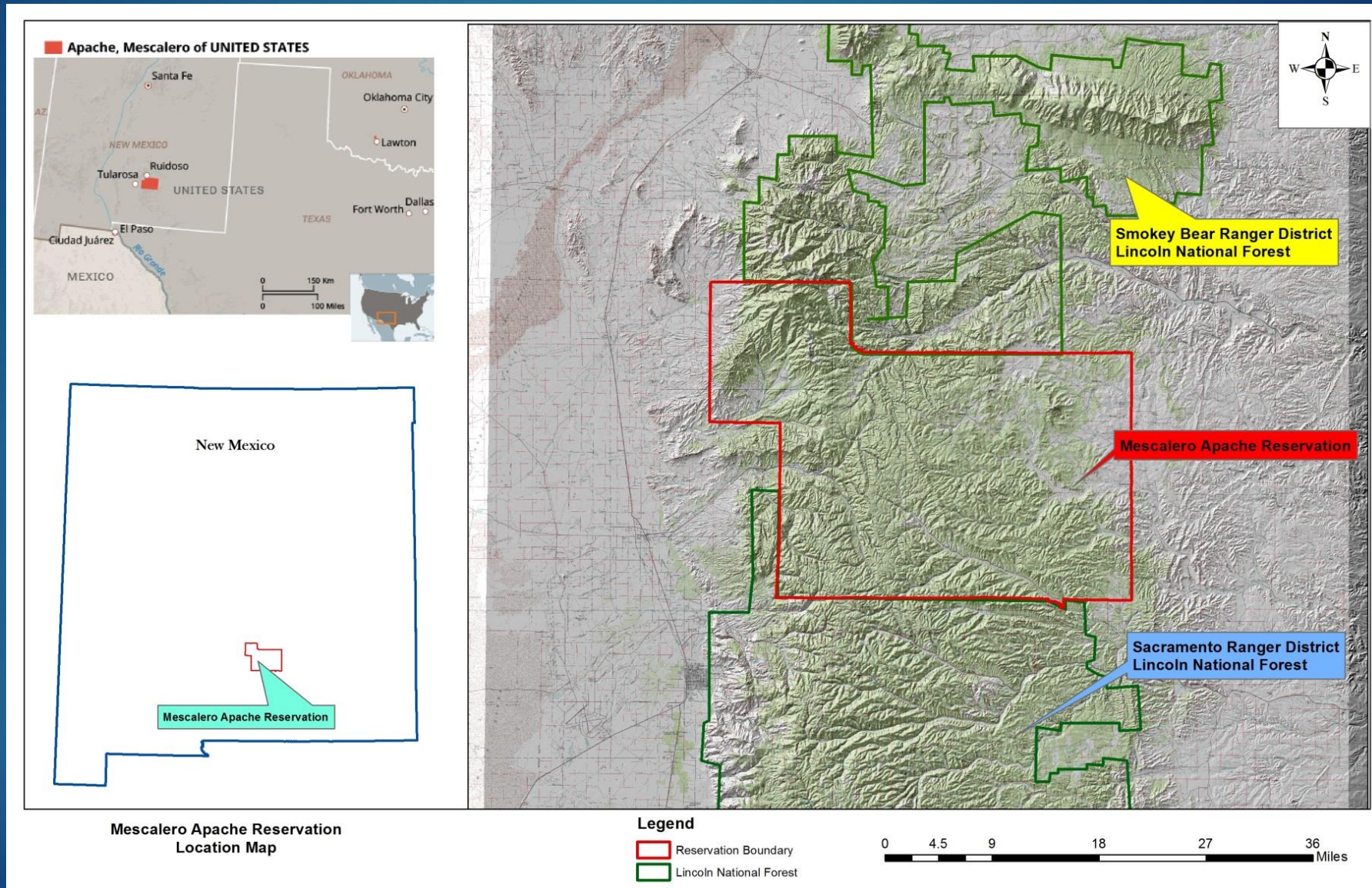


Mescalero Apache Tribe

Division of
Resource
Management &
Protection

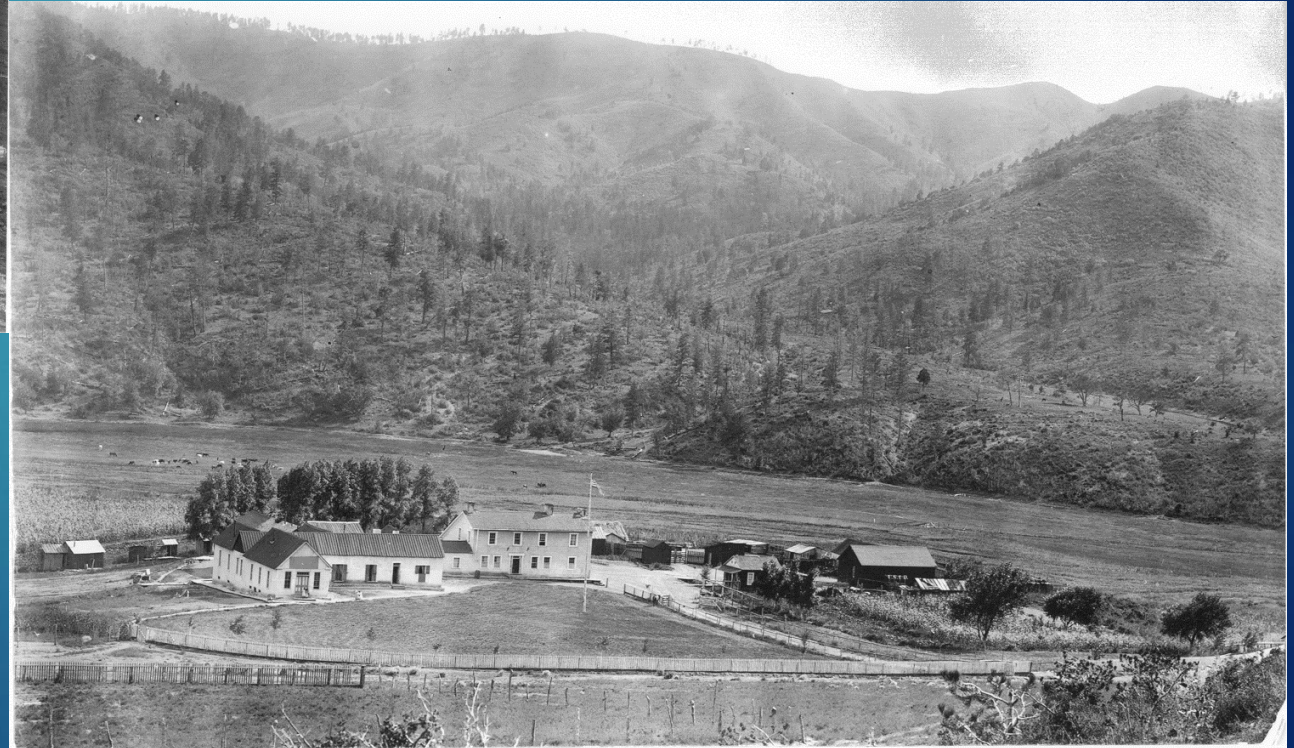
Mescalero Apache Reservation, ~460,000 Acres



Many changes in our landscape...



Photos taken circa 1900, when the floodplains where the main town of Mescalero is now located were largely uninhabited..



Landscape Changes

- Draining of wetlands & installation of tile drains in 1930's Civilian Conservation Corps (CCC) project
- Development into floodplains and wetlands
- Increased tree densities on slopes around Mescalero
- Introduction & proliferation of non-native species, such as Siberian Elm



Long History of Forest Management Work



Mescalero Forest Products

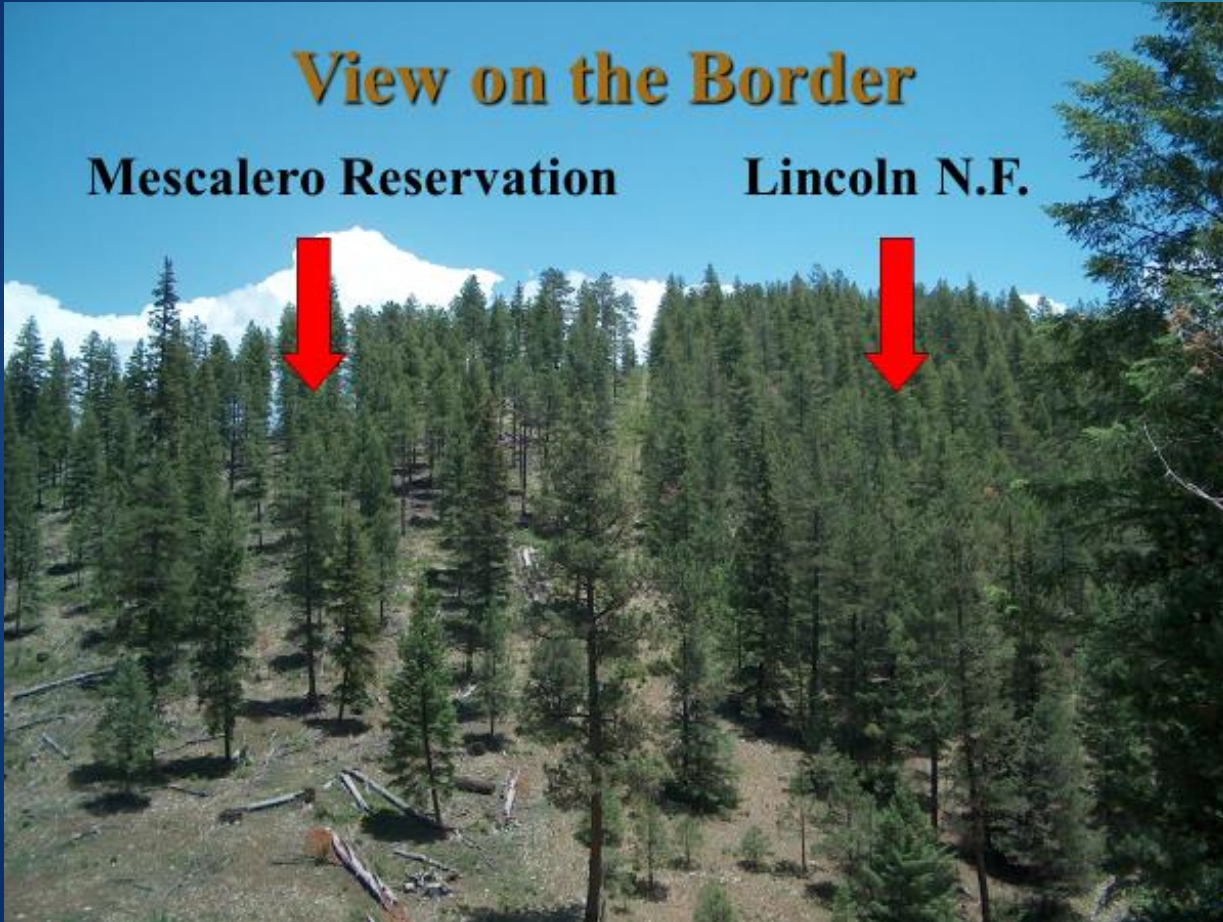
An Enterprise of the Mescalero Apache Tribe

We started by “armoring” along our southern boundary

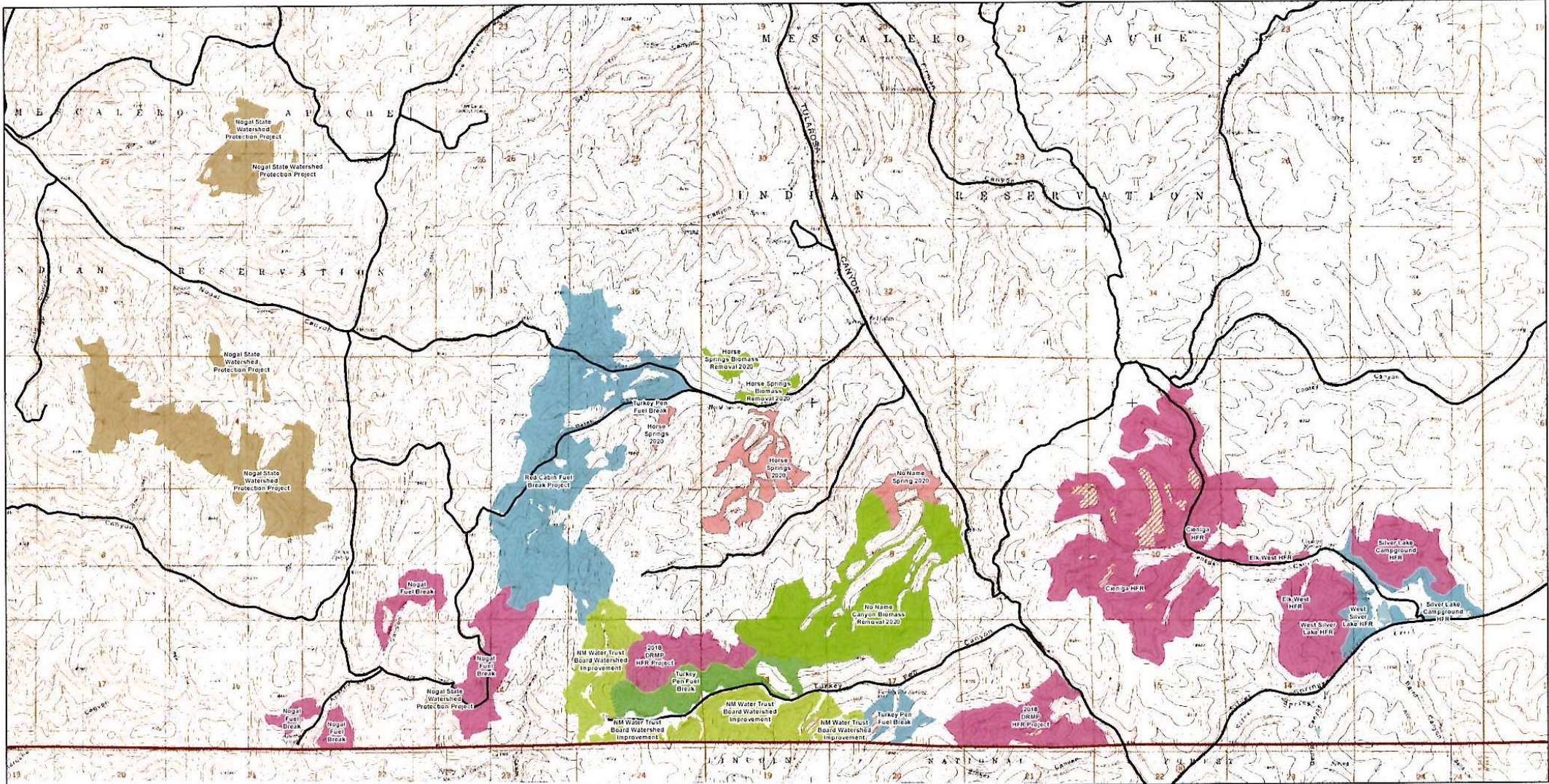
View on the Border

Mescalero Reservation

Lincoln N.F.



Hazardous Fuels Reduction Treatments 2014-2019



Legend

- BIA, Thinned, Lop, Pile, Completed. 1,104.2 ac
 BIA, Thinned, Lop, Pile, Completed. 189.5 ac
 BIA, Thinned, Lop, Scatter, Completed. 2612.7 ac
 BIA, Thinned, Lop, Scatter, Completed. 380.5 ac
 NM State, Thinned, Lop, Pile, Completed. 500 ac
 NM State, Thinned, Lop, Scatter, Completed. 920 ac
 Planned NM State, Biomass Removal and Thinning: 670.2 Acres
 Planned NM State, Thinning Only: 219.8 Acres
 Reservation Boundary

Total Completed Acreage: 5,706.9



E. Bell & W. Hornsby
6/5/2019



Commercial harvest used as first line management tool



Uneven-aged management - Preferred



Focus on removing severe dwarf mistletoe infection



Follow-up fuels treatments with Tribal Thinning Crew



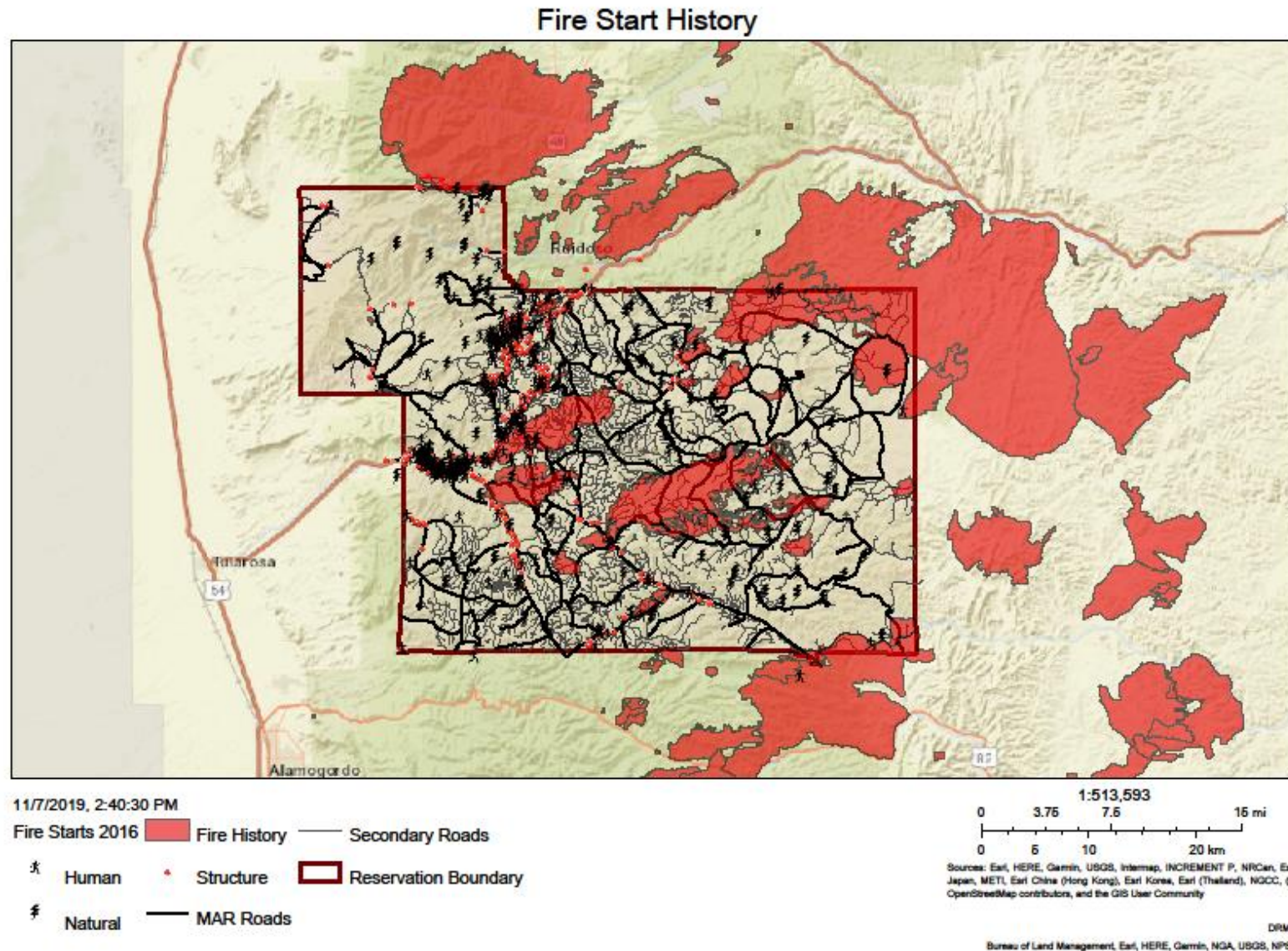
And prescribed burning, when we can...



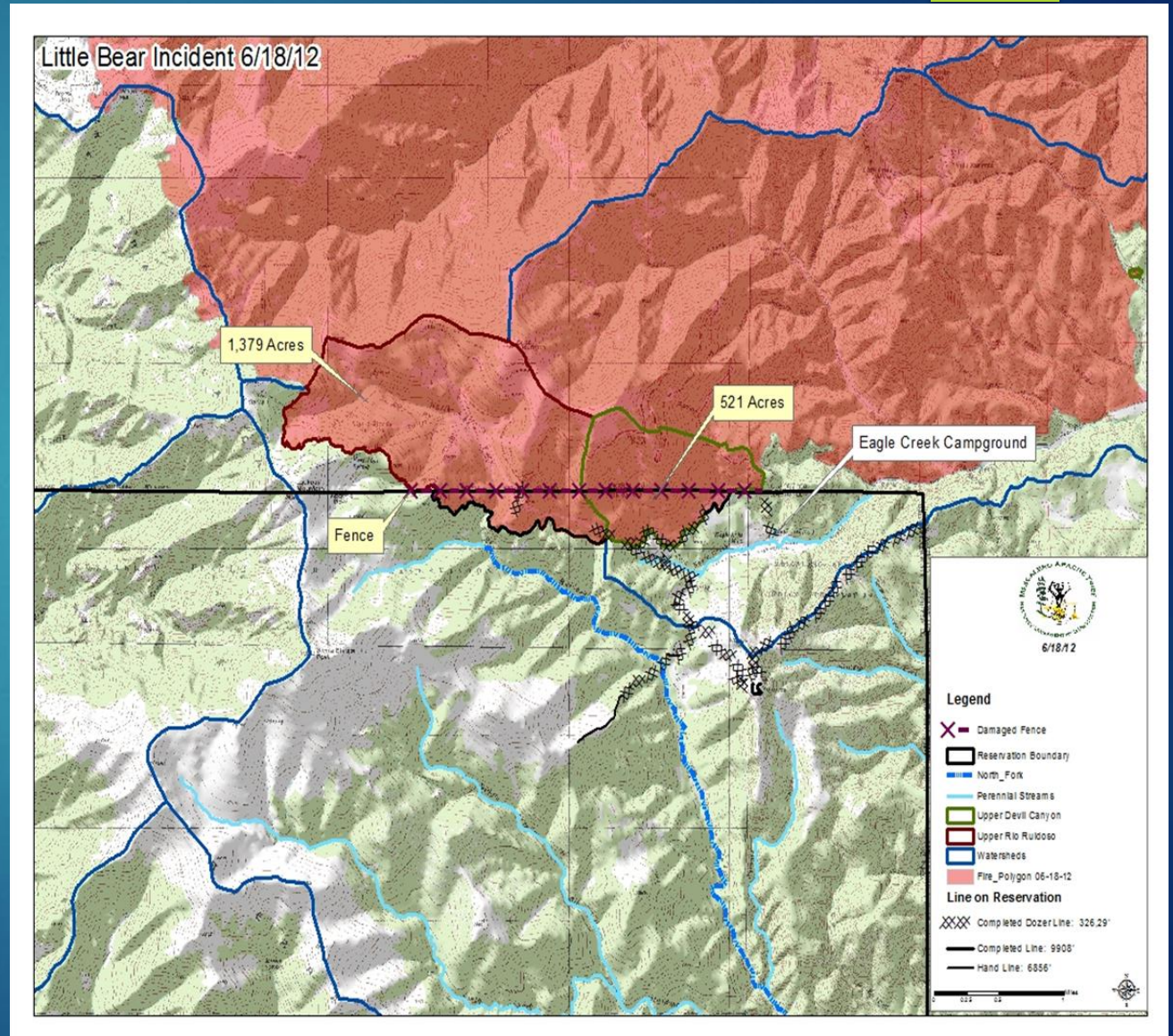
& Coordination with Youth Development



We Have Our Share of Wildfires



2012 Little Bear Fire, occurred along the boundary with Lincoln Natl Forest



Whitetail Fire March 2016, Cool Surface Fire



Soldier Canyon
Fire, June 2018,
approximately
1,500 acres burned
within main
community of
Mescalero



Ongoing problems with post-fire flooding



And our community located in floodplain



What else are we doing to mitigate?

FUTURE PLANS:

- ▶ Drainage Management Study
- ▶ Recommendations to Tribal Council to locate new buildings and residences OUT OF HARMS WAY, i.e. Zoning
- ▶ Educate our public

And That's All Folks! - 'Ixéhe





For more information, contact:
Thora Padilla, Director
Division of Resource Management and Protection
Mescalero Apache Tribe
575-464-4711
thora@mescalerodrmp.org