

Indian Affairs Committee Presentation September 25, 2012

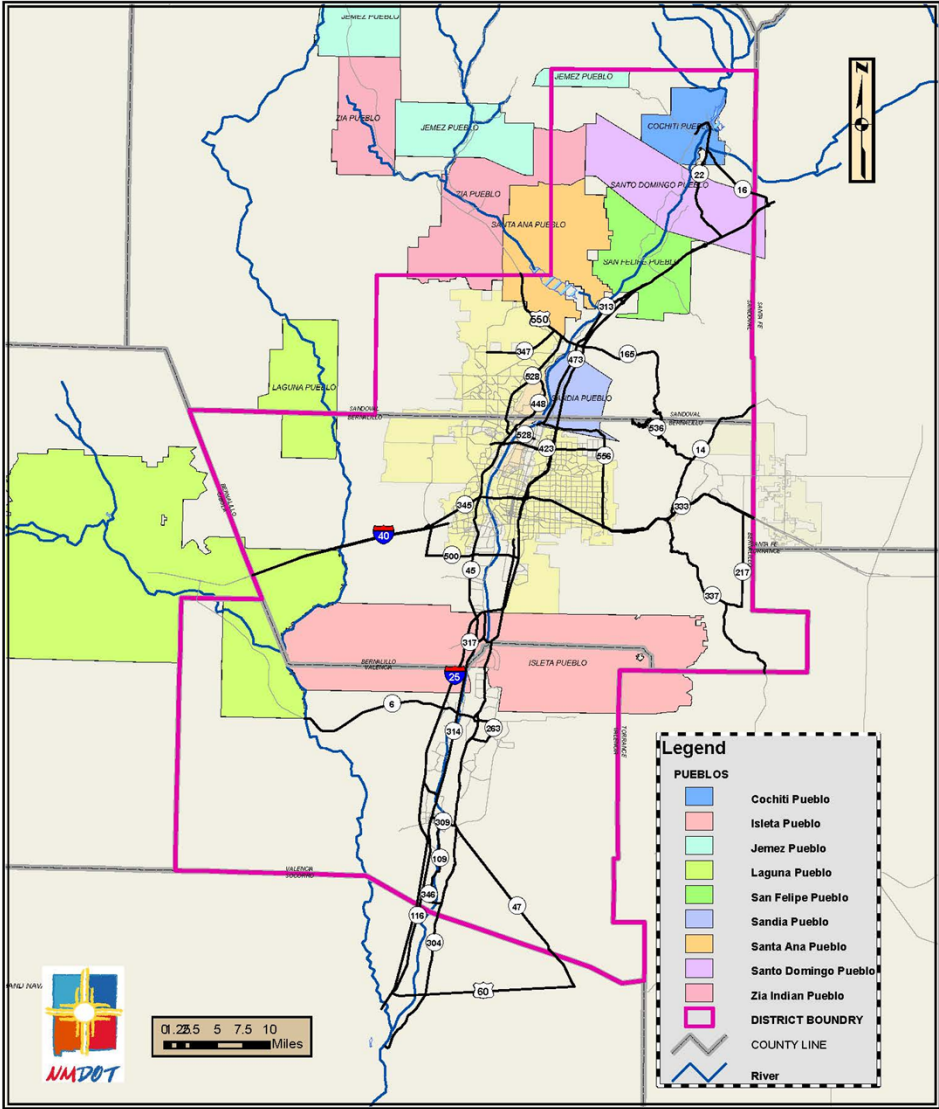
Transportation Infrastructure in Indian Country

Collaboration with Tribal Governments

Tamara P. Haas, P.E.
NMDOT – District Three Engineer



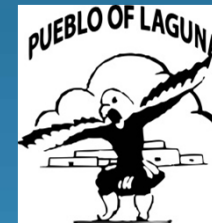
**NMDOT DISTRICT 3
PUEBLOS IN
DISTRICT BOUNDARY**



Pueblos within District Three

➤ There are 7 Pueblos that have roadways within District Three

- ✓ Cochiti
- ✓ Isleta
- ✓ Laguna
- ✓ San Felipe
- ✓ Sandia
- ✓ Santa Ana
- ✓ Santo Domingo/Kewa (KEE-wah)



Cooperation With The Pueblos

- District Three holds monthly/bi-monthly/quarterly meetings with the Pueblo's within District Three
- District Staff meets with :
 - ✓ Cochiti – as needed basis/moving towards quarterly meetings
 - ✓ Isleta – Meet Monthly with Gov., Lt. Gov. and staff
 - ✓ Laguna – Meet monthly with staff and LDC
 - ✓ San Felipe – Meet with staff every 2-3 months
 - ✓ Sandia – Meet with Gov./Lt. Gov./Staff monthly
 - ✓ Santa Ana – Meet with planning staff quarterly
 - ✓ Santo Domingo - as needed basis/moving towards quarterly meetings

Meeting Discussion Items:

- ✓ Agreements
- ✓ Major NMDOT projects
- ✓ Upcoming maintenance projects
- ✓ Access
- ✓ Proposed developments
- ✓ Upcoming funding opportunities
- ✓ Forum to discuss maintenance & safety concerns on NMDOT owned roadways
- ✓ Other items that the Pueblo/District wish to discuss



Completed Projects

- ✓ I-40 WB off ramp at Laguna – GRIP II – Final Construction Cost: \$3,205,961



- ✓ NM 47/Isleta Tribal Road Complex Road in Isleta Pueblo
 - ✓ Joint funded with NMDOT – ARRA & IRR funding from Isleta
 - ✓ Final Contract Amount: \$1,401,250



Completed Projects (cont.)

✓ NM 16 in Cochiti

- ✓ ARRA funding from the DOT: \$1,500,000
- ✓ IRR funding from Isleta: \$929,046



✓ NM 22 in Santo Domingo

- ✓ ARRA funding from the DOT: \$2,000,000
- ✓ IRR funding from Santo Domingo: \$334,800



✓ NM 313 in San Felipe turning lanes to Black Mesa Subdivision

- ✓ Pueblo provided project development and NMDOT delivered construction
 - ✓ Included \$95,333 of LGRF “others” funding
 - ✓ Final Contract Amount: \$763,853



Pueblo of Cochiti NM 22

Flood Control

- **Pueblo:** Cochiti
- **Location:** TR 85 West of NM 22
- **Scope:** 2 weeks of hauling rocks and fill material for emergency flood mitigation
- **Project Cost:** \$8,800 Hauling 2 wks.
(labor & equipment)
- **Completion:** Summer of 2012



Pueblo of Isleta (ongoing)

NM 47 Drainage Improvements

- **Pueblo:** Isleta
- **Location:** NM 47 between Isleta Lakes Road and Tribal Complex Road
- **Scope:** Erosion Protection for drainage culverts
- **Project Cost:** \$7,500 Material & Hauling
- **Completion:** Summer of 2012



Before



After; Location 1 Almost Done



Location 3



Location 2

Pueblo of San Felipe Projects



- **Location:** Pueblo Road 84 at the Headstart
 - **Scope:** Intersection improvements
 - **Status:** Notice to proceed issued June 26, 2012 – currently under construction
 - **Completion:** Fall of 2012
-
- **Location:** TR 85, Hagen Road from I-25 to the Tribal Offices and TR 85 from the railroad tracks to the soccer field
 - **Scope:** Pedestrian Pathway
 - **Status:** Notice to proceed issued September 14, 2012
 - **Completion:** December 15, 2012

I-40/Rio Puerco Construction

- **Location:** Project Located on I-40 at Mile Marker 140
- **Pueblo:** Laguna
- **Scope** Interchange reconstruction
- **Project Cost:** \$6,300,000 (Engineers Estimate)
- **Proposed Letting:** December of 2012
- **Construction:** Spring of 2013



NM 47 Safety Improvements

- **Location:** Project located on NM 47 between NM 147 and Chical
- **Pueblo:** Isleta
- **Scope:** Roadway widening to accommodate two-way left turn lane and shoulders between Tribal Road 4 and Tribal Road 7 along with a raised median on NM 47 immediately south of Chical Road
- **Project Cost:** \$660,000(Engineers Estimate)
- **Proposed Letting:** Winter of 2012
- **Construction:** Spring of 2013

