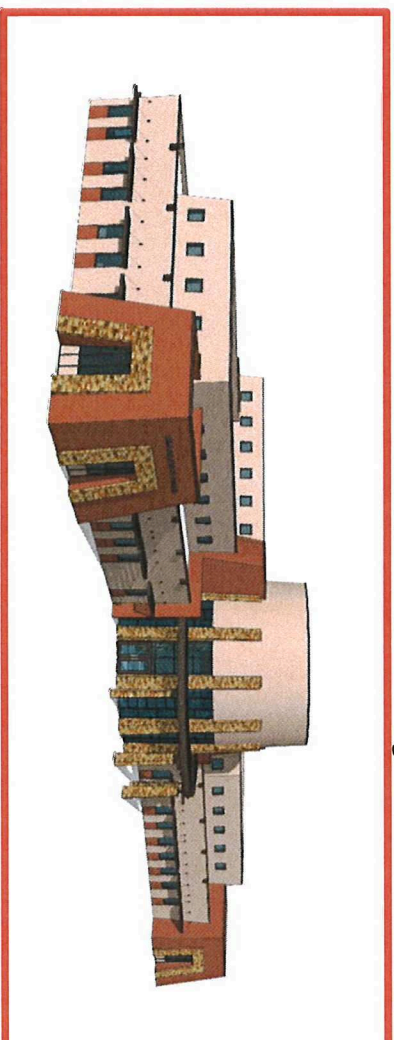




PUEBLO OF SANTA ANA

**Public Safety, Judicial & Social Services
Complex**

Construction Project



NM Indian Affairs Committee
October 18, 2021

CRITICAL NEED

- Since 2013 the Pueblo has been planning on building a Public Safety, Judicial and Social Service Complex that will meet the life safety, Building and ADA Code requirements.
- The Police Department, Tribal Court and Social Services are located-in the heart of the Pueblo exposing the general welfare of the community to potential outside criminal elements when individuals travel into the heart of the Pueblo to conduct business or services.
- The Complex will serve the larger Southern Sandoval County Law Enforcement Departments and Communities.

READINESS

Below is a summary of prior grant funding towards project development:

Pueblo of Santa Ana Public Safety and Judicial Complex		
Scope	Description	Amount
Preliminary Planning and Engineering	2013 TIF Funds	\$ 66,000
	2016 Capital Outlay Funds	\$75,000
35% Schematic Design	2016 TIF Funds	\$250,000
Finalize Design Documents	2016 TIF Funds	\$250,000
PM and Construction for Roadway, Drainage and Utility	2019 Capital Outlay Funds	\$635,000
	2021 Capital Outlay and TIF Funds	\$5,899,619
Building Construction and Admin		
Total Grant Funding		\$6,925,619
Matching Funds	Pueblo of Santa Ana In-kind Archeological Clearance and Planning Committee Time	\$ 4,000
Total Project Funding to Date		\$6,929,619

Budget

Below is a total construction budget to complete the project:

\$ 9,500,000	Construction/FFE (Cost estimate in 2018)
\$ 2,375,000	Construction Escalation 2021 (25%)
-\$3,994,619	2021 TIF Construction
-\$1,905,000	2021 CO Construction, Admin and Support
<u>- \$635,000</u>	<u>2019 CO Infrastructure Develop. to Project Site</u>

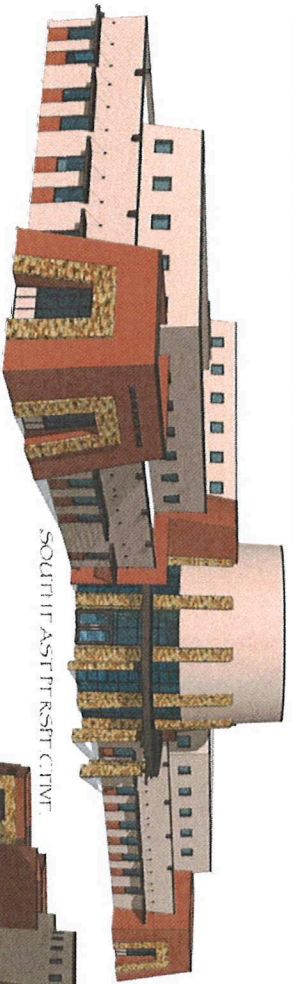
\$5,340,381 Shortfall to Complete Complex

2021 TIF and 2021 Capital Outlay funds are designated for construction, construction administration, Inspections and support services sufficient to provide weatherproof exterior closure to the building.

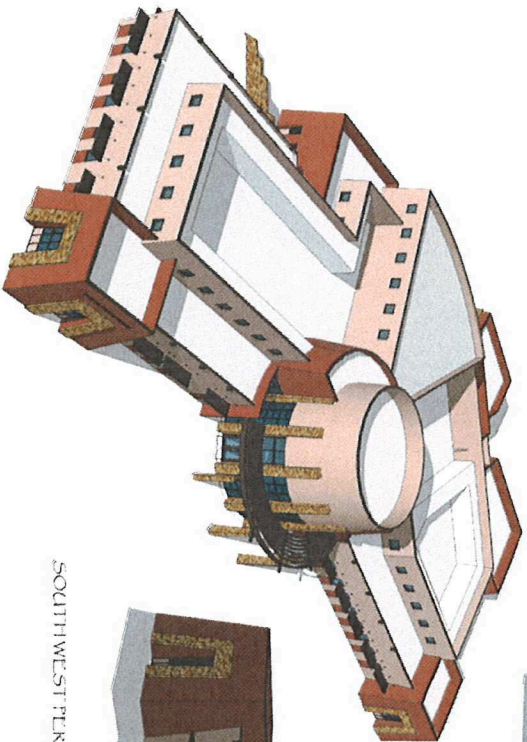
Future funding (shortfall) will be utilized to finalize building interior, FFE and exterior infrastructure including amenities like solar shade structures for vehicle parking, additional maintenance building and large parking and storage areas that can be added over time as funding allows.

Exterior Elevations

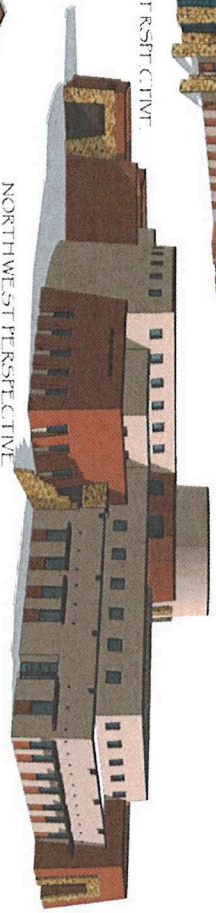
SANTA ANA JUDICIAL & PUBLIC SAFETY COMPLEX



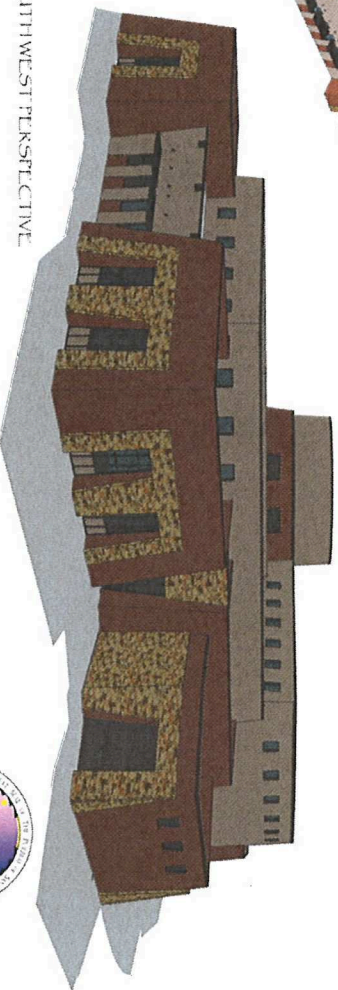
SOUTH EAST PERSPECTIVE



AERIAL FROM SOUTHEAST



NORTHWEST PERSPECTIVE



SOUTHWEST PERSPECTIVE

WHPacific
NOVEMBER 20, 2012



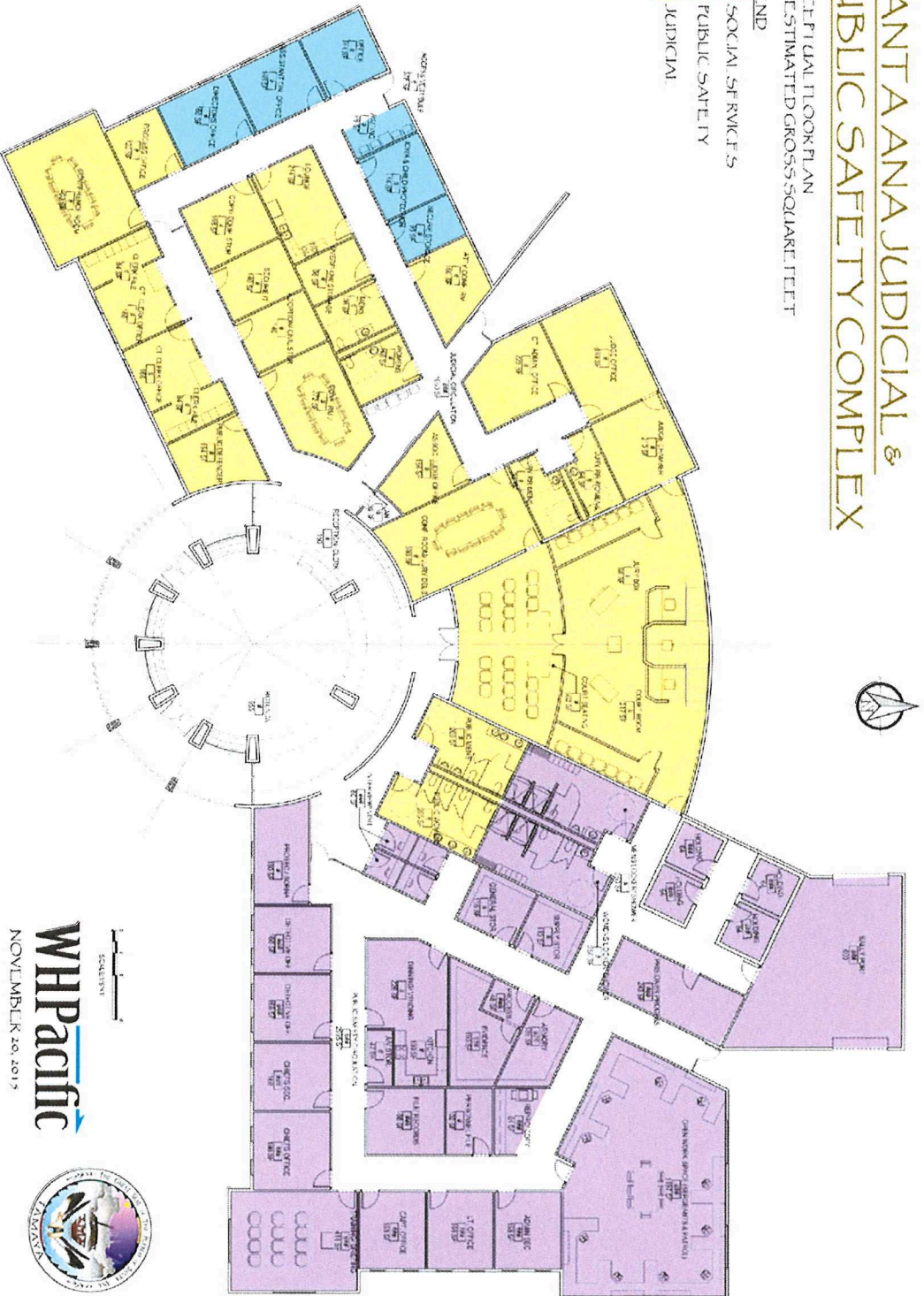
Floor Plan

SANTA ANA JUDICIAL & PUBLIC SAFETY COMPLEX

CONCEPTUAL FLOOR PLAN
19,968 ESTIMATED GROSS SQUARE FEET

LEGEND

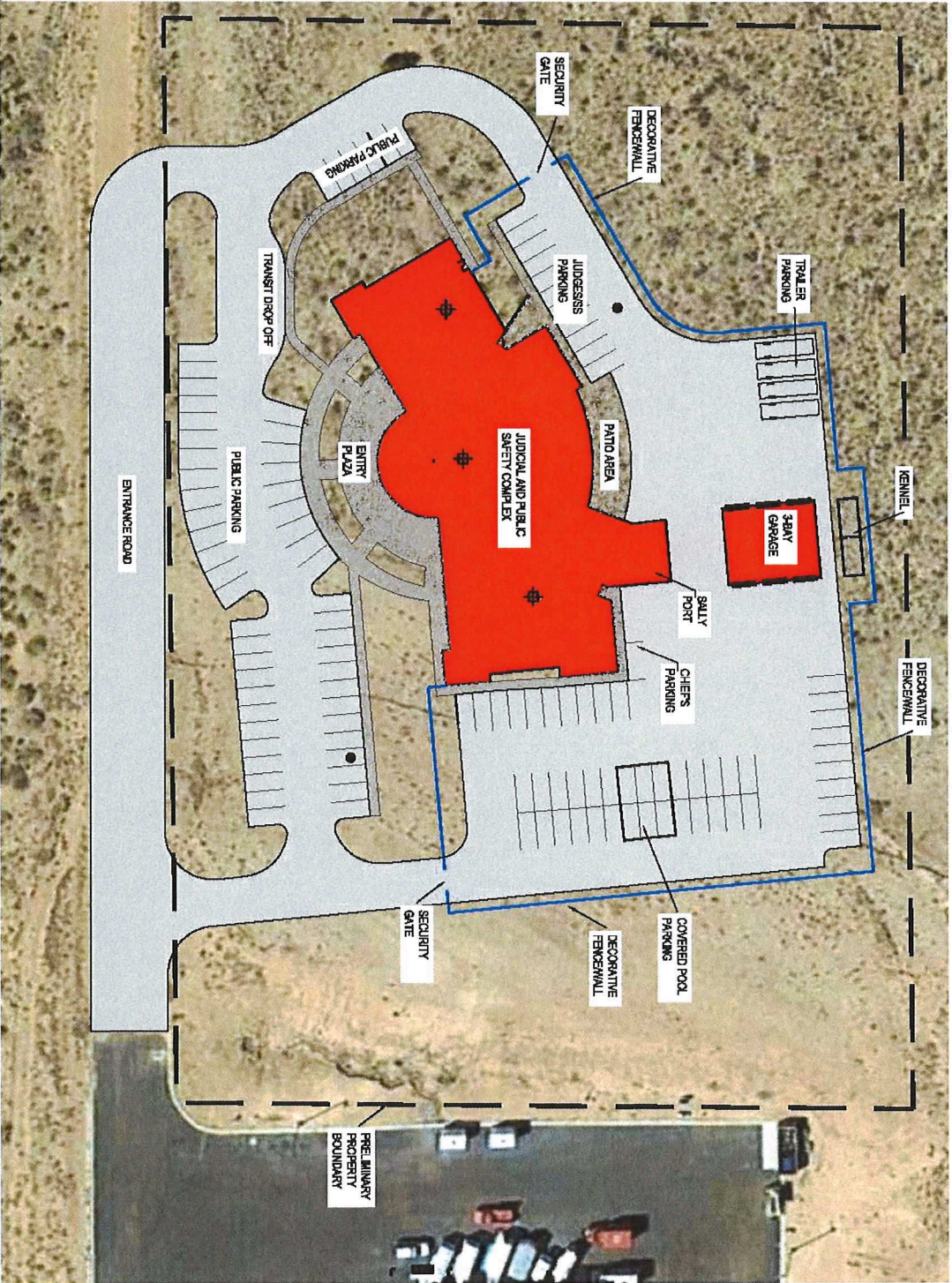
- SOCIAL SERVICES
- PUBLIC SAFETY
- JUDICIAL



SCHEMATIC
WHPacific
NOVEMBER 20, 2019



Site Plan



Anticipate Outcomes

The New Complex will meet life, safety and building code requirements for the general welfare of the employees and public.

- The Complex will be located outside of the heart of the Pueblo community reducing exposure to outside criminal elements.
- The new Complex will be located in the area with the need for highest emergency response calls and will drastically reduce emergency response times.
- Enhanced public safety and services for general public.
- Complex will be designed for growth of operations and will serve the Pueblo for many years into the future.
- The Complex will be used as a Regional Public safety Complex.

**Any questions please contact Robert
Ortiz, Tribal Planner at (505) 771-6712 or
Nathan Tsosie, Business Specialist at (505)
771-6713. Thank you!**

