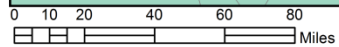
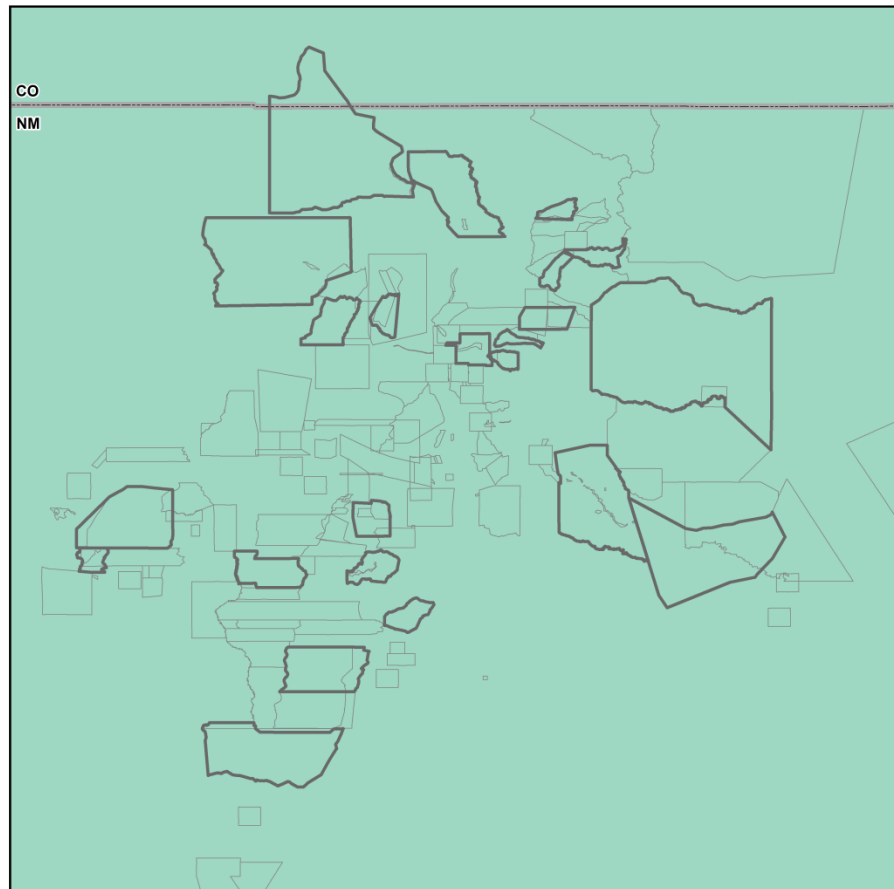


The background of the slide is a photograph of a desert landscape. In the foreground, there is a dead, bleached tree trunk lying on the ground. The ground is sandy and covered with sparse green vegetation and small shrubs. In the background, there are more green trees and a dirt path or road winding through the landscape. The overall scene is a typical desert environment.

# UNM Land Grant Studies Program Mapping Project: Phase 2 Results

UNM Land Grant Studies Program  
Southwest Hispanic Research Institute  
The University of New Mexico  
15 June 2012

## Historic Boundaries of Certain Land Grants and All Patented Boundaries



### Legend

- Historic Boundary
- Patented Boundary
- State Boundary

UNM LGSP  
4/23/2012

The shapefiles for this map were downloaded from the  
New Mexico Resource Geographic Information System Program  
at [www.rgis.unm.edu](http://www.rgis.unm.edu).



# Goal:

Determining boundaries of the area of  
each community land grant-*merced*  
where traditional use rights can be  
affirmed

# Traditional use rights

- Land grant heirs used historic common lands as
- cleaning ditches and waterways
- grazing animals
- timber harvesting
- herb gathering
- religious and cultural use
- hunting and fishing
- recreation

# Best approximation of area where traditional use rights were exercised:

The boundaries of historic common lands as. . .

- documented in original petitions
- claims presented to Surveyors General and Court of Private Land Claims (1854-1904), and

areas used by heirs for traditional purposes, as  
documented in records and through oral histories

Maps based on this methodology  
to be presented to U.S. Forest  
Service, BLM, federal agencies

- Land grants to negotiate renewed access to historic common lands for traditional use rights
- Maps prepared by UNM-LGSP may serve this purpose

# Mapping project phases

- Phase 1: Petitioner documents and developing a set of rules to apply consistently on interpretation of boundaries (concluded 2011)
- Phase 2: (To be concluded July 2012) Incorporation of heirs oral history information
- Phase 3: (2012-2014): Incorporation of additional archival information and GPS field work on historic boundaries



# Selection of 15 (out of 26) phase 2 maps

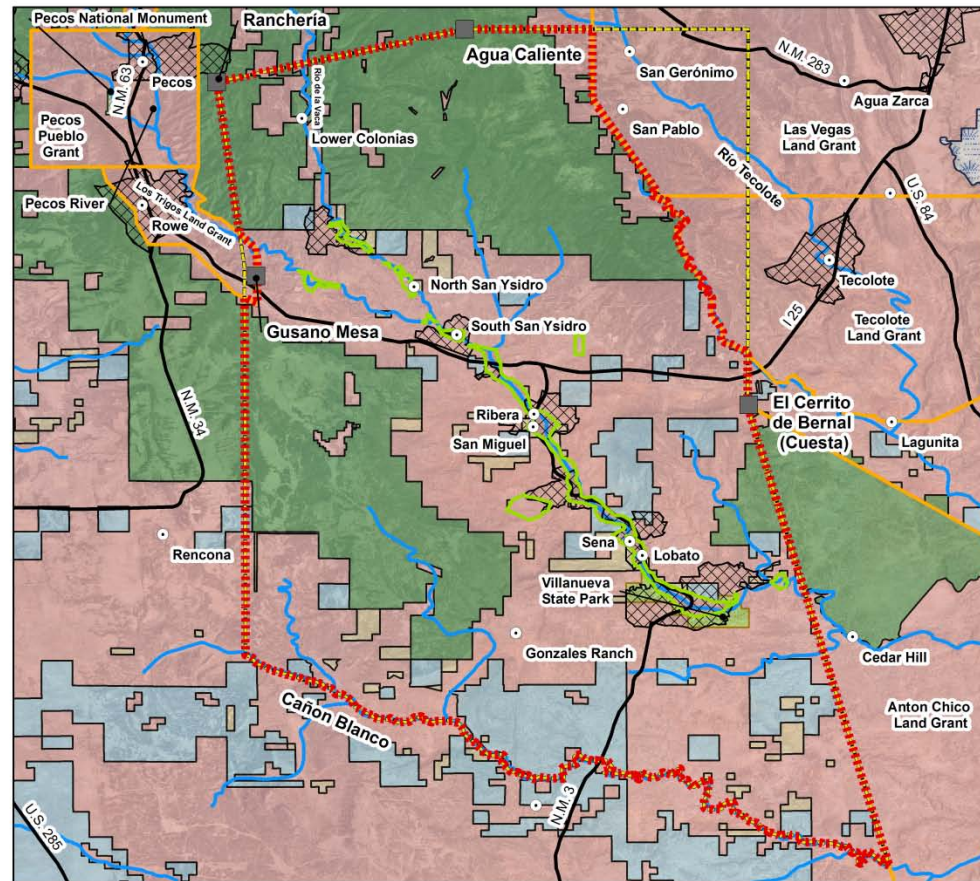
- Module 1: Sandoval 7
- Module 2: Land grants with patented and historic boundaries that match closely
- Module 3: Misinterpreted historic boundaries restricted size of patent
- Module 4: Other land grants



# MODULE 1:

Four land grants from Sandoval 7

# San Miguel del Vado Land Grant Historic Boundaries



0 2 4 8 12 16 Miles

## Boundaries and Features

- 1903 Survey Patented Bound. (5,098 ac.)
- Historic Boundary Post Daughter Grants (290,902 ac.)
- 1879 Survey (315,516 ac.)
- Boundaries of Patented Land Grants
- Census 2010 Designated Place
- Water Channel
- Road
- Historic Landmark
- Populated Place

## Ownership Classes

- State
- State Park
- Private
- BLM
- Forest Service
- Fish & Wildlife
- Nat'l Park Serv.

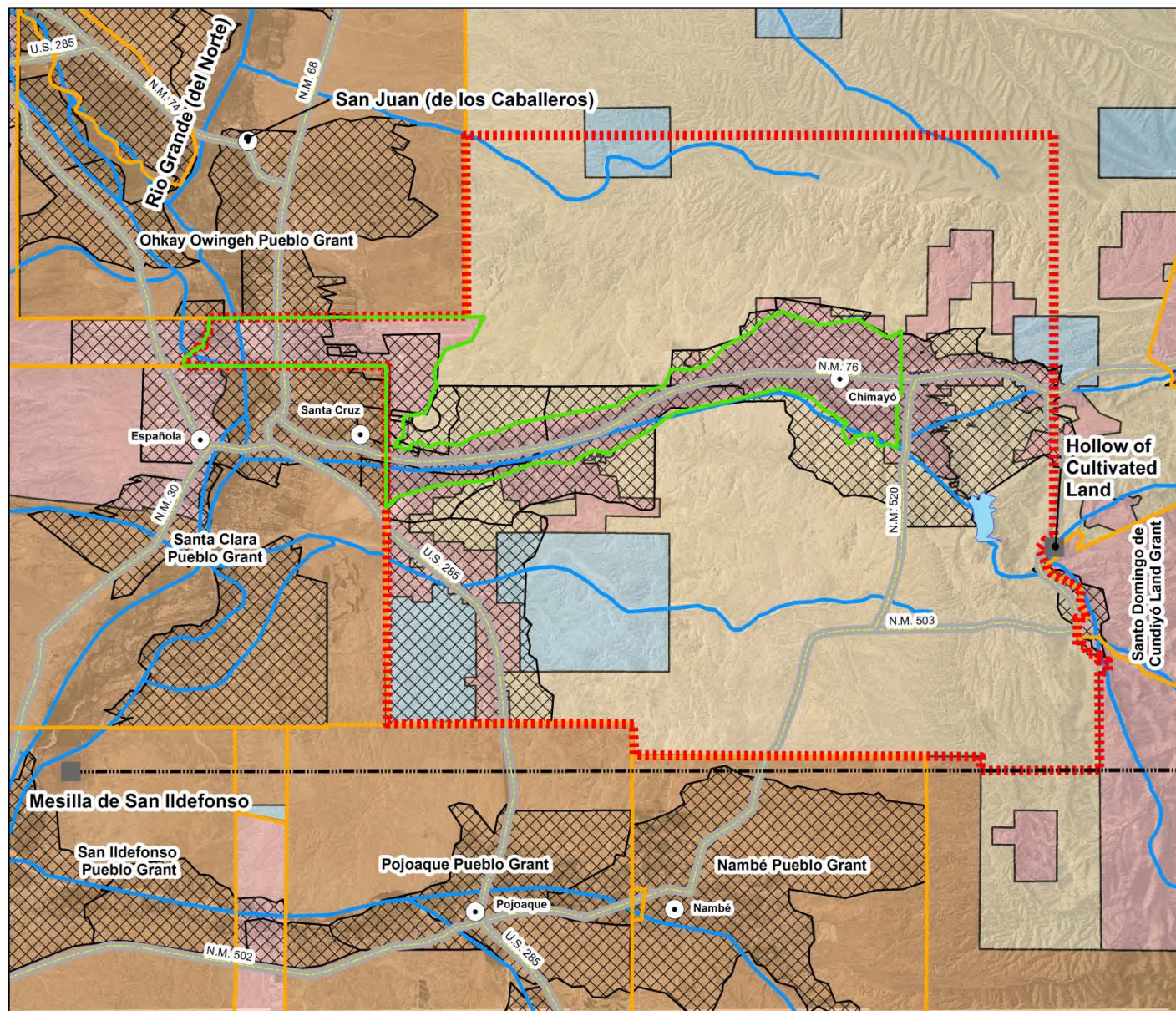


UNM LGSP  
4/23/2012

This is a reproduction of historic surveys and historic documents. This is not a survey. The accuracy of this map is relative to the information from which it is derived. Ownership is based on open-source BLM shapefiles. CDPs were downloaded from the U.S. Census Bureau website.



# Santa Cruz de la Cañada Land Grant Historic Boundaries



## Boundaries and Features

- 1901 Survey Patented Bound. (4,567.6 ac.)
- - - Historic Bound. (43,463 ac.)
- Boundaries of Patented Land Grants
- Census 2010 Designated Place
- Santa Cruz Lake
- Water Channel
- Road
- - - Mesilla de San Ildefonso Lateral
- Historic Landmark
- Populated Place

## Ownership Classes

- BLM
- State
- Private
- Tribal

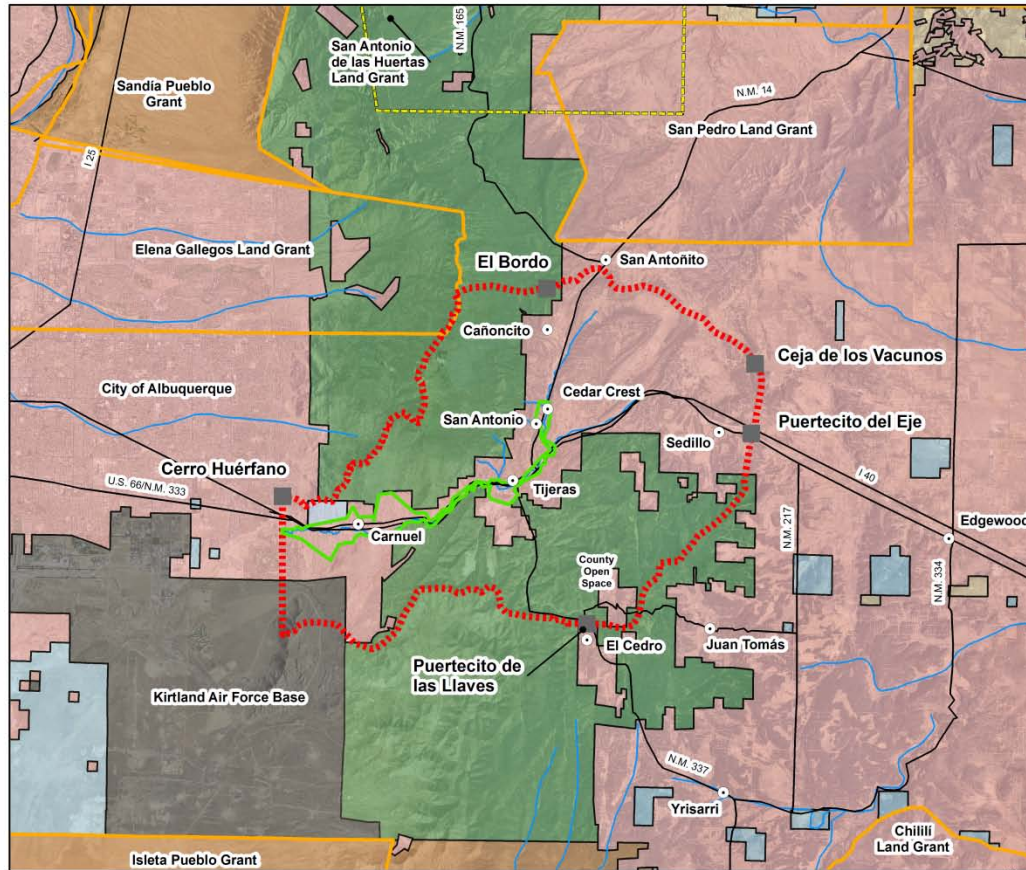


**UNM LGSP**  
**4/23/2012**

This is a reproduction of historic surveys, sketches, and verbal descriptions. This is not a survey. The accuracy of this map is relative to that of the information from which it is derived. Land ownership is based on open-source BLM shapefiles.



# Cañón de Carnué Land Grant Historic Boundaries



## Boundaries and Features

- 1901 Survey Patented Boundary (2,000.59 ac.)
- Historic Boundary (48,613 ac.)
- Boundaries of Patented Land Grants
- San Antonio de las Huertas Hist. Bound.
- Water Channel
- Road
- Historic Landmark
- Populated Place

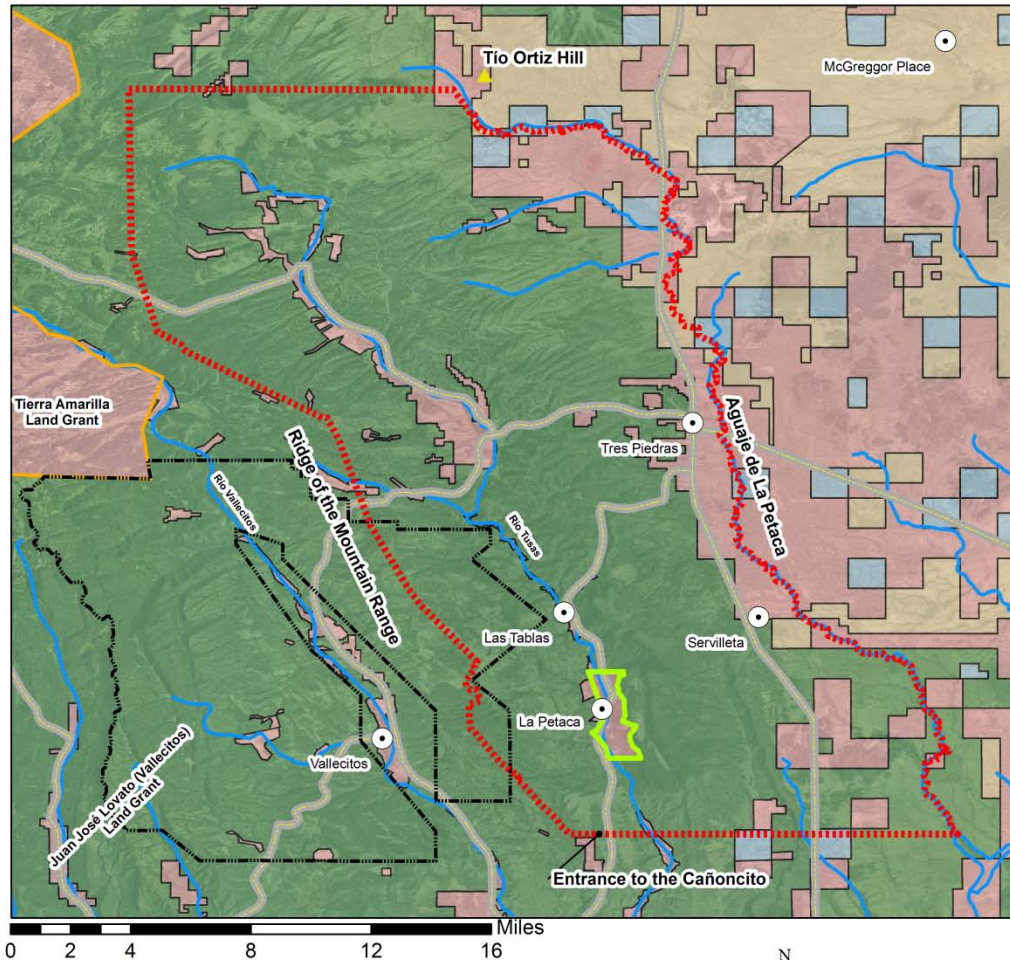
## Ownership Classes

- State
- BLM
- Dept. of Defense
- Forest Service
- Private
- Tribal

**UNM LGSP  
4/23/2012**

This map is a reproduction of historic survey plats and historic documents. This is not a survey. The accuracy of this map is relative to that of the information from which it is derived. Ownership is based on open-source BLM shapefiles.

# La Petaca Land Grant Historic Boundaries



## Boundaries and Features

- 1900 Survey Patented Bound. (1,392.1 ac.)
- 1878 Survey (186,652 ac.)
- Boundaries of Patented Land Grants
- Vallecitos Sustained Yield Unit
- Water Channel
- Road
- ▲ Tio Ortiz Hill
- Populated Place

## Ownership Classes

- Forest Service
- Private
- BLM
- State



**UNM LGSP  
4/23/2012**

This map is a reproduction of historic surveys.  
This is not a survey.  
Property ownership is based on open-source BLM shapefiles.  
Other shapefiles were downloaded from the United States  
Forest Service website.  
The accuracy of this map is relative to the information  
from which it is derived.

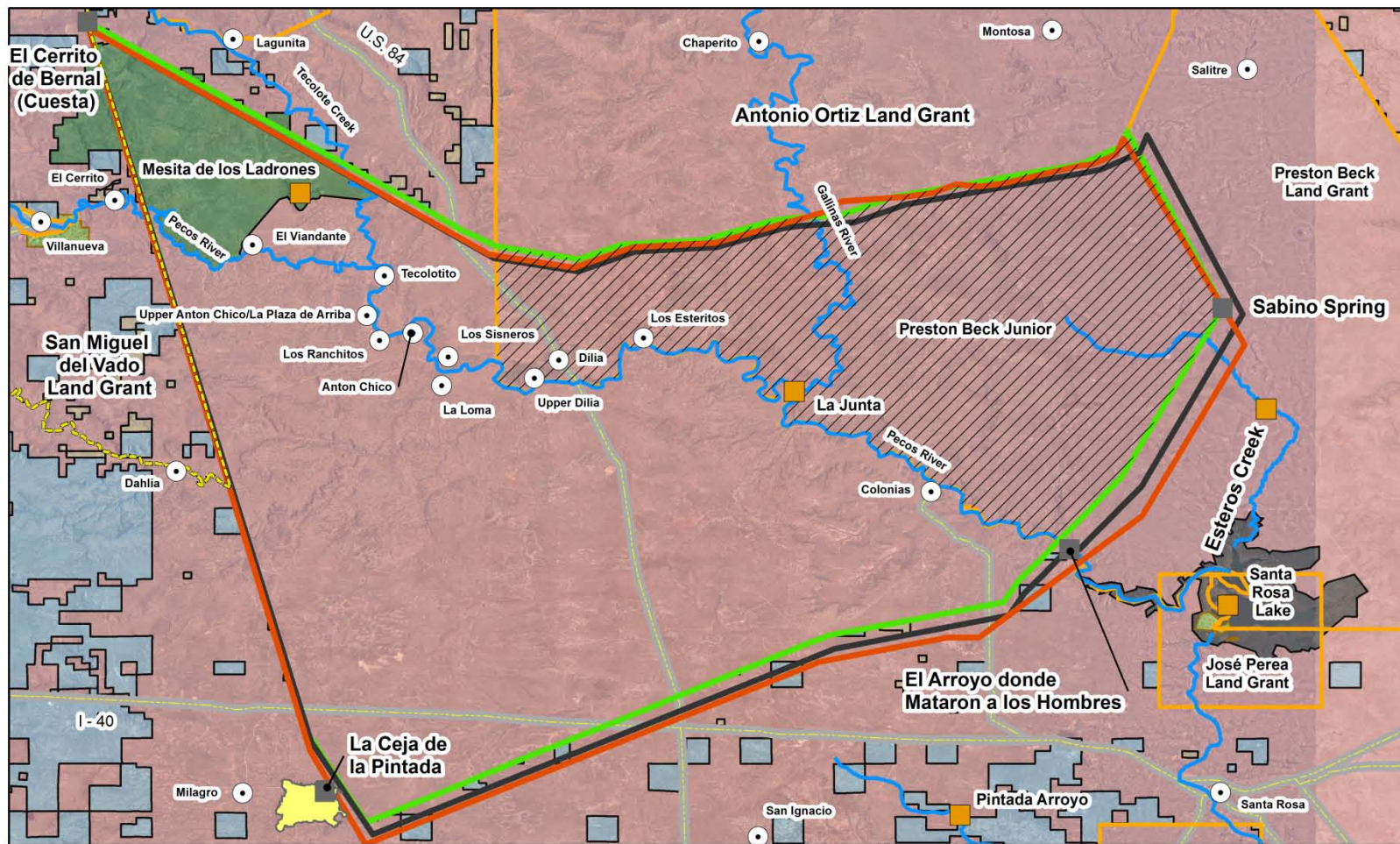
## MODULE 2:

Land grants with historic and patented boundaries that match closely





# Anton Chico Land Grant Historic Boundaries



## Boundaries and Features

- Modern BLM-defined (377,965ac)
- 1878 Survey (384,940ac)
- 1860 Survey (396,432ac)
- San Miguel del Bado Hist. Bound.
- Boundaries of Patented Land Grants
- Anton Chico-Preston Beck Overlap
- La Ceja de la Pintada
- Water Channel
- Road
- Historic Landmark
- Significant Feature
- Populated Place

## Ownership Classes

- Private
- BLM
- Dept. of Defense
- Forest Service
- State
- State Park

0 2 4 8 12 16 Miles

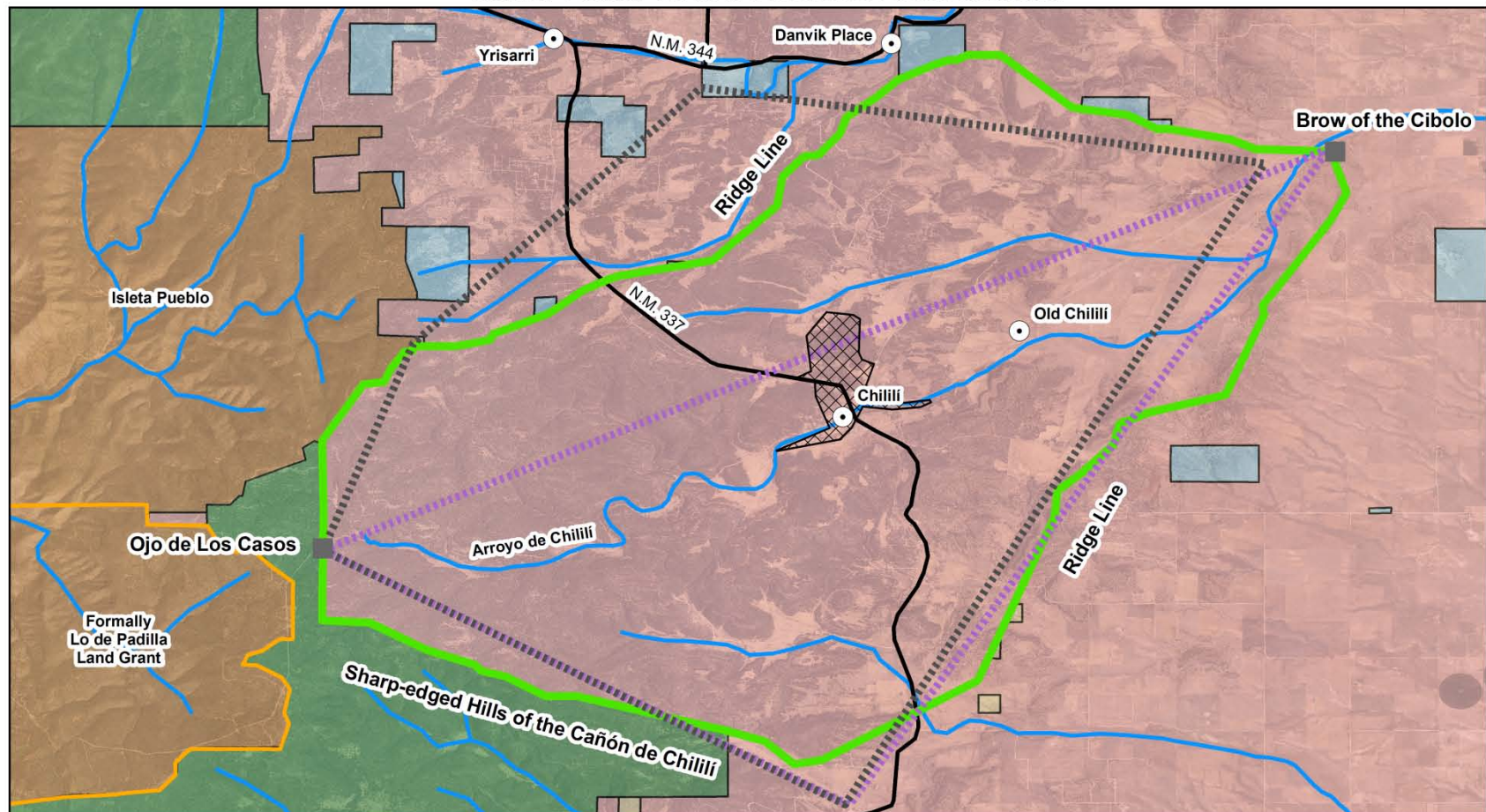
UNM LGSP  
4/23/2012



This is a reproduction of historic survey plats.  
This is not a survey.  
The accuracy of this map is relative to that of the information used to derive it.  
Ownership is based on open-source BLM shapefiles.



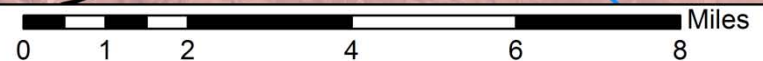
# Chililí Land Grant Historic Boundaries



## Boundaries and Features

- 1882 Survey Patented Bound. (41,481 ac.)
- 1877 Survey (23,433 ac.)
- 1860 Survey (38,398 ac.)
- Boundaries of Patented Land Grants
- Census 2010 Designated Place
- Water Channel
- Road
- Historic Landmark
- Populated Place

## Ownership Classes



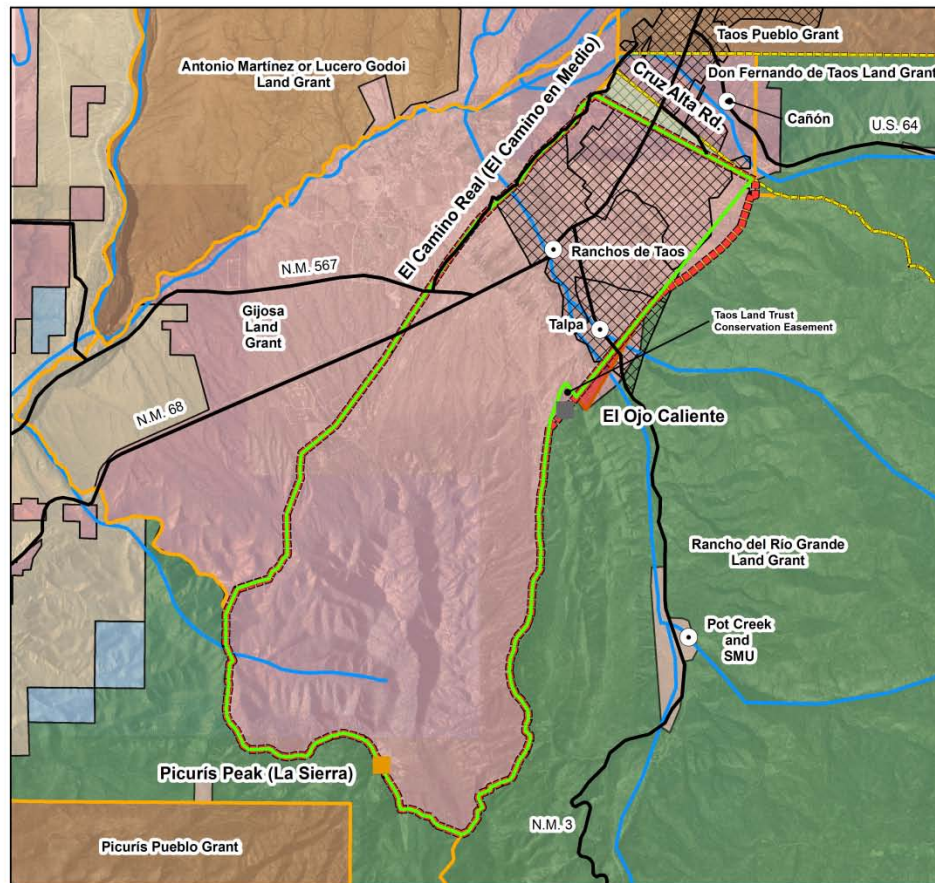
**UNM LGSP**  
**4/23/2012**

This is a reproduction of historic surveys.  
This is not a survey.  
The accuracy of this map is relative to that of the information from which it is derived.  
Ownership is based on open-source BLM shapefiles.

## MODULE 3:

Land grants in which  
misinterpreted historic  
boundaries restricted the size of  
the patent

# Cristóbal de la Serna Land Grant Historic Boundaries



0 0.5 1 2 3 4 Miles

## Features and Boundaries

- Patent (22,840 ac.)
- Historic Boundary (23,187 ac.)
- Rancho del Rio Grande Overlap (120.15 ac.)
- Disputed Area (370.24 ac.)
- Don Fernando de Taos Historic Bound.
- Boundaries of Patented Land Grants
- Census 2010 CDPs
- Water Channel
- Road
- Historic Landmark
- Populated Place

UNM LGSP  
4/23/2012

## Ownership Classes

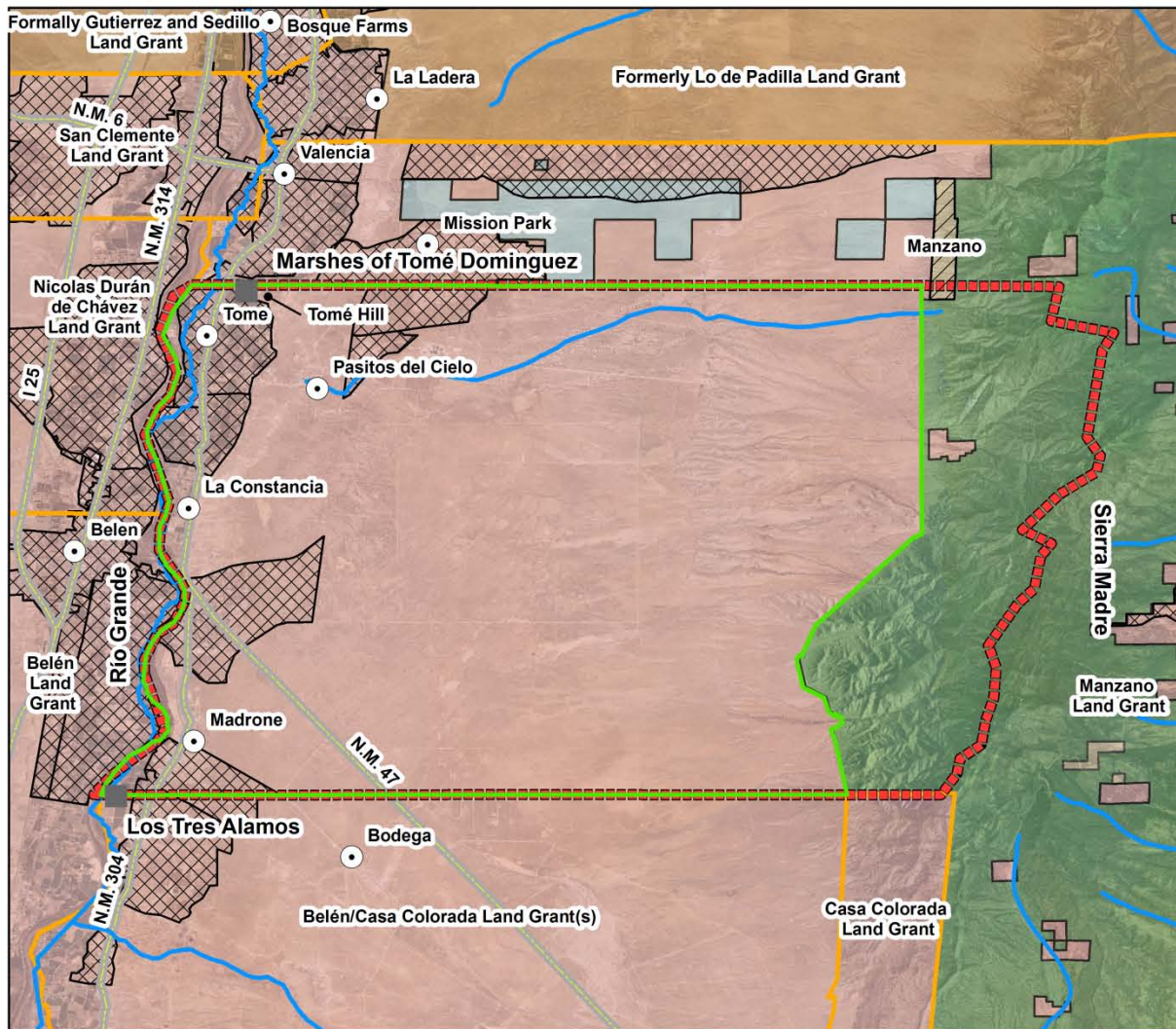
- State
- Private
- Tribal
- BLM



This is a reproduction of historic documents.  
This is not a survey.  
The accuracy of this map is relative to that  
of the information used to derive it.  
Ownership is based on open source  
BLM shapefiles. Local road files were  
provided by Taos County, NM.



# Town of Tomé Land Grant Historic Boundaries



0 2.5 5 10 15 20 Miles



## Boundaries and Features

- 1856 Survey/Patent (120,873 ac.)
- 1739 Claim/Hist. Bound. (147,791 ac.)
- Boundaries of Patented Land Grants
- Census 2010 Designated Places
- Water Channel
- Road
- Historic Landmark
- Populated Place

## Ownership Classes

- State
- Private
- Tribal
- BLM
- U.S. Forest Serv.
- Wilderness Study Area

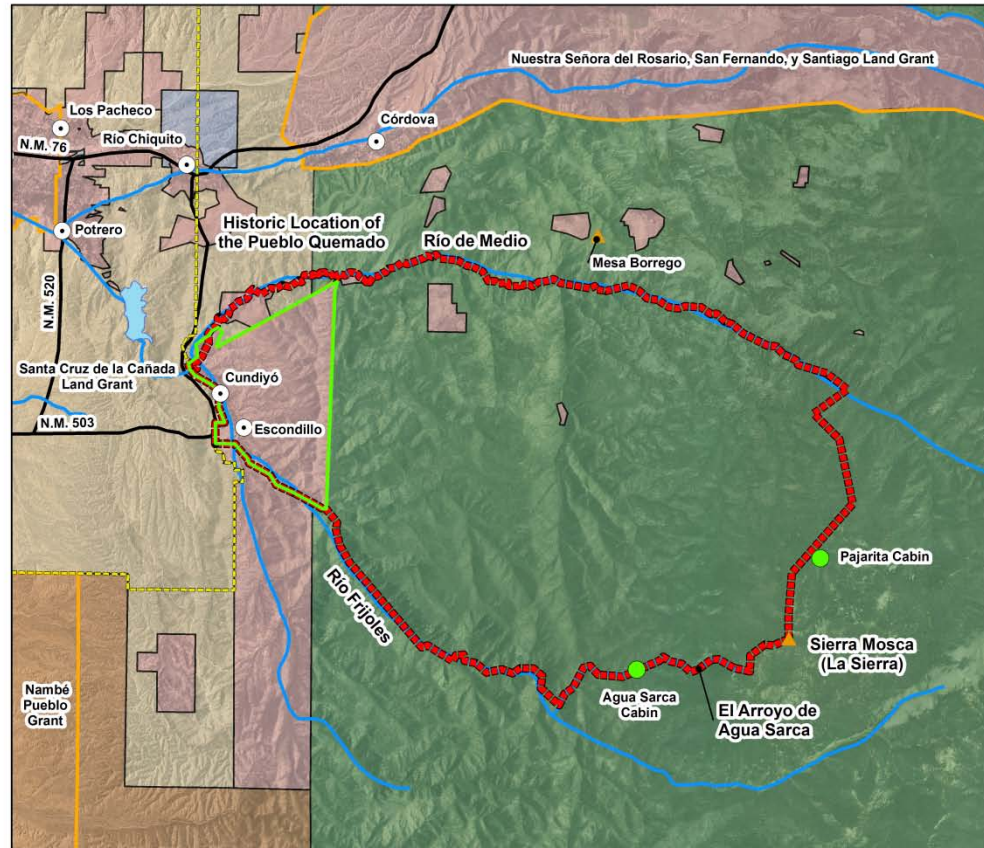
This is a reproduction of historic surveys, patent documents, and other historic documents.

This is not a survey.

The accuracy of this map is relative to that of the information used to derive it. Ownership is based on open-source BLM shapefiles.

**UNM LGSP**  
**4/23/2012**

# Santo Domingo de Cundiyo Land Grant Historic Boundaries



## Boundaries and Features

- Patent (2,117 ac.)
- - - - Historic Boundary (21,446 ac.)
- - - - Hist. Bound. of Santa Cruz de la Cañada
- - - - Boundaries of Patented Land Grants
- Santa Cruz Lake
- Road
- Historic Place
- ▲ Mountain
- Populated Place

## Ownership Classes

- State
- Tribal
- Private
- BLM
- Forest Service

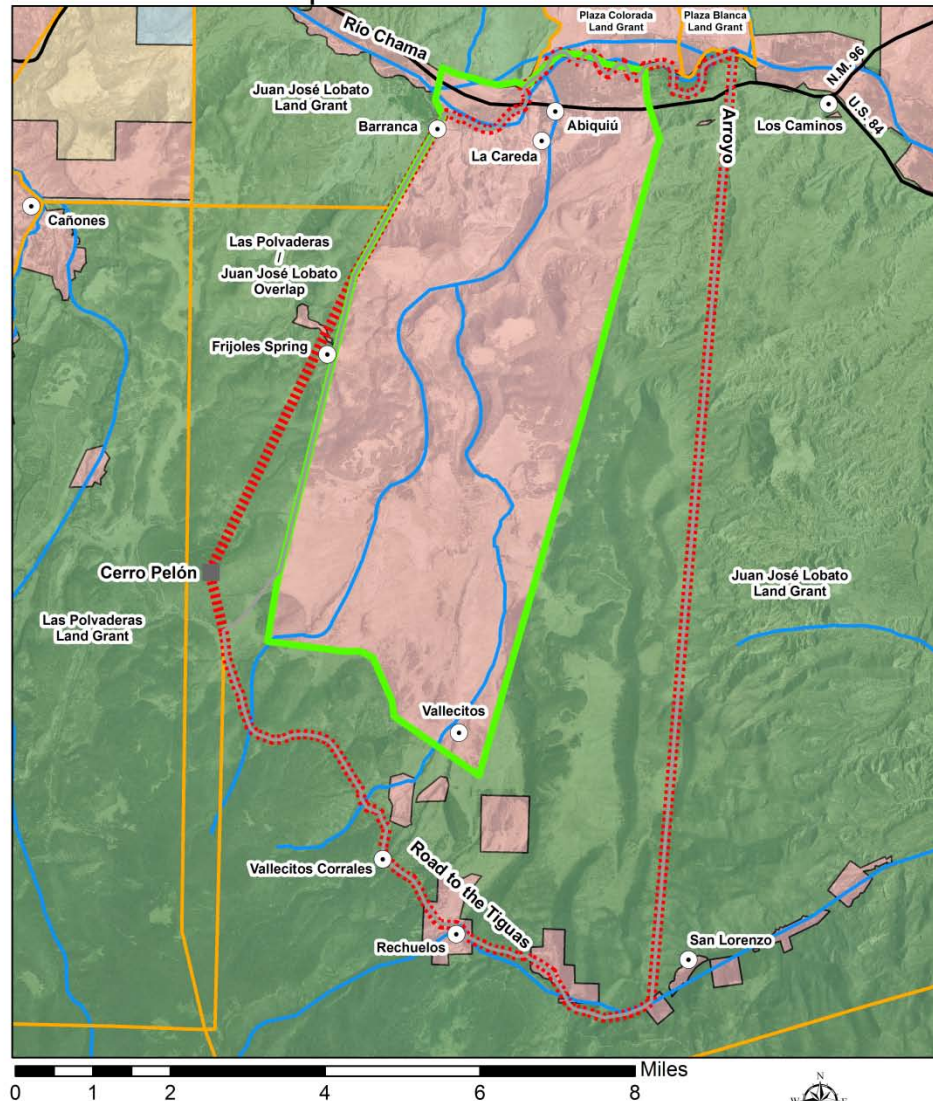


**UNM LGSP  
4/23/2012**

This is a reproduction of historic documents.  
This is not a survey.  
The accuracy of this map is relative to that  
of the information used to derive it.  
Ownership is based on  
open-source BLM shapefiles.



# Pueblo de Abiquiú Land Grant Historic Boundaries



Boundaries and Features	
	1895 Survey Patented Bound. (16,708.16 ac.)
	1754 Description Hist. Bound. (34,631 ac.)
	Alternative Hist. Version (33,279 ac.)
	Boundaries of Patented Land Grants
	Water Channel
	Road
	Historic Landmark
	Populated Place

Ownership Classes	
	Forest Service
	Private
	BLM
	State

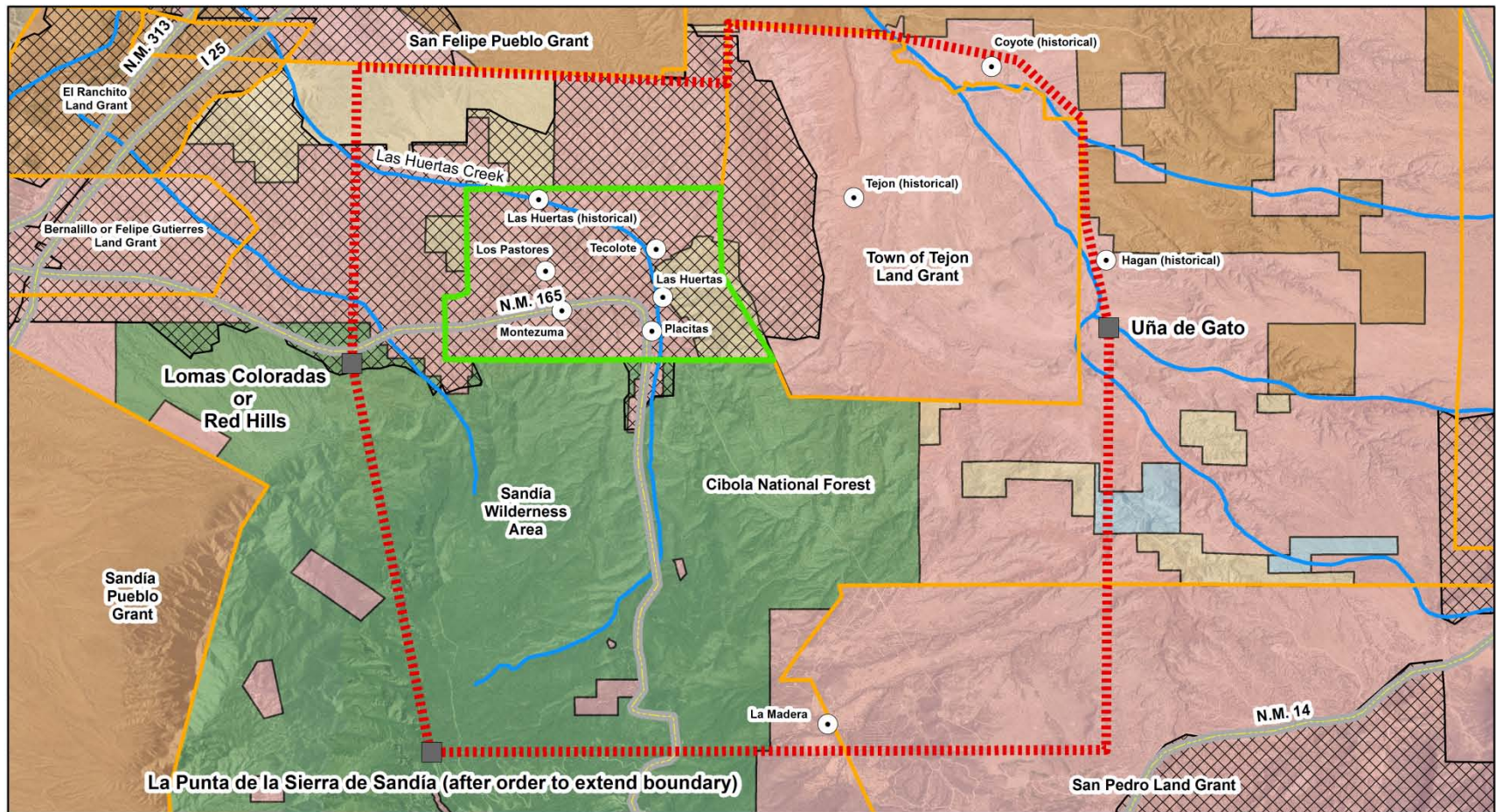
UNM LGSP  
4/23/2012

This is a reproduction of historic surveys and historic documents.  
This is not a survey.  
The accuracy of this map is relative to that of the information from which it is derived.  
Ownership is based on open-source BLM shapfiles.



# MODULE 4: OTHER GRANTS

# San Antonio de las Huertas Land Grant Historic Boundaries

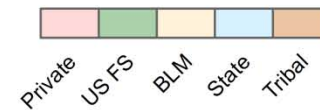


## Boundaries and Features

- 1901 Survey Patented Bound. (4,763.85 ac.)
- Historic Boundary (51,686 ac.)
- Boundaries of Patented Land Grants
- Census 2010 Designated Place
- Water Channel
- Road
- Historic Landmark
- Populated Place

UNM LGSP  
4/23/2012

## Ownership Classes



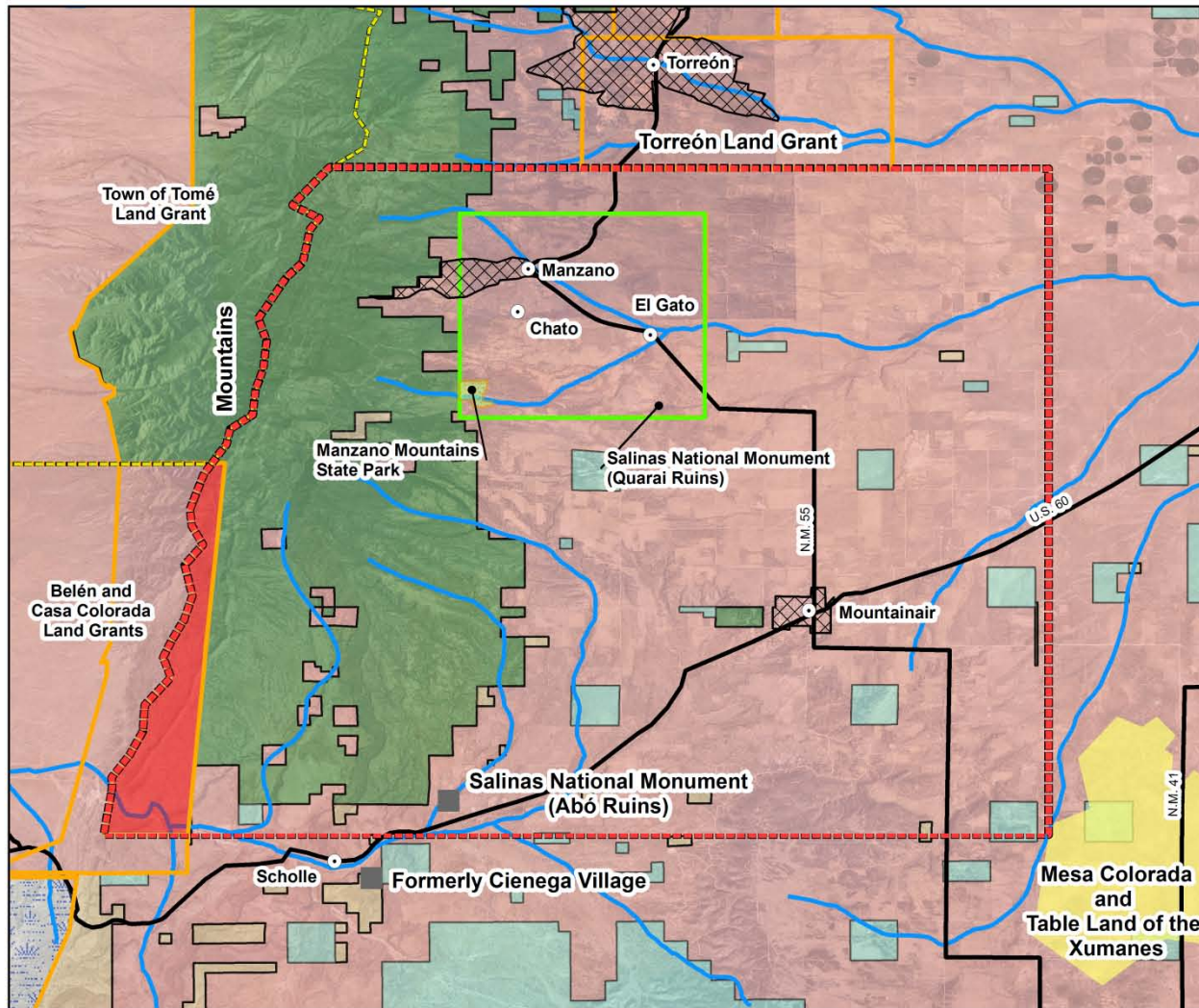
0 0.5 1 2 3 4 Miles



This is a reproduction of historic surveys and historic documents.  
This is not a survey.  
The accuracy of this map is relative to that of the information used to derive it.  
Ownership is based on open-source BLM shapefiles.



# Manzano Land Grant Historic Boundaries



## Boundaries and Features

- Patent (17,193.02 ac.)
- Historic Boundary (192,015.5 ac.)
- Manzano-Casa Colorada Overlap (5,556.8 ac.)
- Boundaries of Patented Land Grants
- Town of Tomé Historic Boundaries
- Census 2010 Designated Place
- Mesa Colorada
- Water Channel
- Road
- Historic Landmark
- Populated Place

## Ownership Classes

- Private
- BLM
- U.S. Forest Service
- Fish & Wildlife Serv.
- State
- State Park

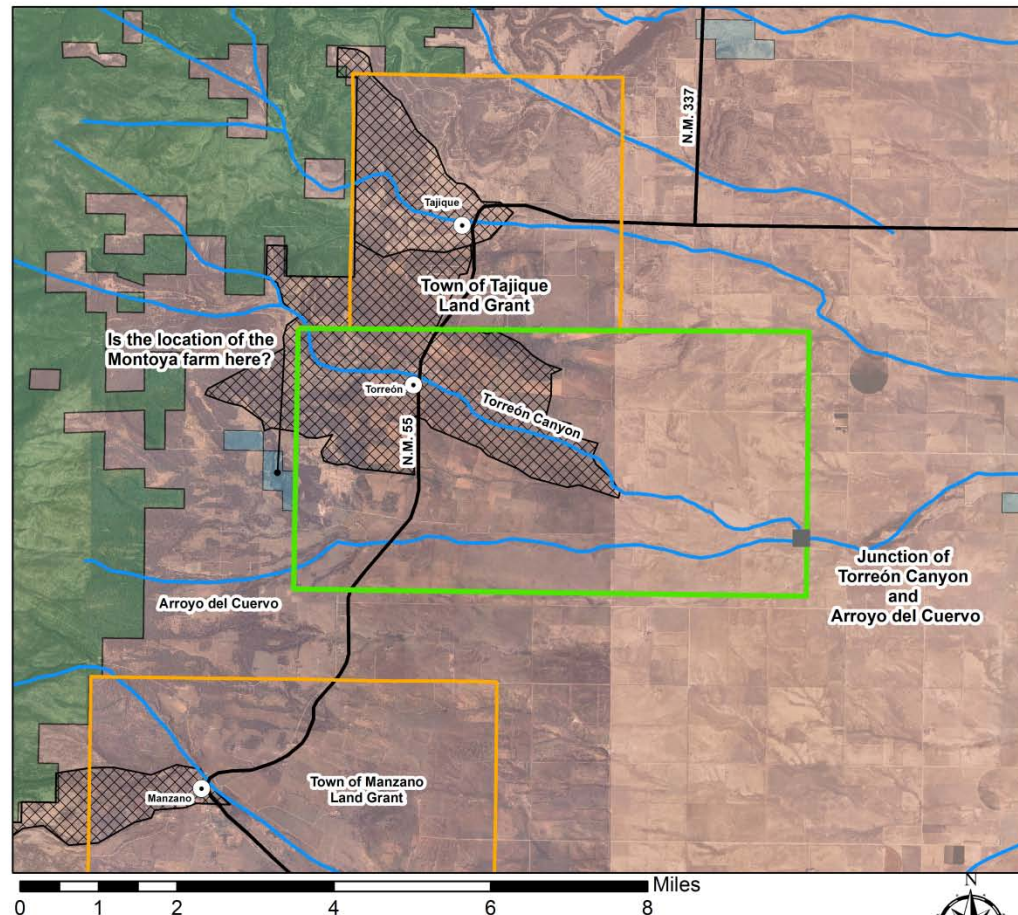
**UNM LGSP  
4/23/2012**

This is a reproduction of historic documents.  
This is not a survey.  
The accuracy of this map is relative to the information  
from which it was derived.  
Ownership is based on open-source BLM shapefiles.

0 2 4 8 12 16 Miles



# Torreón Land Grant Historic Boundaries



## Boundaries and Features

- Patent (13,993 ac.)
- Boundaries of Patented Land Grants
- Census 2010 Designated Place
- Water Channel
- Road
- Historic Landmark
- Populated Place

## Ownership Classes

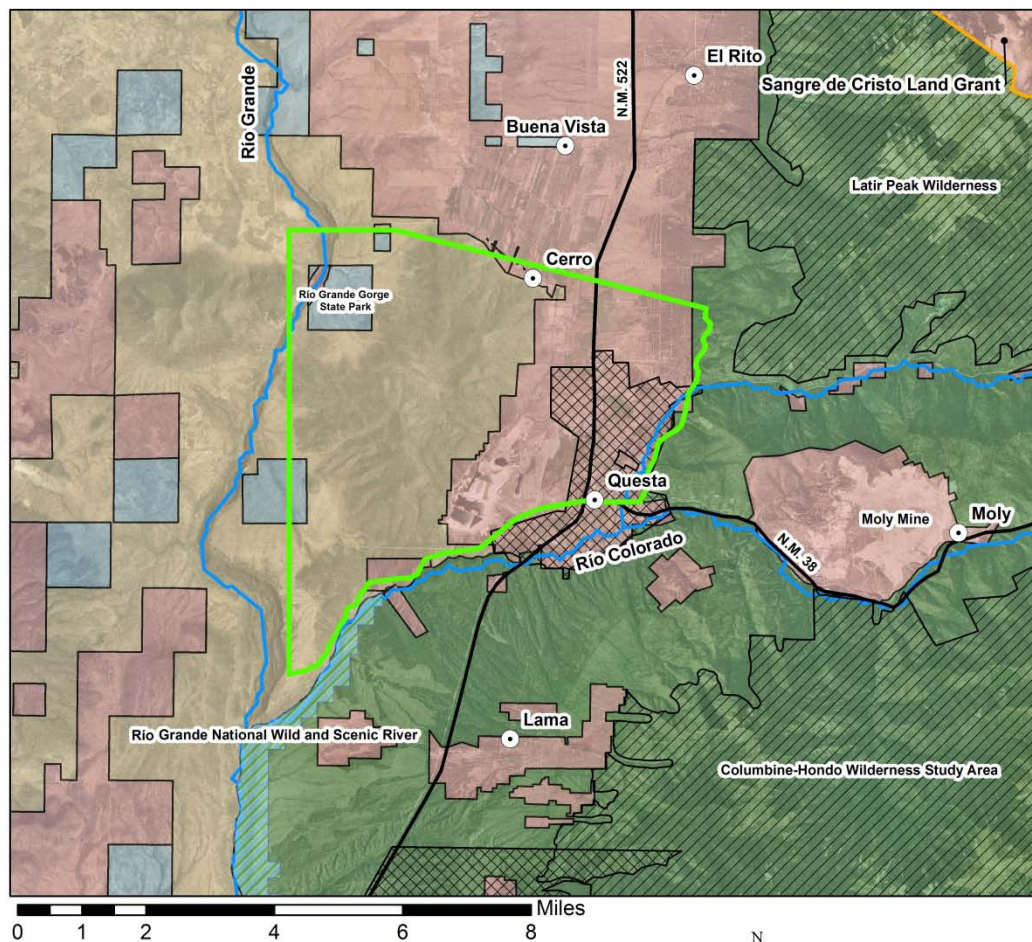
- U.S. Forest Serv.
- Private
- State

UNM LGSP  
4/23/2012

This is a reproduction of historic documents.  
This is not a survey.  
The accuracy of this map is relative to that of the information used to derive it.  
Ownership is based on open-source  
BLM shapefiles.



# San Antonio del Río Colorado Land Grant Historic Boundaries



## Boundaries and Features

- 1879 Survey (17,986 ac.)
- Boundaries of Patented Land Grants
- Census 2010 Designated Place
- Water Channel
- Road
- Populated Place

## Ownership Classes

- State
- Private
- BLM
- Forest Service
- USFS Wild & Scenic River
- Wilderness Area



UNM LGSP  
4/23/2012

This is a reproduction of historic survey documents.  
This is not a survey.  
The accuracy of this map is relative to that of the information used to derive it.  
Ownership is based on open source BLM shapefiles and shapefiles downloaded from the U.S. Forest Service website.

# 24 Land Grants

(Torreón and San Antonio del Río Colorado excluded)

Historic Acreage

Patented Acreage

4,179,434 ac.

2,581,080 ac.

38% land loss

Federal lands included in these maps that are  
subject to discussion re traditional use access

United States Forest Service

Bureau of Land Management

921,436.18 ac.

107,662.5 ac.

22% of Historic Boundaries

3% of Historic Boundaries



