



## Lincoln County Medical Center

Al Santos, Administrator  
Legislative Health and Human Services Committee  
August 26, 2015



## Not-for-Profit Critical Access Hospital

- 25 licensed beds
- Emergency care
- Operating room
- Day surgery
- Intensive care
- Obstetric unit
- Lab
- Pharmacy
- Radiology
- Medical-surgical unit
- Respiratory and physical therapy
- EMS fleet
- 6 primary and specialty care clinics



## Who We Are

- Originally opened in October 1950
- Affiliated with Presbyterian Healthcare Services since 1972
- Named a Top 100 Critical Access Hospital in 2013
- Recognized by The Joint Commission as a “Top Performer on Key Quality Measures for 2011 and 2012
- Early stages of a “Renovate & Replace” project



 PRESBYTERIAN | 3

## Providers and Patients

- 34 primary care and multi-specialty providers, including:



- Family medicine
- Internal medicine
- OB/GYN
- General surgeon
- Clinical pharmacist
- Dentists

- 43,459 outpatient clinic visits in 2014
- 12,394 outpatient ER visits in 2014
- 1,717 hospital discharges in 2014
- 336 babies born in 2014
- 2,368 patients transported by EMS

 PRESBYTERIAN | 4

## Community Commitment

Presbyterian exists to improve the health of the patients, members and communities we serve

Community health priorities:



- Eat well
- Be active
  - Hospital exercise facility open to community
- Avoid unhealthy substance use
  - Substance abuse prevention continuing education for providers



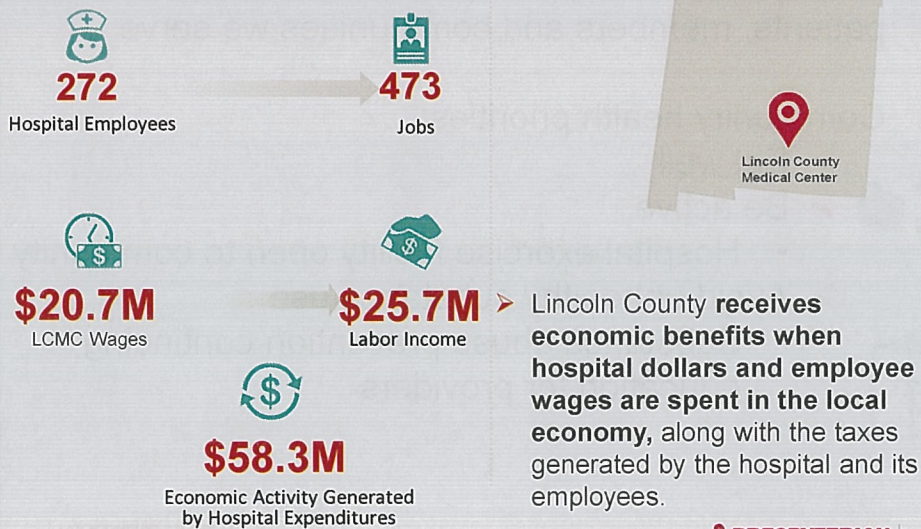
**PRESBYTERIAN** | 5

## Partnering with the Community

- Member, Lincoln County Community Health Council
- WMM only clinic in New Mexico to exceed 90% childhood immunization rate for the past 11 years
- LCCAP – Behavioral Health Triaging partnership with Lincoln County



## Economic Impact



 **PRESBYTERIAN**