

## Miners' Colfax Medical Center



- 25 bed Critical Access Hospital
- Long-term Care
- Primary and Specialty Care
- Black Lung and Respiratory Disease Outreach Program



## Miners' Colfax Medical Center – Service Area

The mission of Miners' Colfax Medical Center, a healthcare agency of the State of New Mexico, is to be a leader providing quality Acute Care, Long Term Care and related services to the beneficiaries of the Miner's Trust Fund of New Mexico and the people of Northeastern New Mexico and surrounding region.

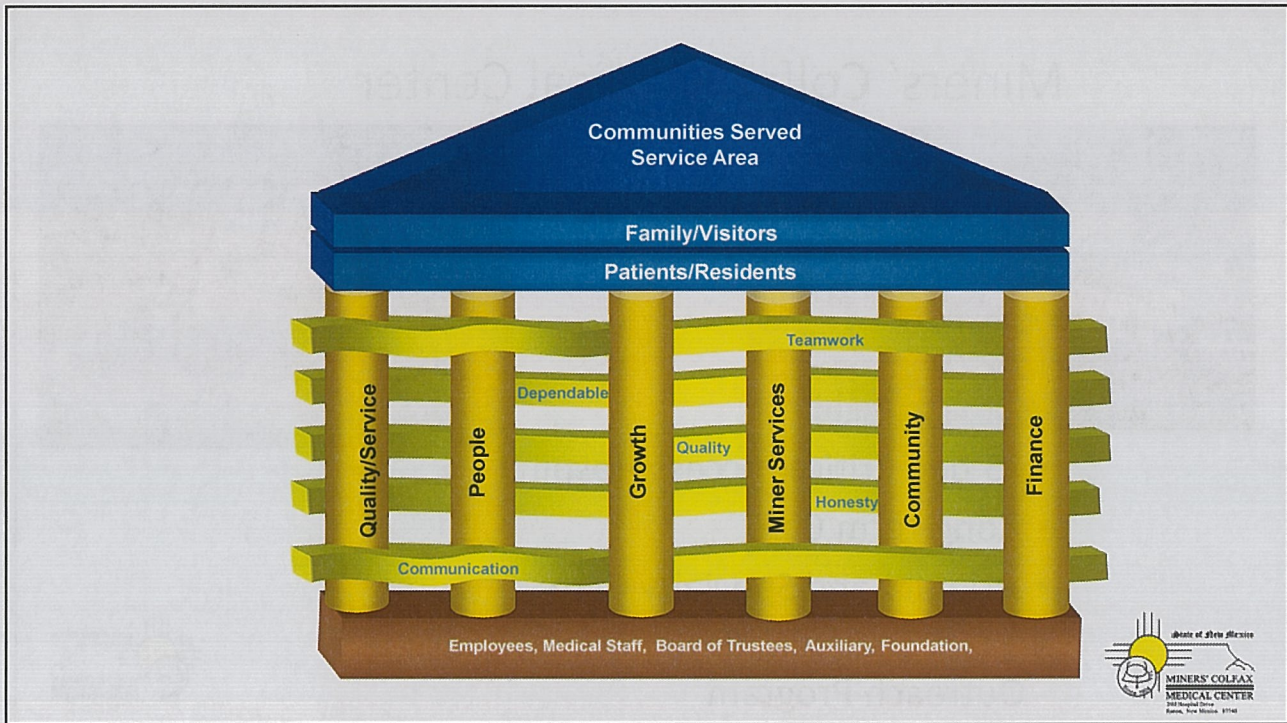
>15,000 people served in primary service region

>25,000 people served in extended service region

Only Obstetrics for over 100 miles

Only Intensive Care for over 100 miles





## Core Services Provided

### • Acute Care Hospital – 25 bed

- Emergency Department with 24/7 physician onsite
  - Trauma Level IV designation
- Technologically Advanced Diagnostics in:
  - Laboratory
  - Medical Imaging
  - Respiratory
- Medical & Surgical Acute Care
  - Dedicated Hospitalist services
  - Enhanced Care coordination with care team
- Intensive Care
- Surgical services
  - Inpatient and Outpatient
- Obstetrical and Gynecological services

### • Long-term Care - 47 Bed capacity

- Ranked top tenth percentile in the Nation last 2 years for quality and service.
- Ranked third in the State for low utilization of psychotropic medications.
- Wellness programs for residents
- Extended stay accommodations for visiting families



## Core Services

### • **Black Lung and Respiratory Disease Outreach Program**

- National leader in screening, disease identification, case management, and research for miners.
- Travels throughout State of New Mexico and western region
- Only program in Nation with mobile unit.
  - Technologically advanced mobile clinic
    - Satellite connectivity for Telehealth
    - Digital Medical Imaging
    - Integrated Electronic Health Record
    - Comprehensive health screening
- Partnered with University of New Mexico on advanced research.
- Fully Funded through Federal HRSA grants.

### • **Primary and Specialty Care**

- Integrated primary care clinic
  - Women's Health
  - Family Medicine
  - Internal Medicine
  - Pediatrics
  - Geriatrics
- Comprehensive Surgery
  - General Surgery
    - Screening, Diagnostic, Treatment
    - On-site Pathologist
  - Ophthalmology
- Oncology services in partnership with New Mexico Cancer Care



## New Services or Initiatives

### • **Workforce Development**

- Increasing community workforce for available healthcare careers.
- Work with State Higher Education programs on program alignment for nursing.
- Work with UNM on expanded residency programs.
- Work with State Personnel on strengthening Healthcare compensation models

### • **Community Services**

- Behavioral Health
  - Completed feasibility on strengthening: Inpatient, Outpatient, Adult, Adolescent, and Geriatric.
  - Budgeting for renovation of unoccupied space for services
  - Work in integrated model, including primary care
- Specialty Services
  - Expand onsite and telehealth for:
    - Orthopedics, Cardiology, Podiatry, Urology

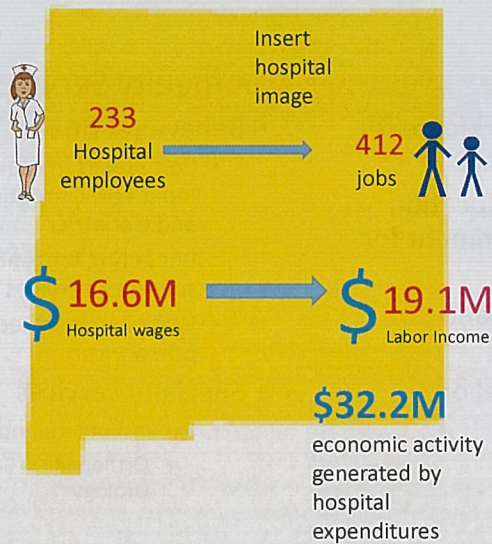


# Community

- Career Pathways Program
  - MCMC partners with Colfax County, Raton Public Schools, and regional educational partners.
    - Allows Junior and Seniors to become immersed in Healthcare fields
    - Student are eligible to be Certified Nurse assistants
    - Can obtain 18 college credits during program.
    - MCMC honored with State innovation award in 2015 for collaborative program
- The Center for Sustainable Communities
  - Collaboration with regional civic leaders on program development for creating healthy, sustainable communities.



## Economic Impact of Miners' Colfax Medical Center



Raton as a whole receives economic benefits when hospital dollars and employee wages are spent in the local economy along with the taxes generated by the hospital and its employees. These are called secondary jobs and secondary income, and are measured with economic multipliers\* calculated for Colfax county.

