



Gerald Champion
Regional Medical Center
Our Family Caring For Yours



Legislative Health and Human Services Committee
August 25, 2015

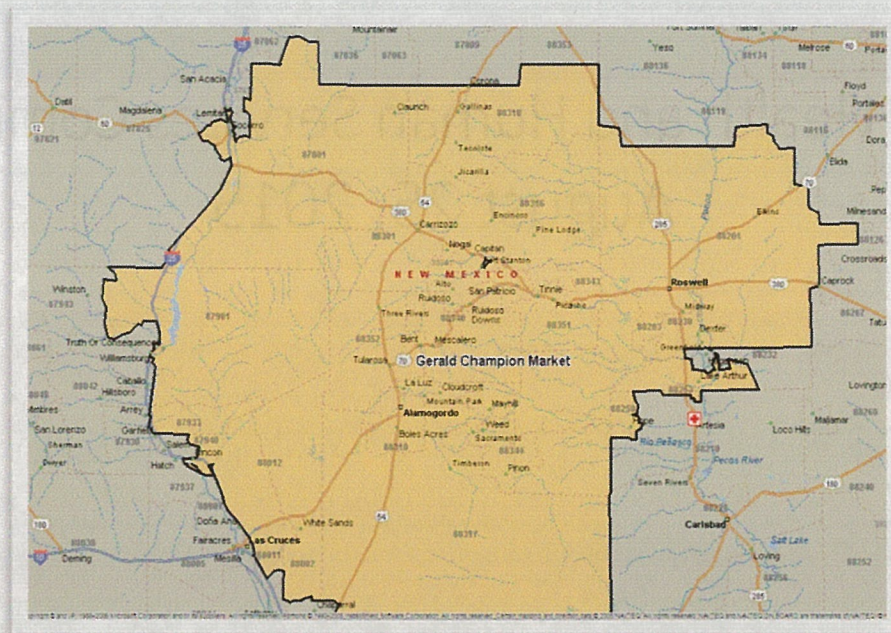
Gerald Champion Regional Medical Center's Behavioral Health Services began in 2009 in partnership with Diamond Healthcare out of Richmond, Va. "Life Transitions" opened its doors in July 2010 and since has evolved from its initial 12 inpatient bed service to the following:

- A 17-bed Older Adult inpatient unit
- An intensive outpatient program for older adults
- An intensive outpatient for active duty/dual diagnosis
- Individual therapy for ages 18 and up
- Genesight RX testing
- Medication management clinic in Alamogordo and Ruidoso
- Medication management services to (4) long term care facilities
- Provision of Electroconvulsive Therapy (ECT) – one of two hospitals in NM providing this service, UNM Hospital being the other.

In July we broke ground for our GCRMC Behavioral Medicine Department that will expand our inpatient services from 16 to 36 beds and renovate our outpatient clinic. These changes will allow us to expand beyond our current services to Adult and Gero-psych patients to Active Duty Military, PTSD and Co-occurring mental and substance use patients.



Our market area is seen below although we receive patients from as far away as Albuquerque.



Legislative Health and Human Services Committee

– August 25, 2015

Information requested for each of CY 2012, 2013, 2014 and first six months of 2015 **on quarterly basis**, with breakdown for adults and children:

1. Number of psychiatric beds;

2012	2013	2014	2015
12	12	17	17

2. Data on utilization of psychiatric beds, including average length of stay;

	2012	2013	2014	2015
Discharges	247	352	459	694
Average Length of Stay	8.3	8.8	8.1	8.5

3. Data on 30, 60 and 90 readmission rates for behavioral health patients for any cause;

	2012	2013	2014	2015
30 readmissions	300/39 - 13%	373/37 - 10%	602/61 - 10%	484/42 - 11%
60 readmissions	300/56 - 18%	373/52 - 13%	602/80 - 13%	484/66 - 13%
90 readmissions	300/64 - 21%	373/63 - 16%	602/99 - 16%	484/75 - 15%

4. Number of behavioral health ED visits (please identify % of those involving diagnosis of co-occurring substance use);

	2012	2013	2014	2015
ED Visits		168*	667	742
% co-occurring Substance use		94 – 56%	86 – 12.9%	80 – 10.8%

- Data based on transfers out for BH. Facility tracking began FY14.

5. Number of substance use ED visits (identifying substance, i.e. alcohol, opioids, poly-drug);

	2012	2013	2014	2015
ED Visits	28,191	27,198	27,641	29,941
Substance use visits	506	343	415	343

6. Outcome data on connection to care or ambulatory follow-up, for 7 and 30 days post discharge for behavioral health patients.

	2012	2013	2014	2015
7 day post discharge	Has not been tracked			
30 day post discharge				

Staff completes call backs on at least 95% of the patients that have been discharge from the unit within 48 hours.

Information requested for each of CY 2012, 2013, 2014 (annually) and first 6 months of 2015:

1. The number of "super-utilizers" with chronic behavioral health conditions who accumulated a large number of ED visits and/or hospital admissions that might have been prevented with early intervention or primary care, with associated annual cost for each such patient. For purposes of this request, a "super-utilizer" is defined as an individual with a behavioral health diagnosis who accesses the ER for any preventable reason (i.e. one that could have been prevented with adequate outpatient or primary care) more than twice in 30-days, or who is readmitted to the hospital within 90 days of discharge. **This information is not tracked.**

Robert J. "Jim" Heckert, FACHE
Chief Executive Officer, Gerald Champion Regional Medical Center

Robert J. "Jim" Heckert has been the Chief Executive Officer at Gerald Champion Regional Medical Center since March 2008 and has been involved in numerous local and state organizations. He is a fellow of the American College of Healthcare Executives, member of the Alamogordo Rotary Club, the Otero County Chamber of Commerce, Committee of 50, New Mexico Hospital Association, Otero County United Way and Leadership New Mexico. He was honored with the Helen Kirk Award by Otero County United Way for his community efforts in 2009, received Paul Harris Fellow in 2011 and received American Hospital Association Grassroots Champion for advocating for rural health care in 2013.

Prior to coming to the hospital, Mr. Heckert served from 2001 to 2008 as the CEO of Daviess Community Hospital in Washington, Indiana. While in Indiana, he served on the Board of Directors for the Indiana Hospital and Health Association and as Chairman of the Council on Rural Health. In 2001 he retired from the U.S. Army having served 30 years in various assignments including Executive Officer at the Office of the Surgeon General in Falls Church, Virginia and Chief of Staff at Walter Reed Army Medical Center in Washington, D.C.

Since coming to GCRMC, his team has:

- Initiated Clinical Integration Program with Sierra Providence Health Network for Interventional Cardiology
- Completed 2 major hospital renovations totaling \$55 million dollars in hospital expansion.
- Upgraded the Hospitalist, ER and Anesthesia programs.
- Successfully opened an Geriatric Psychiatric and Rehabilitation Unit, and Wound Care
- Donated office space to support the American Cancer Society and the Sexual Assault Nurse Examiners (SANE) program.
- Received Pinion Recognition from Quality New Mexico
- Attained HIMSS Level 5 certification, placing the hospital in the top 16% of hospitals nationally in level of Electronic Health Record integration.

Frank J. Pieri, MD, MBA
Medical Director, GCRMC Behavioral Medicine Department

Dr. Frank Pieri has been the Medical Director of GCRMC Behavioral Medicine Department since July 2013. He is Board Certified in Psychiatry and Neurology. He received his medical degree from Loyola University of Chicago, Strich School of Medicine in Maywood, Illinois, completed his residency in Psychiatry at the University of Chicago Hospital, Chicago, Illinois and received his MBA from Loyola University of Chicago. He is a member of the American Psychiatric Association and the Psychiatric Medical Association of New Mexico. in 1994. He was honored with the GCRMC Physician of the Year Award in 2015.

Prior to coming to the hospital, Dr. Pieri had a private practice for many years in Chicago, Illinois and also served in numerous distinguished positions to include Medical Director, Madden mental Health Center, Hines, Illinois; Director, Inpatient Psychiatry Teaching Services, Chicago College of Osteopathic Medicine, Olympia Fields, Illinois; and Clinical lecturer in Psychiatry, University of Arizona, Tucson.

Since coming to GCRMC, Dr. Pieri has:

- Expanded both the Inpatient and Outpatient Behavioral Health Services
- Expanded services to include Adult Behavioral Health Services
- Initiated a triage system to help the Emergency Room with patients with psychiatric conditions
- Started a new service line of Electroconvulsive Therapy (ECT)

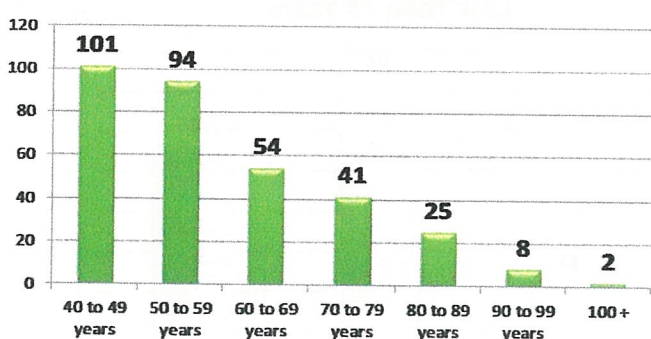
FY14 Behavior Health Dispositions

Disposition of BH <40	Jul-13	Aug-13	Sep-13	Oct-13	Nov-13	Dec-13	Jan-14	Feb-14	Mar-14	Apr-14	May-14	Jun-14	Total
Census	2,100	2,225	2,208	2,395	2,216	2,486	2,456	2,052	2,405	2,377	2,470	2,251	27,641
TOTAL PATIENTS	56	55	51	55	42	54	45	55	62	68	64	60	667
Total <40 Patients	32	23	22	22	27	34	24	28	34	35	32	29	342
AMA	1								1		1		3
LWOT			1		1								2
Home	17	7	5	8	7	7	3	8	9	11	4	3	89
MST										1			1
ICU	3	2	3	2	3	3		1			4	3	24
Police/Jail	2				2	3	3				3	1	14
Transfer	9	12	10	9	9	7	12	12	12	13	13	18	136
Eloped		1		1	1	1			2				6
Life Transitions		1	3	1	4	13	6	7	10	10	7	4	66
Disposition of BH 40+	Jul-13	Aug-13	Sep-13	Oct-13	Nov-13	Dec-13	Jan-14	Feb-14	Mar-14	Apr-14	May-14	Jun-14	Total
Total 40+ Patients	24	32	29	33	15	20	21	27	28	33	32	31	325
AMA	3	1											4
LWOT			1		1		1						3
Home	5	12	8	8	4	2	3	6	1	6	3	6	64
MST	1					1				1		1	4
ICU	4	5	4	3		2	2	1	2	1	5	5	34
Police/Jail									1			1	2
Transfer	1	2	1	3	2	3	3	3	3	4	3	1	29
Eloped	1								2	1			4
Life Transitions	9	12	15	19	8	12	12	17	19	20	21	17	181
Percentage	2.67%	2.47%	2.31%	2.30%	1.90%	2.17%	1.83%	2.68%	2.58%	2.86%	2.59%	2.67%	2.41%

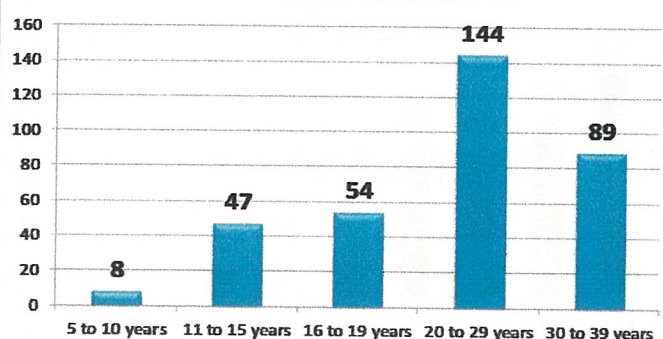
FY14 Behavior Health Patients by Age

Disposition of BH <40	Jul-13	Aug-13	Sep-13	Oct-13	Nov-13	Dec-13	Jan-14	Feb-14	Mar-14	Apr-14	May-14	Jun-14	Total
Census	2,100	2,225	2,208	2,395	2,216	2,486	2,456	2,052	2,405	2,377	2,470	2,251	27,641
TOTAL PATIENTS	56	55	51	55	42	54	45	55	62	68	64	60	667
Total <40 Patients	32	23	22	22	27	34	24	28	34	35	32	29	342
5 to 10 years		2	1	1					1	1		2	8
11 to 15 years	1	4	2	2	5	4	2	6	5	6	4	6	47
16 to 19 years	2	4	7	6	3	4	2	5	5	6	3	7	54
20 to 29 years	21	10	9	9	8	10	13	13	13	14	19	5	144
30 to 39 years	8	3	3	4	11	16	7	4	10	8	6	9	89
Disposition of BH 40+	Jul-13	Aug-13	Sep-13	Oct-13	Nov-13	Dec-13	Jan-14	Feb-14	Mar-14	Apr-14	May-14	Jun-14	Total
Total 40+ Patients	24	32	29	33	15	20	21	27	28	33	32	31	325
40 to 49 years	11	14	12	7	5	4	4	5	11	12	6	10	101
50 to 59 years	5	4	8	14	4	5	8	11	6	10	8	11	94
60 to 69 years	4	6	2	5	2	5	5	4	5	3	8	5	54
70 to 79 years		5	4	2	3	3	3	4	5	5	5	2	41
80 to 89 years	4	2	2	3	1	2	1	1	1	2	4	2	25
90 to 99 years		1	1	2				2		1	1		8
100+						1						1	2
Percentage	2.67%	2.47%	2.31%	2.30%	1.90%	2.17%	1.83%	2.68%	2.58%	2.86%	2.59%	2.67%	2.41%

40 Years and Older



Less Than 40 Years



FY15 Behavior Health Dispositions

Disposition of BH <18	FY14	Jul-14	Aug-14	Sep-14	Oct-14	Nov-14	Dec-14	Jan-15	Feb-15	Mar-15	Apr-15	May-15	Jun-15	Total
Census	27,641	2,310	2,521	2,312	2,407	2,174	2,709	2,689	2,398	2,813	2,618	2,597	2,393	29,941
TOTAL PATIENTS	667	58	63	50	67	62	49	62	54	73	60	68	76	742
Total <18 Patients	83	9	8	11	10	9	11	8	11	15	10	11	6	119
AMA														0
LWOT		1									1			2
Home		2	3	3	5	2	1		6	3	1	1	2	29
MST														0
ICU				1										1
Police/Jail														0
Transfer		6	5	7	5	7	10	8	5	12	8	10	4	87
Eloped														0
Life Transitions														0

Disposition of BH 18+	FY14	Jul-14	Aug-14	Sep-14	Oct-14	Nov-14	Dec-14	Jan-15	Feb-15	Mar-15	Apr-15	May-15	Jun-15	Total
Total 18+ Patients	584	49	55	39	57	53	38	54	43	58	50	57	70	623
AMA														0
LWOT			1		1									2
Home		12	16	10	12	14	12	12	15	7	17	20	16	163
MST			2	1	1									4
ICU		2	3	1	2					3	2	2		15
Police/Jail														0
Transfer		9	11	5	11	17	6	12	10	19	9	9	15	133
Eloped		2	1	1	2				1		1	2		10
Life Transitions		24	21	21	28	22	20	30	17	29	21	24	39	296

Percentage of ED Visits	2.41%	2.51%	2.50%	2.16%	2.78%	2.85%	1.81%	2.31%	2.25%	2.60%	2.29%	2.62%	3.18%	2.48%
-------------------------	-------	-------	-------	-------	-------	-------	-------	-------	-------	-------	-------	-------	-------	-------

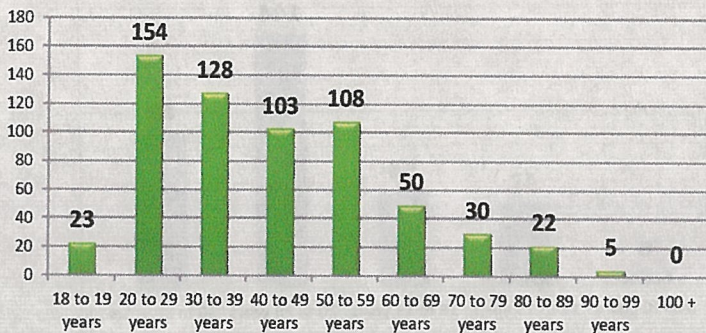
FY15 Behavior Health Patients by Age

Disposition of BH <18	FY 14	Jul-14	Aug-14	Sep-14	Oct-14	Nov-14	Dec-14	Jan-15	Feb-15	Mar-15	Apr-15	May-15	Jun-15	Total
Census	27,641	2,310	2,521	2,321	2,407	2,174	2,709	2,689	2,398	2,813	2,618	2,597	2,393	29,950
TOTAL PATIENTS	667	58	63	50	67	62	49	62	54	73	60	68	76	742
Total <18 Patients	83	9	8	11	10	9	11	8	11	15	10	11	6	119
5 to 10 years		1	2	2	0	1				3			2	11
11 to 15 years		3	3	5	3	7	7	6	8	4	6	8	2	62
16 to 17 years		5	3	4	7	1	4	2	3	8	4	3	2	46

Disposition of BH 18+	FY 14	Jul-14	Aug-14	Sep-14	Oct-14	Nov-14	Dec-14	Jan-15	Feb-15	Mar-15	Apr-15	May-15	Jun-15	Total
Total 18+ Patients	584	49	55	39	57	53	38	54	43	58	50	57	70	623
18 to 19 years		3	3	2	0	1	2	1	3	1	1	4	2	23
20 to 29 years		14	10	12	14	14	10	10	13	17	10	14	16	154
30 to 39 years		7	18	8	9	9	7	15	7	11	10	13	14	128
40 to 49 years		9	8	2	10	11	5	6	5	13	6	9	19	103
50 to 59 years		10	4	6	9	8	9	14	6	10	14	8	10	108
60 to 69 years		3	6	3	8	3	2	5	5	4	5	2	4	50
70 to 79 years		2	4	3	5	4	1	2	1		3	2	3	30
80 to 89 years		0	2	3	1	2	2	0	2	2	1	5	2	22
90 to 99 years		1	0	0	1	1		1	1					5
100 +														0

Percentage of ED Visits	2.41%	2.51%	2.50%	2.15%	2.78%	2.85%	1.81%	2.31%	2.25%	2.60%	2.29%	2.62%	3.18%	2.48%
-------------------------	-------	-------	-------	-------	-------	-------	-------	-------	-------	-------	-------	-------	-------	-------

18 Years and Older



Less Than 18 Years

