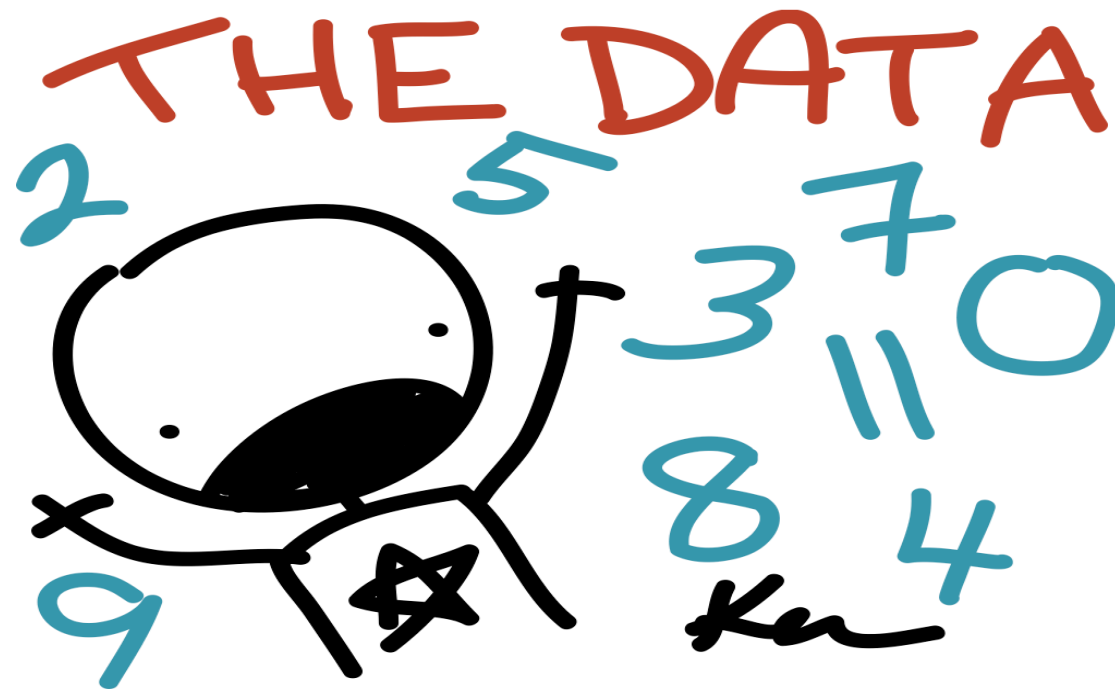


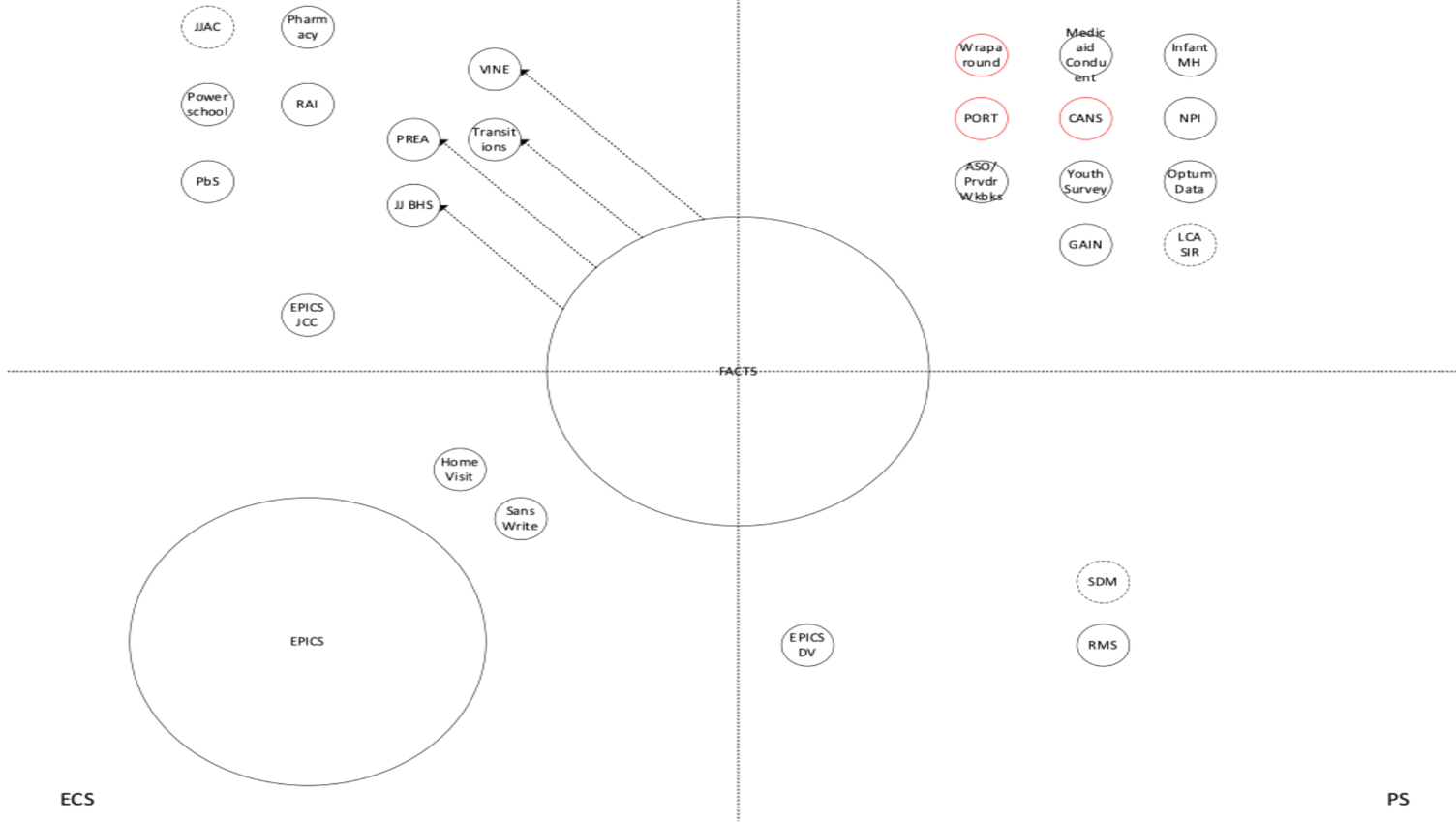
Children, Youth, and Families Data at CYFD



JJS

Red silos: Grant funding ending in 09/2018 and needs to bring in-house

BHS

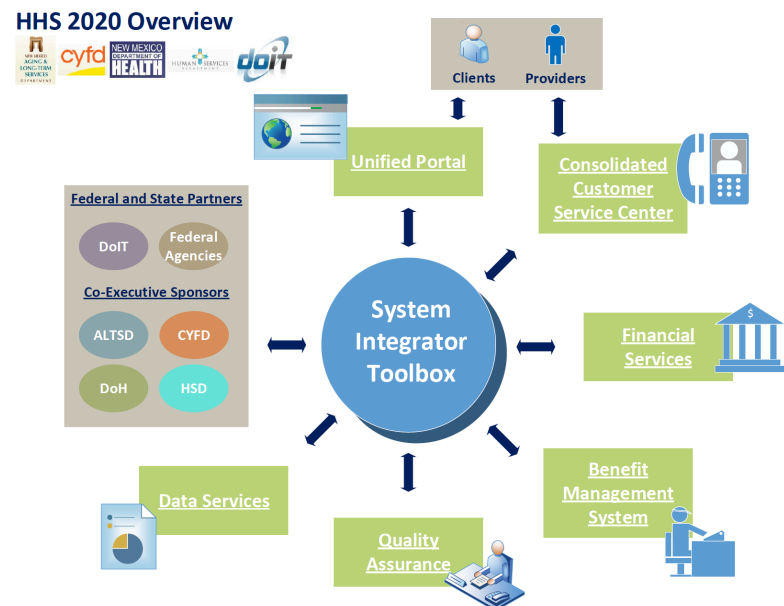


ECS

PS

HHS 2020

- HSD, DOH, ALTD + CYFD are Executive Co-Sponsors of HHS 2020 and meet monthly to set direction and provide oversight for project
- CYFD's plan to build an MMIS system that is CCWIS compliant will allow for:
 - Integrated data
 - Individual client number across system
 - Increased access to entitlements and supports for children and families
 - Increased data to inform decisions
 - Publicly available dashboards for increased accountability



Simultaneous, Modular Build for Multiple Compliance Requirements

Base Capability

Unlimited
modules can be
added at any
time.

Module (ex. CCWIS &
MMISR)

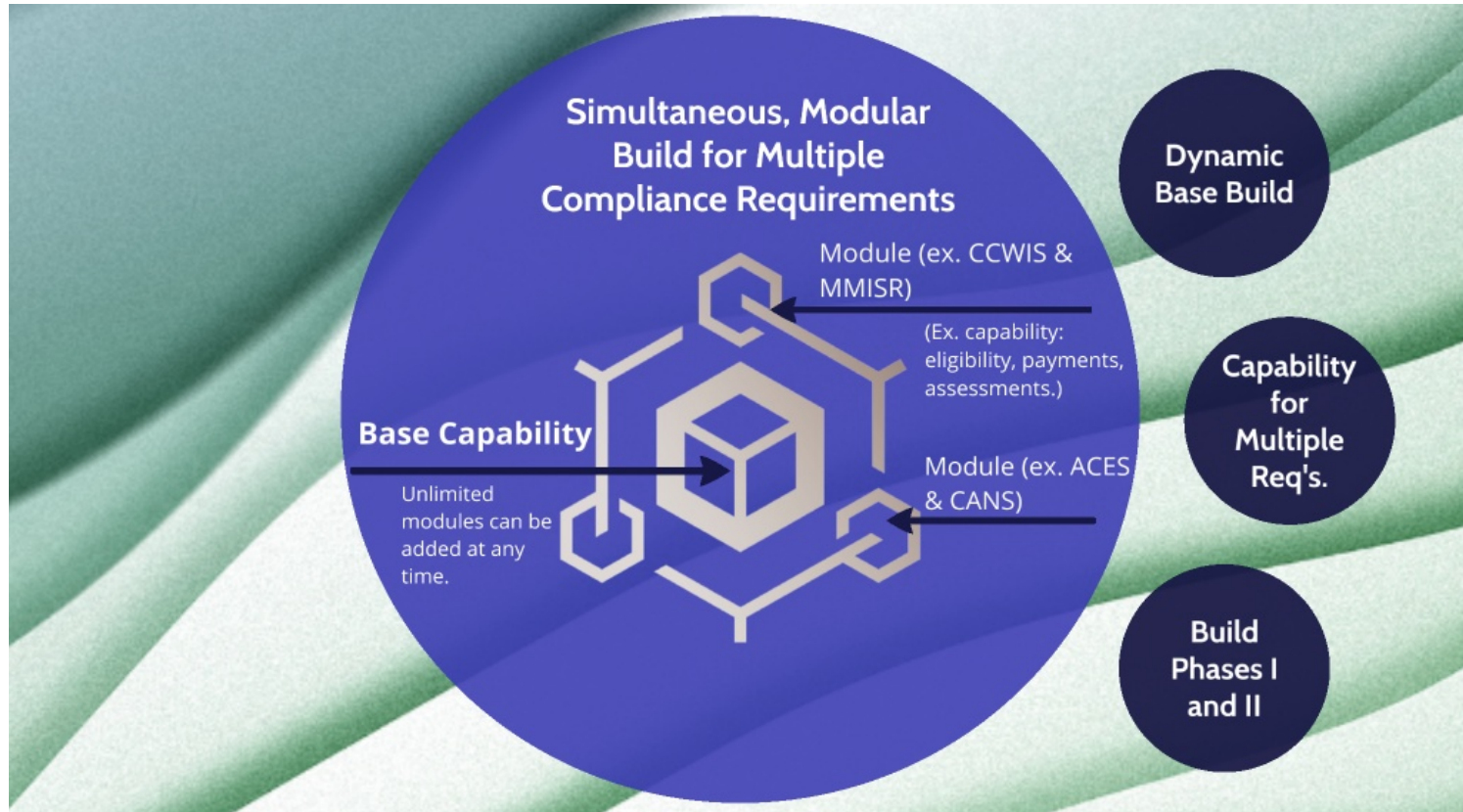
(Ex. capability:
eligibility, payments,
assessments.)

Module (ex. ACES
& CANS)

Dynamic
Base Build

Capability
for
Multiple
Req's.

Build
Phases I
and II



Phase 1 Build Proposal

Comprehensive base & module build prioritizing CCWIS and MMISR compliance

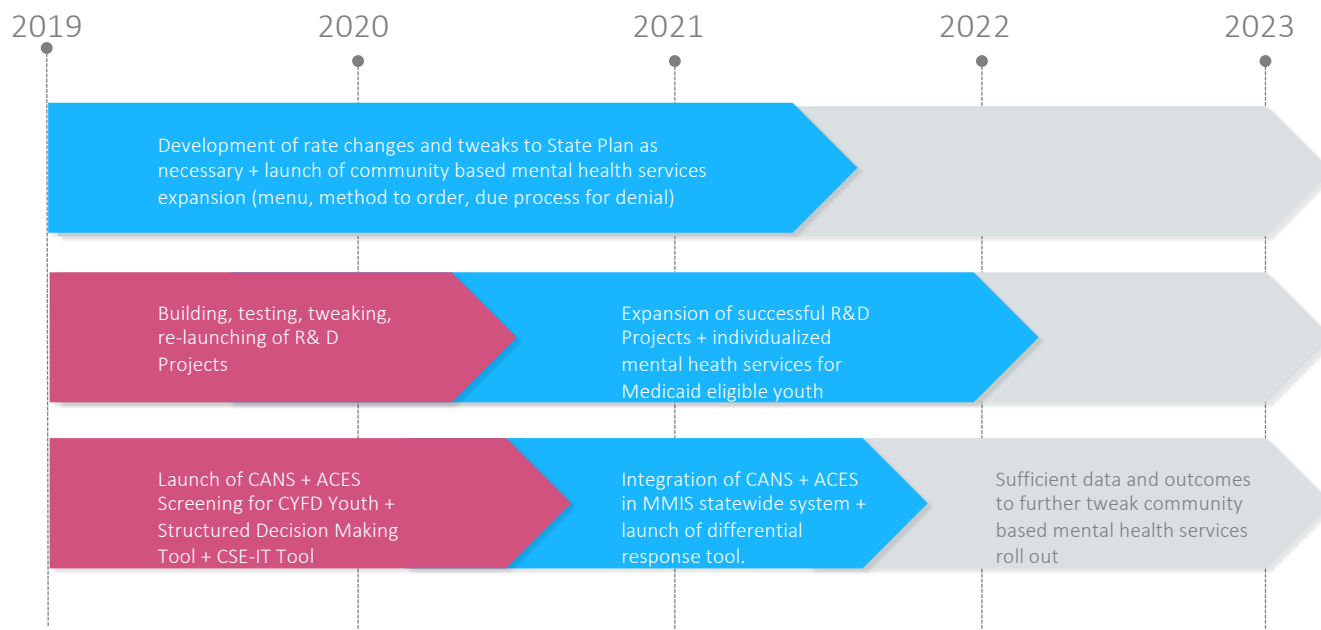
- 1/2 CCWIS module build
- Pre-MMISR module capability build
- 1/2 AFCARS module build
- CANS build
- ACES build

Combining Builds Saves Time

Building together enables interoperability

Pre-MMISR in Phase 1 = 75% match

What's Next – Data Driven Decisions and Services Growth



Getting to Data-Driven Decision Making

What is the CANS Tool– Child and Adolescent Needs & Strengths?

The CANS tool engages the client in co-assessing with providers their needs and their strengths/assets and identifying ways that their strengths/assets can support their needs.

The tool also helps guide choices of additional services that may help the client in having an improved quality of life.

The CANS Tool can be scored, which helps prioritize areas that need to be addressed, or un-scored, which is effective in simply outlining needs, strengths and supporting other diagnostic and assessment tools.

Getting to Data-Driven Decision- Making

What are ACES – Adverse Childhood Experiences?

ACES is a term used for any experience a child has that overwhelms their ability to cope in healthy ways.

This overwhelm is known as trauma, and it significantly impacts a child's brain and body development, often causing difficulties in learning, behavior, mental and physical health that continue throughout their lifetimes.

The ACES Tool screens for 10 Adverse Childhood Experiences and produces a score of 1-10, with higher scores indicating higher risk for physical, mental health and other outcomes.

ACES/CANS Combined Tool Usage

Utilizing CANS in conjunction with ACES assists with:

- Identifying developmental & behavioral symptoms related to ACES, their intensity and their impact on life domain areas;
- Helping guide the creation of service plans, inform referrals and methods of service provision, including Trauma-Informed Care;
- Identifying appropriate providers and services for the client;
- Prioritizing immediate concerns for service planning, including safety concerns.

ACES/CANS Combined Tool & Protective or Mitigating Factors

Regardless of the client's age, the ACES/CANS Tool:

- Identifies strengths and assets of the young person that indicate areas of opportunity for continued growth and positive contribution to the community.
 - Strengths and assets, also known as Protective Factors, are elements that can mitigate the effects of ACES when appropriately channeled into positive, pro-social & productive pursuits.
- CYFD's use of the ACES/CANS tool identifies the strengths that a client has that can help support their needs specifically in relationship to their ACES score, providing a more holistic view of areas of focus for service planning and provision.
 - CYFD and provider organizations can use this tool to assist in planning positive opportunities and experiences for the client, in line with their strengths and assets.

Data Informed Decisions – Assess, Know, Act

Structured Decision Making
Tool - Rubric to make stressful
decisions

Accountability and Impact
Project with Falling Colors (+
Predictive Analytics)

Differential Response -
transforming our hammers to
tools

CSE-IT - Only normed tool to
help identify survivors of child
sex trafficking

