

Public Health Surveillance Health Assessment Chronic Pain Study

A Presentation to the Legislative Health and Human Services
Committee by the New Mexico Department of Health

October 20, 2015



Outline

- Public Health Surveillance
 - Surveillance 101
 - Key Public Health Surveillance Datasets
- Health Assessment
 - Assessment Role of Government
 - Indicators of New Mexico Health Status
- Pain Study



Data are Used for evidence-based decisions

- Disease surveillance and outbreak investigation
- Syndromic surveillance
- Healthcare acquired infection surveillance and prevention
- Public information, press releases (food borne, plague, Hanta virus, etc.)
- Emergency management and planning (Ebola, wildfires, etc.)
- Health promotion program planning
- Policy decision-making
- Community health assessment



73

PUBLIC HEALTH ASSESSMENT

Lois M. Haggard, PhD
Community Health Assessment Program



74

IOM on the Role of Government in Public Health

- The core functions of government in public health:
 - to develop policy that supports the health of populations,
 - to assure access to health care and the quality of that care, and
 - to assess the health status of the population, including public health surveillance

Institute of Medicine: Committee for the Study of the Future of Public Health: Division of Health Care Services (1988) The Future of Public Health. Washington, D.C.: National Academies Press.



78

Assessment Function of Public Health

- Assessment is:
 - regular and systematic
 - collection, assembly, analysis, and dissemination
 - of information about the health of a community.

Institute of Medicine (1988) The Future of Public Health, National Academies Press.



The S.O.A.P. Model for Clinical and Community Health Assessment

	Clinical Assessment	Community Assessment
Subjective	Presenting complaint, symptoms, pain, medical interview	Community members, advisory boards, CBOs, focus groups, key informant interviews, qualitative surveys
Objective	Physical examination, Heart rate, BP, Blood test, X-ray	Morbidity, mortality rates, behavioral data, social determinants, quantitative surveys
Assessment	What is the diagnosis?	What are the priority health and safety issues?
Plan	What treatment will be most effective?	What interventions will be most effective?



77

New Mexico's Indicator-Based Information System (NM-IBIS)

... Monitoring New Mexico's Health

Path: [NM-IBIS](#) » [about](#)

<https://ibis.health.state.nm.us>

About NM-IBIS | Health Topics | Health Indicator Reports | Explore Communities | Explore Datasets | Resources | My Data

Welcome

Contents and Usage

What's New?

Contact Information

Welcome to NM-IBIS - New Mexico's Public Health Data Resource

Get health information about Your Community:

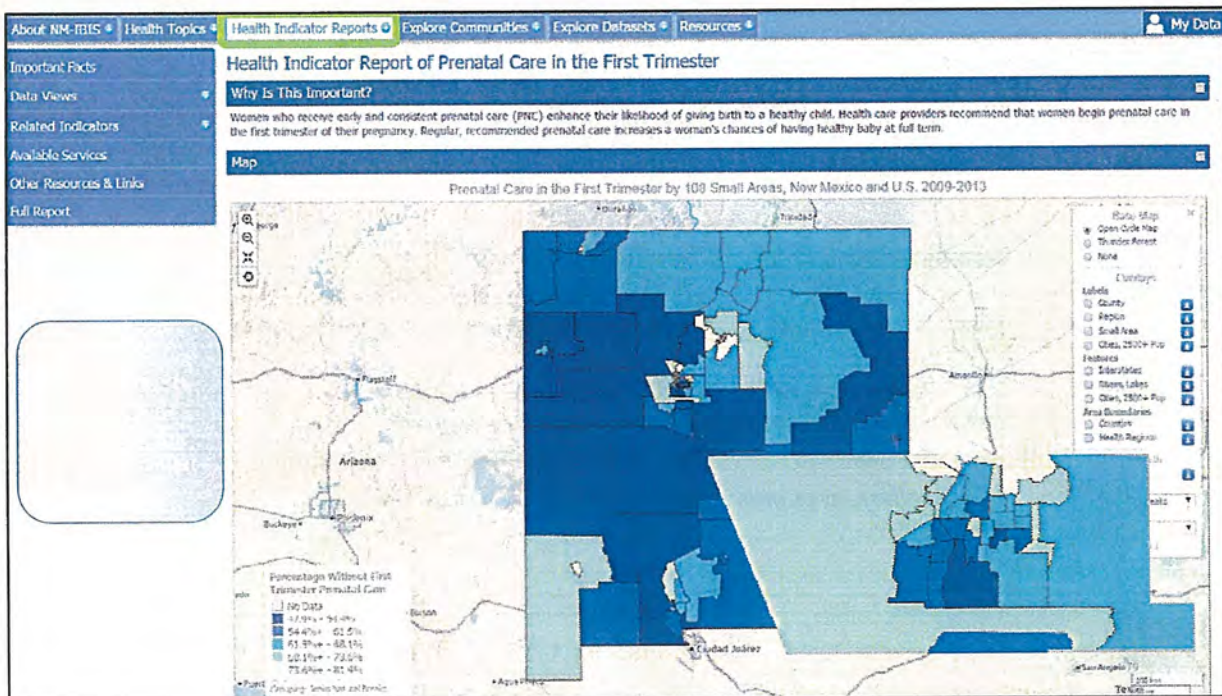
- [Leading Causes of Death for Doña Ana County](#)
- [How Bernalillo County Compares](#)
- [select from ALL COMMUNITY REPORTS...](#)

NM-IBIS is your source for data and information on New Mexico's priority public health issues. The mission of the New Mexico Department of Health is to promote health and wellness, improve health outcomes, and assure safety net services for all people in New Mexico. NM-IBIS provides access to the data that can help provide answers to realize the health goals of New Mexico.

Watch the YouTube Video

You can watch a short [NM-IBIS YouTube video](#) that provides an overview of the site.

78



[About NM-IBIS](#) | [Health Topics](#) | **Health Indicator Reports** | [Explore Communities](#) | [Explore Datasets](#) | [Resources](#)

Population Characteristics Topic Pages

[Demographic Characteristics](#) | [Education](#) | [Income and Poverty](#) | [Employment](#)

Risk and Resiliency Factors Topic Pages

[Healthy Behaviors](#) | [Physical Environment](#)

[Physical Activity](#) | [Nutrition](#) | [Weight Status](#) | [Alcohol](#) | [Tobacco](#) | [Injury](#) | [Physical Environment](#)

Health Care Services and Systems Topic Pages

[Access to Care](#) | [Use of Preventive Services](#)

[Health Care Availability](#) | [Health Care Coverage and Cost](#) | [Immunization](#) | [Cancer Screening](#) | [Cardiovascular Screening](#) | [Oral Health](#) | [Other Preventive Care](#)

Health Outcomes Topic Pages

[Mothers and Infants](#) | [Leading Causes of Death](#) | [Infectious Diseases](#) | [Cancer](#) | [Chronic Diseases and Conditions](#) | [Injury and Violence](#) | [Substance Abuse](#) | [Mental Health](#) | [Summary Measures of Health](#)

80

[About NM-IBIS](#) | [Health Topics](#) | [Health Indicator Reports](#) | [Explore Communities](#) | [Explore Datasets](#) | [Resources](#) | [My Data](#)

Alphabetical Indicator Profile Selection List

Welcome to the alphabetical selection list of all available health indicator reports. To view a health indicator profile report, click on the item's title located in the following list. The [Indicator Profile by Topic Selection Index](#) provides a hierarchical selection menu that organizes the health indicator profile reports by topic/subject.

Index: [A](#) [B](#) [C](#) [D](#) [E](#) [F](#) [G](#) [H](#) [I](#) [J](#) [K](#) [L](#) [M](#) [N](#) [O](#) [P](#) [Q](#) [R](#) [S](#) [T](#) [U](#) [V](#) [W](#) [X](#) [Y](#) [Z](#)

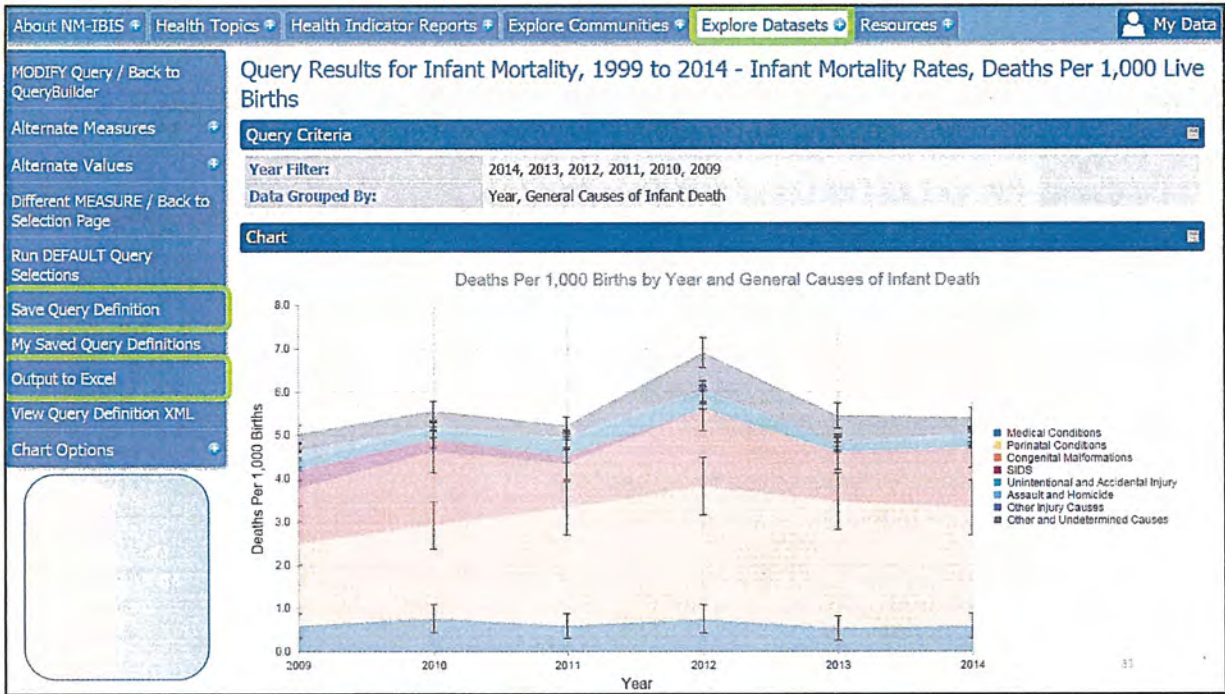
Indicator Profile Title	Published Date
Air Quality: Ozone Level	07/03/2013
Air Quality: Particulate Matter (PM2.5) Level	07/03/2013
Alcohol - Alcohol-Related Death	09/28/2015
Alcohol: Adult Binge Drinking	12/01/2014
Alcohol: Adult Heavy Drinking	12/01/2014
Alcohol: Alcohol-Related Chronic Liver Disease Deaths	12/01/2014
Alcohol: Alcohol-related Chronic Disease Deaths	12/01/2014
Alcohol: Alcohol-related Injury Deaths	12/01/2014
Alcohol: Alcohol-related Motor Vehicle Traffic Crash (MUTC) Death	12/01/2014
Alcohol: Drinking and Driving Among Adults	12/01/2014
Alcohol: Drinking and Driving Among Youth	12/01/2014
Ambulatory Care Sensitive Conditions - Acute	04/29/2015
Ambulatory Care Sensitive Conditions - Chronic	04/29/2015
Arthritis Prevalence	06/14/2012
Asthma Emergency Department Visits	10/30/2014

[About NM-IBIS](#) | [Health Topics](#) | [Health Indicator Reports](#) | [Explore Communities](#) | [Explore Datasets](#) | [Resources](#) | [My Data](#)

Community Snapshot for Bernalillo County - Community Health Status Indicators

Overview

Indicator	Community Data			Comparison Values	
	Count/Rate	Confidence Interval*	Compared to NM	New Mexico	U.S.
- RISK AND RESILIENCY FACTORS -					
Adult Physical Activity, 2011, 2013 (Percentage of Adults) Among adults, the proportion who engage in aerobic physical activity of at least moderate intensity for at least 150 minutes/week, or 75 minutes/week of vigorous intensity, or an equivalent combination.	45.1%	(42.8% - 47.4%)	≈	46.4%	50.8%
Adolescent Physical Activity, 2013 (Percentage of Students) Students who were physically active for a total of at least 60 minutes per day	26.3%	(23.5% - 29.4%)	!	31.1%	27.1%
Percentage of Adults Who Reported Consuming 5+ Fruits and Vegetables Each Day, 2011 & 2013 (Percentage of Adults) Percentage of adults who report consuming fruits and vegetables five or more times per day.	18.8%	(17.2% - 20.6%)	≈	18.1%	DNA
Percentage of Adolescents Who Ate Five or More Servings of Fruits and Vegetables Daily, 2013 (Percentage of Students) Percentage of high school students who ate five or more servings of fruits or vegetables per day	21.0%	(18.4% - 23.9%)	≈	22.5%	**
Obesity Among Adults, 2011-2013 (Percentage Who Were Obese) The adult obesity prevalence is reported as the percent of BRFSS respondents whose self-reported height and weight corresponds to a Body Mass Index (BMI) equal to or greater than 30.0.	23.5%	(22.1% - 25.0%)	✓	26.6%	26.9%
Obesity Among Adolescents, 2013 (Percentage Who Were Obese)	11.0%	(9.3% - 13.0%)	≈	12.8%	13.7%



New Mexico's Community Health Status Indicators

- 46 Health indicators, organized by topic area

