



Medical Cannabis Program Update FY22

Dominick V. Zurlo, Ph.D.
**Medical Cannabis Program
Director**

1190 S. St. Francis Drive • Santa Fe, NM 87505 • Phone: 505-827-2613 • Fax: 505-827-2530 • nmhealth.org

Before we start...

On behalf of all colleagues at the Department of Health, we humbly acknowledge we are on the unceded ancestral lands of the original peoples of the Apache, Navajo, and Pueblo past and present.

With gratitude we pay our respects to the land, the people, and the communities that have contributed to what today is known as the State of New Mexico.



PHOTO COURTESY: HSD Employee

New Mexico Department of Health

2

Mission

To ensure health equity, we work with our partners to promote health and well-being, and improve health outcomes for all people in New Mexico.

Goals



We expand equitable access to services for all New Mexicans



We ensure safety in New Mexico healthcare environments



We improve health status for all New Mexicans



We support each other by promoting an environment of mutual respect, trust, open communication, and needed resources for staff to serve New Mexicans and to grow and reach their professional goals

Cannabis in New Mexico

1978 – Lynn Pierson Therapeutic Research Act

2007 – Lynn and Erin Compassionate Use Act

2019 – Growing Hemp legalized

2019 – Legislation allowed for:

- Cannabis possession decriminalized (small amounts);
- Cannabis Consumption Areas
- Reciprocity

2021 – Cannabis Regulation Act establishes the framework for adult use cannabis



Photo courtesy of Elizabeth Bisio

State Agencies Working Together

Adult Use

Regulation and Licensing Department

- Licenses cannabis establishments such as:
 - Cultivation
 - Manufacturing
 - Testing
 - Couriers
 - Dispensaries
- Regulate cannabis sales
- Cannabis Regulatory Advisory Committee



Medical

Department of Health

- Administer the Medical Patient Registry
 - Patients
 - Caregivers
 - Reciprocal
- Medical Cannabis Medical Advisory Board
- Public Health and Safety Advisory Committee

Hemp

Environment Department

- Issues permits for:
 - Hemp warehouses
 - Extraction facilities
 - Manufacturing facilities
 - Processing facilities

Department of Agriculture

- Licenses hemp cultivation



Other Agencies involved include:

Department of Public Safety; Workforce Solutions; Department of Transportation



Investing for tomorrow, delivering today.

1190 S. St. Francis Drive • Santa Fe, NM 87505 • Phone: 505-827-2613 • Fax: 505-827-2530 • nmhealth.org



Lynn and Erin Compassionate Use Act

The purpose of the Lynn and Erin Compassionate Use Act is to allow the **beneficial use** of medical cannabis in a **regulated system** for **alleviating symptoms** caused by debilitating medical conditions and their medical treatments.



Potential Therapeutic Effects/Benefits

THC

(delta-9-tetrahydrocannabinol)

- Appetite stimulant
- Decreased intraocular pressure
- Analgesic/neuropathic pain
- Antispasmodic
- Antiemetic



Photo courtesy of Elizabeth Bisio

Types of Products

- Smoking - pipe/rolled
- Vaporized – oil or wax (dabbing)
- Edibles - baked/candies
- Sublingual – drops under the tongue
- Topicals - lotions, salves, ointments
- Suppositories



Purpose of the Medical Cannabis Program (MCP)

- Approve and issue patient registry cards to **qualified patients** and their **primary caregivers**
- Convene the Medical Cannabis Advisory Board
- Convene the Public Health and Safety Advisory Committee

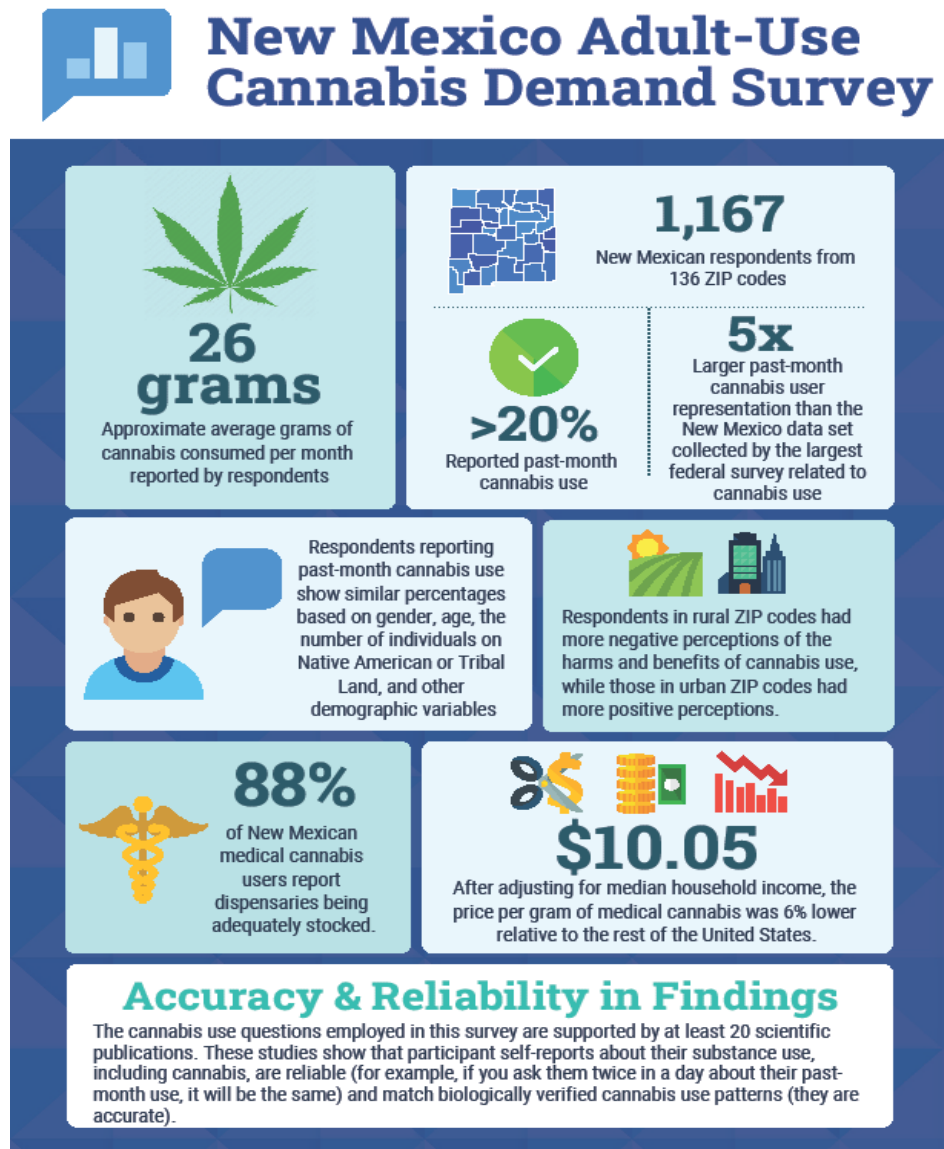


What Enrollment Provides

- Legal protection to possess an adequate supply (8-12 ounces)
- The right to have items used for consumption of medical cannabis
- The ability to purchase from licensed dispensaries prior to the start of adult use with their patient ID card



In the spring of 2021, a survey was conducted in New Mexico to determine cannabis demand and cannabis use.



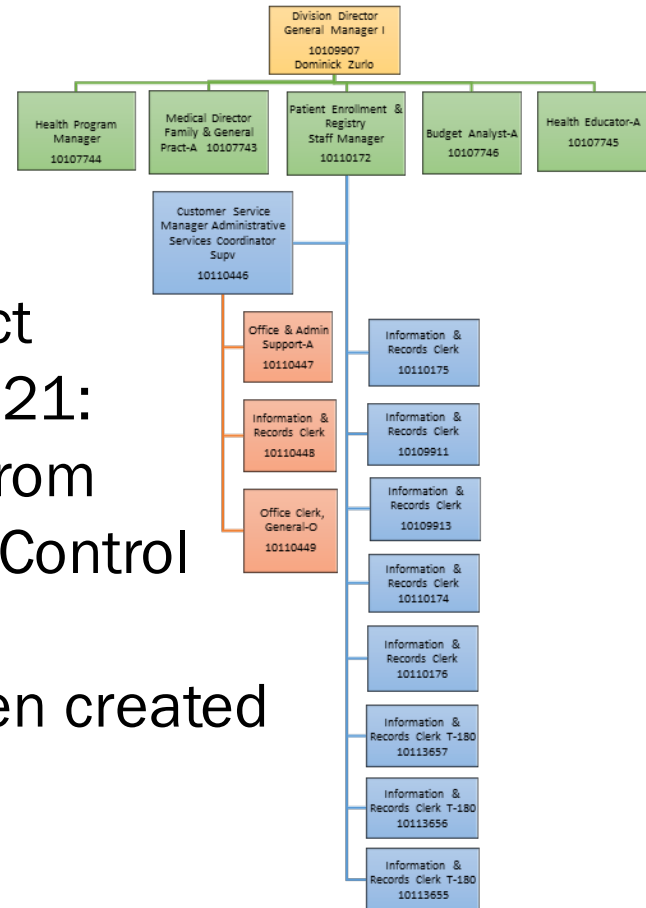
Organizational Chart Medical Cannabis Program

FY21 – 28 FTE positions

FY22 – 18 FTE positions

When the Cannabis Regulation Act was implemented on June 29, 2021:

- 13 positions were transferred from NMDOH-MCP to RLD-Cannabis Control Division
- 3 New T-180 positions were then created for NMDOH-MCP

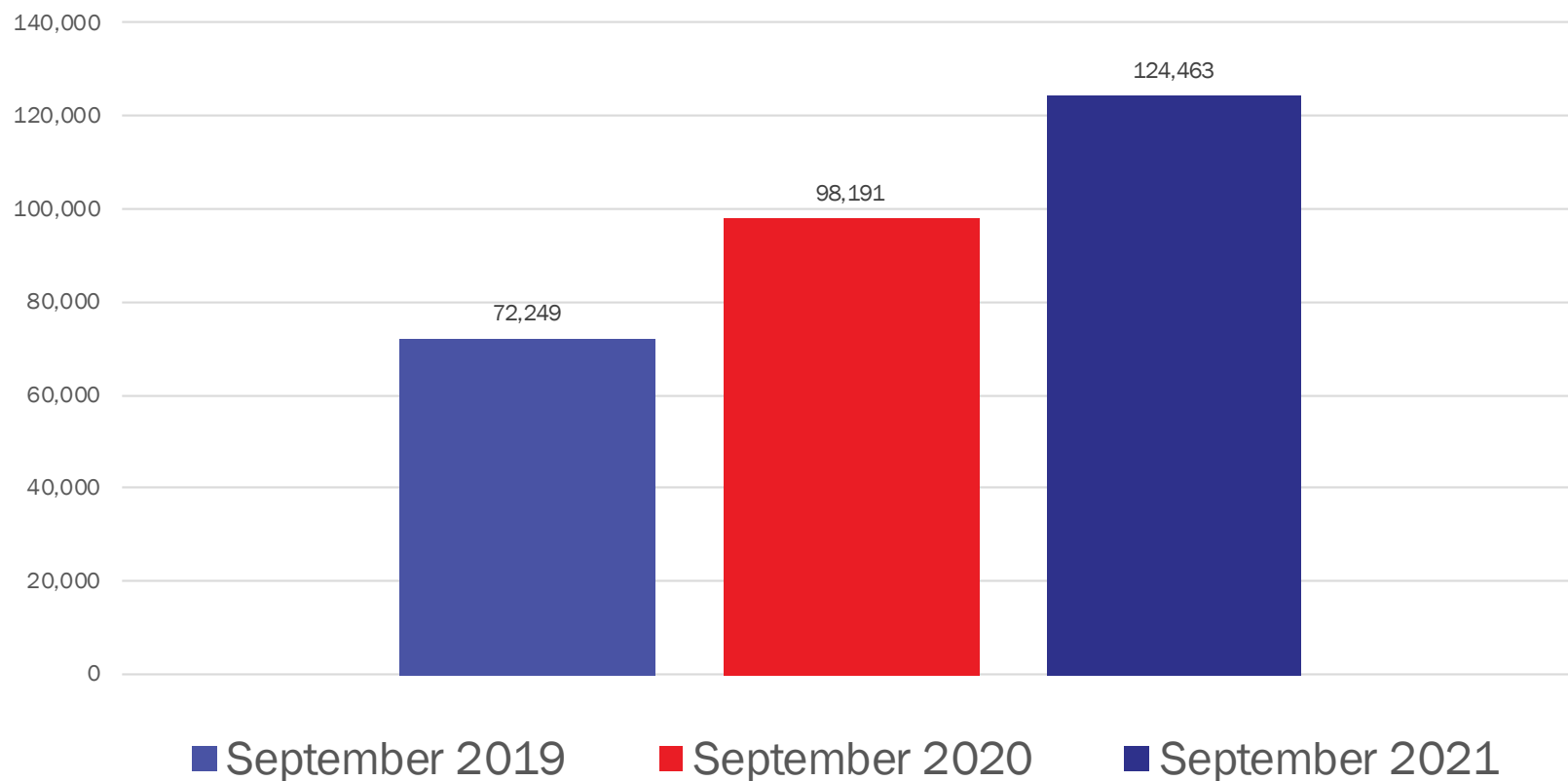


Medical Cannabis Program Budget



- The Medical Cannabis Program has been funded through licensing fees.
- As of June 29, 2021, the funding is through the Regulation and Licensing Department – Cannabis Control Division and their collection of licensing fees through the Cannabis Regulation Act

Patient Enrollment 2019-2021



72% increase in patient enrollment from 2019 to 2021

There are Medical Cannabis Patients in Every County in NM

124,463 enrolled patients as of September 30, 2021

14,967 applications processed from July 1, 2021 to September 30, 2021



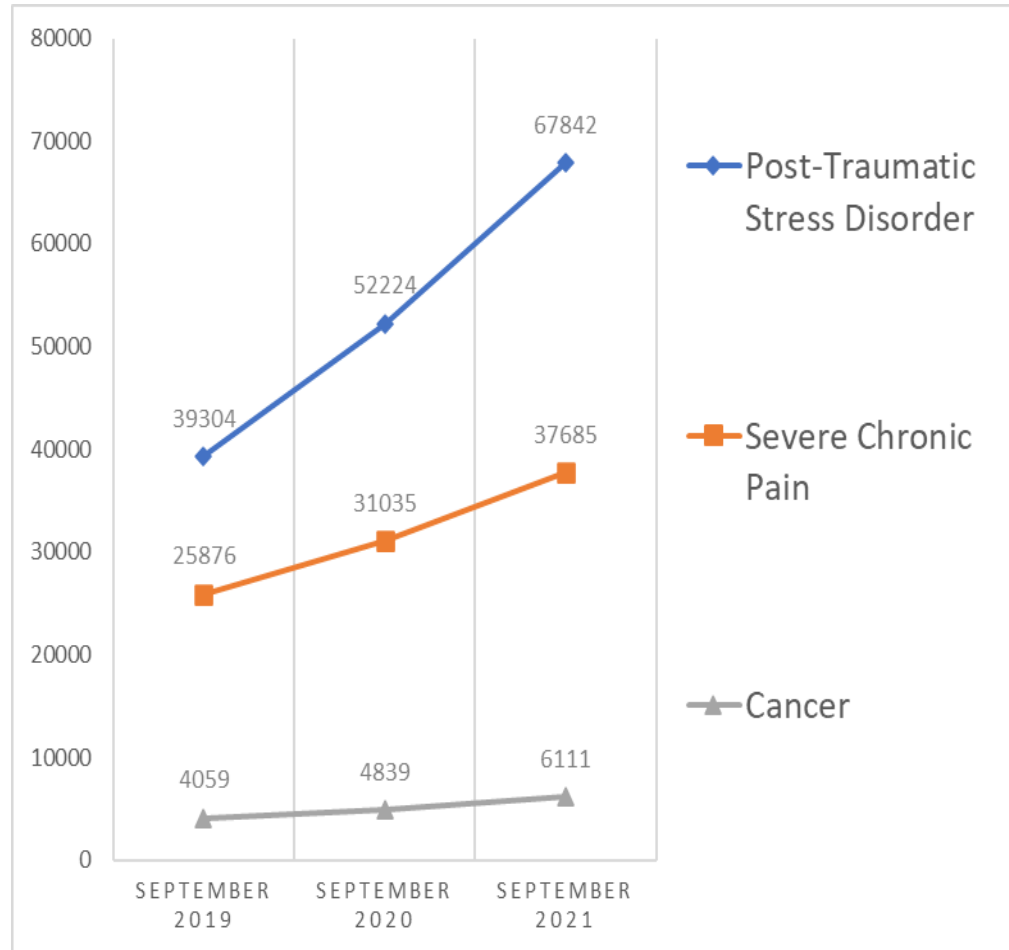
Investing for tomorrow, delivering today.

1190 S. St. Francis Drive • Santa Fe, NM 87505 • Phone: 505-827-2613 • Fax: 505-827-2530 • nmhealth.org



The Three Most Commonly Enrolled Qualifying Conditions 2019-2021

- 28 qualifying conditions
- 111,628 patients are enrolled with one of these three qualifying conditions.
- 12,825 patients are enrolled with one of the other 25 qualifying conditions

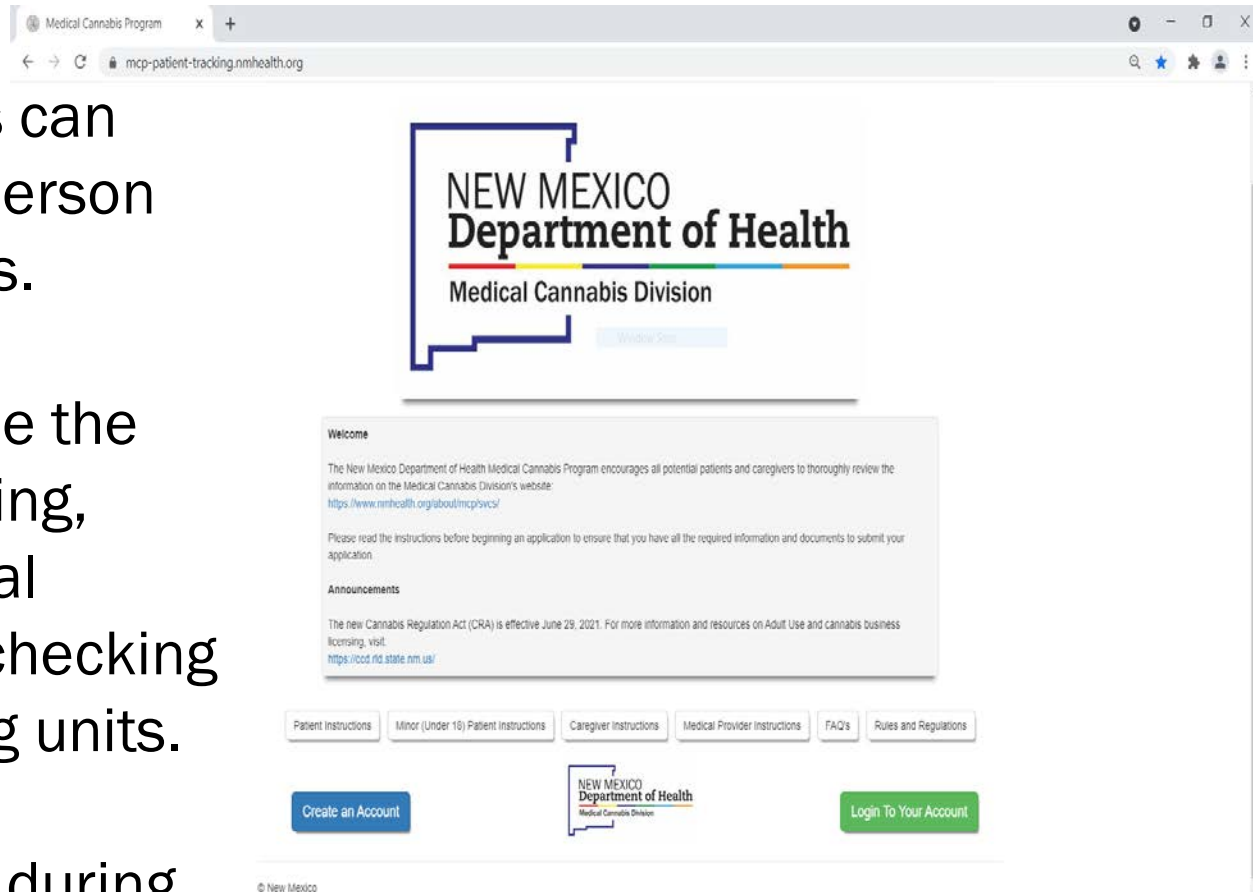


Online Patient Portal

Medical Providers can utilize this for in-person or telehealth visits.

Patients can utilize the portal for registering, completing, annual certifications, or checking on their remaining units.

An important tool during COVID-19.



Online Patient Application

Patient Application

5P44WPS2S3

Application Type At least one option should be filled

☐ New Application ☐ Re-Certification

Contact Information

First Name Last Name

Suffix Middle Name

Date of Birth MM-DD-YYYY

Phone () - - Email

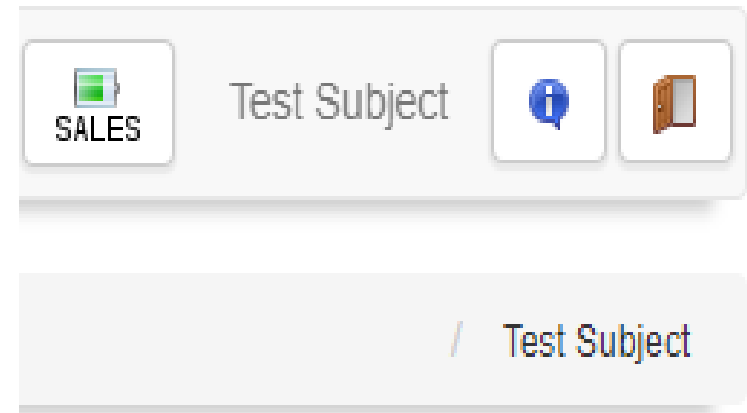
Upload Drivers License or State Issued Identification

Mailing Address

Address

How many people are using the Patient Portal?

- Patients can check to see how many units they have purchased by clicking on the “Green battery” labelled Sales.
- Medical Providers: 36
- Patients registered online: 2,235



Medical Cannabis Program 24/7 Response

- ❑ Operates a 24-hour/7-day-a-week First Responder Response Line to assist Law Enforcement Officers regarding Medical Cannabis questions.
- ❑ In April 2020 a Covid-19 option for First Responders was added to the previously existing 24-hour MCP Law Enforcement response line.
- ❑ First Responders (EMS, Fire, Law Enforcement) were able to call for updated information on Covid-19 and for testing information and results.
- ❑ There were over 6,000 calls, responses, and events through this line related to Covid-19.



5 2 7 2 0 5 9 2 6 3 7 8 9 6 7 0

For Law Enforcement: The cardholder is enrolled in the New Mexico Medical Cannabis Program (as per NMS §26-2B-1 - 7). For questions about possession limits or other regulatory matters, Law Enforcement members may call the 24-hour Law Enforcement Line:

505-231-6740

(For use by members of Law Enforcement ONLY)

For Patients: For questions during regular business hours (Mon-Fri - 8:00am - 5:00pm), call:

505-827-2321

Questions



Photo courtesy of Elizabeth Bisio

Contact Information

Dominick V. Zurlo, Ph.D.

New Mexico Department of Health

Medical Cannabis Program Director

Dominick.Zurlo@state.nm.us

505-827-2321



Investing for tomorrow, delivering today.

1190 S. St. Francis Drive • Santa Fe, NM 87505 • Phone: 505-827-2613 • Fax: 505-827-2530 • nmhealth.org

