



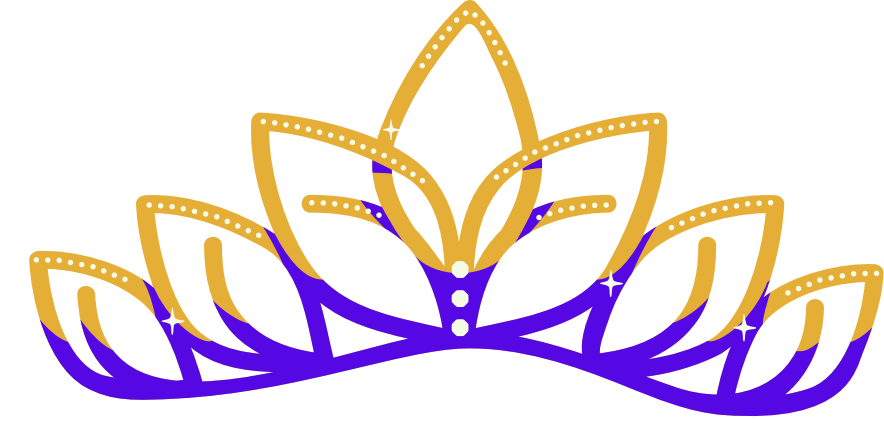
Trauma Responsive Public Policy Approaches

What
works?

Lilly B. Irvin-Vitela, MCRP
Peralta, NM

11/1/22, Interim Health and Human Services Committee

Bio-Sketch



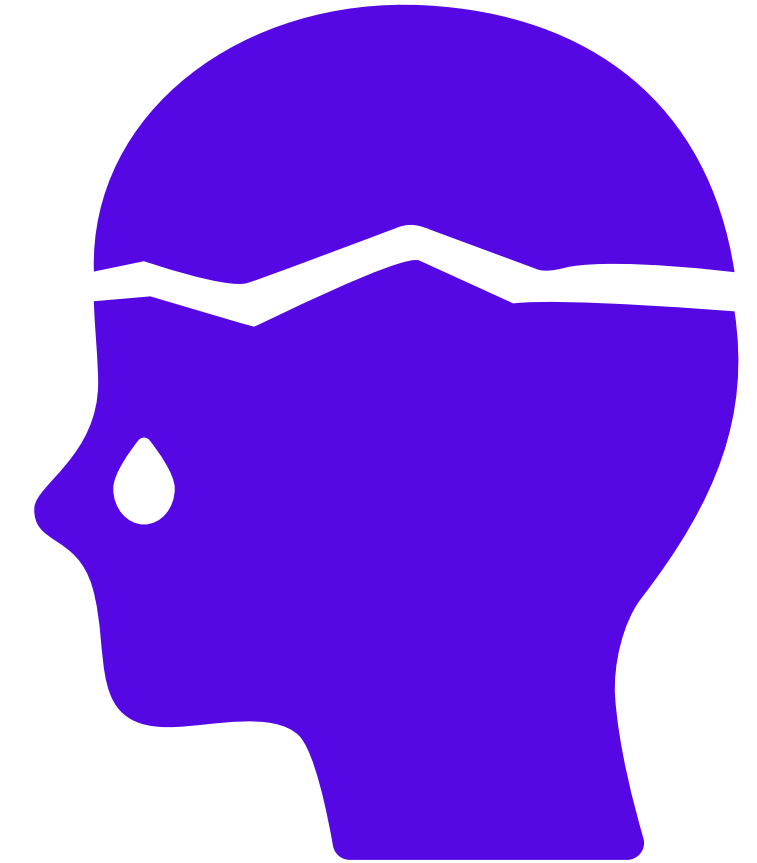
- Ms. America Version

- Class Officer and honor roll student, Valley High School
- Captain of High School Debate Team, made it to state in oratory and debate + placed at in and out-o - state competitions in domestic and foreign extemporaneous speaking
- UNM Alumni, Presidential Scholar + multiple other scholarships, graduated with departmental honors in political science and general honors, Who's Who
- Former President and Secretary of UNM Honors Advisory Council
- Returned to my HS to coach novice debate
- Co-Chair UNM NOW
- Held jobs in high school and college
- Married at 23 to loving husband and still married 27 years later, two brilliant and beautiful adult children
- Strong relationships with extended family
- Many deep and meaningful friendships
- Non-profit executive at 25
- Running multi-million-dollar organizations/initiatives in 30s
- Successfully led large and small teams
- Making significant systems and policy change throughout career in community-centered ways
- Supported by incredible mentors across the lifespan
- Most of career has been a calling

Bio-Sketch

- Nitty Gritty

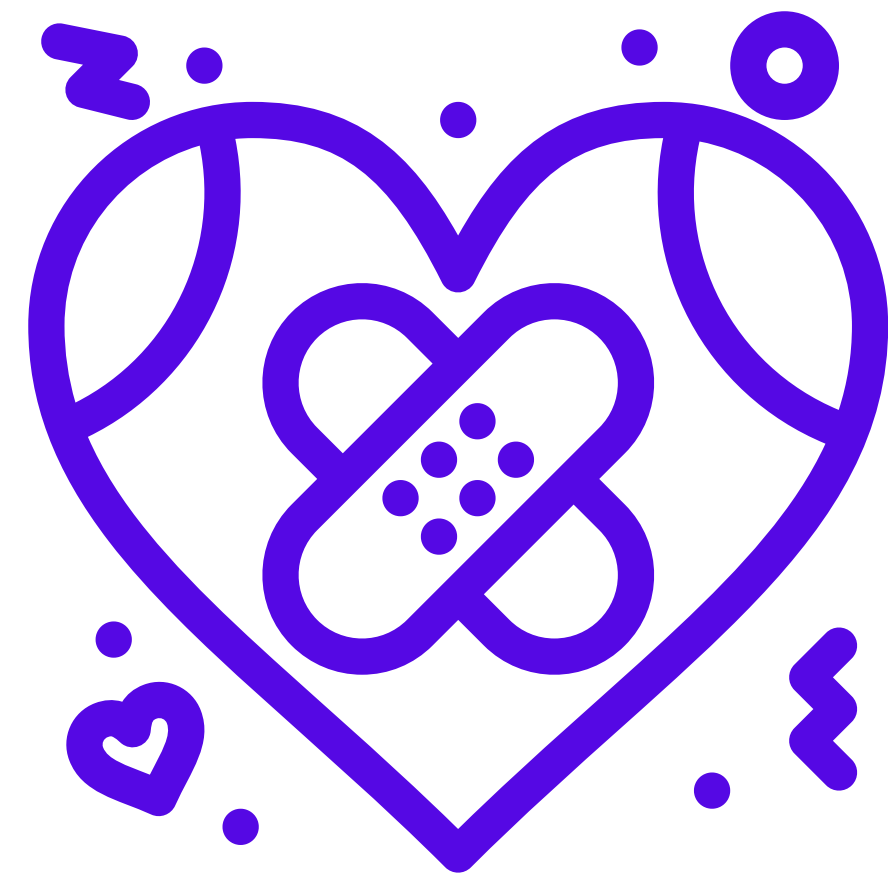
- Multiple moves during childhood
- Food, housing, health care, and transportation insecurity
- Lack of basic safety
- Almost abducted several times
- Parentified child- managing own and family well-being
- Suicidal ideation and attempts starting in elementary school
- Eating disorder middle- through high school
- High risk relationships as an adolescent, unintended pregnancies, lost pregnancies/still birth
- First in family to disclose generational abuse/trauma
- High ACEs score
- Depression
- Lifetime challenges sleeping peacefully
- Hyper-vigilant
- Legacy of mental health challenges but greater capacity to seek and secure supports
- Worked 80-90 hours a week for over 2/3 of career
- Significant work/expense to manage mental injury
- Low tolerance for misuses of power and injustice



Bio-Sketch

- Real Deal

- Participatory Researcher
- Restorative justice trainer and practitioner
- Train-the-trainer for Child Abuse and Neglect Mandated Reporters
- Train-the-trainer for Darkness to Light Sexual Abuse Prevention Training
- Train-the-Trainer for Trauma Informed Early Care and Education Practices
- Infant and Early Childhood Mental Health Trainer and Curriculum Developer and Implementation Coach
- Train-the-Trainer for Strengthening Families and Implementation Coach
- Trainer in Developmental Screening, Assessment and Inclusive Practices
- Trainer and Coach in Family Engagement
- Cultural Competence/Diversity Equity and Inclusion Trainer and Coach
- ACES and Resilience Trainer
- Reflective Practice Coach
- Democracy advocate, organizer, and poli-sci and philosophy nerd



Trauma Informed Public Policy

Decision-making Framework Key Ingredients

- Evidence-based
 - Public Health Approach
 - Adversity and Resilience Addressed
 - Two-generation
 - Interdisciplinary and cross-sector
- Culturally informed
 - Center community knowledge
 - Effectiveness with priority populations
 - Equity principles and tools
- Consistently applied
 - All policy directed at responding to the needs of children and families
 - + individuals demonstrating symptoms of adverse childhood experiences, trauma, or toxic stress
- Public and Private Partnerships
- Non-partisan



Trauma Informed Public Policy Decision-making Strategies

- ACE Policy Review- Washington State (2011)
 - Early learning coalitions, community public health and safety networks, organizations that work to prevent and address child abuse and neglect, tribes, representatives of public agency agencies involved with interventions in or prevention of adverse childhood experiences, philanthropic organizations, and organizations focused on community mobilization
- In 2020 more than 35 states introduced legislation to address Adverse Childhood Experiences, many focused on workforce training and professional development
- Indiana established a behavioral health commission to assess mental health issues, including childhood trauma, suicide, and ACEs
- Hawaii, West Virginia, and Washington established task forces to evaluate students using an ACEs assessment protocol

Trauma Informed Public Policy

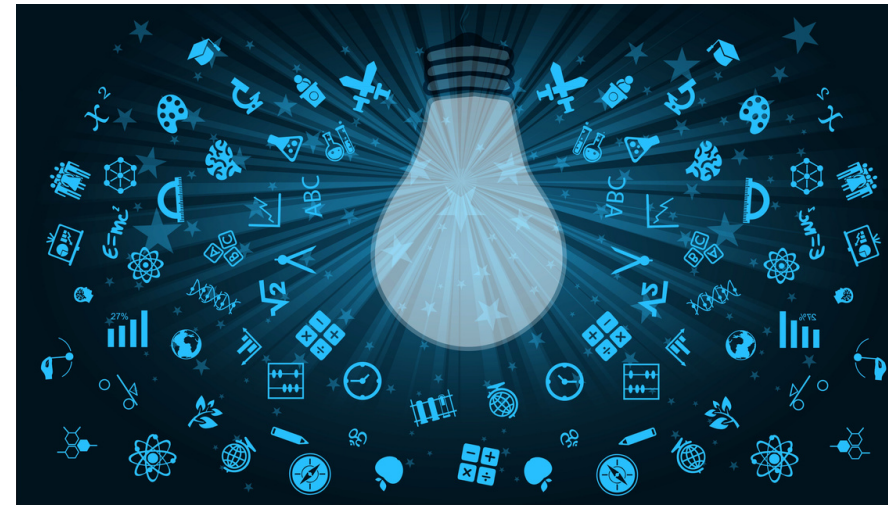
Purchasing Standards and Grant Assurances



- A Statewide Private Non-profit Early Childhood and Family Support Organization, Supporting Families Together Association
 - Contracting for outcomes
 - Paying for performance
 - Funding professional development and technical assistance
 - Consistent and reliable use of data to drive-quality outcomes for children, families, and early childhood providers
- State **MIECHV** Home Visiting
 - Contracting for outcomes
 - Paying for performance
 - Funding professional development and technical assistance
 - Consistent and reliable use of data to drive-quality outcomes for children, families, and early childhood providers

Trauma Informed Public Policy

Access to Meaningful Professional Development



- Invest in high-quality professional/workforce development across fields and sectors
- Project Echo- ACES Professional Development
- People Centered Screening and Assessment
 - <https://uwm.edu/wcwpds/peoplecenteredassessment/>
- Incentivize screening, assessment, and intervention for trauma
 - California- ACEs Aware – Take action. Save lives. www.acesaware.org/about/



Rationale for Trauma-Informed Public Policy

- Pre Covid the US was spending \$401B in lifetime costs of non-fatal child maltreatment, experts anticipate the needs and costs have grown exponentially
- Reductions in child maltreatment are associated with trauma-informed approaches.
- Improved child and adult health. According to the Centers for Disease Control and Prevention, preventing ACEs could reduce half of the top 10 leading causes of death and decrease adult depression by as much as 44%.
- Trauma-informed approaches reduce engagement in the criminal legal system.
- Trauma-informed approaches break or disrupt damaging generational cycles.

Resources for Decision-Makers

- Preventing Child Abuse and Neglect: A Technical Package for Policy, Norm, and Programmatic Activities (cdc.gov)

<https://www.cdc.gov/violenceprevention/pdf/can-prevention-technical-package.pdf>

- 1965-S2.PL.pdf (wa.gov)

- Translating the Adverse Childhood Experiences (ACE) Study into Public Policy: Progress and Possibility in Washington State-

Kagi R, Regala D. Translating the Adverse Childhood Experiences (ACE) Study into public policy: progress and possibility in Washington State. J Prev Interv Community. 2012;40(4):271-7. doi: 10.1080/10852352.2012.707442. PMID: 22970780.

- cssp.org/our-work/project/strengthening-families/

Contact

Lilly B. Irvin-Vitela, MCRP

lilly@communityconnectsconsulting.com

[linkedin.com/in/lillyirvinvitela](https://www.linkedin.com/in/lillyirvinvitela)