



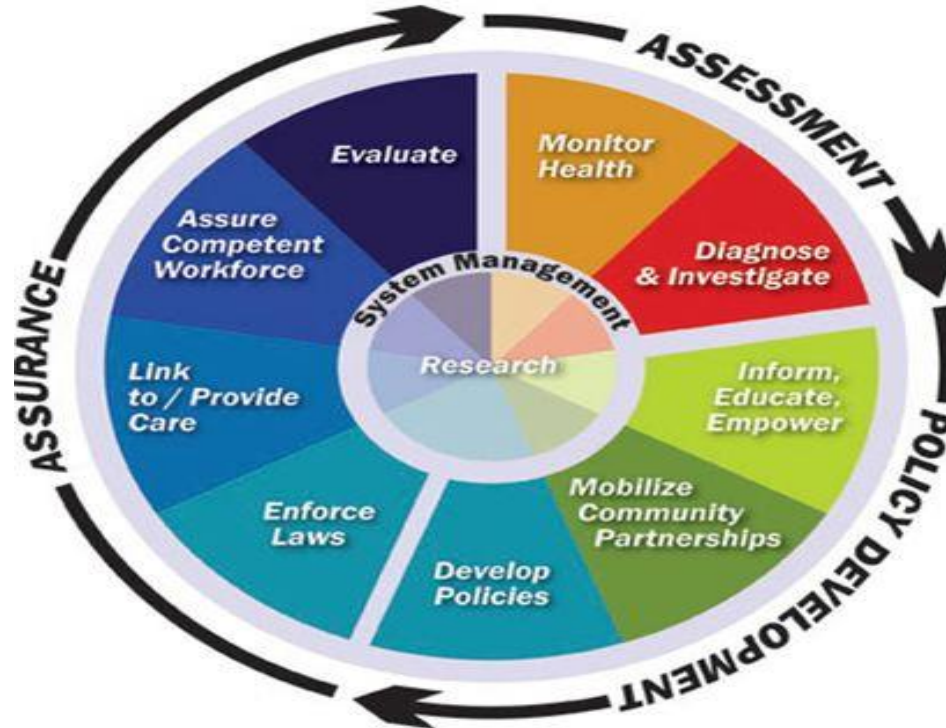
A Future School of Public Health

TRACIE C. COLLINS, MD, MPH, MHCDS
DEAN, COLLEGE OF POPULATION HEALTH

Updates & Progress

GOAL: To transition from the College of Population Health to an accredited School of Public Health
– we are not starting a new school!

10 Essential Functions of Public Health



Monitor health



Diagnose and investigate



Inform, educate and empower



Mobilize community partnerships



Develop policies



Enforce laws



Link to and provide care



Assure a competent workforce



Evaluate



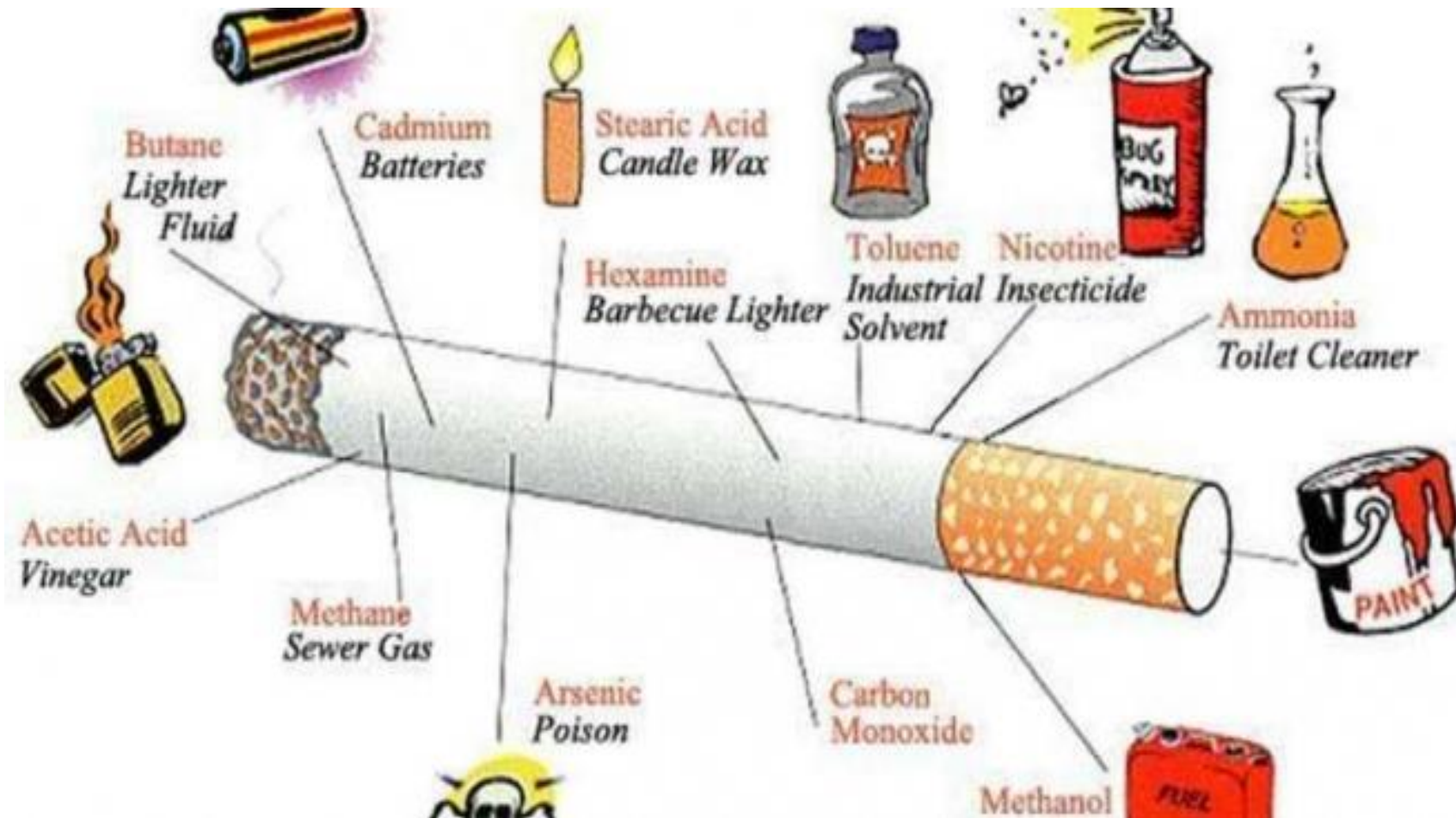
Research





To Prevent Influenza!

Do not take any person's breath.
Keep the mouth and teeth clean.
Avoid those that cough and sneeze.
Don't visit poorly ventilated places.
Keep warm, get fresh air and sun-
shine.
Don't use common drinking cups,
towels, etc.
Cover your mouth when you cough
and sneeze.
Avoid Worry, Fear and Fatigue.
Stay at home if you have a cold.
Walk to your work or office.
In sick rooms wear a gauze mask
like in illustration.



Risks from Smoking

Smoking can damage every part of the body

Cancers

Head or Neck

Lung

Leukemia

Stomach

Kidney

Pancreas

Colon

Bladder

Cervix

Chronic Diseases

Stroke

Blindness

Gum infection

Aortic rupture

Heart disease

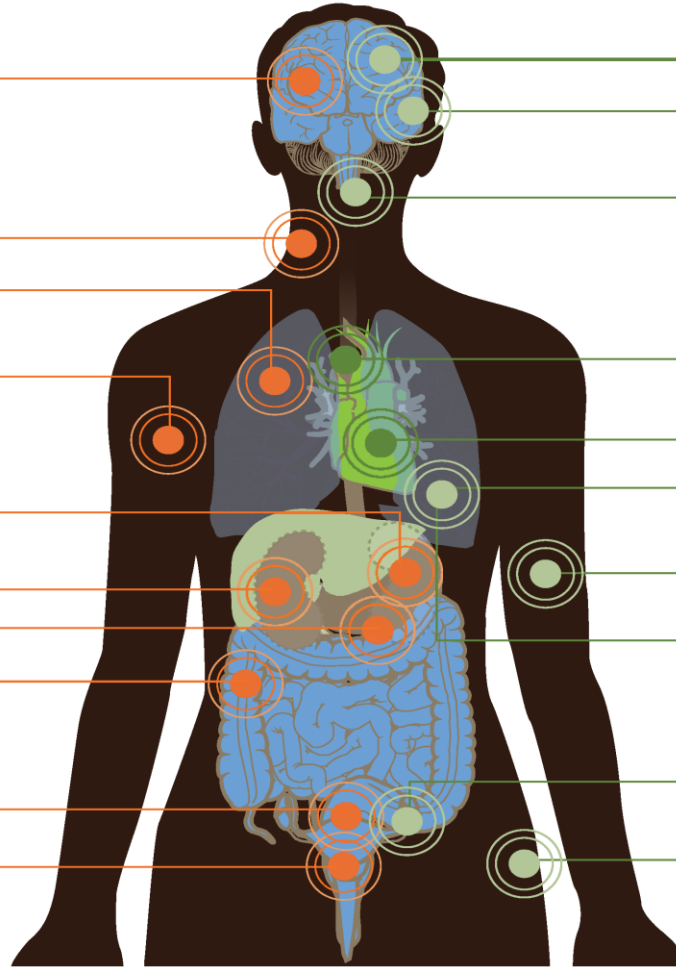
Pneumonia

Hardening of the arteries

Chronic lung disease
& asthma

Reduced fertility

Hip fracture



UNM's SPH Six Deliverables to Impact Public Health in NM in Two Years

- ❖ **Deliverable #1:** Increase the number of students
- ❖ **Deliverable #2:** Increase the number of faculty
- ❖ **Deliverable #3:** Increase non-state research dollars
- ❖ **Deliverable #4:** Create a Public Health Education Network Statewide
- ❖ **Deliverable #5:** Expand Statewide Community Health Assessments
- ❖ **Deliverable #6:** Lead two major public health intervention initiatives

Deliverable #1 : Increase the number of students

- ❖ Maternal Child Health (MCH) minor – Undergraduate level
- ❖ Proposed Maternal Child Health (MCH) minor and certificate – Graduate level
- ❖ Collaborations with Anderson School of Management, Psychology and Public Administration

Enrollment by Academic Year

AY	BSPH	MPH	PhD	Total	
2018-2019	64	44		108	
2019-2020	122	53		175	
2020 - 2021	134	56		190	
2021 - 2022	143	65		208	
2022-2023	122	56	5	183	projected
2023-2024	138	66	15	219	projected
2024-2025	187	81	25	293	projected
2025-2026	252	90	35	377	projected

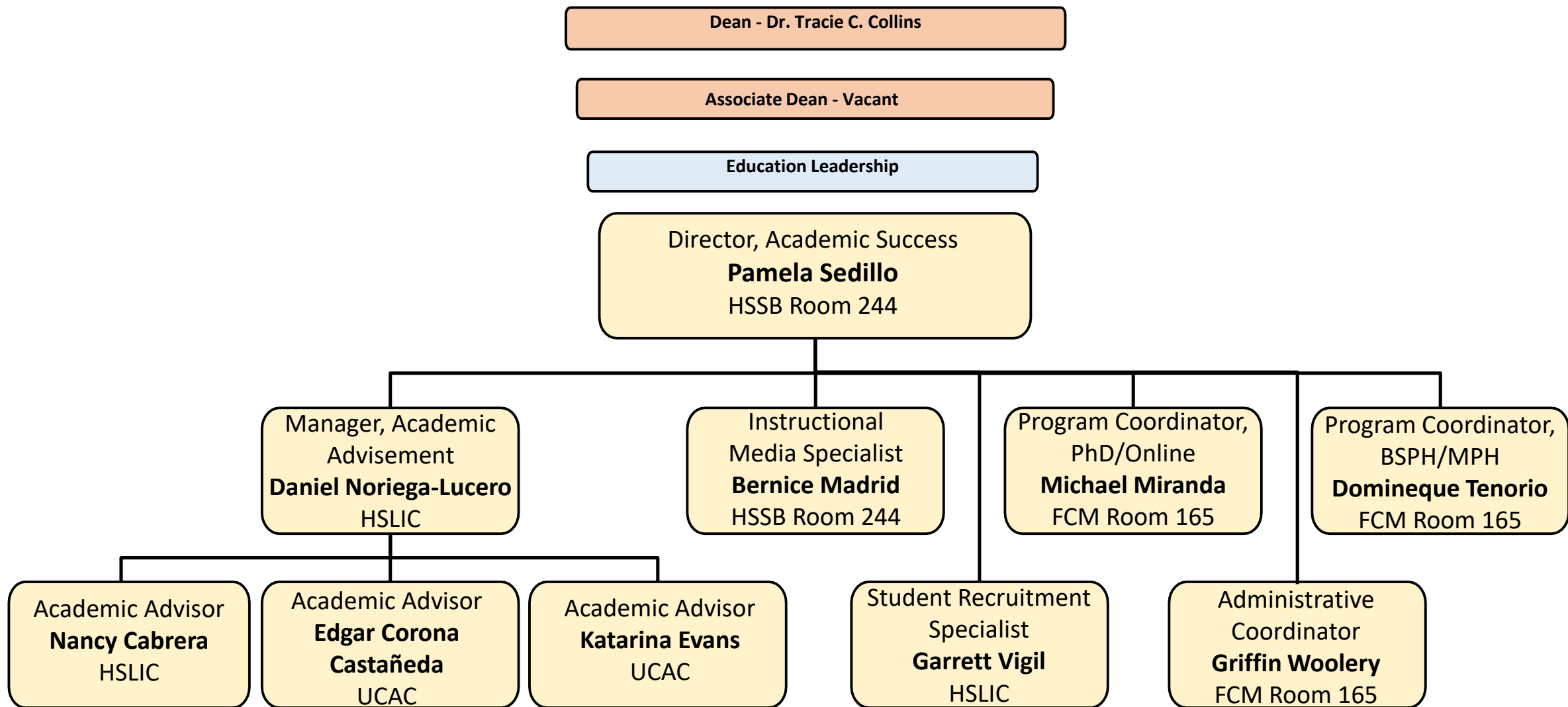
PhD in Health Equity Sciences

A cooperative doctoral degree



BE BOLD. Shape the Future.®
**College of Health, Education
and Social Transformation**

Recruitment Efforts



New Development Officer and Marketing/Communication Manager



Melody Wells
Development Officer



Cindi Meche
Marketing Manager

Deliverable #2: Increase the number of faculty

Deliverable #3: Increase non-state research dollars

Completed Zoom/Campus Interviews

	Field	Career Level	NIH Funding Now	Zoom/Campus Interview
1.	Global Health	Early	Yes	Z/C
3.	Community Health - Anthropologist	Early	No	Z/C
4.	Health & Labor Policy	Early (Lecturer)	No	Z/C
5.	Epi	Post-Doc	On T-38; writing grants	Z/C
6.	Community Health (CBPR)	Senior/Native Scholar	Yes	Z/C
7.	Community Health	Post Doc	T-38; writing grants now	Z/C
8.	Maternal and Child Health (CBPR)	Early	Yes	Z/C
9.	Community Health/Quantitative Methods	Post Doc	T-38; writing grants now	Z/C
10.	Epi and Nutrition and Global Health	Senior	Fully funded until 2025	Z/C
11.	Environmental Eng	Early to Mid		Z/C
12.	Community Health/Distance Learning	Early	3 small grants; no PI	Z/pending
13.	Sociologist; Community Health	Early		Z/pending
14.	Biostat	Senior	On grants	Z/pending
15.	Health Behavior	Senior	Yes	Z/pending
16.	Health Policy J.D., Ph.D.	Senior		Z/pending
17.	Comm Health	Senior	yes	Z/pending
18.	Ph.D. Nutrition	Early	No	Z/pending
19.	Ph.D. Health Policy and Economics	Post-Doc	Developing R-01 at UCLA	Z/pending
20.	Ph.D. Nutritional Epi	Mid	Small foundation grants; at R-2	Z/pending
21.	Ph.D. Epi; Post doc in Cardiovascular Epi	Early	Writing grants in Spain as part of Euro joint program	Z/pending
22.	Ph.D. Economics	Mid/Lecturer/Researcher in past	No	Z/pending
23.	Ph.D. Health Behavior Science	Mid	No	Z
24.	Ph.D. Comm Psych; Post doc Johns Hopkins	Senior	No	Z/pending
25.	Ph.D. Information Science	Senior	Yes	Z/pending
26.	Ph.D. in Nursing	Mid		Z
27.	Ph.D. Anthro; UNM	Earlyish	24 pubs; Has K grant, planning R-01	Z/pending

Impacting Public Health

Deliverable #4: Create a Public Health Education Network Statewide

- ❖ **Provide access to the School of Public Health faculty to support programs and students at other institutions**
 - ❖ Collaborating with Health Sciences Interprofessional Education (IPE) Program to broaden the IPE Honors program to expand across the state.
 - ❖ Collaborating with 2-year institutions to create degree/career pathways for students from their local institution to UNM and then to their desired career.
 - ❖ Planning a Public Health Certificate that is available to individuals statewide.

Deliverable #5: Expand Statewide Community Health Assessments

- ☐ Working with DOH to align efforts statewide (NM Alliance of Health Councils, hospitals, FQHCs)
 - ☐ Understanding timelines for each entity
 - ☐ Determining gaps in CHAs
 - ☐ Improving the quality of CHAs
 - ☐ Aligning outcomes
 - ☐ Creating a statewide health improvement plan

UNM's SPH Six Deliverables to Impact Public Health in NM in Two Years

- ❖ **Deliverable #6: Lead two major public health intervention initiatives**
 - ❖ **Substance Use Prevention**
 - ❖ **Diabetes Prevention Program**

Cross Collaboration

Collaboration between the College of Population Health (CoPH) and the ECHO Institute's Adverse Childhood Experiences (ACEs) ECHO program

Joanna G. Katzman, MD, MSPH Medical Director Laura Tomedi, PhD, MPH, Research Director

Goal: The partnership between the UNM College of Population Health and the ECHO Institute will expand the reach of the Adverse Childhood Experience's (ACEs) ECHO program by partnering with additional rural elementary schools that serve younger children. This will educate teachers and providers working in school-based health centers (SBHCs) who work with youth in lower grade levels to help them identify young children at risk for substance use as early as possible.

Becoming an Accredited School

Council on Education for Public Health (CEPH)



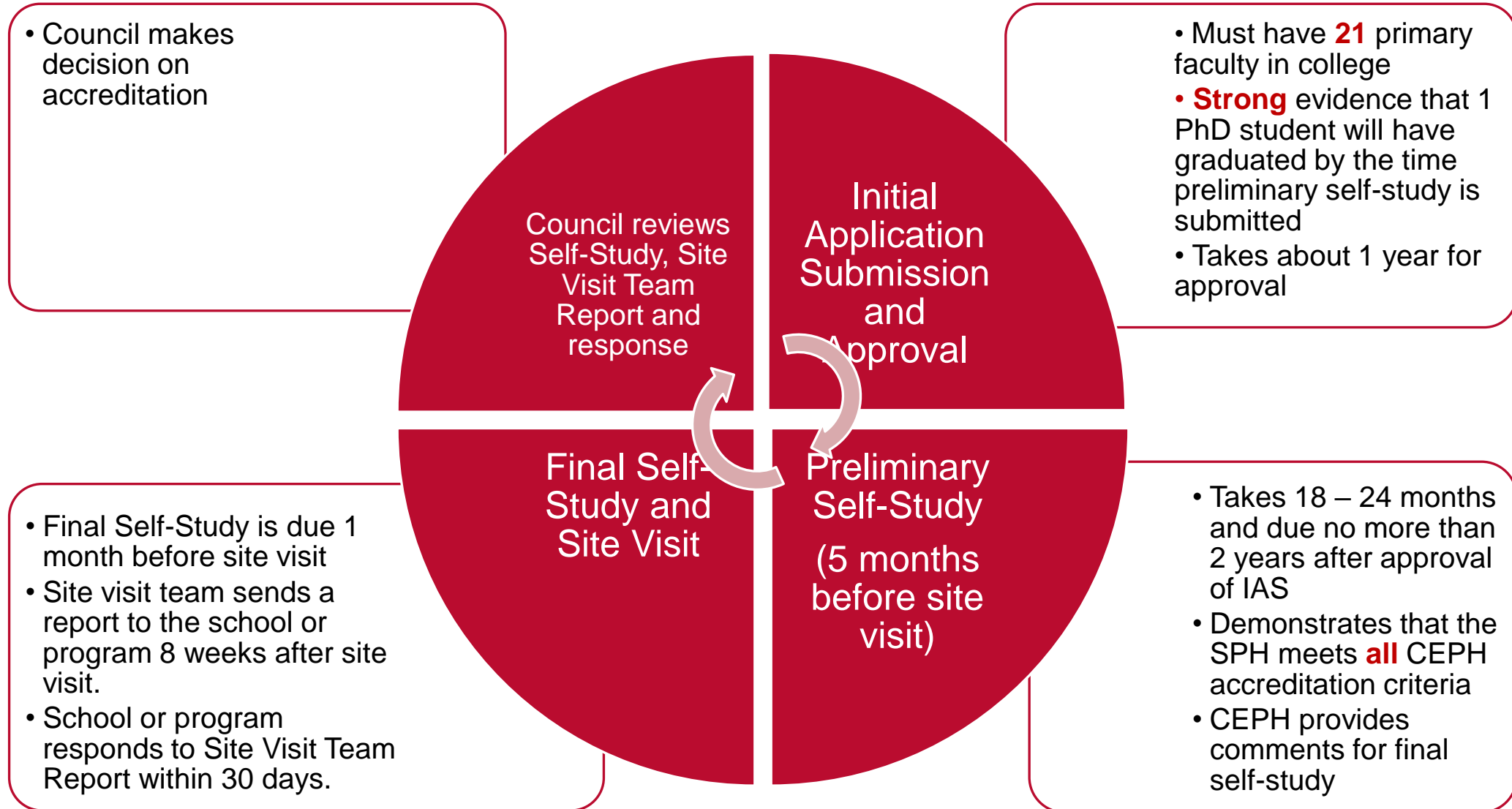
- Accredits bachelor's, master's and doctoral programs
- Recognized by the US Department of Education to accredit **schools** and **programs** of public health
- Student benefits:
 - Access to internships and fellowships and other resources only available to accredited schools/programs
 - Quality educational experience

Our History of Accreditation



- 26 years as an CEPH accredited public health program!
- MPH enrolled its first cohort of students in 1994
- First MPH students graduated in 1996
- Last accredited in 2017 for 7 years
- Adding the Bachelor of Science in Population Health to our accreditation unit (program of public health)

What Do We Need to Do?





THANK YOU!

Many thanks to our state leaders for \$10 million to spend over the next two years to grow the College of Population Health!!

Questions?

We have conducted an initial space study on the building and have requested \$50 million through a specials appropriation.