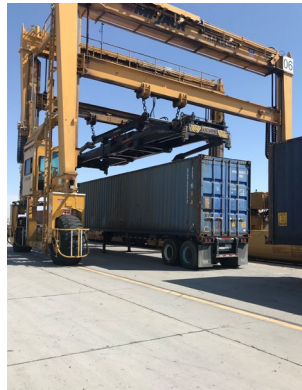




NMFA Oversight Committee Presentation

Marco Grajeda
Executive Director
New Mexico Border Authority
August 29, 2022



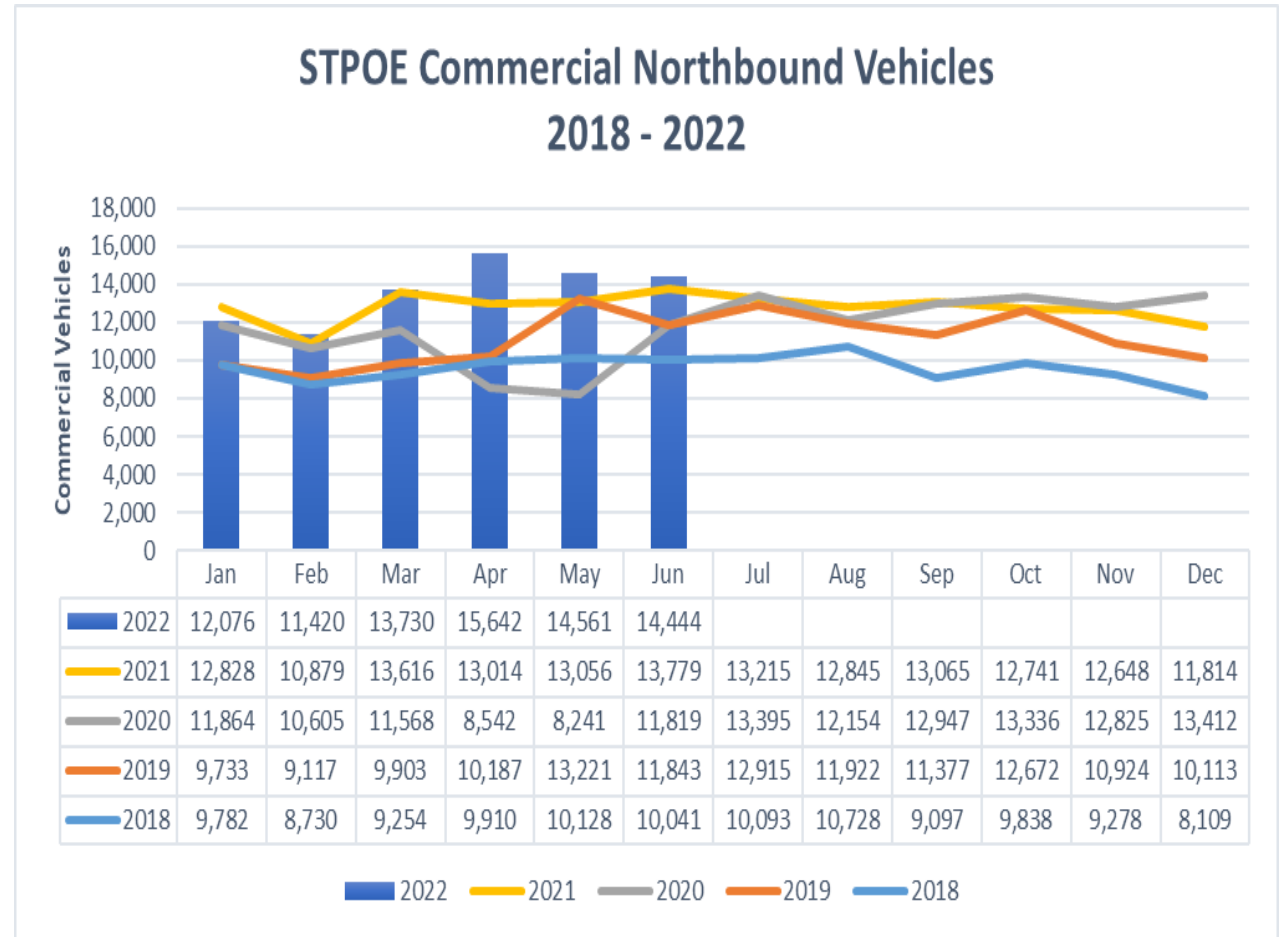
NMBA major accomplishments since FY 2019

- i. The NMBA team advanced and secured full funding for new projects, and key infrastructure priorities previously stalled, with an investment in the region totaling around \$67 million.
- ii. Secured capital for two projects that will boost agency enterprise funding, while improving the image of the Santa Teresa border region.
- iii. Increased agency revenue by 72% in three years by taking full advantage of agency properties and regularly renegotiating lease agreements.
- iv. Expanded agency partnerships and support at the local, regional, state and federal level, as well as expanded collaboration with Mexican officials.

Border Statistics

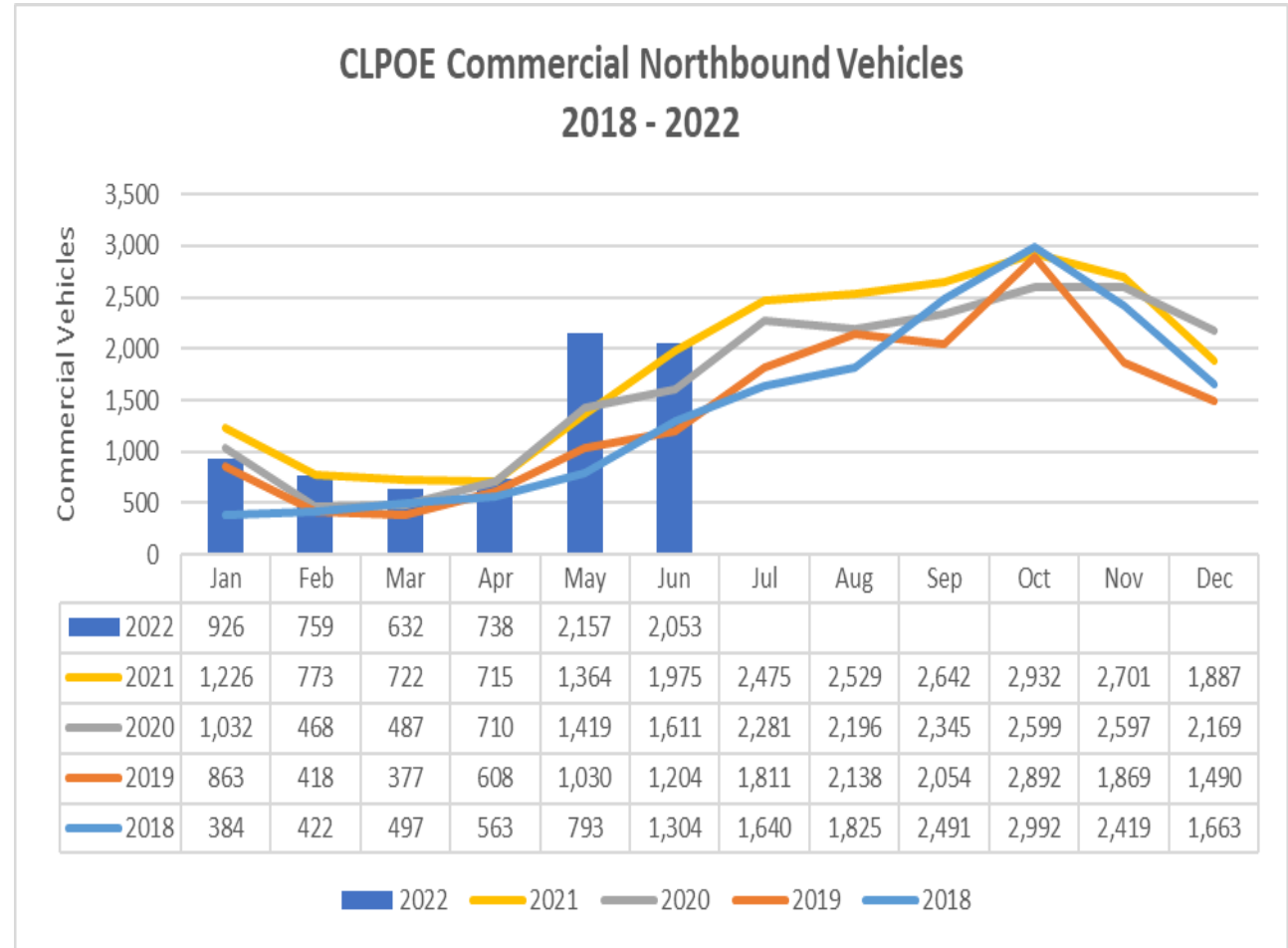
Santa Teresa Commercial Vehicle Update

- STPOE expects to top last fiscal year's number of processed commercial vehicles.
- Currently processing 663 trucks/ day vs 350 in 2019.
- STPOE served a critical function in April when Texas Gov. Greg Abbott implemented enhanced port screenings.
- Current average wait times:
 - 0 to 40 minutes.



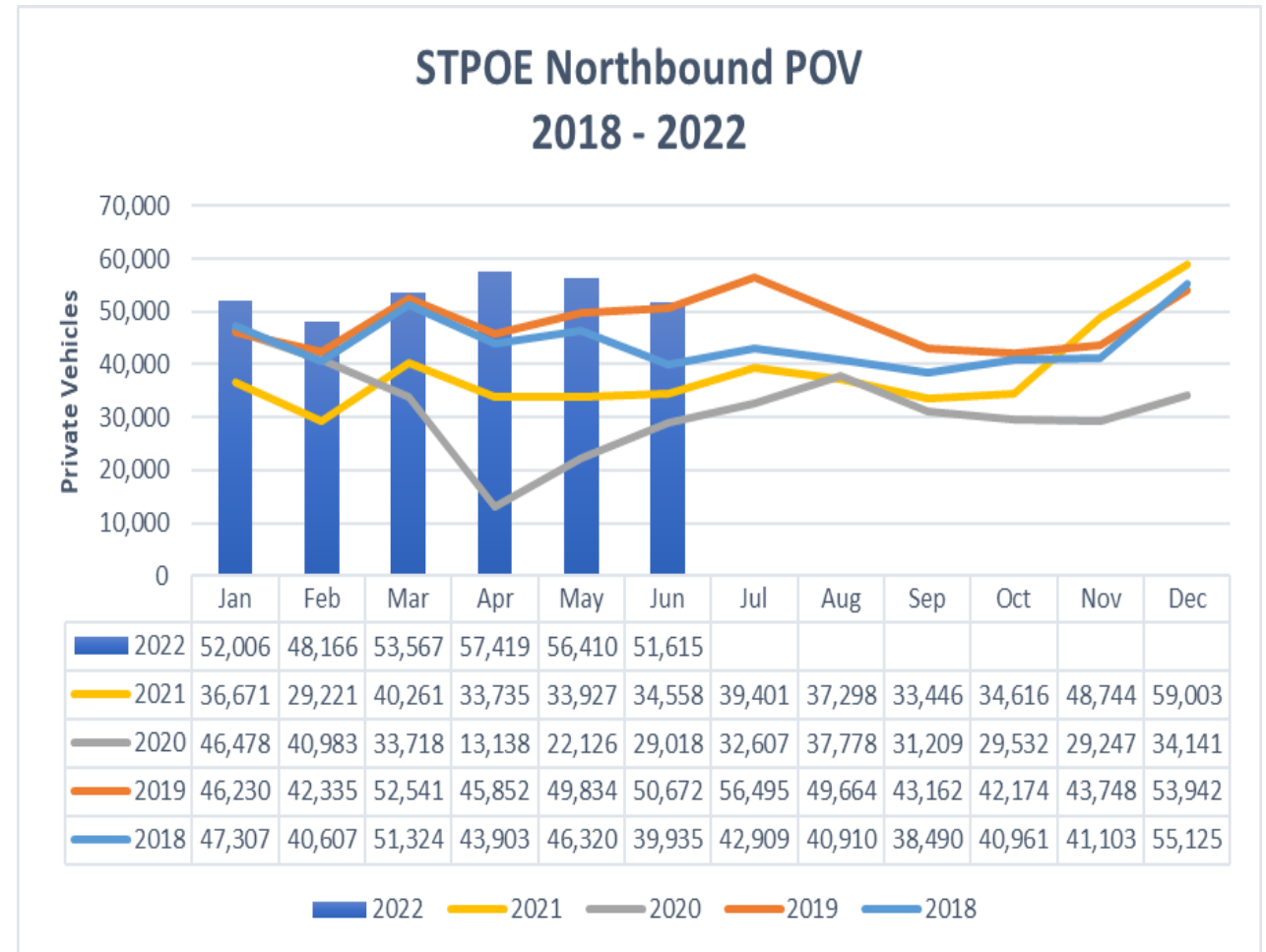
Columbus POE Commercial Vehicle Update

- Alfalfa hay was the leading commodity driving a surge in commercial traffic in May.
- The POE is up on the commercial side by 5% YTD.
- Chile season began in July.
- Currently, the port is averaging 100 -120 trucks per day.



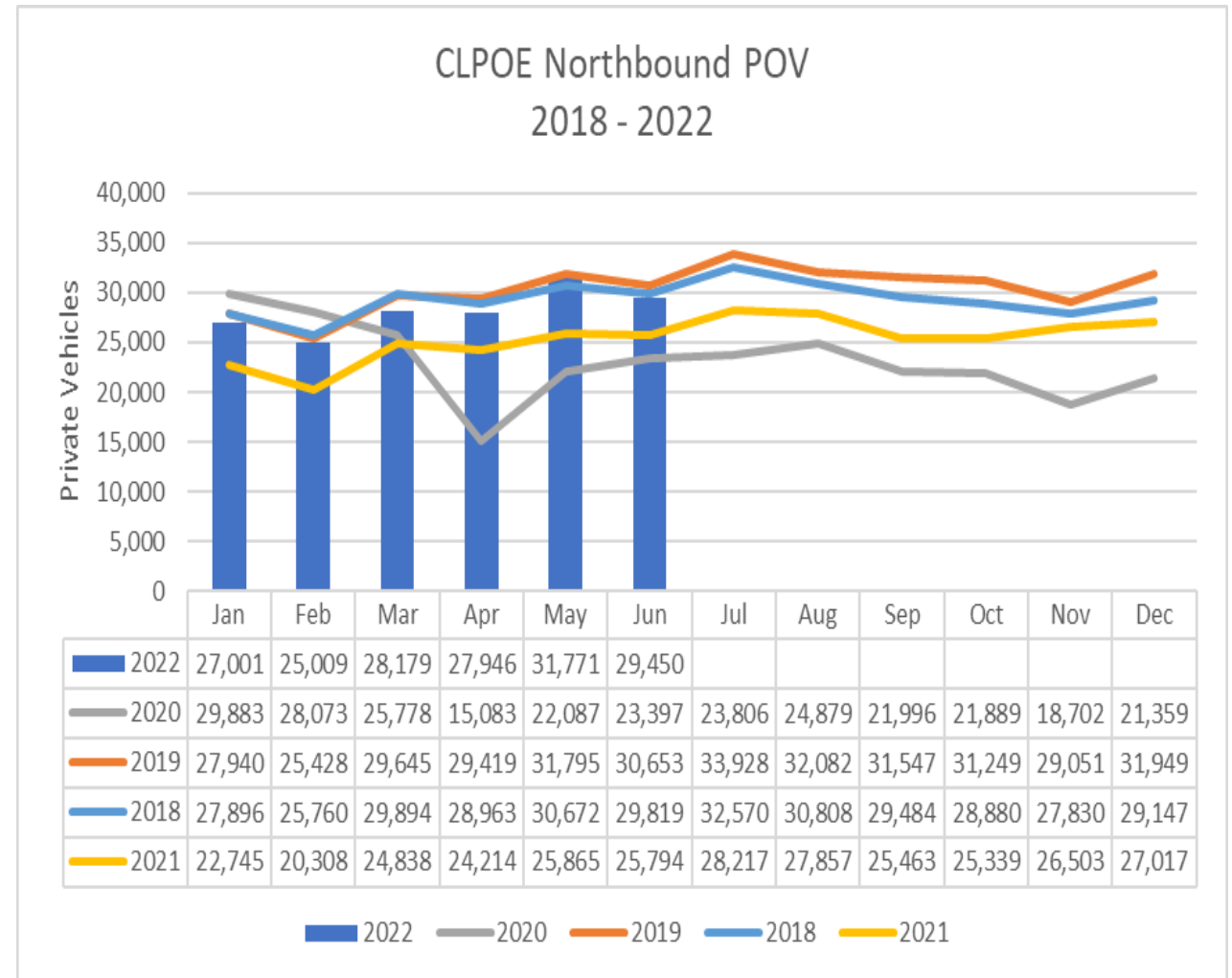
Santa Teresa POE Private Vehicle Update

- POE staff expect to top last year's total number of POV traffic.
- Last fiscal year, the port processed 411,438 private vehicles—this FY they expect to top 620,000.
- STPOE is currently averaging 1,817 vehicles a day.
- Average POV wait times:
 - 45 mins to an hour.

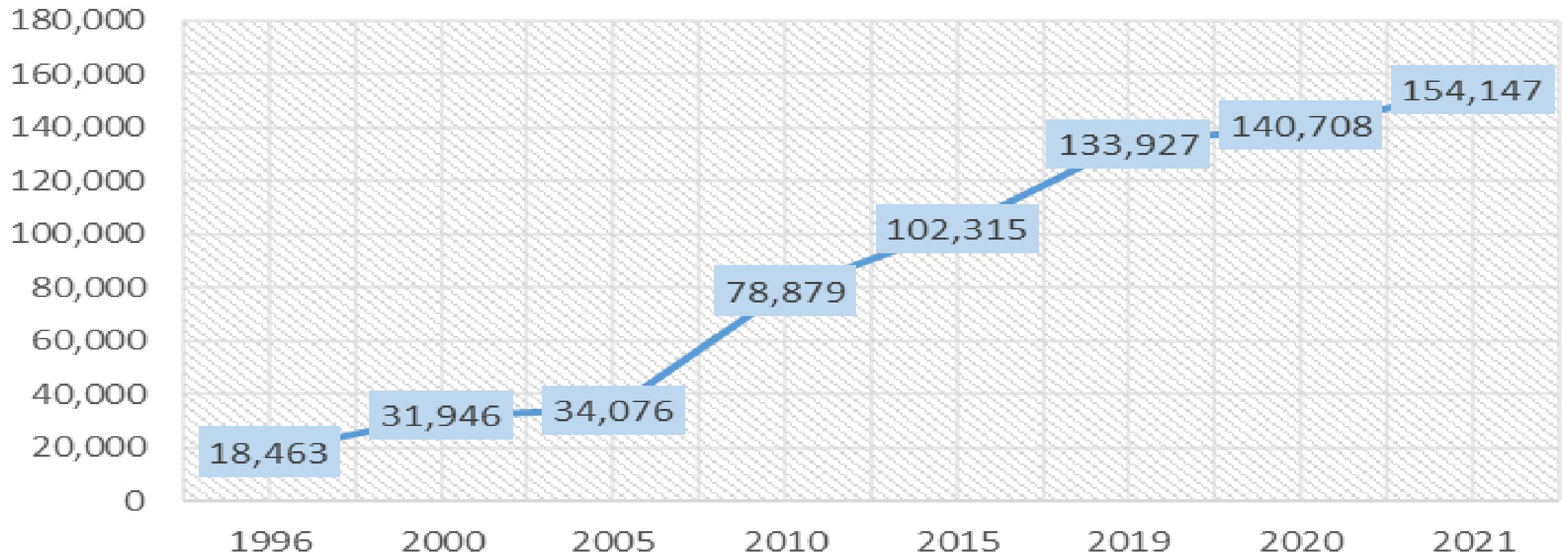


Columbus POE Private Vehicle Update

- POV traffic is up 36% compared to last year since the pandemic restrictions were eased.
- Average wait times for private vehicle travelers:
 - Under 30 minutes.



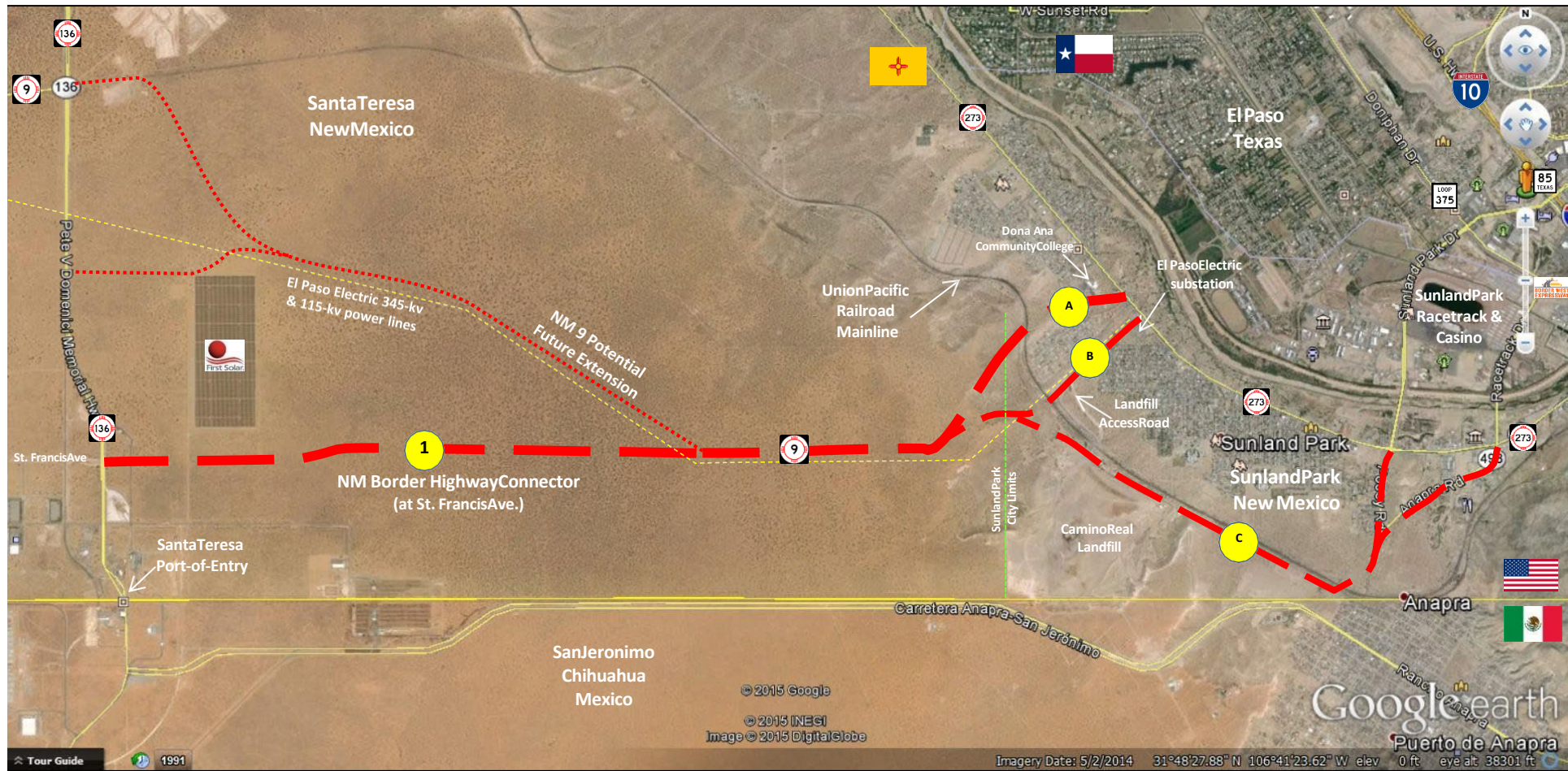
Santa Teresa POE Annual Truck Border Crossing (1996 - 2021)



Columbus POE Annual Truck Border Crossing (1996 - 2021)



NMBA Border Projects



The planned Border Highway Connector (St. Francis Dr. Extension) was fully funded by the state of New Mexico in 2022.

Project Benefits

The new roadway:

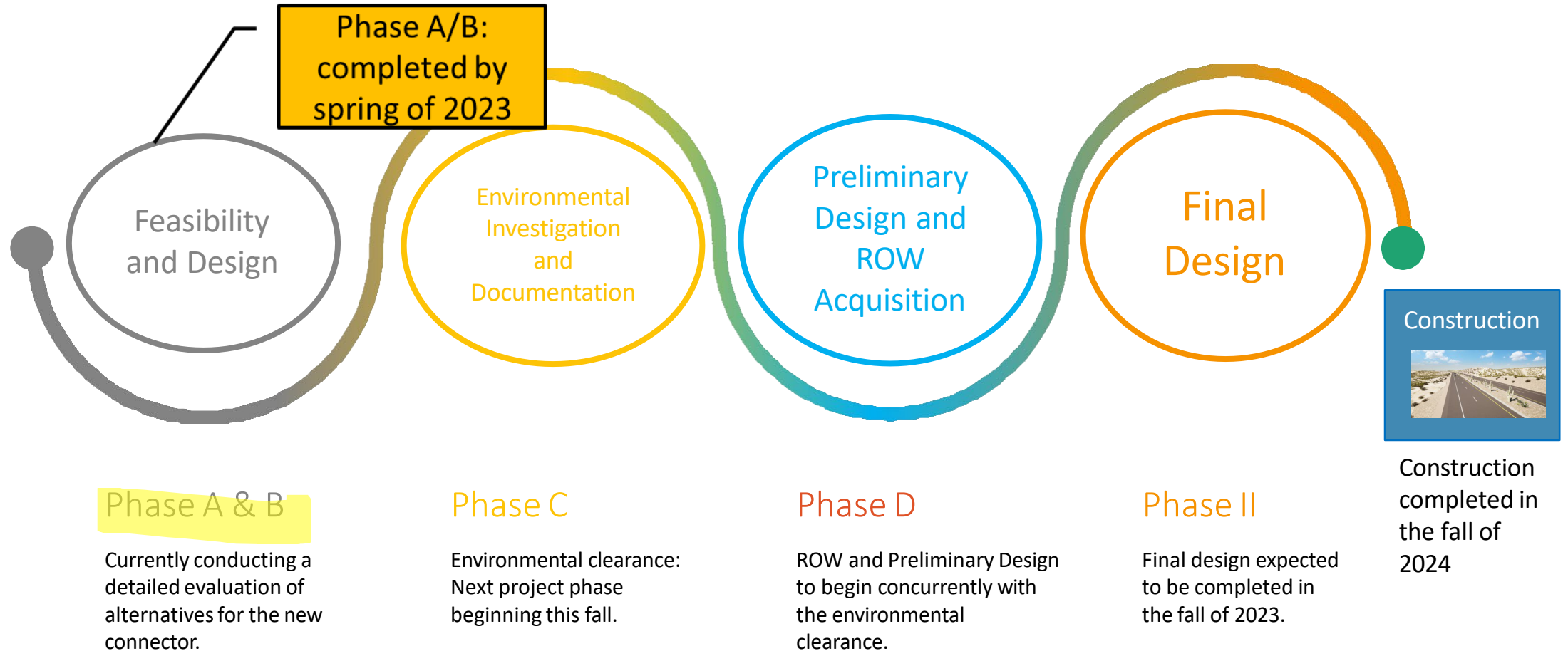
- will significantly reduce drive times to and from the City of El Paso and major highways - Interstate 10 and Loop 375.
- will address congestion at EP/ CDJ ports by attracting increased POV and commercial traffic to the Santa Teresa – San Jerónimo POE.
- creates a comprehensive and efficient transportation network in the region that will support expected economic growth.
- improves connectivity between major ports in southern New Mexico and far west Texas.

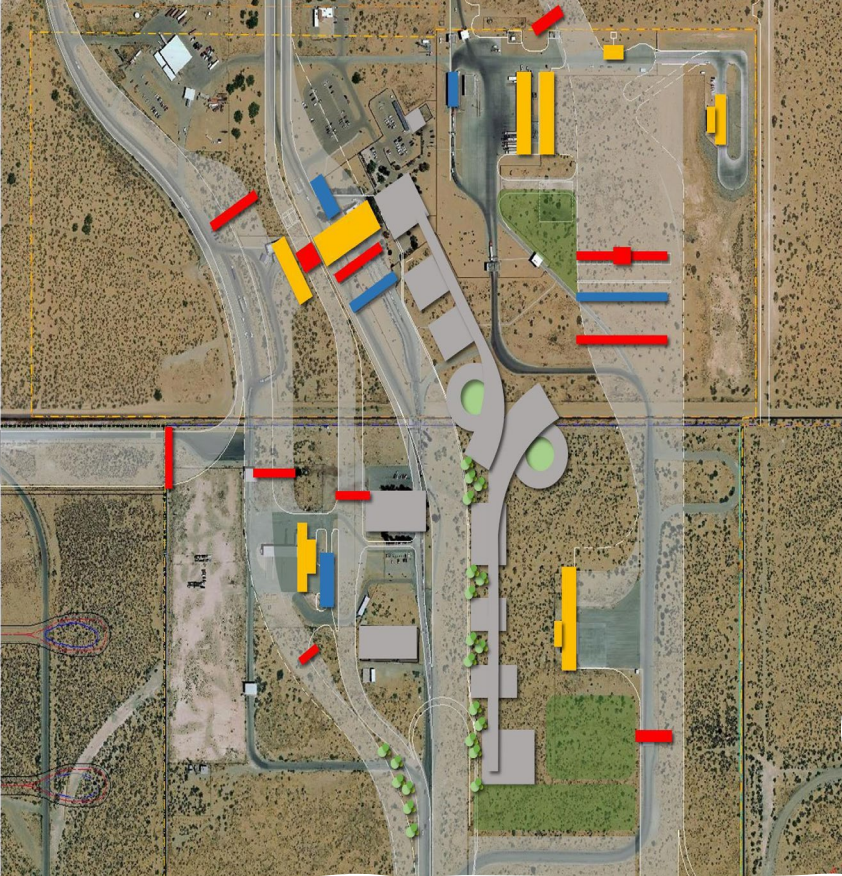
The connector will be owned and maintained by the NM Department of Transportation.



NM Border Highway Connector

Project Roadmap





Santa Teresa Port of Entry

Expansion and modernization

The New Mexico Border Authority secured \$500,000 in Congressionally Directed Spending this year, with support from NM's U.S. Senators, to complete the feasibility of an expansion and modernization of the Santa Teresa POE. This is the first phase of the critical project. The U.S. General Services Administration (GSA) will lead the project.

Port highlights:

- ✓ Santa Teresa is the designated oversized/ overweight port in the region.
- ✓ Commercial wait times range around thirty minutes or less.
- ✓ Designated as a hazardous materials crossing.
- ✓ Ranked 6th in overall trade on the southern border.
- ✓ Home to the largest livestock crossing of its kind in the nation.
- ✓ Processes approximately 50% of NM's worldwide exports.



Current phase: The feasibility is scheduled to begin this fall and conclude early next summer. **Project Manager:** Jeff Chiavetta, U.S. GSA.

Columbus Berm Project Update:

The NMBA in collaboration with Luna County Manager Chris Brice secured full funding to complete all phases of a critically needed flood protection project near the Columbus POE.

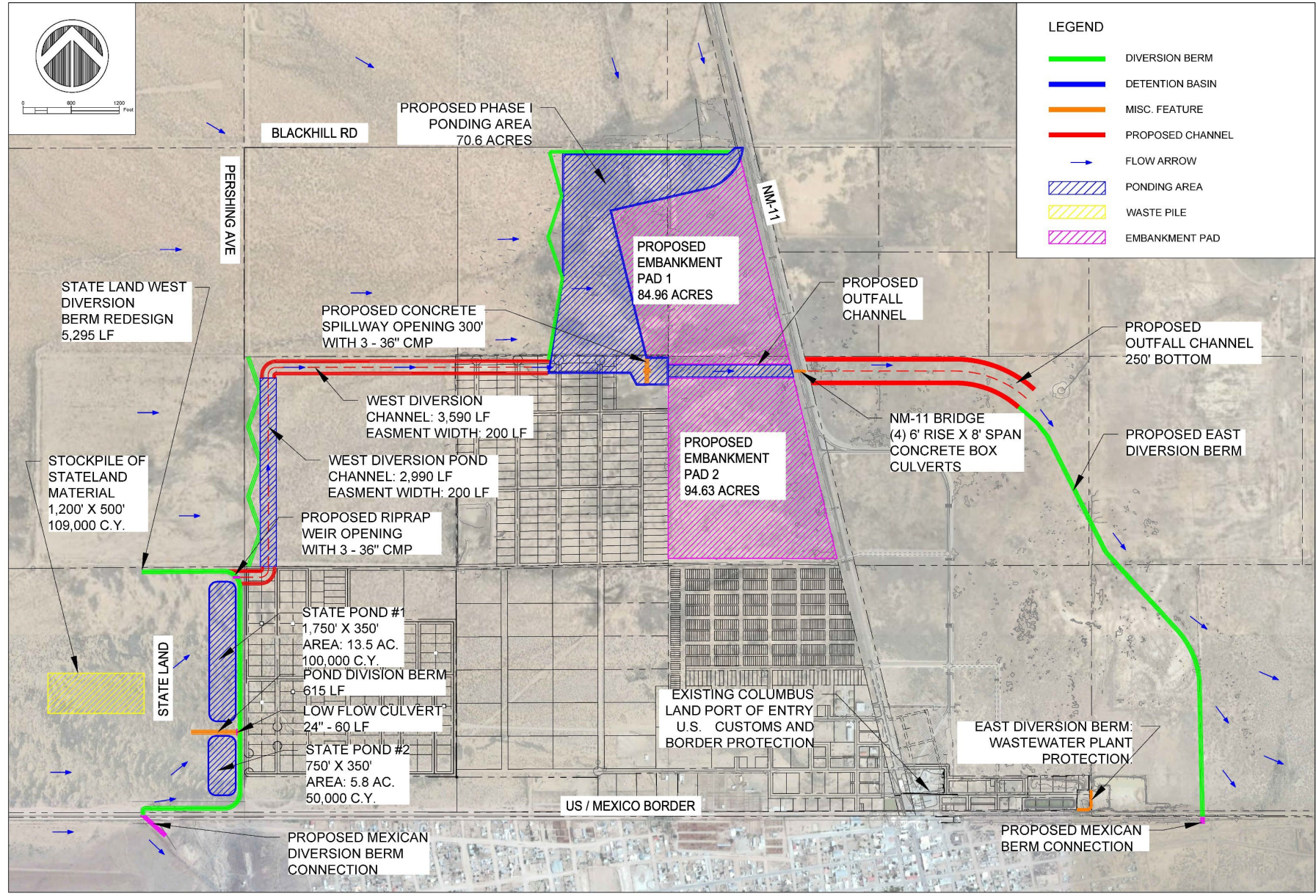
Total funding secured:

- \$18,075,000 (Capital Outlay, Legislative HB2 and Water Trust Board funding)
- \$1,000,000 (Congressionally Directed Spending, CDS, funds)

The current funding amount will allow the region to fully protect 1,355 acres of private, village and county land, along with several existing businesses, from regular flooding. Once completed, the project will allow the region to take full advantage of their international port of entry to promote economic development projects and create needed jobs.

Current Phase: the NMBA has secured a maintenance commitment from Luna County, and an initial agreement has been reached with a major landowner to purchase property needed to begin construction.

COLUMBUS LPOE - FLOOD CONTROL IMPROVEMENTS FULL PHASE



LEGEND

- DIVERSION BERM
- DETENTION BASIN
- MISC. FEATURE
- PROPOSED CHANNEL
- FLOW ARROW
- PONDING AREA
- WASTE PILE
- EMBANKMENT PAD

WILSON & COMPANY
 414 N. MAIN STREET, SUITE A
 COLUMBUS, NM 87901
 PHONE: 575-827-9257
 FAX: 575-827-9259
 www.wilsonco.com

CONSULTANTS
 LPOE FULL PHASE
 4/6/2022

PROJECT NAME
 VILLAGE OF COLUMBUS, N.M.
 LPOE DIVERSION BERM
 PHASE 1 DESIGN

REV.	DATE	DESCRIPTION	BY

PROJECT NO: 1660003802
 DESIGNED BY: ESH
 DRAWN BY: GAV, AMC
 CHECKED BY: ESH
 DATE: APRIL 2022

SHEET TITLE
 SITE PLAN

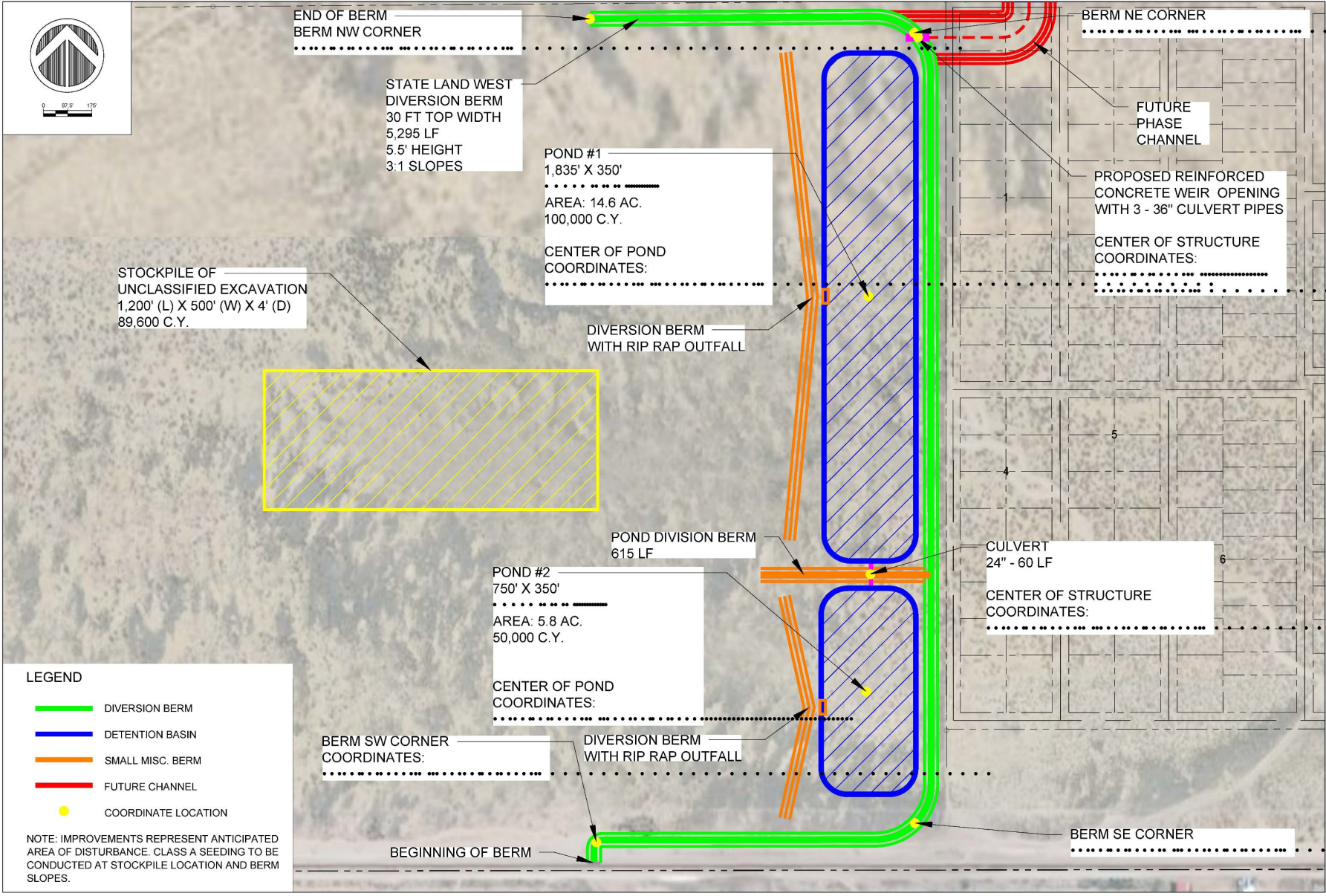
SHEET NO:

TOTAL UNITED STATES FLOOD PROTECTED AREA: 1,355 ACRES

M:\MSD\16-600-036-022_Disciplines\EXHIBITS\SANDERS COORDINATION\16603802_LPOE_Full Phase_2022.dwg

COLUMBUS FLOOD CONTROL PROJECT SITE PLAN

PROJECT#: LPDM-PJ-06-NM-2022-001



LEGEND

- DIVERSION BERM
- DETENTION BASIN
- SMALL MISC. BERM
- FUTURE CHANNEL
- COORDINATE LOCATION

NOTE: IMPROVEMENTS REPRESENT ANTICIPATED AREA OF DISTURBANCE. CLASS A SEEDING TO BE CONDUCTED AT STOCKPILE LOCATION AND BERM SLOPES.

WILSON & COMPANY
 414 N. MAIN STREET, SUITE A
 COLUMBUS, OHIO 43215
 PHONE: 614-527-9257
 FAX: 614-527-9259
 www.wilco.com

CONSULTANTS

LPOE STATE LAND
 7/26/2022

LPOE DIVERSION BERM
 STATE LAND
 IMPROVEMENTS

REV.	DATE	DESCRIPTION	BY

PROJECT NO: 1660003802
 DESIGNED BY: ESH
 DRAWN BY: GAV, AMC
 CHECKED BY: ESH
 DATE: JULY 2022

SHEET TITLE
 LPOE STATE LAND
 SITE PLAN

SHEET NO:

M:\MSD\16-600-036-022_Disciplines\EXHIBITS\SANDERS COORDINATION\16603802_LPOE_Full Phase_2022.dwg



Santa Teresa 1M Gallon Water Tank

The NMBA secured \$4.45 million in Capital Outlay funding to construct a one-million-gallon water tank in the Santa Teresa Industrial Park. The NMBA is partnering with the Camino Real Regional Utility Authority (CRRUA) to complete the project.

Need:

- The Santa Teresa industrial park regularly experiences dips in water pressure.
- The recurring issue affects the recruitment of companies.
- Emergency sprinkler systems affected: reports of businesses failing inspection due to water pressure dips.

Current phase: The NMBA expects to receive the secured state funding in the fall of 2022. An Intergovernmental Agreement (IGA) between the agency and CRRUA will be proposed to complete the project.



NMBA Revenue Generating projects:

NMBA Private Vehicle Parking lot facility and walkway to the Santa Teresa POE:

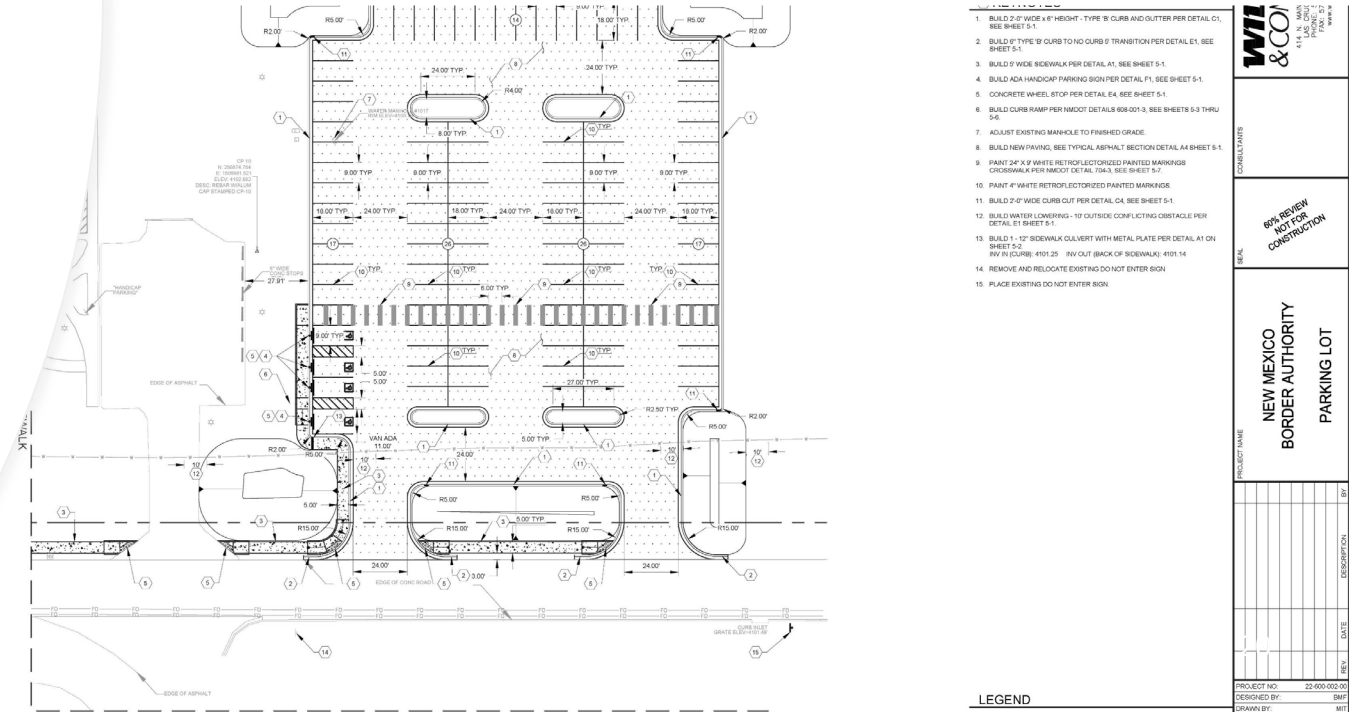
The NMBA secured \$618,000 in capital outlay funds to construct a new private vehicle parking lot and sidewalk to the port. The project is part of a long-term vision to develop state land near the port.

Current phase: the project design is currently 90% complete. The NMBA is working with U.S. CBP and GSA to transfer the sidewalk to the port through the Donations Acceptance Process.

NMBA Commercial Parking Lot enhancements:

The agency secured \$1.2 million in state funding to upgrade the commercial parking lot property. The enhancements will allow the agency to make better use of the entire four-acre property to secure additional Enterprise Funding.

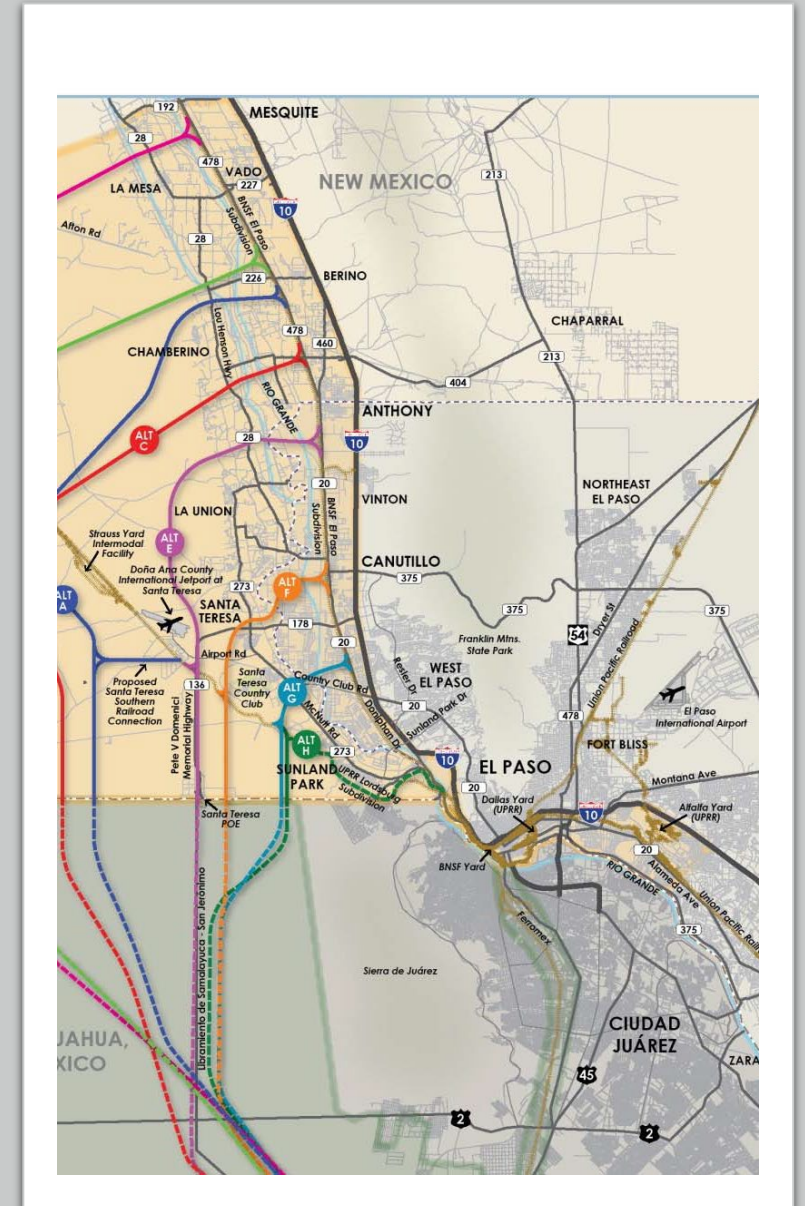
Current phase: the NMBA expects to receive the capital outlay funding in the fall of 2022.



NMBA Future Projects

Future Projects of Impact:

- ❑ The New Mexico Border Authority is proposing an **Infrastructure Border Development Strategic Plan**, which will take a comprehensive look at the Border region of New Mexico, Texas, and Chihuahua, Mexico. A successful Border Development Strategic Plan would develop a strategy that includes:
 - Required infrastructure improvements on the border and develop near-term and long-term prioritized recommendations.
 - Include consideration of transportation, water, wastewater, broadband, emergency services, and other public services/utilities.
 - Identify potential policy and legislative changes that may be required and consider regional and global economic trends.
- ❑ The NMBA, working with the New Mexico Department of Transportation, is proposing a feasibility study to extend the planned Border Highway Connector to the Texas state line. The long-term plan is to work with Texas transportation agencies to connect the new state connector with nearby El Paso highways and create an efficient loop that ties the Borderplex region.
- ❑ The NMBA is also proposing the completion of a Presidential Permit application, which would allow the construction of a future international rail crossing in the Santa Teresa Industrial Park region. New Mexico is the only border state without an international rail crossing. The state previously completed a *Santa Teresa International Rail Study Feasibility Corridor Study* in 2016.



Other Updates



NMBA Key Meetings and other Updates

NMBA Director Marco Grajeda and EDD Cabinet Secretary Alicia Keyes led a delegation from New Mexico and the state of Chihuahua to Mexico City for meetings with key Mexican federal officials.

- Key Outcome: Mexican President Andres Manuel Lopez Obrador listed the expansion and modernization of the San Jeronimo Port of Entry (Santa Teresa's sister port) as a presidential priority.

NMBA staff and Santa Teresa Port of Entry personnel were recognized by Juarez Industry for the regional support during the controversial increased inspections at Texas' international crossings in April.

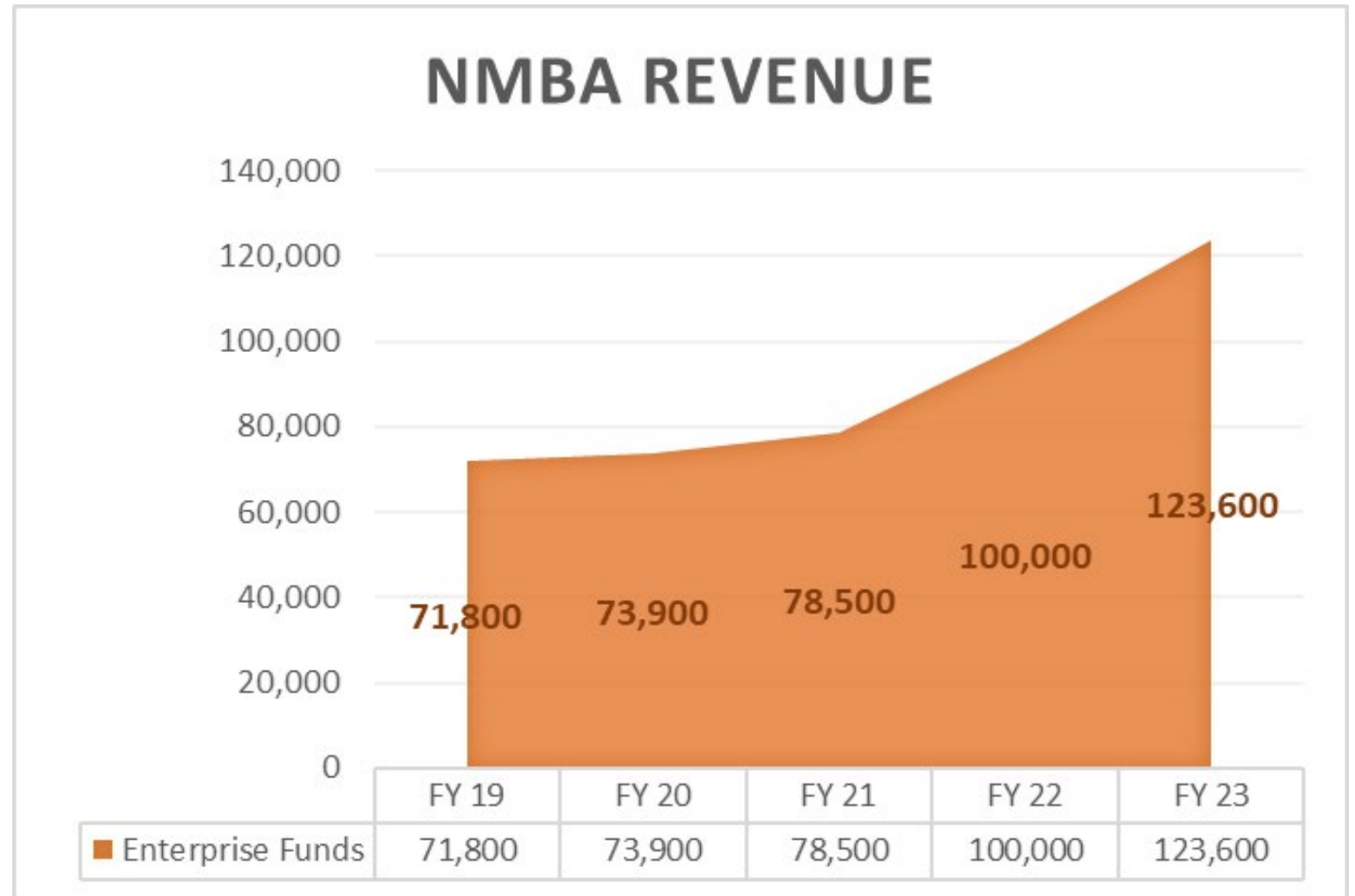
The NMBA submitted two new Congressionally Directed Spending requests which were referred to the U.S. Senate Appropriations Committee by Senators Martin Heinrich and Ben Ray Lujan:

- \$2.25 Million to complete a Presidential Permit for an international Rail Crossing in Santa Teresa. (Lujan)
- \$10 Million for the Phase II Design of the Santa Teresa Port of Entry Expansion and Modernization. (Heinrich)

The NMBA coordinated COVID vaccination drives with the New Mexico Office of Border Health for commercial truck drivers, industrial park employees and others. The agency also served as the distribution site for Rapid COVID tests for border businesses.

Non-Intrusive Inspection (NII) Technology at the Santa Teresa Port of Entry: construction work to install the new NII system will begin September 1, 2022, and last four months. Once up and running, the NII technology will expedite commercial crossings while increasing safety by inspecting 99% of all trucks coming across the border. *The pilot project was an important outcome from an NMBA hosted congressional field hearing in 2019.*

NMBA Enterprise Funding Outlook



The NMBA team is committed to:

- ✓ **Addressing key infrastructure priorities on the border and creating a roadmap for future investment.**
- ✓ **Increasing partnerships with all stakeholders at the local, regional, state and federal level.**
- ✓ **Making the executive branch state agency stronger with increased revenue to have a growing impact in the border region well into the future...**



Thank you!

Marco Grajeda
Executive Director
New Mexico Border Authority
(575) 997-8186
MarcoA.Grajeda@state.nm.us