

NM Radioactive and Hazardous Materials Committee: Lab Update

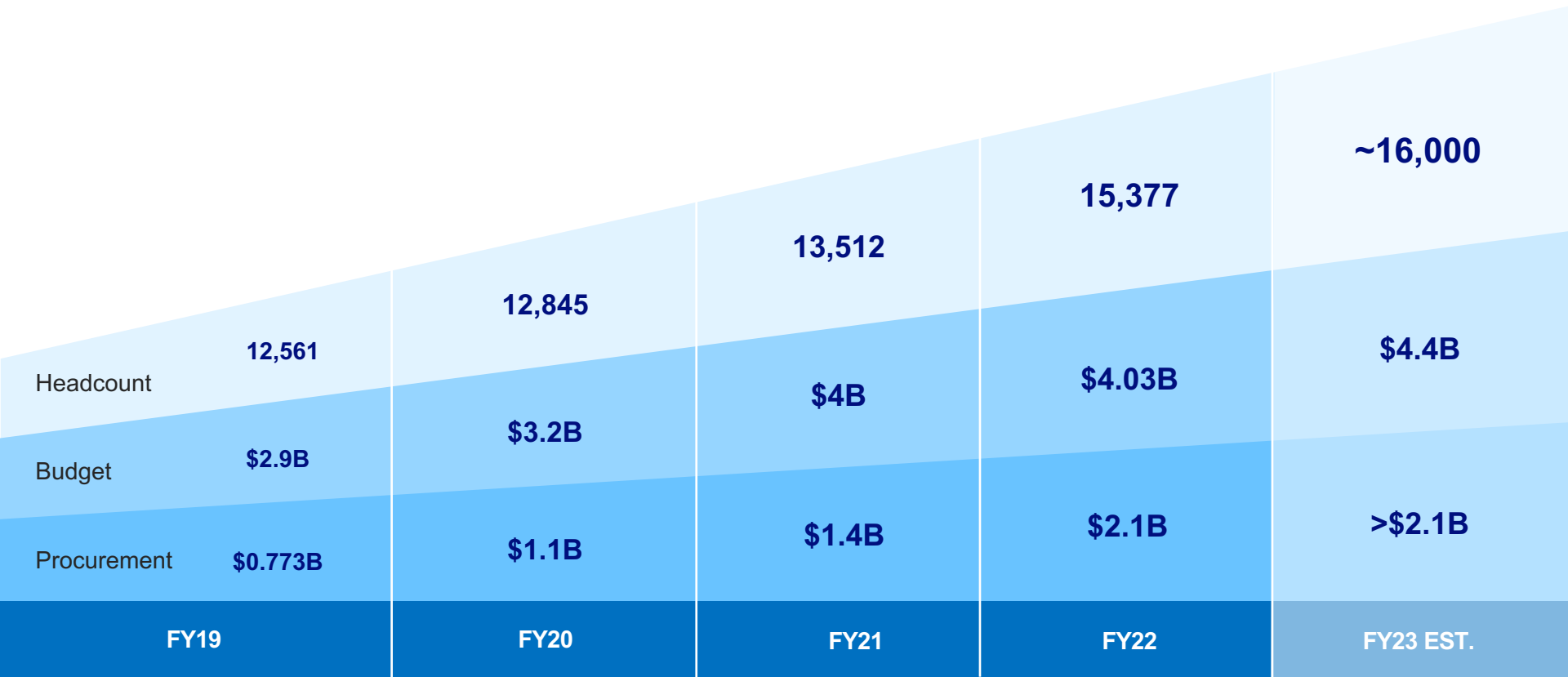
Frances Chadwick, Staff Director
LANL Director's Office

Kathy Keith, Director,
LANL Community Partnerships Office

11/14/2022



Significant increase in funding has driven hiring and procurement to record highs



Changing how we work to accommodate growth

- **Developing solutions to housing, childcare, and transportation issues related to our hiring**
 - Engaged nearby counties to help with the housing need
 - Exploring better transportation options
 - Updating facilities and infrastructure (Lab employs 1265 union members)
 - Leveraging telework (~3,500 telework/hybrid employees)
 - Looking into an independently-run childcare facility
- **Signed leases in Santa Fe**
 - Our second Santa Fe lease, on Pacheco St., can accommodate 1,200 hybrid office workers



Inside LANL: efforts to attract and retain staff

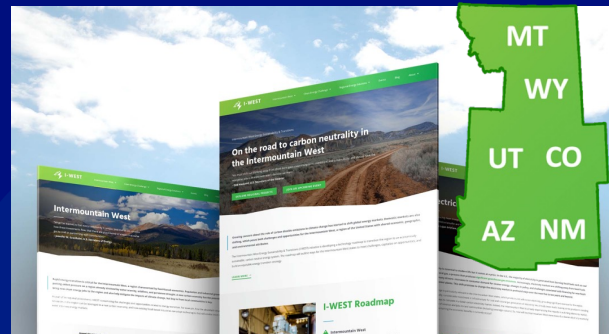


- **Launching a best-in-class benefits package**
- **Improving salary scales and expanding promotions**
- **Have 13 active Employee Resource Groups**
- **Average starting salary is \$103K**
- **Hiring from within the state: more than 60% of new hires in FY 2022 from New Mexico**

Science news



Using AI to predict drought impacts in the Colorado River Basin.



Los Alamos leads DOE's I-WEST initiative, looking at strategies and pathways for equitable transition to carbon neutrality.

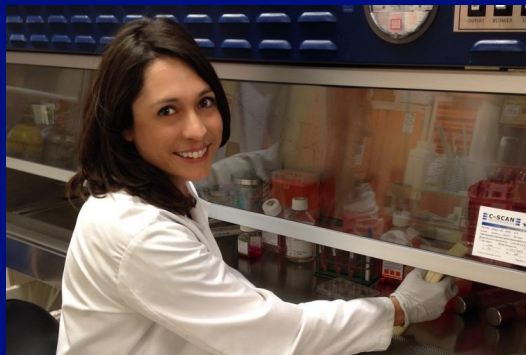


BOTTLE project update: Amazon joins consortium to work on reducing its packaging waste.



Developing hydrogen and fuel-cell technologies to decarbonize the transportation sector.

Economic development



First cohort in NM Lab-embedded Entrepreneur Program working on technology solutions to key challenges.



Partnering with the State on the TRGR initiative to advance technologies derived from LANL and Sandia to be market ready.



Paid \$110M in gross receipts tax in FY21.



LANL has provided \$1.9M in technical support to 104 companies through State-supported NM Small Business Assistance program.

Education and giving



Have 8 formal partnerships in place with NM colleges and schools for workforce pipeline and professional development programs.



Launched Challenge: Tomorrow trailers for mobile STEM education.



Supporting state-wide Supercomputing Challenge and Governor's STEM Challenge.



Employees donated \$2.7M in 2021 Giving Campaign and provided 14,600 service hours to orgs in NM in FY22.

Thank you