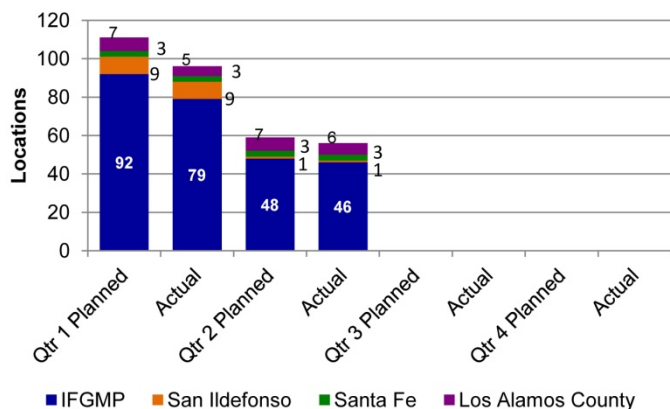


LANL Water Protection Status Report — FY12 2nd Qtr. (Jan. thru Mar. 2012)

	1 st Qtr	2 nd Qtr	3 rd Qtr	4 th Qtr
Groundwater Protection — Continued monitoring of the Buckman Direct Diversion and Los Alamos County Water Supply Wells	☑	☑		
Groundwater Protection — Continued implementation of the Interim Facility-Wide Groundwater Monitoring Plan (IFGMP)	☑	☑		
Surface Water Protection — Continued protection of surface water through implementation of the Individual Stormwater Permit (IP)	☑	☑		
Buckman Early Notification System operability at 100%	☑	☑		

Groundwater Protection

Groundwater Sampling by Event*



* An Event is a single-screen well location, each individual well screen for multi-screen wells, spring or base-flow location.

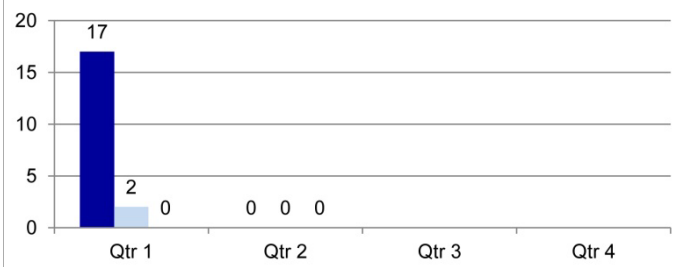
1st Quarter analytical summary: 16,279 Analytes tested with 0 new exceedances confirmed to be from LANL sources. (2nd Quarter pending)

Sampling Event Deviation Explanations:

- 1) 9 samples from the annual White Rock Canyon Raft trip were cancelled due to flood safety issues
- 2) 4 sampling events encountered dry wells
- 3) 3 LA County well events were shut down due to mechanical issues
- 4) 2 sampling events encountered inaccessibility issues (these will be revisited)

Surface Water Protection

Surface Water Flow Events and Discharges at LANL Boundary Gages



- Days w/Measured Flow at any LANL Gage Station (>5 cfs)
- Days w/Flow at LANL Boundary Gage Stations E050.1, E060.1, E125, E250, E265, E267, E275, and E338 (>5 cfs)
- Days w/Measured Flow at Buckman Early Notification Station E109.9 (>5 cfs)
- Days w/Flow at LANL Boundary Gage Stations E050.1, E060.1, E125, E250, E265, E267, E275, and E338 (>5 cfs)