



U.S. DEPARTMENT OF
ENERGY

OFFICE OF
**ENVIRONMENTAL
MANAGEMENT**

WIPP Status Update

Todd Shrader, Manager
DOE Carlsbad Field Office

for

*New Mexico Radioactive and Hazardous
Materials Committee
Carlsbad, New Mexico*

August 2, 2016



WIPP Progress

Path to Resumption of Waste Emplacement

- Documented Safety Analysis
- Interim Ventilation System
- Cold Operations
- Management Self Assessment
- Operational Readiness Reviews

Schedule Challenges

- Ground Control
- Interim Ventilation System

Changes to the National TRU Program

- New WIPP Waste Acceptance Criteria (WAC)
- Enhanced National TRU Program Requirements

Supplemental Environmental Projects

- WIPP north access road
- First responder training



Documented Safety Analysis (DSA)

Approved April 29, 2016

- Developed under new DOE Standard 3009-2014
- Approximately 120 Safety Management Program procedures created or revised
- Implementation declared complete on May 29



Cold Operations

Cold Operations began June 1, 2016

- WIPP crews are processing and downloading empty waste containers using new DSA Rev. 5 controls
- Originally scheduled for 8 weeks, now expanded to 10 weeks to complete necessary work evolutions
- Regular drills conducted to test safety management procedures





Management Self Assessment

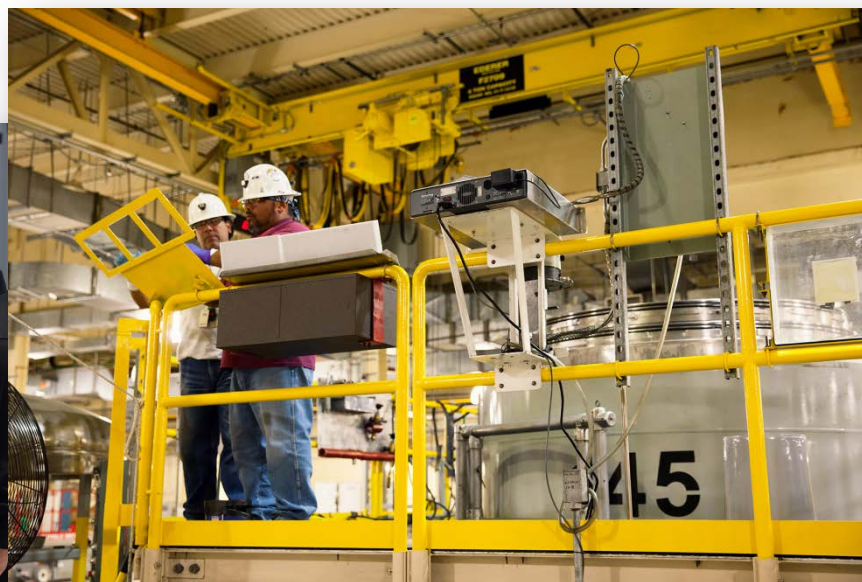
- Internal review contractor conducted by the WIPP Management & Operations contractor Nuclear Waste Partnership (NWP) to confirm operational readiness



Operational Readiness Reviews

Contractor and DOE Operational Readiness Reviews (ORR)

- Performance-based examination of facilities, equipment, personnel and procedures
- Will ensure WIPP will be operated safely – within approved safety envelope



Return to Waste Emplacement Operations



CBFO and NWP are working hard to resume waste emplacement operations in December. However, we have some non-critical path items are schedule challenges -

- Ground control remains a priority

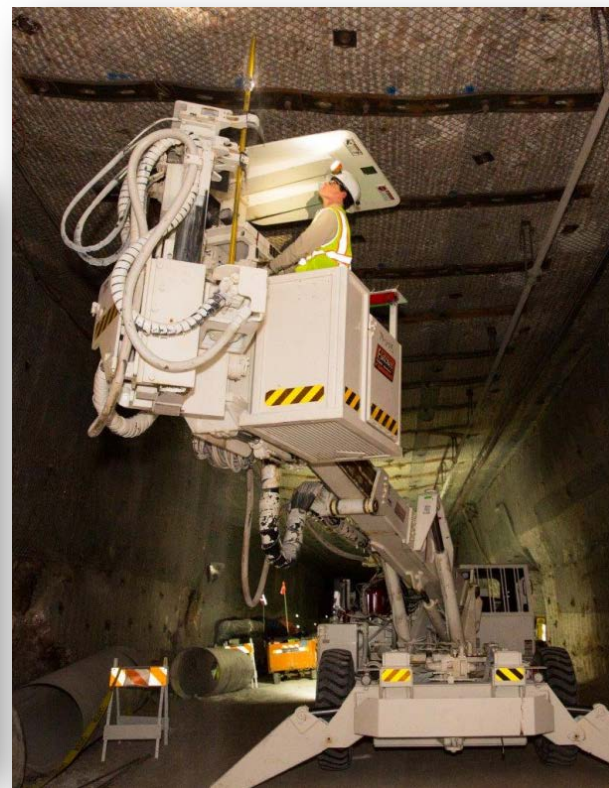
Roof bolt plate



Broken roof bolts



Floor heave



Hybrid bolter



Interim Ventilation System:



- Contractor operational readiness review identified weaknesses
- A management self-assessment is being done before the DOE readiness assessment for IVS

National TRU Program Changes

New and Enhanced Federal Oversight of Contractor Activities

- Increased oversight by Carlsbad Field Office and EM/HQ
- Clearer roles and responsibilities



New Waste Acceptance Criteria (WAC)

- WAC Revision 8 issued June 27, 2016 – Effective July 5, 2016
- Includes changes resulting from findings from the Accident Investigation Board (AIB) Phase 2 report on radiological release
- Incorporates requirements from the recently approved DSA Rev. 5 and chemical compatibility studies



New Requirements

- Enhanced Acceptable Knowledge - detailed re-review of source documentation for potentially incompatible materials and to ensure the adequate information basis
- Chemical Compatibility Evaluations – identifying the range of possible chemical combinations that could occur in each waste stream using EPA approved methodology
- Basis of Knowledge for Oxidizing Chemicals - Waste characterization programs must ensure that appropriate measures are taken to identify and treat waste to avoid potential effects from oxidizing chemicals; and



Generator Site Technical Reviews (GSTR)

- Performed by CBFO and NWP to ensure waste packaging and treatment activities meet requirements
- Verification of generator site controls and waste information meets new enhanced WIPP WAC compliance
- Beginning July 5, 2016 TRU waste generator site programs temporarily suspended certification of TRU waste, pending CBFO/NTP reviews necessary to validate compliance with the revised WIPP WAC



Supplemental Environmental Projects

Phase I of construction on WIPP north access road –

- 2 inch Recycle milling and hot relay completed July 11
- 2.5 inch hot mix overlay to begin August 8 – finishing August 26

Local mine safety equipment and training -

- Regional Response Capabilities Strategic Plan – developed for local mines
- Purchase of additional mine rescue equipment (portable VOC detectors and respirators)
- Training and qualification for mine rescue teams – WIPP and other local mines



Questions

