

WIPP Transportation Oversight

Eletha J. Trujillo, Bureau Chief
Energy Minerals & Natural Resources Department
1220 South Saint Francis Drive
Santa Fe, New Mexico 87505
emnrd.wipp.coordinator@state.nm.us



WIPP Transportation Safety Program Implementation Guide (aka Guide)

- The Western Governors' Association (WGA) Waste Isolation Pilot Plant (WIPP) Transportation Technical Advisory Group (Technical Advisory Group), in cooperation with the U.S. Department of Energy (DOE), developed this *WIPP Transportation Safety Program Implementation Guide (Guide)*.
- Western Interstate Energy Board (WIEB) High Level Radioactive Waste Committee (HLRWC) now manages the Guide updates and WIPP Route oversight for the Western states



**Western Interstate
Energy Board**



Guide continued...

- It presents the overall transportation issues, objectives, approaches and procedures which were agreed to by Western corridor state Governors and DOE through Memorandums of Agreement signed in 1995, 2003, and 2009.
- These issues, objectives, approaches and procedures govern the conduct of the highway transportation of transuranic waste through Western states.



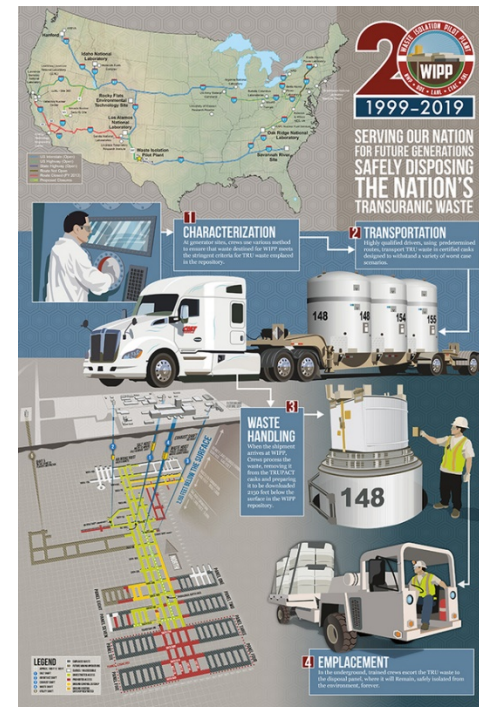
Within the Guide

- **List of Tables**

- Introductory Materials X
- Table 1: High–Quality Drivers and Carrier Compliance I–3
- Table 2: Independent Inspections II–3
- Table 3: Bad Weather and Road Conditions III–3
- Table 4: Safe Parking During Abnormal Conditions IV–3
- Table 5: Advance Notice of WIPP Shipments; Shipment Tracking; and Shipment Status..... V–5
- Table 6: Medical Preparedness VI–3
- Table 7: Training and Exercises VII–6
- Table 8: Emergency Response Plans and Procedures VIII–3
- Table 9: Emergency Response Equipment IX–3
- Table 10: Security Plan X–2
- Table 11: Public Information XI–3
- Table 12: Highway Routing of WIPP Shipments XII–4
- Table 13: Program Evaluation XIII–2
- Table 14: Appendix XIV–1

Critical Elements for Drivers

- Driver Hiring Qualifications and Requirements.
- WIPP drivers must meet very stringent requirements.
- In order to transport waste under the DOE contract, there are elements that must be met.
 - Legal requirements
- Driver Training



Driver Hiring Qualifications and Requirements

WIPP drivers must meet very stringent requirements. To be hired, drivers:

- Shall meet or exceed licensing, training, and physical qualifications set forth in the Code of Federal Regulations (CFR): “Qualifications of Drivers” 49 CFR 391; and the Commercial Motor Vehicle Safety Act of 1986 and subsequent amendments
- Must have logged a minimum of 325,000 miles in semi-tractor trailer combination within the last five years or 100,000 per year in two of the last five years
- Must have at least two years of uninterrupted semi-tractor trailer commercial driving experience during the last five years
- Shall not have repeated chargeable incidents, repeated convicted moving violations, or a single DWI or DUI in their private vehicles
- Shall not have received a chargeable incident or be convicted of a moving violation in a commercial motor vehicle within the past five years
- Shall have not been convicted of a felony
- Shall be a U.S. citizen
- Must pass a background check
- Must have a current commercial operator’s driver’s license and possess the proper endorsements, including: General Knowledge; combination vehicle, Class A; tank vehicle/hazardous material (endorsement X) or hazardous material endorsement H; cannot have intrastate restriction “K”

Once hired,

...a driver shall not be allowed to continue to transport waste under this contract under any of the following conditions:

- Conviction of a moving violation in a commercial motor vehicle
- Unauthorized second deviation from route
- Third failure to make mandatory DOE/WIPP Central Monitoring Room shipment notifications
- Chargeable accident in a commercial vehicle
- Second constant surveillance violations
- Maintaining repeated inadequate or deliberately fraudulent driver logs or other records
- Conviction of a felony
- Drug/Alcohol screening violation
- Conviction of a DWI or DUI in a motor vehicle

Driver Training



Drivers are also instructed in defensive, adverse weather, road hazards and mountain driving. These skills are used daily. Once hired, WIPP drivers are subject to stringent penalties if they do not follow WIPP-specific procedures.

Once hired and before being allowed to drive, drivers must take and pass these training requirements:

Radiation worker	Decision driver training
Dosimetry	TRUPACT-II tie-downs and recovery
Public affairs/media	Use of radiation detection instruments
Command and control	Specific TRUPACT-II inspections
First responder	Commercial Vehicle Safety Alliance (CVSA) inspector training
TRANSCOM	Enhanced North American CVSA inspector training
Radio communications	Constant surveillance
TRUPACT-II recovery	TRU waste shipment routing
Safe parking	General driver training for hazardous and radioactive material shipments
Adverse weather protocols	WIPP Site General Employee Training
Highway route controlled radioactive materials	

TRANSURANIC WASTE ACCEPTANCE CRITERIA FOR THE WASTE ISOLATION PILOT PLANT

DOE/WIPP-02-3122

TRANSURANIC WASTE ACCEPTANCE CRITERIA FOR THE WASTE ISOLATION PILOT PLANT

Revision 10

Effective Date: July 13, 2020
Effective Date updated through Interim Change Notice (ICN) #1 to:
August 14, 2020



This document supersedes DOE/WIPP-02-3122, REV. 9
This document implements the WIPP DSA

U.S. Department of Energy
Carlsbad Field Office



N.M. WIPP Transportation Program

Training Totals July 1, 2016, through June 30, 2022

NMSP - Emergency Response Officer Program:

- Total Training Hours: 26,493.5
- Total Students Trained: 3,133

Critical Incident Management Program Summary to Date

- Total CIM courses taught to date (8/2017 – 6/2022): 60
- Total students trained in CIM to date (8/2017-6/2022): 1,214
- Total CIM instructors trained to date: 6

NMSP - Commercial Vehicle Enforcement Program:

- Total Training Hours: 2,930.5
- Total Students Trained: 327

NMDOH Medical Services Program:

- Total Training Hours: 2,008
- Total Students Trained: 2,709

Local Fire Service Program:

- Total Training Hours: 336,806
- Total Students Trained: 8,024

Total Training Hours: 368,238
Total Students Trained: 14,193

Coordinated Effort With the DOE-CBFO

- Modular Emergency Radiological Response Transportation Training (MERRTT) scheduled along I-40 East Corridor
 - Clovis and Curry County
 - Tucumcari and Quay County
 - NMSP ERO Hazardous Materials Operations training – includes Compressed MERRTT



LAW ENFORCEMENT & EMERGENCY MANAGEMENT LIAISON – OFFICE OF SECURE TRANSPORTATION

- OST's liaison program communicates with law enforcement and public safety agencies nationwide, creating awareness of the OST mission.
- The program provides information to assist first responders during an OST emergency and provides direction for working with Federal agents during such an event.
- Through the liaison program, OST offers in-depth mission briefings.
- Law Enforcement Sensitive – Need to Know

Questions?