

Laboratory Update to RHMC

Frances Chadwick, Laboratory Staff Director

Kathy Keith, Community Partnerships Office Manager



November 2021

Today's agenda

1. LANL snapshot
2. COVID-19 updates
3. Infrastructure
4. Community investments
5. Questions



BATTELLE



LANL by the numbers



~13,500

employee headcount
in FY21



1,249

regular employees
hired in FY21



2,000

planned hires for
FY22



49%

minorities



75%

new hires who hail
from NM



\$4B

budget in FY21
(compared with \$3.2B in FY20)



\$419M

Procurements with NM
Businesses in FY21

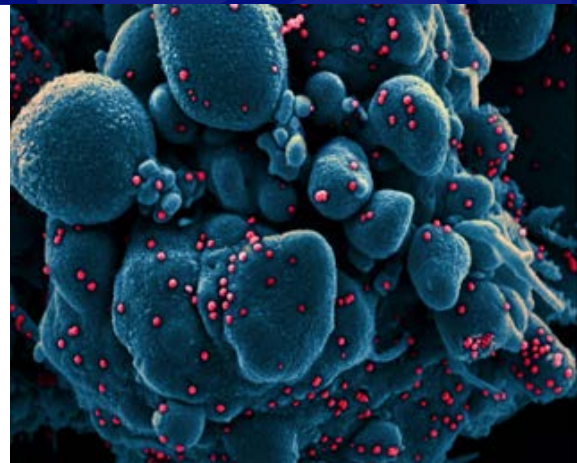
Protecting against COVID on-site and beyond

Playing a leadership role in COVID innovation

- LANL's capabilities help understand viruses, predict spread, and quantify the impact of vaccine strategies
- Our COVID-19 model is used by CDC and NM and we supply data to DOH on disease transmission & in support of school reopenings
- Made \$18M in internal and external investments to understand and respond to the virus

LANL was the first nuclear security site to test and first to vaccinate

- Teleworking reduced transmission for the Lab and in the community prior to vaccine development
- We mandated the vaccine; as of November, virtually all our workforce is vaccinated



Our mission also advances the frontiers of science:

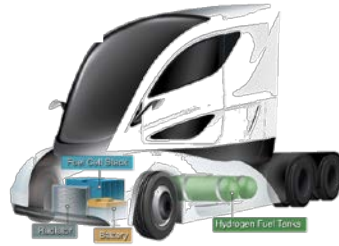
World-class, multidisciplinary science is in itself a form of deterrence



Our climate change scientists took part in the first year-long Arctic research expedition, helping create better climate models.



The CICE model shows how sea ice melts, moves and interacts with global climate patterns, helping scientists understand how sea ice influences our climate.



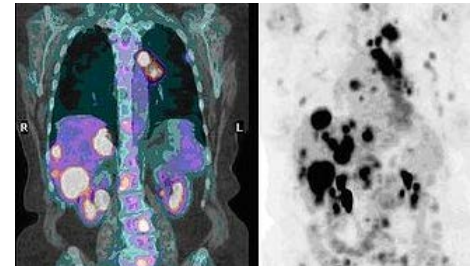
A partnership with national labs and industry is working to bring to market fuel cells that convert hydrogen and other renewable fuels into electricity.



The newest Mars Rover is exploring the Red Planet with a LANL-made instrument and fuel source.



We are contributing to the BOTTLE Consortium to make better, more recyclable plastics.



Our Isotope Production Facility generates radioactive isotopes that maximize damage to tumors while reducing impact to surrounding tissue.

LANL is renovating infrastructure, leasing new space, and stewarding our land



One of the newly leased & occupied buildings in Santa Fe

- **Making improvements to our 40-square-mile campus**
- **Signed leases for three locations in Northern NM**
 - Santa Fe employees work in HR, community relations, finance, and IT
 - Leases represent an economic investment into the region



LANL and Española-based PMI sign a subcontract for janitorial services and supplies

- **LANL directly & indirectly creates 24,000 jobs in NM**
- **We employ ~1,200 craft and are looking to grow**
 - Signed five-year labor agreement
- **Discussing housing needs at both the state and local level**



The Lab and NNSA donated cleared wood to local Pueblos as part of our wildfire mitigation strategy

- **Collaborate with pueblos, counties, and other entities to preserve biological and cultural resources**
- **Partnered with RTD to explore transportation enhancements**

Introducing Kathy Keith

Manager of the LANL Community
Partnerships Office



Supporting education

Pipeline programs help build our workforce

- LANL is collaborating with local schools for degrees in radiation protection (Northern NM College), engineering machining (SFCC), and mechanical engineering (UNM-LA)
- Another program prepares high school students for craft trades

Math & Science Academy program helps improve teaching and learning in NNM

Bradbury museum hosts free experiences aligned with state science standards

- Traveling science exhibits will be deployed around the state to explain the work of the Lab

Above is Isaiah Baldonado, an apprentice in the Machinist Apprentice Pipeline Program. At right, Billboards feature a variety of LANL staff and employees.



Supporting our neighbors

Employees donated \$2.6M to nonprofits in 2021

Triad invested \$2.5M in the region in FY21

- Funding goes to economic development, education initiatives, and support for regional nonprofits

Community Technical Assistance provides technical help to Northern NM; seven projects were completed this year

- Quivira Coalition, Carbon Ranch Initiative (Santa Fe)
- Santa Fe Entrepreneurial Ecosystem (Santa Fe)
- Acequia de los Indios (Santa Fe)
- NM Historic Sites, Coronado Historic Site (Sandoval)
- Santa Fe Community College (Santa Fe)
- Northern New Mexico College (Rio Arriba)
- Rocky Mountain Youth Corps (Taos)



Supporting NM businesses

The Laboratory spent almost \$393M on New Mexico small business contracts in FY21

- Lab offers a pricing preference of 10% for small biz in NNM, 15% for Pueblo Business Alliance members

State-supported NM Business Assistance Program provides free access to the expertise & capabilities of LANL and Sandia

Technology readiness initiative assists NM companies that license lab tech or engage in a research partnership

- Provides a \$4.5M tax credit for a three-year pilot and up to \$150K of assistance per year





Questions?

