

# Supporting Customers in Transition through PNM's Transportation Electrification Program

SCIENCE, TECHNOLOGY AND TELECOMMUNICATIONS COMMITTEE

JOHN WILLIAMSON, PNM

OCTOBER 31, 2024



Talk to us.



# PUBLIC SERVICE COMPANY OF NEW MEXICO (PNM)

## SERVING NEW MEXICANS FOR OVER 100 YEARS



- 530,000 retail customers across 40 communities
- Over 15,000 miles of transmission and distribution lines
- PNM's generation portfolio is 61% carbon free and on track 76% carbon free by 2026
- PNM has committed to be 100% carbon free by 2040
- PNM's 2024-2026 Transportation Electrification Program optimistically aims to provide more than \$22M in support for Electric Vehicle charger infrastructure

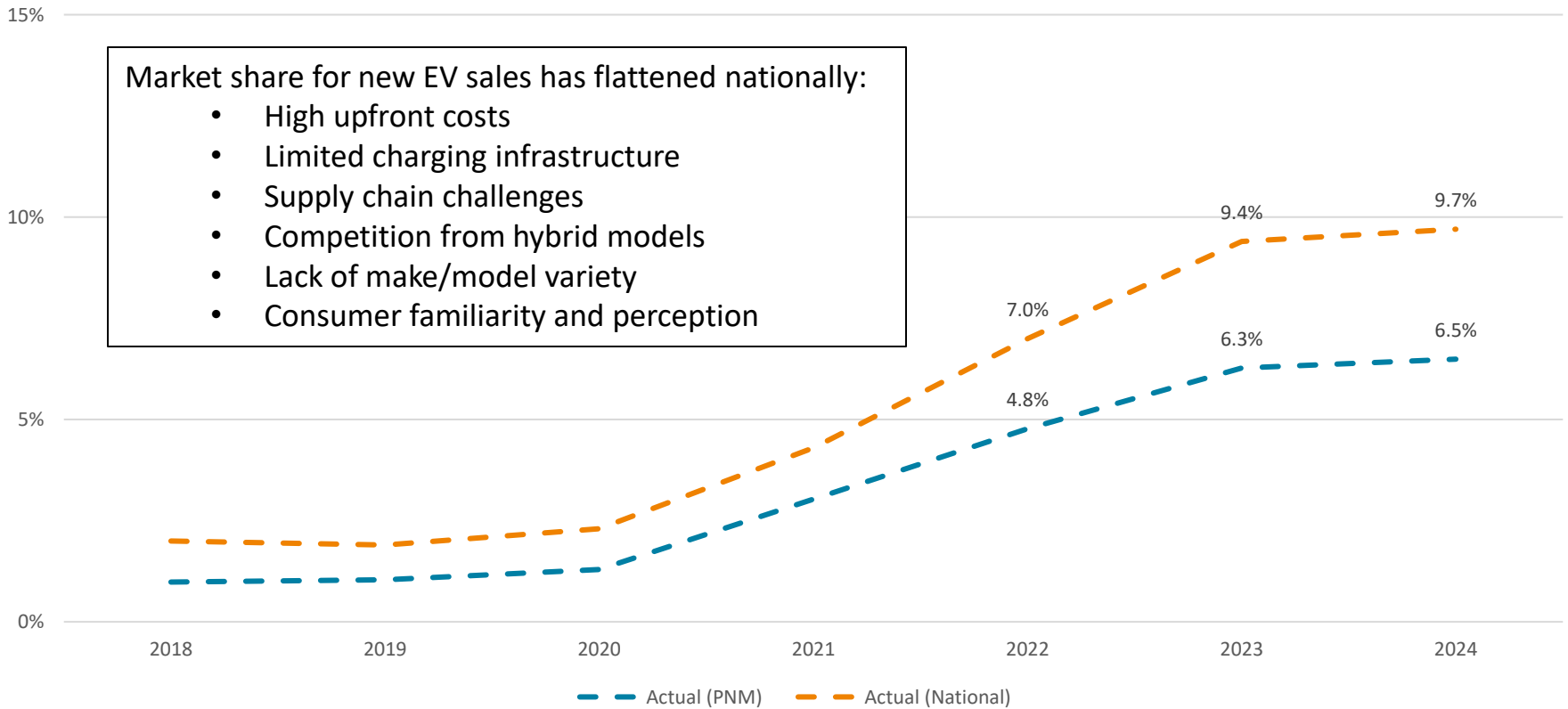


Talk to us.



# CURRENT EV ADOPTION – PNM TERRITORY

## MARKET SHARE OF NEW VEHICLE REGISTRATIONS



Data provided by EPRI, Inc.  
Actual market share data available through August 2024.



Talk to us.



# PNM TRANSPORTATION ELECTRIFICATION PROGRAM

## Program Component

Administrative Infrastructure	<b>Infrastructure Incentives</b>	<ul style="list-style-type: none"><li>• (Market &amp; Income-Qualified) Residential Level 2 Charger Purchase &amp; Installation Rebates (Fully implemented as of 6/1/2024); EV Purchase Rebates (Launch 10/31/24)</li><li>• Non-residential: Direct Current Fast Charger (DCFC) Make-Ready Rebates, Level 2 Make-Ready Rebates (Fully implemented as of 06/01/24)</li></ul>
	<b>EV Charging Pilot Rates</b>	<ul style="list-style-type: none"><li>• Whole-Home EV Charging Rate – lower base rate of electricity (~\$0.03 per kWh) for electric consumption between 10pm – 5am</li><li>• 3F EV Charging Station Pilot Rate – Volumetric rate with time-of-use component intended to reduce cost complexity for station owners; no square footage allowed</li></ul>
	<b>Market Transformation</b>	<ul style="list-style-type: none"><li>• Managed Charging Pilot Program (Vendor selection in process; expect to select a vendor and finalize contracts before end of year)</li><li>• Fleet Advisory Services Program (Vendor selection completed, program launches January 2025)</li></ul>
	<b>Education, Outreach, and Marketing</b>	<ul style="list-style-type: none"><li>• Education about the benefits of transportation electrification</li><li>• Program specific education and marketing materials</li><li>• Outreach about transportation electrification</li><li>• Income-Qualified Community Org Partnership(s) – Forthcoming; intend to complete RFI / RFP process to ensure cost efficacy / geographic coverage</li></ul>



Talk to us.



---

# EQUITY IN TRANSPORTATION ELECTRIFICATION

---

Ensuring equitable access to transportation electrification is critical, and PNM's Transportation Electrification Program has been designed to support EV charger infrastructure for income-qualified residential customers and to support EV charger projects in underserved areas.

- 55% of infrastructure incentives in 2022-2023 TEP went to income-qualified customers.
- 25% budgetary carveout for income-qualified customers.
- Supported Forth Affordable Mobility Platform (ABQ, Santa Fe)
- Education, Outreach and Marketing
- Low-Income Community Org Partnership



Talk to us.

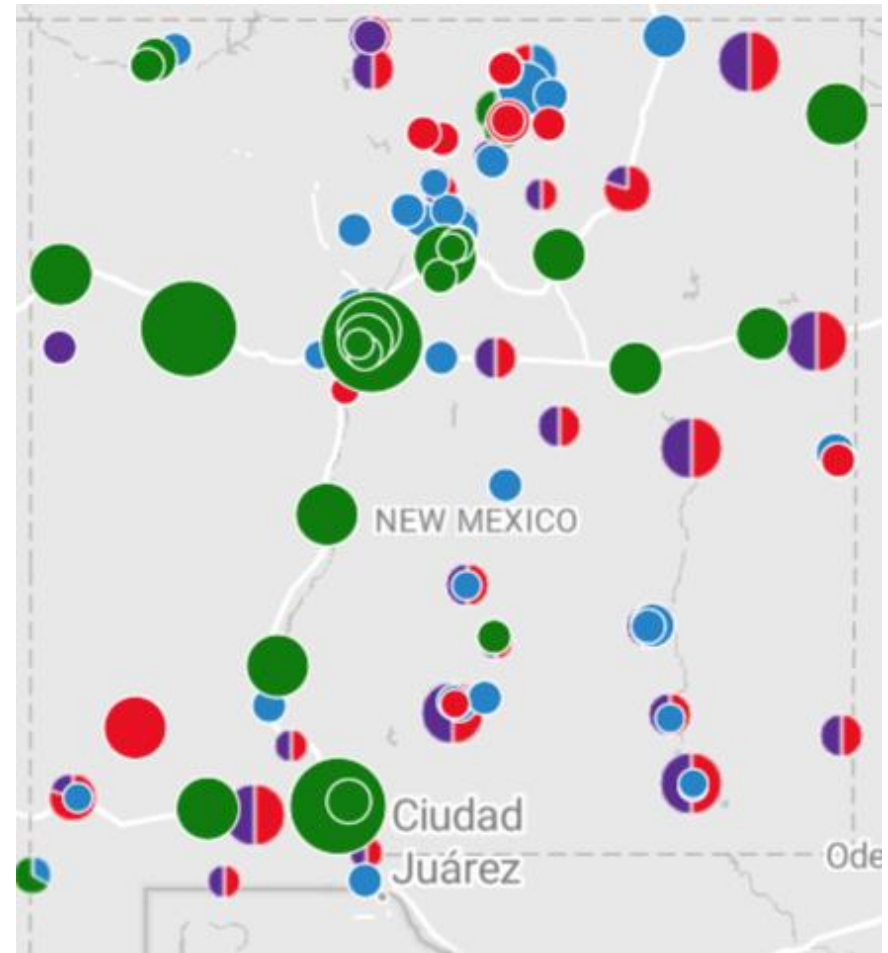


# EV CHARGERS IN NEW MEXICO

Today, New Mexico has 803 EV charger ports across 332 locations.

PNM has provided infrastructure incentives to 72 EV charger ports, and PNM has 92 additional EV charger ports in the pipeline.

PNM continues to engage organizations across market segments to actively encourage additional EV charger projects across our service area.



EV Connector Type ● J1772 ● J1772COMBO ● TESLA ● CHADEMO



Talk to us.



---

## DISTRIBUTION SYSTEM & IRP IMPACTS OF EV ADOPTION

---



PNM's Distribution Engineering teams are actively engaged to understand impacts of EV charging on distribution system and incorporate plans to serve.

PNM's Integrated Resource Planning and Load Forecasting teams incorporate EV adoption forecasts and load requirements into generation capacity planning for existing and future Integrated Resource Plans.



Talk to us.



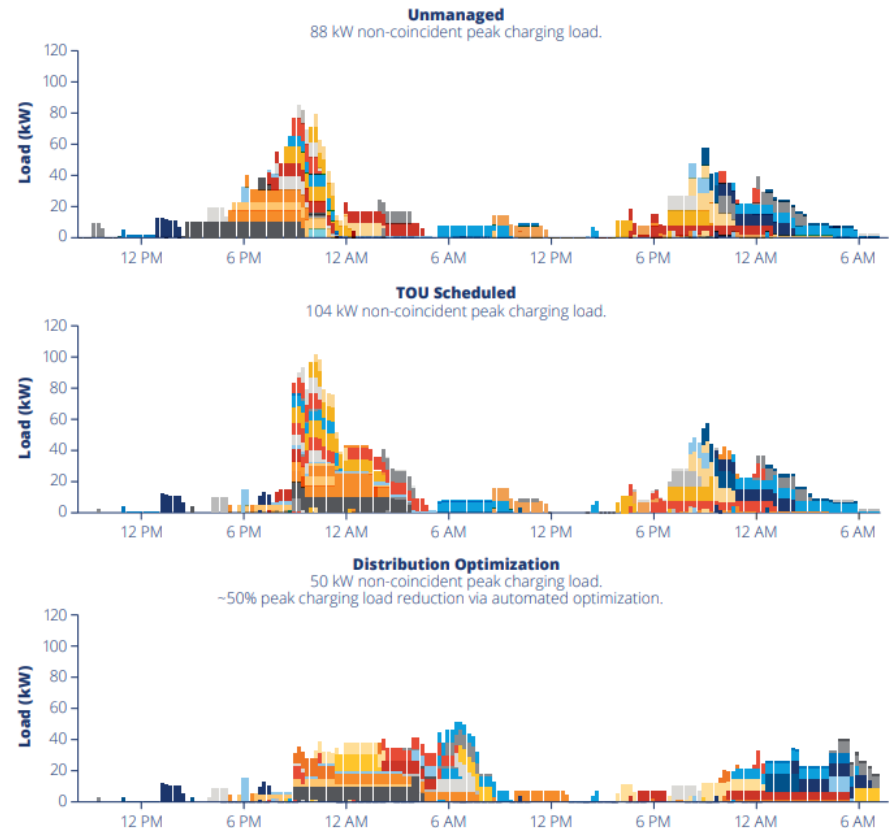
# PROACTIVELY MANAGING EV CHARGING LOADS

Active managed EV charging programs represent significant opportunity to mitigate distribution impacts of residential EV charging load.

PNM is reviewing vendor proposals for an active managed charging pilot program.

Active managed charging will ensure distribution infrastructure investments are right-sized.

**Figure 3. Using Load Management Software for EV Charging Optimization: Portland General Electric & WeaveGrid Implementation**



Note: Scenario represents 48 hours period (Friday - Saturday) on a feeder segment with high EV penetration with 53 total EVs, 32 EVs active in period, and 44 charging sessions. Each color represents a unique vehicle.  
Source: WeaveGrid. (2024). Recreated by SEPA.



---

# FLEET ADVISORY SERVICES PILOT PROGRAM

---



Many fleet vehicles are ideal for electrification as they have regular and predictable duty cycles and electric powertrains represent reduced operation and maintenance costs for many use cases.

PNM's Fleet Advisory Services Pilot Program is expected to launch in January 2025. Participants can expect to receive:

- Fleet electrification potential study
- Total cost of ownership analysis
- EV charging infrastructure needs analysis



Talk to us.





Talk to us.

