

State of the Wireless Industry: New Mexico

Gerry Keegan
CTIA

New Mexico Science, Technology &
Telecommunications Committee
November 14, 2016

Wireless in New Mexico

As of December 2015:

- 1.98 Million Wireless Subscribers
- 95% Wireless Penetration Rate
- 8 Wireless Providers Operating
- 52% of adults and 66% of children live in wireless-only households in New Mexico

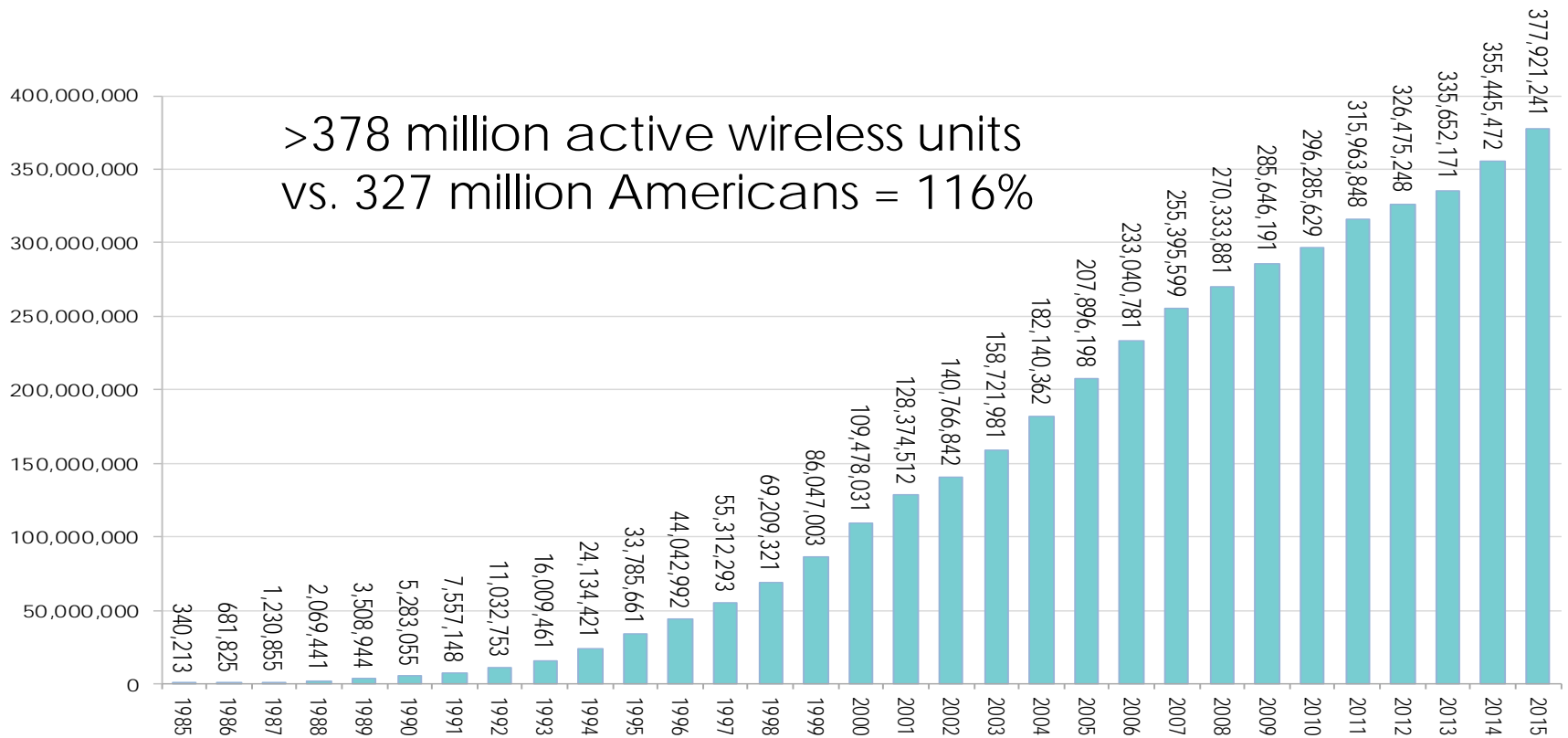
Wireless: A Jobs Creator & Investor

- 4,200 employees In New Mexico
- \$308.68 million in wages
- Invested over \$131 million in 2014 and \$487 million between 2012-2014

Wireless: An Economic Driver

- Direct economic impact = **\$6.47 billion** a year
- Suppliers = 29,010 jobs, \$1.86 billion in wages, and **\$6.50 billion** in total output a year
- Wireless companies, their suppliers, and induced economic impact create over **53,000 jobs**, generating **\$3.21 billion in wages**, and total economic output of **\$16.31 billion** annually

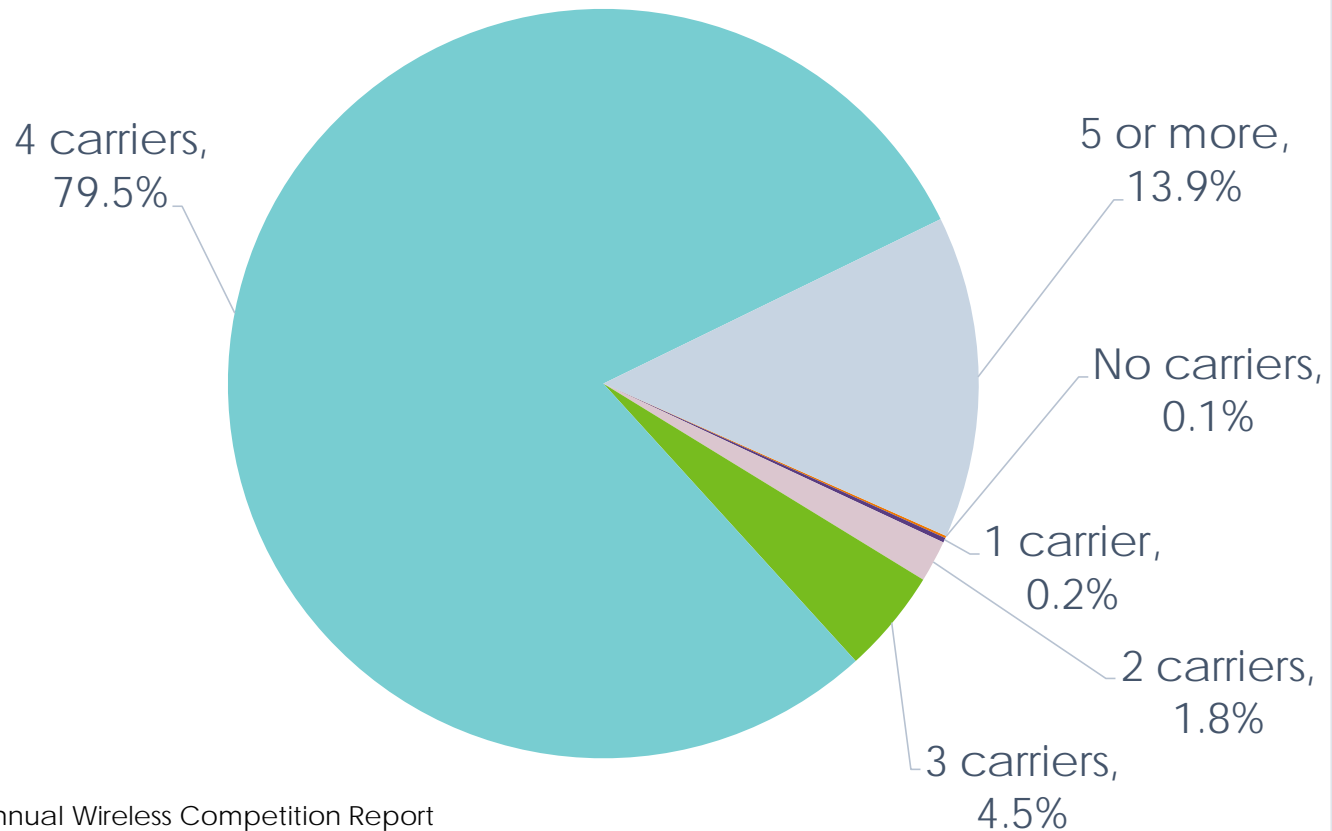
U.S. Wireless Penetration Exceeds Population



Source: CTIA Wireless Industry Survey

Wireless Has Delivered More Choices Overall

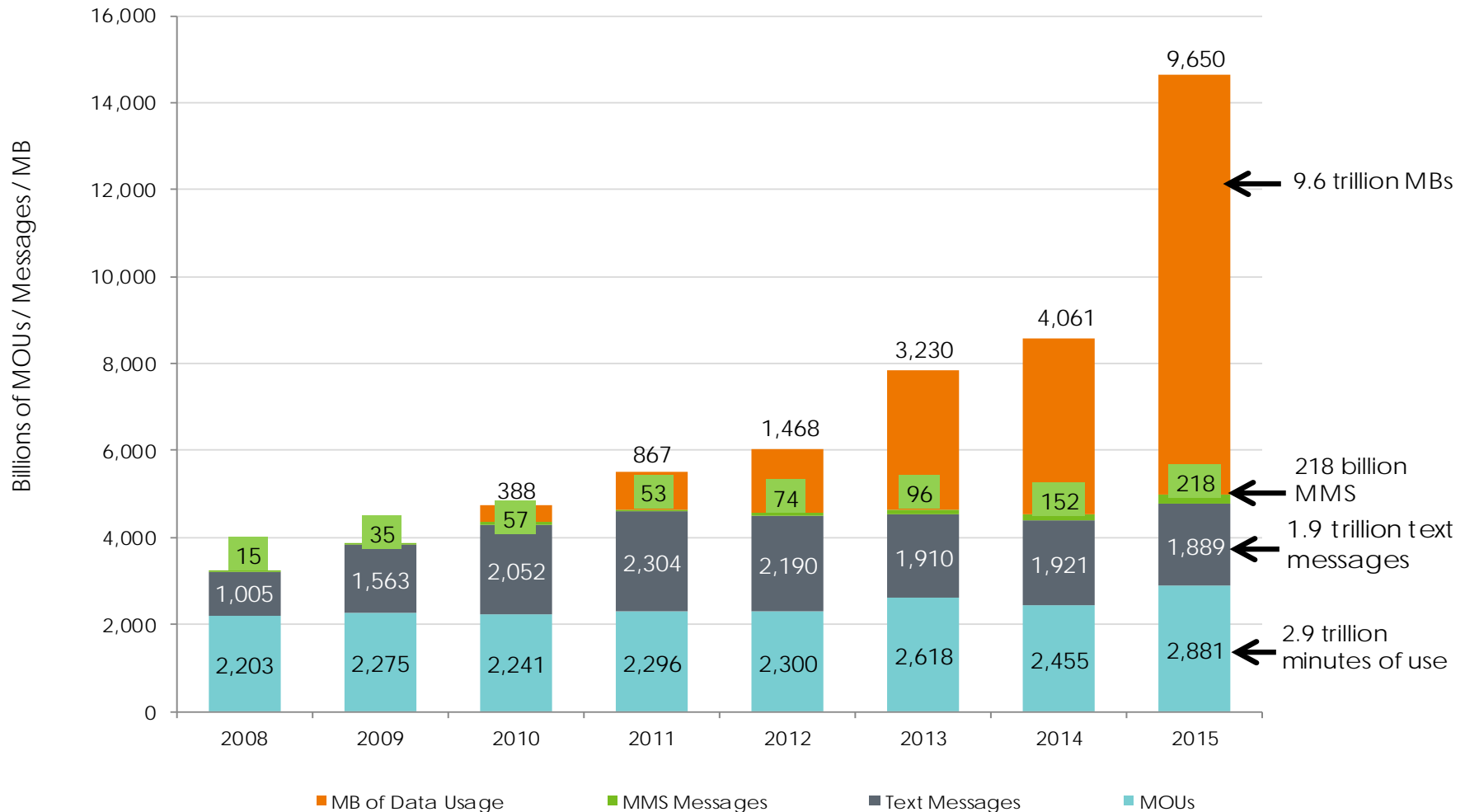
93.4% of Consumers Have a Choice of 4 or More Wireless Providers, YE2015



Source: FCC 19th Annual Wireless Competition Report

Actual Mobile Traffic Growth

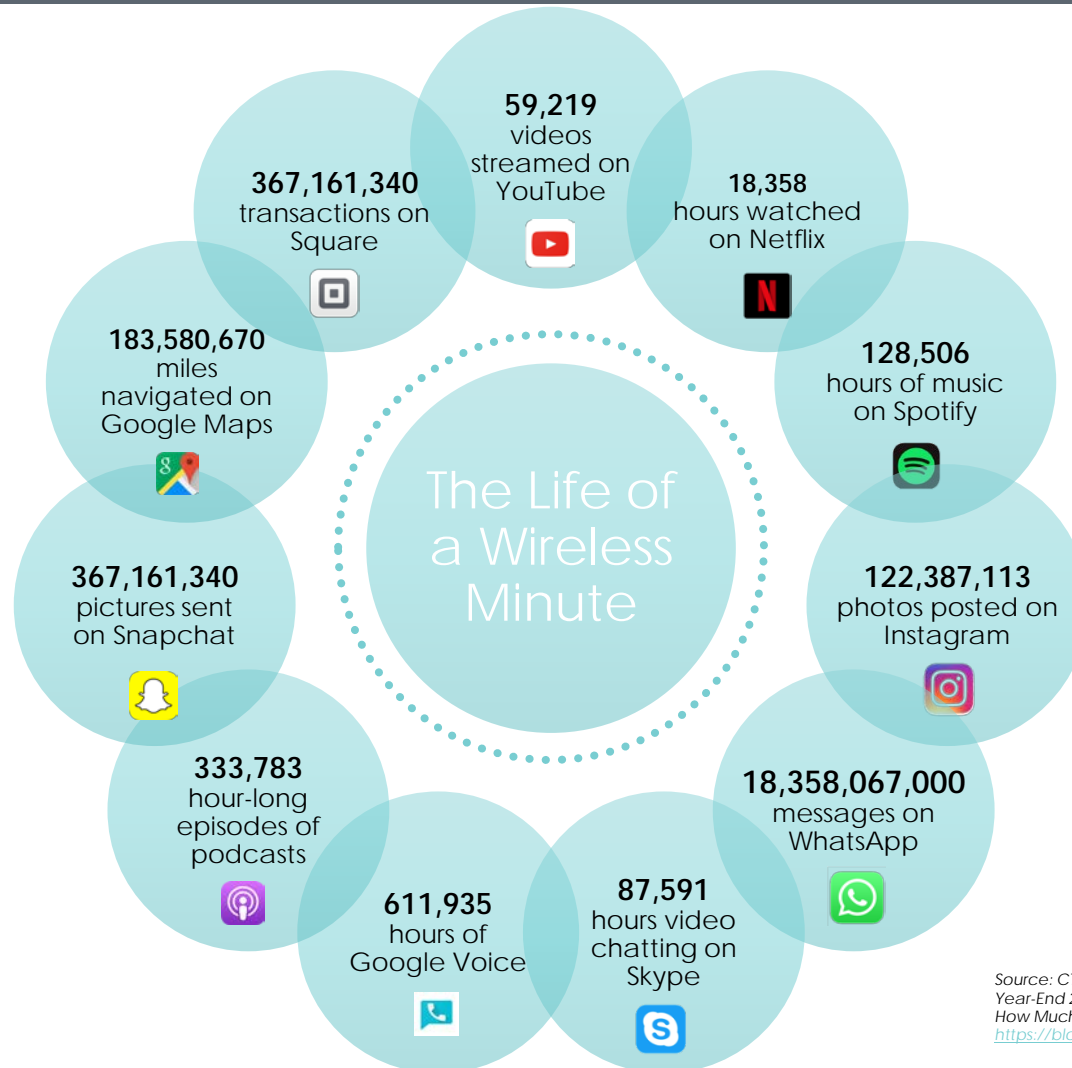
Annual Minutes, Messages and Megabytes of Wireless Traffic



The Past

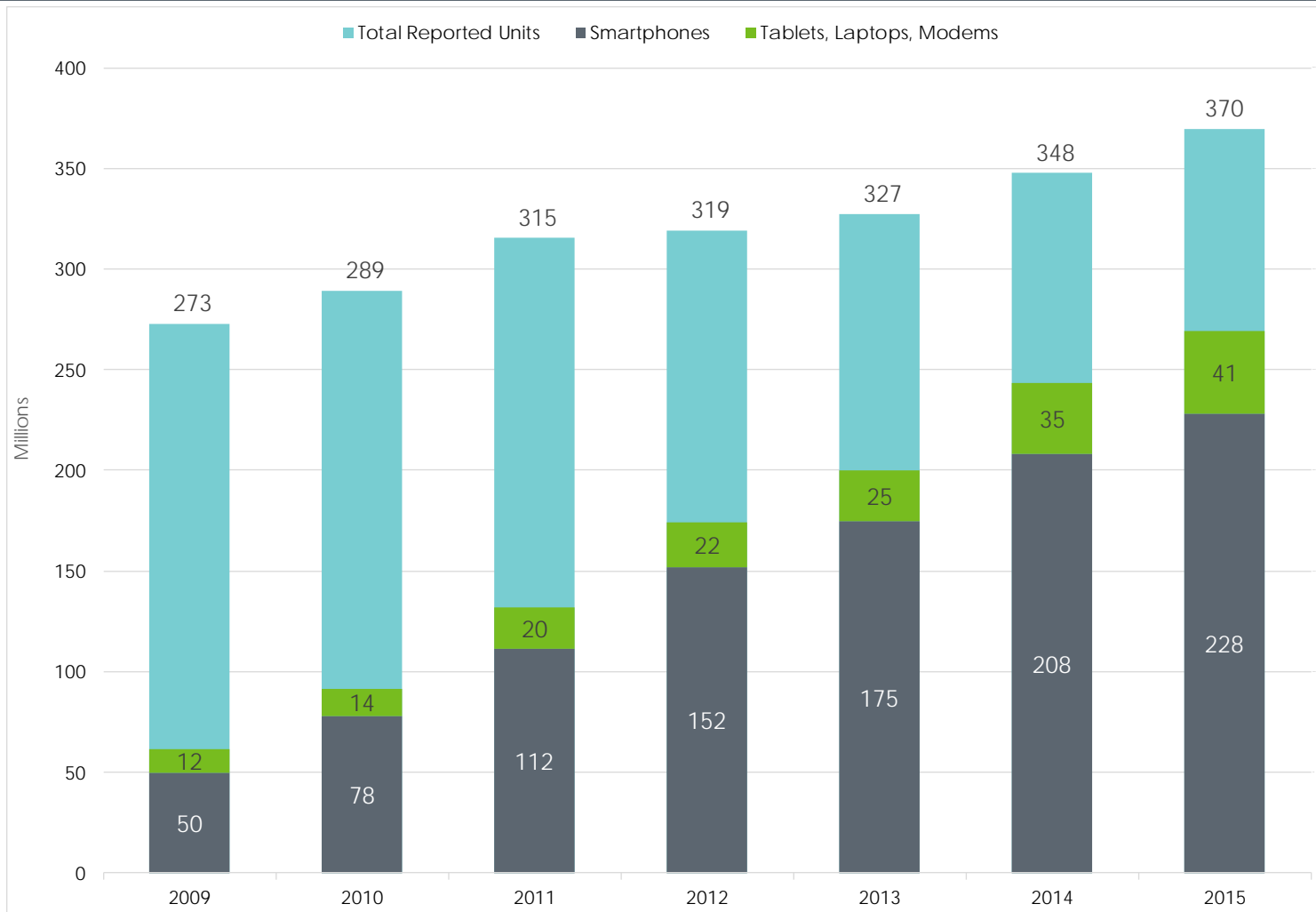


Now: The Mobile Minute



Source: CTIA, CTIA's Wireless Industry Summary Report, Year-End 2015 Results, 2015 and YourKarma, But Really, How Much Data Do My Apps Use?, April 2015; available at: <https://blog.yourkarma.com/how-much-data-do-my-apps-use>

Smartphones, Tablets, and Other Devices



Source: CTIA Wireless Industry Survey

Advanced Devices Affect Traffic

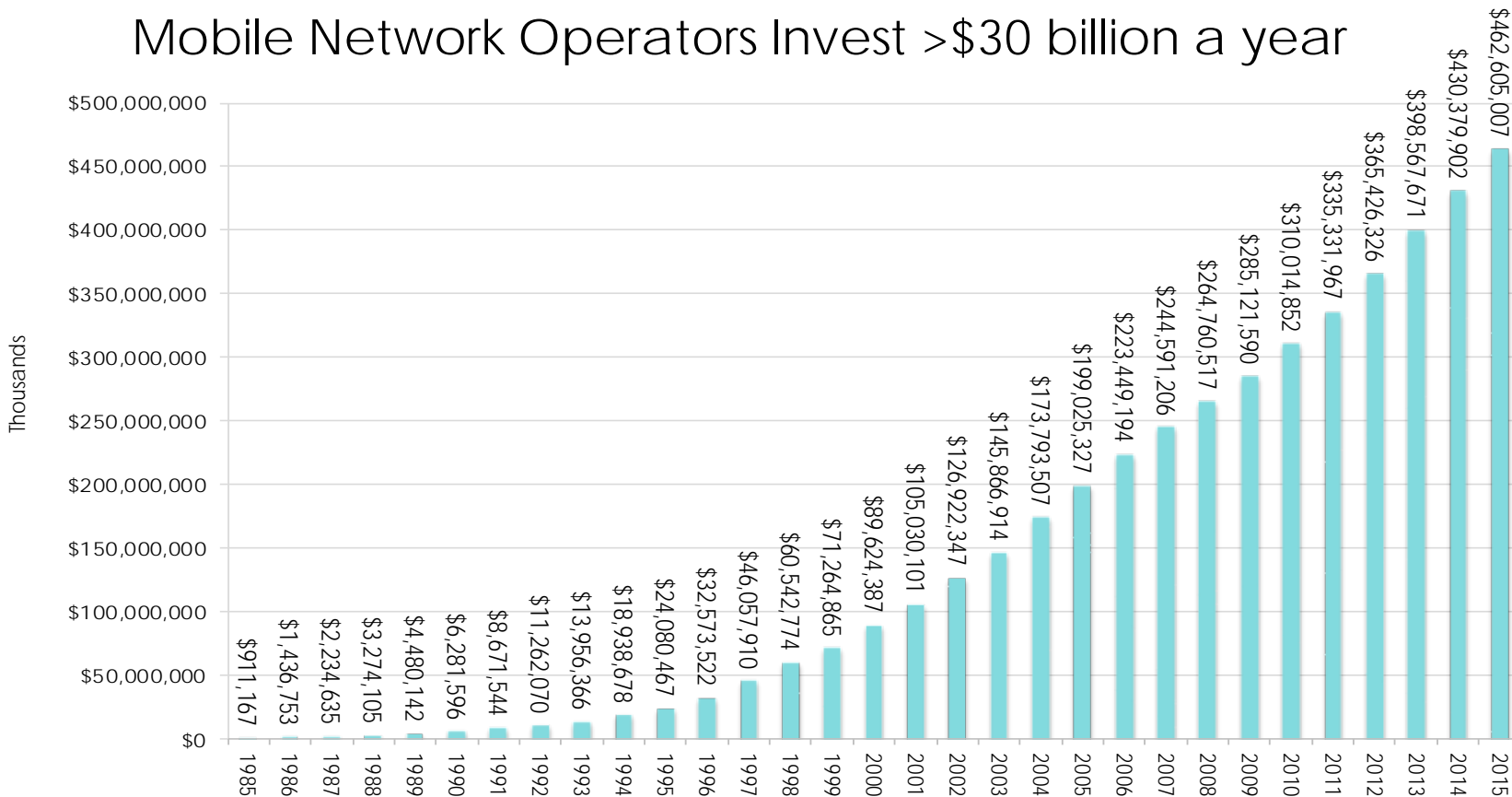
- More advanced devices individually generate more traffic than basic models
- The growing number of advanced devices drives traffic even higher
- Total mobile data traffic in the U.S. in 2020 is expected to be 6 times the volume of mobile data traffic in 2015

	M2M Module	=	7 X		(monthly basic mobile phone data traffic)
	Wearable Device	=	7 X		(monthly basic mobile phone data traffic)
	Smartphone	=	41 X		(monthly basic mobile phone data traffic)
	Tablet	=	113 X		(monthly basic mobile phone data traffic)
	PC	=	118 X		(monthly basic mobile phone data traffic)

* Monthly basic mobile phone data traffic.

Cumulative Wireless Capital Investment

Mobile Network Operators Invest >\$30 billion a year

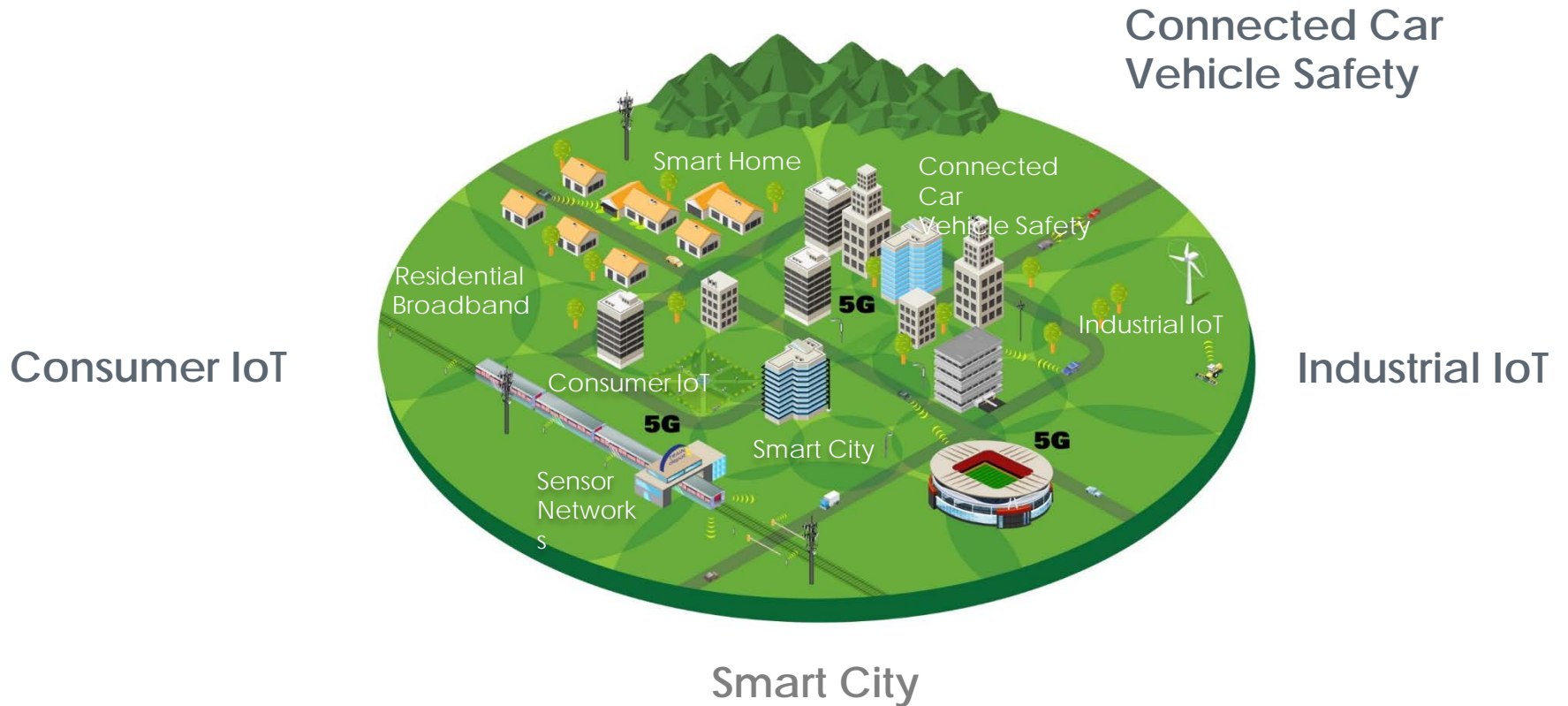


Source: CTIA Wireless Industry Survey

The Future: 5G

<p>5G will be very fast</p>	<p>5G will be everywhere</p>	<p>5G will be real-time</p>
		
<p>Ultra high speed data</p>	<p>Massive IoT</p>	<p>Lower latency/lag time</p>

5G Benefits: The Internet of Things



5G Benefits: Smart Cities



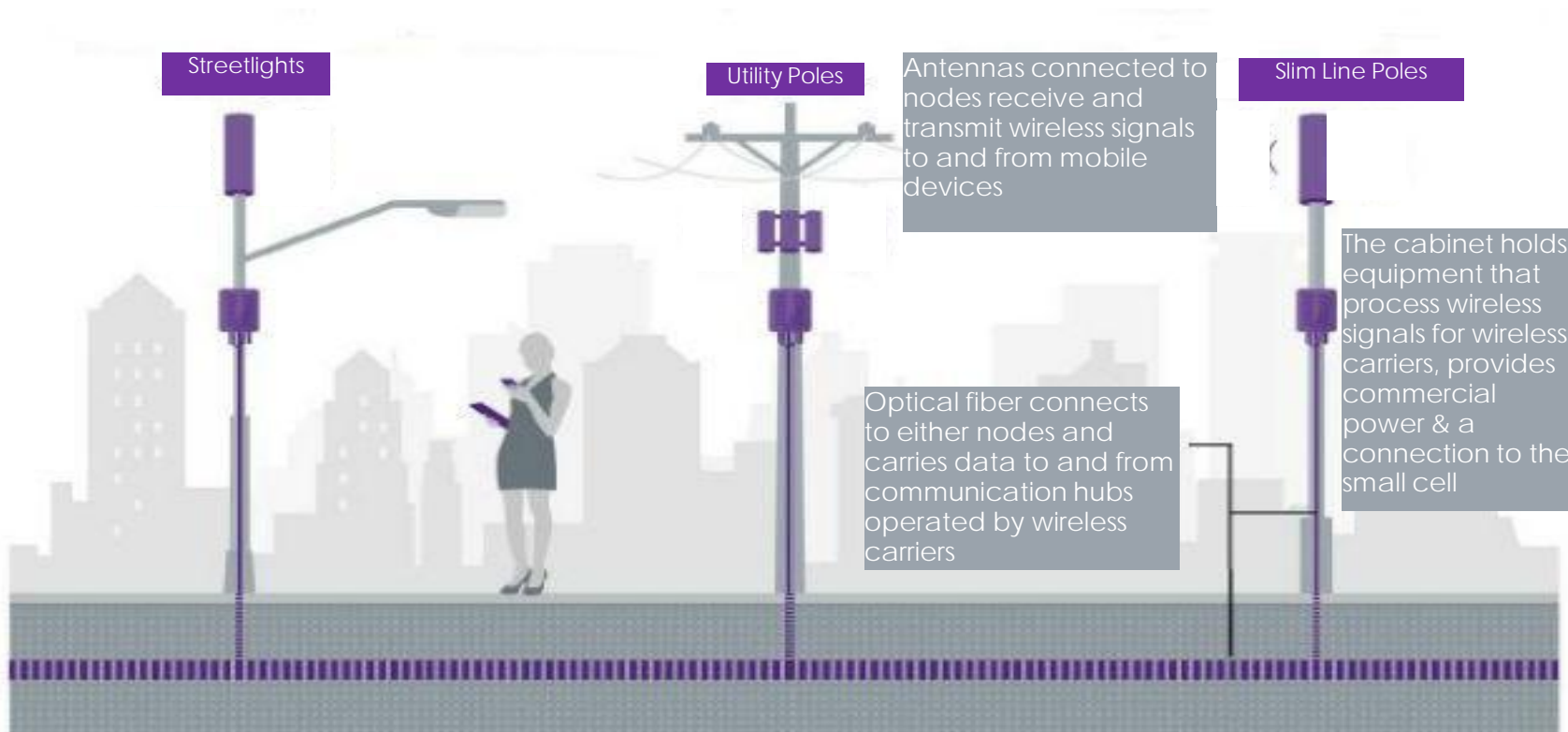
- Infrastructure
- Transportation & Traffic Management
- Public Transportation
- Public Safety

What Is a Small Cell?



- Wireless antennas, typically no more than 6 cubic feet in volume, that can be placed on any existing structure
- Associated equipment, typically with a cumulative volume of less than 30 cubic feet, is also placed at the site

Examples of Small Cells



Source: Crown Castle

For more information...

Gerry Keegan

CTIA

202.736.3238

gkeegan@ctia.org

ctia Everything™
Wireless

