

COUNTY OF LUNA ROAD CONDITIONS

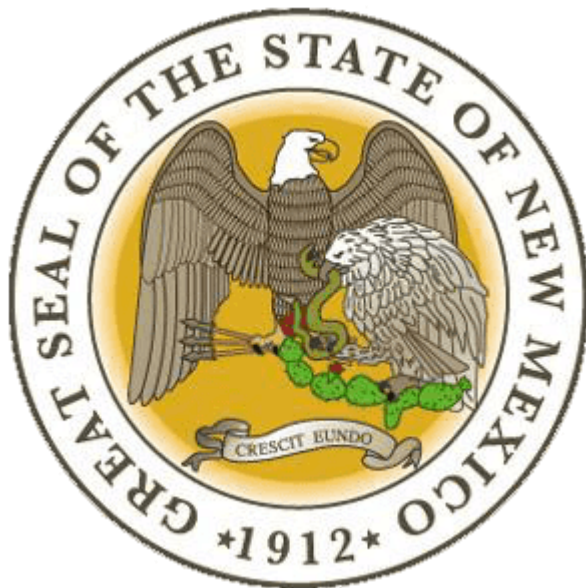
a presentation to the

TRANSPORTATION INFRASTRUCTURE REVENUE SUBCOMMITTEE

July 15, 2016

Room 322, State Capitol

Santa Fe, New Mexico



DETERIORATION OF ROADS



- Luna County maintains 1,886.3 miles of road, 210.5 of which are paved
- Of the paved roads, 18.5 miles see heavy agricultural traffic, and another 18.6 miles see heavy traffic from the Border Patrol, state park visitors and trucks hauling trash to the landfill, which is about 17 miles outside of Deming due to state mandates
- About 89 miles of county roads are former state roads with narrow lanes that still see heavy agricultural traffic
- Most county maintained roads are rated for 60,000 pounds, but much of the heavy truck traffic exceeds 80,000 pounds and sometimes over 100,000 pounds
- New county road construction aims for 80,000 pound rating
- Agriculture production leads to many overloaded trucks, but the increased weight limits along the border with Mexico and the 24/7 hours of the Columbus Port of Entry also ensures steady commercial traffic, oftentimes with trucks loaded above the capacity of county roads

Country Club Road—2.75 miles; part of commercial truck bypass and industrial park area. Crack shown is from repair approximately five years ago



Solana Road is a former state highway and is approximately 6 miles long. Its travel lanes are 9 feet wide, instead of the recommended 10.5 feet. It sees heavy agricultural use, with tractor and semi tires causing shoulder damage

MAINTAIN VS. NEW



At left, Rockhound Road, which is part of the existing commercial truck bypass, is an example of the standards to which the Luna County Road Department would like to build new projects. Finished in 2015, it is rated for 80,000 pounds.

Below, a section of Country Club Road near farmland and a rock quarry shows the effects of heavy traffic over patching. The road is patched on a regular basis, with the last major maintenance project taking place five years ago. It is also part of the commercial truck bypass.



TRUCK WEAR AND TEAR



At the top, a truck loaded nearly 120,000 pounds of onions (estimated using the number of full boxes) is shown travelling Hermanas Road, which was built in the 1950s and is rated for 60,000 pounds. In the bottom photo, Road Department Director Marty Miller shows the bow in the road caused by heavy traffic from overloaded trucks.

WEAR AND TEAR CONTINUED...

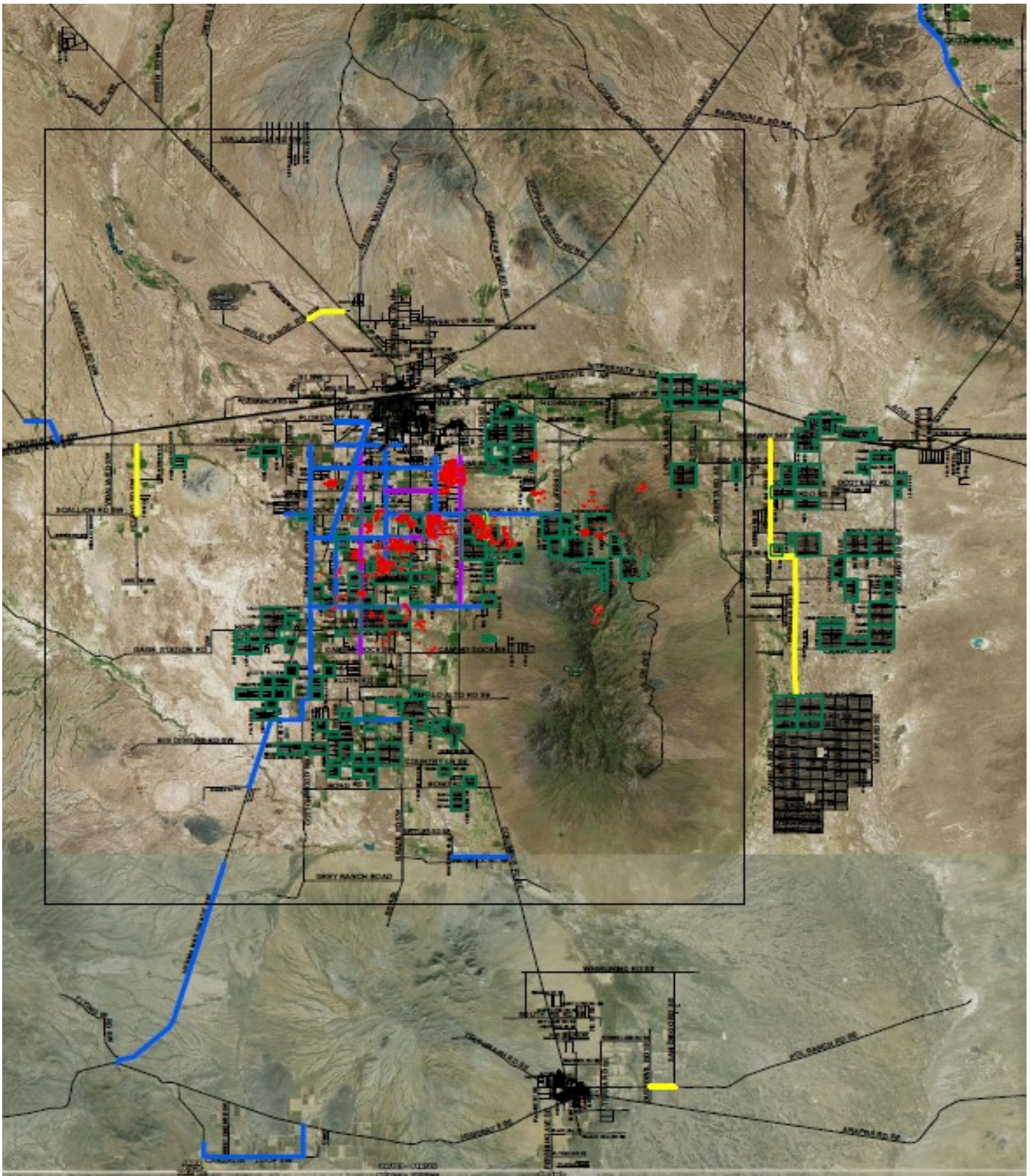


Pictured at left is a semi hauling an onion load estimated to be at least 90,000 pounds. It is traveling on Solana Road, which is plagued with pot-holes, shoulder issues and a rating of 60,000 pounds.

Below, a broom is again used to demonstrate the bow in the road caused by heavy traffic. This is the same section shown at left.



SCALE OF THE PROBLEM



Blue — 89.5 miles — Old, narrow state road with heavy agricultural use

Yellow — 18.7 miles — Heavy Border Patrol use, state park use, and agricultural use

Purple — 18.5 miles — Heavy agricultural use