

Transportation Infrastructure Revenue Subcommittee

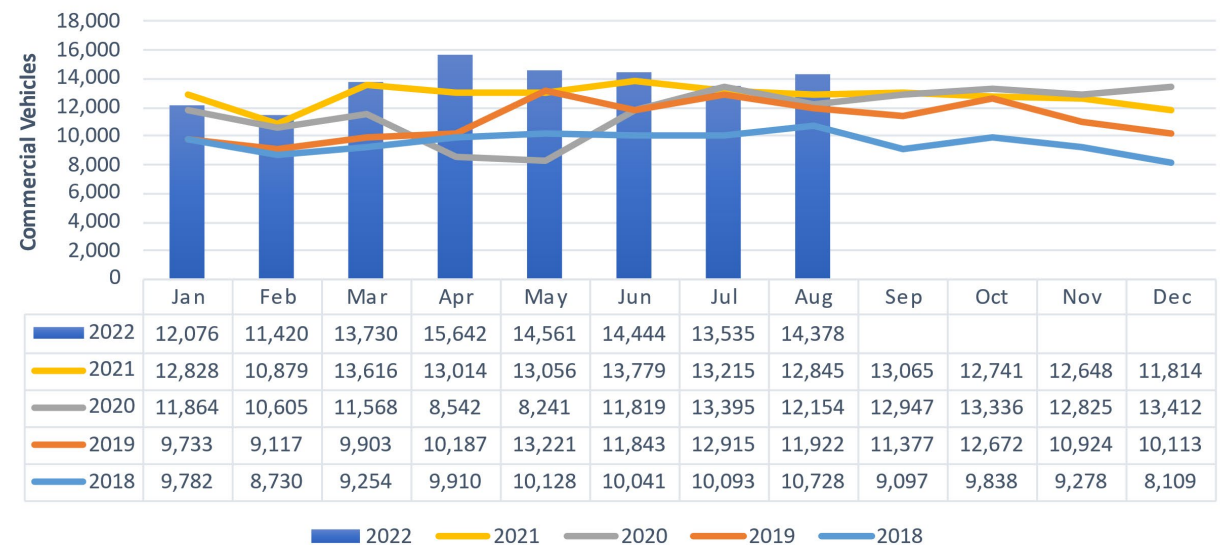
Marco Grajeda
Executive Director
New Mexico Border Authority
October 3, 2022

Border Statistics

Santa Teresa Commercial Vehicle Update

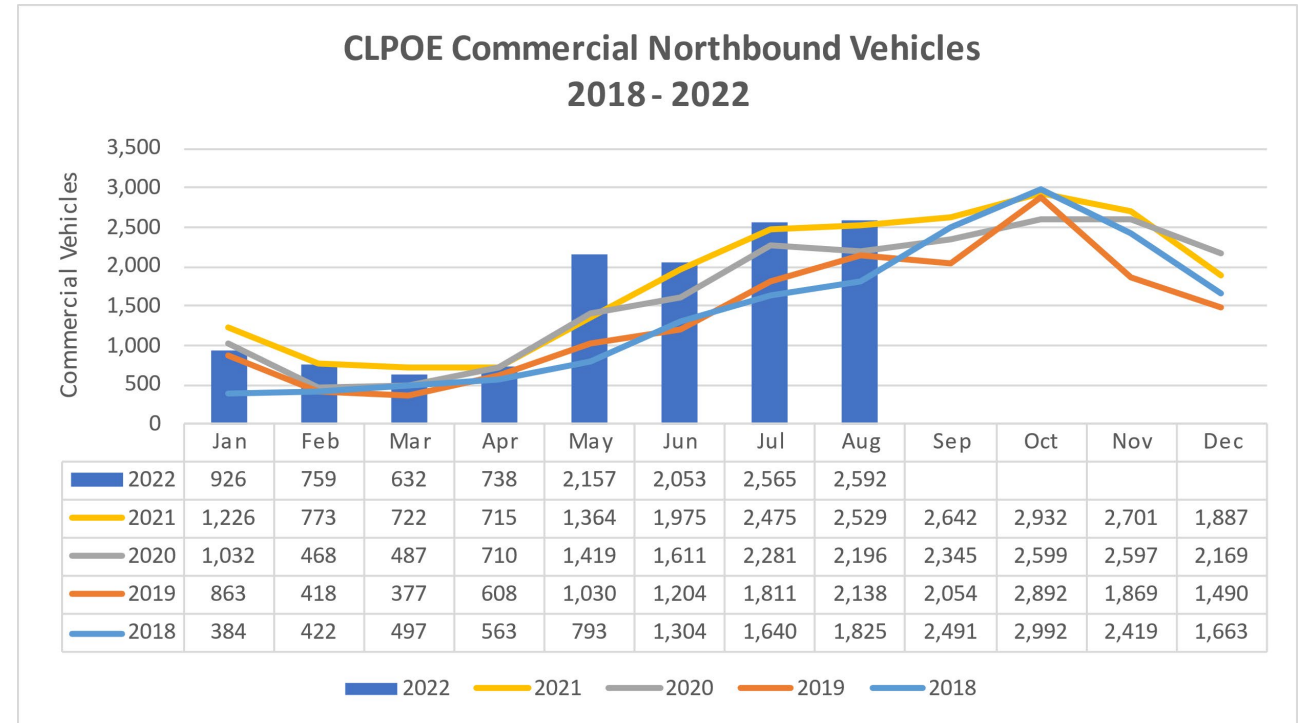
- STPOE has already surpassed last year's commercial crossings
- Currently processing 650 trucks/day vs 350 in 2019.
- STPOE served a critical function in April when Texas Gov. Greg Abbott implemented enhanced port screenings.
- Current average wait times:
 - 0 to 40 minutes.

STPOE Commercial Northbound Vehicles
2018 - 2022



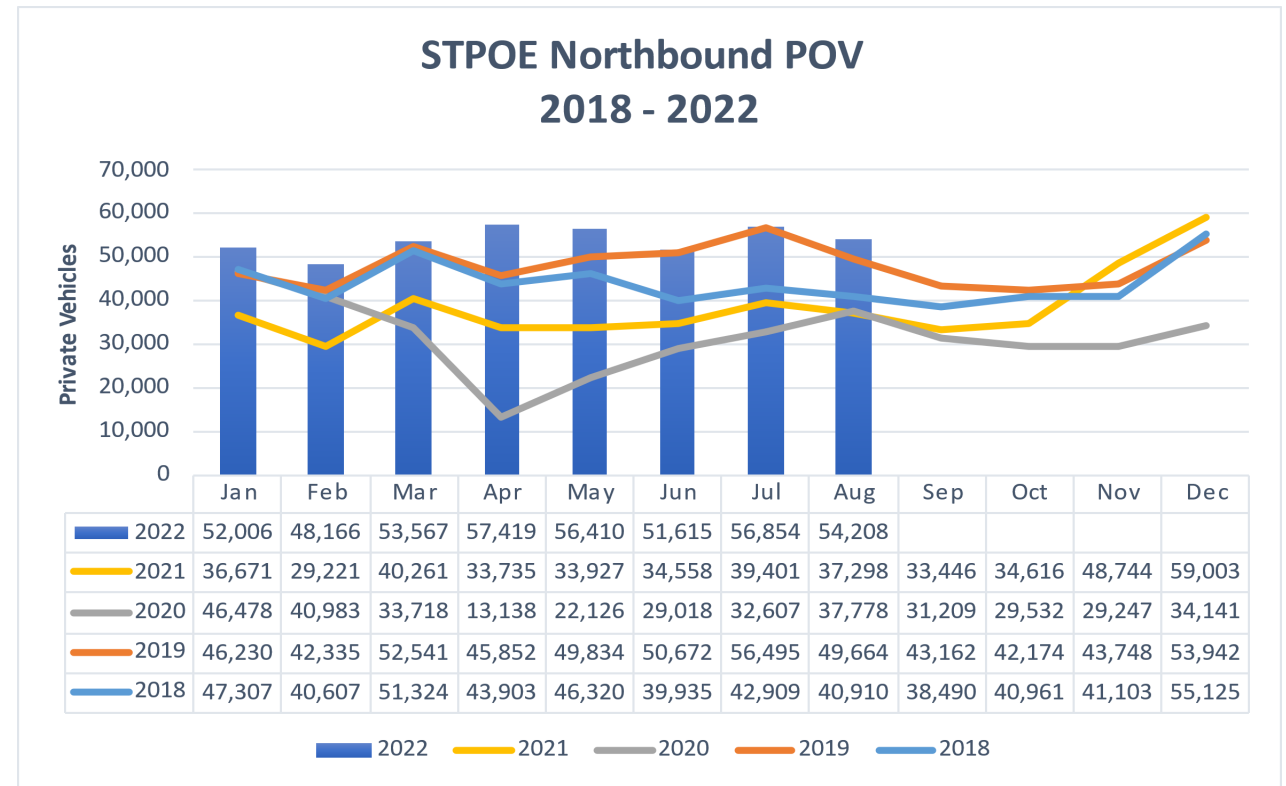
Columbus POE Commercial Vehicle Update

- Alfalfa has topped chile as the number one commodity in Columbus.
- The POE has already topped last fiscal year's total commercial importations.
- Chile season is underway and peaks this time of year. CBP brought additional ag specialists to process the increase during peak season.
- Currently, the port is averaging 140 trucks per day.



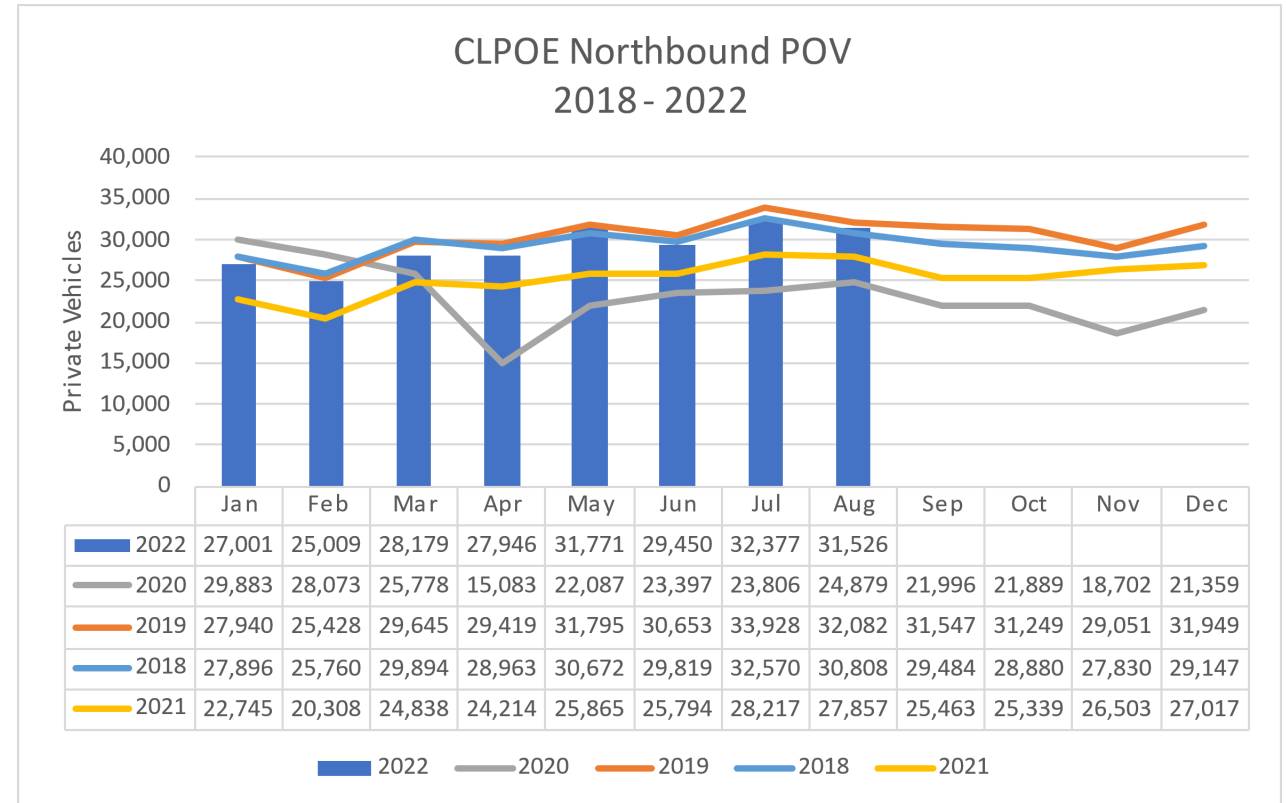
Santa Teresa POE Private Vehicle Update

- POV traffic already topped last year's total.
- Last fiscal year, the port processed 411,438 private vehicles—this FY they expect to top 620,000.
- STPOE is currently averaging more than 1,900 vehicles a day.
- Average POV wait times:
 - 45 mins to an hour.



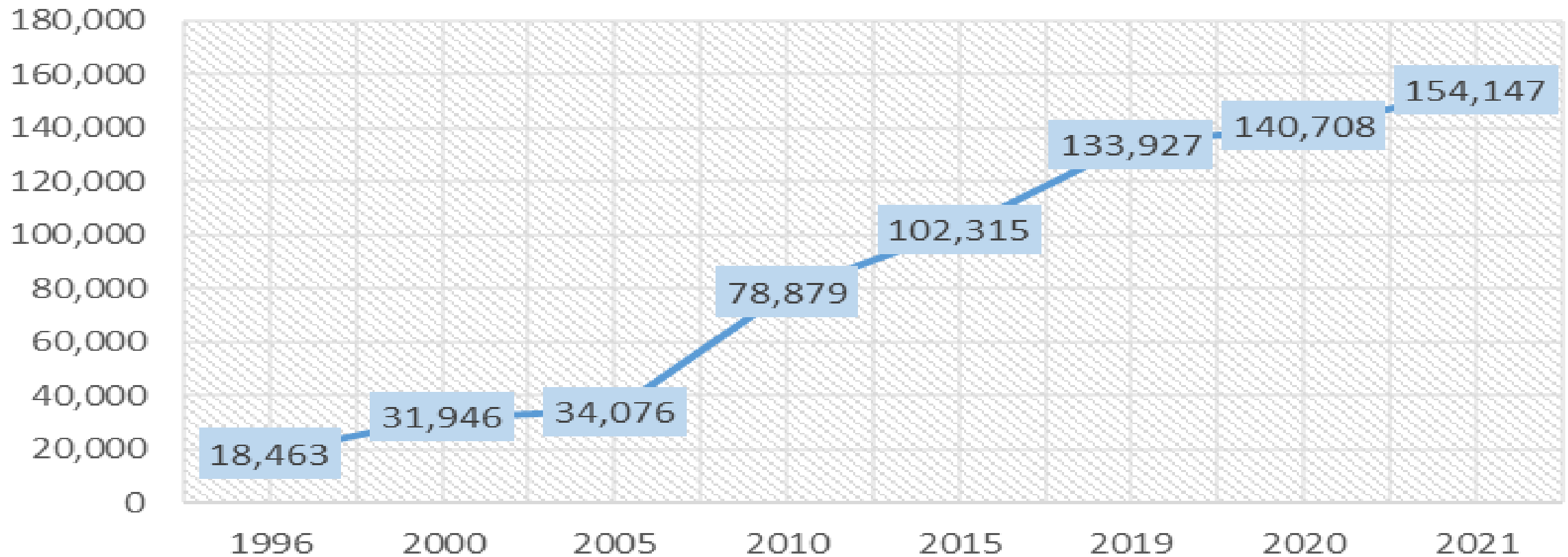
Columbus POE Private Vehicle Update

- POV traffic and pedestrian traffic has already surpassed last year's numbers, the pandemic restrictions were eased.
- Average wait times for private vehicle travelers:
 - Under 30 minutes.

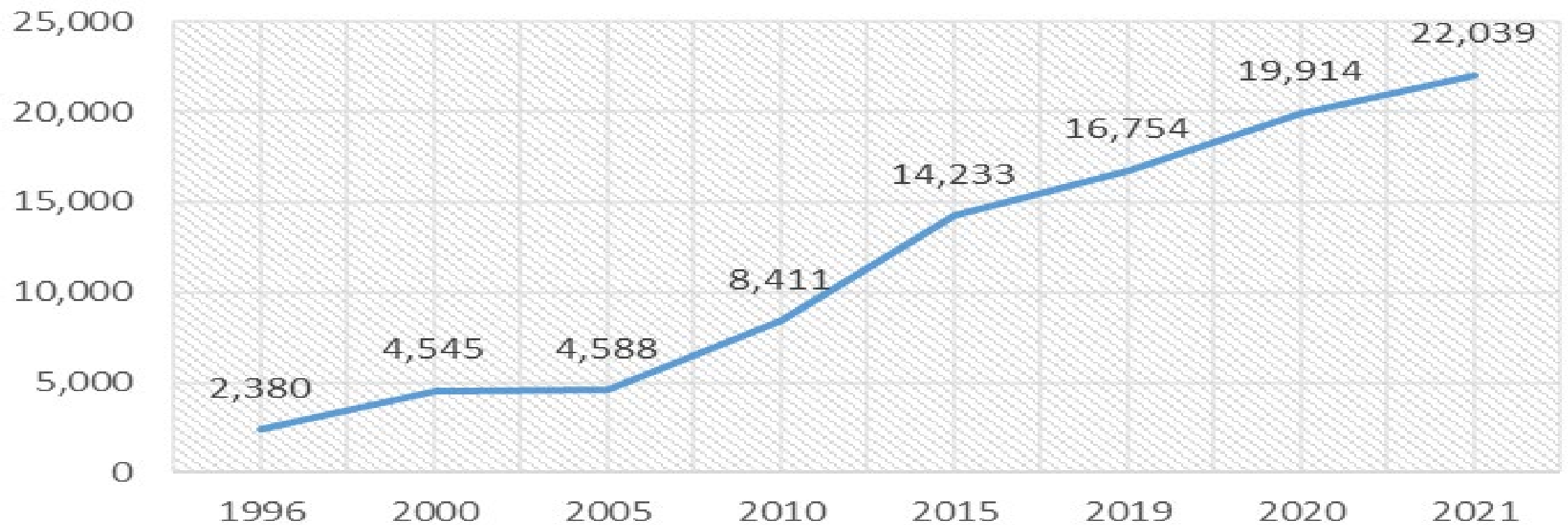


Santa Teresa POE

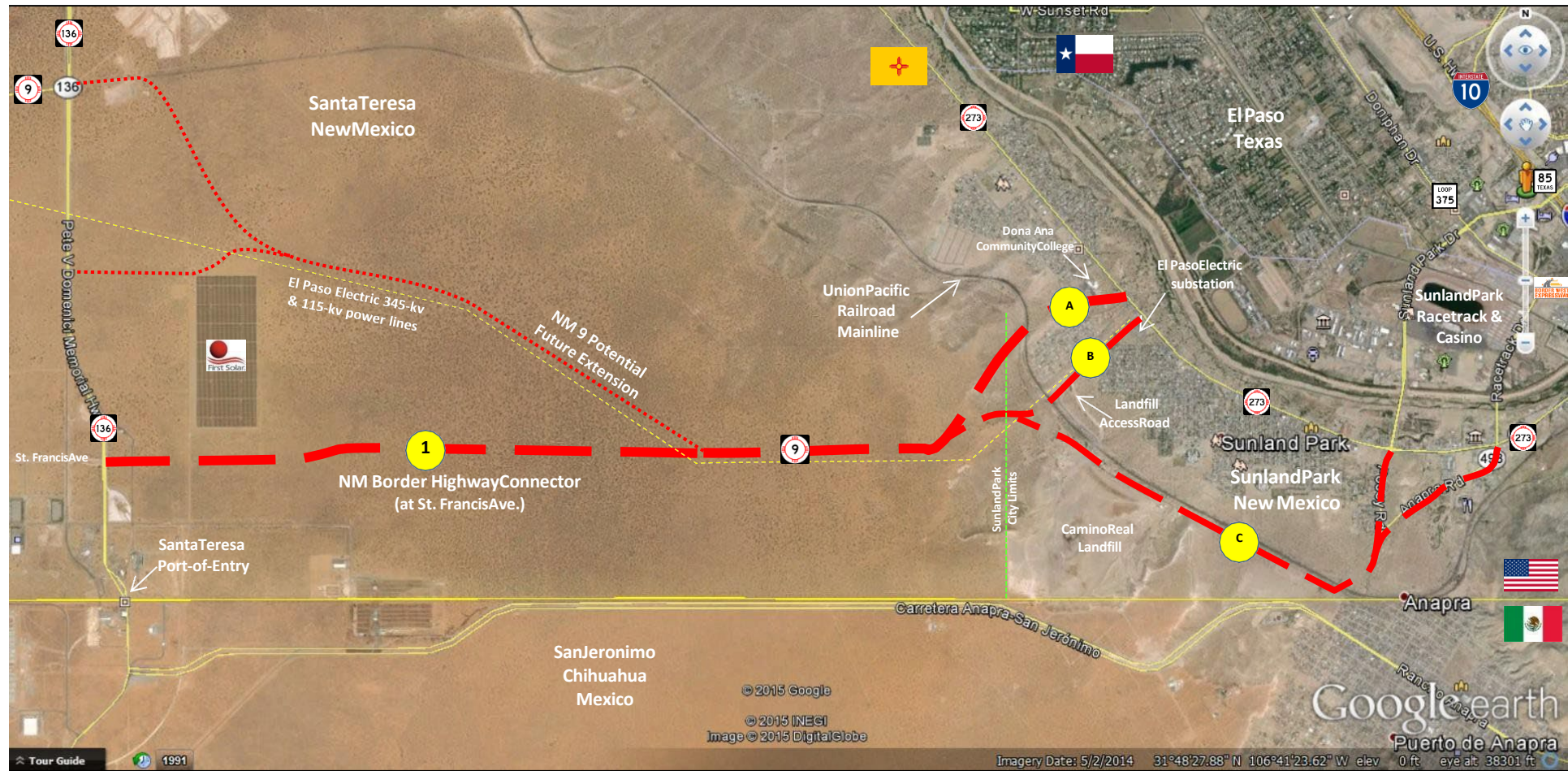
Annual Truck Border Crossing (1996 - 2021)



Columbus POE Annual Truck Border Crossing (1996 - 2021)



Border Transportation Investments



Border Highway Connector (St. Francis Dr. Extension): fully funded in 2022.

Project Benefits

The new roadway:

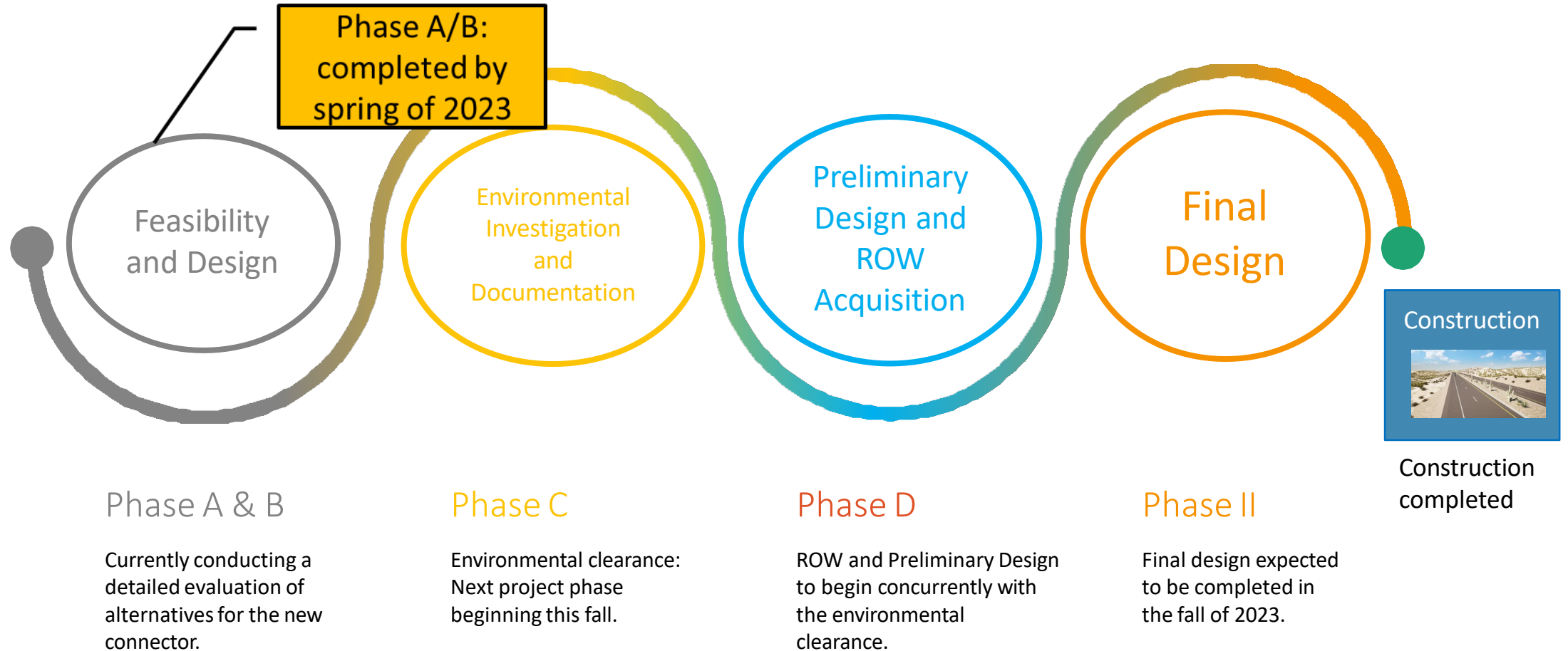
- will significantly reduce drive times to and from the City of El Paso and major highways - Interstate 10 and Loop 375.
- will address congestion at EP/ CDJ ports by attracting increased POV and commercial traffic to the Santa Teresa – San Jerónimo POE.
- creates a comprehensive and efficient transportation network in the region that will support expected economic growth.
- improves connectivity between major ports in southern New Mexico and far west Texas.

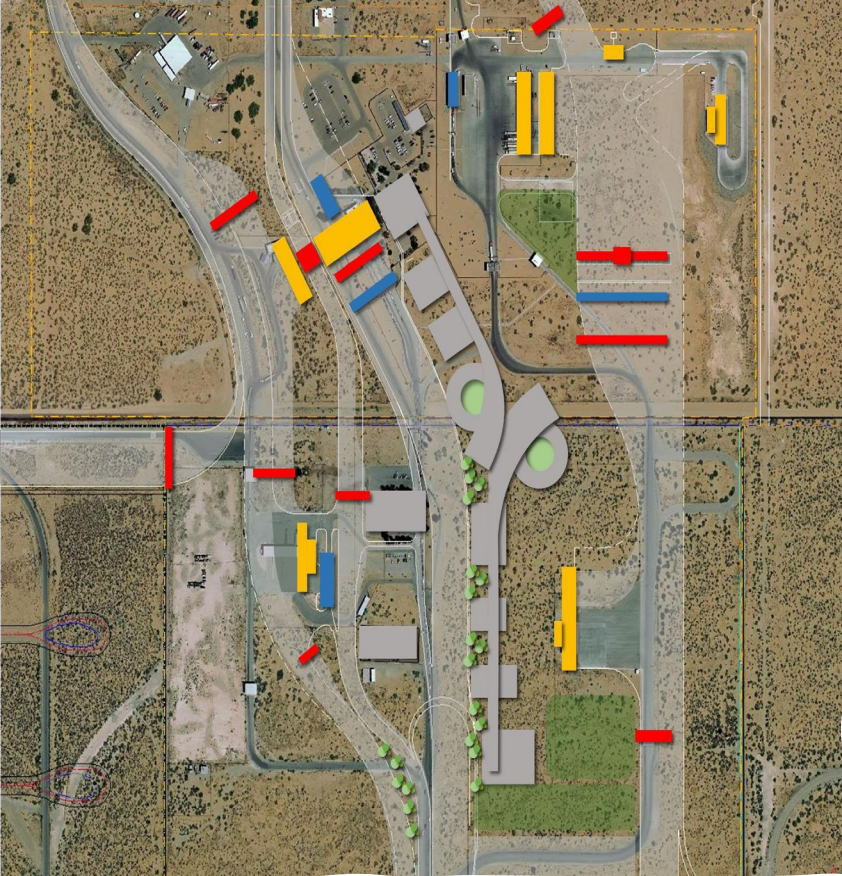
The connector will be owned and maintained by the NM Department of Transportation.



NM Border Highway Connector

Project Roadmap





Santa Teresa Port of Entry

Expansion and modernization

The New Mexico Border Authority secured \$500,000 in Congressionally Directed Spending this year, with support from NM's U.S. Senators, to complete the feasibility of an expansion and modernization of the Santa Teresa POE. This is the first phase of the critical project. The U.S. General Services Administration (GSA) will lead the project.

Port highlights:

- ✓ Santa Teresa is the designated oversized/ overweight port in the region.
- ✓ Commercial wait times range around thirty minutes or less.
- ✓ Designated as a hazardous materials crossing.
- ✓ Ranked 6th in overall trade on the southern border.
- ✓ Home to the largest livestock crossing of its kind in the nation.
- ✓ Processes approximately 50% of NM's worldwide exports.



Current phase: The feasibility is scheduled to begin this fall and conclude early next summer. **Project Manager:** Jeff Chiavetta, U.S. GSA.



Oversize vehicle maneuvering
the inspection area



Oversized vehicles exiting the ST
POE
traveling north and south.

Doña Ana County Jetport Runway Enhancements

The state of New Mexico is investing \$20 million dollars at the DAC international Jetport in Santa Teresa to upgrade the existing runway and allow heavy cargo airplane landings.

The runway Enhancements will allow a regular flow of 737- 800 aircraft, weighing up to 175,000lbs. Currently the weight capacity is 138,000lbs.

Project timeframe: fully designed by the fall/ winter of 2022 and constructed in approximately two years.

- ❖ **New runway:** the state and county are also planning the construction of a new runway at the Jetport that will allow heavier aircraft up to 747 and 777.

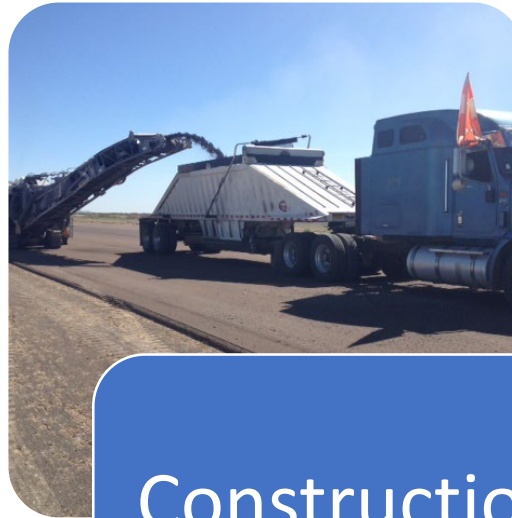


DAC International Jetport enhancements

Early project map



Planning and
Design
Timeframe:
One year



Construction
Timeframe:
Two years



Pursue
Federal
Funding for
new runway

DAC Jetport: Secures first major tenant

Burrell Aviation Doña Ana, LLC. signed a lease agreement with DAC. Burrell plans to construct a new air cargo handling facility, cold storage, distribution center and aircraft maintenance hangars at the International Jetport.

The planned upgrades funded by the state helped to secure the investment. The contract requires the accommodation of larger, heavier cargo up to 737-700 series.

Lease agreement payment to the county:
\$372,860 per year

