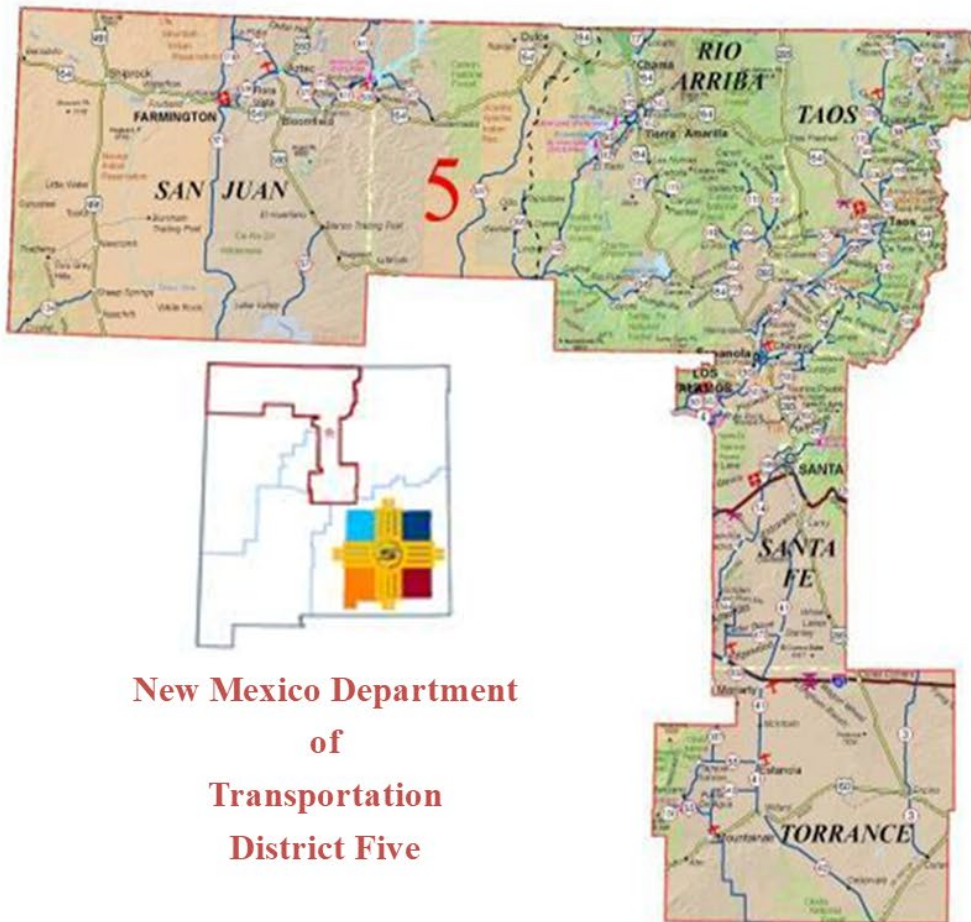




NMDOT DISTRICT FIVE OCTOBER, 2021

District Five encompasses San Juan, Rio Arriba, Taos, Santa Fe, Torrance, and Los Alamos Counties, with District Five Headquarters located in Santa Fe. District Five is responsible for maintaining approximately 5,375 lane miles of roadway. The District also works closely with ten tribal governments and seventeen local governmental entities to meet our transportation goals.



New Mexico Department
of
Transportation
District Five



Tom Taylor
District Five Commissioner



Paul Brasher, P.E.
District Five Engineer



NMDOT – DISTRICT 5

RURAL ROUTES IN AREAS OF ENERGY PRODUCTION

Rural routes: roads connecting population centers, passing through agricultural, open range, or forested lands, and serving low average daily traffic. NHS and State routes in District 5 are primarily rural.

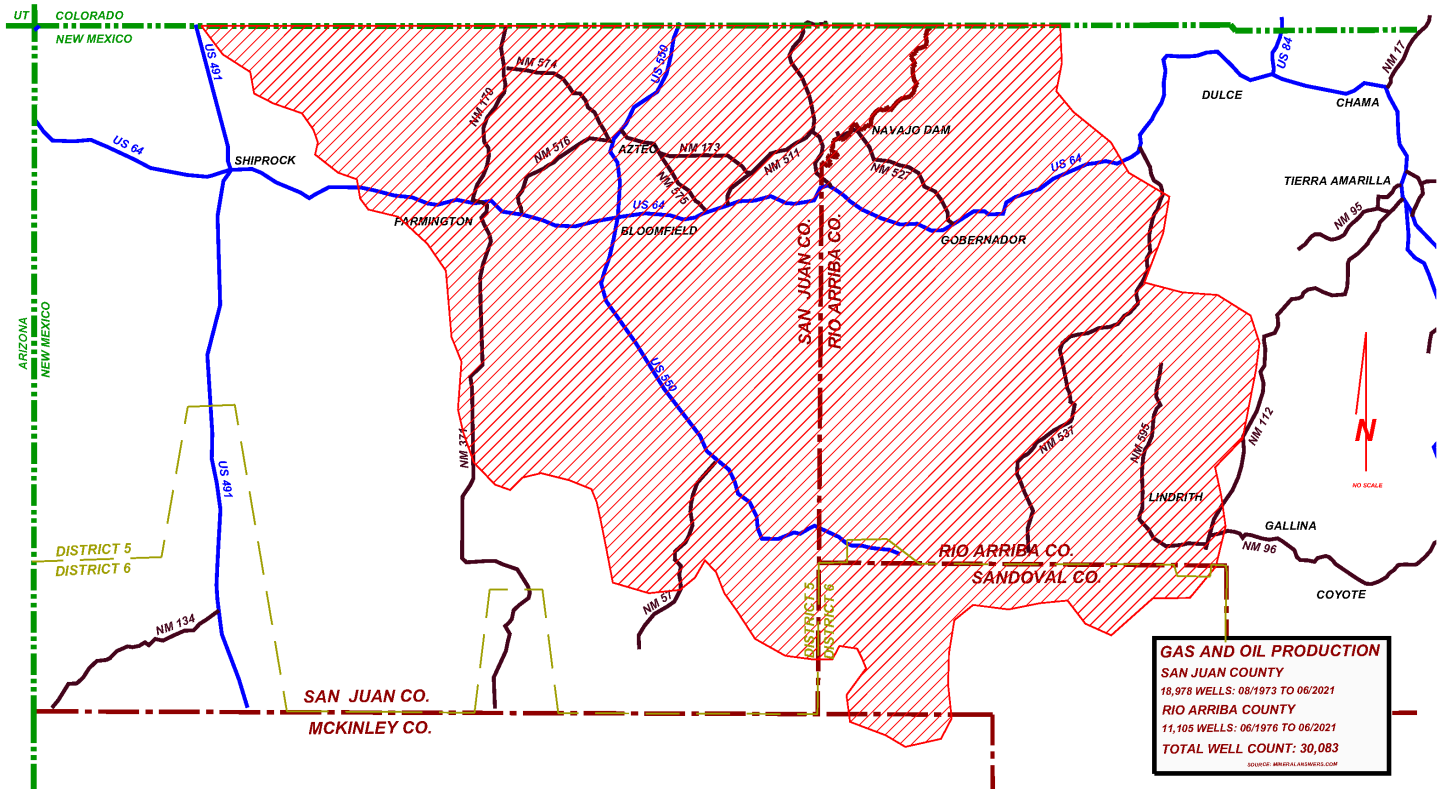
Energy production in District 5:

Statistics

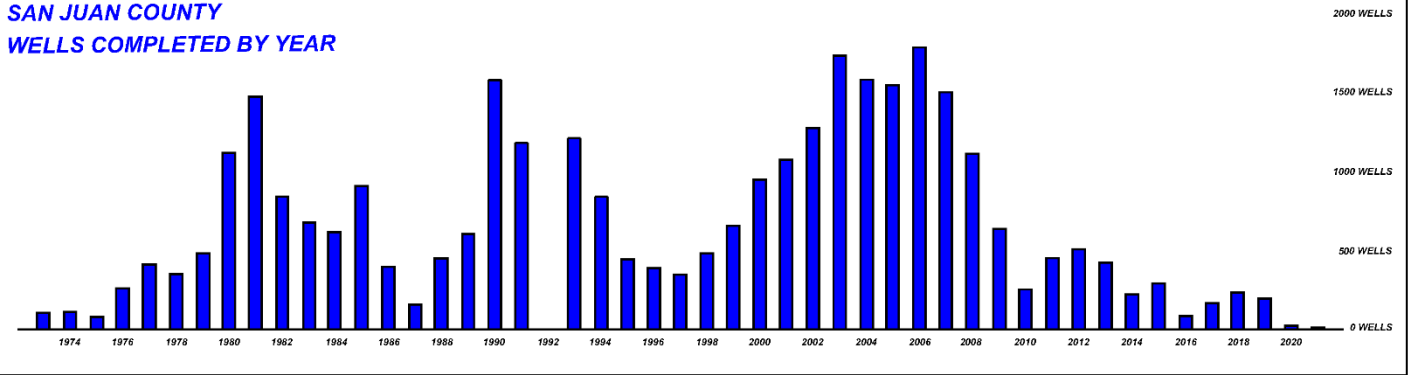
- San Juan County – Oil and gas, 18,978 wells completed between August, 1973 and June, 2021; peaked in early 2000's
- Rio Arriba County – Oil and gas, 11,105 wells completed between June, 1976 and June, 2021; peaked in early 2000's
- Torrance County – Wind generation, 531 turbines with installed generation of 700 MW

Issues

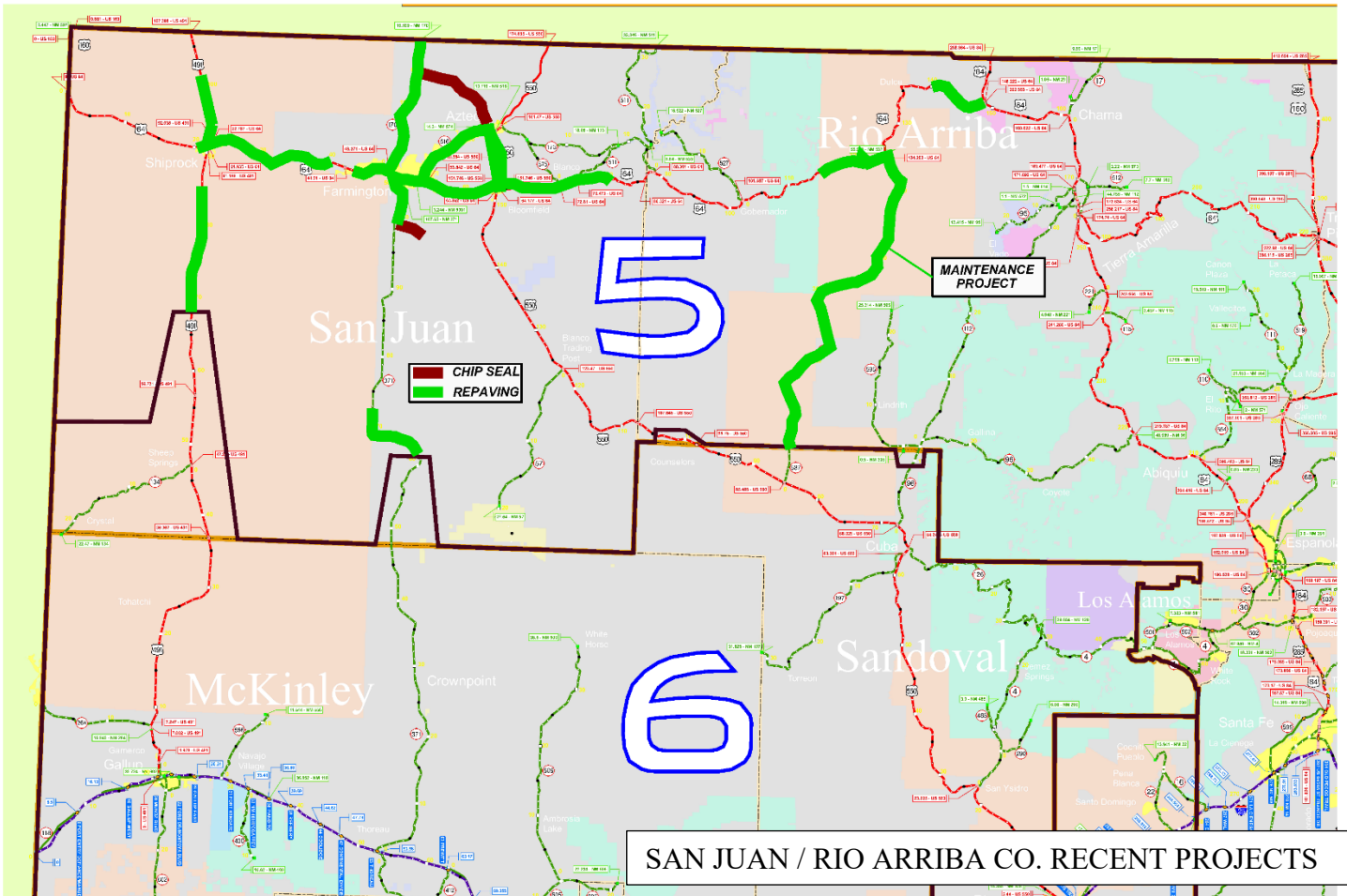
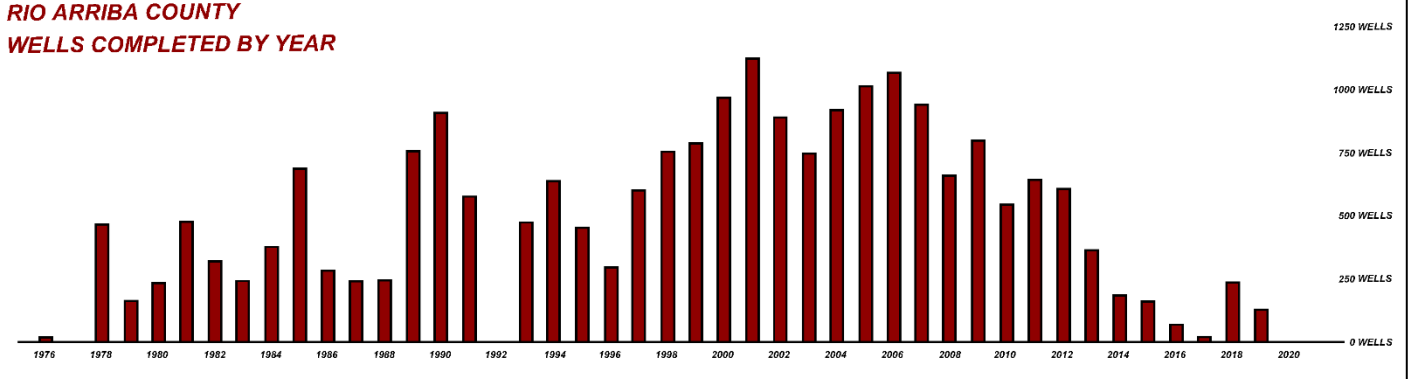
- Well permits and completions have declined significantly in number
- Wind turbines are still under construction
- Accelerated pavement deterioration arising from heavy equipment (high ESAL count) on District roads and bridges during well drilling and completion
- Accelerated pavement deterioration arising from high traffic volume of wind turbine construction transport on State routes with weak pavement structure
- NM 170 between Farmington and the Colorado State line is conveying a high volume of mining traffic originating in Colorado
- District STIP and maintenance efforts have been focused on rehabilitation of pavement accelerated in deterioration
- Forthcoming expiration of the US 550 maintenance warranty will increase the burden of pavement maintenance and divert resources from other efforts in the District

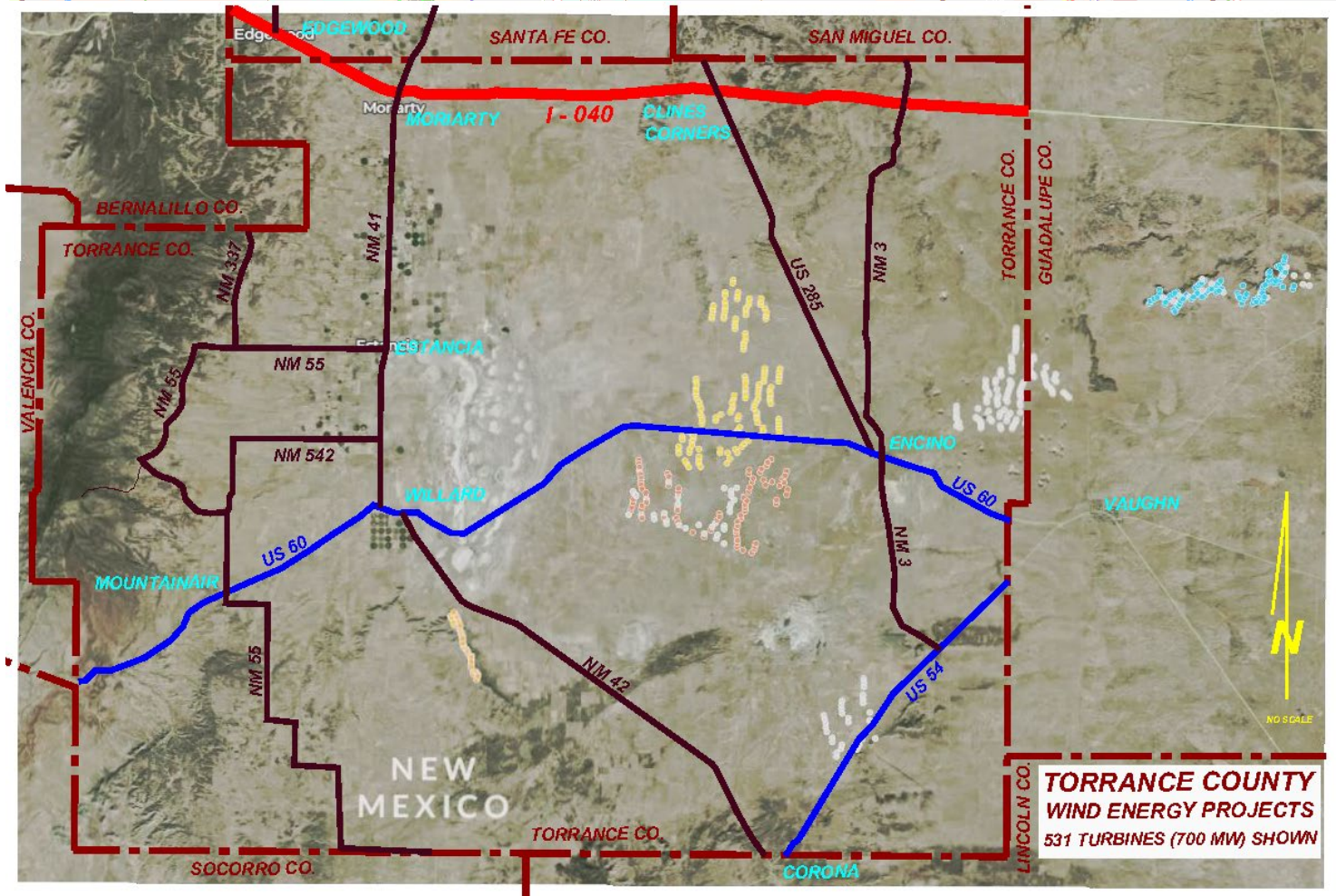
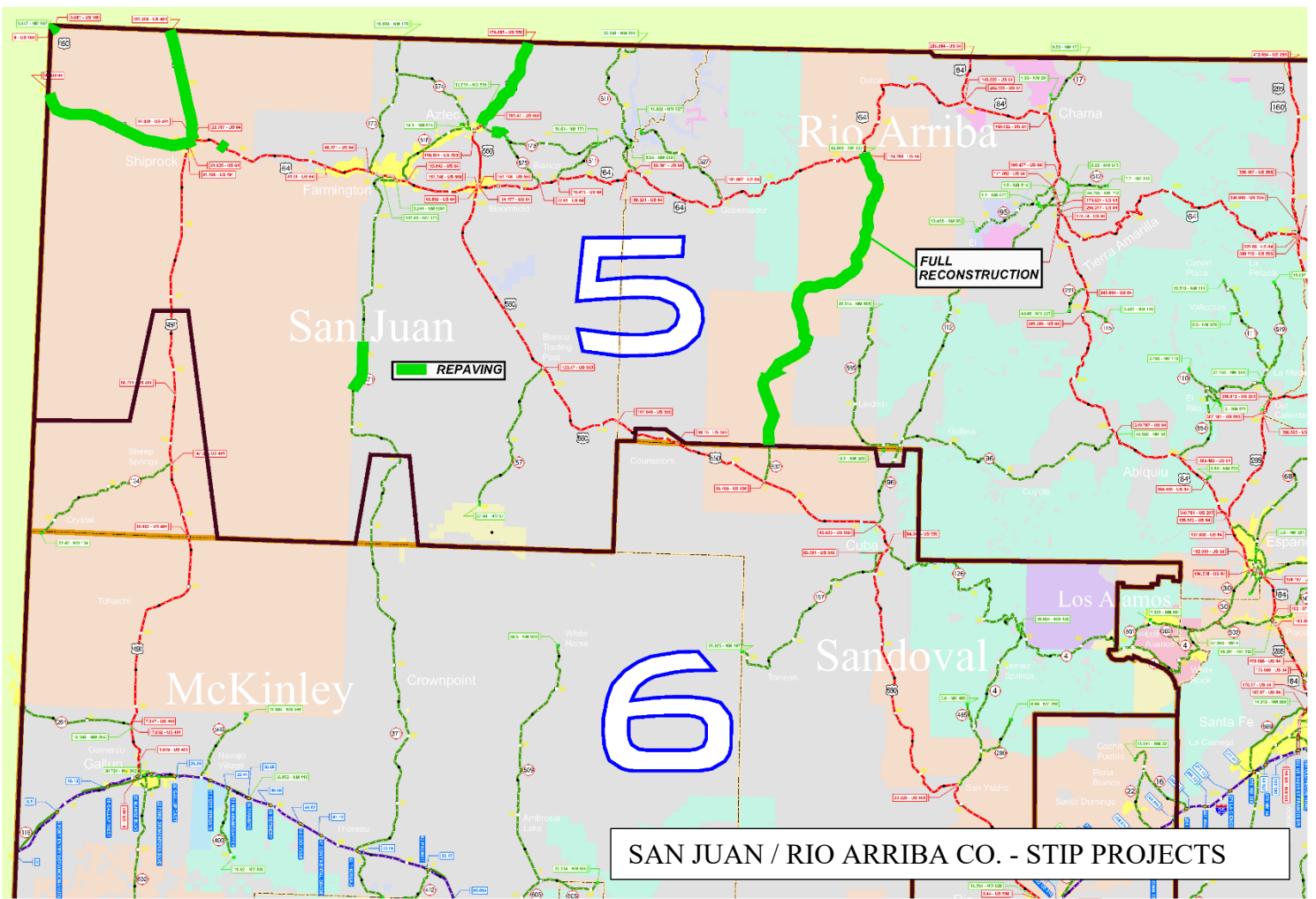


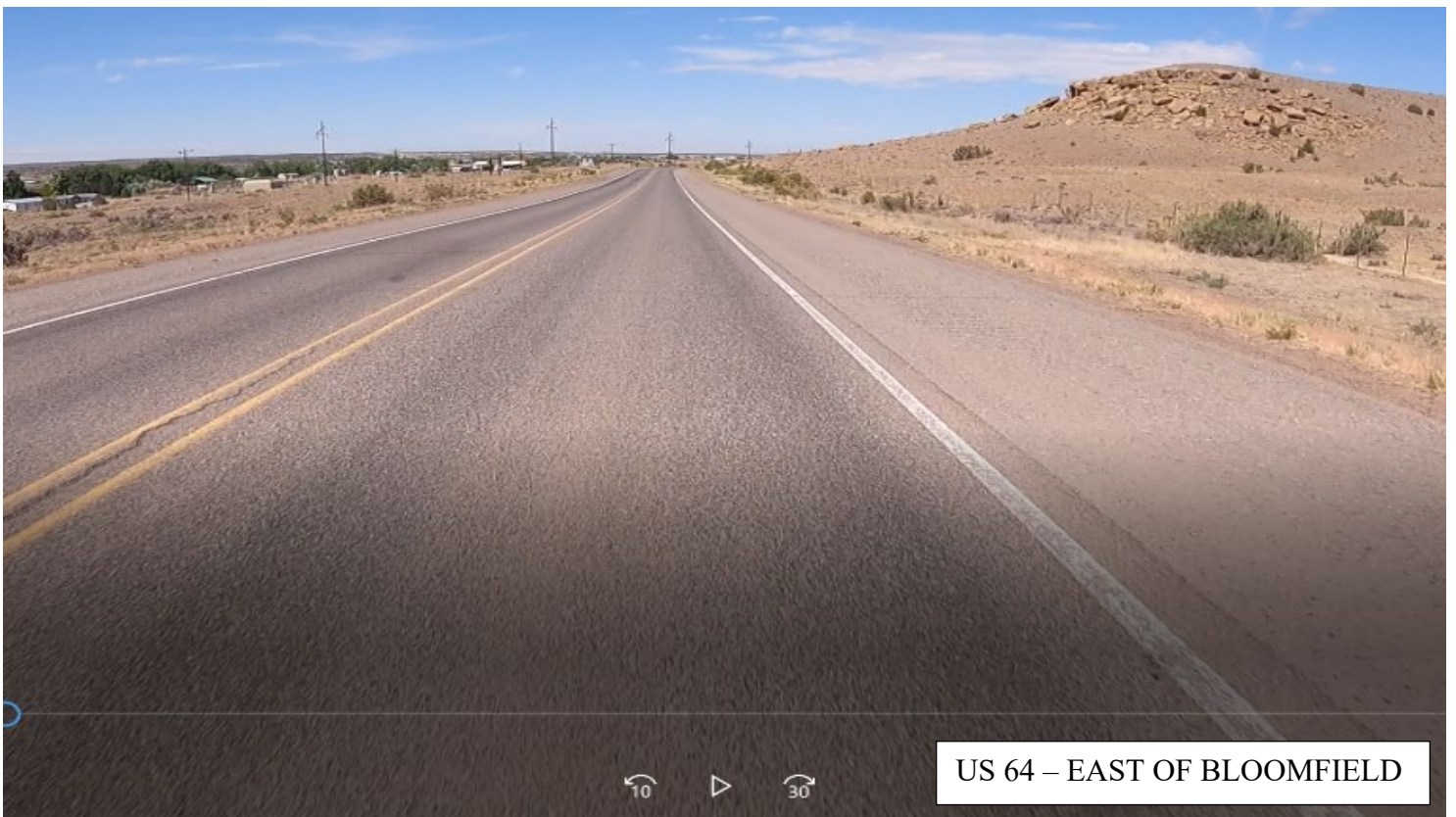
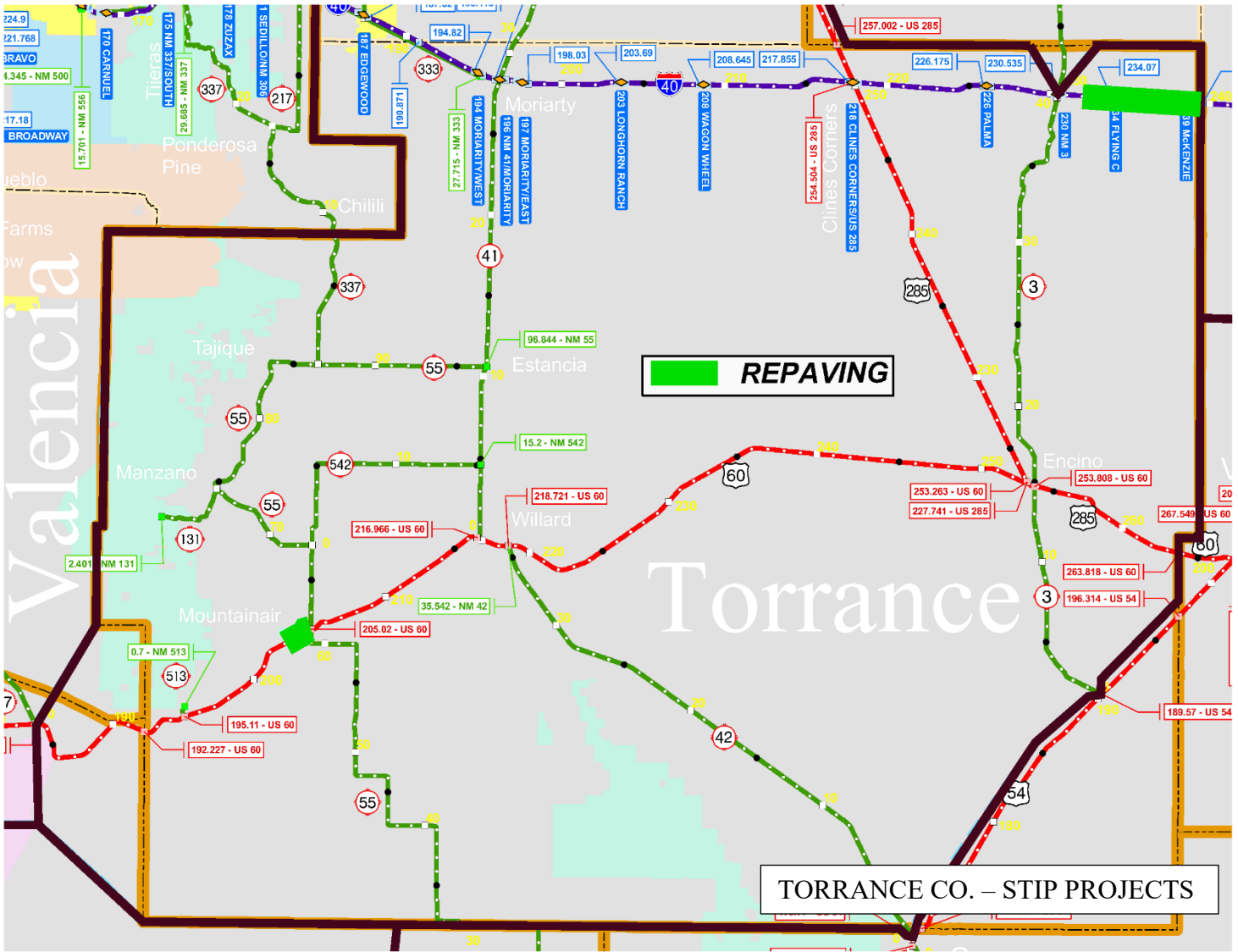
**SAN JUAN COUNTY
WELLS COMPLETED BY YEAR**

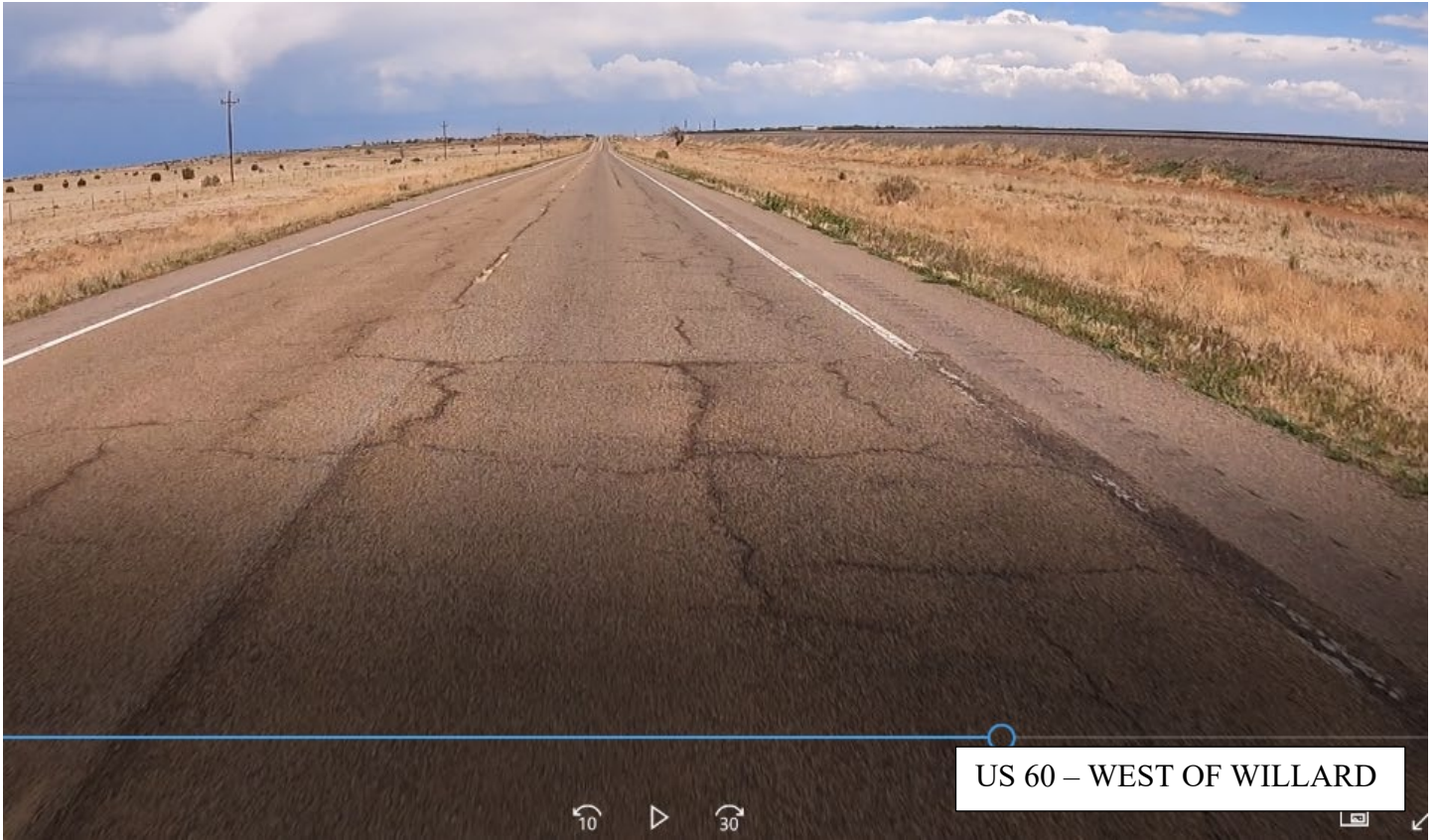


**RIO ARRIBA COUNTY
WELLS COMPLETED BY YEAR**

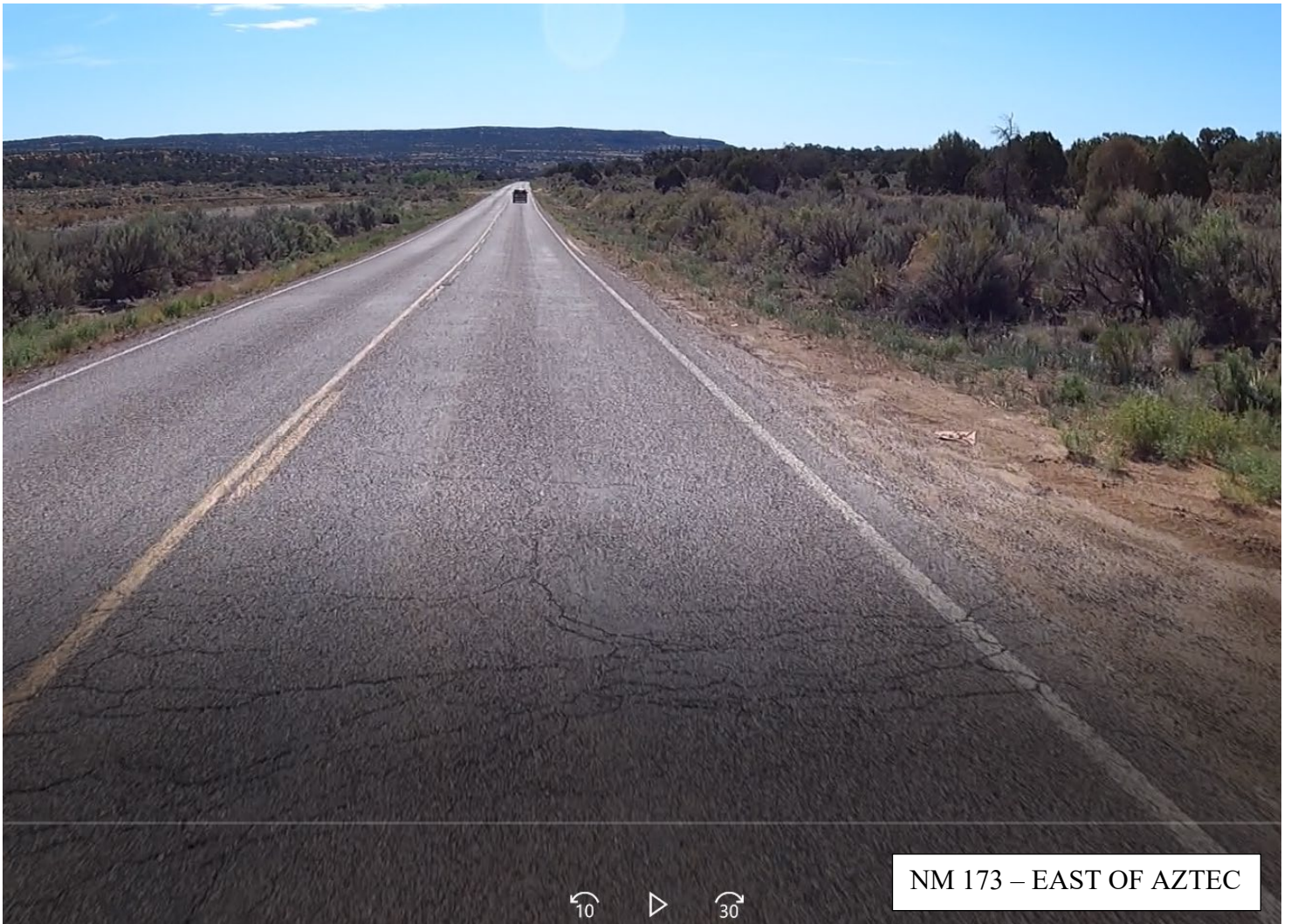
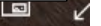








US 60 – WEST OF WILLARD



NM 173 – EAST OF AZTEC







NM 96 BRIDGE