

New Mexico Border Authority

**Transportation Infrastructure Revenue
Subcommittee**

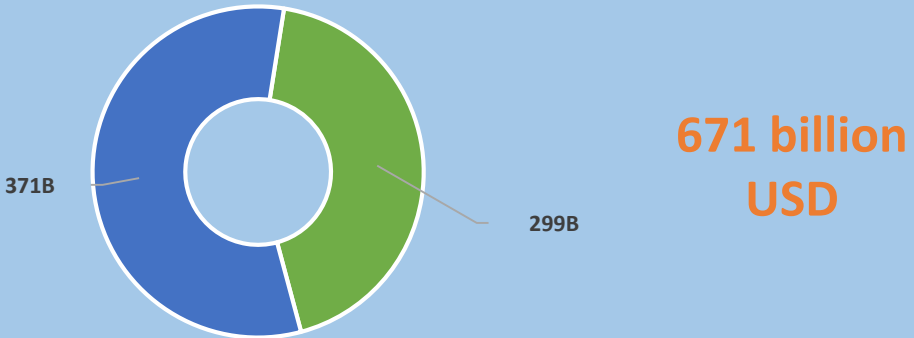
November 5, 2019

Trade Overview

- In 2018, New Mexico exported 3.4 Billion
 - State's largest market: Mexico (1.4B or 39%)
 - Las Cruces MSA led the state with \$ 1.4 Billion Exports
- Top Export Sectors:
 - Computer & Electronic
 - Manufactured Commodities
 - Transportation Equipment
 - Fabricated Metal Products
- Of note:
 - 54% of cattle cross through New Mexico ports
 - Exports supported 15K jobs in 2016

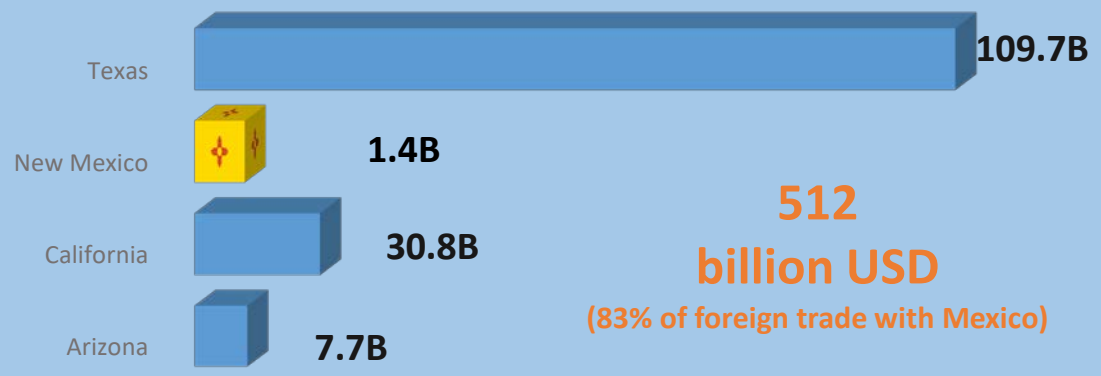
Mexico-USA border overview (2018)

Foreign Trade Mex-USA



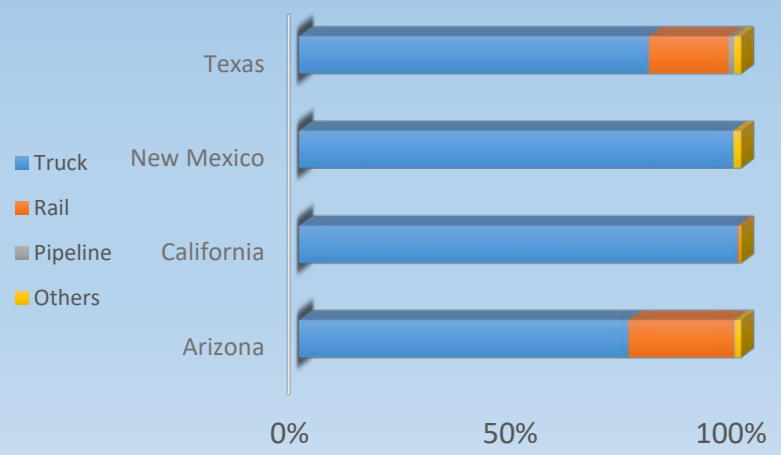
Source: USTR.gov

Trade with Mexico

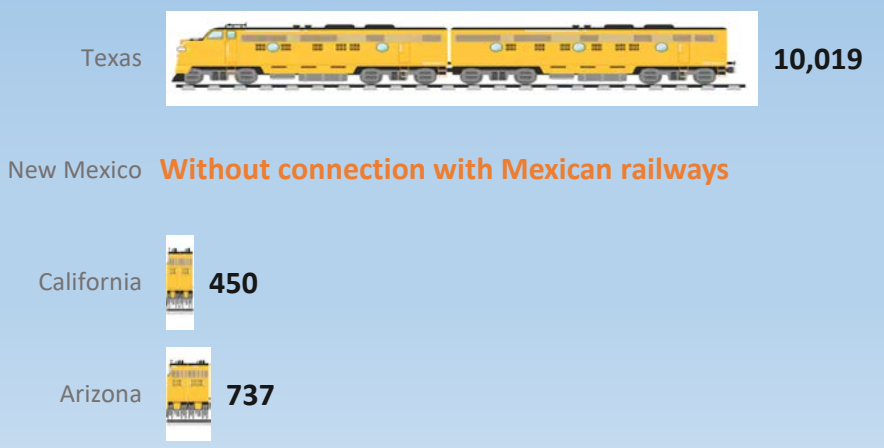


Source: ustr.gov

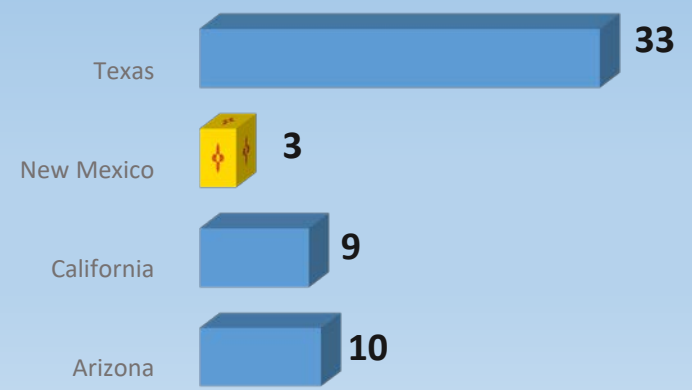
Trade by transportation mode



Annual trains northbound

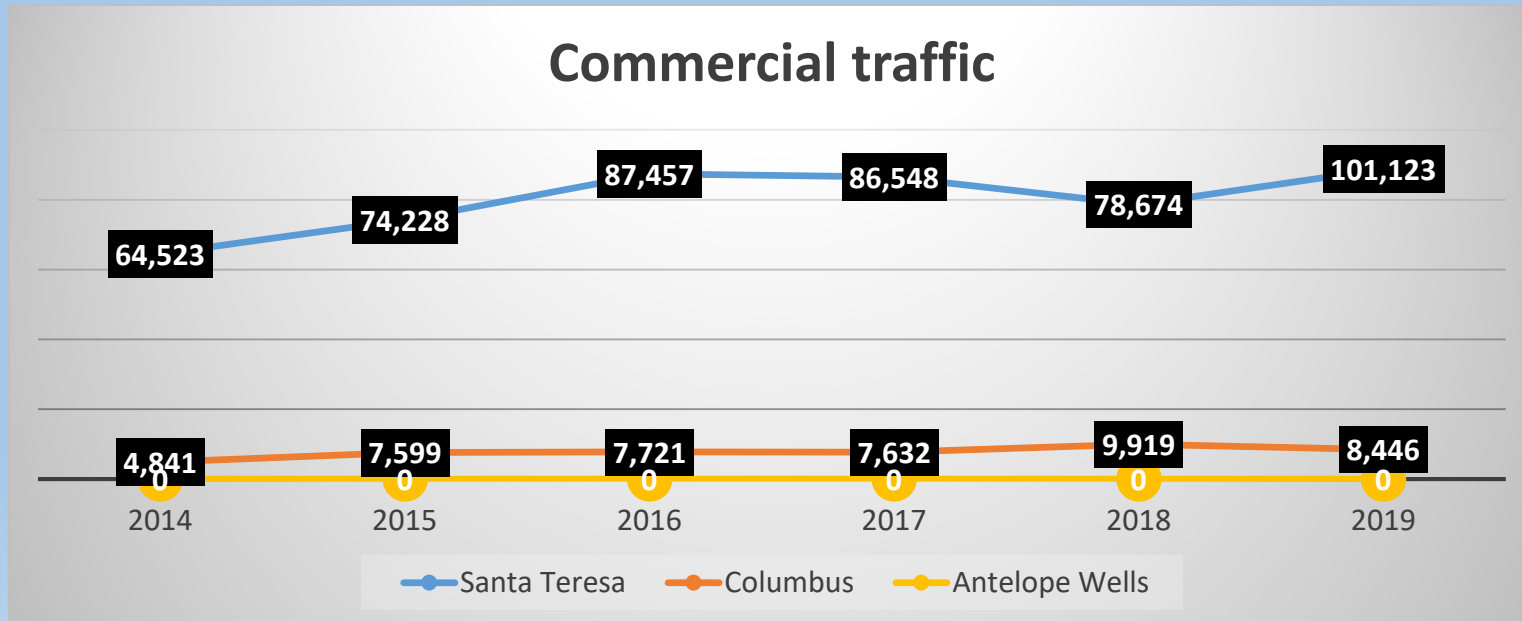


PoE along Southern border



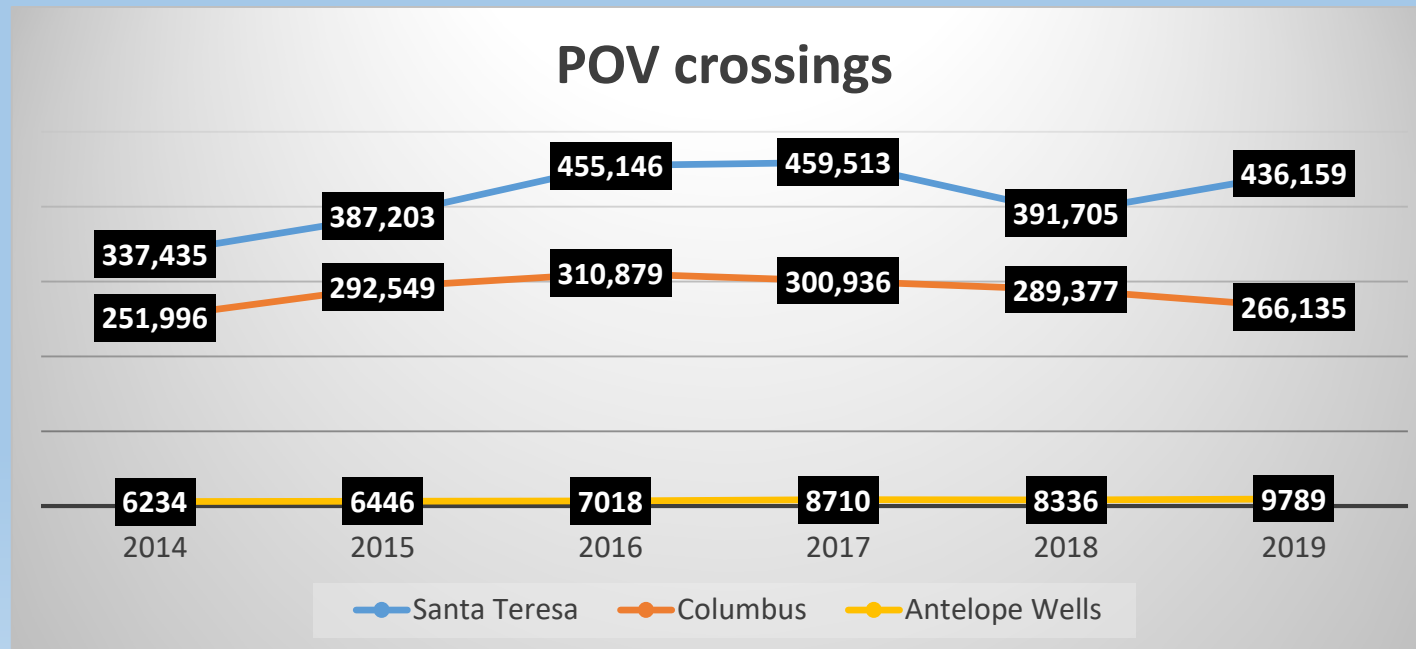
Source: Bureau of Transportation Statistics, DoT
https://explore.dot.gov/t/BTS/views/DataQuery_StatebyPort/QueryData?iframeSizedToWindow=true&embed=y&showAppBanner=false&:display_count=no&:showVizHome=no

Commercial Crossings



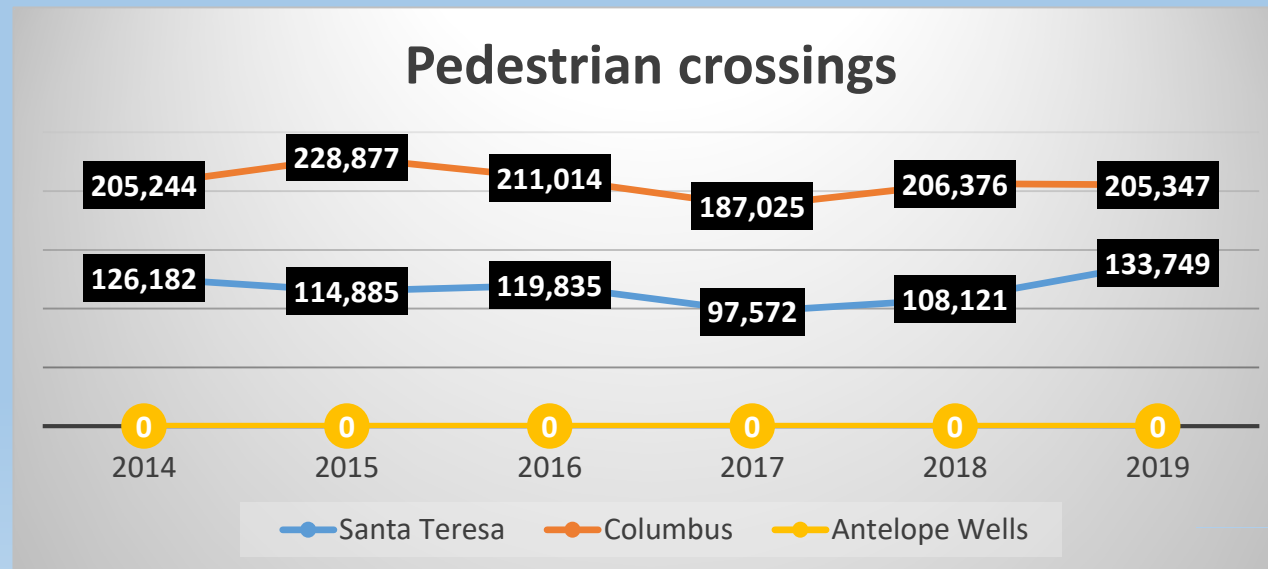
Figures are from January – September of each year

Private owned vehicle (POV) Crossings



Data from January- September each year

Pedestrian Crossing



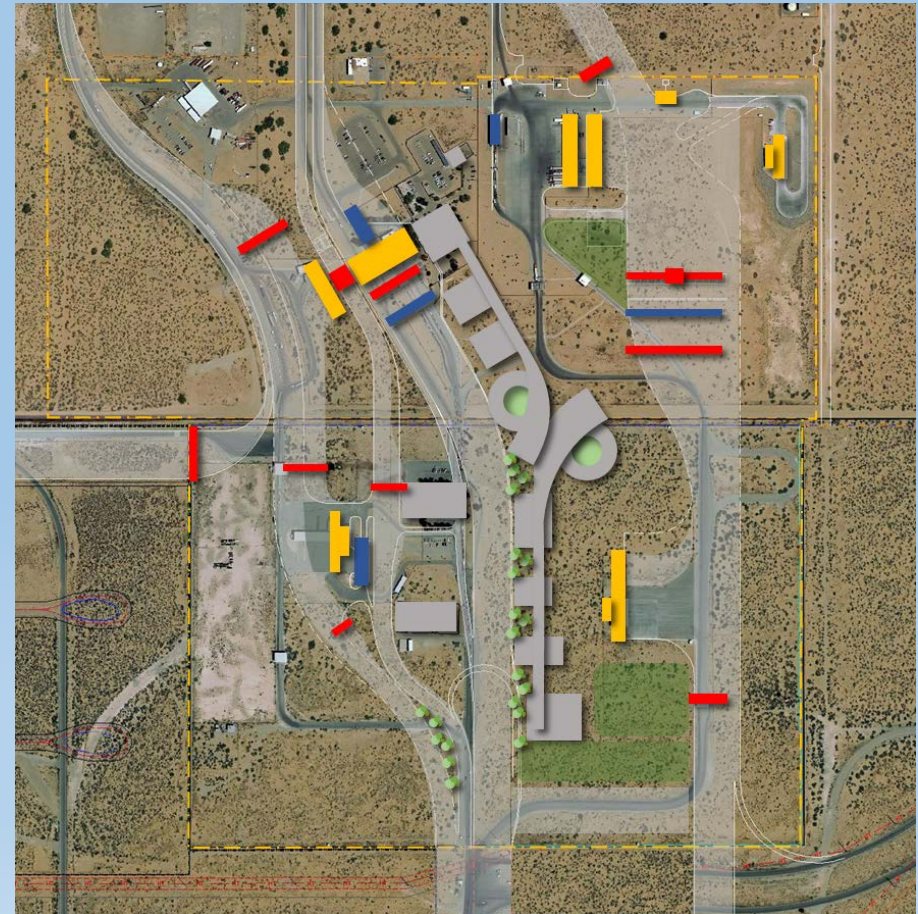
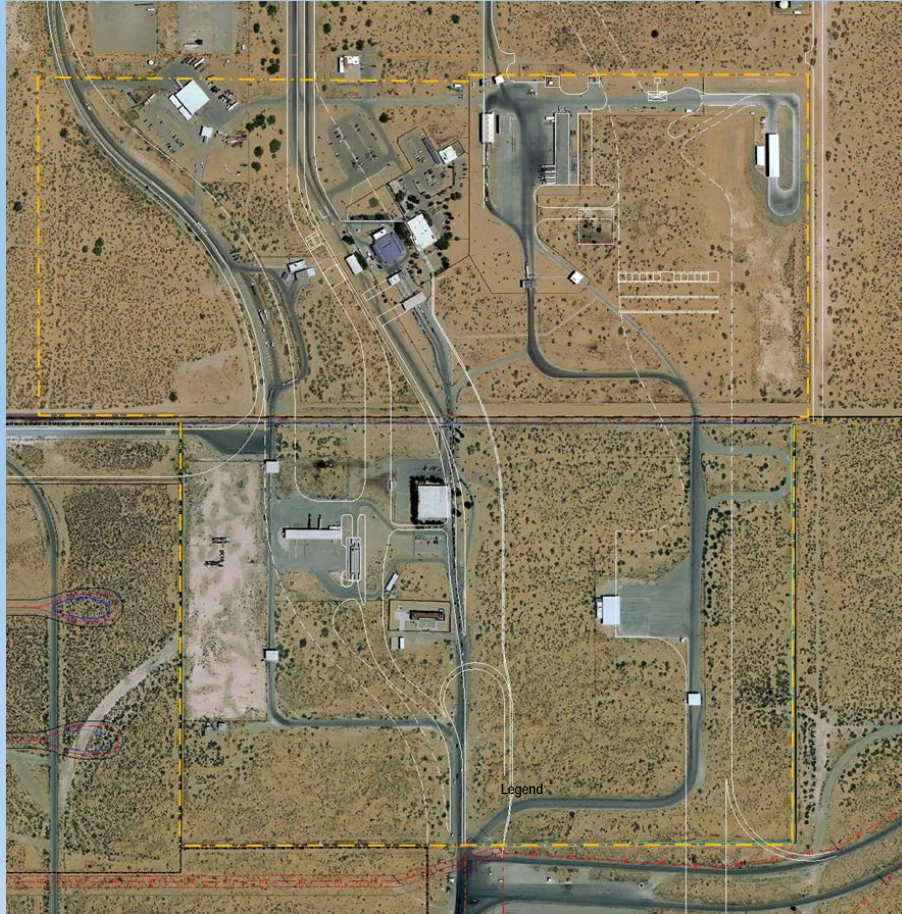
Figures from January- September each year

Key Transportation Projects: BORDER

Ports of Entry



Santa Teresa POE Modernization



Santa Teresa POE: What is needed?

Hazmat Facility (NMBA)

Adequate Oversized/ Overweight lanes

Road expansions for Wind blades

Incorporate/upgrade security devices

Access roads updates, vehicular and cargo.

Mirror passenger lanes on both sides

Designate a SENTRI lane

Upgrade Facilities

New Pedestrian/ bikes concourse

Expand Cargo Lanes for Imports/exports

Incorporate parking areas and drop off/pick up areas on both sides

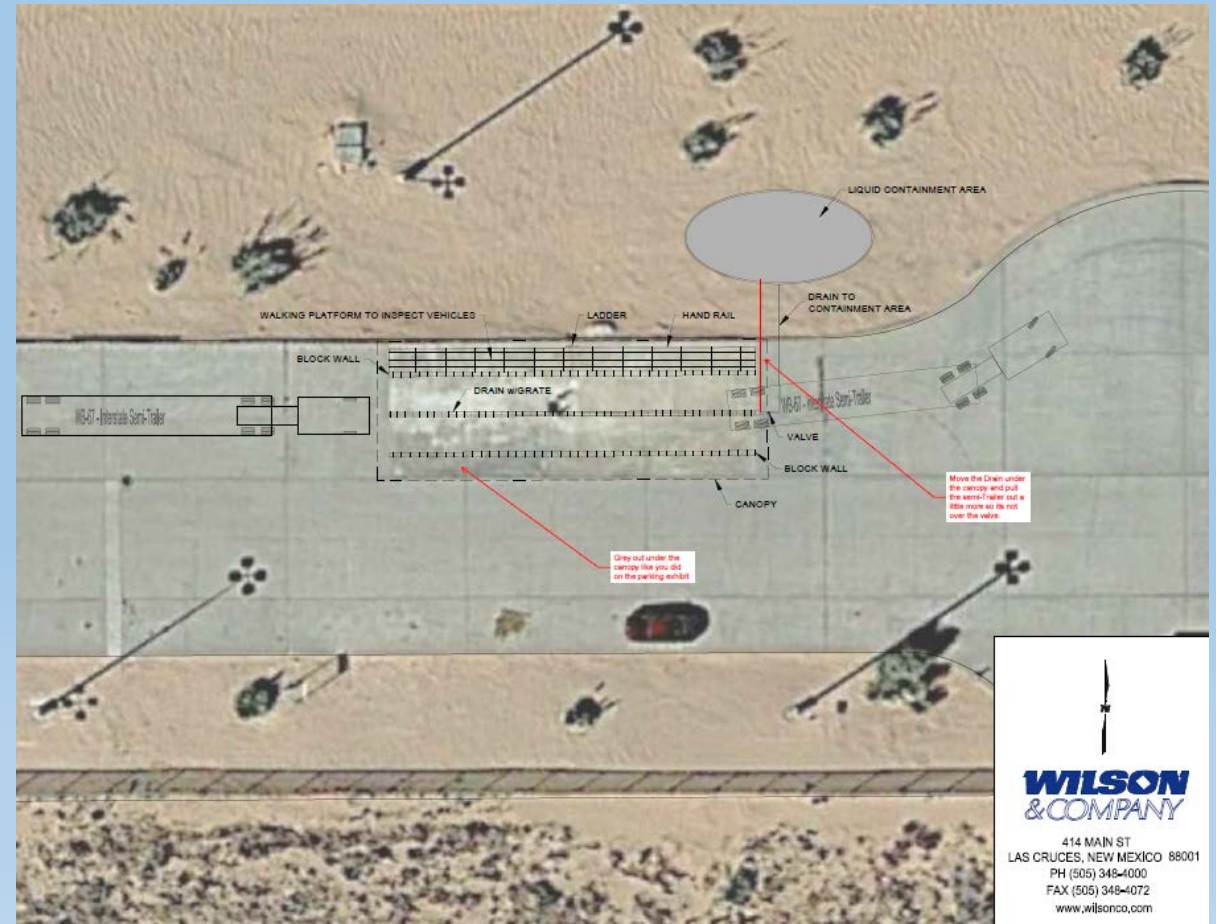
Expand additional facilities for inspections in cargo and passengers on both sides

Incorporate landscape

✓ *Santa Teresa Port of Entry Modernization Plan recently placed on GSA Schedule for Construction*

HAZMAT Crossing at POE

- Increase daily commercial traffic to NM by 22%
- Attract New Businesses
 - Every year a business is turned away—need Hazmat port
- Adds layer of protection at POE
- Creates alternate port for cargo including fuel, airbags, medical supplies..
- APD plans to open port to this cargo fall of 2020

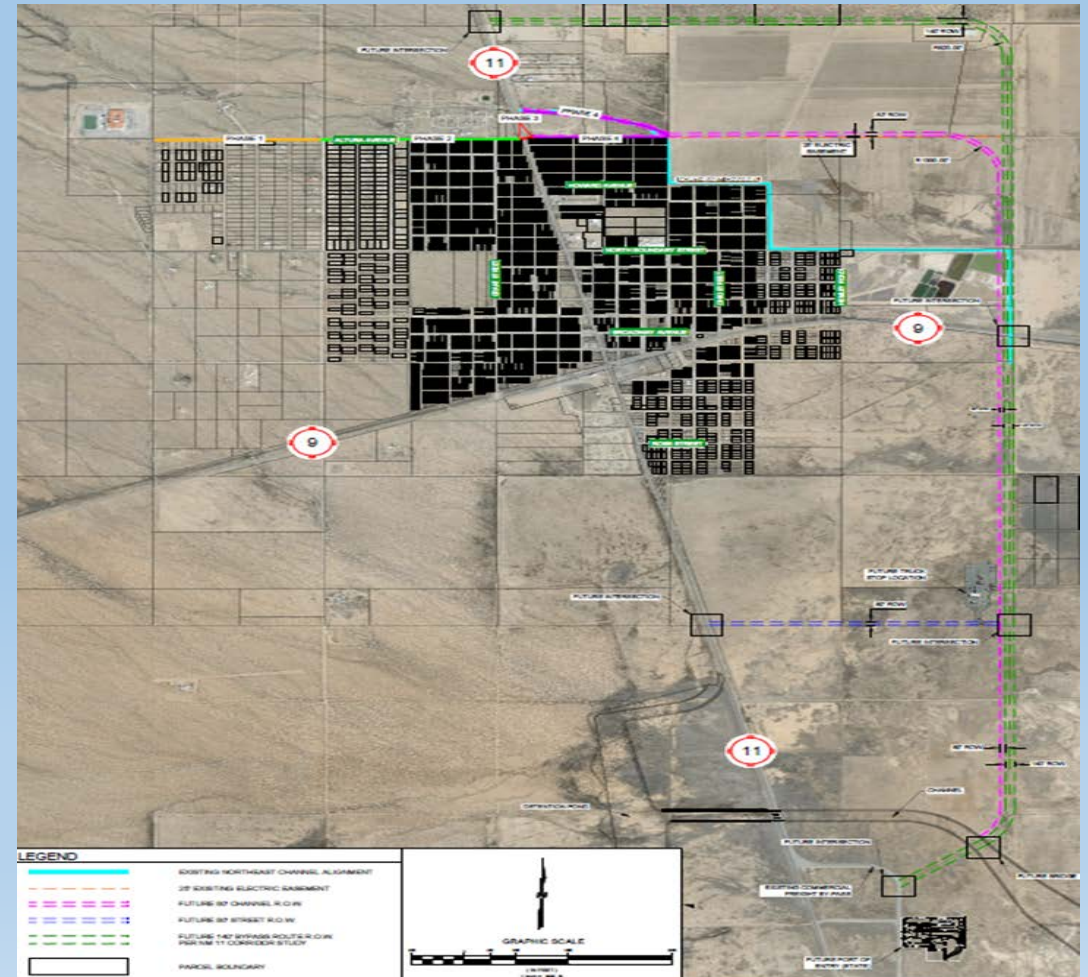


Columbus Port of Entry

- Ribbon Cutting in September:
Brand new \$85M Port of Entry
 - Direct and Indirect economic benefit to Luna County
 - Commercial and POV lanes increased
 - Expanded Inspection facilities; allows for quicker inspections
 - HAZMAT containment site—Non-intrusive tech for inspections
- Mexican Aduana mirrored construction in Palomas
- Future/ Ongoing projects:
 - Completion of Columbus flood control project
 - Phase I, II, III
 - Highway 11 bridge (\$6M)
 - Expand New Mexico Highway 11 to allow for increased commerce
 - Currently two lane road: Public safety concerns and impacts to commerce
 - Truck Bypass: Village of Columbus

Columbus Bypass

- Freight Traffic Economic Development Plan
 - 7 fold commercial freight increase
 - develop plan to capture freight and POV traffic
 - Increase Tourism
 - Industrial opportunities:
 - Cold Storage
 - Processing facilities
 - Agriculture
 - Expand Bovine Trade
 - Promote Industrial Park



Dona Ana County International Jetport



Doña Ana County Jetport Runway Reconstruction and Crosswind Runway Project

Current runway Reconstruction Project:

- Upgrade the lighting to LED lights
- Increase weight capacity from 20,000 lb single wheel weight to 95,000 lb (Small corporate jet to twin engine cargo aircraft)
- Funding: \$4m Capital Outlay; FAA \$5M
- Completion date: June 2020

Crosswind Runway (Future Project)

- Increase weight capacity to handle 350,000 lb aircraft (Boeing 757 cargo aircraft)
- Two phases: estimated cost \$41M

Of note: Jetport completed construction of HazMat/Fire Station in 2018.

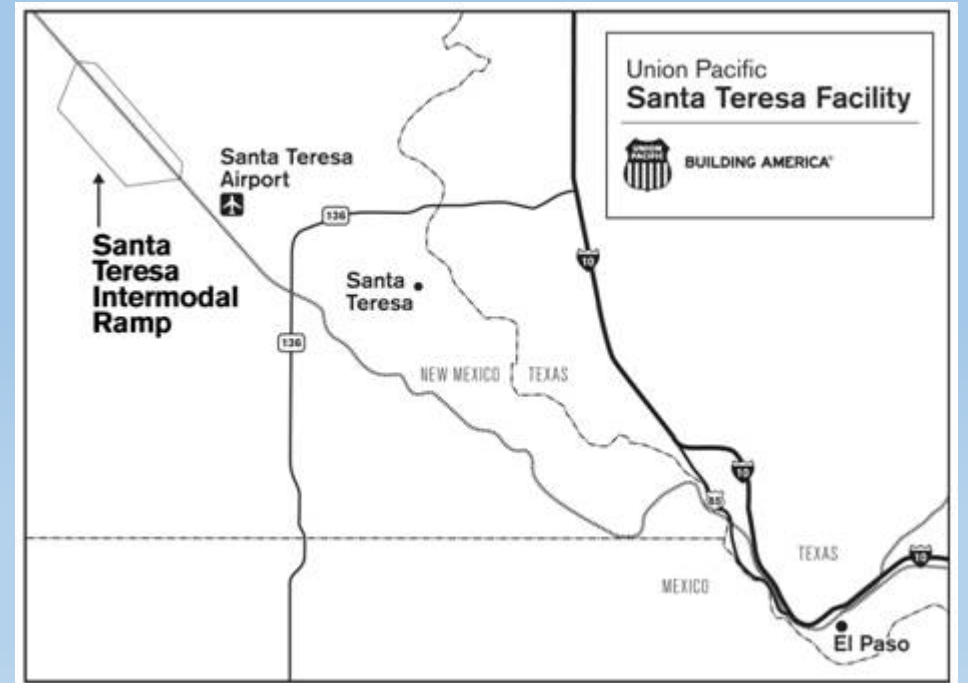


Rail Projects



UPRR Santa Teresa Intermodal Facility

- Union Pacific is investing \$40M dollars to it's \$400M facility:
 - Why is this important?
 - This will add capacity to keep up with growing demand on Sunset Route
 - Add rail lanes for loading and unloading trains
 - Expedite daily rail crossings and refueling
 - Add permanent and temporary jobs
- More than 24% of all UP freight cars handled on Sunset Route starting or terminating in Long Beach, California
 - 120 trains cross through the Santa Teresa Intermodal facility daily



Industrial Road Rail Overpass Project

- Dona Ana County is pursuing Capital Outlay funding for rail overpass design on Industrial Road in ST
 - Benefits:
 - Public Safety
 - Increased rail speed in the area
 - More trains processed daily
- Cost: \$1M for design; \$11M construction



U.S.-Mexico Rail Bypass

Construction of a rail bypass between Chihuahua and New Mexico

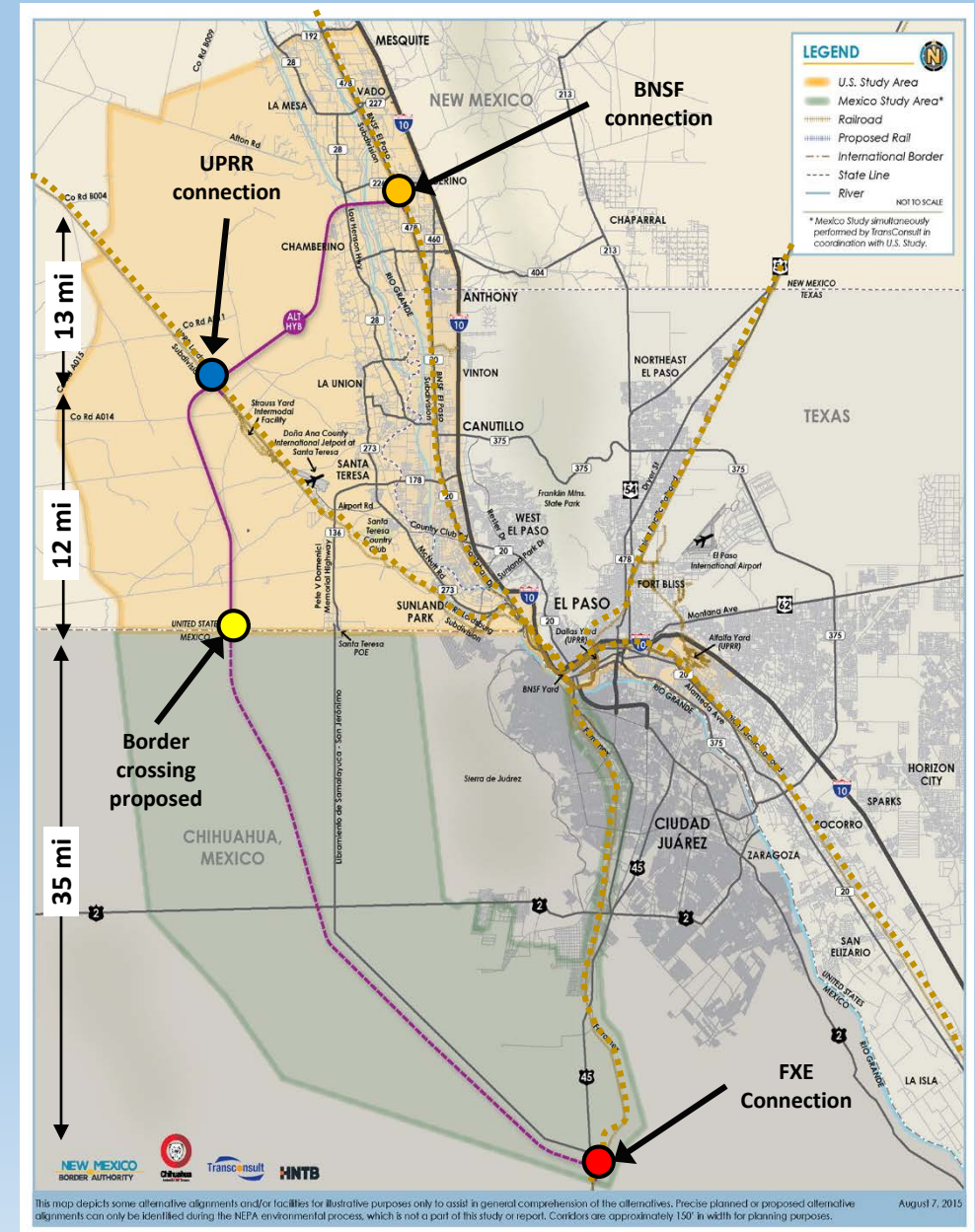
- Railway corridor of 60 miles length
 - ✓ Single track between Ferromex connection and border crossing point (35 mi)
 - ✓ Double track between border crossing point and UP connection (12 mi)
 - ✓ Single track between UP connection and BNSF connection (13 mi)

Benefits:

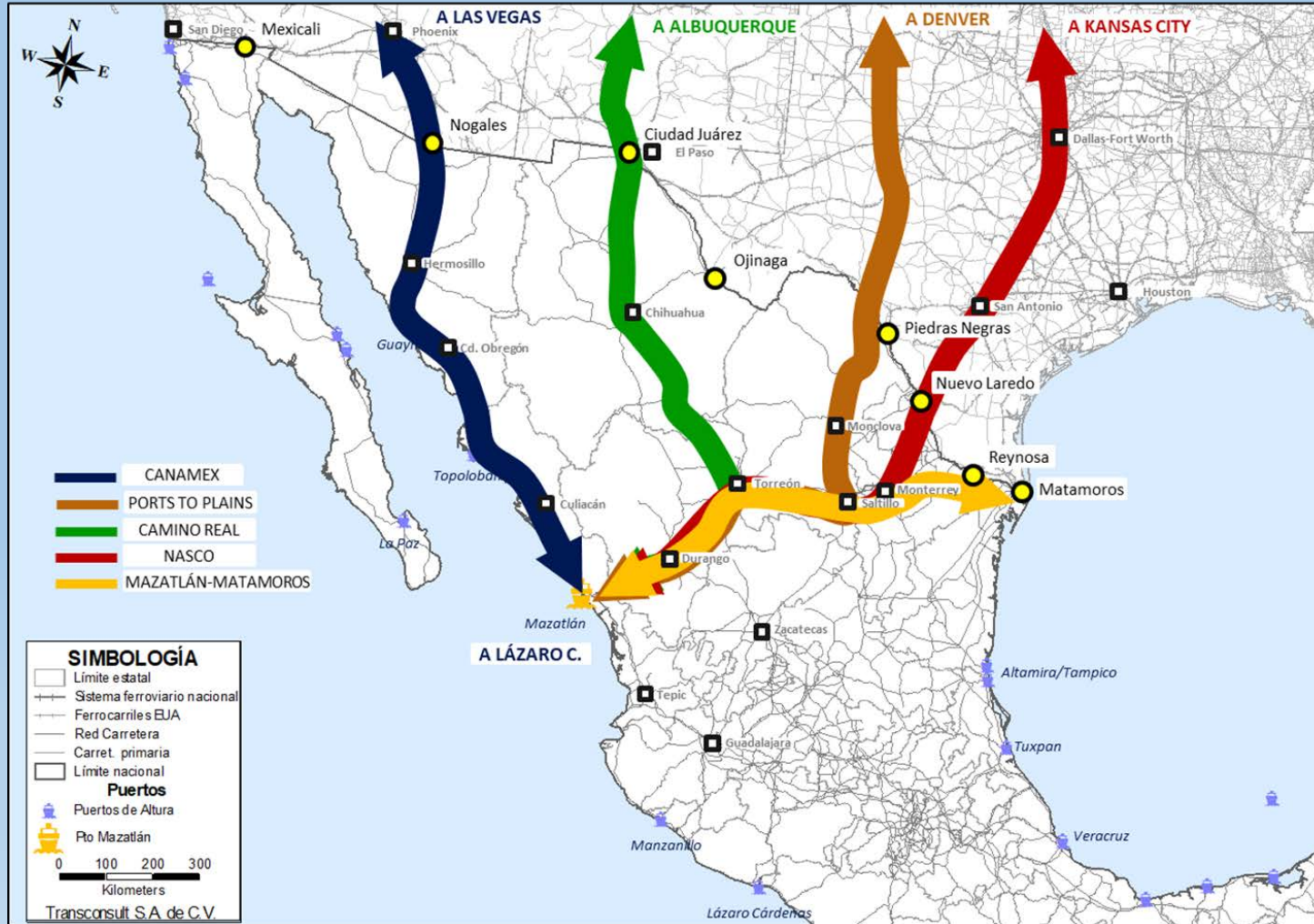
- 24 hours window for interchanging trains in the border
- Proposal of binational yard with unified binational procedures that will serve to the 3 railway companies
- Increased development in the region

Next steps:

- Sign MOU between UPRR, BNSF and Ferromex
- Complete Presidential Permit



North American Trade and Transportation Corridors



Key Infrastructure Updates

- St. Francis Road extension will connect Santa Teresa POE to Sunland Park; RFP out soon
- Sunland Park has completed design of their proposed POE; next step Presidential Permit
- NMDOT currently upgrading to Pete V. Domenici Highway
- Chihuahua-NM Master Plan Update
- State of Chihuahua officials deemed it a priority to complete El Berrendo Road leading to Antelope Wells
 - Next step: make Antelope Wells POE able to process commercial vehicles
- Lordsburg City planning frontage road system

Questions?

Contact information:

Marco Grajeda
Executive Director
575-997-8186 Mobile

MarcoA.Grajeda@state.nm.us

Erika de la O
Deputy Director
(575) 997-8299 Mobile

Erika.DeLaO@state.nm.us