



New Mexico Environment Department

Emissions Tracking and School Setbacks

Water & Natural Resources Committee

Michelle Miano
Director, Environmental Protection Division

July 13, 2026



Emissions Tracking and School Setbacks

- Air is complex, dynamic, and exists at a variety of elevations.
- NMED tracks and regulates certain emissions through its air quality program in many ways under federal and state law.
- NMED does not regulate land use/setback distances to control emissions.
 - Setback = mandated distances between an emission source and properties like homes or schools.



What emissions are currently regulated by NMED?

CLEAN AIR ACT (FEDERAL LEVEL) AND AIR QUALITY CONTROL ACT (STATE-LEVEL)

- Six criteria pollutants dangerous to human health are regulated through national standards for ambient air concentration:
 - Ozone;
 - Particulate Matter;
 - Nitrogen Dioxide;
 - Sulfur Dioxide;
 - Carbon Monoxide;
 - Lead.
- Volatile Organic Compounds (VOCs) and Nitrous Oxides (NO_x) are regulated as ozone precursors.
- Although NMED does not directly regulate greenhouse gases at this time, it works hard to meet the state's reduction targets pursuant to Executive Order 2019-003.



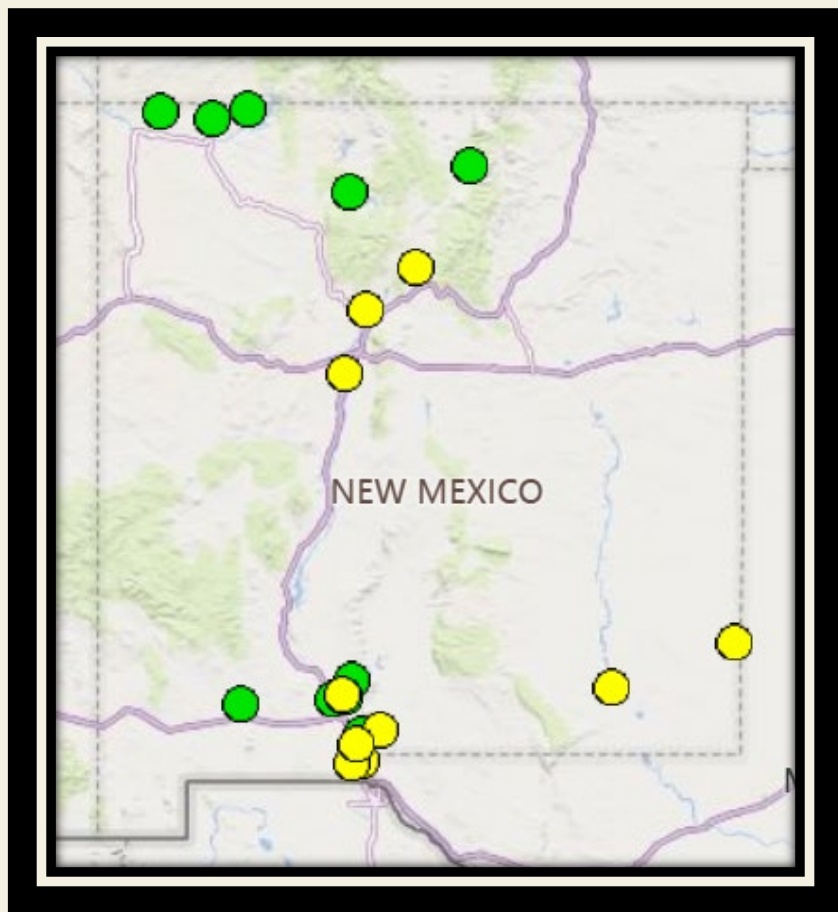
How does NMED track emissions?

- Monitoring
- Modeling
- Permitting requirements
- Emissions inventories from permitted sources
- Compliance and enforcement



Monitoring Network (SLAMS)

SLAMS = State and Local Air Monitoring Stations



- The “gold standard” foundational backbone of the country’s air monitoring infrastructure.
- Housed in temperature-controlled enclosures.
- Checked constantly by trained field technicians.
- Rigorous, continuous calibration and strict quality assurance protocols.



Monitoring Network (SLAMS)

5ZR Carlsbad

Recent Data: 7/7/2026 4:00 PM

Index Value: Moderate (87)

Pollutants:
 NO2 - 0 ppb
 O3 - 0.064 ppm

Owner:
 NMED

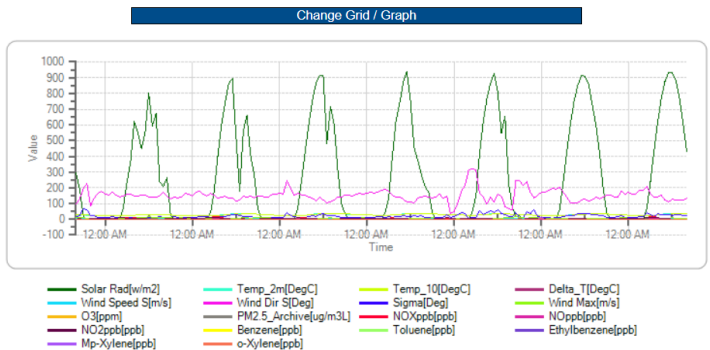
[Click for more detail](#)

- Designed to provide decades of unbroken, long-term trend data
- Data utilized for regulatory purposes
- Data available 24/7 at: <https://aqi.air.env.nm.gov/>

Real Time Condition: 5ZR Carlsbad Last Received: 7/7/2026 4:00 PM

View station info

Monitors	
Monitor	Value
Solar Rad[w/m2]	431.6
Temp_2m[DegC]	36.5
Temp_10[DegC]	35.1
Delta_T[DegC]	-1.4
Wind Speed S[m/s]	4.2
Wind Dir S[Deg]	134.6
Sigma[Deg]	25.3
Wind Max[m/s]	8.1
O3[ppm]	0.064
PM2.5_Archive[ug/m3L]	-
NOXppb[ppb]	0
NOppb[ppb]	0
NO2ppb[ppb]	0
Benzene[ppb]	0.050
Toluene[ppb]	0.039
Ethylbenzene[ppb]	0.000
Mp-Xylene[ppb]	0.000
o-Xylene[ppb]	0.000

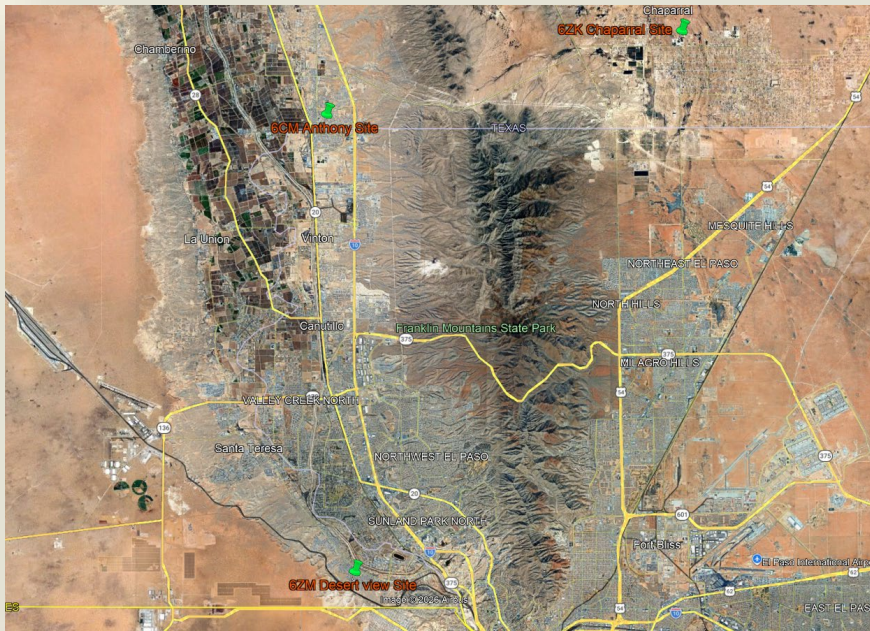


Click On Monitor In The Table To View Its Graph



Monitoring Network (SLAMS)

SLAMS School Locations



Anthony Elementary School
705 Church Street, Anthony NM

Chaparral Schools Complex
(Elementary school, Middle school,
and High school)
680 McCombs, Chaparral

Desert View Elementary School
5935A Valle Vista, Sunland Park NM

New Mexico SLAMS information available 24/7 at: <https://aqi.air.env.nm.gov/>



AirNow – Air Quality Index

Air Quality Index (AQI) & Health

Local air quality can affect our daily lives. Like the weather, it can change from day to day. U.S. EPA’s Air Quality Index, or AQI, makes short-term information available about the health effects and how to avoid those effects.

The screenshot shows the AirNow website interface. At the top, there is a navigation bar with links for AirNow, AQI & Health, Fires, Maps & Data, Education, International, Resources, and a Beta badge. Below the navigation bar, there is a search bar for 'Carlsbad, NM' and a weather widget showing '96°'. The main content area is titled 'Current Air Quality' and features a map of the region with color-coded air quality zones. A detailed panel on the right provides the following information:

Primary Pollutant
This pollutant currently has the highest AQI in the area.

OZONE **105** Unhealthy for Sensitive Groups

People with lung disease such as asthma, children and teens, older adults, and people who are routinely active outdoors for six or more hours a day — take any of these steps to reduce your exposure:

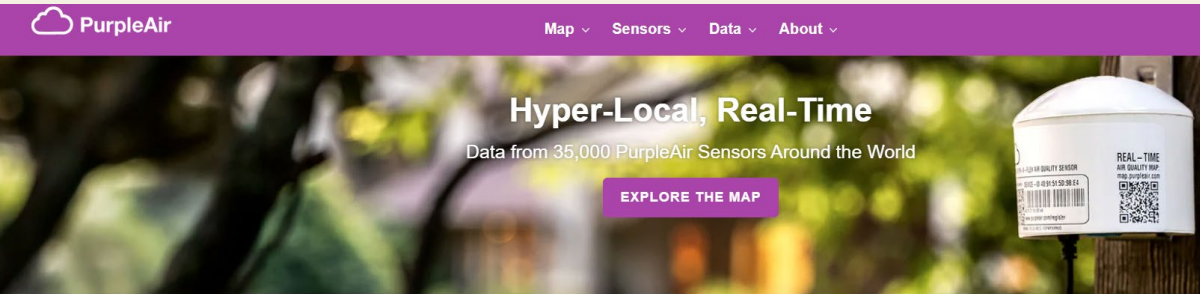
- Choose less strenuous activities (like walking instead of running) so you don't breathe as hard
- Shorten the amount of time you are active outdoors.
- Be active outdoors when air quality is better.

Everyone else: Enjoy your outdoor activities.

Available 24/7 at <https://www.airnow.gov/aqi-and-health/>



Community Monitors



PurpleAir makes sensors that empower communities who collect hyper-local, real-time, air quality data and share it with the public.

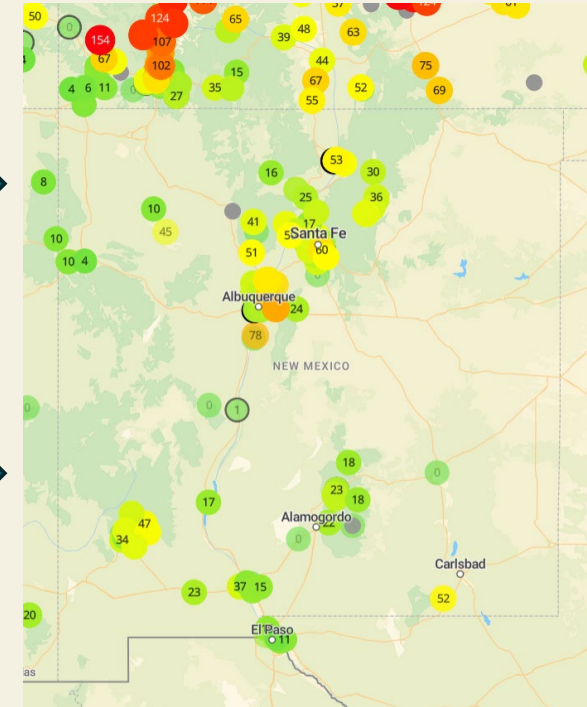
AIR QUALITY SENSORS



Hyperlocal exposure tracking and community awareness.

Real-time, short-term localized spikes (minutes/hours).

Dense (inexpensive, easily deployed across).





Emissions Tracking Challenges

- ▣ Regional monitoring v. hyperlocal monitoring
- ▣ Weather, atmospheric chemistry and exceptional events
- ▣ Permitting limits v. compliance issues



Contact Information

Michelle Miano
Director, Environmental Protection Division
(505) 479-2596
michelle.miano@env.nm.gov