

**RESEARCH & POLLING**  
INC.

For the New Mexico  
Legislative Council Service

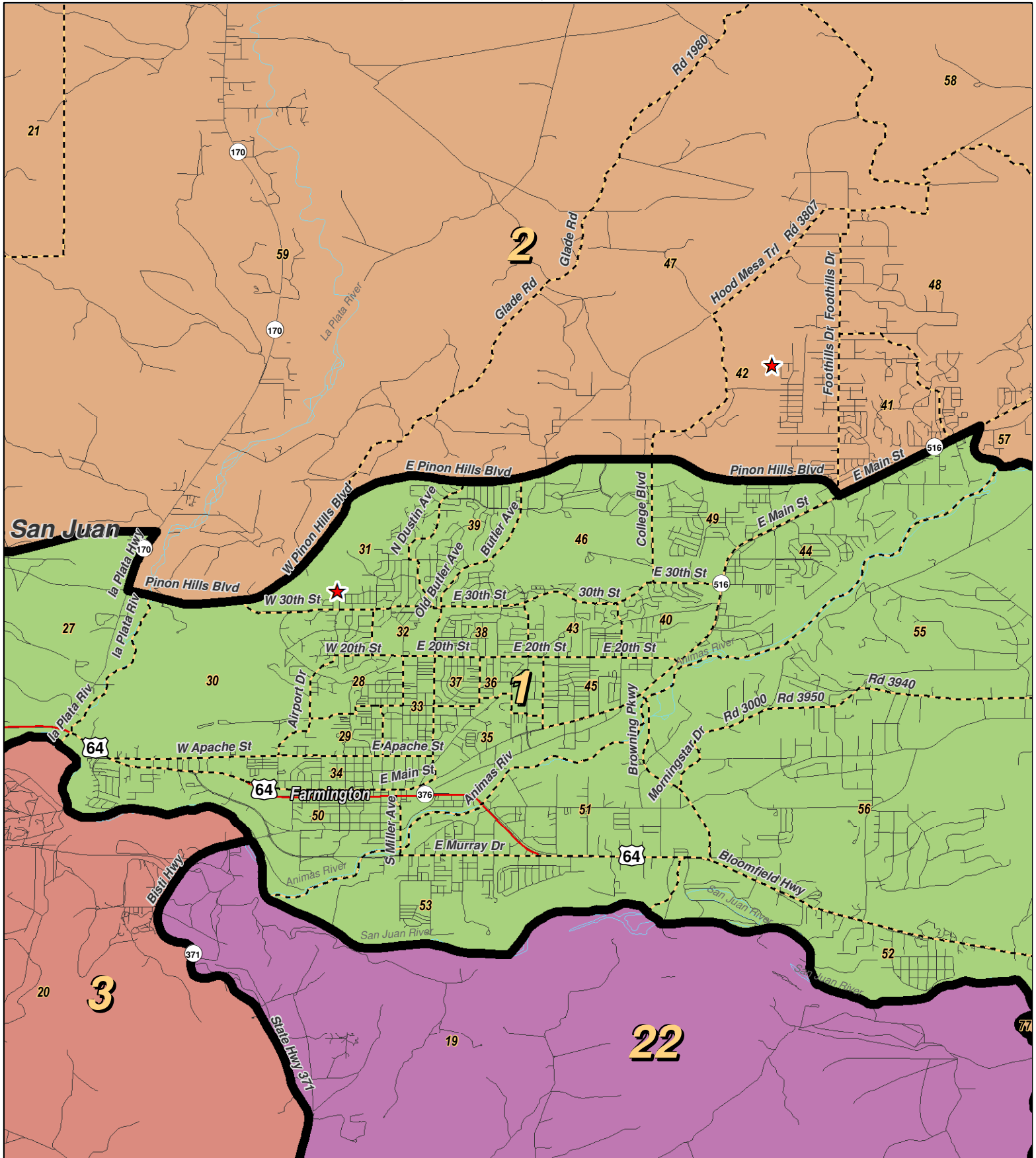
0 1 2 3 Miles



**LEGEND** Created: January 31, 2012

Precincts	Rivers	Interstate
Counties	Lakes / Ponds	US Highway
		State Highway

Research & Polling, Inc. distributes this map assuming no liability for any errors, omissions, or inaccuracies in the information provided regardless of the cause in reliance upon any maps.



0 1 2 Miles

**RESEARCH & POLLING INC.**

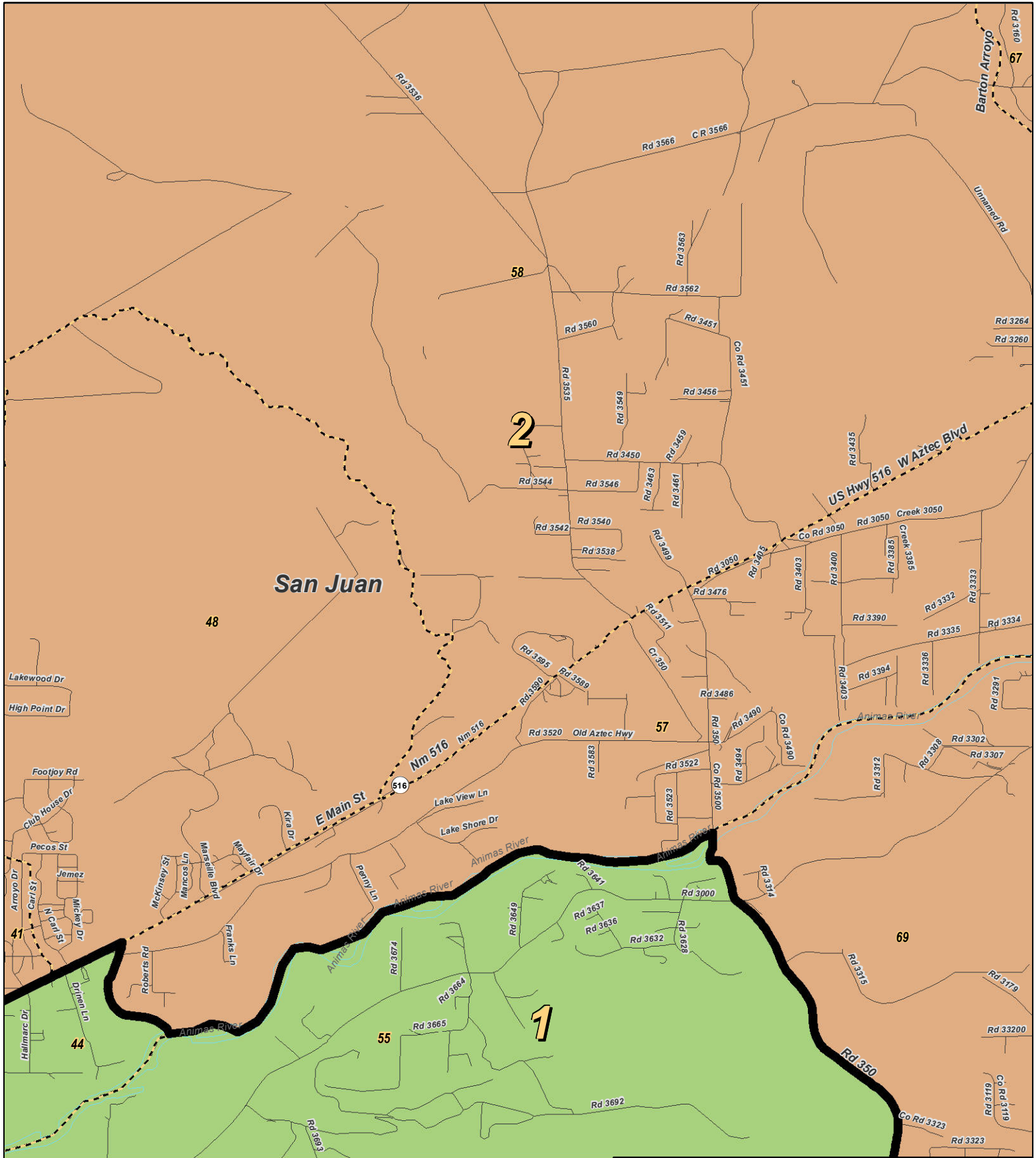
For the New Mexico Legislative Council Service



**LEGEND** Created: January 18, 2012

- ★ Legislators
- ▭ Precincts
- ▭ Counties
- ~ Rivers
- ~ Lakes / Ponds
- ~ Interstate
- ~ US Highway
- ~ State Highway

Research & Polling, Inc. distributes this map assuming no liability for any errors, omissions, or inaccuracies in the information provided regardless of the cause in reliance upon any maps.



0 0.9 Miles

**RESEARCH & POLLING INC.**

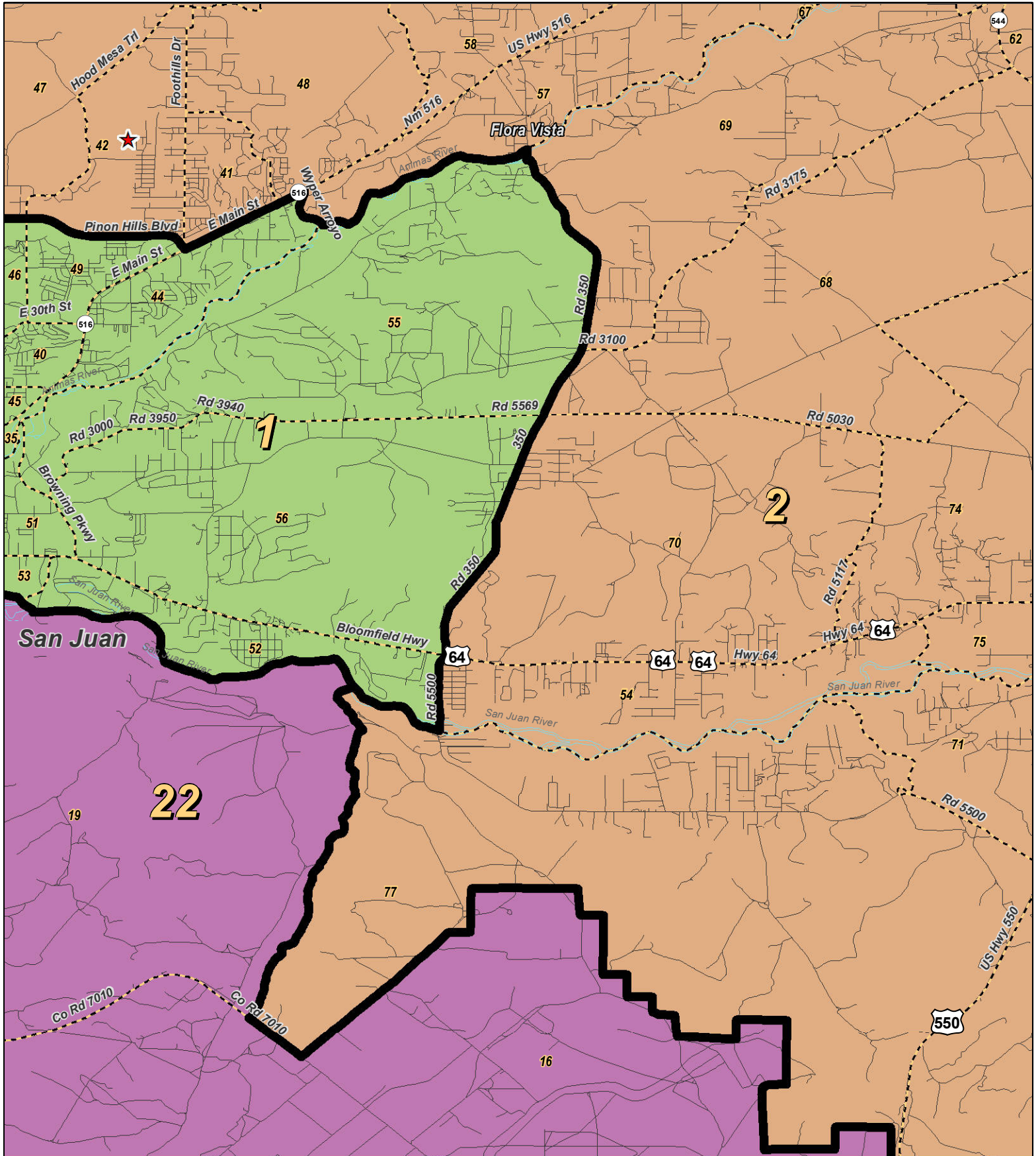
For the New Mexico Legislative Council Service



**LEGEND** Created: January 23, 2012

- ★ Legislators
- ▭ Precincts
- ▭ Counties
- ~ Rivers
- ~ Lakes / Ponds
- ~ Interstate
- ~ US Highway
- ~ State Highway

Research & Polling, Inc. distributes this map assuming no liability for any errors, omissions, or inaccuracies in the information provided regardless of the cause in reliance upon any maps.



0 1 2 Miles

**RESEARCH & POLLING INC.**

For the New Mexico Legislative Council Service



**LEGEND** Created: January 23, 2012

★ Legislators	~ Rivers	~ Interstate
□ Precincts	~ Lakes / Ponds	~ US Highway
▭ Counties		~ State Highway

Research & Polling, Inc. distributes this map assuming no liability for any errors, omissions, or inaccuracies in the information provided regardless of the cause in reliance upon any maps.

**NM Senate  
Plaintiffs, Intervenors, and Executive Defendants Joint  
(Court Adopted January 2012)**

**District: 1**

County/ Precinct	Total Population	Adult Hispanic	Total Adult Native American	Adult Non-Hispanic		
				White	Native American	Black
SJ 26	1,204	7.6%	71.7%	22.0%	67.5%	0.1%
SJ 27	3,068	25.0%	52.8%	21.8%	49.9%	1.1%
SJ 28	1,078	14.3%	12.5%	71.0%	10.7%	1.0%
SJ 29	1,123	19.5%	26.0%	53.8%	21.8%	1.2%
SJ 30	2,165	16.4%	18.1%	65.4%	15.5%	0.5%
SJ 31	2,389	10.5%	5.6%	82.2%	4.6%	0.4%
SJ 32	919	18.9%	30.3%	50.3%	26.9%	0.5%
SJ 33	1,500	17.3%	21.8%	58.3%	19.4%	2.7%
SJ 34	1,858	18.5%	37.8%	41.7%	34.8%	2.1%
SJ 35	1,341	23.4%	20.2%	53.9%	18.3%	1.0%
SJ 36	1,077	21.7%	16.9%	60.5%	15.9%	0.6%
SJ 37	1,103	16.5%	7.0%	76.5%	5.0%	0.1%
SJ 38	1,770	16.5%	13.7%	68.9%	12.8%	0.6%
SJ 39	1,793	9.2%	7.4%	80.9%	6.3%	0.8%
SJ 40	1,654	19.9%	21.9%	57.5%	19.7%	0.7%
SJ 43	1,425	19.5%	26.0%	53.5%	23.6%	1.1%
SJ 44	2,314	22.4%	15.4%	61.3%	13.8%	0.7%
SJ 45	2,278	25.4%	30.6%	42.7%	29.1%	0.8%
SJ 46	1,395	14.8%	10.6%	71.3%	10.0%	1.8%
SJ 49	2,257	16.0%	11.3%	70.3%	9.4%	0.8%
SJ 50	2,066	17.4%	39.2%	42.8%	37.6%	0.5%
SJ 51	2,121	37.4%	27.3%	35.8%	25.4%	0.3%
SJ 52	1,238	27.6%	18.4%	52.8%	16.6%	1.4%
SJ 53	2,904	33.3%	22.0%	45.1%	19.2%	0.8%
SJ 55	1,809	13.3%	12.6%	73.2%	11.7%	0.1%
SJ 56	4,002	24.6%	39.9%	35.9%	36.7%	0.9%
<b>District Totals</b>	<b>47,851</b>	<b>20.3%</b>	<b>24.5%</b>	<b>54.3%</b>	<b>22.4%</b>	<b>0.9%</b>