

0 4 8 12 16 Miles

RESEARCH & POLLING INC.

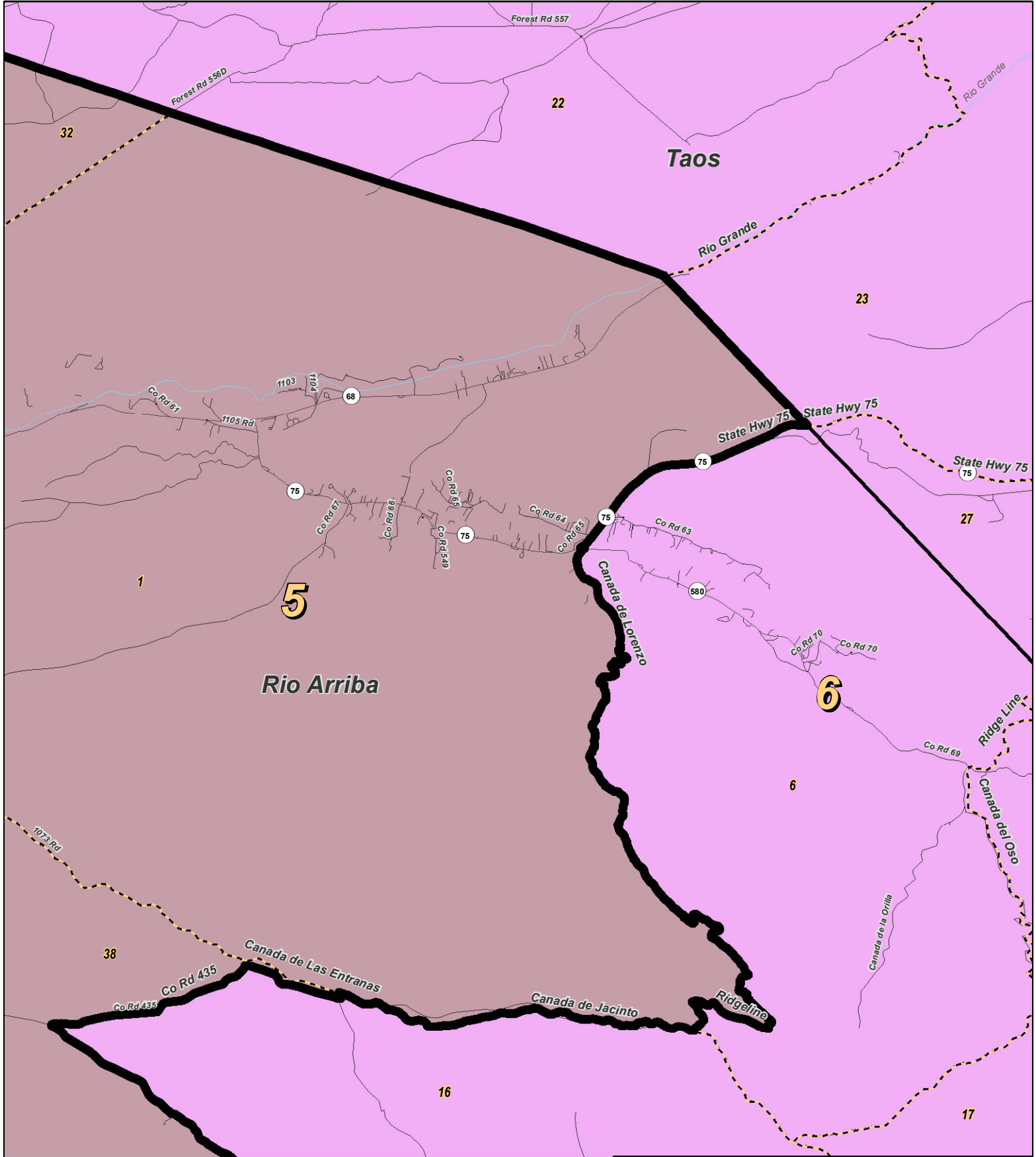
For the New Mexico Legislative Council Service



LEGEND Created: January 31, 2012

Precincts	Rivers	Interstate
Counties	Lakes / Ponds	US Highway
		State Highway

Research & Polling, Inc. distributes this map assuming no liability for any errors, omissions, or inaccuracies in the information provided regardless of the cause in reliance upon any maps.



0 1 Miles

RESEARCH & POLLING
INC.

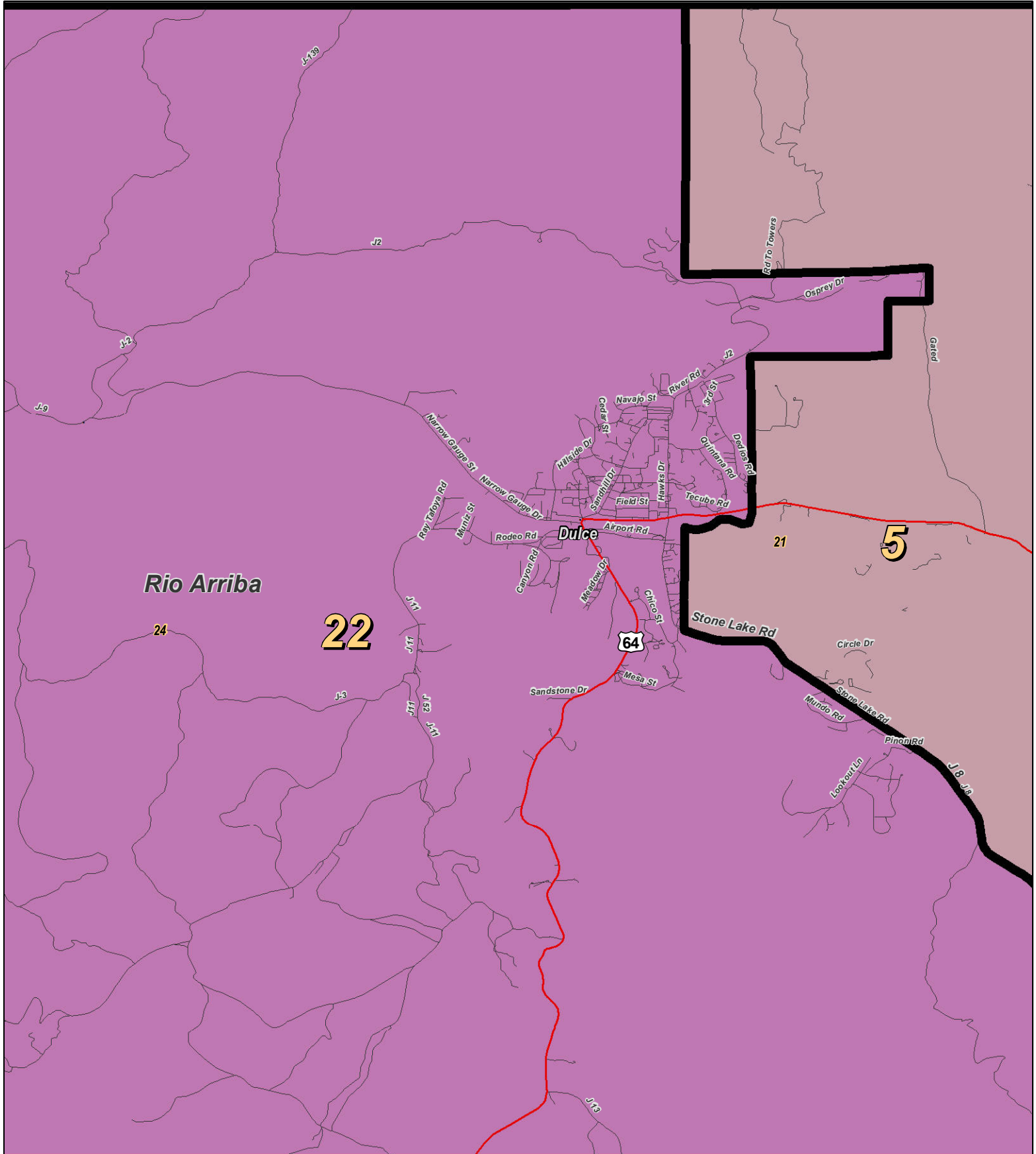
For the New Mexico
Legislative Council Service



LEGEND Created: January 23, 2012

★ Legislators	~ Rivers	↔ Interstate
▭ Precincts	☪ Lakes / Ponds	↔ US Highway
▭ Counties		~ State Highway

Research & Polling, Inc. distributes this map assuming no liability for any errors, omissions, or inaccuracies in the information provided regardless of the cause in reliance upon any maps.



For the New Mexico Legislative Council Service

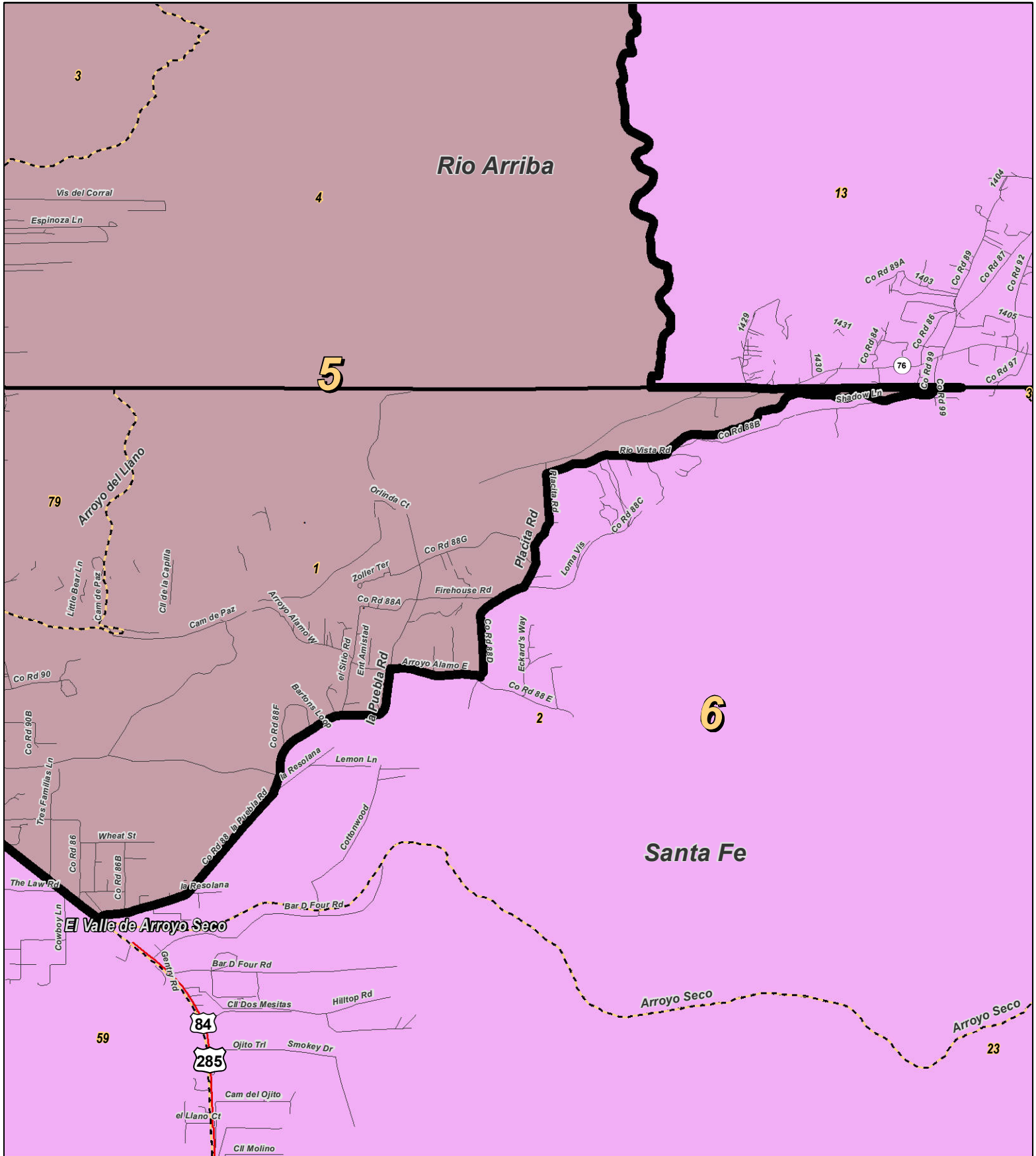
0 1 Miles

NEW MEXICO

LEGEND Created: January 23, 2012

★ Legislators	~ Rivers	⚡ Interstate
▭ Precincts	☪ Lakes / Ponds	⚡ US Highway
▭ Counties		~ State Highway

Research & Polling, Inc. distributes this map assuming no liability for any errors, omissions, or inaccuracies in the information provided regardless of the cause in reliance upon any maps.



0 1 Miles

RESEARCH & POLLING INC.

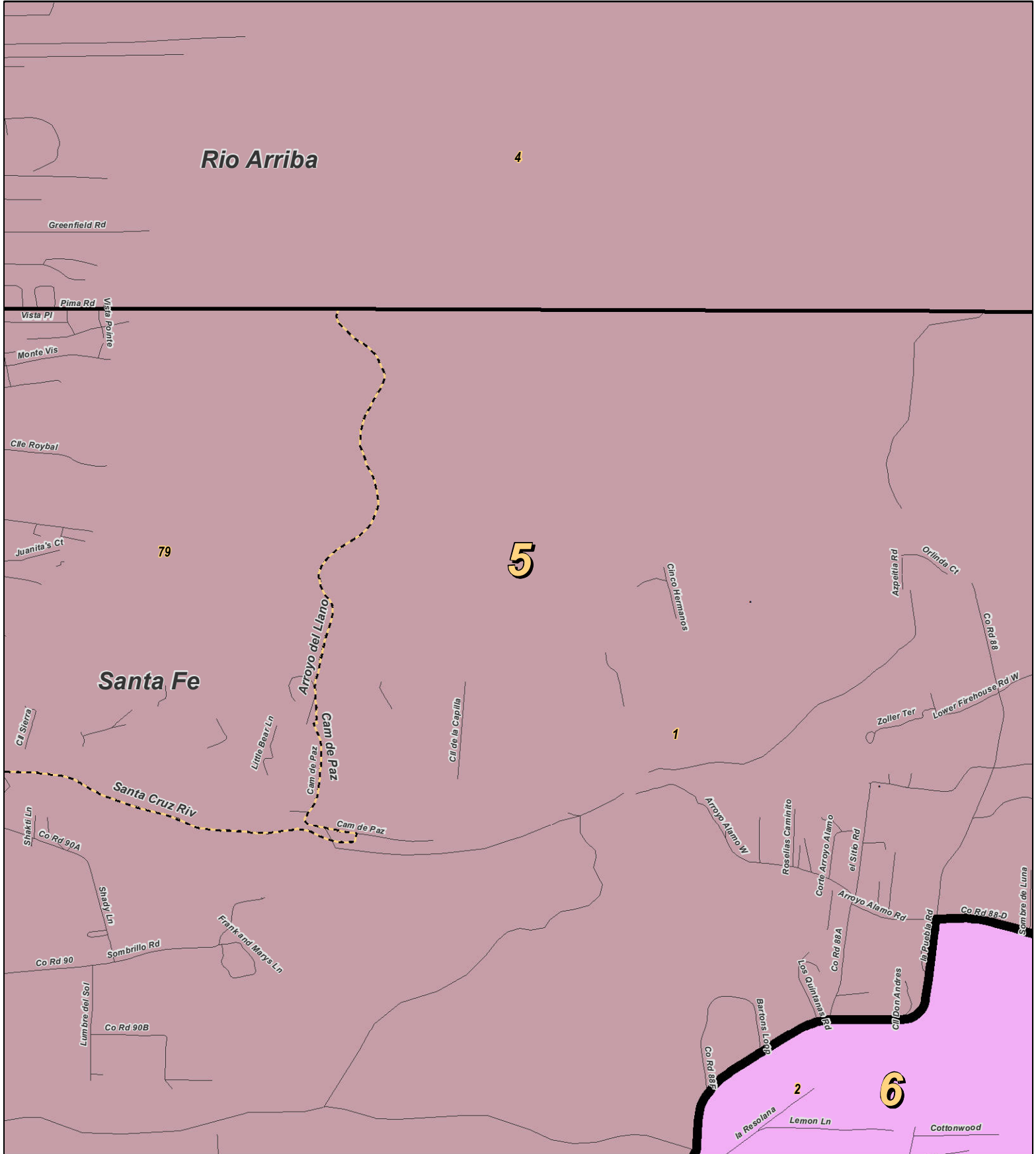
For the New Mexico Legislative Council Service



LEGEND Created: January 23, 2012

- ★ Legislators
- ▭ Precincts
- ▭ Counties
- ~ Rivers
- ☪ Lakes / Ponds
- ~ Interstate
- ~ US Highway
- ~ State Highway

Research & Polling, Inc. distributes this map assuming no liability for any errors, omissions, or inaccuracies in the information provided regardless of the cause in reliance upon any maps.



0 0.5 Miles

RESEARCH & POLLING INC.

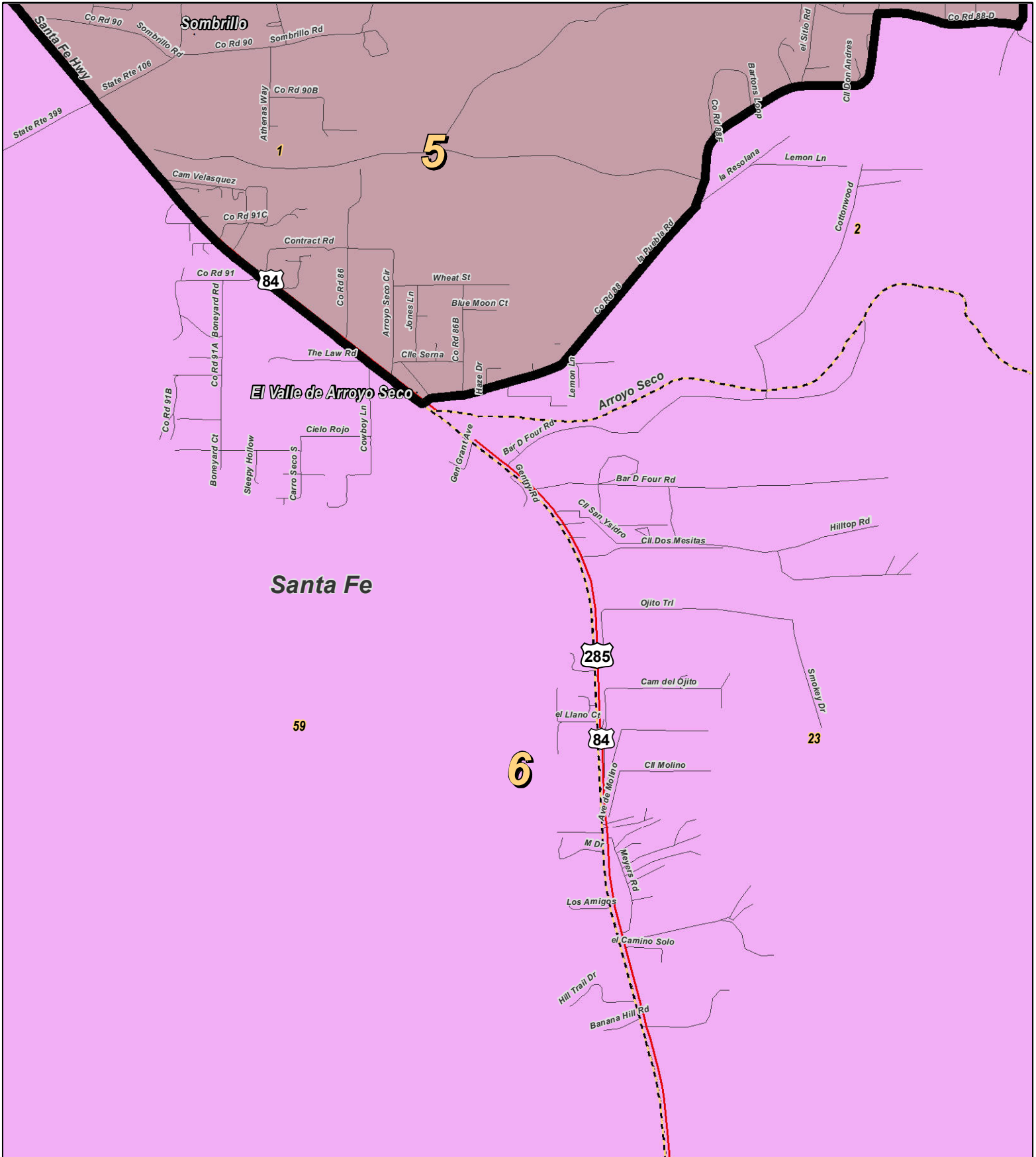
For the New Mexico Legislative Council Service



LEGEND Created: January 23, 2012

★ Legislators	~ Rivers	≡ Interstate
▭ Precincts	☪ Lakes / Ponds	≡ US Highway
▭ Counties		~ State Highway

Research & Polling, Inc. distributes this map assuming no liability for any errors, omissions, or inaccuracies in the information provided regardless of the cause in reliance upon any maps.



0 0.7 Miles

RESEARCH & POLLING INC.

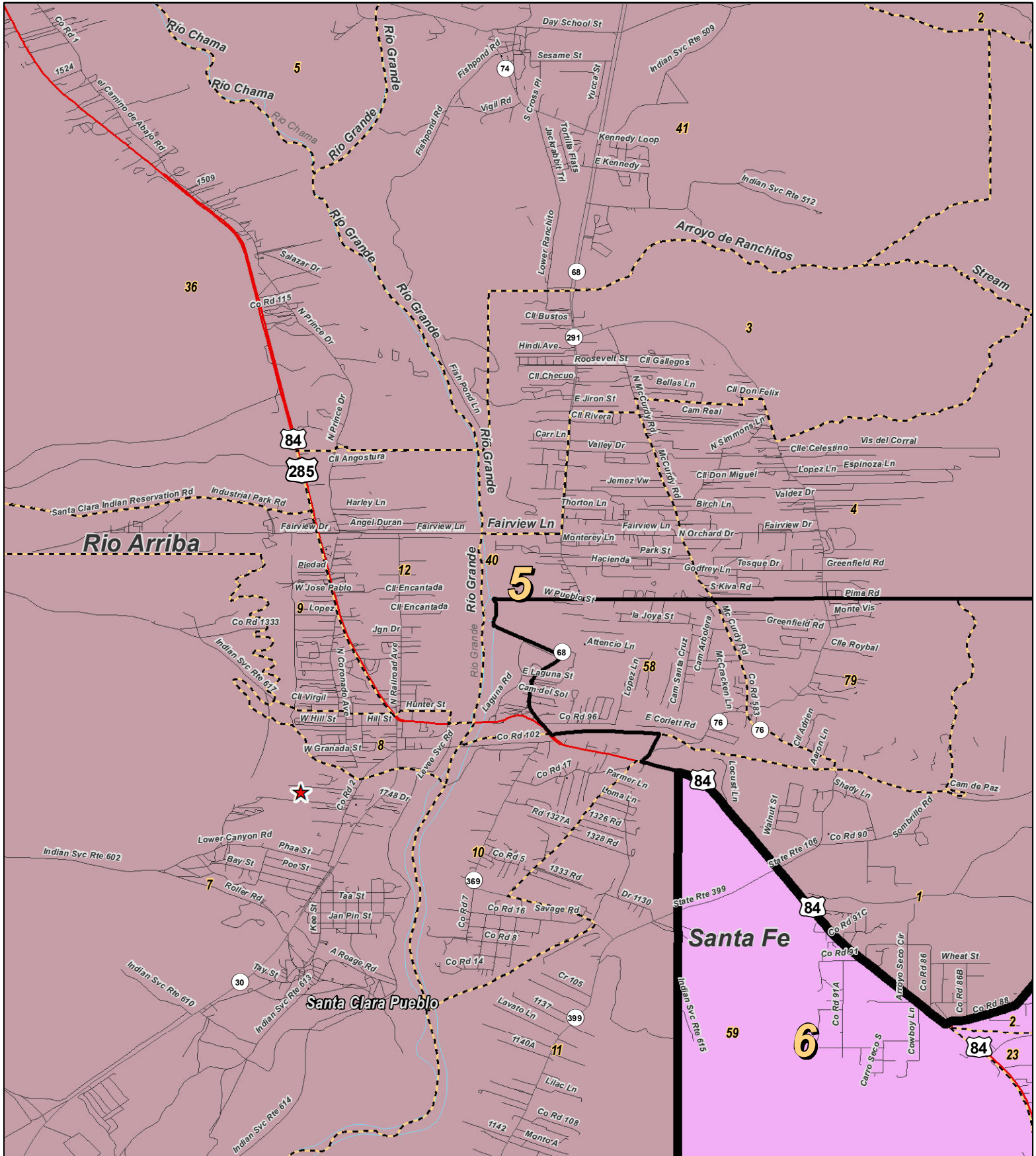
For the New Mexico Legislative Council Service



LEGEND Created: January 23, 2012

★ Legislators	~ Rivers	⚡ Interstate
▭ Precincts	☪ Lakes / Ponds	⚡ US Highway
▭ Counties		~ State Highway

Research & Polling, Inc. distributes this map assuming no liability for any errors, omissions, or inaccuracies in the information provided regardless of the cause in reliance upon any maps.



0 1 Miles

RESEARCH & POLLING INC.

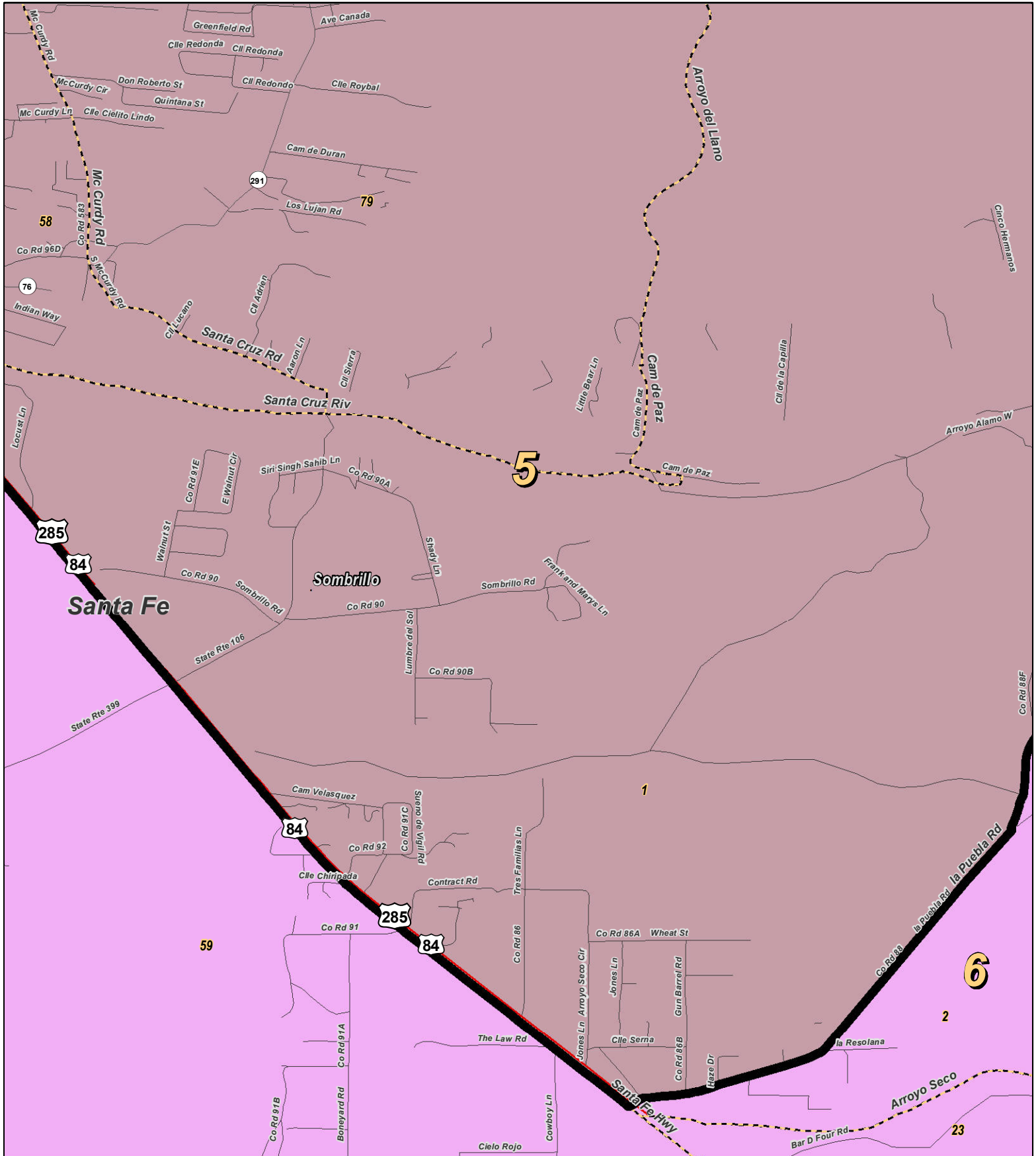
For the New Mexico Legislative Council Service



LEGEND Created: January 23, 2012

- ★ Legislators
- ▭ Precincts
- ▭ Counties
- ~ Rivers
- ~ Lakes / Ponds
- ~ Interstate
- ~ US Highway
- ~ State Highway

Research & Polling, Inc. distributes this map assuming no liability for any errors, omissions, or inaccuracies in the information provided regardless of the cause in reliance upon any maps.



RESEARCH & POLLING INC.

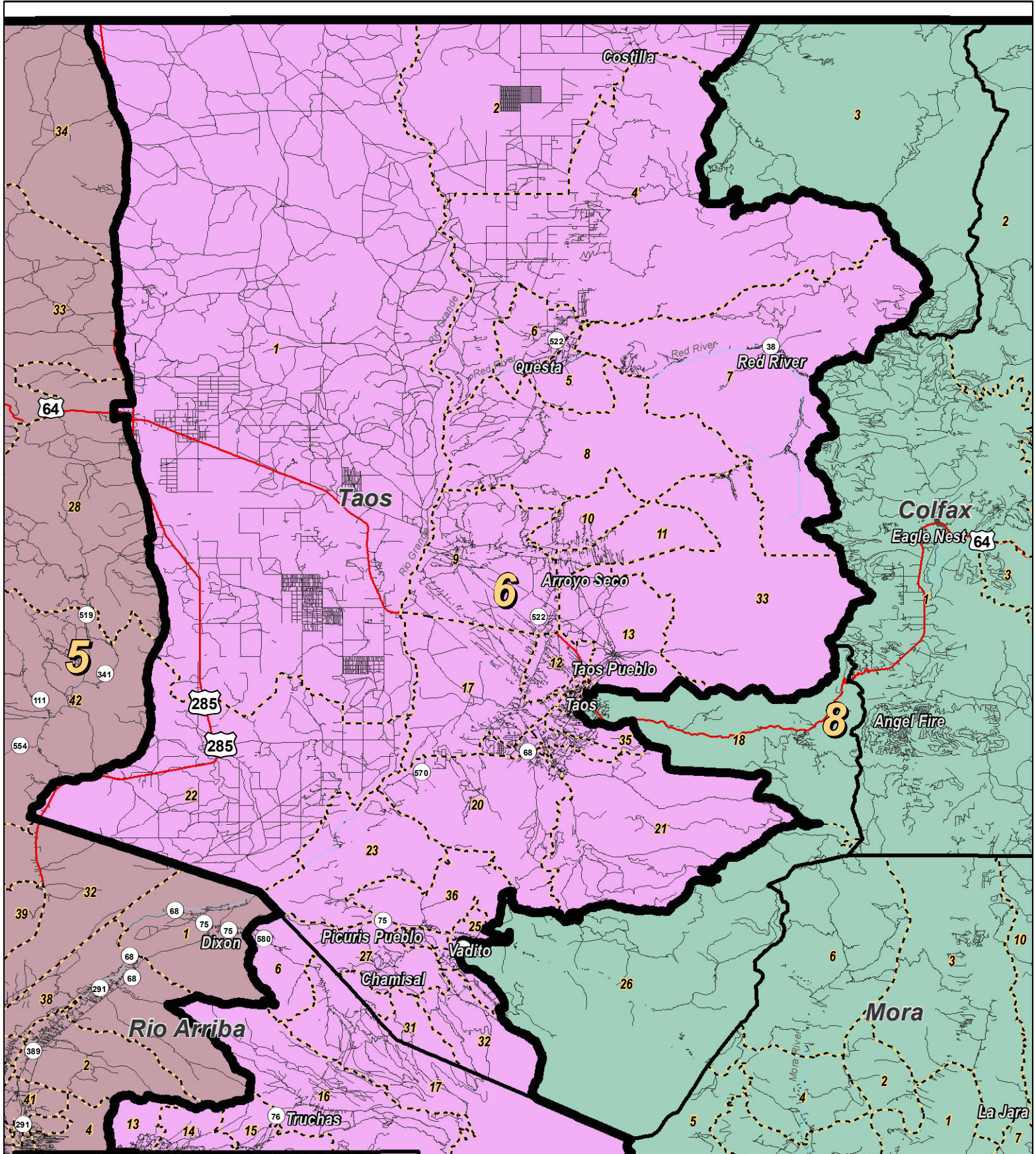
For the New Mexico Legislative Council Service



LEGEND Created: January 23, 2012

- ★ Legislators
- ▭ Precincts
- ▭ Counties
- ~ Rivers
- ~ Lakes / Ponds
- ~ Interstate
- ~ US Highway
- ~ State Highway

Research & Polling, Inc. distributes this map assuming no liability for any errors, omissions, or inaccuracies in the information provided regardless of the cause in reliance upon any maps.



RESEARCH & POLLING, INC.

For the New Mexico Legislative Council Service



LEGEND Created: January 30, 2012

Precincts	Rivers	Interstate
Counties	Lakes / Ponds	US Highway
		State Highway

Research & Polling, Inc. distributes this map assuming no liability for any errors, omissions, or inaccuracies in the information provided regardless of the cause in reliance upon any maps.

District: 5

District: 5				Adult Non-Hispanic		
County/ Precinct	Total Population	Adult Hispanic	Total Adult Native American	White	Native American	Black
LA 7	1,135	18.8%	2.7%	63.9%	1.1%	1.5%
LA 8	935	12.4%	1.5%	72.2%	0.6%	0.5%
LA 9	745	16.9%	2.0%	74.1%	0.6%	0.6%
LA 10	502	23.7%	1.5%	69.0%	0.5%	2.2%
LA 11	1,127	11.4%	2.0%	84.6%	0.6%	0.0%
LA 12	1,003	13.9%	1.5%	80.9%	1.2%	0.7%
LA 13	1,152	14.3%	1.5%	76.9%	0.4%	0.7%
LA 14	1,052	12.0%	1.9%	80.5%	1.1%	0.4%
LA 15	2,379	13.8%	1.7%	75.9%	0.6%	0.3%
LA 16	1,460	4.6%	1.1%	88.9%	0.4%	0.4%
LA 17	723	9.5%	0.4%	78.9%	0.4%	0.8%
RI 1	773	63.6%	4.6%	32.2%	1.4%	0.5%
RI 2	2,281	87.8%	3.6%	9.0%	1.8%	0.2%
RI 3	1,308	85.7%	6.1%	8.0%	5.1%	0.2%
RI 4	1,673	83.2%	4.9%	13.3%	2.0%	0.6%
RI 5	982	77.2%	16.8%	5.9%	15.3%	0.4%
RI 7	1,497	22.8%	77.4%	3.6%	71.1%	0.4%
RI 8	511	85.4%	5.2%	9.7%	2.7%	0.5%
RI 9	737	86.3%	4.4%	8.7%	2.5%	0.4%
RI 10	1,202	79.7%	4.3%	16.4%	2.4%	0.3%
RI 11	2,248	72.4%	3.4%	24.9%	1.1%	0.1%
RI 12	1,069	89.5%	2.2%	8.1%	1.4%	0.1%
RI 18	788	74.8%	1.5%	23.7%	0.6%	0.3%
RI 19	400	54.8%	3.6%	40.9%	1.2%	0.0%
RI 20	1,242	57.9%	5.8%	38.1%	2.1%	0.3%
RI 21	221	56.3%	20.9%	24.7%	16.5%	0.6%
RI 22	109	78.5%	2.2%	20.4%	1.1%	0.0%
RI 23	351	82.5%	1.8%	12.7%	1.5%	0.7%
RI 28	143	68.0%	4.1%	28.7%	1.6%	0.0%
RI 31	904	79.2%	1.8%	17.3%	0.1%	0.3%
RI 32	559	78.9%	2.0%	18.9%	0.0%	0.0%
RI 33	114	71.1%	0.0%	28.9%	0.0%	0.0%

District: 5

District: 5				Adult Non-Hispanic		
County/ Precinct	Total Population	Adult Hispanic	Total Adult Native American	White	Native American	Black
RI 34	42	79.4%	0.0%	17.6%	0.0%	0.0%
RI 35	788	57.4%	5.1%	37.2%	1.2%	0.2%
RI 36	3,182	88.8%	2.5%	9.0%	1.0%	0.0%
RI 37	398	92.7%	1.9%	6.0%	0.3%	0.0%
RI 38	1,953	81.5%	2.8%	15.7%	1.4%	0.1%
RI 39	2,119	69.8%	4.7%	24.1%	1.4%	0.5%
RI 40	1,967	84.7%	3.0%	11.2%	2.0%	0.4%
RI 41	1,422	20.3%	77.4%	6.6%	71.3%	0.5%
RI 42	302	70.4%	1.6%	27.1%	0.0%	2.0%
SD 51	0	?	?	?	?	?
SF 1	2,155	74.5%	2.6%	22.6%	0.8%	0.5%
SF 58	2,089	83.5%	3.1%	12.8%	1.0%	0.2%
SF 79	1,640	86.7%	2.8%	10.7%	1.6%	0.4%
District Totals	49,382	59.3%	7.6%	31.4%	5.6%	0.4%