

0 9 18 27 36 Miles

RESEARCH & POLLING INC.

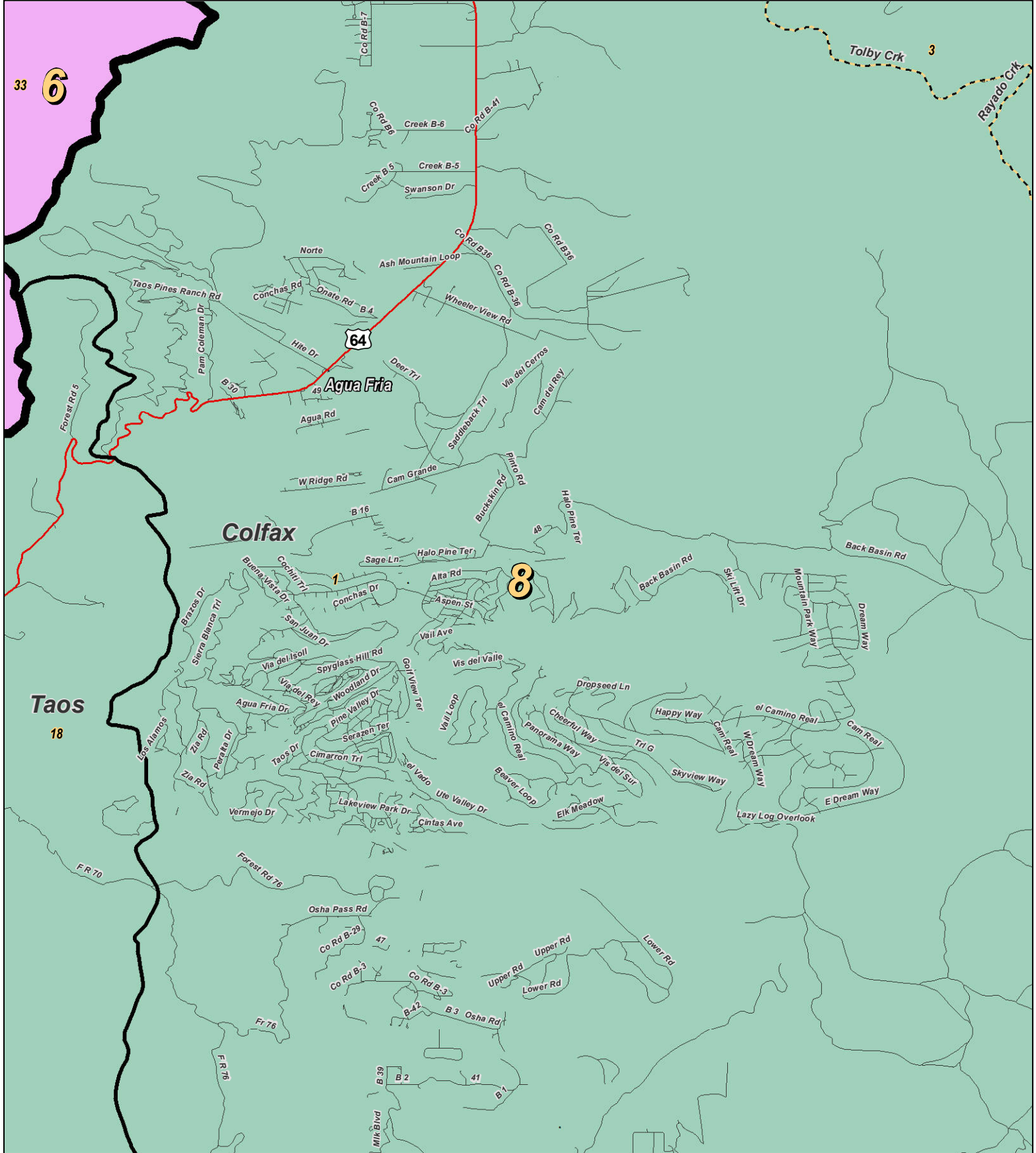
For the New Mexico Legislative Council Service



LEGEND Created: January 31, 2012

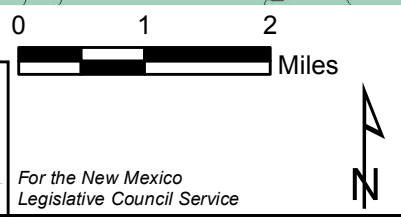
- Precincts (dashed line)
- Rivers (blue line)
- Interstate (thick red line)
- Counties (thick black line)
- Lakes / Ponds (blue shape)
- US Highway (red line)
- State Highway (thin red line)

Research & Polling, Inc. distributes this map assuming no liability for any errors, omissions, or inaccuracies in the information provided regardless of the cause in reliance upon any maps.



RESEARCH & POLLING INC.

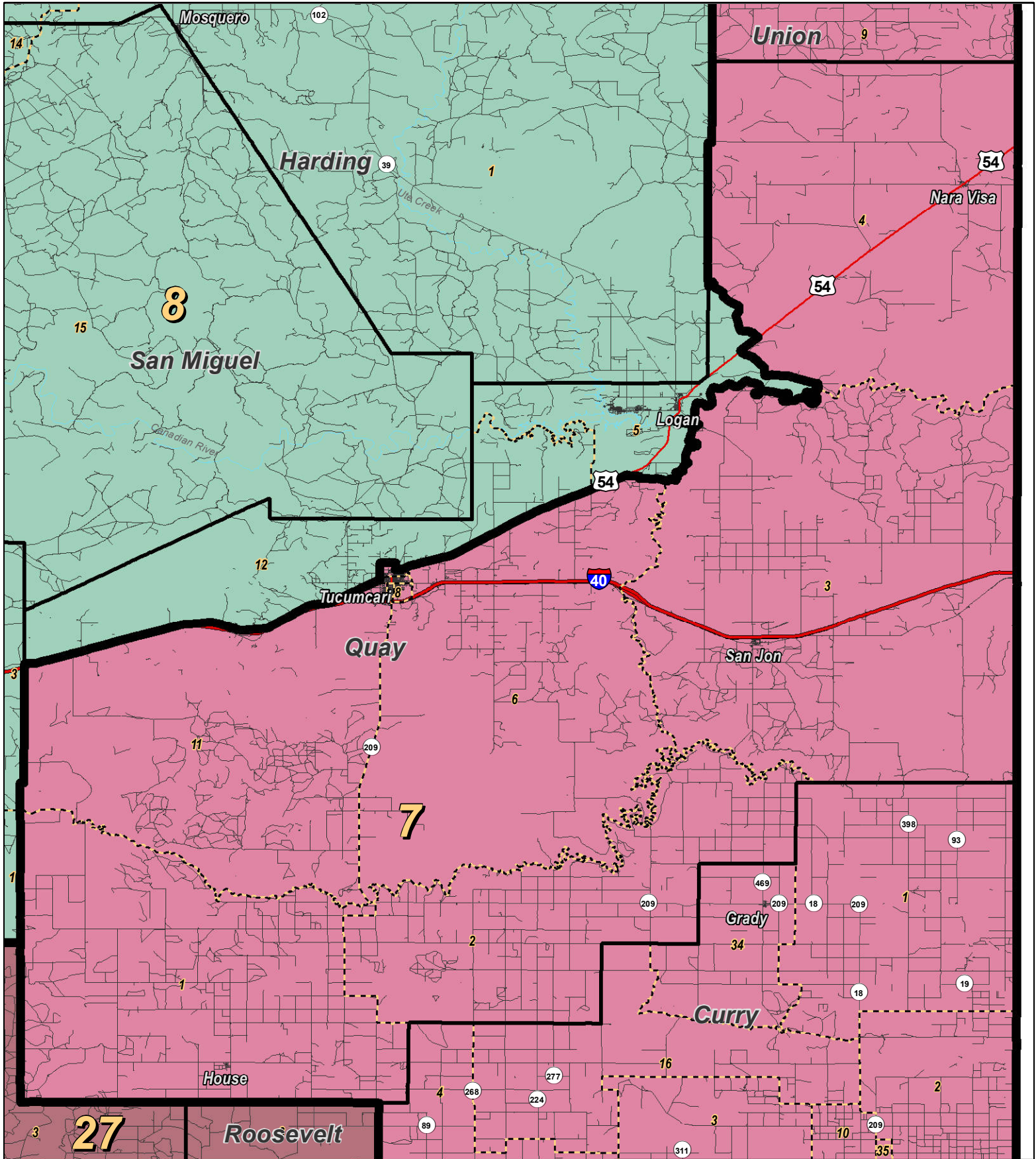
For the New Mexico Legislative Council Service



LEGEND Created: January 23, 2012

★ Legislators	~ Rivers	~ Interstate
▭ Precincts	☪ Lakes / Ponds	~ US Highway
▭ Counties		~ State Highway

Research & Polling, Inc. distributes this map assuming no liability for any errors, omissions, or inaccuracies in the information provided regardless of the cause in reliance upon any maps.



0 4 8 12 16 Miles

RESEARCH & POLLING INC.

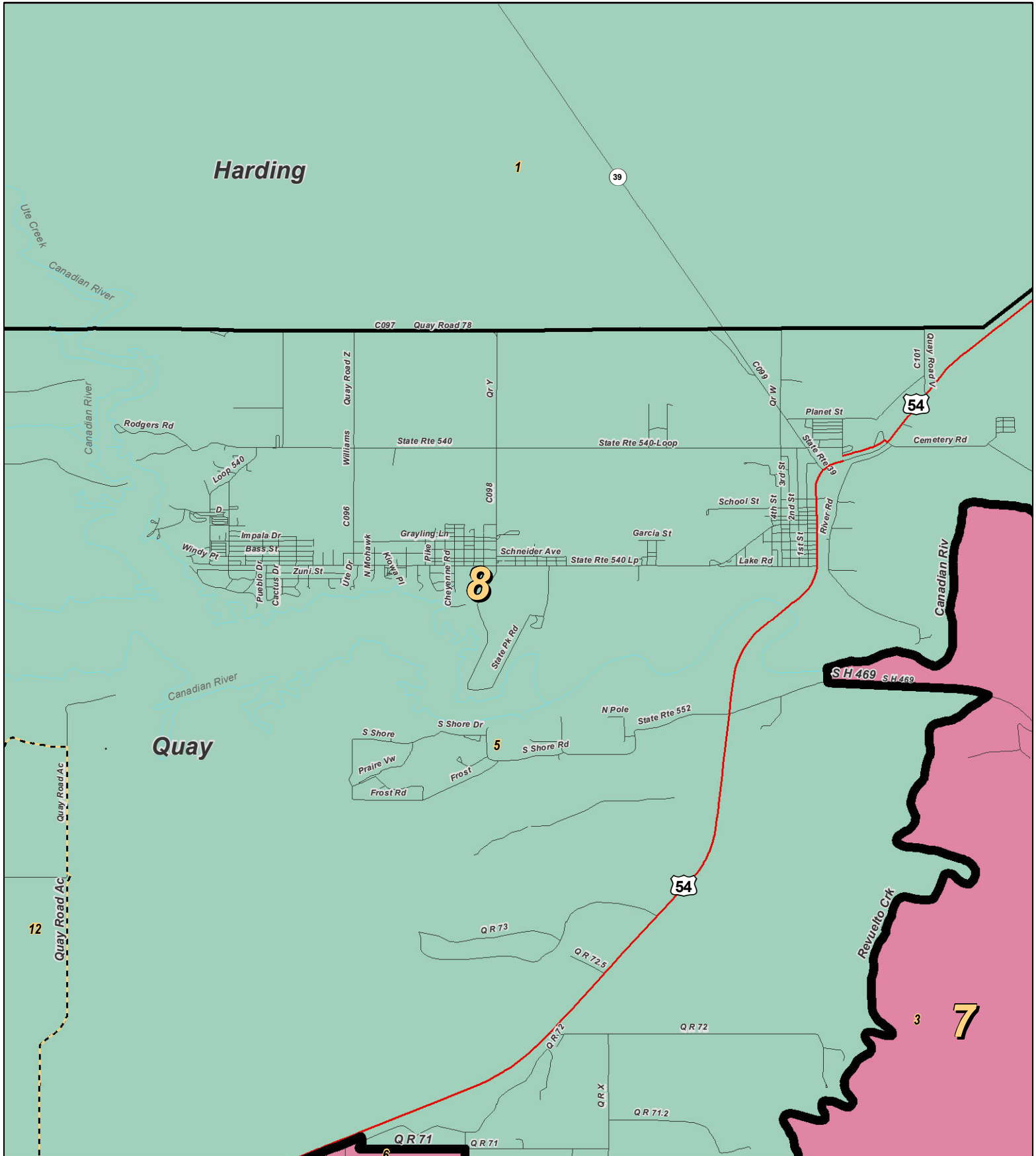
For the New Mexico Legislative Council Service



LEGEND Created: January 30, 2012

Precincts	Rivers	Interstate
Counties	Lakes / Ponds	US Highway
		State Highway

Research & Polling, Inc. distributes this map assuming no liability for any errors, omissions, or inaccuracies in the information provided regardless of the cause in reliance upon any maps.



0 1 Miles

RESEARCH & POLLING INC.

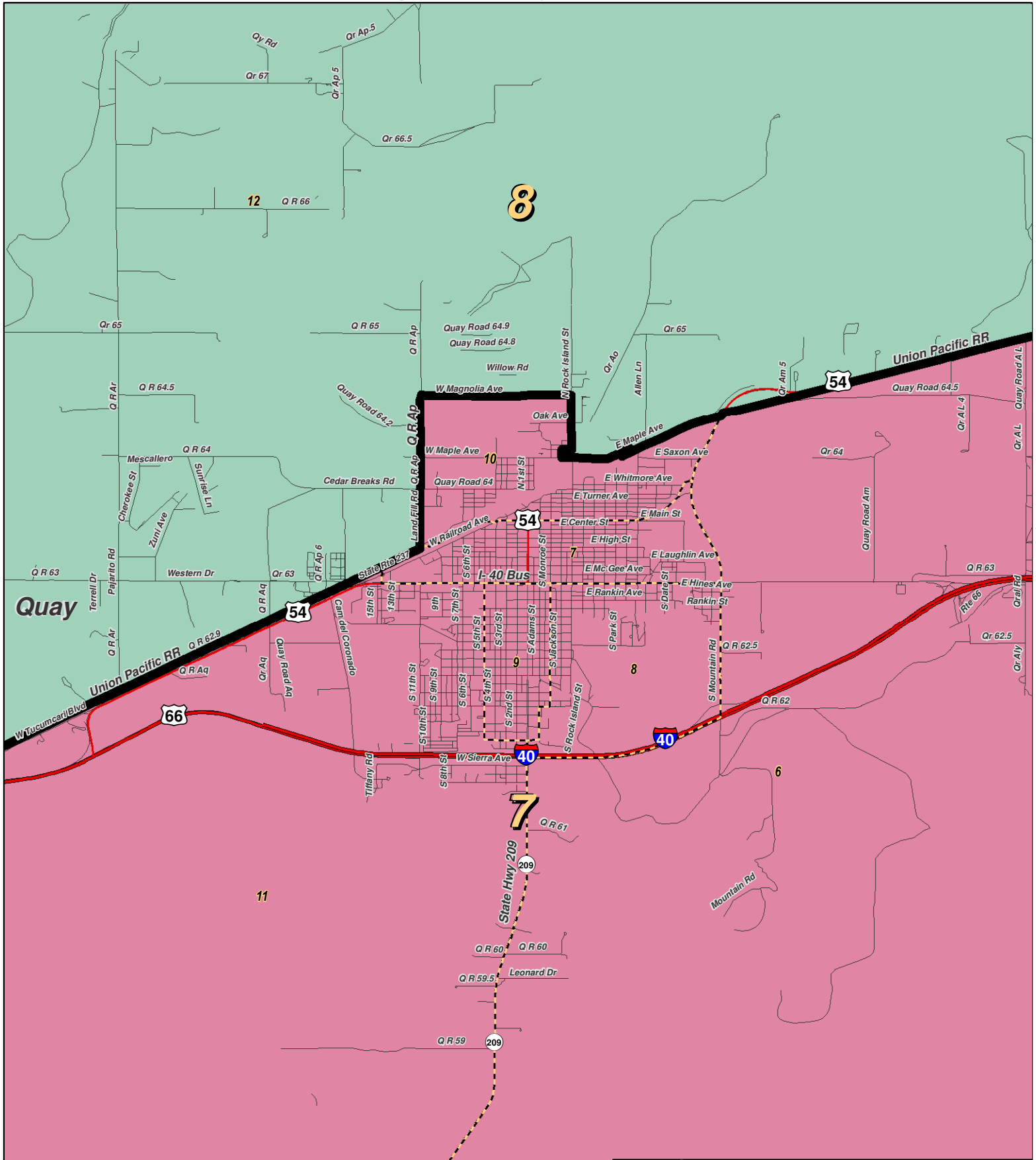
For the New Mexico Legislative Council Service



LEGEND Created: January 23, 2012

★ Legislators	~ Rivers	↔ Interstate
□ Precincts	☁ Lakes / Ponds	↔ US Highway
▭ Counties		~ State Highway

Research & Polling, Inc. distributes this map assuming no liability for any errors, omissions, or inaccuracies in the information provided regardless of the cause in reliance upon any maps.



RESEARCH & POLLING INC.

For the New Mexico Legislative Council Service

0 1 Miles

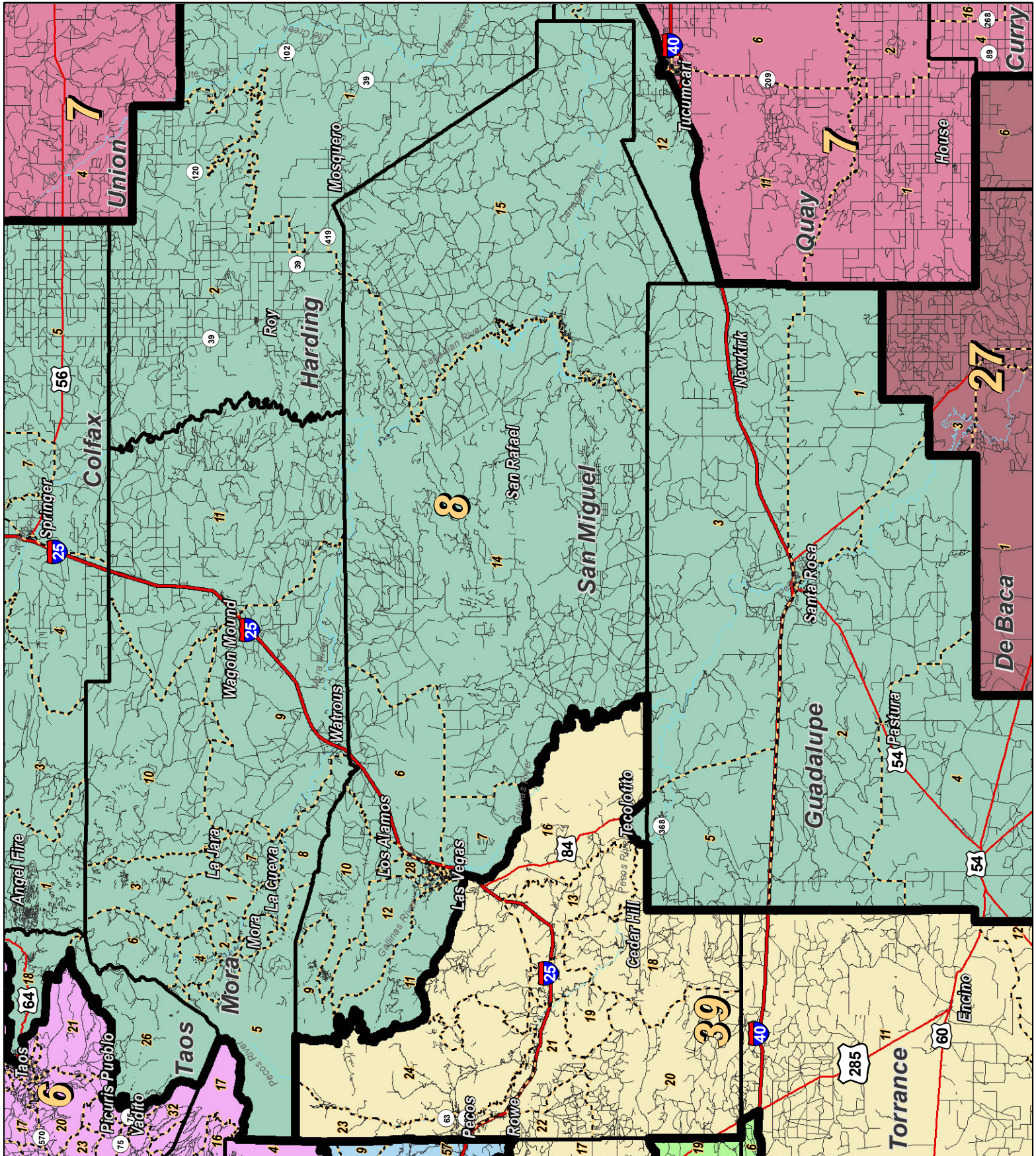
NEW MEXICO

LEGEND

Created: January 18, 2012

★ Legislators	~ Rivers	↗ Interstate
□ Precincts	☪ Lakes / Ponds	↘ US Highway
□ Counties		~ State Highway

Research & Polling, Inc. distributes this map assuming no liability for any errors, omissions, or inaccuracies in the information provided regardless of the cause in reliance upon any maps.



0 7 14 21 28 Miles

RESEARCH & POLLING INC.

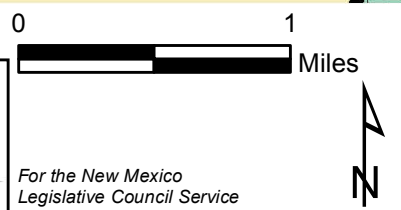
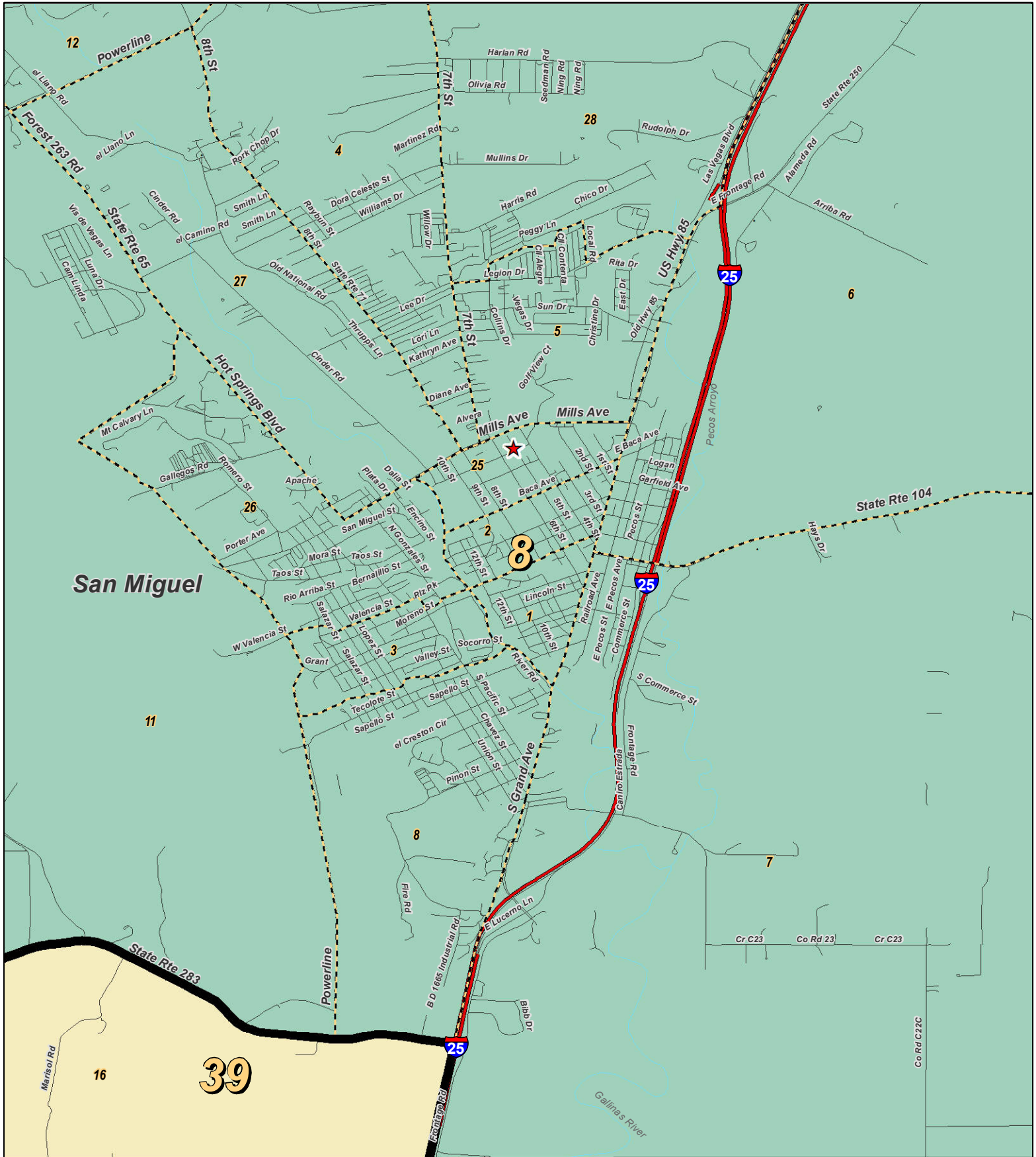
For the New Mexico Legislative Council Service



LEGEND Created: January 30, 2012

Precincts	Rivers	Interstate
Counties	Lakes / Ponds	US Highway
		State Highway

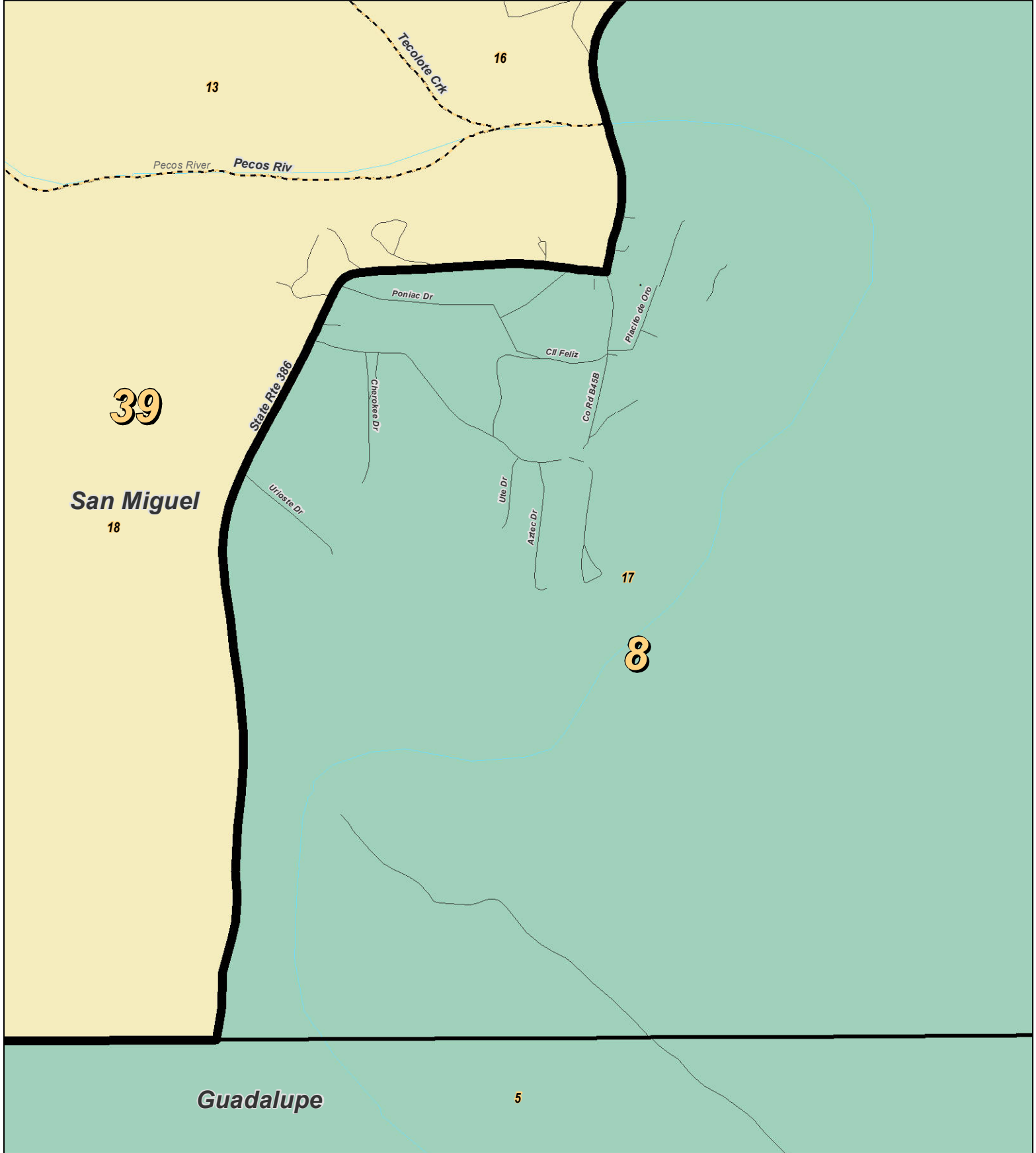
Research & Polling, Inc. distributes this map assuming no liability for any errors, omissions, or inaccuracies in the information provided regardless of the cause in reliance upon any maps.



LEGEND Created: January 23, 2012

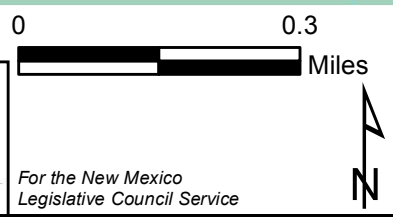
- ★ Legislators
- ▭ Precincts
- ▭ Counties
- ~ Rivers
- ~ Lakes / Ponds
- ~ Interstate
- ~ US Highway
- ~ State Highway

Research & Polling, Inc. distributes this map assuming no liability for any errors, omissions, or inaccuracies in the information provided regardless of the cause in reliance upon any maps.



RESEARCH & POLLING INC.

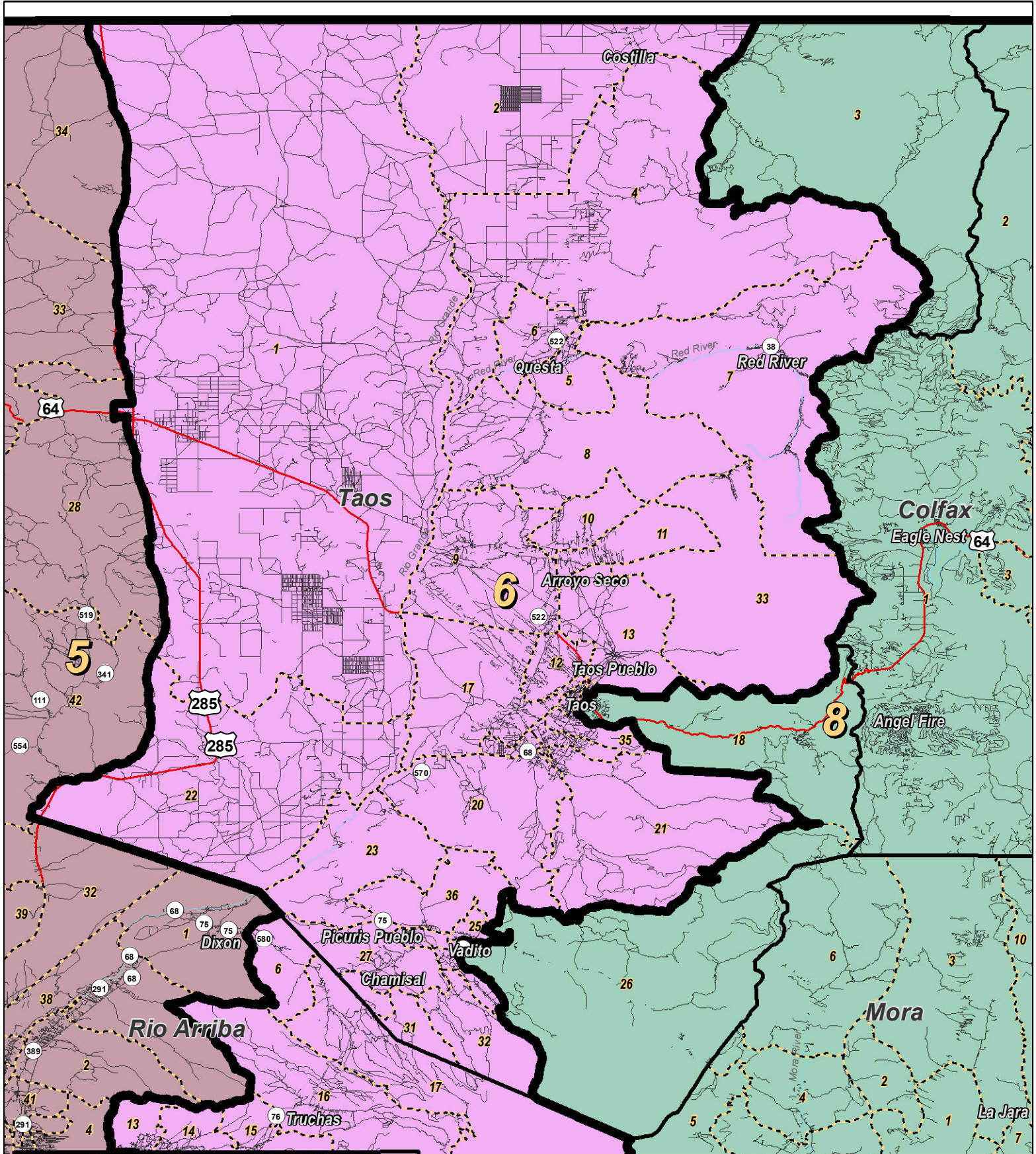
For the New Mexico Legislative Council Service



LEGEND Created: January 23, 2012

★ Legislators	~ Rivers	↗ Interstate
▭ Precincts	☁ Lakes / Ponds	↘ US Highway
▭ Counties		~ State Highway

Research & Polling, Inc. distributes this map assuming no liability for any errors, omissions, or inaccuracies in the information provided regardless of the cause in reliance upon any maps.



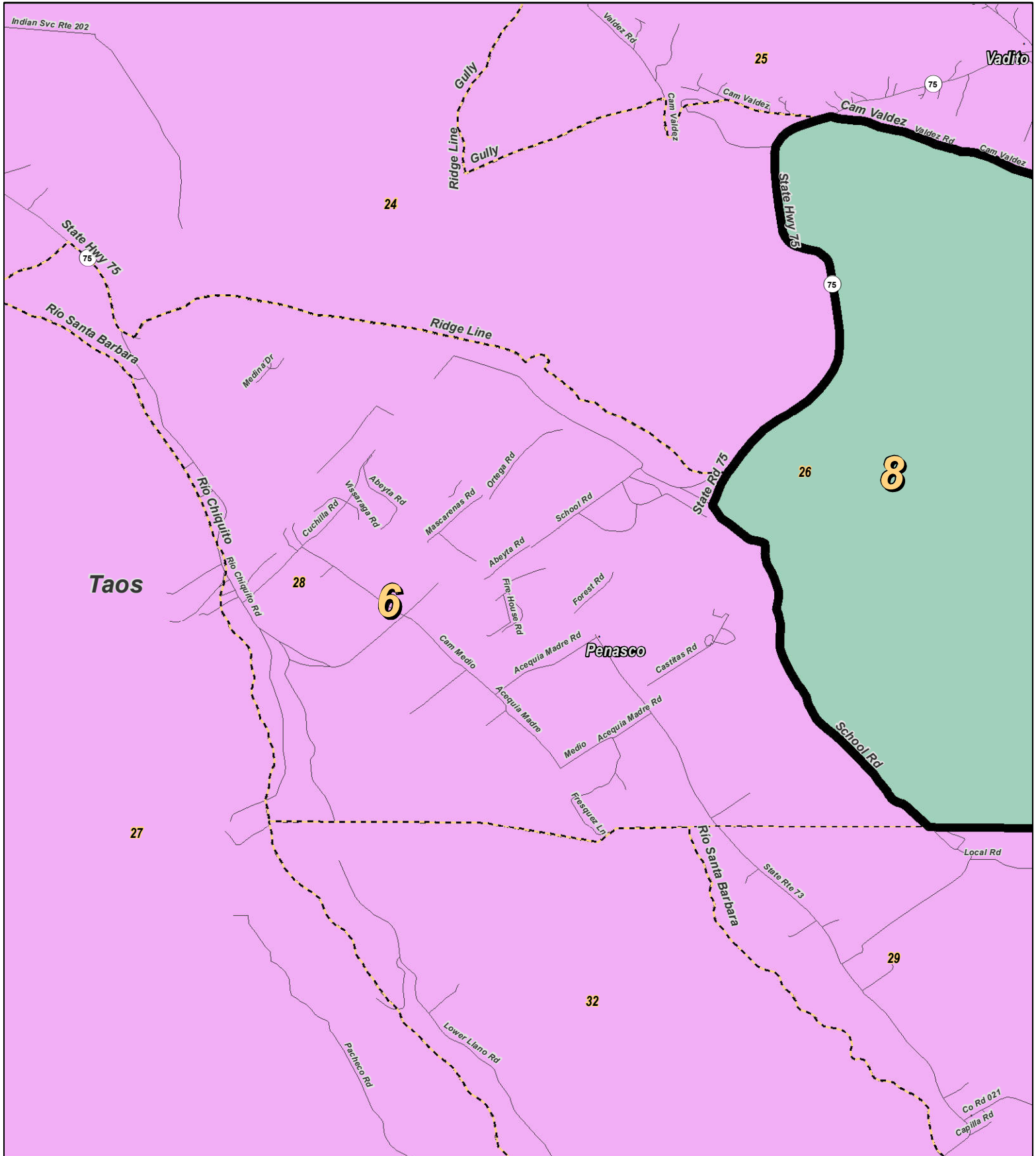
For the New Mexico Legislative Council Service



LEGEND Created: January 30, 2012

Precincts	Rivers	Interstate
Counties	Lakes / Ponds	US Highway
		State Highway

Research & Polling, Inc. distributes this map assuming no liability for any errors, omissions, or inaccuracies in the information provided regardless of the cause in reliance upon any maps.



0 0.5 Miles

RESEARCH & POLLING INC.

For the New Mexico Legislative Council Service



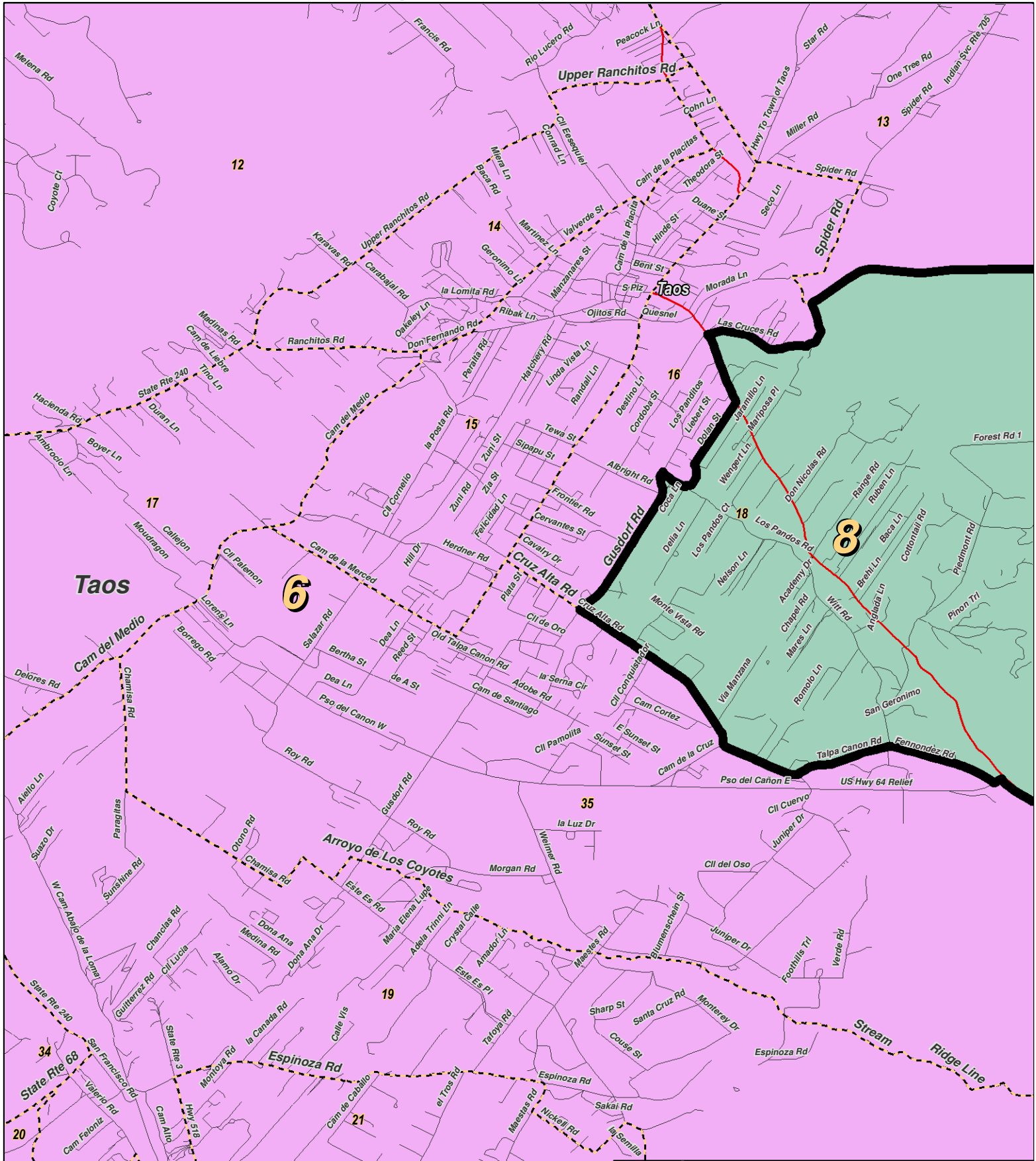
LEGEND Created: January 23, 2012

★ Legislators	~ Rivers	~ Interstate
□ Precincts	☪ Lakes / Ponds	~ US Highway
▭ Counties		~ State Highway

Research & Polling, Inc. distributes this map assuming no liability for any errors, omissions, or inaccuracies in the information provided regardless of the cause in reliance upon any maps.

Senate: Plaintiffs, Intervenor, and Executive Defendants Joint Plan (Court Adopted January 2012)

Taos



0 0.9 Miles

RESEARCH & POLLING INC.

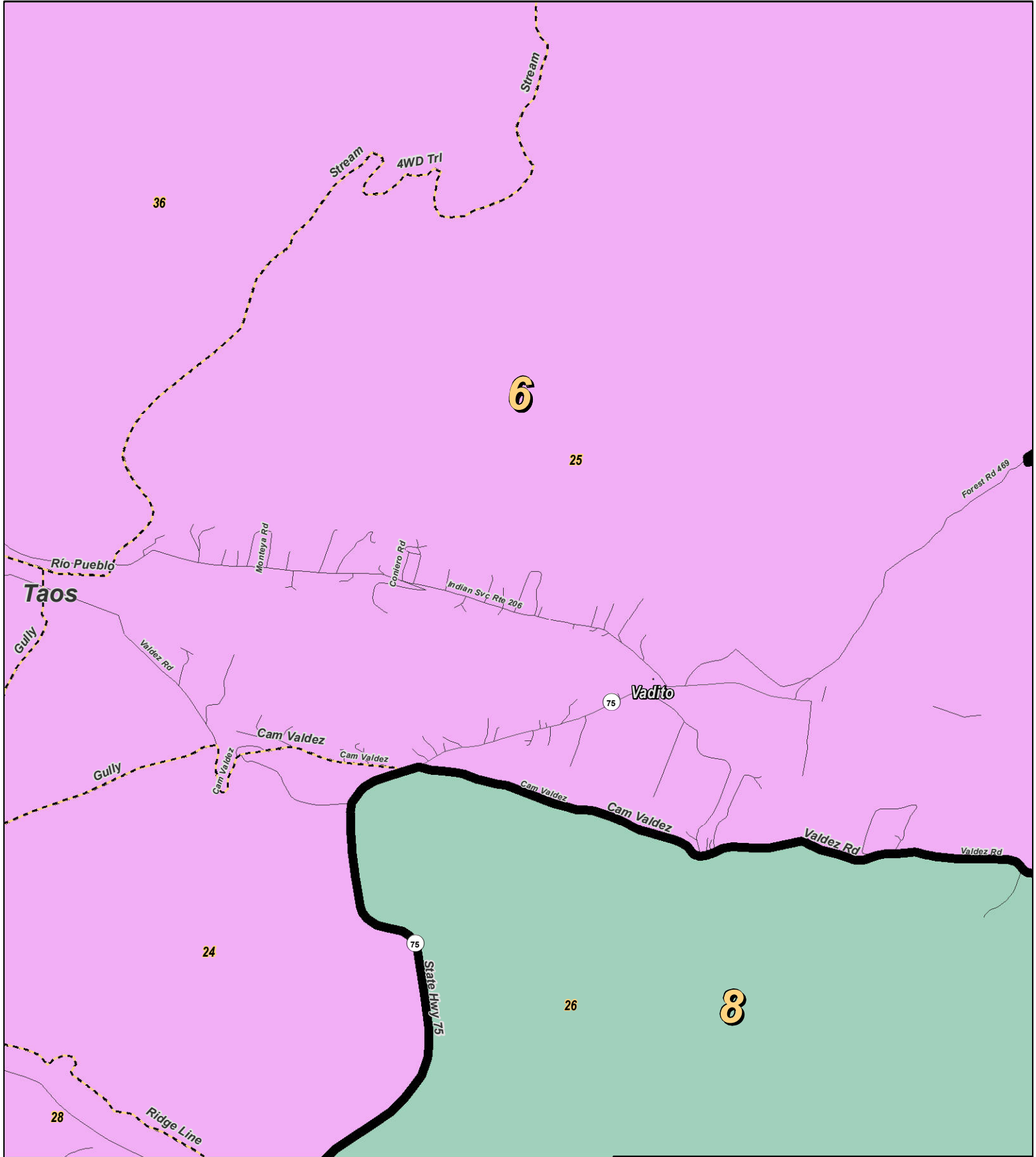
For the New Mexico Legislative Council Service



LEGEND Created: January 18, 2012

- ★ Legislators
- Precincts
- Counties
- ~ Rivers
- ~ Lakes / Ponds
- ~ Interstate
- ~ US Highway
- ~ State Highway

Research & Polling, Inc. distributes this map assuming no liability for any errors, omissions, or inaccuracies in the information provided regardless of the cause in reliance upon any maps.



RESEARCH & POLLING INC.

For the New Mexico Legislative Council Service

0 0.4 Miles



LEGEND Created: January 23, 2012

★ Legislators	~ Rivers	↔ Interstate
▭ Precincts	☁ Lakes / Ponds	↔ US Highway
▭ Counties		~ State Highway

Research & Polling, Inc. distributes this map assuming no liability for any errors, omissions, or inaccuracies in the information provided regardless of the cause in reliance upon any maps.

District: 8

District: 8				Adult Non-Hispanic		
County/ Precinct	Total Population	Adult Hispanic	Total Adult Native American	White	Native American	Black
CO 1	2,237	16.9%	1.8%	80.4%	0.5%	0.2%
CO 2	744	47.6%	2.3%	49.6%	0.7%	0.0%
CO 3	513	44.1%	2.5%	53.9%	1.0%	0.0%
CO 4	813	44.2%	8.5%	46.7%	5.7%	2.1%
CO 5	967	60.6%	1.8%	37.8%	0.1%	0.0%
CO 7	446	33.5%	3.6%	62.9%	1.2%	0.0%
CO 10	289	18.6%	3.1%	79.6%	0.4%	0.0%
CO 11	392	46.8%	5.2%	49.0%	2.9%	0.3%
CO 12	479	51.7%	2.3%	45.1%	0.3%	0.3%
CO 13	212	33.5%	3.6%	62.3%	0.6%	0.0%
CO 14	411	38.9%	2.1%	59.3%	0.6%	0.0%
CO 15	584	28.5%	3.3%	69.2%	0.6%	0.0%
CO 16	1,669	49.4%	2.5%	48.5%	0.8%	0.2%
CO 17	764	70.6%	2.2%	28.0%	0.2%	0.3%
CO 18	194	68.6%	2.9%	29.1%	0.0%	1.2%
CO 19	433	79.9%	2.2%	15.3%	1.3%	0.3%
CO 20	843	68.7%	3.7%	28.4%	1.0%	0.8%
CO 21	981	50.7%	2.5%	47.7%	0.3%	0.1%
CO 22	779	29.0%	2.2%	69.0%	0.5%	0.0%
GU 1	996	80.2%	1.6%	16.7%	0.9%	0.1%
GU 2	1,672	69.6%	4.1%	21.2%	2.0%	4.1%
GU 3	949	79.9%	3.2%	18.8%	0.4%	0.3%
GU 4	496	81.5%	2.6%	15.6%	0.8%	0.8%
GU 5	574	84.9%	3.3%	12.7%	0.5%	0.7%
HA 1	306	36.9%	1.9%	63.1%	0.0%	0.0%
HA 2	389	45.9%	1.8%	52.9%	0.3%	0.6%
MO 1	905	81.3%	1.5%	17.7%	0.0%	0.7%
MO 2	778	84.6%	3.1%	14.4%	0.2%	0.2%
MO 3	380	71.1%	1.9%	27.7%	0.3%	0.0%
MO 4	474	82.5%	3.5%	15.5%	0.6%	0.0%
MO 5	452	73.8%	0.6%	25.4%	0.0%	0.6%
MO 6	282	78.8%	4.5%	19.8%	1.4%	0.0%

**NM Senate
Plaintiffs, Intervenors, and Executive Defendants Joint
(Court Adopted January 2012)**

District: 8

District: 8				Adult Non-Hispanic		
County/ Precinct	Total Population	Adult Hispanic	Total Adult Native American	White	Native American	Black
MO 7	238	79.3%	1.6%	19.7%	0.0%	0.5%
MO 8	395	83.2%	4.1%	15.9%	0.6%	0.0%
MO 9	291	68.6%	3.9%	30.0%	1.0%	0.5%
MO 10	296	67.2%	1.6%	30.8%	0.0%	0.0%
MO 11	390	78.6%	2.8%	20.1%	0.6%	0.0%
QU 5	1,114	16.8%	1.9%	81.3%	0.6%	0.3%
QU 12	731	30.7%	2.2%	66.6%	0.9%	0.5%
SM 1	748	57.6%	5.2%	29.6%	3.9%	4.4%
SM 2	1,449	55.4%	6.4%	26.6%	4.6%	8.8%
SM 3	936	84.1%	3.1%	12.8%	1.2%	0.7%
SM 4	2,072	80.7%	2.1%	17.0%	0.5%	0.9%
SM 5	1,886	82.2%	1.9%	15.5%	0.4%	0.9%
SM 6	779	81.5%	4.6%	14.9%	0.7%	0.0%
SM 7	958	83.6%	2.8%	14.0%	0.4%	0.3%
SM 8	2,161	87.8%	2.6%	10.8%	0.5%	0.4%
SM 9	387	48.1%	1.3%	49.7%	0.0%	0.0%
SM 10	732	58.4%	2.1%	40.2%	0.2%	0.0%
SM 11	847	62.3%	1.1%	30.0%	0.0%	2.9%
SM 12	1,109	74.3%	2.0%	22.5%	0.6%	1.1%
SM 14	228	58.6%	1.0%	39.4%	0.0%	1.0%
SM 15	253	22.5%	1.3%	75.8%	0.0%	0.4%
SM 17	215	90.2%	0.7%	9.8%	0.0%	0.0%
SM 25	680	67.6%	2.6%	25.5%	0.9%	2.4%
SM 26	2,081	79.0%	3.9%	16.4%	1.0%	1.7%
SM 27	1,466	80.1%	1.4%	18.8%	0.2%	0.5%
SM 28	1,294	85.7%	1.7%	11.2%	0.3%	1.9%
TA 3	164	80.1%	0.7%	19.1%	0.0%	0.0%
TA 18	1,622	36.5%	3.9%	58.9%	2.5%	0.4%
TA 26	210	47.0%	1.1%	30.3%	0.5%	0.0%
District Totals	48,135	62.5%	2.8%	33.8%	0.9%	1.0%