

0 6 12 18 24 Miles

**RESEARCH & POLLING INC.**

For the New Mexico Legislative Council Service

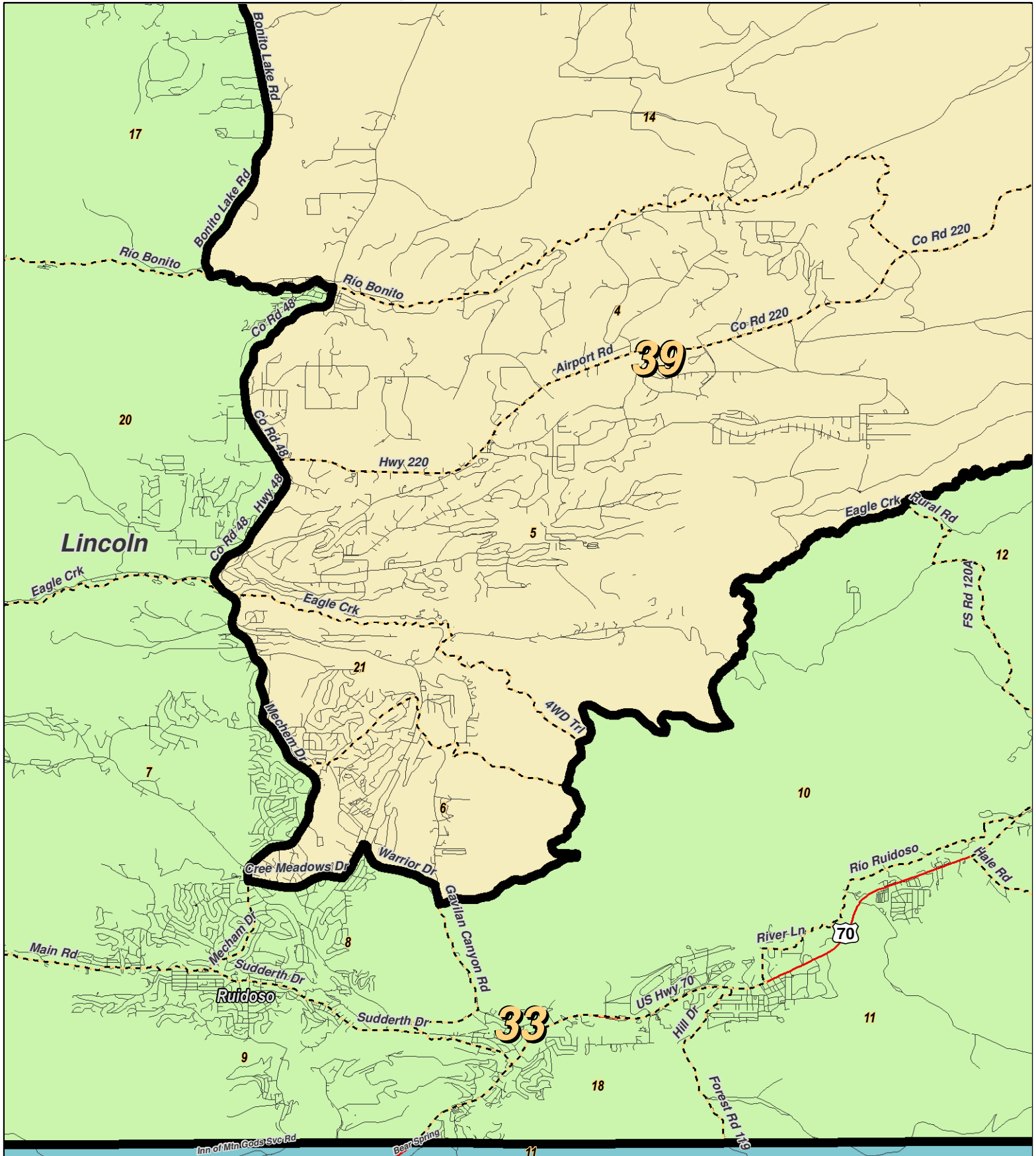


**LEGEND** Created: January 31, 2012

- Precincts
- Counties
- Rivers
- Lakes / Ponds
- Interstate
- US Highway
- State Highway

Research & Polling, Inc. distributes this map assuming no liability for any errors, omissions, or inaccuracies in the information provided regardless of the cause in reliance upon any maps.





0 1 2 Miles

**RESEARCH & POLLING INC.**

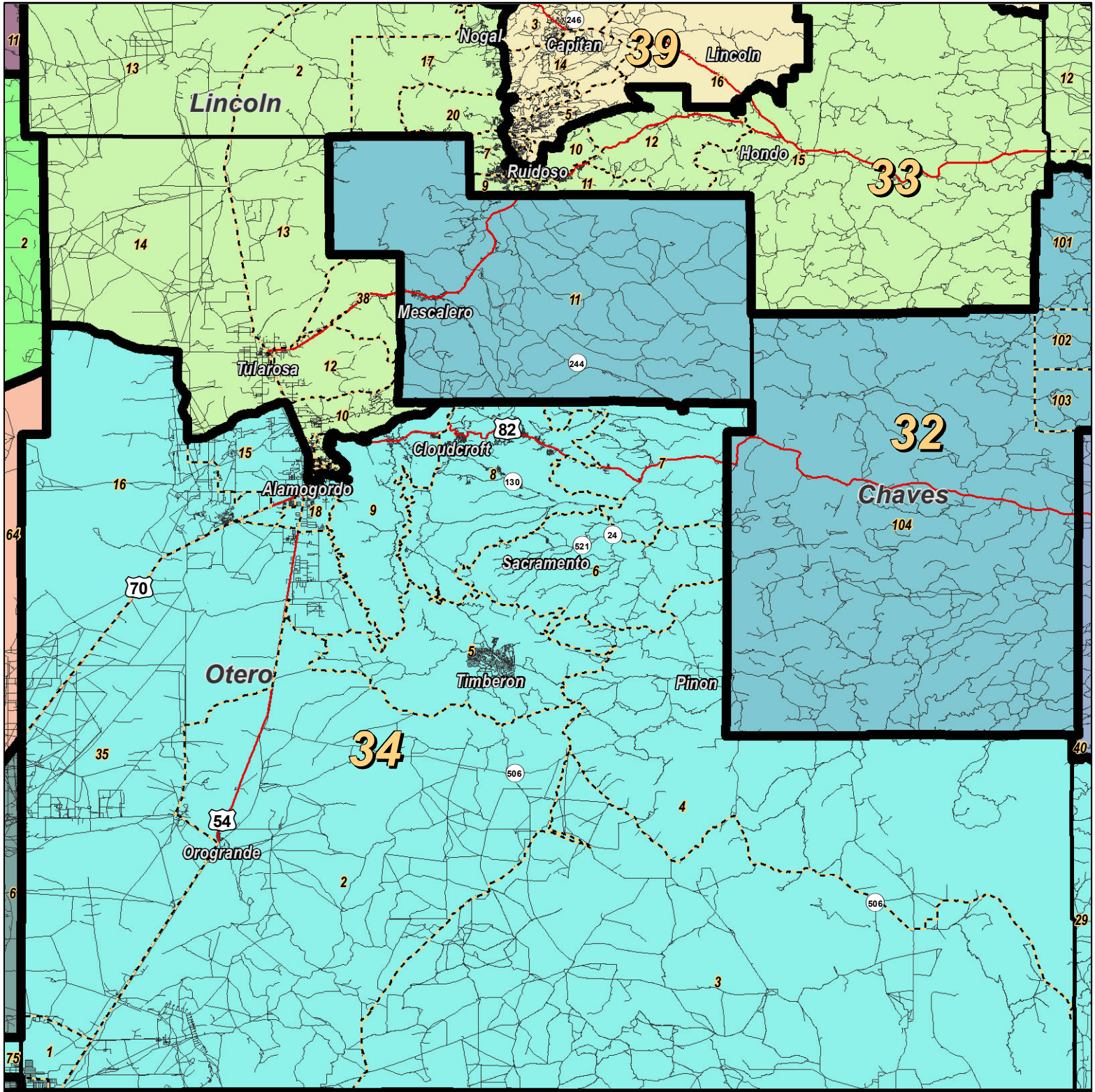
For the New Mexico Legislative Council Service



**LEGEND** Created: January 18, 2012

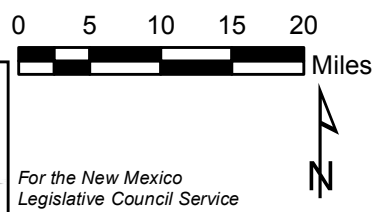
- ★ Legislators
- Precincts
- Counties
- ~ Rivers
- ~ Lakes / Ponds
- Interstate
- US Highway
- State Highway

Research & Polling, Inc. distributes this map assuming no liability for any errors, omissions, or inaccuracies in the information provided regardless of the cause in reliance upon any maps.



**RESEARCH & POLLING, INC.**

For the New Mexico Legislative Council Service

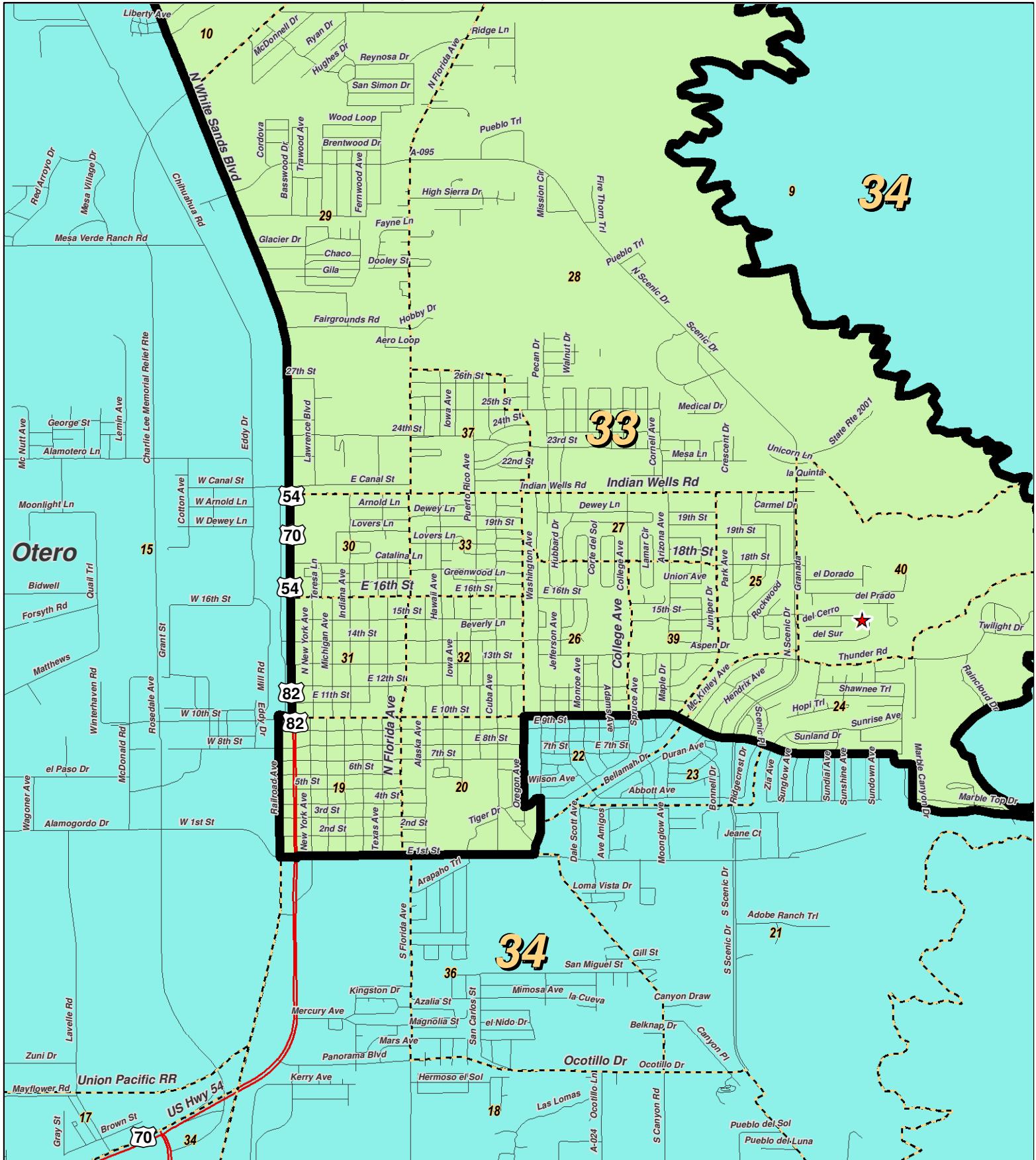


**LEGEND** Created: January 30, 2012

|           |               |               |
|-----------|---------------|---------------|
| Precincts | Rivers        | Interstate    |
| Counties  | Lakes / Ponds | US Highway    |
|           |               | State Highway |

Research & Polling, Inc. distributes this map assuming no liability for any errors, omissions, or inaccuracies in the information provided regardless of the cause in reliance upon any maps.





0 1 Miles

**RESEARCH & POLLING**  
INC.

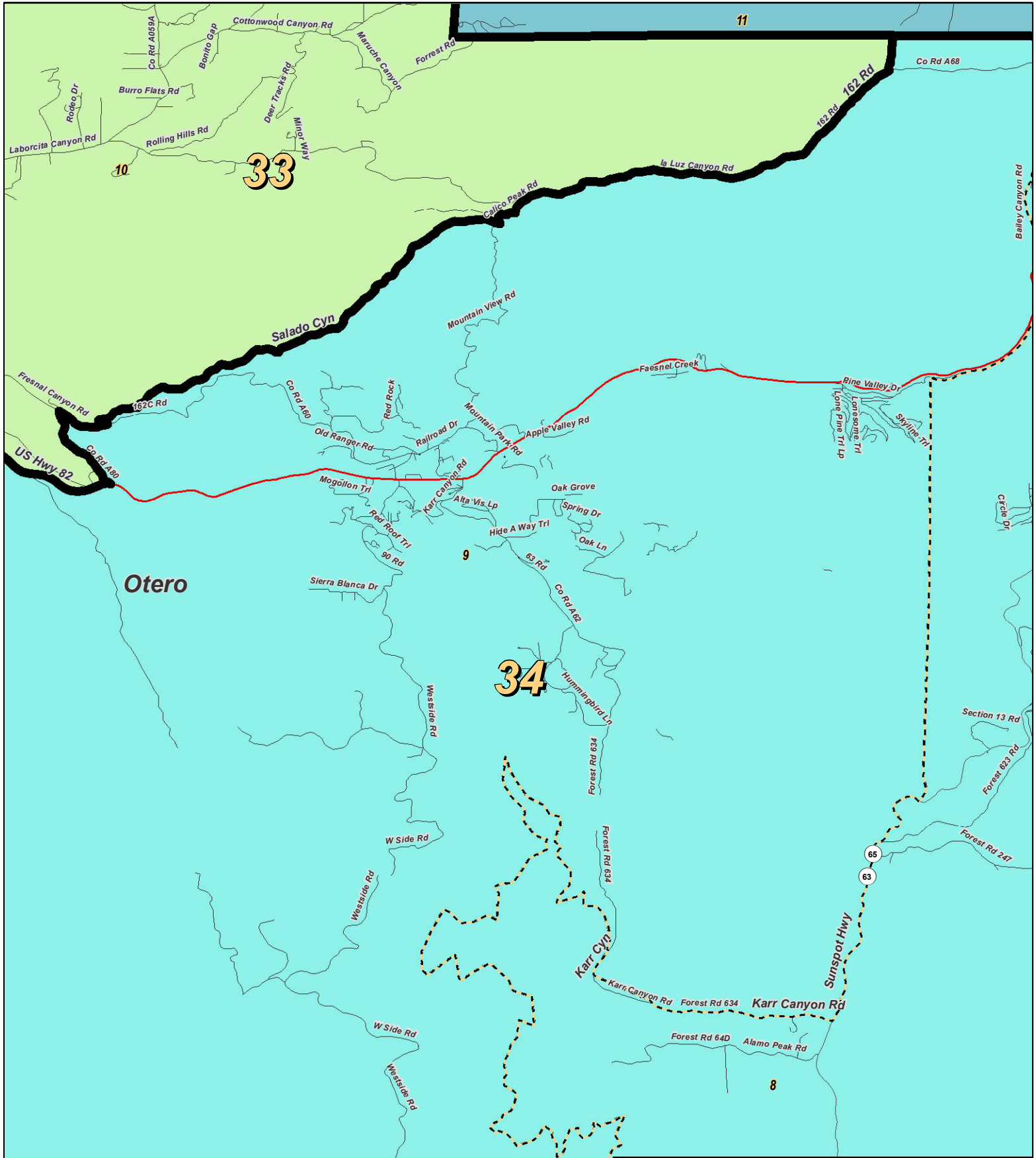
For the New Mexico  
Legislative Council Service



**LEGEND** Created: January 18, 2012

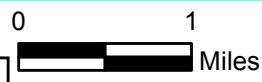
- ★ Legislators
- ▣ Precincts
- ▭ Counties
- ~ Rivers
- ~ Lakes / Ponds
- ~ Interstate
- ~ US Highway
- ~ State Highway

Research & Polling, Inc. distributes this map assuming no liability for any errors, omissions, or inaccuracies in the information provided regardless of the cause in reliance upon any maps.



**RESEARCH & POLLING INC.**

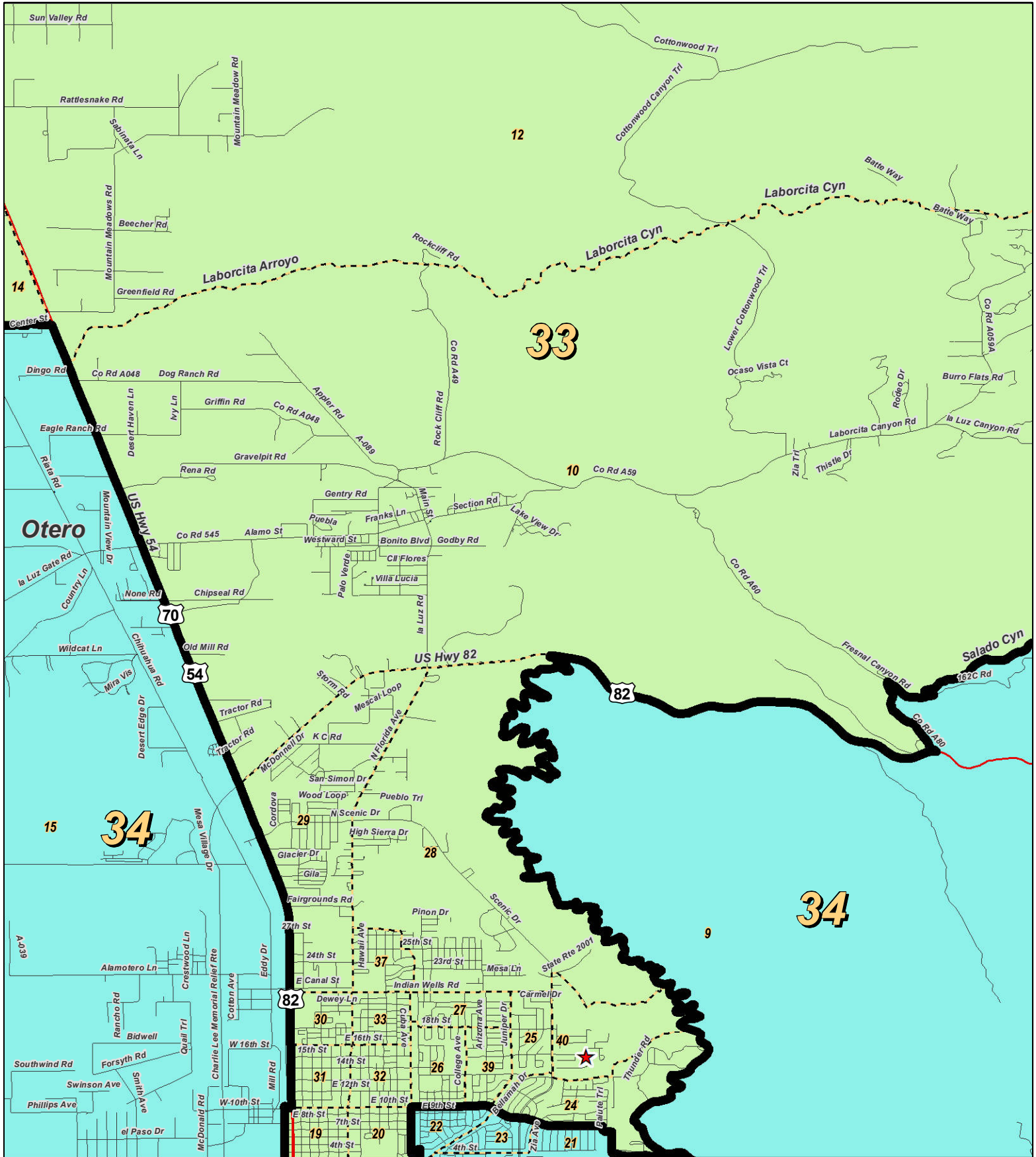
For the New Mexico Legislative Council Service



**LEGEND** Created: January 23, 2012

|               |                 |                 |
|---------------|-----------------|-----------------|
| ★ Legislators | ~ Rivers        | ↯ Interstate    |
| ▭ Precincts   | ☪ Lakes / Ponds | ↯ US Highway    |
| ▭ Counties    |                 | ↯ State Highway |

Research & Polling, Inc. distributes this map assuming no liability for any errors, omissions, or inaccuracies in the information provided regardless of the cause in reliance upon any maps.



0 1 Miles

**RESEARCH & POLLING INC.**

For the New Mexico Legislative Council Service

NEW MEXICO

**LEGEND** Created: January 23, 2012

- ★ Legislators
- ▭ Precincts
- ▭ Counties
- ~ Rivers
- ☪ Lakes / Ponds
- ⚡ Interstate
- ⚡ US Highway
- ⚡ State Highway

Research & Polling, Inc. distributes this map assuming no liability for any errors, omissions, or inaccuracies in the information provided regardless of the cause in reliance upon any maps.

**NM Senate  
Plaintiffs, Intervenors, and Executive Defendants Joint  
(Court Adopted January 2012)**

**2010 Census  
Redistricting**

**District: 33**

|                     |                     |                   |                                | Adult Non-Hispanic |                    |       |
|---------------------|---------------------|-------------------|--------------------------------|--------------------|--------------------|-------|
| County/<br>Precinct | Total<br>Population | Adult<br>Hispanic | Total Adult<br>Native American | White              | Native<br>American | Black |
| CH 11               | 1,469               | 13.5%             | 0.7%                           | 84.1%              | 0.2%               | 0.1%  |
| CH 12               | 668                 | 15.8%             | 1.7%                           | 81.9%              | 0.8%               | 0.6%  |
| CH 13               | 1,301               | 48.9%             | 1.5%                           | 47.4%              | 0.6%               | 1.8%  |
| CH 21               | 1,499               | 22.7%             | 0.6%                           | 75.6%              | 0.2%               | 0.4%  |
| CH 22               | 1,085               | 25.4%             | 1.8%                           | 71.5%              | 1.0%               | 0.7%  |
| CH 35               | 1,167               | 44.5%             | 3.0%                           | 50.4%              | 1.0%               | 2.1%  |
| CH 36               | 1,462               | 38.1%             | 1.2%                           | 59.6%              | 0.7%               | 0.8%  |
| CH 84               | 1,188               | 43.3%             | 1.5%                           | 54.0%              | 0.2%               | 1.5%  |
| CH 85               | 698                 | 37.5%             | 2.3%                           | 57.7%              | 1.0%               | 1.3%  |
| LI 2                | 466                 | 51.1%             | 1.3%                           | 46.6%              | 0.5%               | 0.5%  |
| LI 7                | 1,966               | 22.9%             | 2.7%                           | 74.3%              | 1.2%               | 0.2%  |
| LI 8                | 1,506               | 19.4%             | 2.9%                           | 76.4%              | 1.9%               | 0.5%  |
| LI 9                | 1,956               | 25.6%             | 3.8%                           | 69.5%              | 2.9%               | 0.6%  |
| LI 10               | 985                 | 45.0%             | 8.4%                           | 46.4%              | 7.0%               | 0.3%  |
| LI 11               | 2,147               | 45.4%             | 4.2%                           | 49.4%              | 3.1%               | 0.6%  |
| LI 12               | 710                 | 42.2%             | 2.3%                           | 55.3%              | 1.2%               | 0.2%  |
| LI 13               | 745                 | 27.9%             | 4.7%                           | 66.7%              | 3.3%               | 0.3%  |
| LI 15               | 560                 | 46.5%             | 0.7%                           | 52.3%              | 0.0%               | 0.2%  |
| LI 17               | 433                 | 7.9%              | 1.6%                           | 90.2%              | 1.1%               | 0.0%  |
| LI 18               | 895                 | 31.5%             | 2.9%                           | 64.9%              | 1.8%               | 0.5%  |
| LI 20               | 351                 | 10.6%             | 1.2%                           | 88.2%              | 0.0%               | 0.0%  |
| OT 10               | 2,683               | 22.6%             | 1.8%                           | 74.9%              | 0.9%               | 0.3%  |
| OT 12               | 1,710               | 30.0%             | 5.8%                           | 63.5%              | 3.4%               | 0.5%  |
| OT 13               | 1,406               | 50.2%             | 6.4%                           | 44.1%              | 3.4%               | 0.6%  |
| OT 14               | 2,257               | 32.9%             | 5.3%                           | 62.3%              | 1.5%               | 0.9%  |
| OT 19               | 775                 | 69.1%             | 3.1%                           | 20.6%              | 1.6%               | 6.5%  |
| OT 20               | 670                 | 49.7%             | 3.4%                           | 34.7%              | 1.6%               | 10.1% |
| OT 24               | 1,775               | 24.5%             | 2.1%                           | 66.8%              | 0.6%               | 4.6%  |
| OT 25               | 1,088               | 22.2%             | 2.1%                           | 68.9%              | 0.5%               | 4.4%  |
| OT 26               | 1,145               | 29.4%             | 1.8%                           | 57.8%              | 0.3%               | 7.2%  |
| OT 27               | 996                 | 20.5%             | 2.4%                           | 70.2%              | 1.2%               | 4.7%  |
| OT 28               | 2,136               | 21.3%             | 1.8%                           | 71.7%              | 1.0%               | 2.8%  |

**District: 33**

| <b>District: 33</b>         |                             |                           |  | <b>Adult Non-Hispanic</b> |                            |              |
|-----------------------------|-----------------------------|---------------------------|--|---------------------------|----------------------------|--------------|
| <b>County/<br/>Precinct</b> | <b>Total<br/>Population</b> | <b>Adult<br/>Hispanic</b> | <b>Total Adult<br/>Native American</b> | <b>White</b>              | <b>Native<br/>American</b> | <b>Black</b> |
| OT 29                       | 2,625                       | 16.3%                     | 1.2%                                   | 76.2%                     | 0.6%                       | 3.7%         |
| OT 30                       | 890                         | 29.2%                     | 4.6%                                   | 63.5%                     | 1.9%                       | 2.1%         |
| OT 31                       | 826                         | 34.8%                     | 4.0%                                   | 58.1%                     | 1.8%                       | 2.9%         |
| OT 32                       | 1,059                       | 34.3%                     | 3.8%                                   | 55.4%                     | 1.1%                       | 4.7%         |
| OT 33                       | 1,072                       | 34.2%                     | 2.7%                                   | 58.1%                     | 0.5%                       | 3.5%         |
| OT 37                       | 926                         | 26.2%                     | 1.8%                                   | 64.9%                     | 0.1%                       | 4.0%         |
| OT 38                       | 265                         | 28.4%                     | 7.9%                                   | 64.7%                     | 6.0%                       | 0.0%         |
| OT 39                       | 1,107                       | 25.1%                     | 1.5%                                   | 67.4%                     | 0.6%                       | 4.1%         |
| OT 40                       | 829                         | 11.9%                     | 2.2%                                   | 77.1%                     | 0.6%                       | 4.8%         |
| <b>District Totals</b>      | <b>49,497</b>               | <b>29.9%</b>              | <b>2.8%</b>                            | <b>64.4%</b>              | <b>1.4%</b>                | <b>2.0%</b>  |