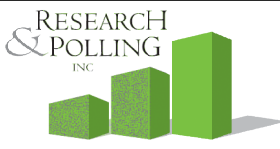


LEGEND

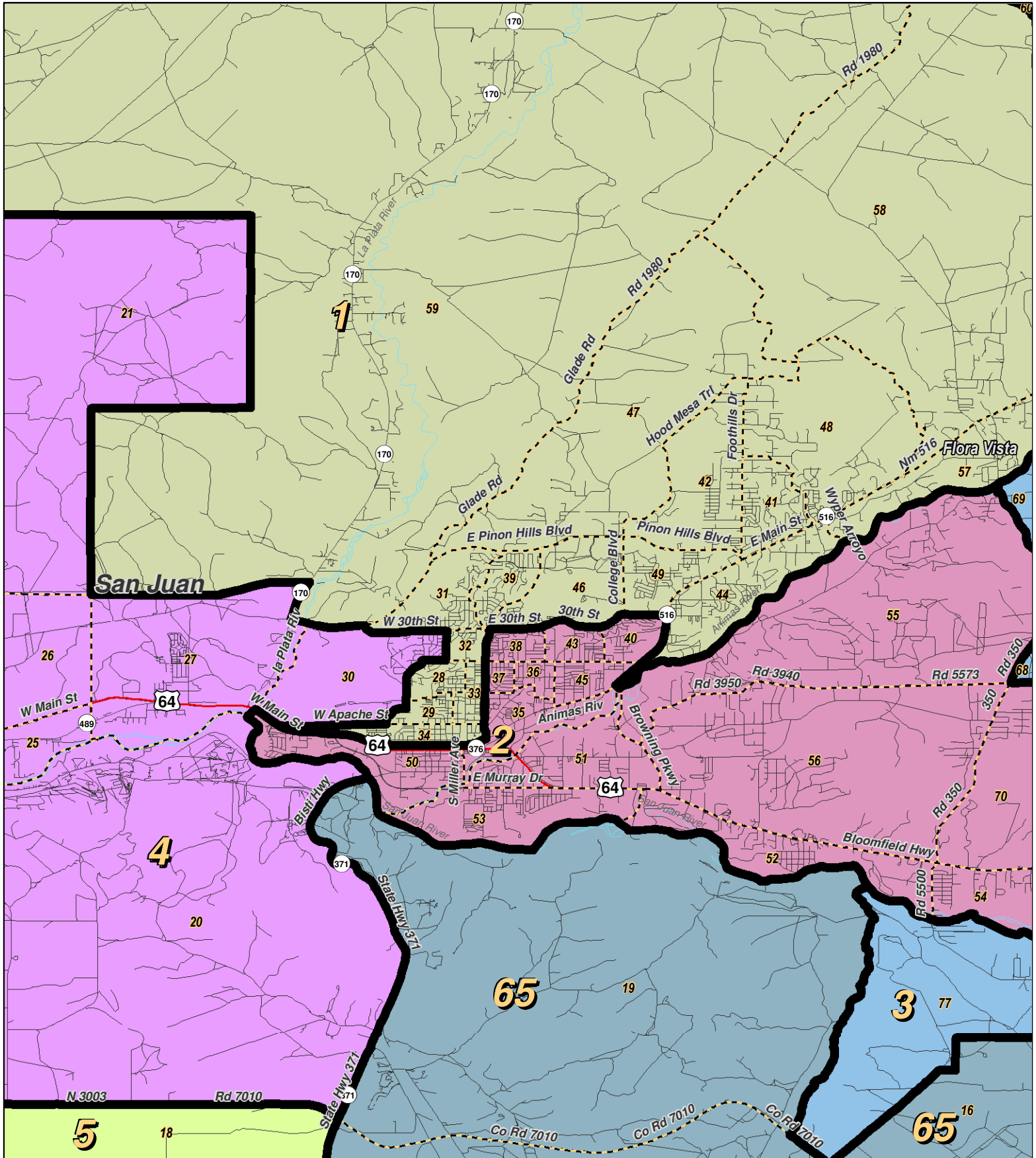
Created: March 02, 2012

- Precincts
- Counties
- Rivers
- Lakes / Ponds
- Interstate
- US Highway
- State Highway

Research & Polling, Inc. distributes this map assuming no liability for any errors, omissions, or inaccuracies in the information provided regardless of the cause in reliance upon any maps.



For the New Mexico
 Legislative Council Service



RESEARCH & POLLING INC.

For the New Mexico
Legislative Council Service

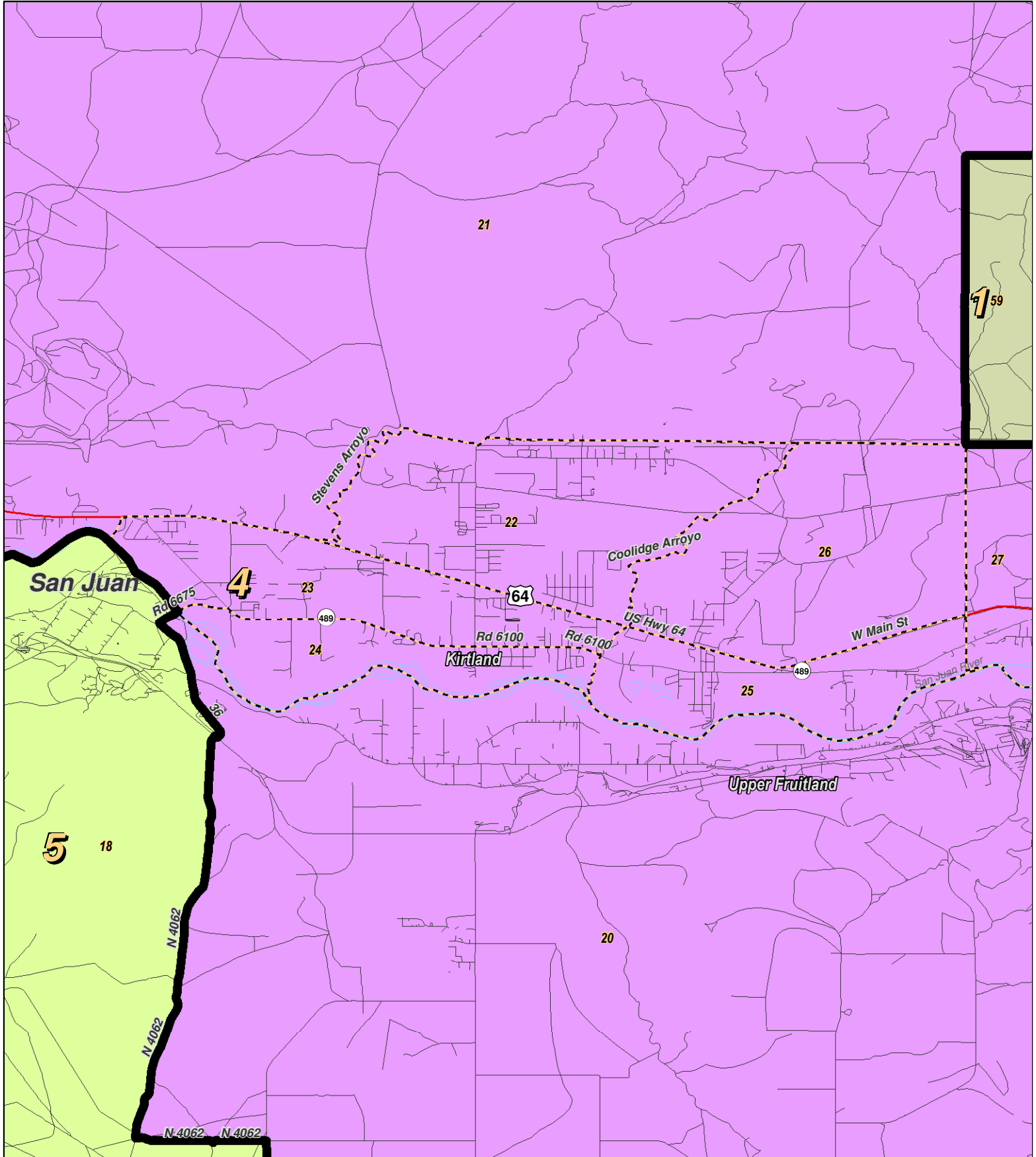
0 1 2 3 Miles



LEGEND Created: March 01, 2012

Precincts	Rivers	Interstate
Counties	Lakes / Ponds	US Highway
		State Highway

Research & Polling, Inc. distributes this map assuming no liability for any errors, omissions, or inaccuracies in the information provided regardless of the cause in reliance upon any maps.



0 1 2 Miles

RESEARCH & POLLING INC.

For the New Mexico
 Legislative Council Service

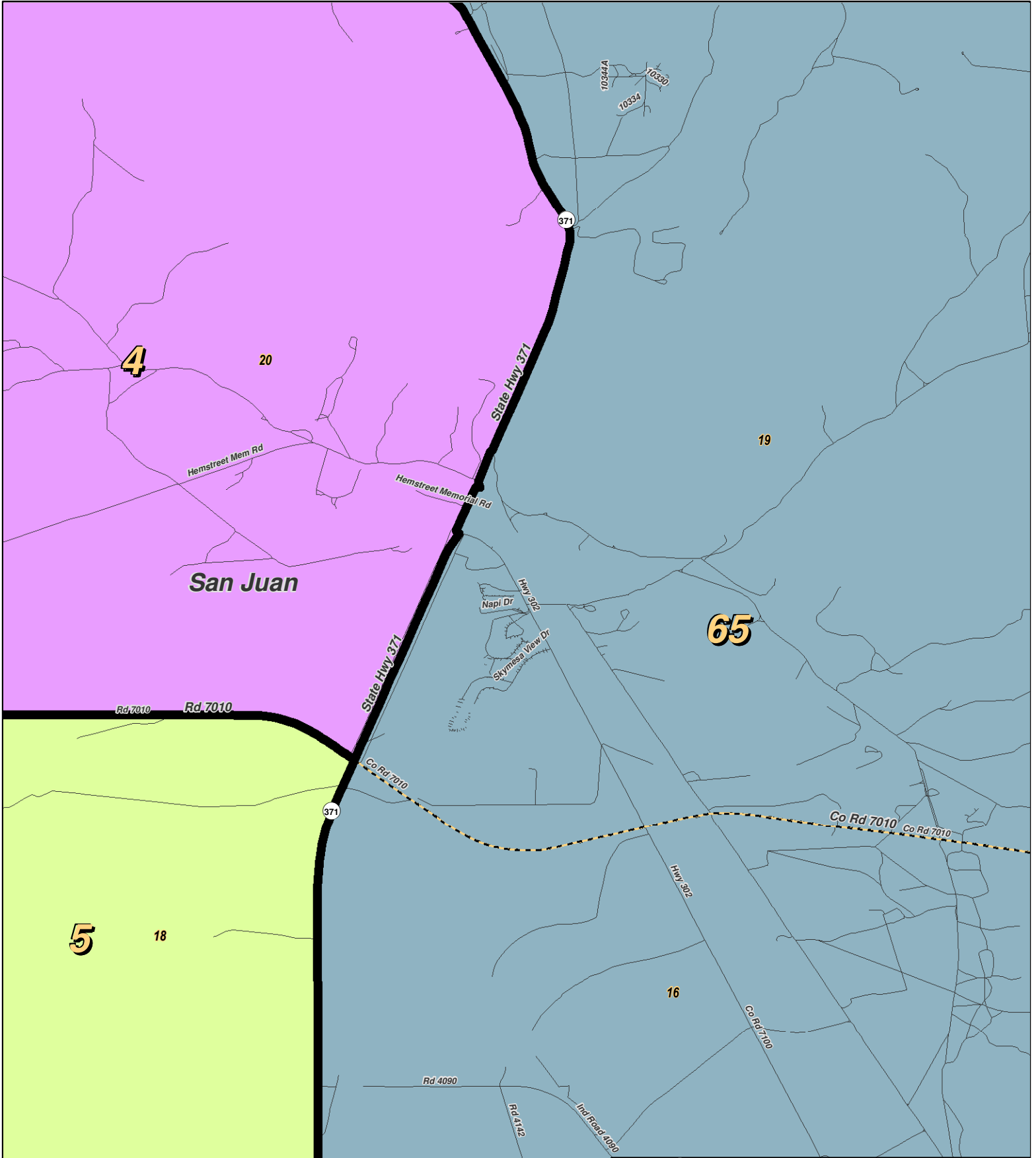
N



LEGEND Created: March 01, 2012

Precincts	Rivers	Interstate
Counties	Lakes / Ponds	US Highway
		State Highway

Research & Polling, Inc. distributes this map assuming no liability for any errors, omissions, or inaccuracies in the information provided regardless of the cause in reliance upon any maps.



0 1 Miles

RESEARCH & POLLING INC.

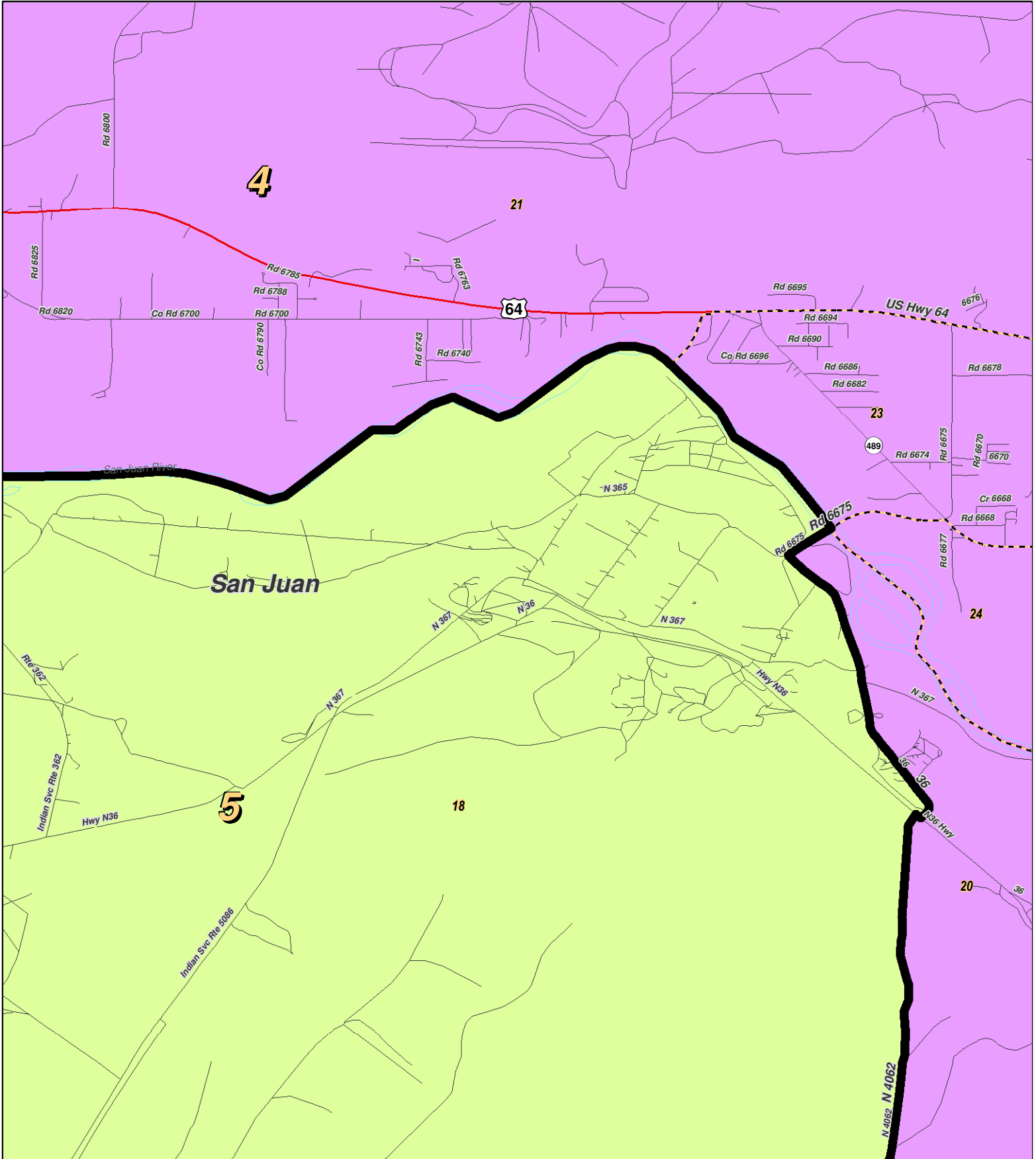
For the New Mexico Legislative Council Service



LEGEND Created: March 01, 2012

Precincts	Rivers	Interstate
Counties	Lakes / Ponds	US Highway
		State Highway

Research & Polling, Inc. distributes this map assuming no liability for any errors, omissions, or inaccuracies in the information provided regardless of the cause in reliance upon any maps.



LEGEND

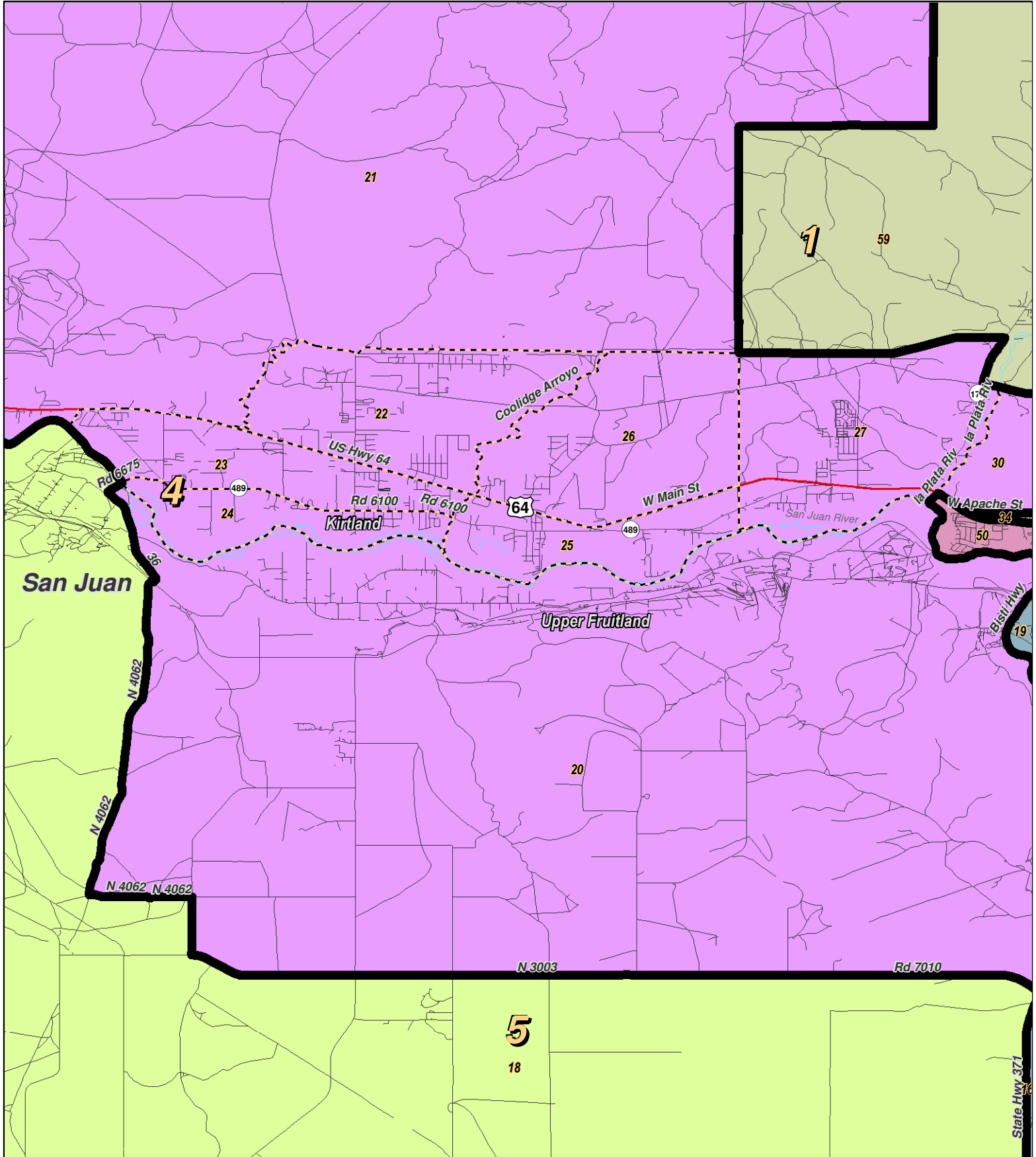
Created: March 01, 2012

- Precincts
- Counties
- Rivers
- Lakes / Ponds
- Interstate
- US Highway
- State Highway



For the New Mexico
 Legislative Council Service

Research & Polling, Inc. distributes this map assuming no liability for any errors, omissions, or inaccuracies in the information provided regardless of the cause in reliance upon any maps.



0 1 2 Miles

RESEARCH & POLLING INC.

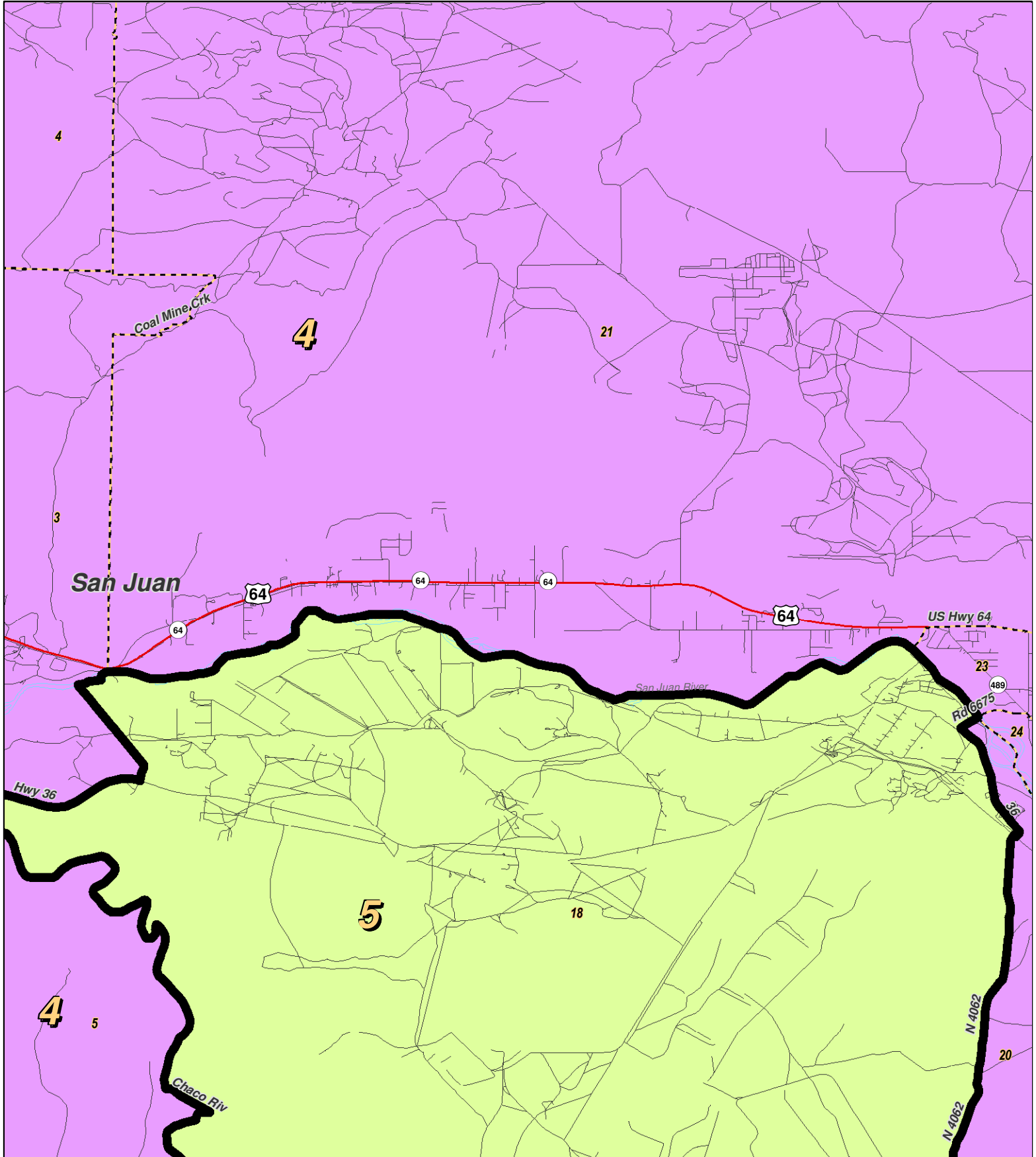
For the New Mexico Legislative Council Service



LEGEND Created: March 01, 2012

Precincts	Rivers	Interstate
Counties	Lakes / Ponds	US Highway
		State Highway

Research & Polling, Inc. distributes this map assuming no liability for any errors, omissions, or inaccuracies in the information provided regardless of the cause in reliance upon any maps.



0 1 2 Miles

RESEARCH & POLLING INC.

For the New Mexico Legislative Council Service



LEGEND Created: March 01, 2012

Precincts	Rivers	Interstate
Counties	Lakes / Ponds	US Highway
		State Highway

Research & Polling, Inc. distributes this map assuming no liability for any errors, omissions, or inaccuracies in the information provided regardless of the cause in reliance upon any maps.

**NM House
 HD_District_Court_1
 (Court Adopted on Remand February 2012)**

District: 4

				Adult Non-Hispanic		
County/ Precinct	Total Population	Adult Hispanic	Total Adult Native American	White	Native American	Black
SJ 1	1,682	0.8%	98.8%	0.6%	97.3%	0.2%
SJ 2	2,083	0.6%	95.9%	3.2%	94.3%	0.1%
SJ 3	1,407	0.5%	99.2%	0.7%	97.9%	0.0%
SJ 4	2,762	1.7%	96.9%	2.0%	94.3%	0.3%
SJ 5	3,304	0.7%	98.9%	0.7%	97.9%	0.0%
SJ 6	552	0.0%	99.0%	1.0%	99.0%	0.0%
SJ 7	611	0.2%	97.9%	1.7%	97.7%	0.2%
SJ 20	2,664	2.6%	98.4%	1.2%	95.2%	0.1%
SJ 21	1,726	8.1%	45.1%	46.7%	43.0%	0.7%
SJ 22	2,677	10.9%	67.3%	22.5%	64.0%	0.2%
SJ 23	1,846	8.6%	46.5%	44.5%	43.8%	0.2%
SJ 24	994	9.4%	27.1%	62.9%	25.4%	0.4%
SJ 25	1,169	10.0%	28.6%	61.3%	26.5%	1.1%
SJ 26	1,204	7.6%	71.7%	22.0%	67.5%	0.1%
SJ 27	3,068	25.0%	52.8%	21.8%	49.9%	1.1%
SJ 30	2,165	16.4%	18.1%	65.4%	15.5%	0.5%
District Totals	29,914	7.2%	72.5%	20.7%	70.2%	0.3%