

0 4 8 12 16 Miles

RESEARCH & POLLING INC.

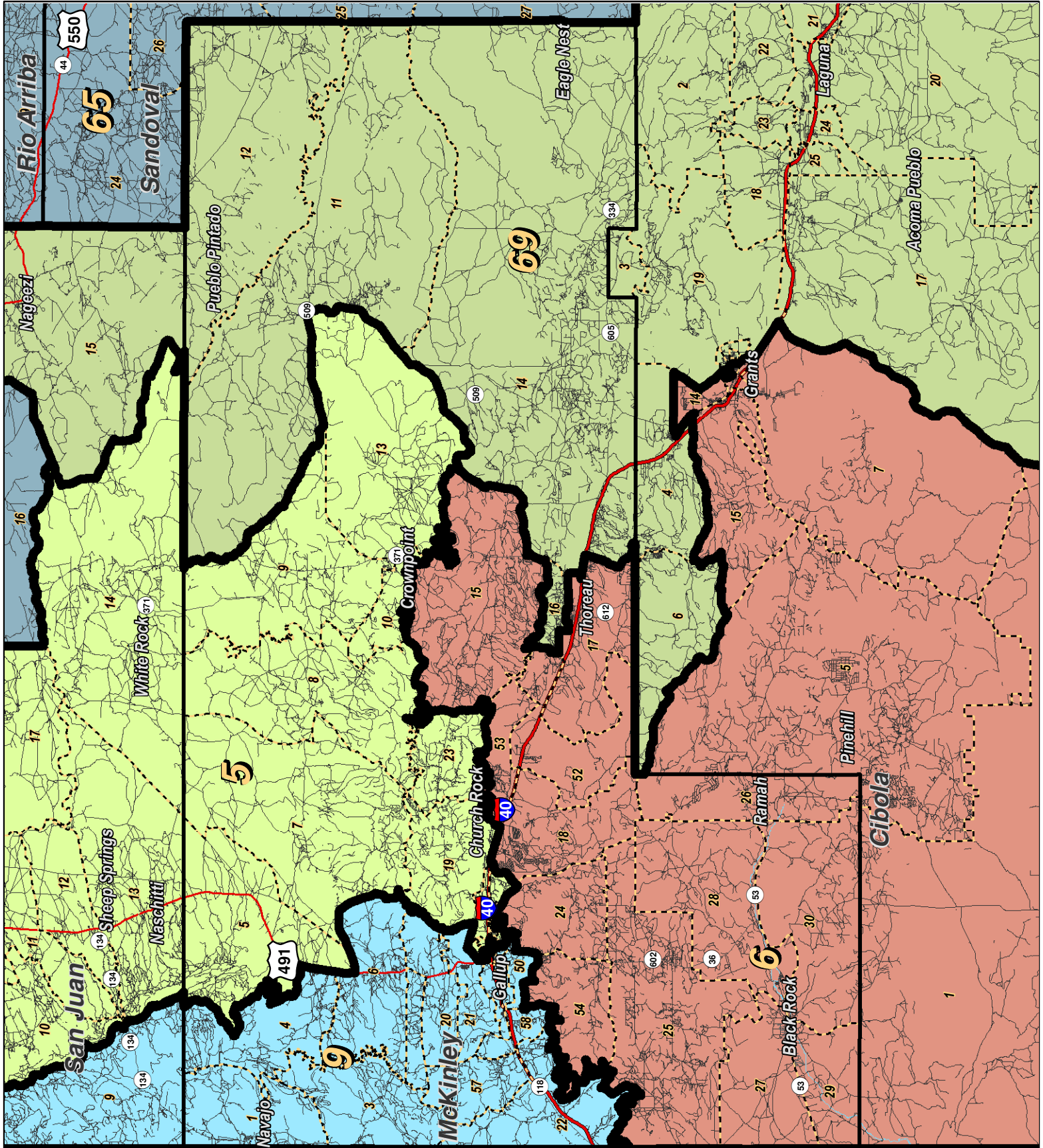
For the New Mexico Legislative Council Service



LEGEND Created: March 02, 2012

Precincts	Rivers	Interstate
Counties	Lakes / Ponds	US Highway
		State Highway

Research & Polling, Inc. distributes this map assuming no liability for any errors, omissions, or inaccuracies in the information provided regardless of the cause in reliance upon any maps.



For the New Mexico
Legislative Council Service

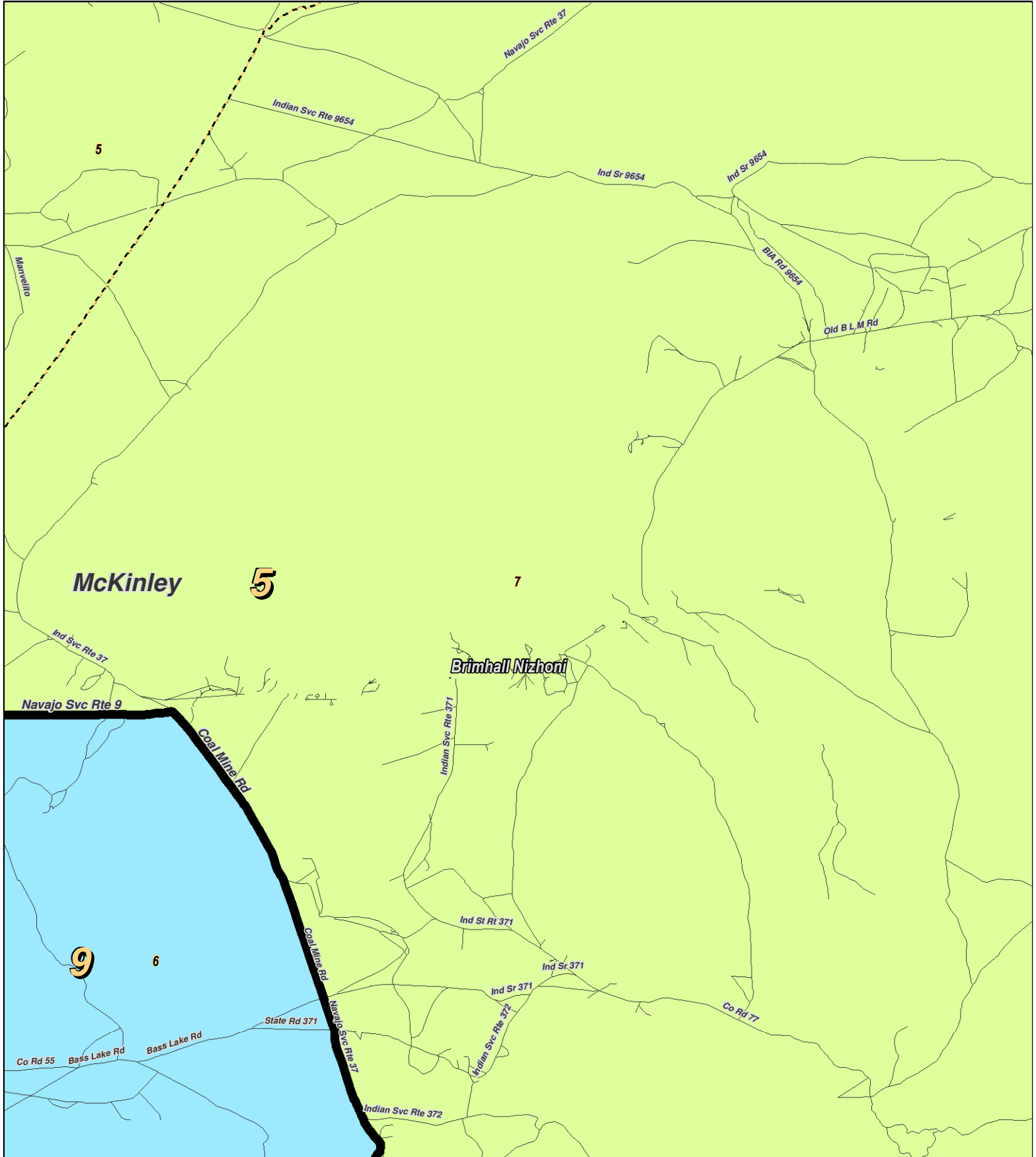
Miles

NEW MEXICO

LEGEND Created: March 01, 2012

Precincts	Rivers	Interstate
Counties	Lakes / Ponds	US Highway
		State Highway

Research & Polling, Inc. distributes this map assuming no liability for any errors, omissions, or inaccuracies in the information provided regardless of the cause in reliance upon any maps.



0 1 Miles

RESEARCH & POLLING
 INC.

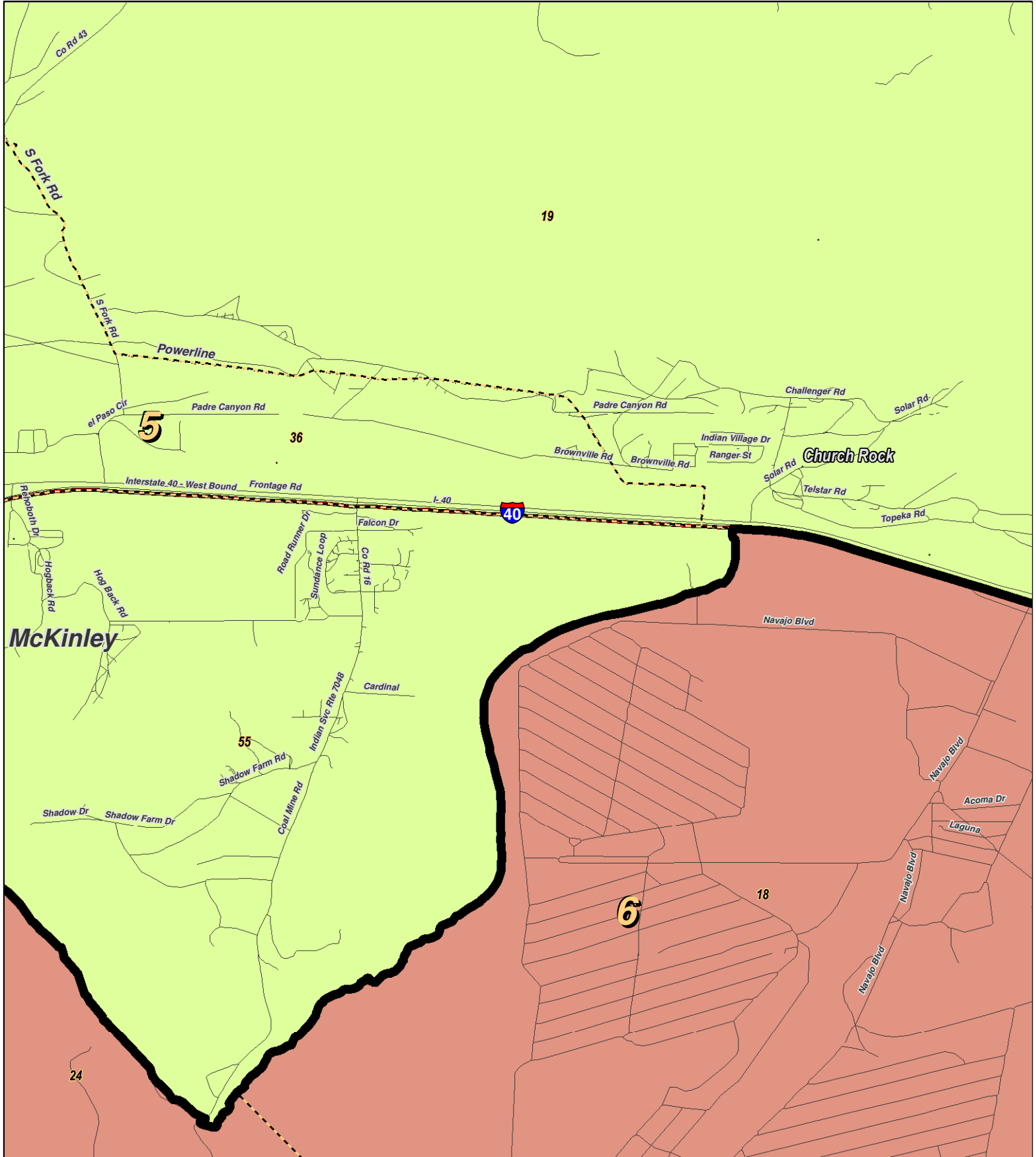
For the New Mexico
 Legislative Council Service

NEW MEXICO

LEGEND Created: March 01, 2012

Precincts	Rivers	Interstate
Counties	Lakes / Ponds	US Highway
		State Highway

Research & Polling, Inc. distributes this map assuming no liability for any errors, omissions, or inaccuracies in the information provided regardless of the cause in reliance upon any maps.



0 1 Miles

RESEARCH & POLLING INC.

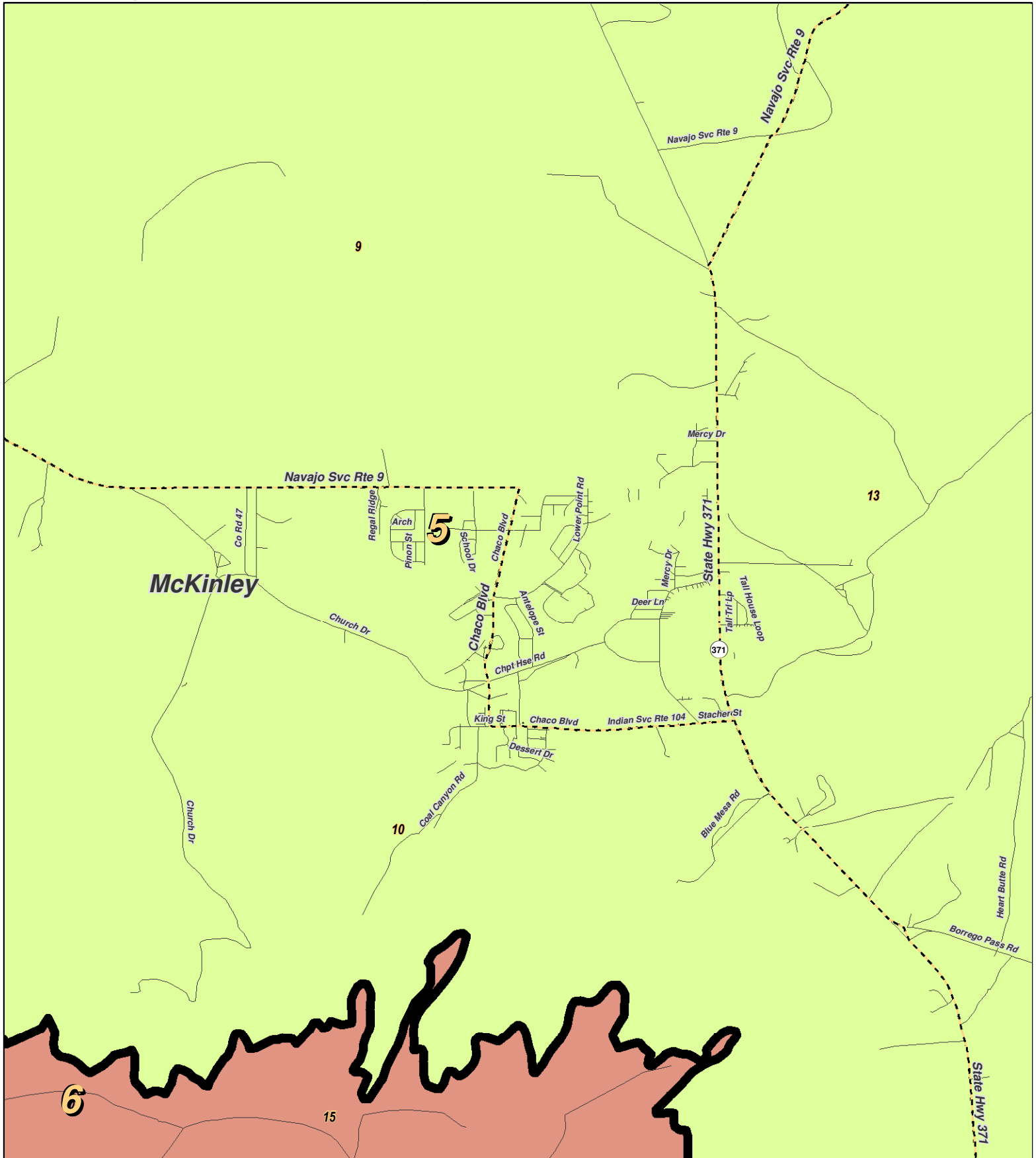
For the New Mexico Legislative Council Service



LEGEND Created: March 01, 2012

Precincts	Rivers	Interstate
Counties	Lakes / Ponds	US Highway
		State Highway

Research & Polling, Inc. distributes this map assuming no liability for any errors, omissions, or inaccuracies in the information provided regardless of the cause in reliance upon any maps.



RESEARCH & POLLING INC.

For the New Mexico Legislative Council Service

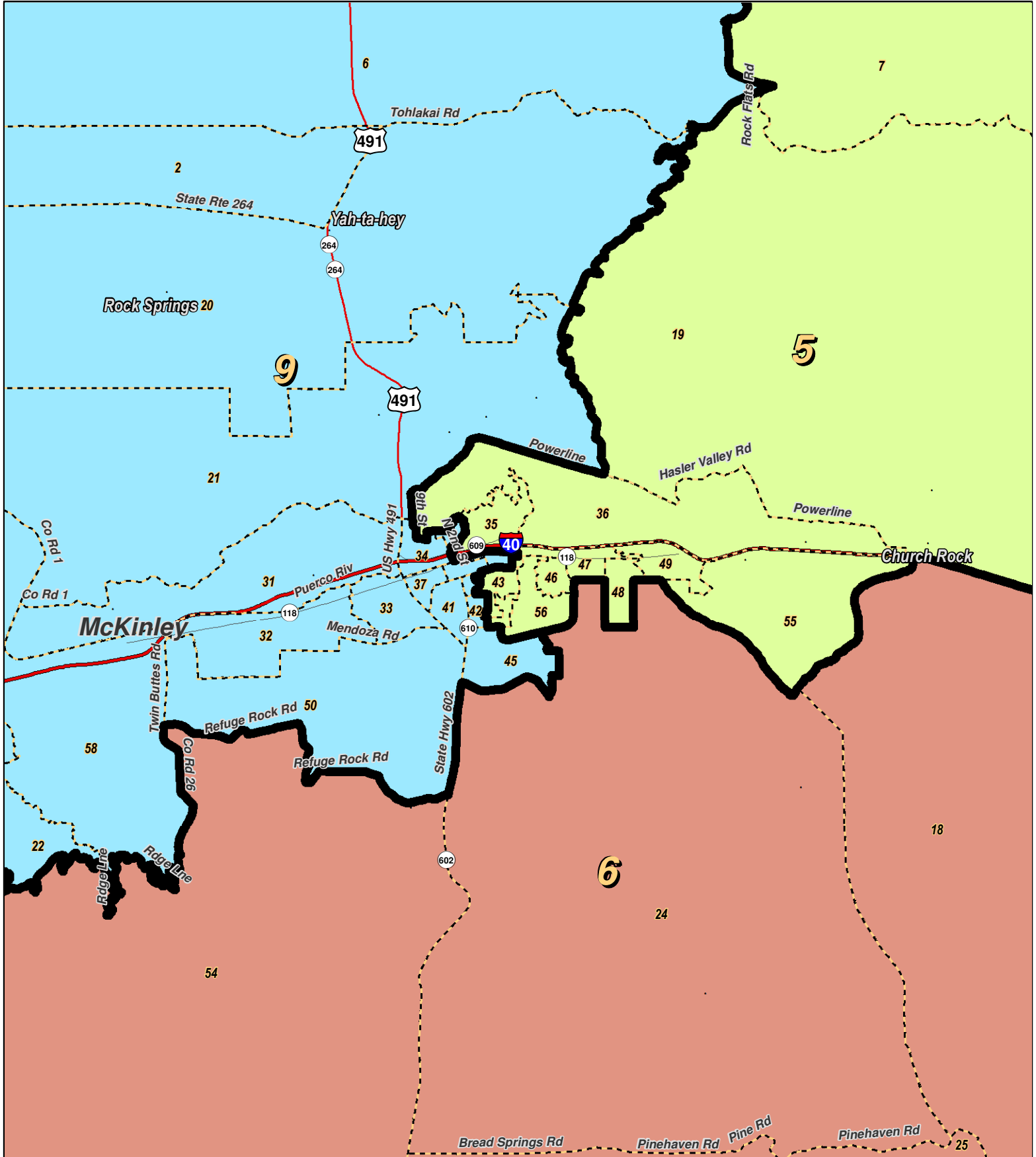
0 1 Miles



LEGEND Created: March 01, 2012

Precincts	Rivers	Interstate
Counties	Lakes / Ponds	US Highway
		State Highway

Research & Polling, Inc. distributes this map assuming no liability for any errors, omissions, or inaccuracies in the information provided regardless of the cause in reliance upon any maps.



0 1 2 3 4 Miles

RESEARCH & POLLING INC.

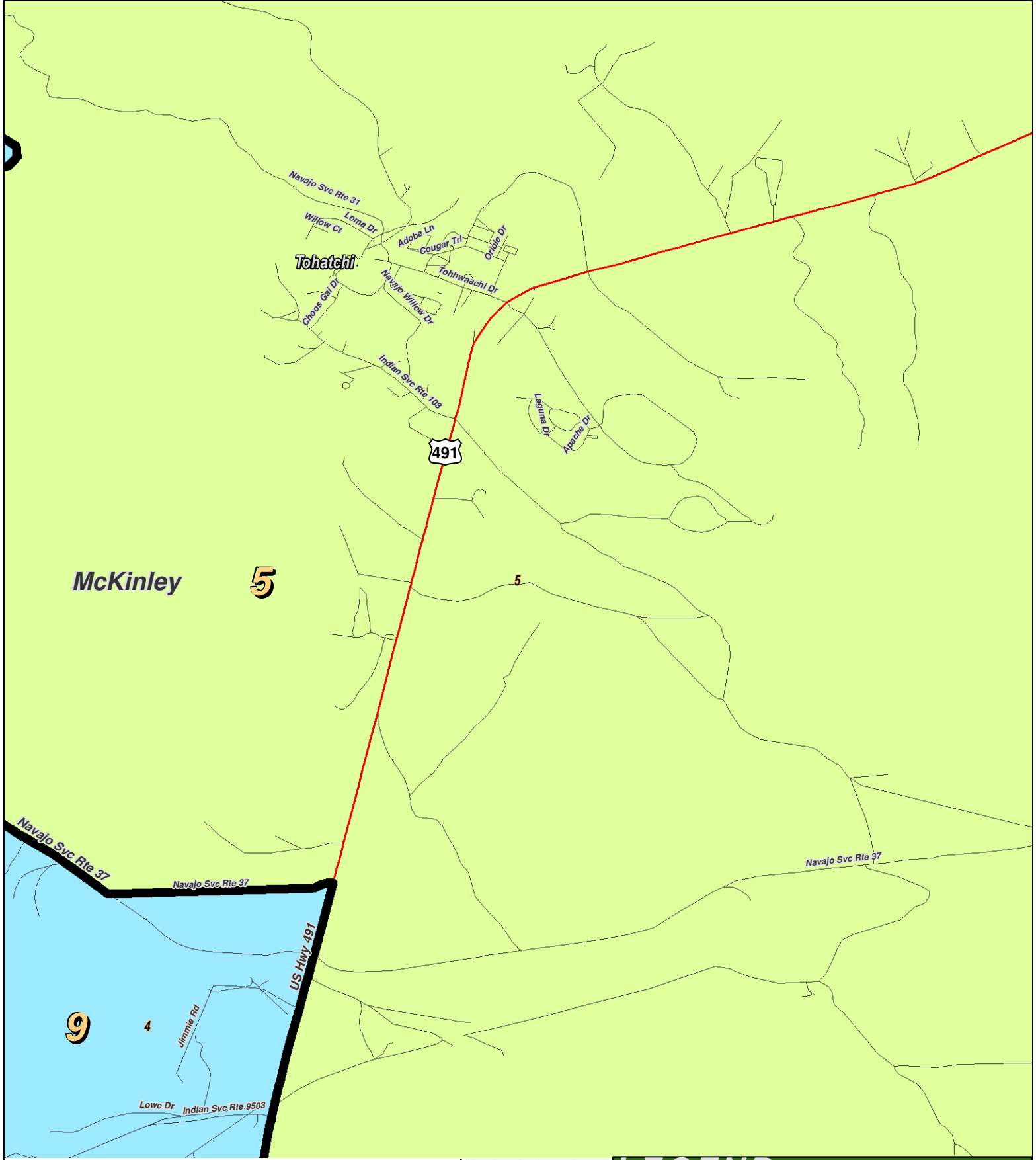
For the New Mexico Legislative Council Service



LEGEND Created: March 01, 2012

Precincts	Rivers	Interstate
Counties	Lakes / Ponds	US Highway
		State Highway

Research & Polling, Inc. distributes this map assuming no liability for any errors, omissions, or inaccuracies in the information provided regardless of the cause in reliance upon any maps.



0 0.9 Miles

RESEARCH & POLLING INC.

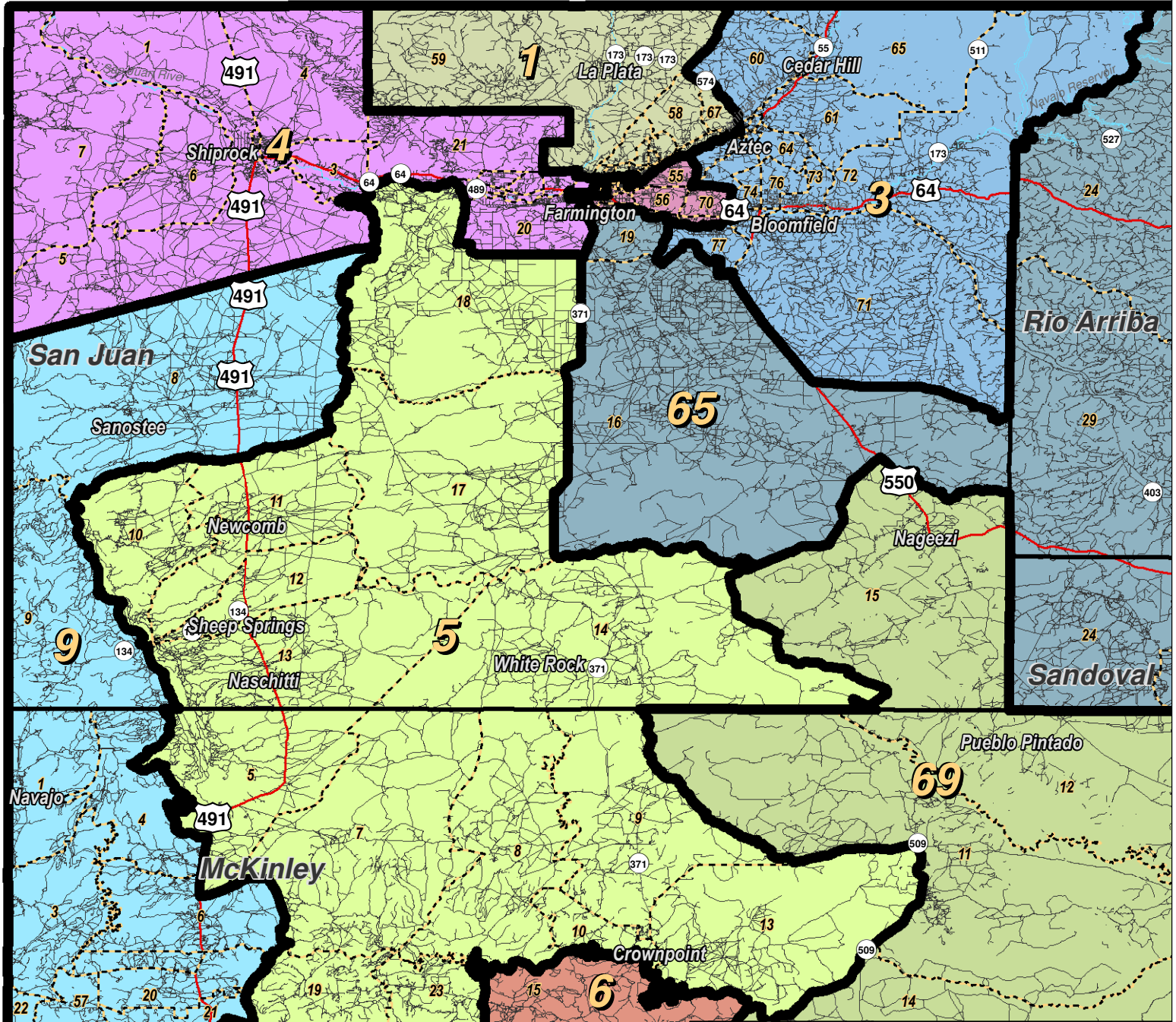
For the New Mexico Legislative Council Service

LEGEND Created: March 01, 2012

- Precincts
- Counties
- Rivers
- Lakes / Ponds
- Interstate
- US Highway
- State Highway

NEW MEXICO

Research & Polling, Inc. distributes this map assuming no liability for any errors, omissions, or inaccuracies in the information provided regardless of the cause in reliance upon any maps.



LEGEND

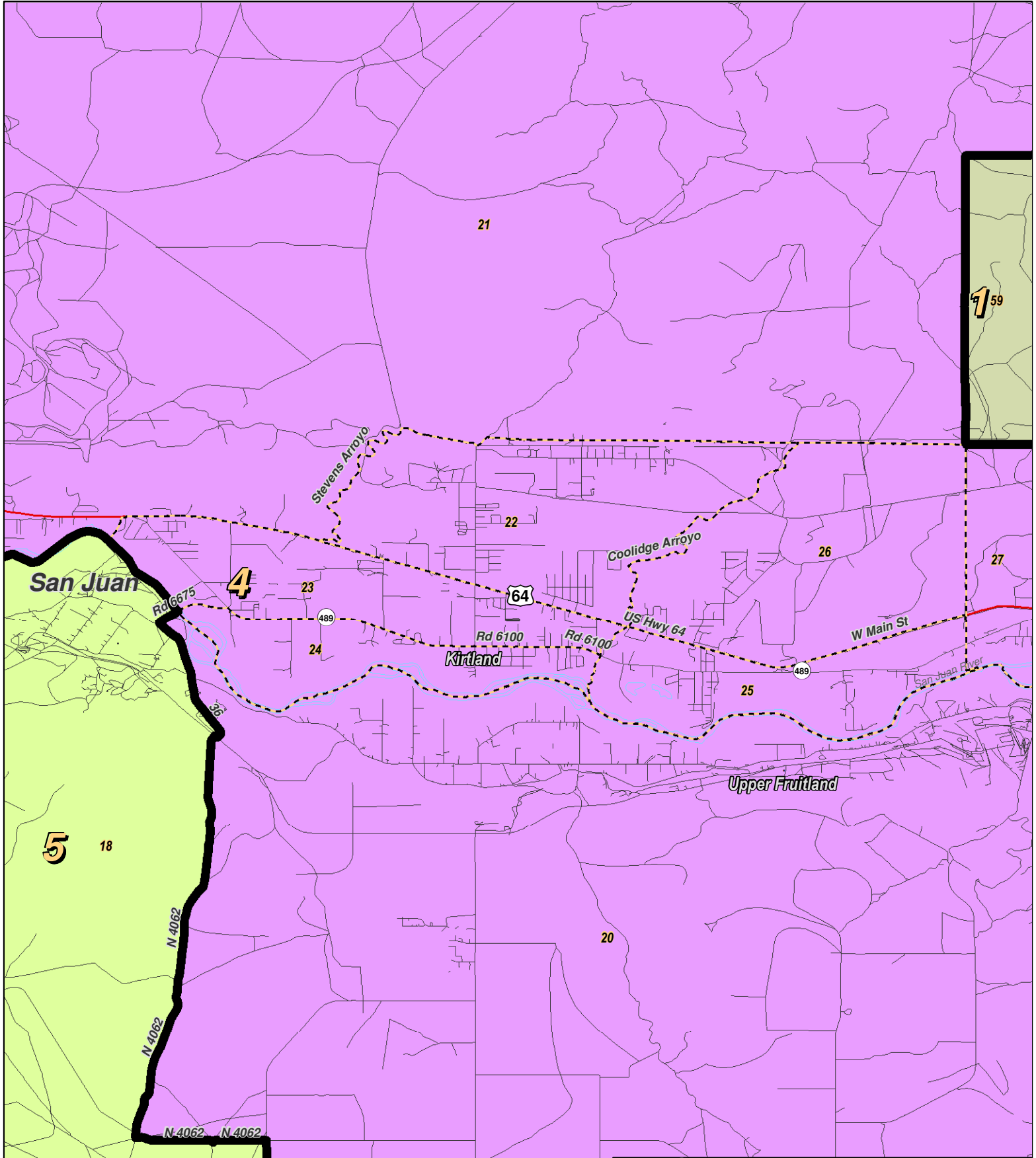
Created: March 01, 2012

- Precincts
- Rivers
- Counties
- Lakes / Ponds
- Interstate
- US Highway
- State Highway



For the New Mexico
 Legislative Council Service

Research & Polling, Inc. distributes this map assuming no liability for any errors, omissions, or inaccuracies in the information provided regardless of the cause in reliance upon any maps.

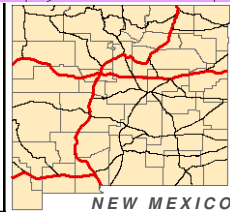


0 1 2 Miles

RESEARCH & POLLING INC.

For the New Mexico
 Legislative Council Service

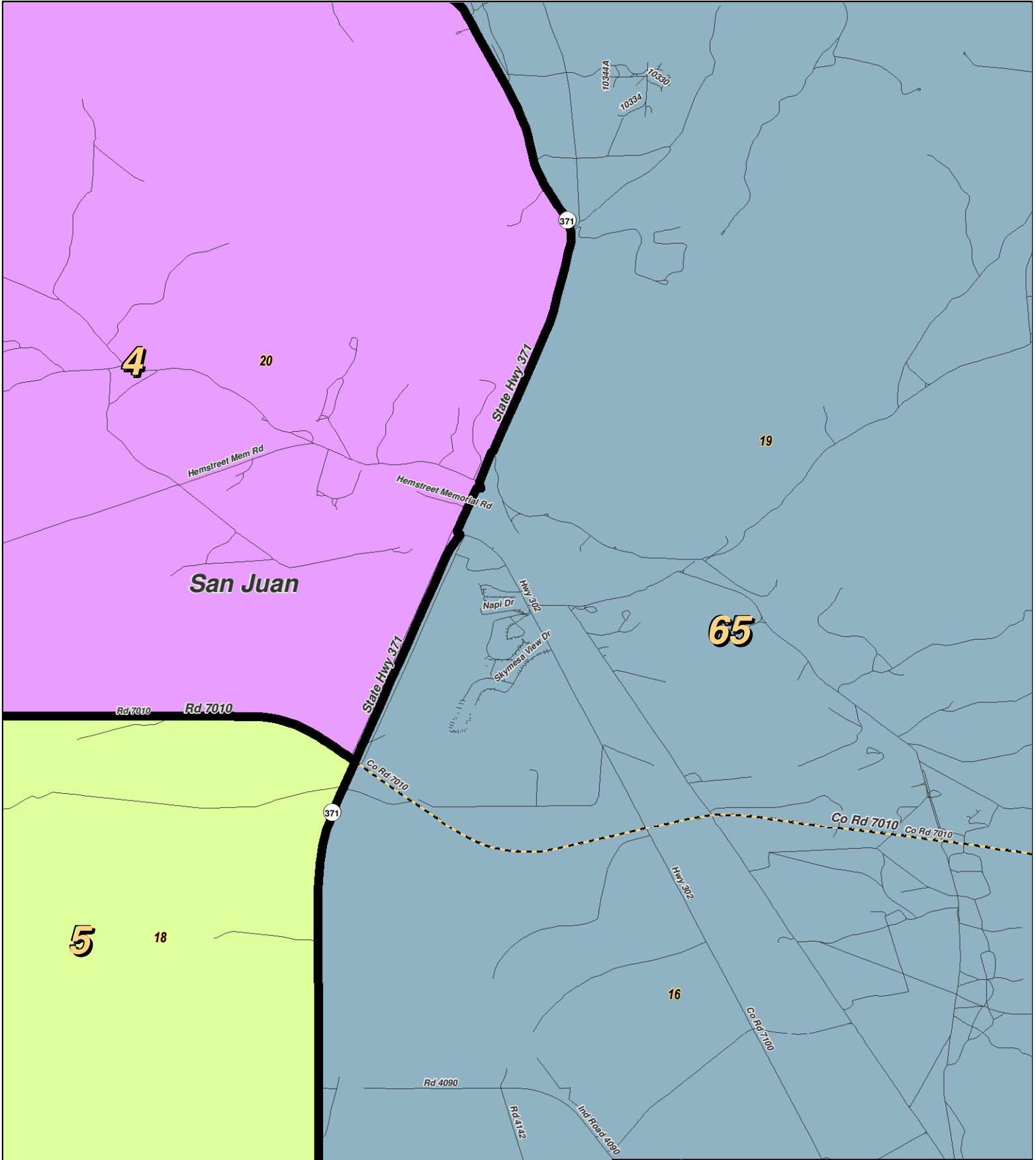
N



LEGEND Created: March 01, 2012

Precincts	Rivers	Interstate
Counties	Lakes / Ponds	US Highway
		State Highway

Research & Polling, Inc. distributes this map assuming no liability for any errors, omissions, or inaccuracies in the information provided regardless of the cause in reliance upon any maps.



0 1 Miles

RESEARCH & POLLING INC.

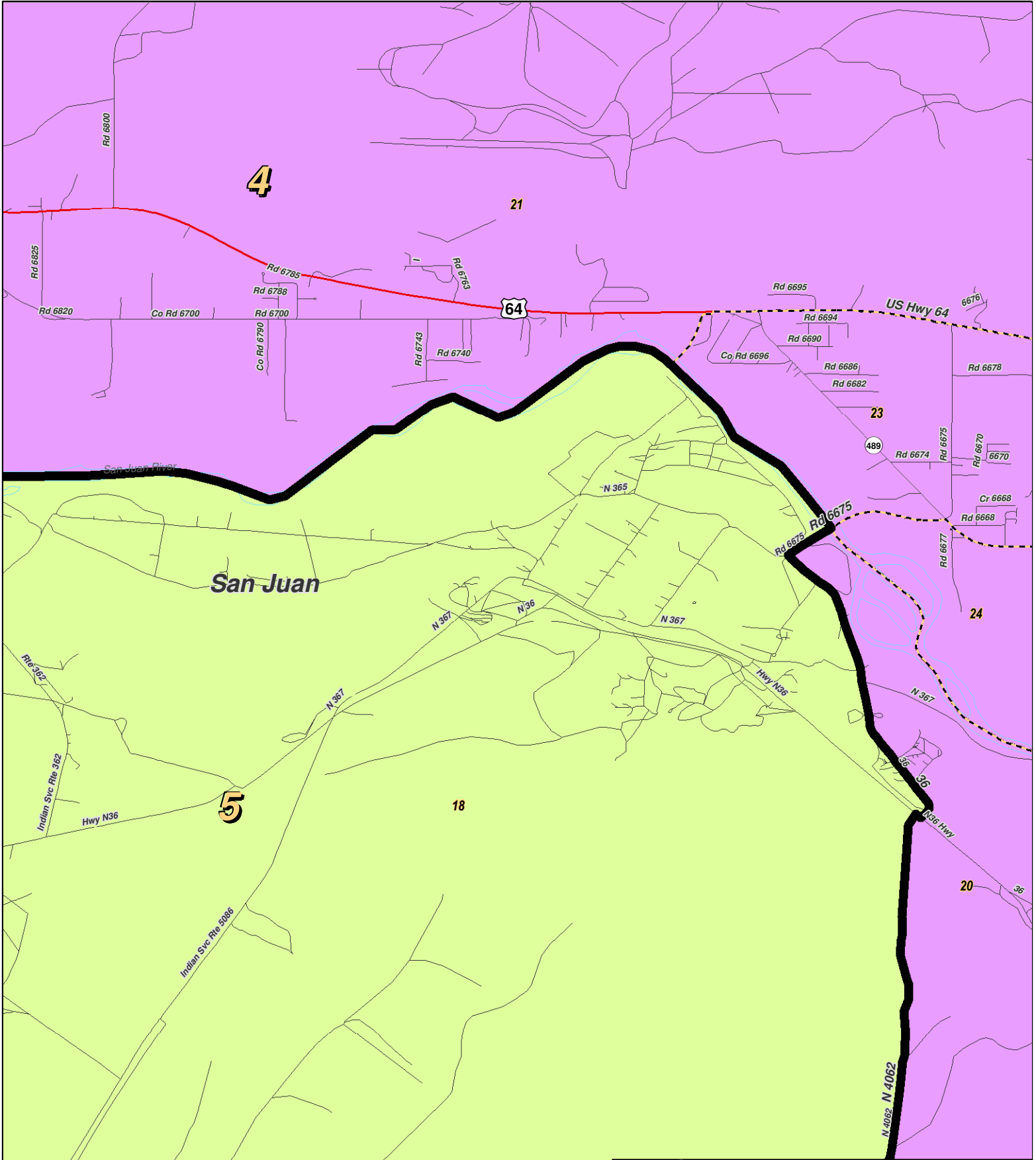
For the New Mexico Legislative Council Service



LEGEND Created: March 01, 2012

Precincts	Rivers	Interstate
Counties	Lakes / Ponds	US Highway
		State Highway

Research & Polling, Inc. distributes this map assuming no liability for any errors, omissions, or inaccuracies in the information provided regardless of the cause in reliance upon any maps.



LEGEND

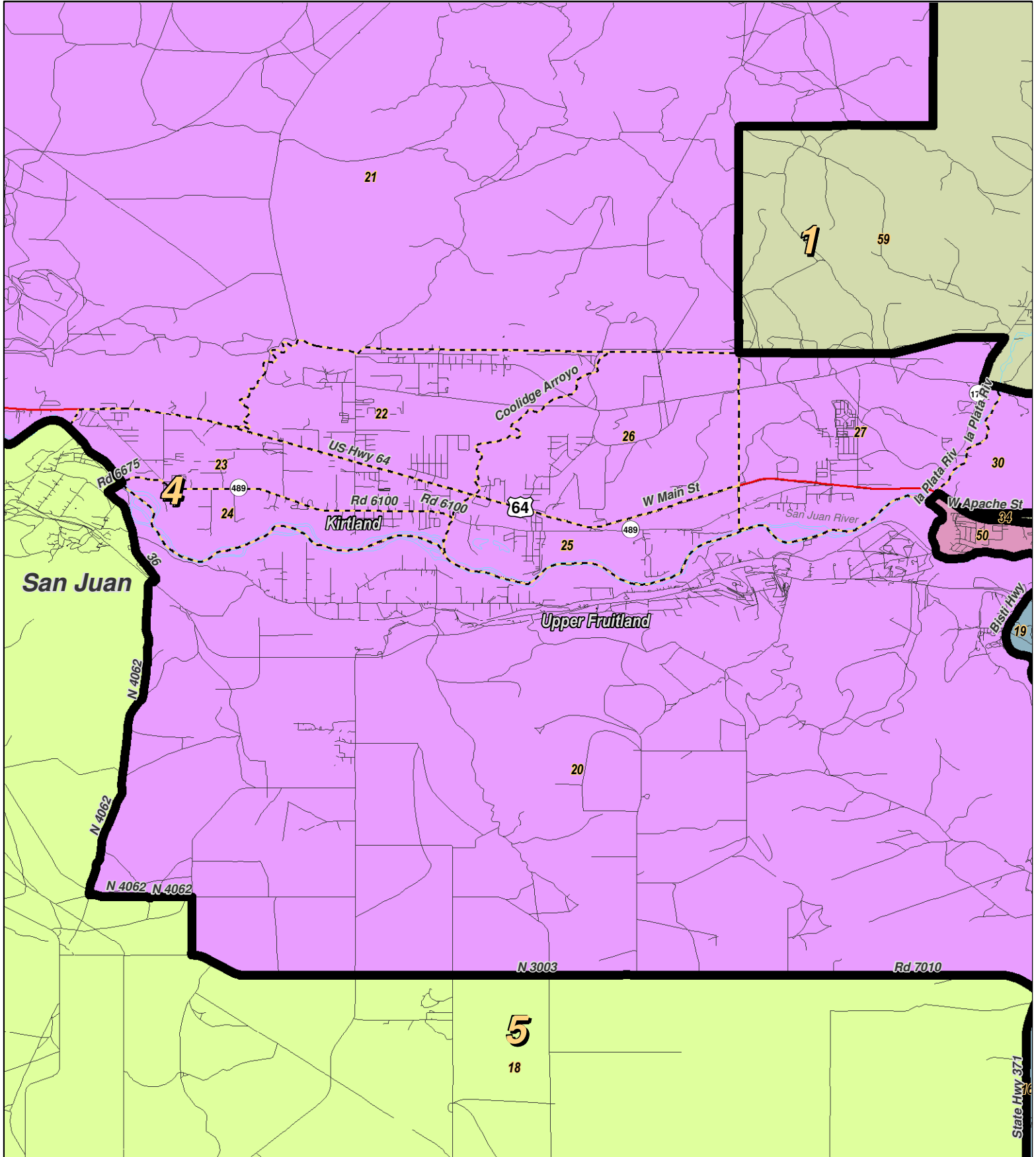
Created: March 01, 2012

- Precincts
- Rivers
- Interstate
- Counties
- Lakes / Ponds
- US Highway
- State Highway



For the New Mexico
Legislative Council Service

Research & Polling, Inc. distributes this map assuming no liability for any errors, omissions, or inaccuracies in the information provided regardless of the cause in reliance upon any maps.



0 1 2 Miles

RESEARCH & POLLING INC.

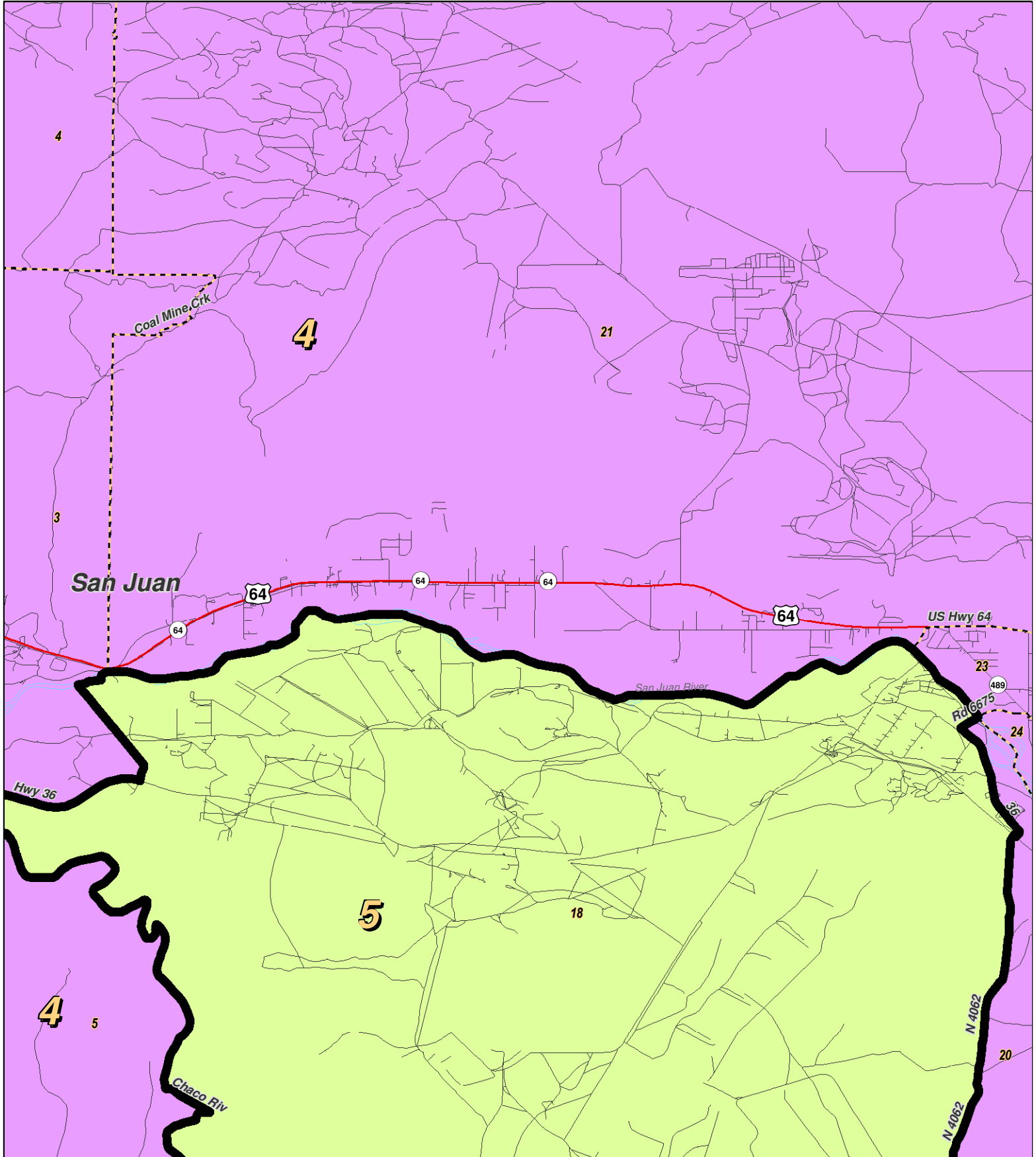
For the New Mexico
Legislative Council Service



LEGEND Created: March 01, 2012

Precincts	Rivers	Interstate
Counties	Lakes / Ponds	US Highway
		State Highway

Research & Polling, Inc. distributes this map assuming no liability for any errors, omissions, or inaccuracies in the information provided regardless of the cause in reliance upon any maps.



0 1 2 Miles

RESEARCH & POLLING INC.

For the New Mexico Legislative Council Service



LEGEND Created: March 01, 2012

Precincts	Rivers	Interstate
Counties	Lakes / Ponds	US Highway
		State Highway

Research & Polling, Inc. distributes this map assuming no liability for any errors, omissions, or inaccuracies in the information provided regardless of the cause in reliance upon any maps.

**NM House
 HD_District_Court_1
 (Court Adopted on Remand February 2012)**

District: 5

District: 5				Adult Non-Hispanic		
County/ Precinct	Total Population	Adult Hispanic	Total Adult Native American	White	Native American	Black
MC 5	1,434	1.5%	92.0%	3.5%	91.1%	0.0%
MC 7	1,154	1.1%	99.3%	0.1%	97.7%	0.5%
MC 8	737	1.1%	98.1%	1.1%	96.7%	0.2%
MC 9	1,931	1.1%	95.8%	3.4%	94.6%	0.1%
MC 10	1,276	0.8%	90.9%	6.7%	90.2%	0.9%
MC 13	866	0.2%	98.6%	0.9%	97.8%	0.3%
MC 19	1,789	2.4%	99.0%	0.1%	97.0%	0.3%
MC 23	1,330	0.2%	99.4%	0.5%	98.5%	0.1%
MC 35	1,278	34.2%	54.5%	12.1%	49.9%	1.5%
MC 36	485	17.9%	72.4%	14.1%	66.3%	0.6%
MC 43	1,503	27.5%	26.6%	43.5%	22.0%	0.7%
MC 44	463	20.1%	6.2%	66.5%	4.6%	0.8%
MC 46	929	31.6%	18.4%	48.5%	14.4%	0.3%
MC 47	998	20.4%	74.9%	6.0%	70.7%	1.0%
MC 48	2,647	28.4%	62.8%	11.5%	56.9%	0.6%
MC 49	1,466	25.9%	30.7%	42.4%	27.0%	0.5%
MC 55	764	2.9%	93.1%	5.9%	91.2%	0.0%
MC 56	1,033	16.9%	27.5%	48.0%	24.7%	2.2%
SJ 10	990	1.8%	97.5%	1.6%	96.0%	0.0%
SJ 11	864	2.2%	94.9%	3.3%	93.3%	0.3%
SJ 12	755	0.8%	99.0%	0.6%	98.1%	0.0%
SJ 13	1,409	1.5%	99.1%	0.3%	97.4%	0.1%
SJ 14	494	1.6%	94.2%	2.7%	93.7%	0.0%
SJ 17	298	0.4%	99.6%	0.0%	99.6%	0.0%
SJ 18	1,777	2.3%	98.2%	1.1%	96.0%	0.1%
District Totals	28,670	10.8%	76.4%	12.7%	73.8%	0.5%