

For the New Mexico
 Legislative Council Service



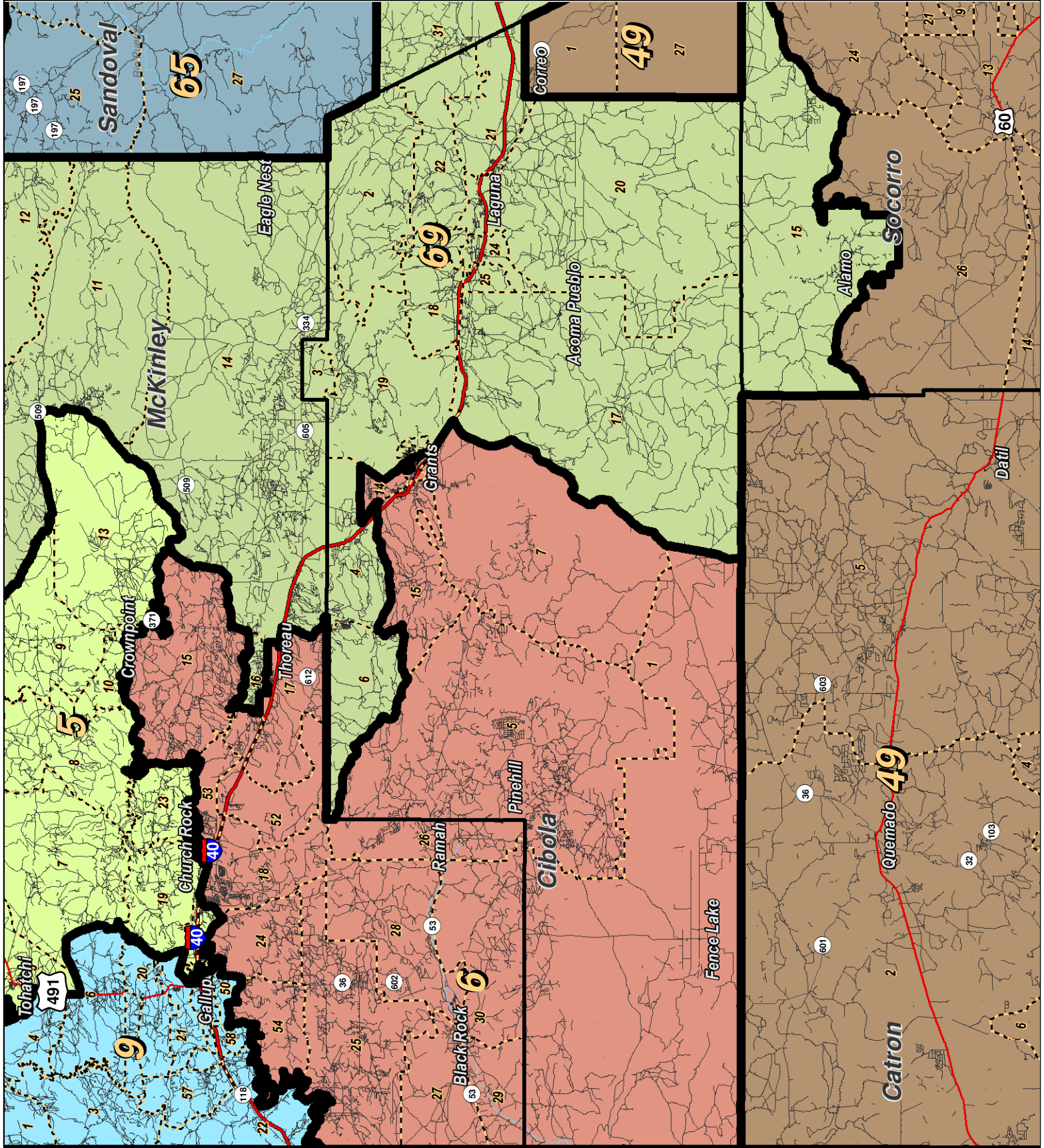
LEGEND

Created: March 02, 2012

- Precincts
- Counties
- Rivers
- Lakes / Ponds
- Interstate
- US Highway
- State Highway

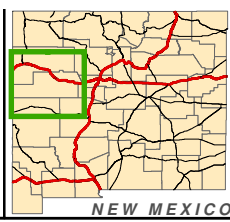
Research & Polling, Inc. distributes this map assuming no liability for any errors, omissions, or inaccuracies in the information provided regardless of the cause in reliance upon any maps.





For the New Mexico
 Legislative Council Service

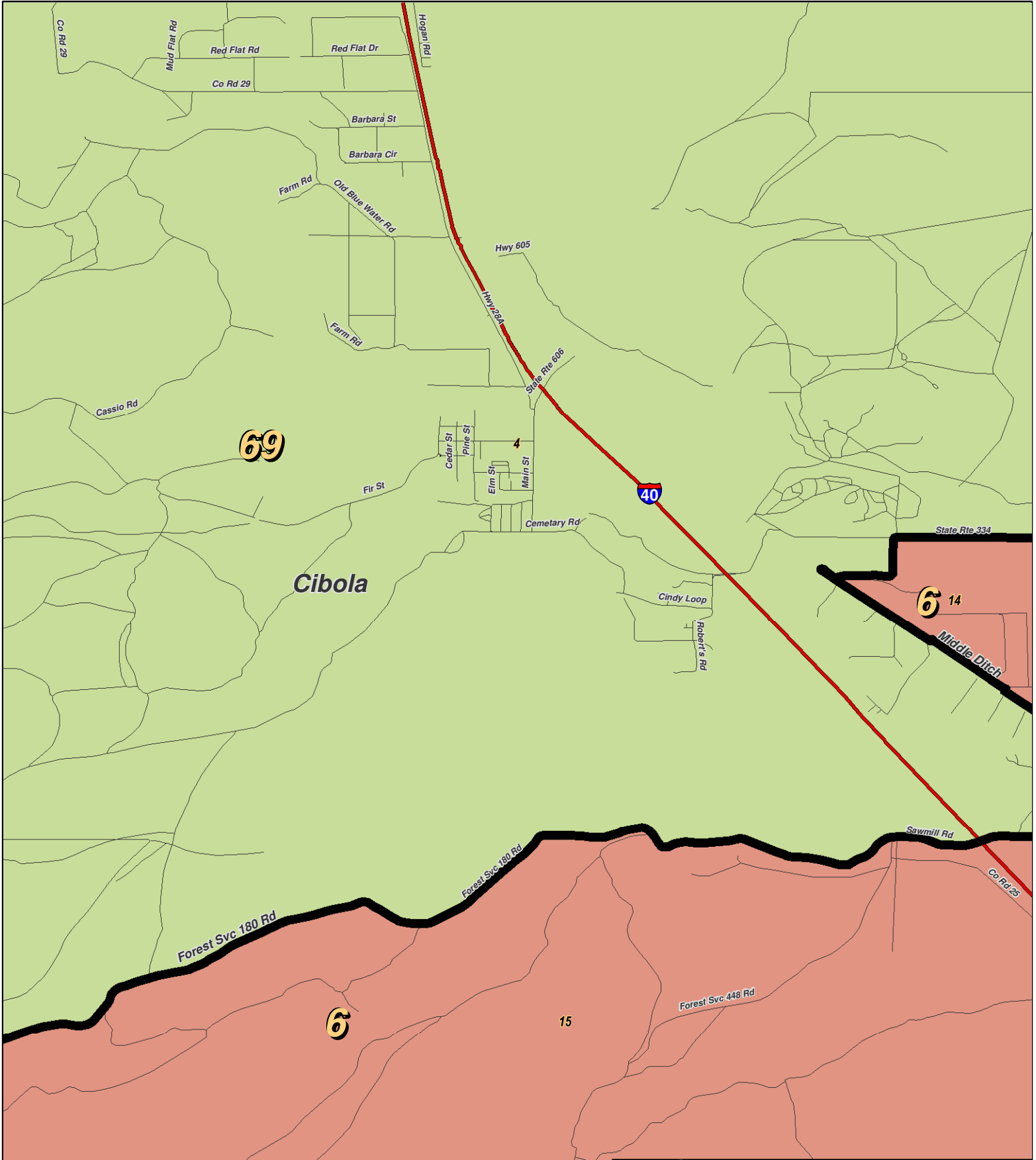
0 6 12 18 24 Miles



LEGEND Created: March 01, 2012

Precincts	Rivers	Interstate
Counties	Lakes / Ponds	US Highway
		State Highway

Research & Polling, Inc. distributes this map assuming no liability for any errors, omissions, or inaccuracies in the information provided regardless of the cause in reliance upon any maps.



For the New Mexico
Legislative Council Service

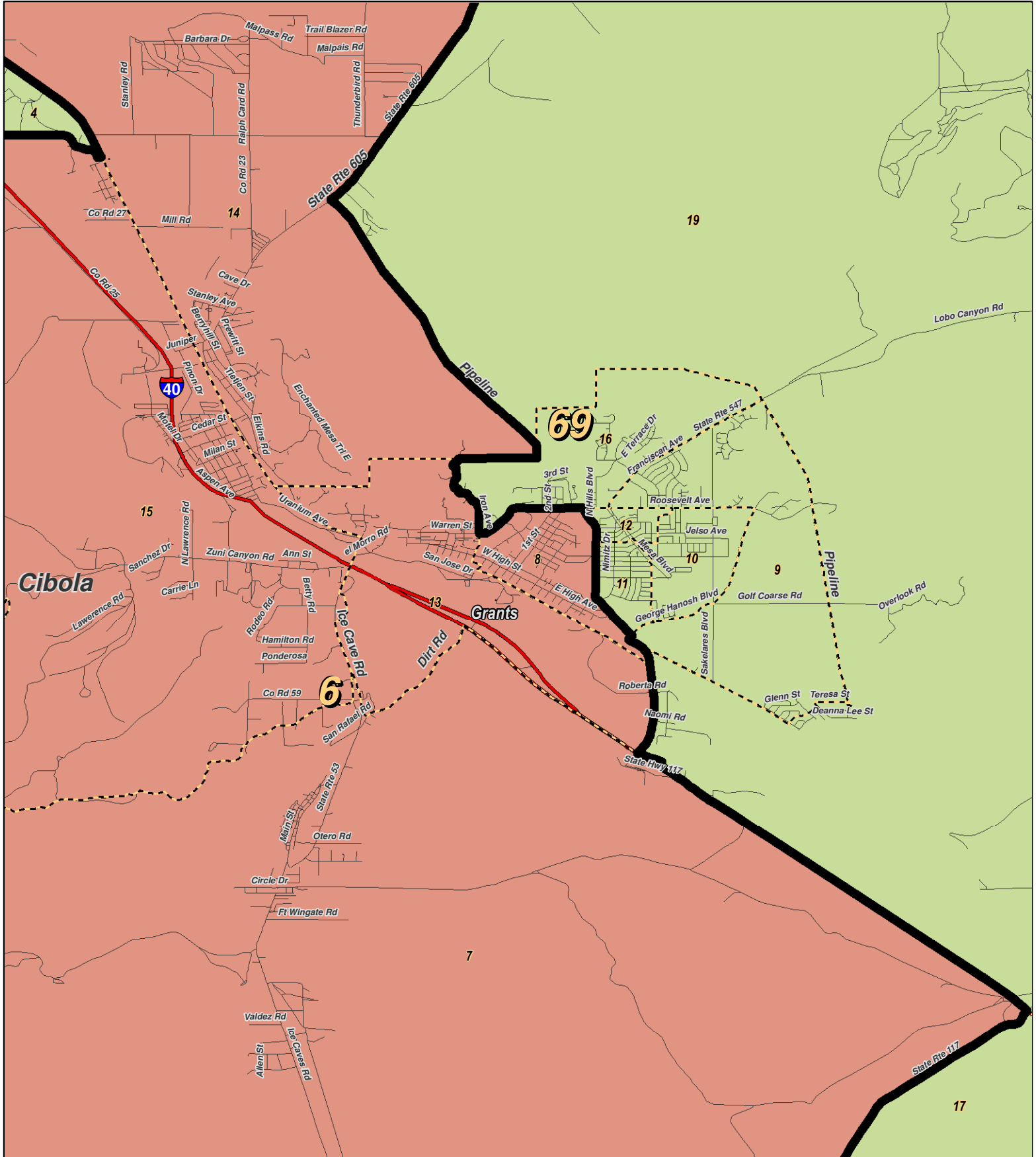
0 1 Miles

NEW MEXICO

LEGEND Created: March 01, 2012

Precincts	Rivers	Interstate
Counties	Lakes / Ponds	US Highway
		State Highway

Research & Polling, Inc. distributes this map assuming no liability for any errors, omissions, or inaccuracies in the information provided regardless of the cause in reliance upon any maps.



RESEARCH & POLLING INC.

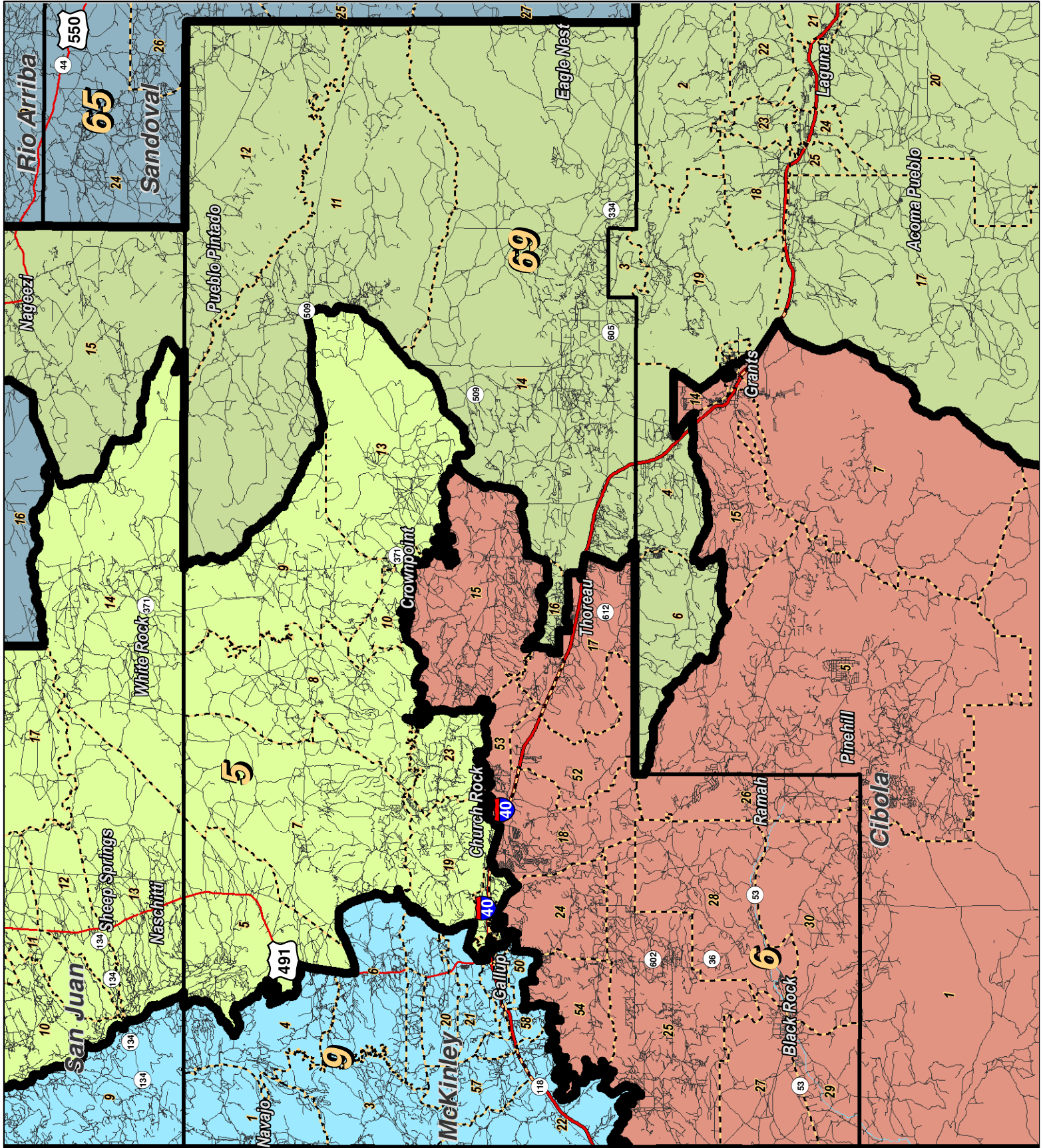
For the New Mexico
Legislative Council Service



LEGEND Created: March 01, 2012

- Precincts (dashed line)
- Counties (solid line)
- Rivers (blue wavy line)
- Lakes / Ponds (blue circle)
- Interstate (thick red line)
- US Highway (red line)
- State Highway (thin red line)

Research & Polling, Inc. distributes this map assuming no liability for any errors, omissions, or inaccuracies in the information provided regardless of the cause in reliance upon any maps.



For the New Mexico
Legislative Council Service

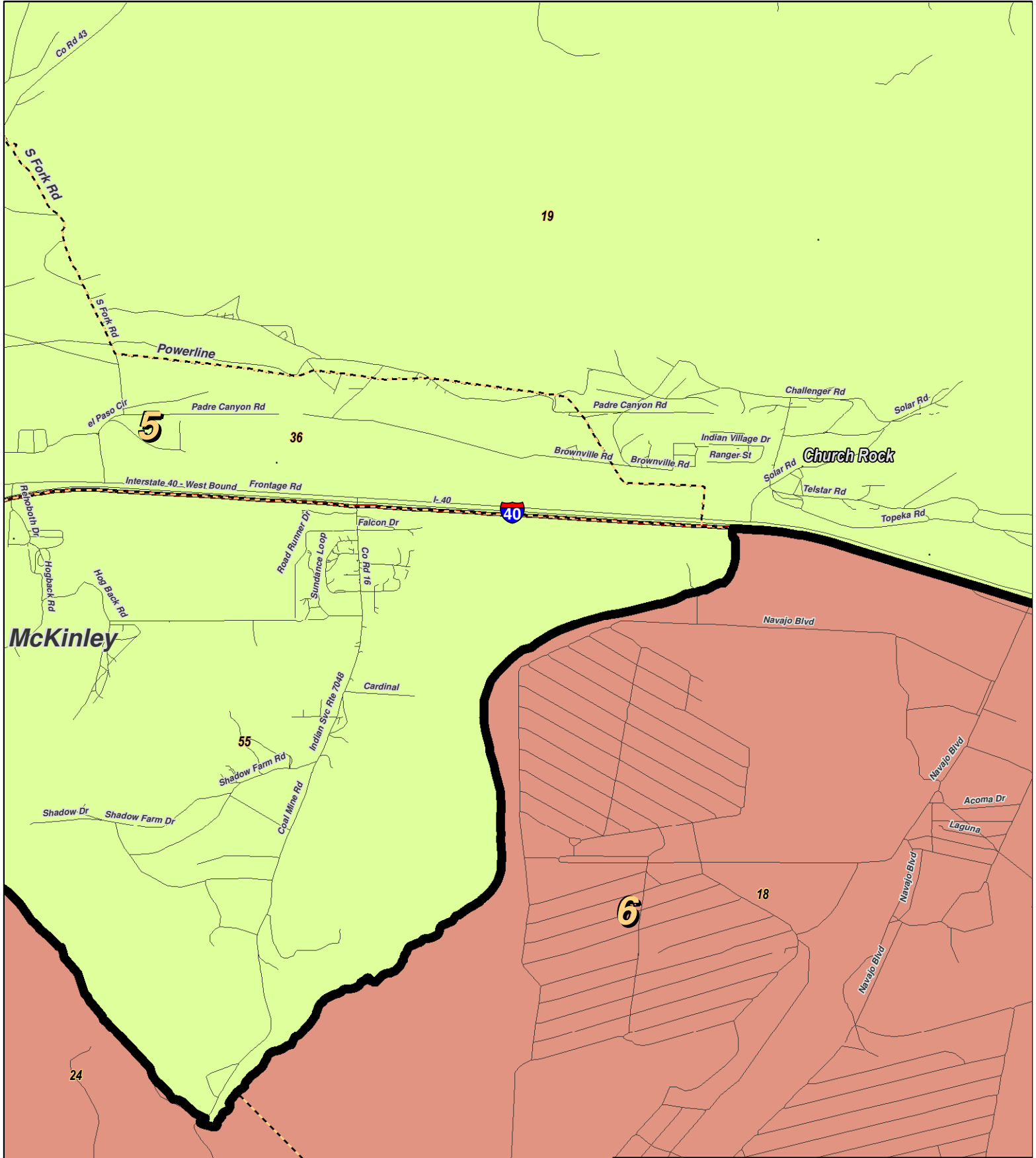
Miles

NEW MEXICO

LEGEND Created: March 01, 2012

Precincts	Rivers	Interstate
Counties	Lakes / Ponds	US Highway
		State Highway

Research & Polling, Inc. distributes this map assuming no liability for any errors, omissions, or inaccuracies in the information provided regardless of the cause in reliance upon any maps.



0 1 Miles

RESEARCH & POLLING INC.

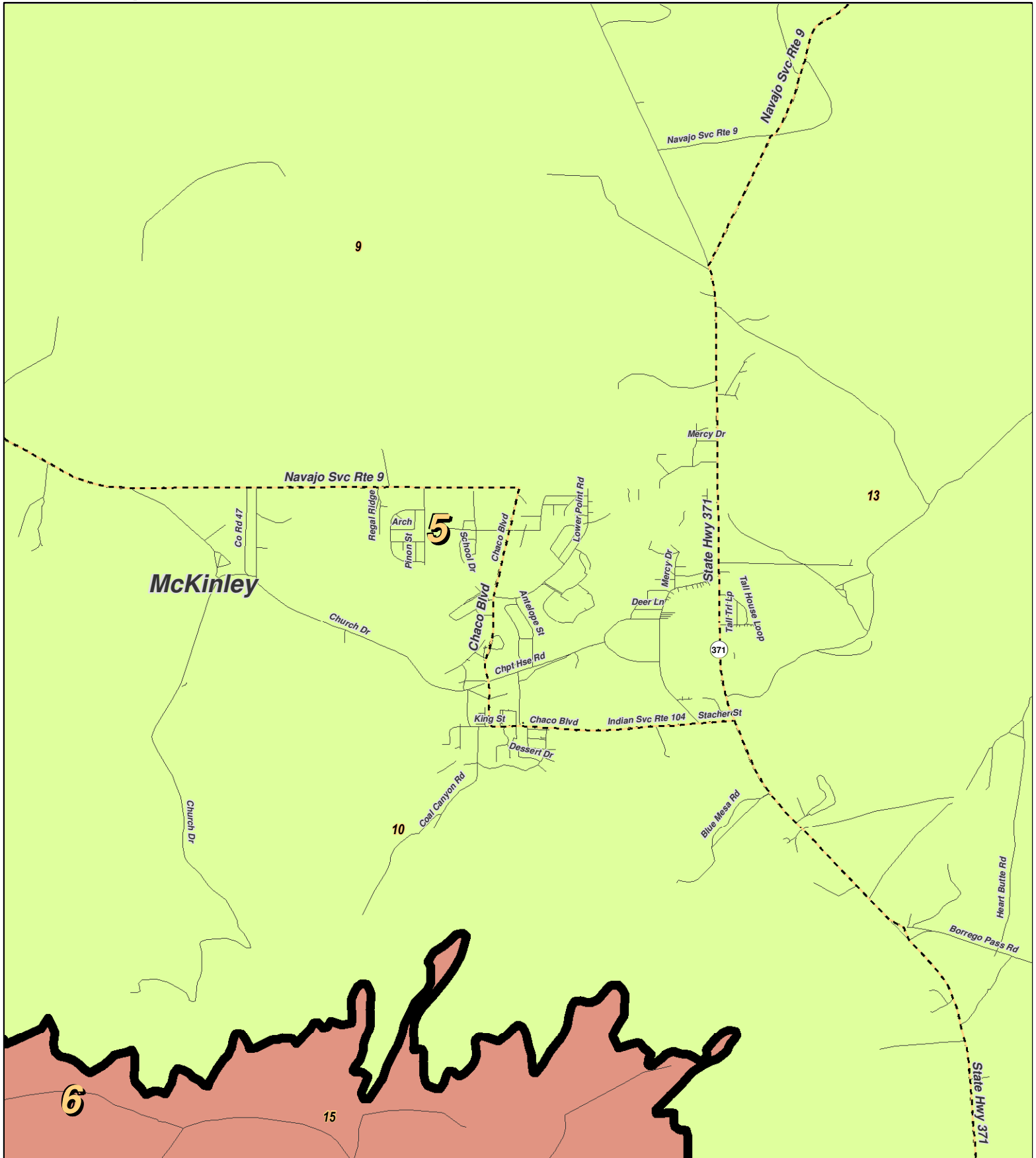
For the New Mexico Legislative Council Service



LEGEND Created: March 01, 2012

Precincts	Rivers	Interstate
Counties	Lakes / Ponds	US Highway
		State Highway

Research & Polling, Inc. distributes this map assuming no liability for any errors, omissions, or inaccuracies in the information provided regardless of the cause in reliance upon any maps.



RESEARCH & POLLING
INC.

For the New Mexico
Legislative Council Service

0 1 Miles

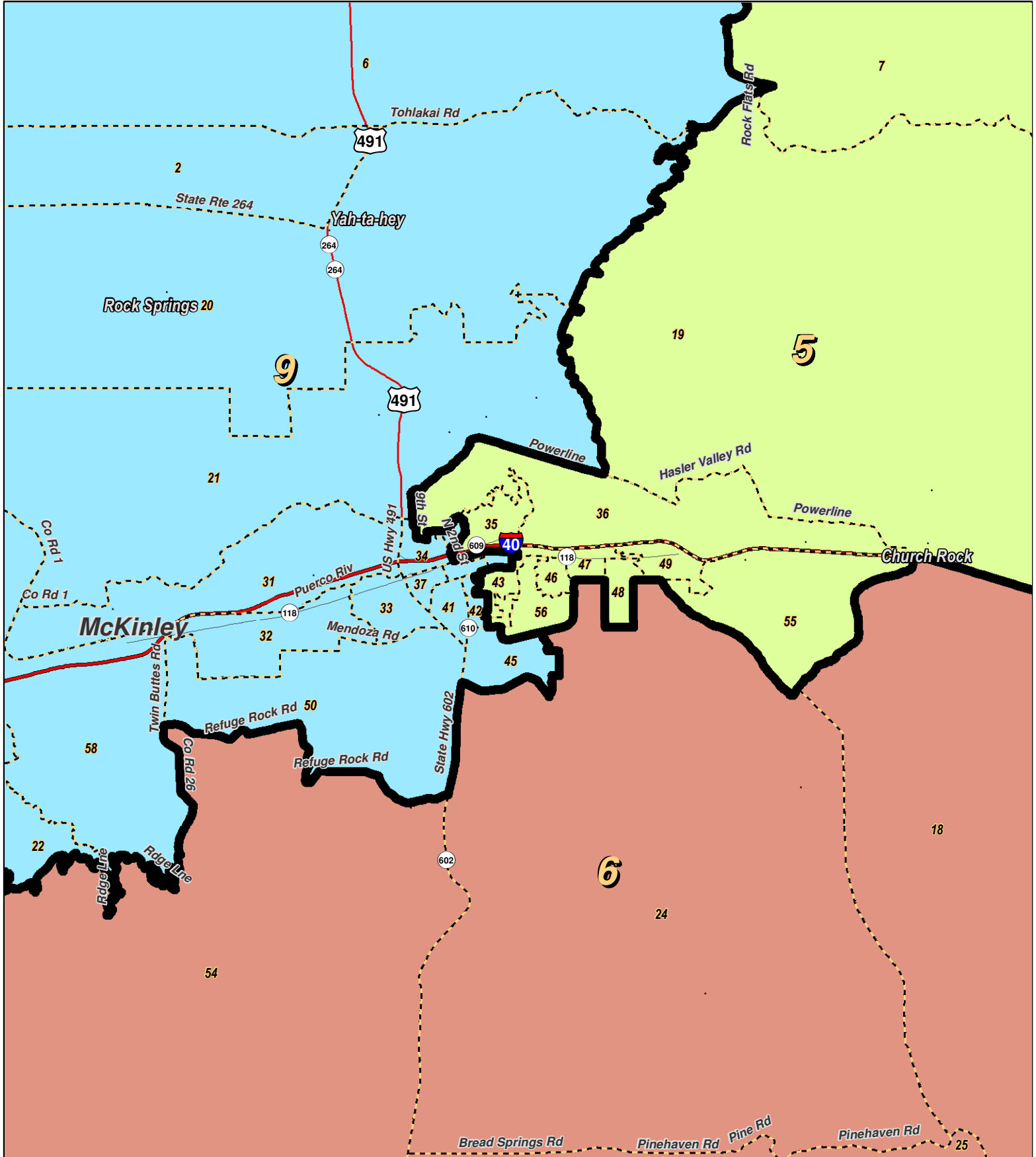
N



LEGEND Created: March 01, 2012

Precincts	Rivers	Interstate
Counties	Lakes / Ponds	US Highway
		State Highway

Research & Polling, Inc. distributes this map assuming no liability for any errors, omissions, or inaccuracies in the information provided regardless of the cause in reliance upon any maps.



0 1 2 3 4 Miles

RESEARCH & POLLING INC.

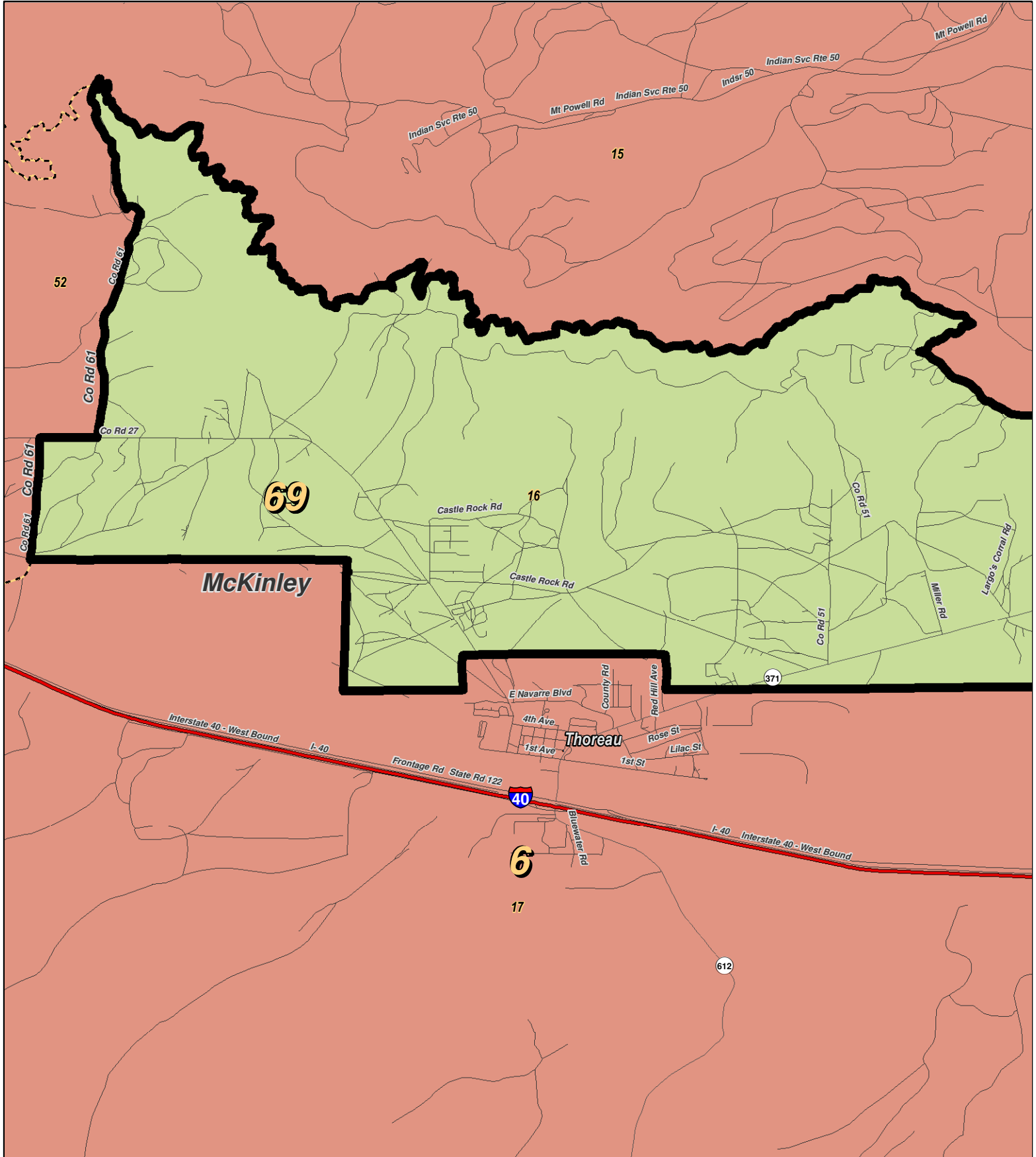
For the New Mexico Legislative Council Service



LEGEND Created: March 01, 2012

Precincts	Rivers	Interstate
Counties	Lakes / Ponds	US Highway
		State Highway

Research & Polling, Inc. distributes this map assuming no liability for any errors, omissions, or inaccuracies in the information provided regardless of the cause in reliance upon any maps.



RESEARCH & POLLING
INC.

For the New Mexico
Legislative Council Service

0 1
Miles

N

NEW MEXICO

LEGEND Created: March 01, 2012

Precincts	Rivers	Interstate
Counties	Lakes / Ponds	US Highway
		State Highway

Research & Polling, Inc. distributes this map assuming no liability for any errors, omissions, or inaccuracies in the information provided regardless of the cause in reliance upon any maps.

**NM House
 HD_District_Court_1
 (Court Adopted on Remand February 2012)**

District: 6

District: 6				Adult Non-Hispanic		
County/ Precinct	Total Population	Adult Hispanic	Total Adult Native American	White	Native American	Black
CI 1	178	13.2%	20.5%	67.5%	15.2%	0.0%
CI 5	2,297	3.7%	76.2%	20.1%	72.9%	0.6%
CI 7	1,033	63.8%	4.3%	32.3%	2.6%	0.1%
CI 8	1,438	51.0%	19.7%	28.5%	15.9%	1.1%
CI 13	777	60.3%	14.5%	27.0%	11.1%	1.0%
CI 14	1,164	36.9%	8.8%	53.5%	7.6%	0.8%
CI 15	3,320	68.3%	10.0%	21.6%	8.5%	0.6%
MC 15	2,325	1.1%	98.3%	0.8%	97.5%	0.1%
MC 17	1,764	9.5%	65.1%	26.9%	61.1%	0.7%
MC 18	411	5.0%	86.1%	10.7%	81.5%	0.7%
MC 24	1,474	4.7%	90.6%	5.6%	88.7%	0.0%
MC 25	2,224	2.6%	87.0%	10.5%	86.2%	0.1%
MC 26	604	6.3%	30.4%	62.8%	26.8%	0.2%
MC 27	2,620	2.7%	96.8%	1.9%	94.4%	0.0%
MC 28	1,490	1.4%	87.8%	10.2%	86.2%	0.6%
MC 29	1,494	0.7%	99.4%	0.4%	98.6%	0.0%
MC 30	2,277	2.0%	97.8%	1.1%	96.1%	0.1%
MC 52	726	8.3%	55.5%	35.5%	52.8%	1.2%
MC 53	917	0.3%	99.5%	0.5%	98.4%	0.0%
MC 54	983	3.8%	94.0%	3.8%	91.0%	0.0%
District Totals	29,516	19.2%	65.1%	16.1%	63.0%	0.4%