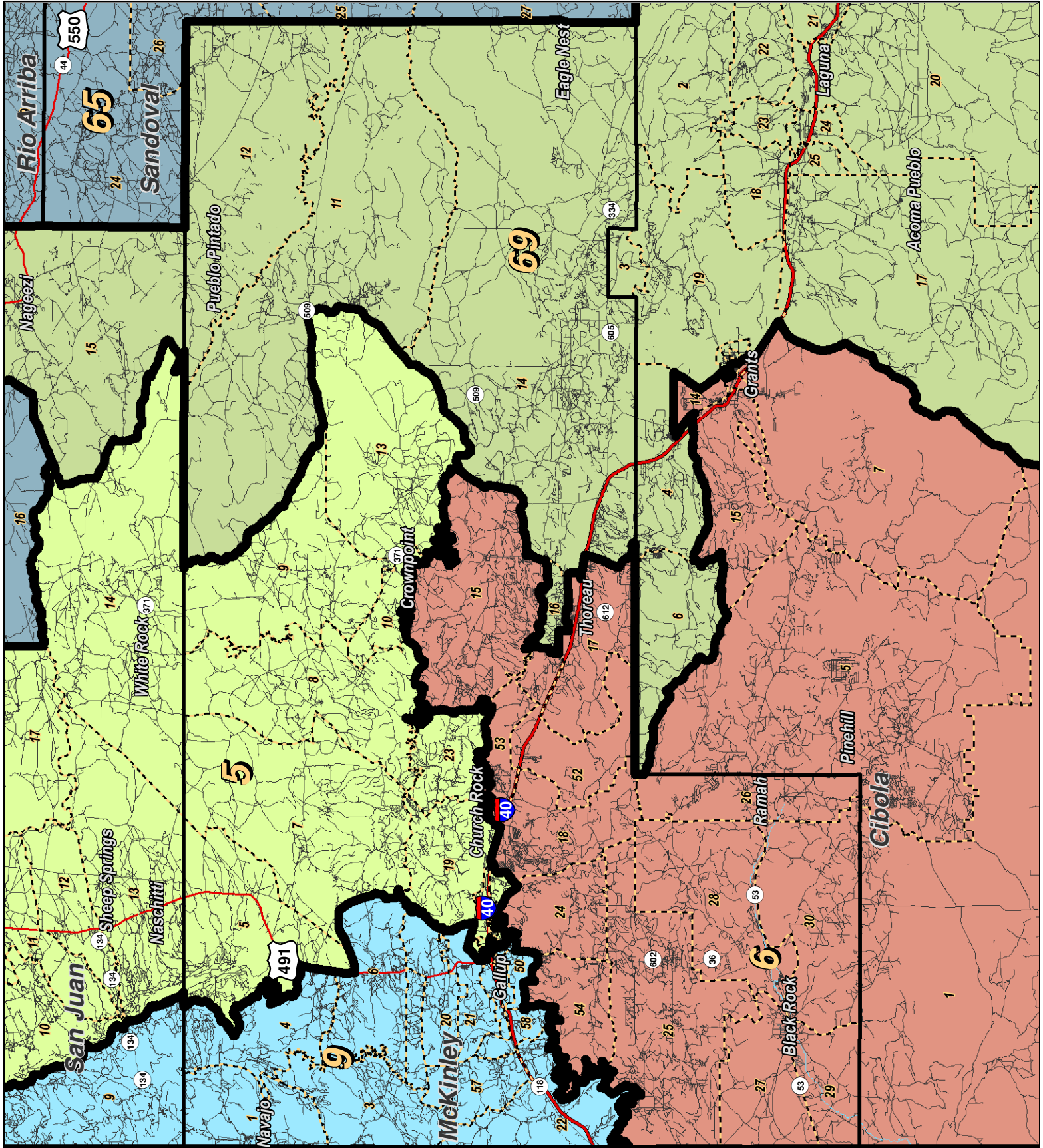


LEGEND Created: March 02, 2012

Precincts	Rivers	Interstate
Counties	Lakes / Ponds	US Highway
		State Highway

Research & Polling, Inc. distributes this map assuming no liability for any errors, omissions, or inaccuracies in the information provided regardless of the cause in reliance upon any maps.





For the New Mexico
Legislative Council Service

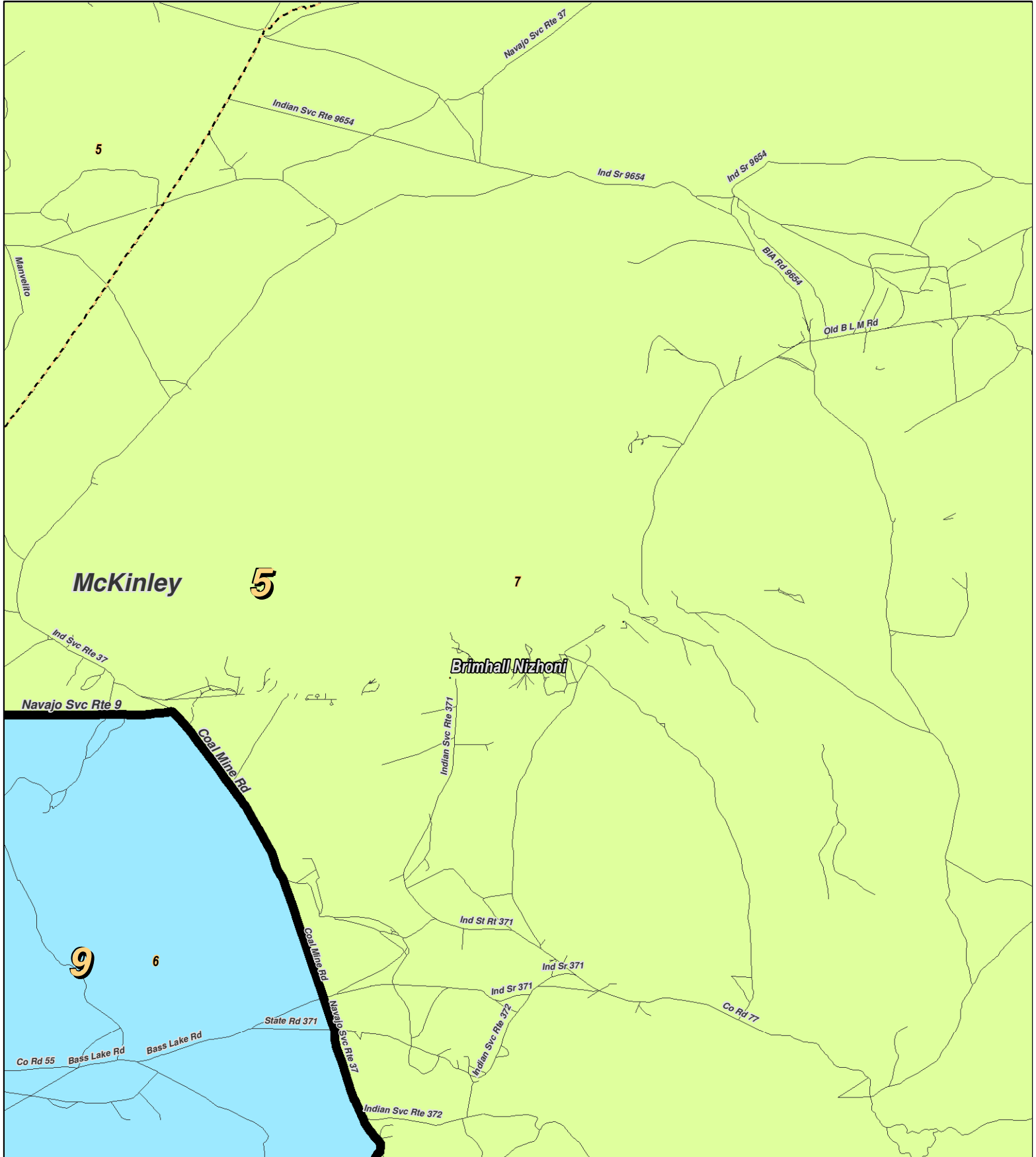
Miles

NEW MEXICO

LEGEND Created: March 01, 2012

Precincts	Rivers	Interstate
Counties	Lakes / Ponds	US Highway
		State Highway

Research & Polling, Inc. distributes this map assuming no liability for any errors, omissions, or inaccuracies in the information provided regardless of the cause in reliance upon any maps.



0 1 Miles

RESEARCH & POLLING
 INC

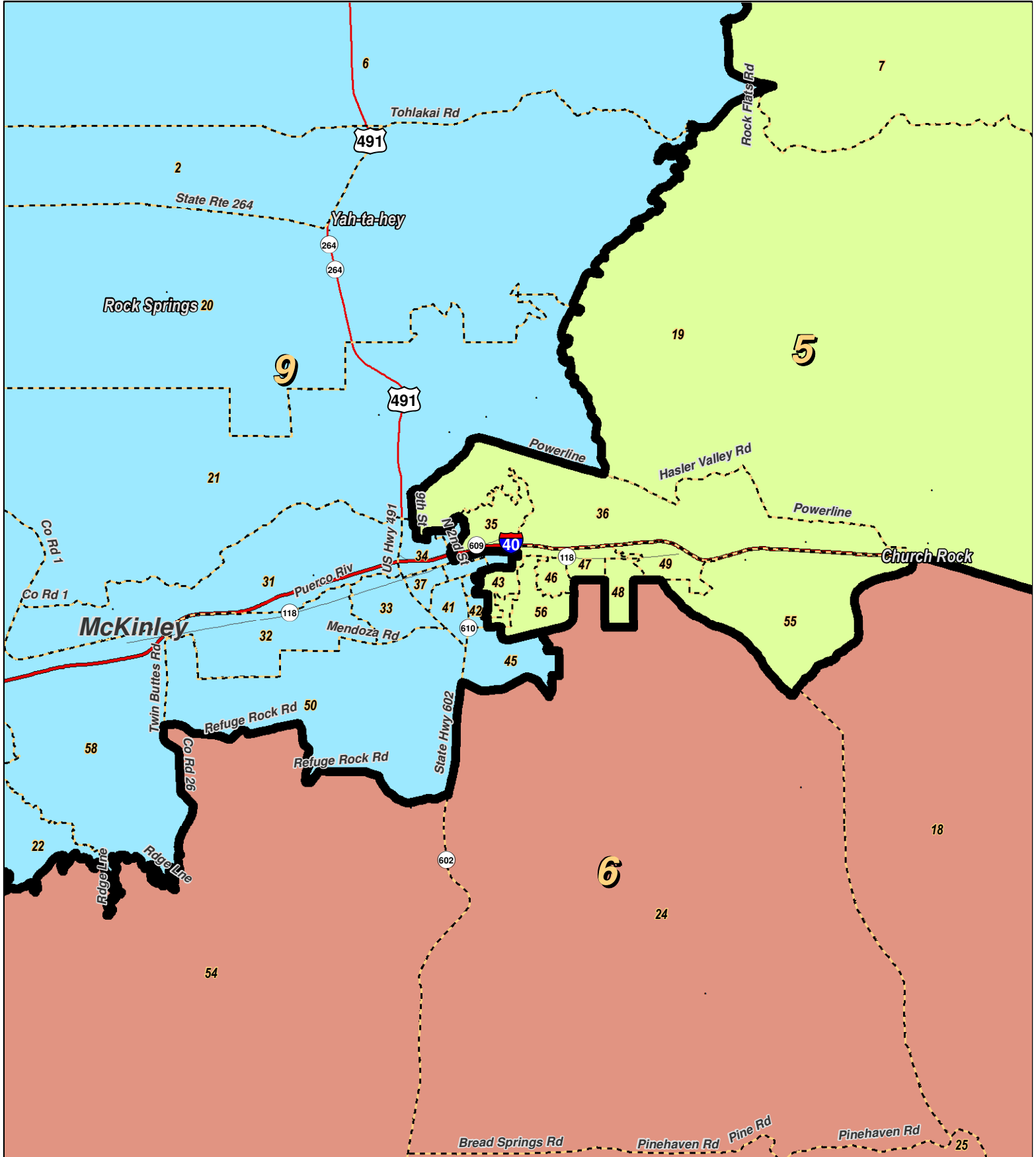
For the New Mexico
 Legislative Council Service



LEGEND Created: March 01, 2012

Precincts	Rivers	Interstate
Counties	Lakes / Ponds	US Highway
		State Highway

Research & Polling, Inc. distributes this map assuming no liability for any errors, omissions, or inaccuracies in the information provided regardless of the cause in reliance upon any maps.



0 1 2 3 4 Miles

RESEARCH & POLLING INC.

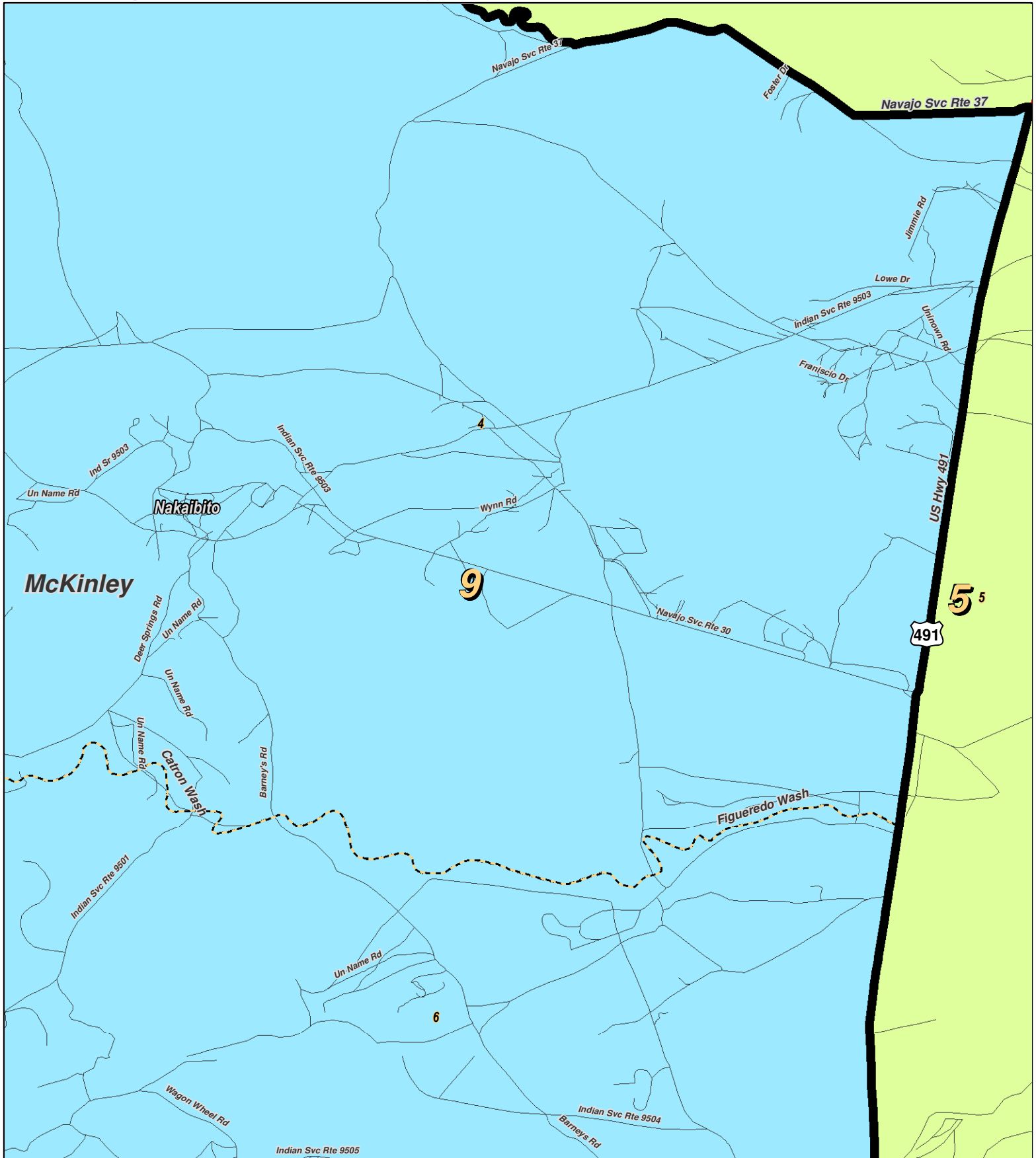
For the New Mexico Legislative Council Service



LEGEND Created: March 01, 2012

Precincts	Rivers	Interstate
Counties	Lakes / Ponds	US Highway
		State Highway

Research & Polling, Inc. distributes this map assuming no liability for any errors, omissions, or inaccuracies in the information provided regardless of the cause in reliance upon any maps.



0 1 Miles

RESEARCH & POLLING INC.

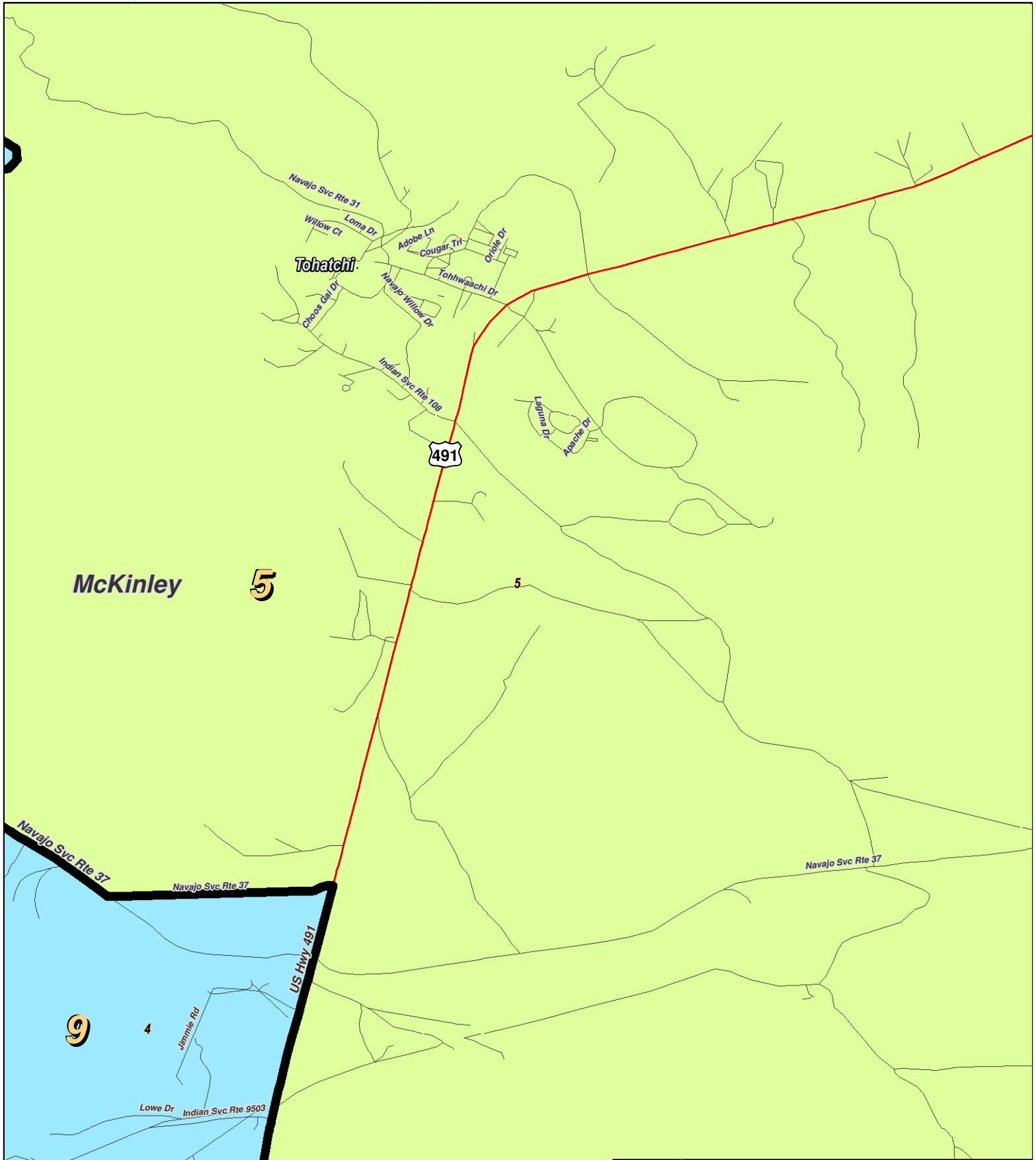
For the New Mexico Legislative Council Service



LEGEND Created: March 01, 2012

Precincts	Rivers	Interstate
Counties	Lakes / Ponds	US Highway
		State Highway

Research & Polling, Inc. distributes this map assuming no liability for any errors, omissions, or inaccuracies in the information provided regardless of the cause in reliance upon any maps.



For the New Mexico
Legislative Council Service

0 0.9 Miles

NEW MEXICO

LEGEND Created: March 01, 2012

Precincts	Rivers	Interstate
Counties	Lakes / Ponds	US Highway
		State Highway

Research & Polling, Inc. distributes this map assuming no liability for any errors, omissions, or inaccuracies in the information provided regardless of the cause in reliance upon any maps.

**NM House
 HD_District_Court_1
 (Court Adopted on Remand February 2012)**

District: 9

County/ Precinct	Total Population	Adult Hispanic	Total Adult Native American	Adult Non-Hispanic		
				White	Native American	Black
MC 1	2,273	1.6%	96.6%	2.2%	94.9%	0.3%
MC 2	608	4.9%	90.9%	4.2%	90.1%	0.0%
MC 3	1,531	3.9%	91.8%	6.5%	88.3%	0.1%
MC 4	978	1.3%	99.1%	0.4%	97.2%	0.0%
MC 6	2,146	0.6%	99.5%	0.4%	98.5%	0.0%
MC 20	1,684	4.2%	92.2%	4.3%	89.7%	0.2%
MC 21	1,636	46.2%	46.1%	11.9%	39.1%	0.7%
MC 22	1,232	2.0%	92.7%	5.6%	91.1%	0.2%
MC 31	1,418	22.6%	54.1%	23.1%	49.0%	1.5%
MC 32	579	14.8%	57.5%	26.9%	54.9%	0.5%
MC 33	2,294	40.8%	50.0%	11.4%	44.6%	1.6%
MC 34	743	50.6%	44.3%	8.6%	36.3%	1.7%
MC 37	325	63.2%	25.2%	12.8%	19.0%	0.4%
MC 38	930	55.9%	39.0%	7.9%	33.3%	1.5%
MC 39	920	21.8%	38.1%	37.5%	34.2%	1.2%
MC 40	726	23.1%	48.9%	28.0%	44.3%	1.8%
MC 41	1,316	45.0%	42.3%	15.4%	35.7%	1.1%
MC 42	349	22.9%	20.9%	53.5%	16.7%	1.9%
MC 45	1,035	18.0%	36.1%	35.1%	32.2%	2.9%
MC 50	349	18.9%	59.7%	28.3%	48.9%	0.0%
MC 57	781	1.9%	97.0%	1.9%	94.4%	0.0%
MC 58	1,391	15.8%	66.3%	19.3%	61.8%	0.5%
MC 59	478	25.1%	30.1%	44.3%	25.3%	1.4%
SJ 8	1,927	0.7%	99.0%	0.4%	98.5%	0.0%
SJ 9	436	2.8%	96.3%	2.5%	94.5%	0.0%
District Totals	28,085	18.3%	70.0%	12.3%	66.3%	0.7%