

0 5 10 15 20 Miles

RESEARCH & POLLING INC.

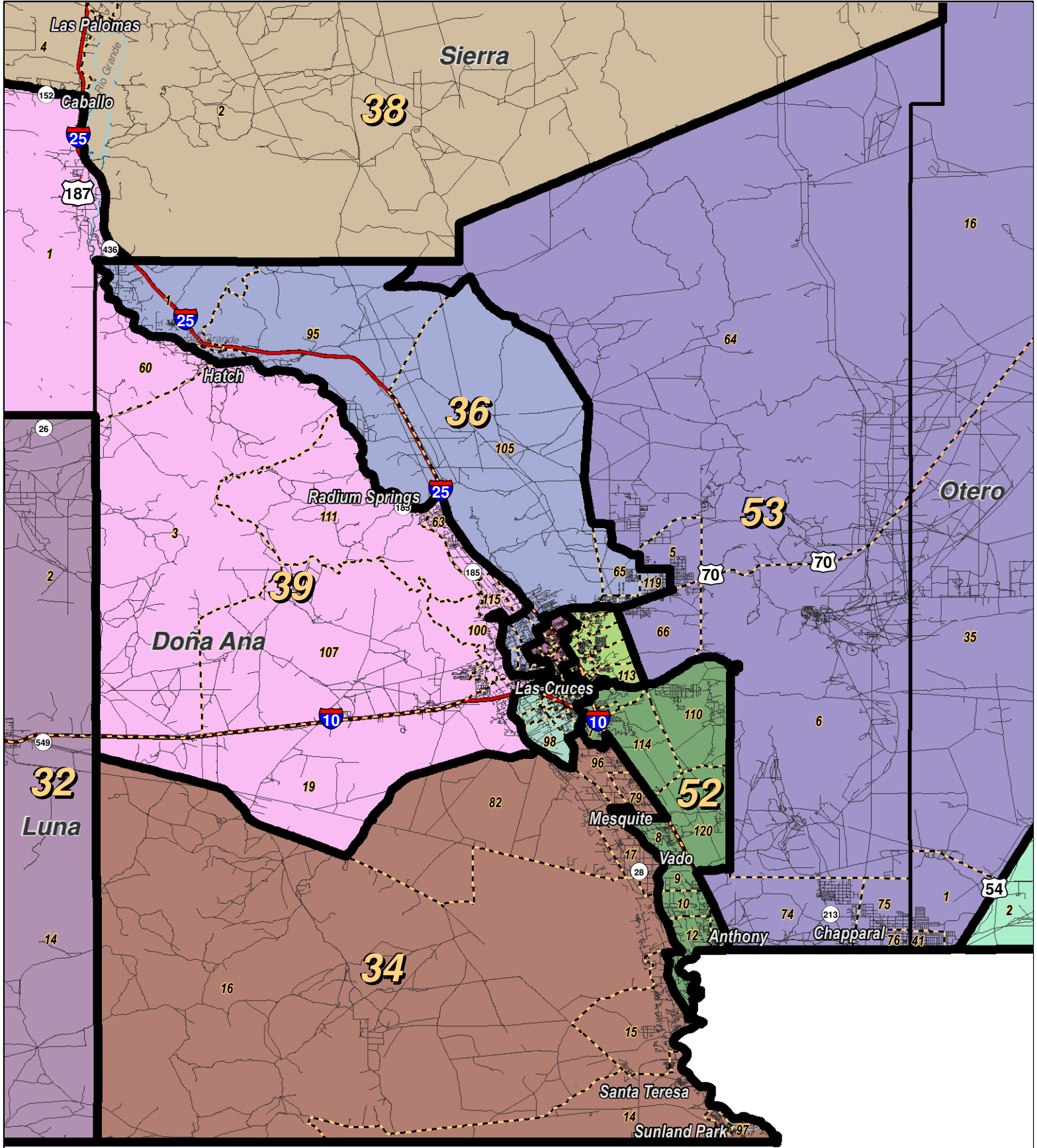
For the New Mexico Legislative Council Service



LEGEND Created: March 02, 2012

Precincts	Rivers	Interstate
Counties	Lakes / Ponds	US Highway
		State Highway

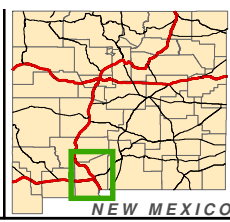
Research & Polling, Inc. distributes this map assuming no liability for any errors, omissions, or inaccuracies in the information provided regardless of the cause in reliance upon any maps.



0 4 8 12 16 Miles

RESEARCH & POLLING INC.

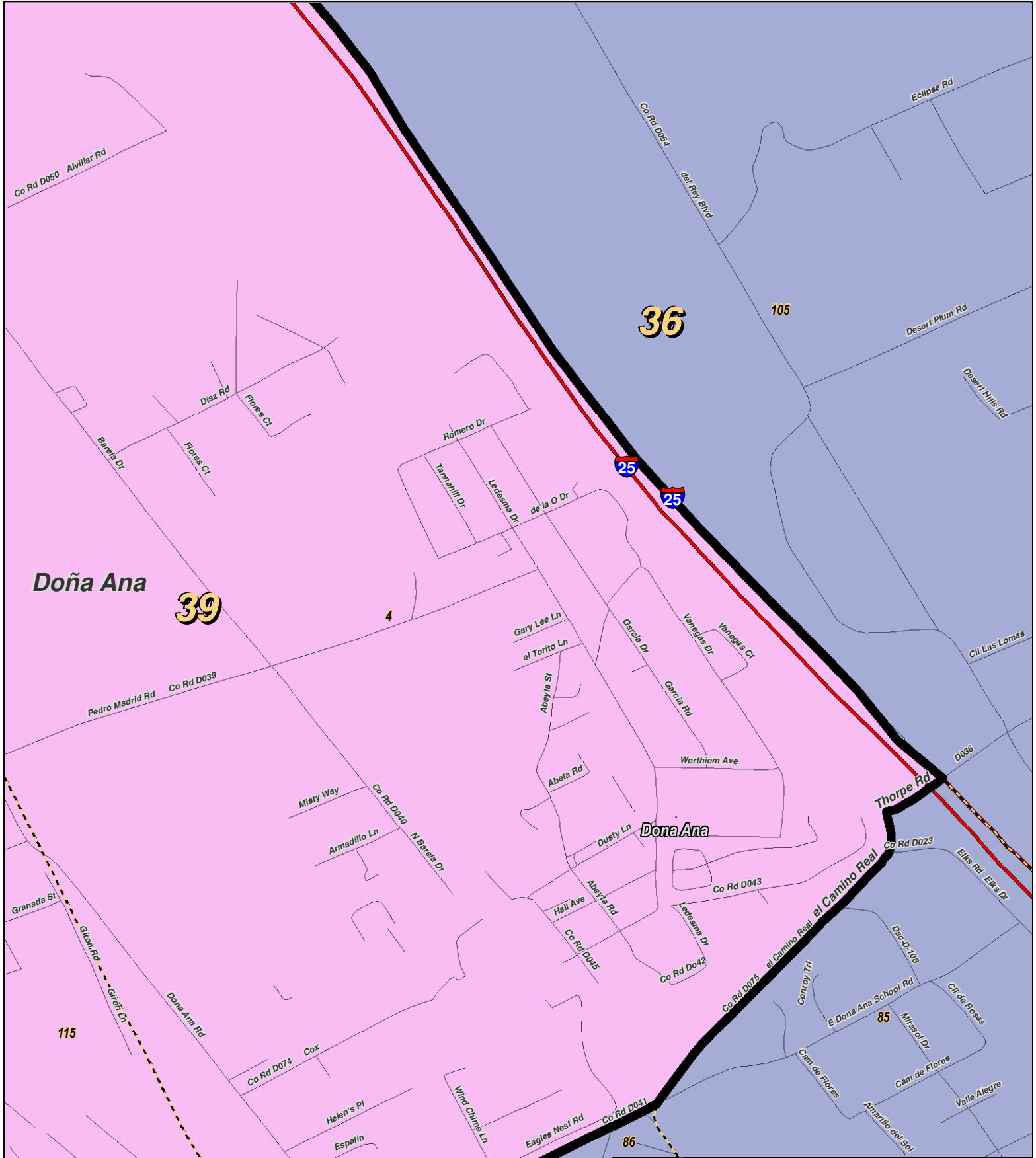
For the New Mexico Legislative Council Service



LEGEND Created: March 01, 2012

Precincts	Rivers	Interstate
Counties	Lakes / Ponds	US Highway
		State Highway

Research & Polling, Inc. distributes this map assuming no liability for any errors, omissions, or inaccuracies in the information provided regardless of the cause in reliance upon any maps.

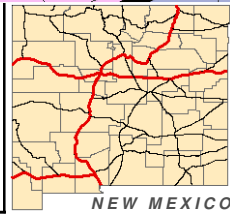


0 0.3 Miles

RESEARCH & POLLING INC.

For the New Mexico
 Legislative Council Service

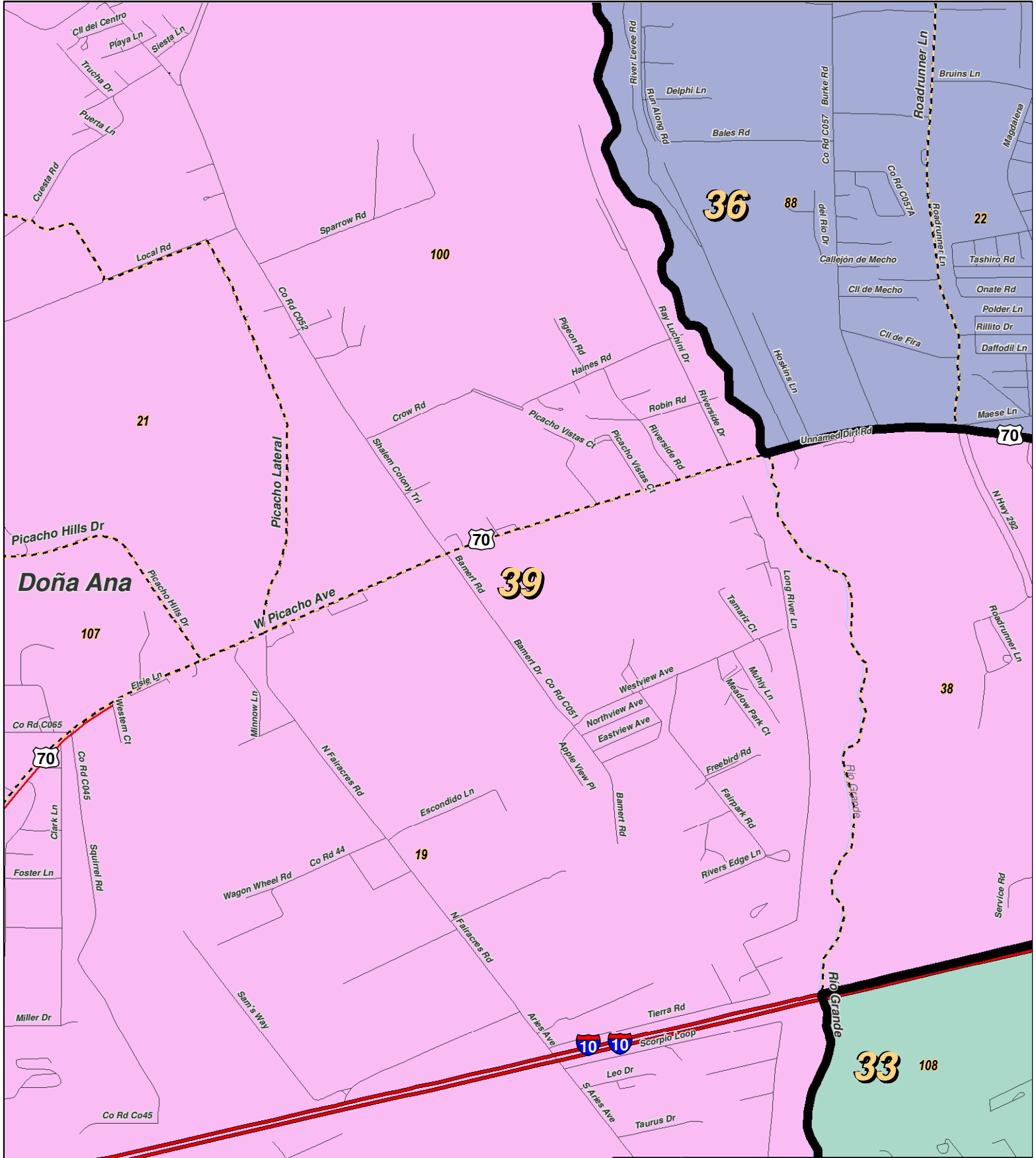
N



LEGEND Created: March 01, 2012

Precincts	Rivers	Interstate
Counties	Lakes / Ponds	US Highway
		State Highway

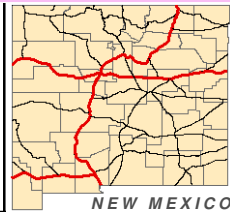
Research & Polling, Inc. distributes this map assuming no liability for any errors, omissions, or inaccuracies in the information provided regardless of the cause in reliance upon any maps.



0 0.5 Miles

RESEARCH & POLLING INC.

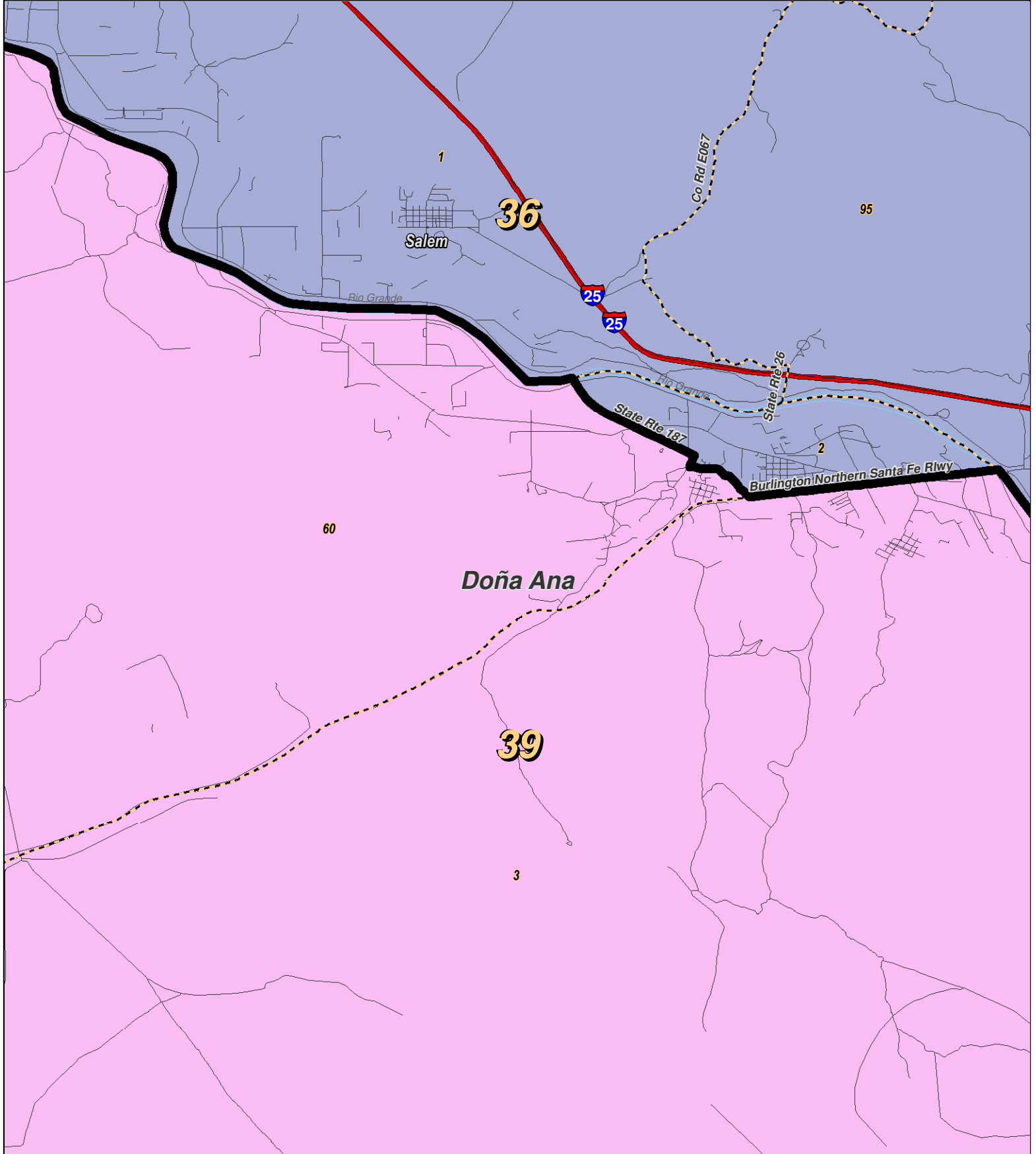
For the New Mexico Legislative Council Service



LEGEND Created: March 01, 2012

Precincts	Rivers	Interstate
Counties	Lakes / Ponds	US Highway
		State Highway

Research & Polling, Inc. distributes this map assuming no liability for any errors, omissions, or inaccuracies in the information provided regardless of the cause in reliance upon any maps.



0 1 2 Miles

RESEARCH & POLLING INC.

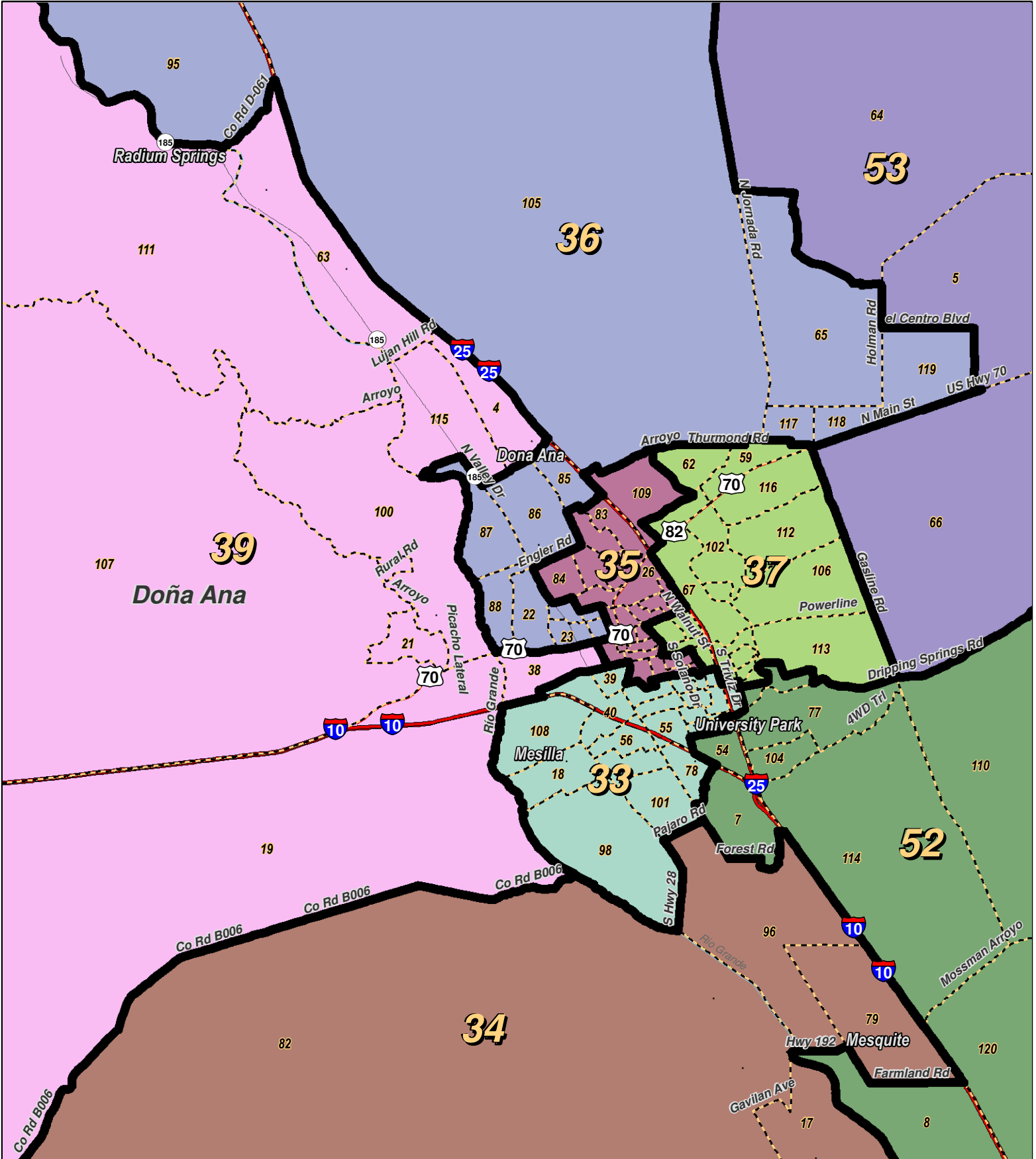
For the New Mexico
 Legislative Council Service



LEGEND Created: March 01, 2012

Precincts	Rivers	Interstate
Counties	Lakes / Ponds	US Highway
		State Highway

Research & Polling, Inc. distributes this map assuming no liability for any errors, omissions, or inaccuracies in the information provided regardless of the cause in reliance upon any maps.



0 1 2 3 4
 Miles

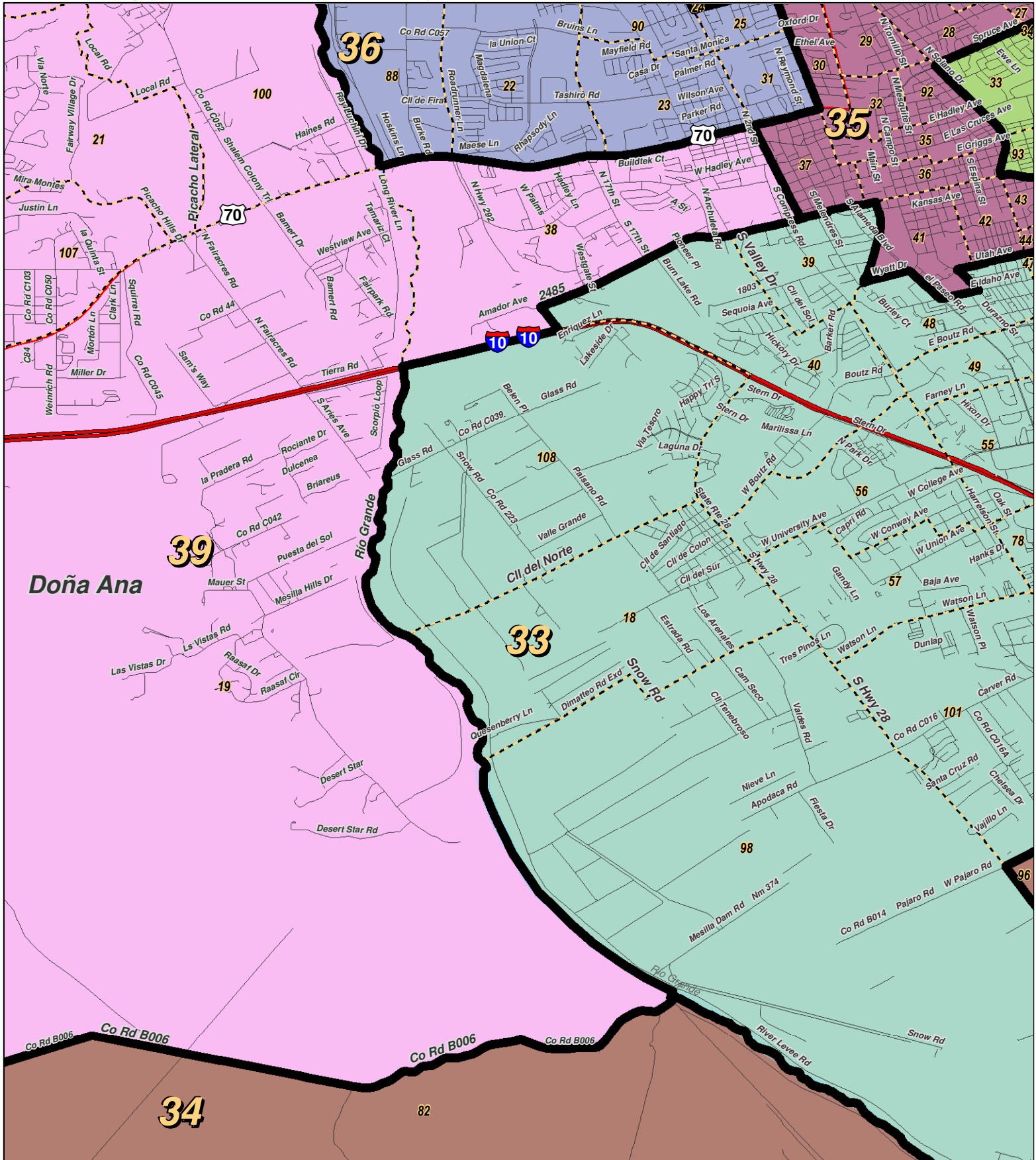
RESEARCH & POLLING INC.
 For the New Mexico Legislative Council Service



LEGEND Created: March 01, 2012

Precincts	Rivers	Interstate
Counties	Lakes / Ponds	US Highway
		State Highway

Research & Polling, Inc. distributes this map assuming no liability for any errors, omissions, or inaccuracies in the information provided regardless of the cause in reliance upon any maps.



RESEARCH & POLLING
INC.

For the New Mexico
Legislative Council Service

0 1 Miles

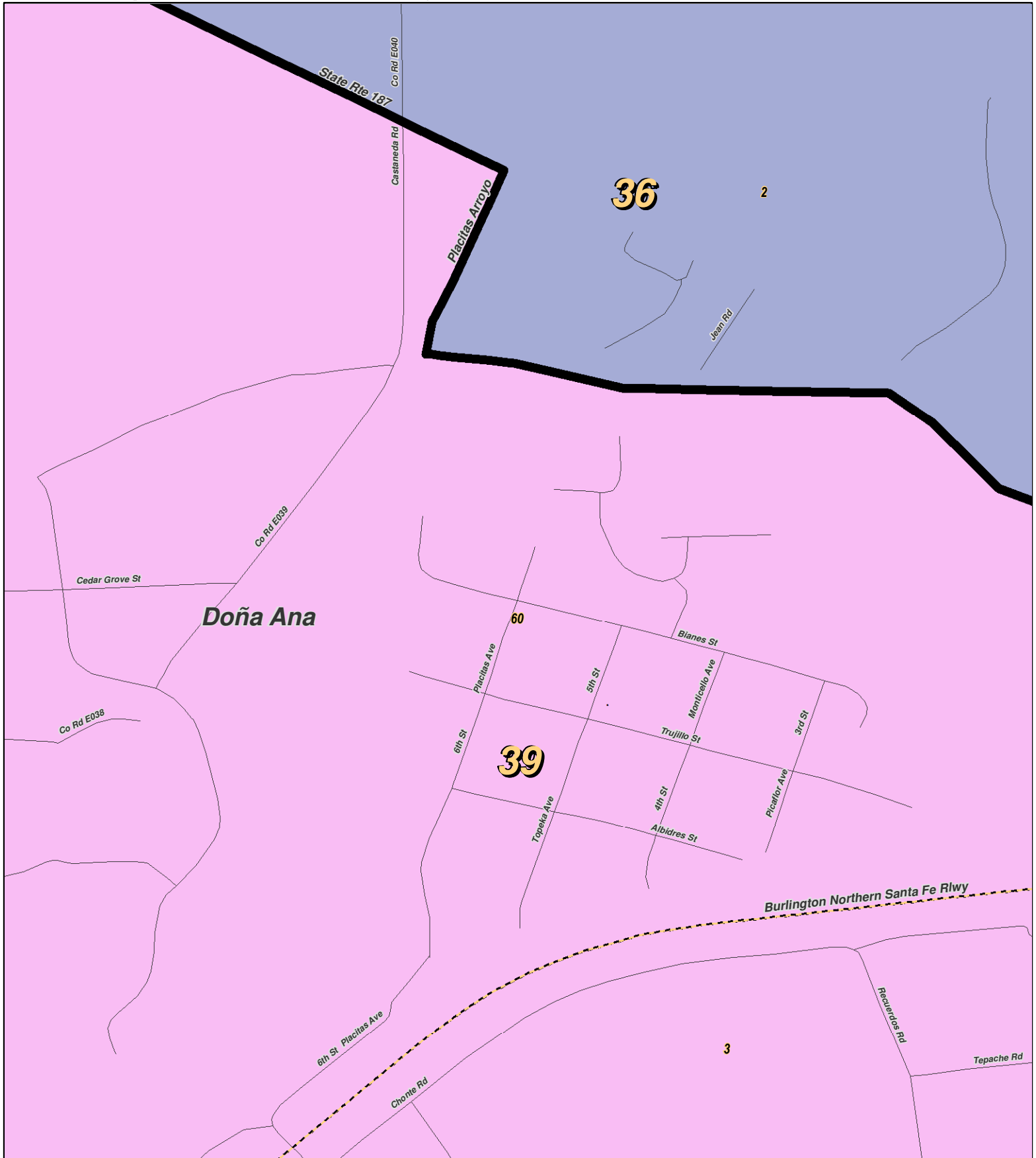
N

NEW MEXICO

LEGEND Created: March 01, 2012

Precincts	Rivers	Interstate
Counties	Lakes / Ponds	US Highway
		State Highway

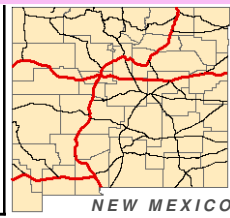
Research & Polling, Inc. distributes this map assuming no liability for any errors, omissions, or inaccuracies in the information provided regardless of the cause in reliance upon any maps.



0 0.1 Miles

RESEARCH & POLLING INC.

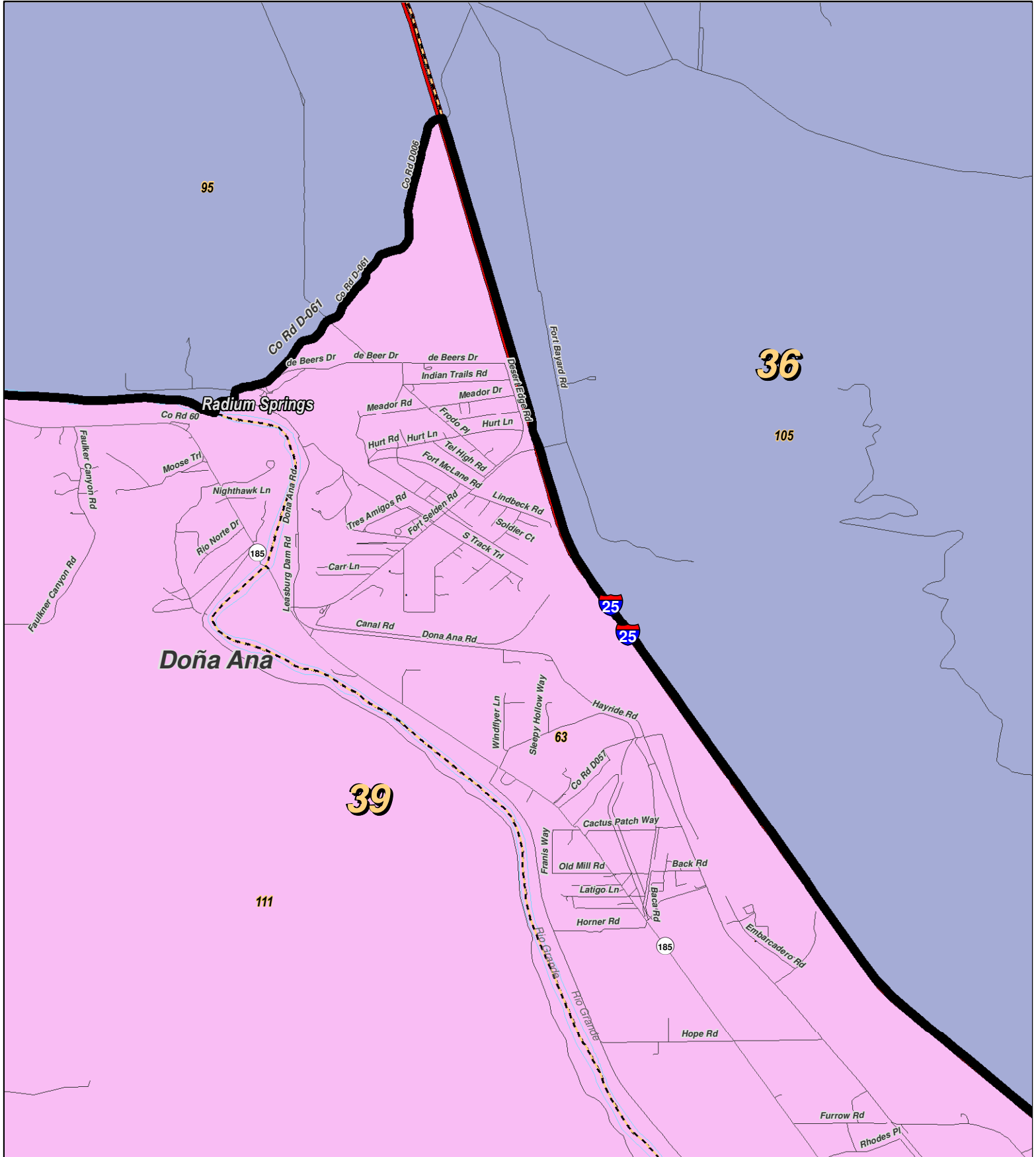
For the New Mexico
Legislative Council Service



LEGEND Created: March 01, 2012

Precincts	Rivers	Interstate
Counties	Lakes / Ponds	US Highway
		State Highway

Research & Polling, Inc. distributes this map assuming no liability for any errors, omissions, or inaccuracies in the information provided regardless of the cause in reliance upon any maps.



RESEARCH & POLLING
INC.

For the New Mexico
Legislative Council Service

0 1 Miles

N

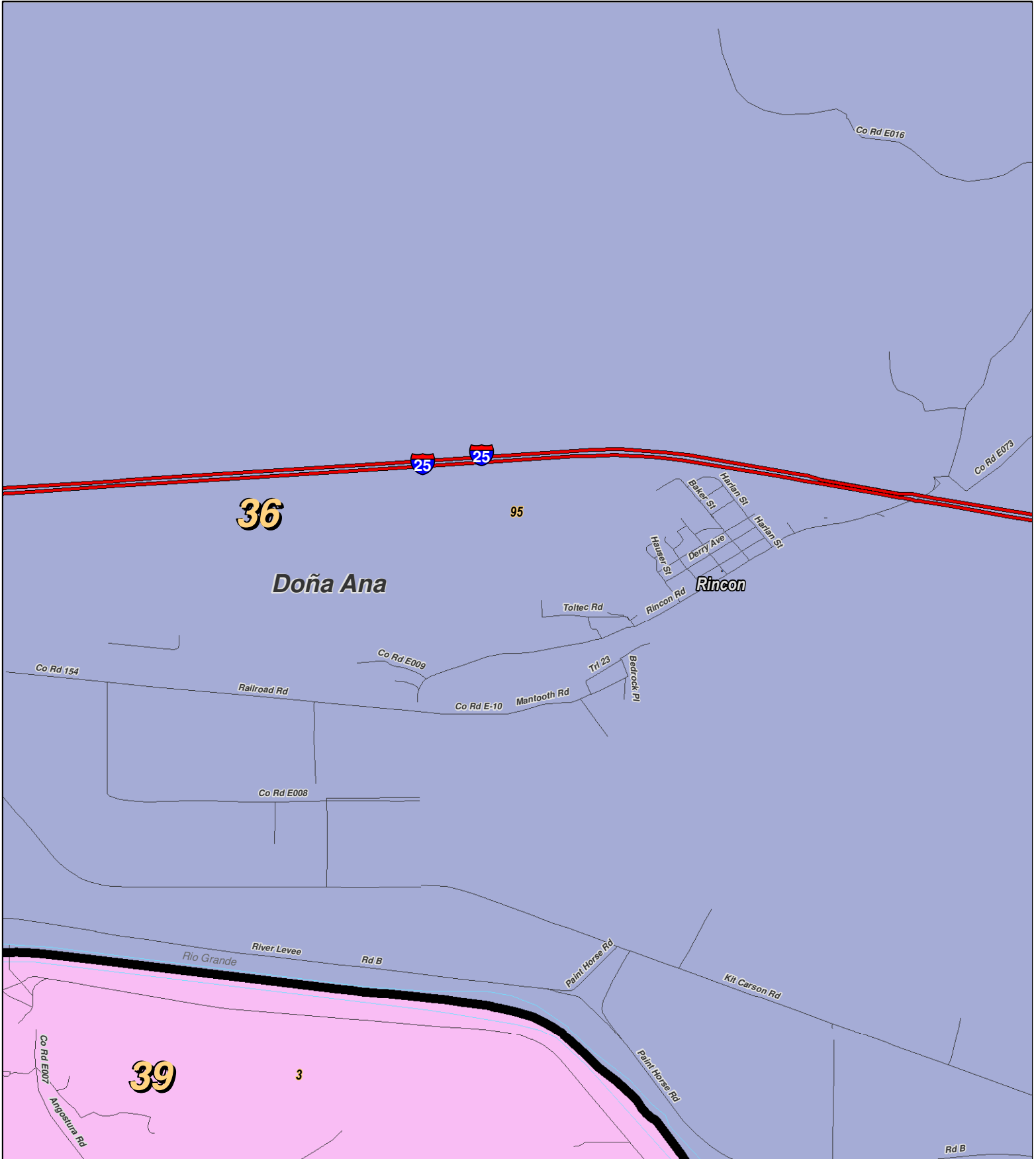


LEGEND

- Precincts
- Counties
- Rivers
- Lakes / Ponds
- Interstate
- US Highway
- State Highway

Created: March 01, 2012

Research & Polling, Inc. distributes this map assuming no liability for any errors, omissions, or inaccuracies in the information provided regardless of the cause in reliance upon any maps.



0 0.6 Miles

RESEARCH & POLLING INC.

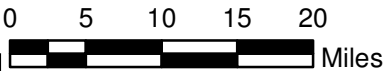
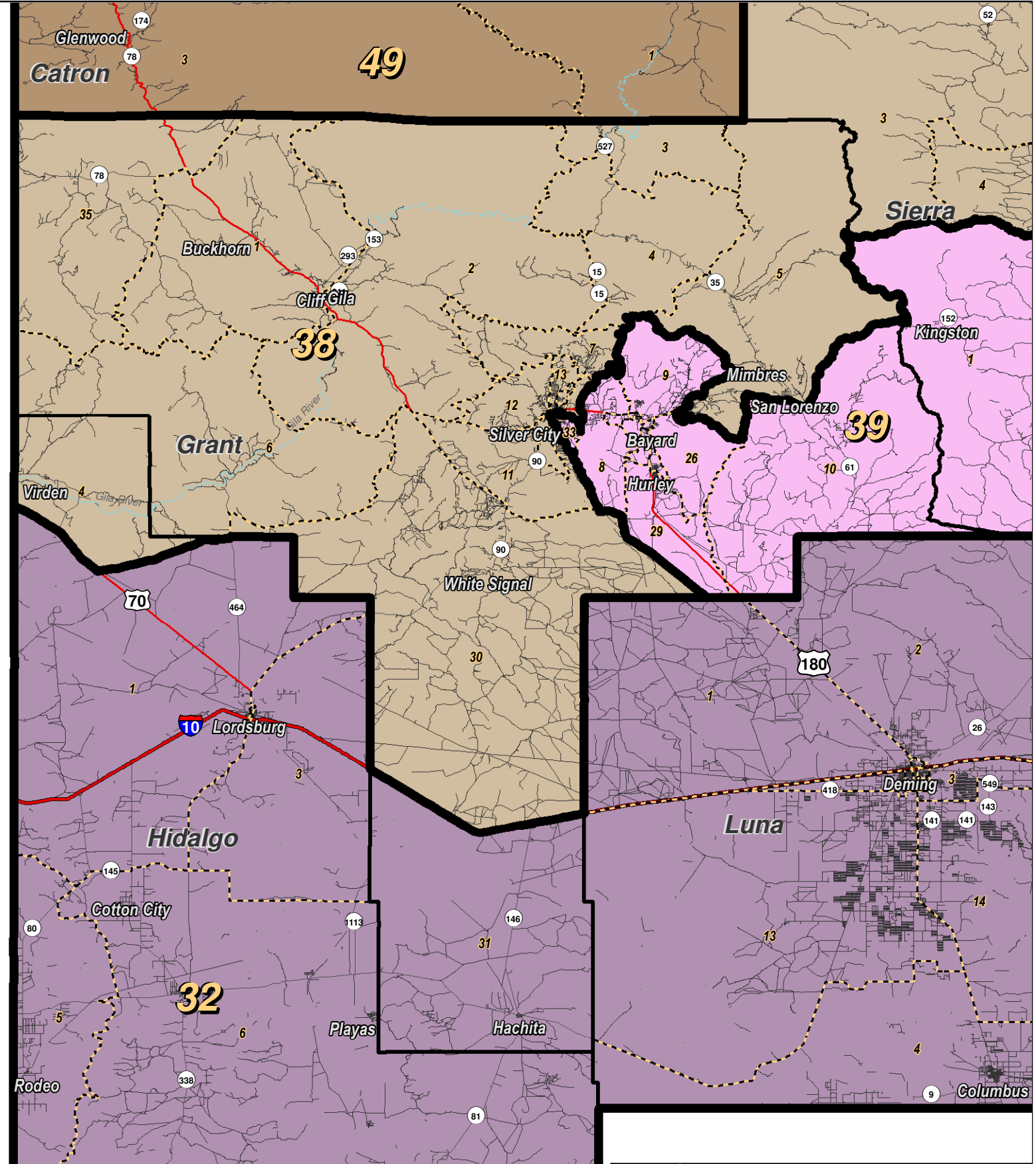
For the New Mexico Legislative Council Service



LEGEND Created: March 01, 2012

Precincts	Rivers	Interstate
Counties	Lakes / Ponds	US Highway
		State Highway

Research & Polling, Inc. distributes this map assuming no liability for any errors, omissions, or inaccuracies in the information provided regardless of the cause in reliance upon any maps.



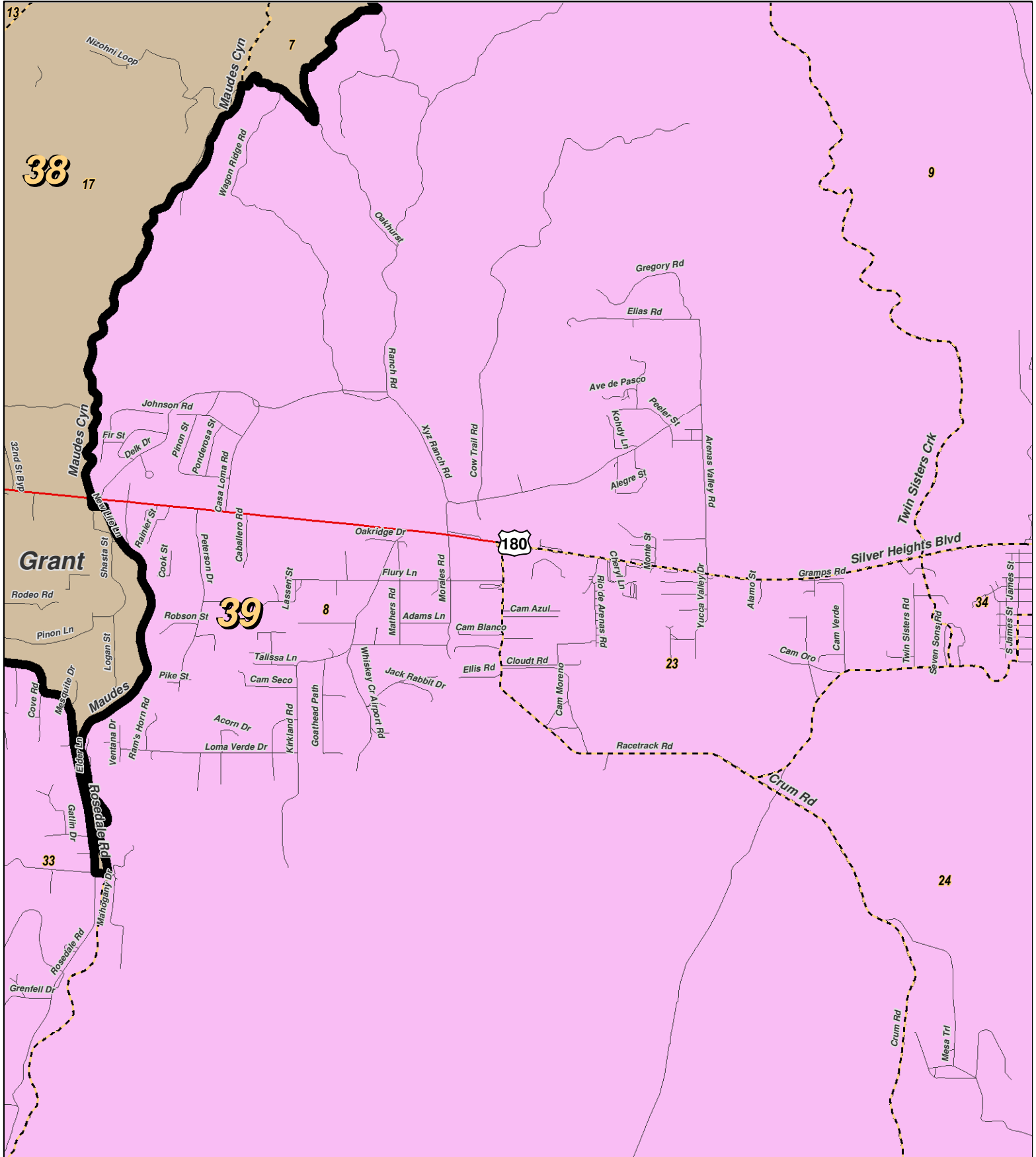
LEGEND Created: March 01, 2012

- Precincts
- Rivers
- Interstate
- Counties
- Lakes / Ponds
- US Highway
- State Highway



For the New Mexico
 Legislative Council Service

Research & Polling, Inc. distributes this map assuming no liability for any errors, omissions, or inaccuracies in the information provided regardless of the cause in reliance upon any maps.



RESEARCH & POLLING
INC.

For the New Mexico
Legislative Council Service

0 1 Miles

N

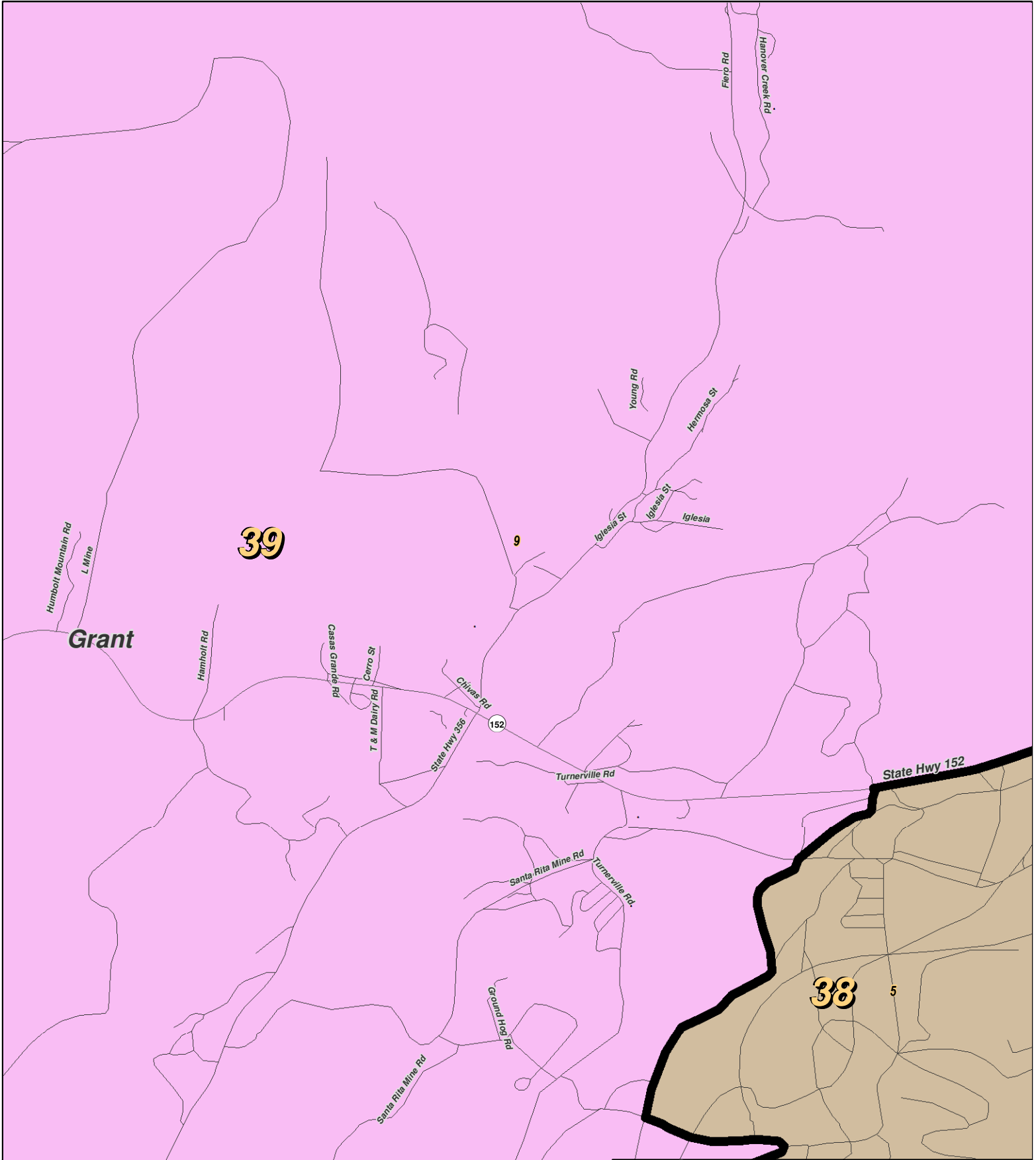


LEGEND

Created: March 01, 2012

- Precincts
- Counties
- ~ Rivers
- ⊕ Lakes / Ponds
- = Interstate
- US Highway
- ~ State Highway

Research & Polling, Inc. distributes this map assuming no liability for any errors, omissions, or inaccuracies in the information provided regardless of the cause in reliance upon any maps.



0 0.6 Miles

RESEARCH & POLLING INC.

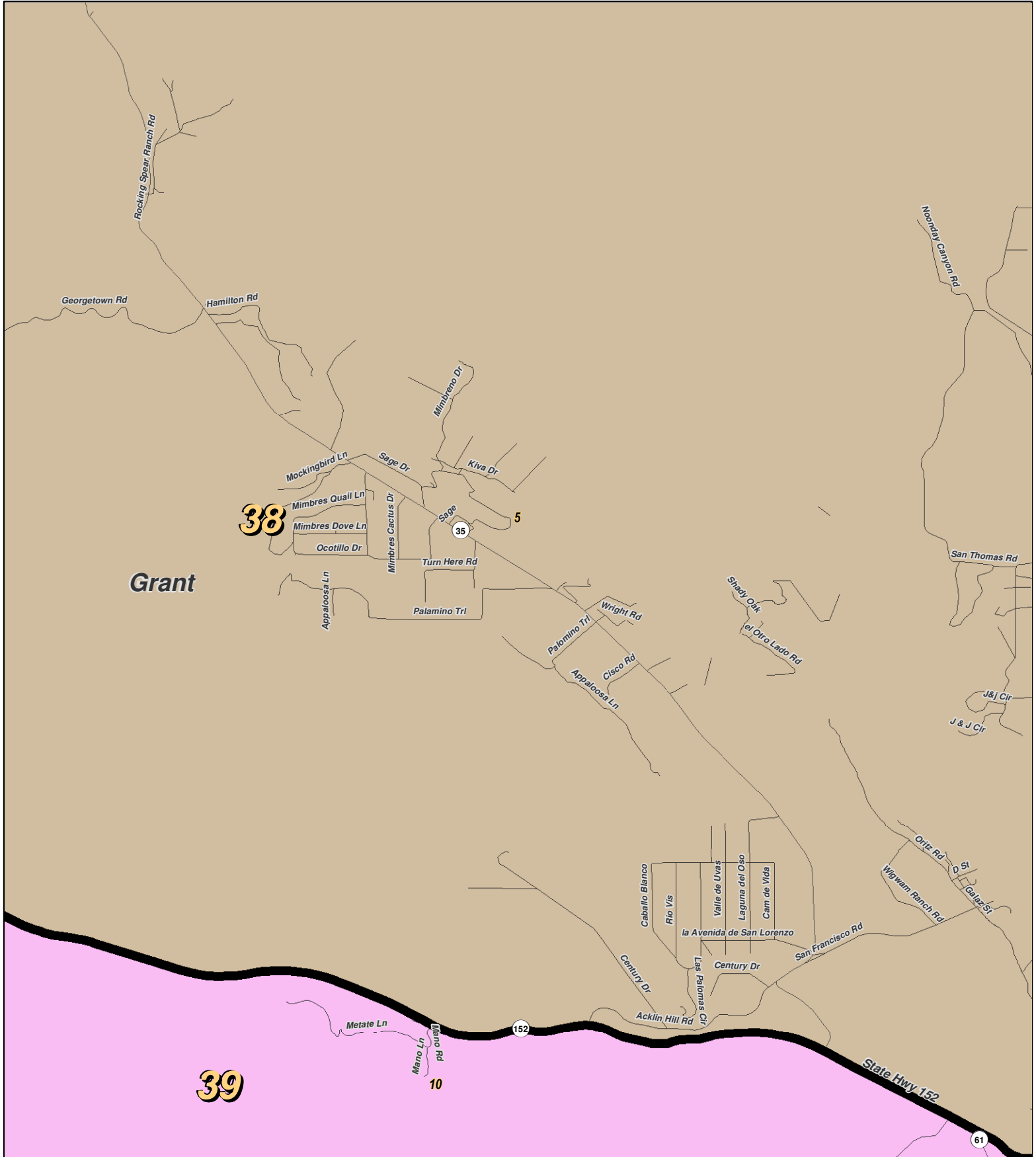
For the New Mexico Legislative Council Service



LEGEND Created: March 01, 2012

Precincts	Rivers	Interstate
Counties	Lakes / Ponds	US Highway
		State Highway

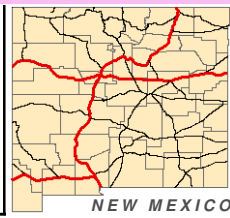
Research & Polling, Inc. distributes this map assuming no liability for any errors, omissions, or inaccuracies in the information provided regardless of the cause in reliance upon any maps.



RESEARCH & POLLING INC.
 For the New Mexico Legislative Council Service

0 1 Miles

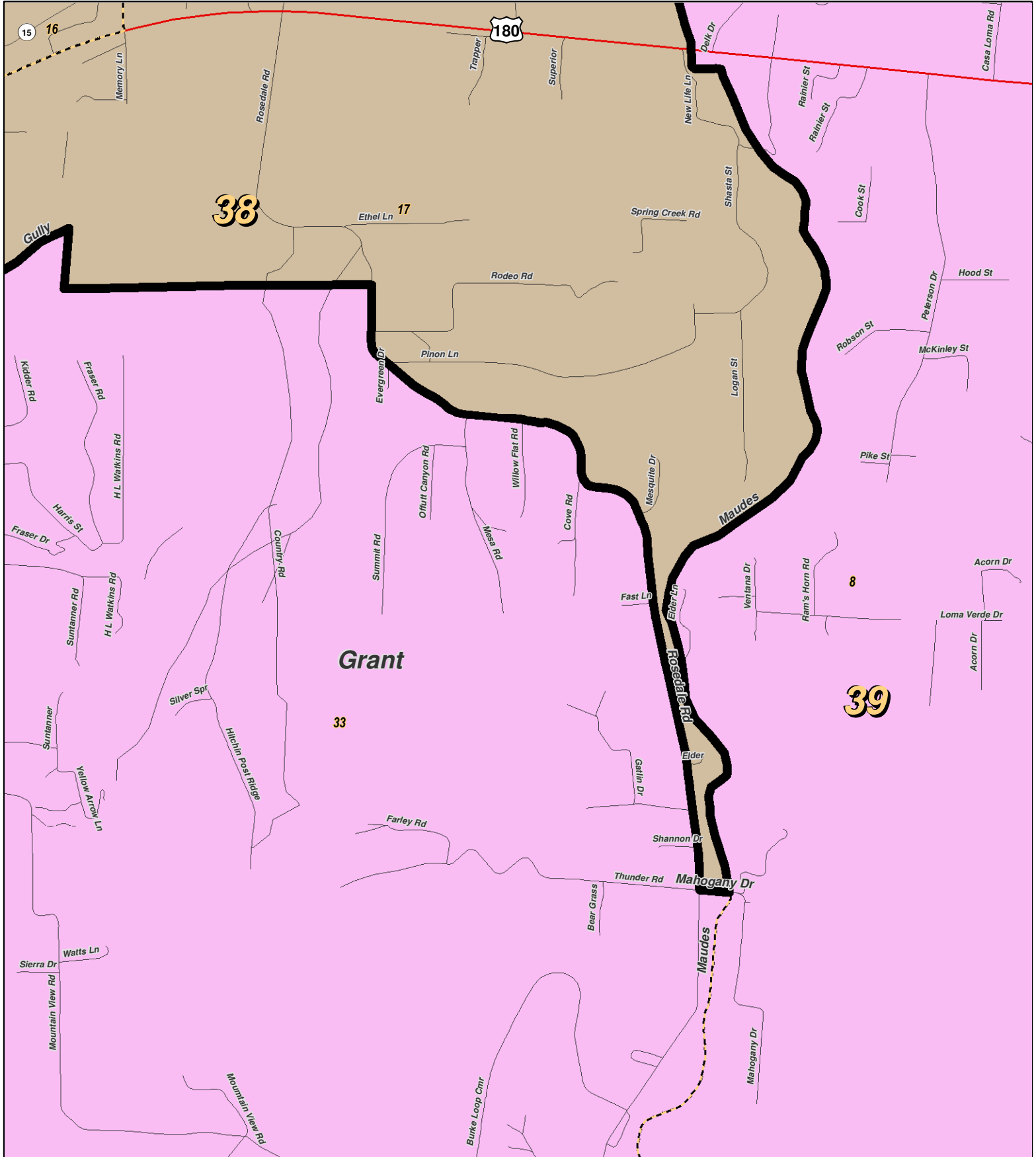
N



LEGEND Created: March 01, 2012

- Precincts
- Rivers
- Interstate
- Counties
- Lakes / Ponds
- US Highway
- State Highway

Research & Polling, Inc. distributes this map assuming no liability for any errors, omissions, or inaccuracies in the information provided regardless of the cause in reliance upon any maps.



0 0.5 Miles

RESEARCH & POLLING INC.

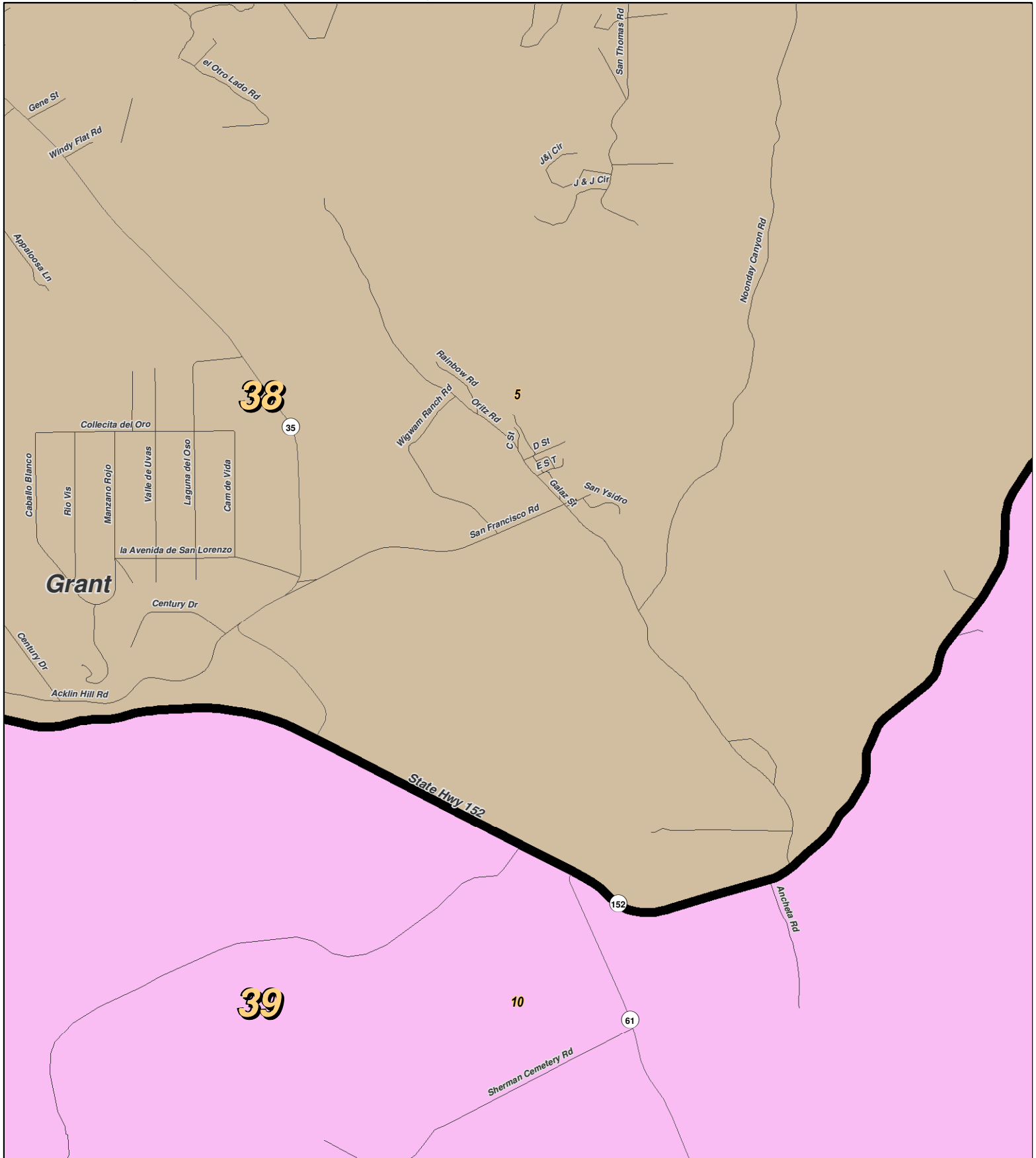
For the New Mexico
 Legislative Council Service

LEGEND Created: March 01, 2012

- Precincts
- Rivers
- Interstate
- Counties
- Lakes / Ponds
- US Highway
- State Highway



Research & Polling, Inc. distributes this map assuming no liability for any errors, omissions, or inaccuracies in the information provided regardless of the cause in reliance upon any maps.



For the New Mexico
Legislative Council Service

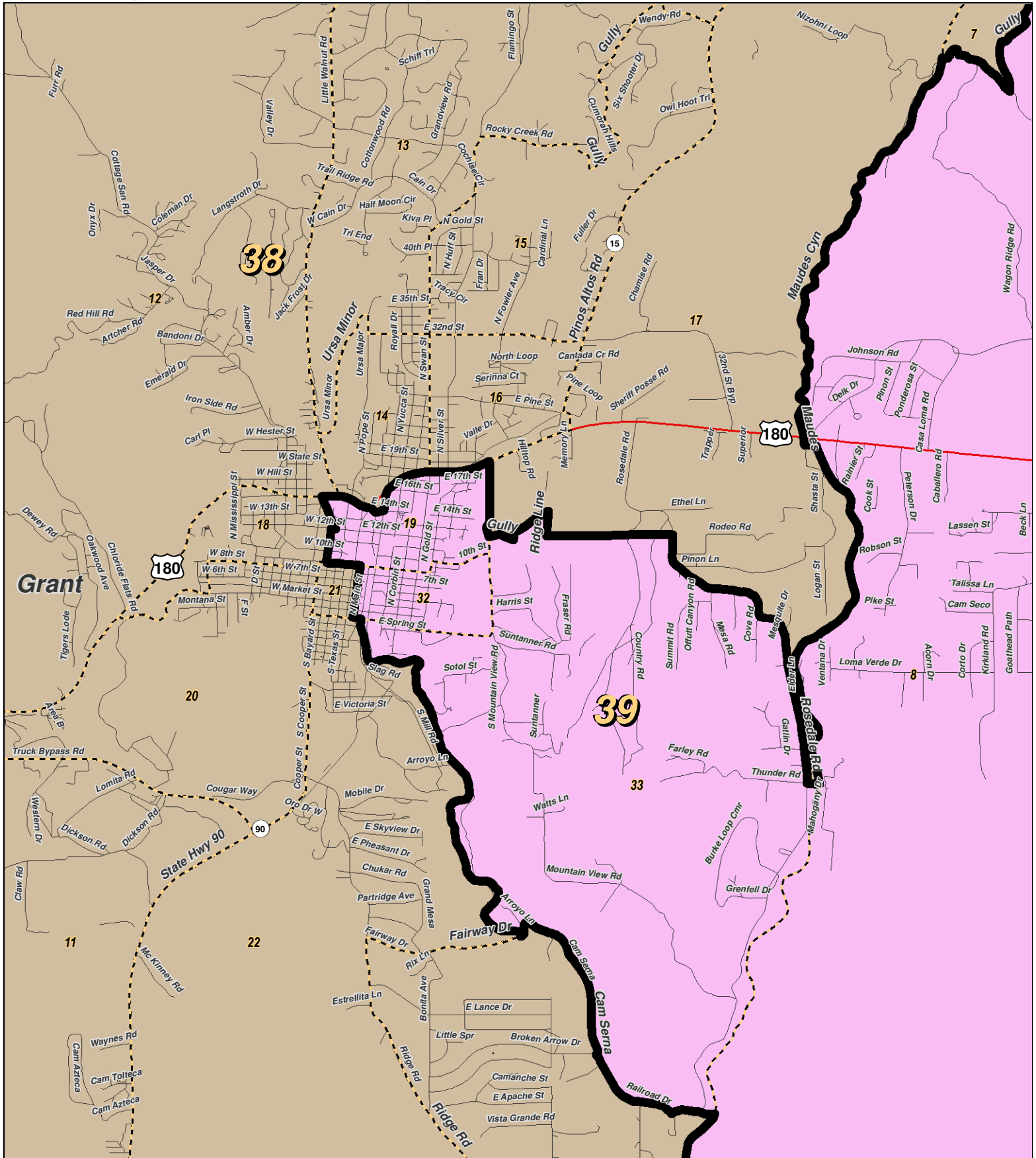
0 0.7 Miles

NEW MEXICO

LEGEND Created: March 01, 2012

Precincts	Rivers	Interstate
Counties	Lakes / Ponds	US Highway
		State Highway

Research & Polling, Inc. distributes this map assuming no liability for any errors, omissions, or inaccuracies in the information provided regardless of the cause in reliance upon any maps.



0 1 Miles

RESEARCH & POLLING INC.

For the New Mexico
Legislative Council Service

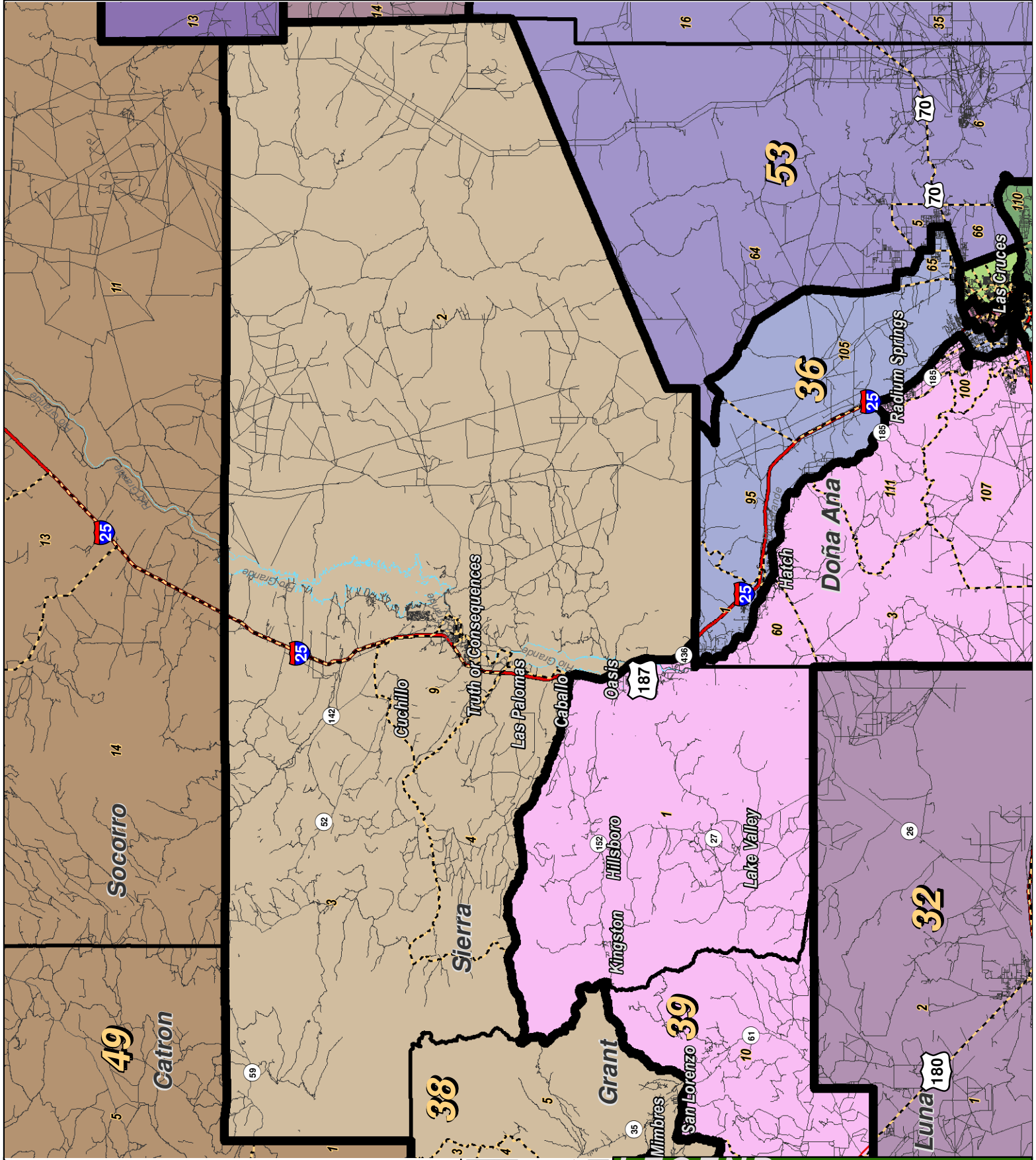
NEW MEXICO



LEGEND Created: March 01, 2012

Precincts	Rivers	Interstate
Counties	Lakes / Ponds	US Highway
		State Highway

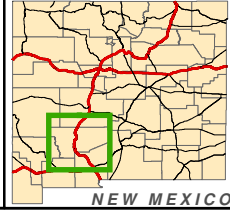
Research & Polling, Inc. distributes this map assuming no liability for any errors, omissions, or inaccuracies in the information provided regardless of the cause in reliance upon any maps.



0 5 10 15 20 Miles

RESEARCH & POLLING INC.

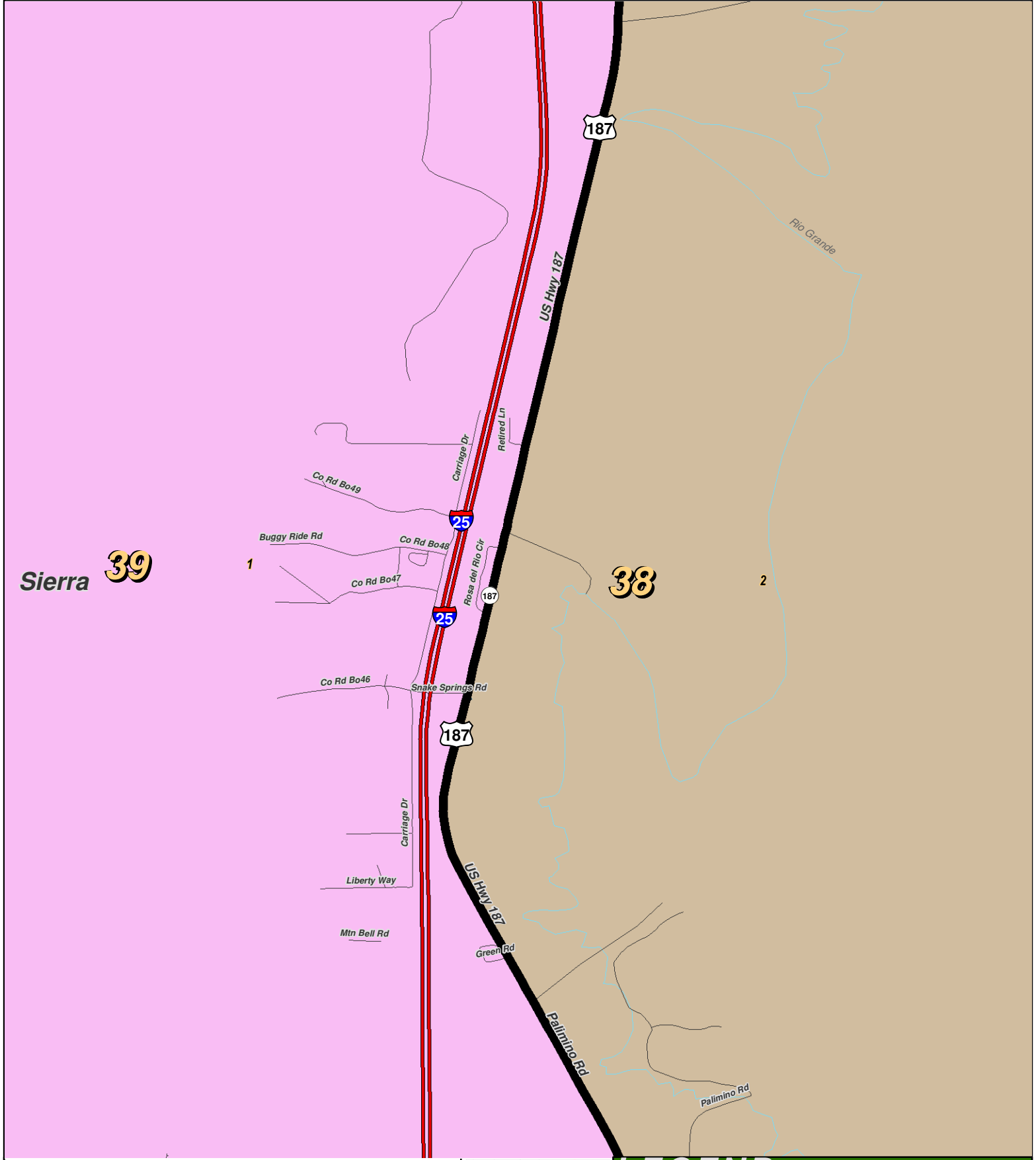
For the New Mexico Legislative Council Service



LEGEND Created: March 01, 2012

- Precincts
- Counties
- Rivers
- Lakes / Ponds
- Interstate
- US Highway
- State Highway

Research & Polling, Inc. distributes this map assuming no liability for any errors, omissions, or inaccuracies in the information provided regardless of the cause in reliance upon any maps.



0 0.5 Miles

RESEARCH & POLLING INC.

For the New Mexico Legislative Council Service



LEGEND Created: March 01, 2012

Precincts	Rivers	Interstate
Counties	Lakes / Ponds	US Highway
		State Highway

Research & Polling, Inc. distributes this map assuming no liability for any errors, omissions, or inaccuracies in the information provided regardless of the cause in reliance upon any maps.

**NM House
 HD_District_Court_1
 (Court Adopted on Remand February 2012)**

District: 39

County/ Precinct	Total Population	Adult Hispanic	Total Adult Native American	Adult Non-Hispanic		
				White	Native American	Black
DO 3	1,348	81.7%	1.5%	17.8%	0.2%	0.0%
DO 4	1,635	81.0%	1.3%	16.3%	0.1%	0.2%
DO 19	2,597	44.7%	4.6%	48.5%	2.9%	2.3%
DO 21	1,074	11.7%	0.5%	84.4%	0.2%	1.7%
DO 38	3,989	72.1%	2.9%	23.8%	1.1%	1.9%
DO 60	871	83.6%	2.2%	15.7%	0.2%	0.0%
DO 63	1,867	46.8%	1.4%	51.3%	0.6%	0.3%
DO 100	1,103	51.3%	2.8%	46.8%	0.7%	0.1%
DO 107	1,147	22.8%	1.3%	72.9%	0.5%	1.7%
DO 111	228	26.7%	0.0%	73.3%	0.0%	0.0%
DO 115	1,072	45.6%	0.8%	53.0%	0.2%	0.0%
GR 8	1,691	38.7%	2.5%	59.0%	0.5%	0.3%
GR 9	599	60.0%	2.8%	36.9%	1.4%	0.8%
GR 10	333	33.1%	2.5%	65.5%	0.4%	0.0%
GR 19	772	61.8%	2.2%	33.2%	0.9%	0.9%
GR 23	649	52.9%	4.5%	44.6%	0.9%	0.0%
GR 24	771	77.0%	2.2%	20.8%	0.5%	0.2%
GR 25	660	82.7%	3.3%	16.3%	0.0%	0.4%
GR 26	854	80.6%	2.6%	18.6%	0.3%	0.0%
GR 27	860	82.0%	7.4%	14.8%	2.7%	0.0%
GR 28	962	75.5%	3.4%	23.0%	0.3%	0.1%
GR 29	655	42.7%	2.6%	54.5%	0.8%	1.0%
GR 32	462	69.4%	2.2%	26.4%	0.6%	1.0%
GR 33	910	41.1%	2.3%	56.3%	0.4%	0.3%
GR 34	968	76.7%	6.1%	18.4%	2.4%	0.4%
SI 1	1,562	43.3%	2.5%	53.5%	0.7%	0.0%
District Totals	29,639	56.8%	2.7%	40.0%	0.9%	0.8%