

0 10 20 30 40 Miles

RESEARCH & POLLING INC.

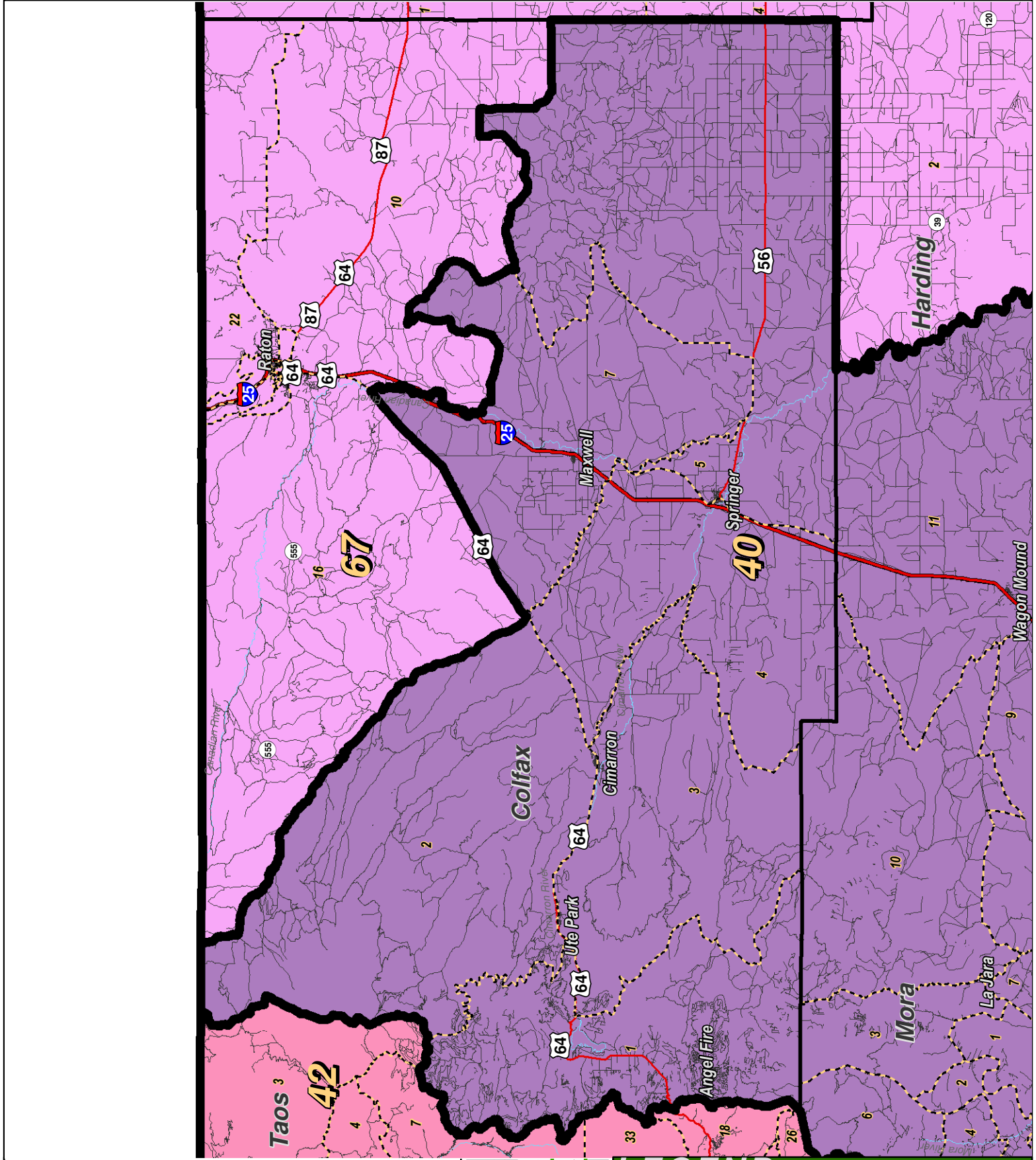
For the New Mexico Legislative Council Service



**LEGEND** Created: March 02, 2012

Precincts	Rivers	Interstate
Counties	Lakes / Ponds	US Highway
		State Highway

Research & Polling, Inc. distributes this map assuming no liability for any errors, omissions, or inaccuracies in the information provided regardless of the cause in reliance upon any maps.



0 4 8 12 16 Miles

**RESEARCH & POLLING INC.**

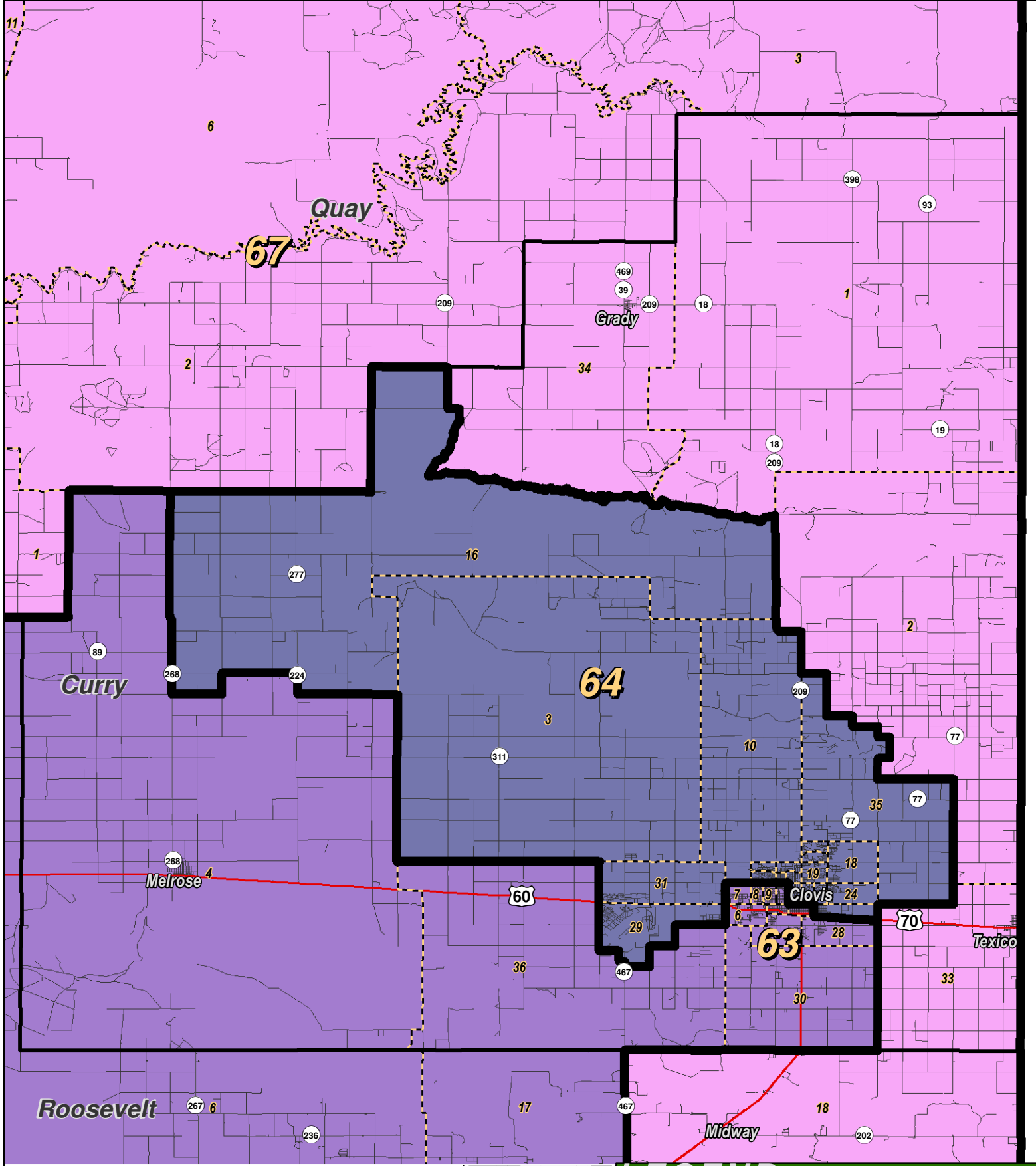
For the New Mexico Legislative Council Service



**LEGEND** Created: March 01, 2012

Precincts	Rivers	Interstate
Counties	Lakes / Ponds	US Highway
		State Highway

Research & Polling, Inc. distributes this map assuming no liability for any errors, omissions, or inaccuracies in the information provided regardless of the cause in reliance upon any maps.



0 2 4 6 8 Miles

**RESEARCH & POLLING INC.**

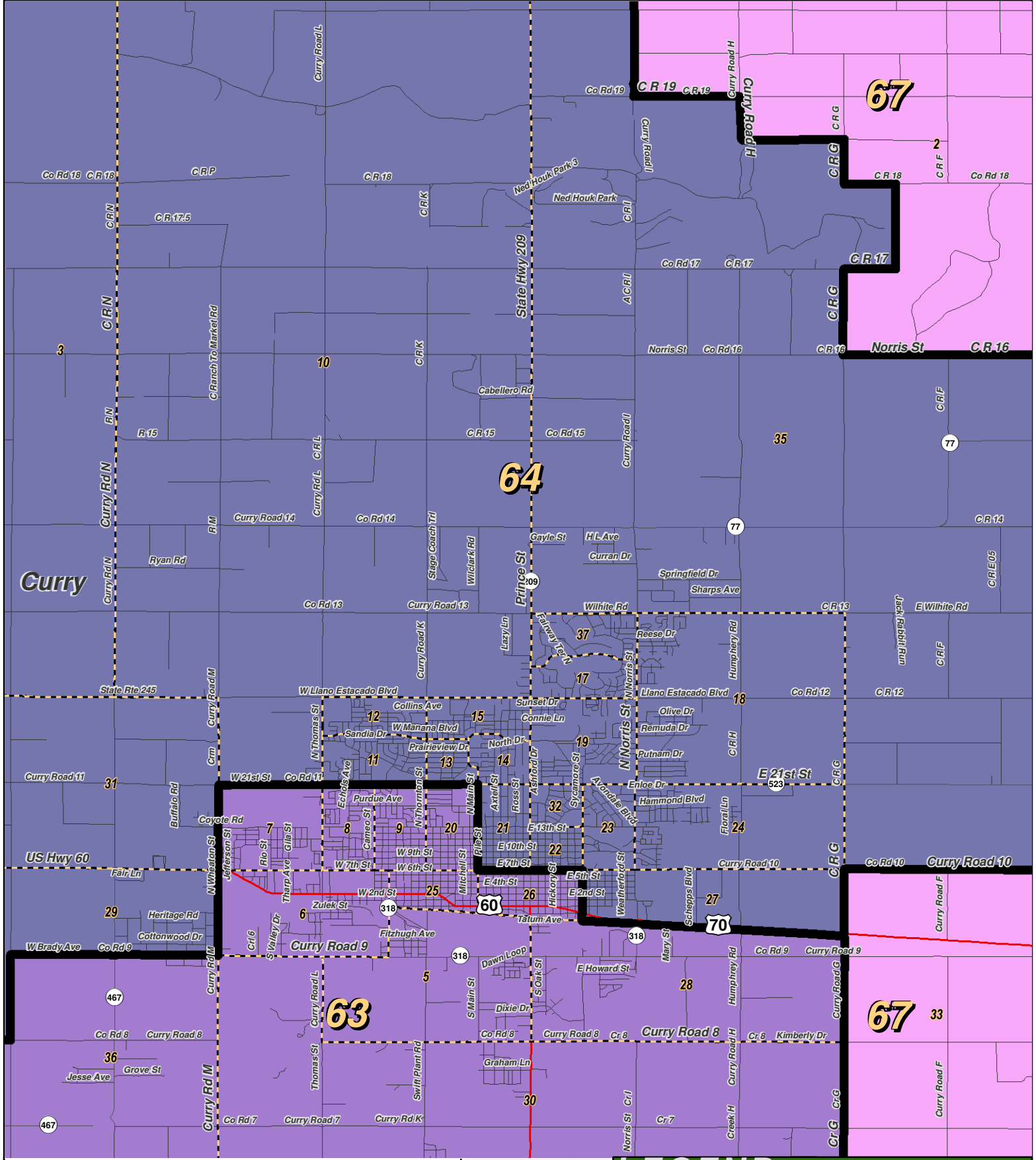
For the New Mexico Legislative Council Service



**LEGEND** Created: March 01, 2012

Precincts	Rivers	Interstate
Counties	Lakes / Ponds	US Highway
		State Highway

Research & Polling, Inc. distributes this map assuming no liability for any errors, omissions, or inaccuracies in the information provided regardless of the cause in reliance upon any maps.



0 1 2 Miles

**RESEARCH & POLLING INC.**

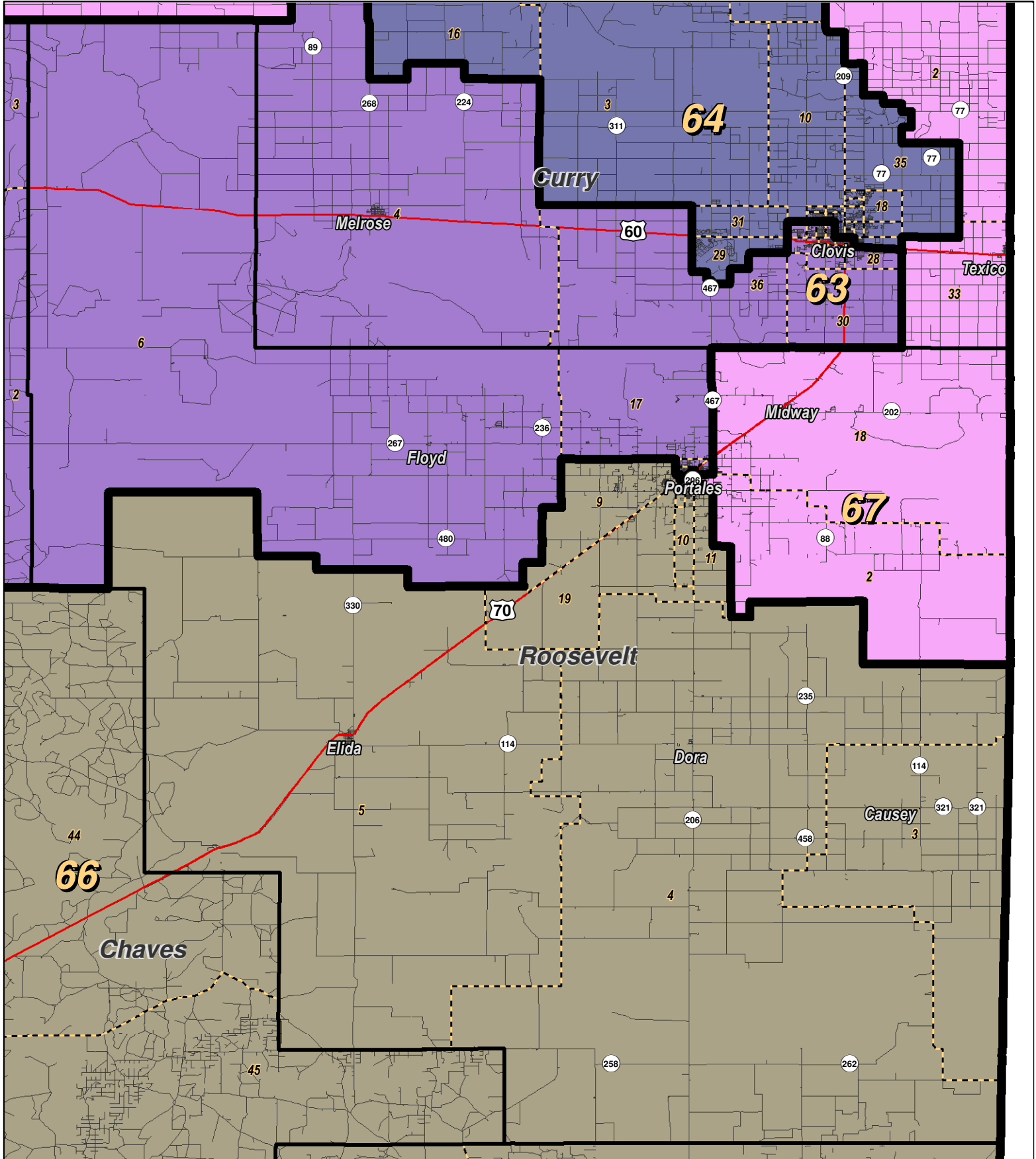
For the New Mexico Legislative Council Service



**LEGEND** Created: March 01, 2012

- Precincts
- Rivers
- Interstate
- Counties
- Lakes / Ponds
- US Highway
- State Highway

Research & Polling, Inc. distributes this map assuming no liability for any errors, omissions, or inaccuracies in the information provided regardless of the cause in reliance upon any maps.



0 3 6 9 12 Miles

**RESEARCH & POLLING INC.**

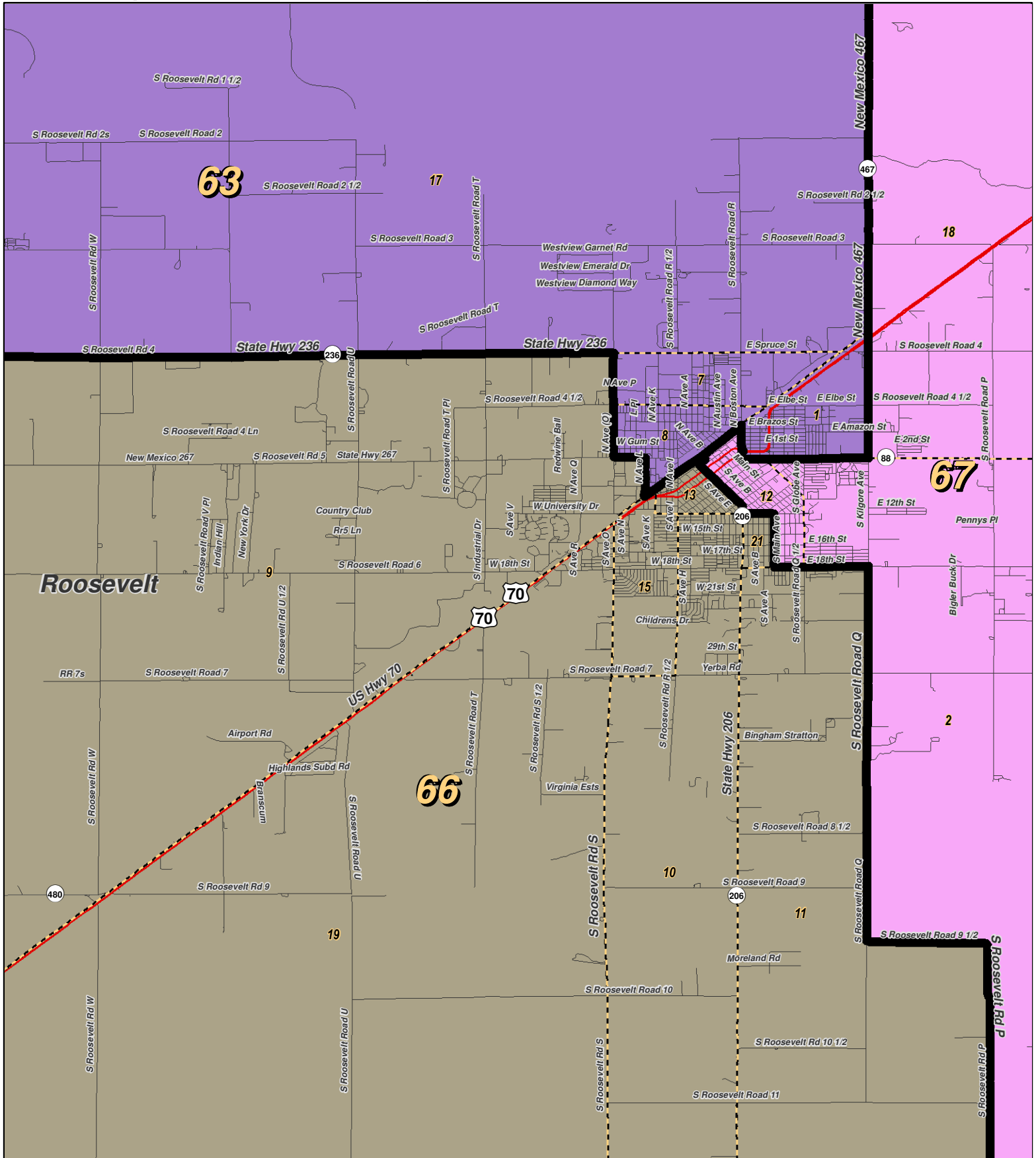
For the New Mexico Legislative Council Service



**LEGEND** Created: March 01, 2012

- Precincts
- Rivers
- Lakes / Ponds
- Counties
- Interstate
- US Highway
- State Highway

Research & Polling, Inc. distributes this map assuming no liability for any errors, omissions, or inaccuracies in the information provided regardless of the cause in reliance upon any maps.



0 1 2 Miles

**RESEARCH & POLLING INC.**

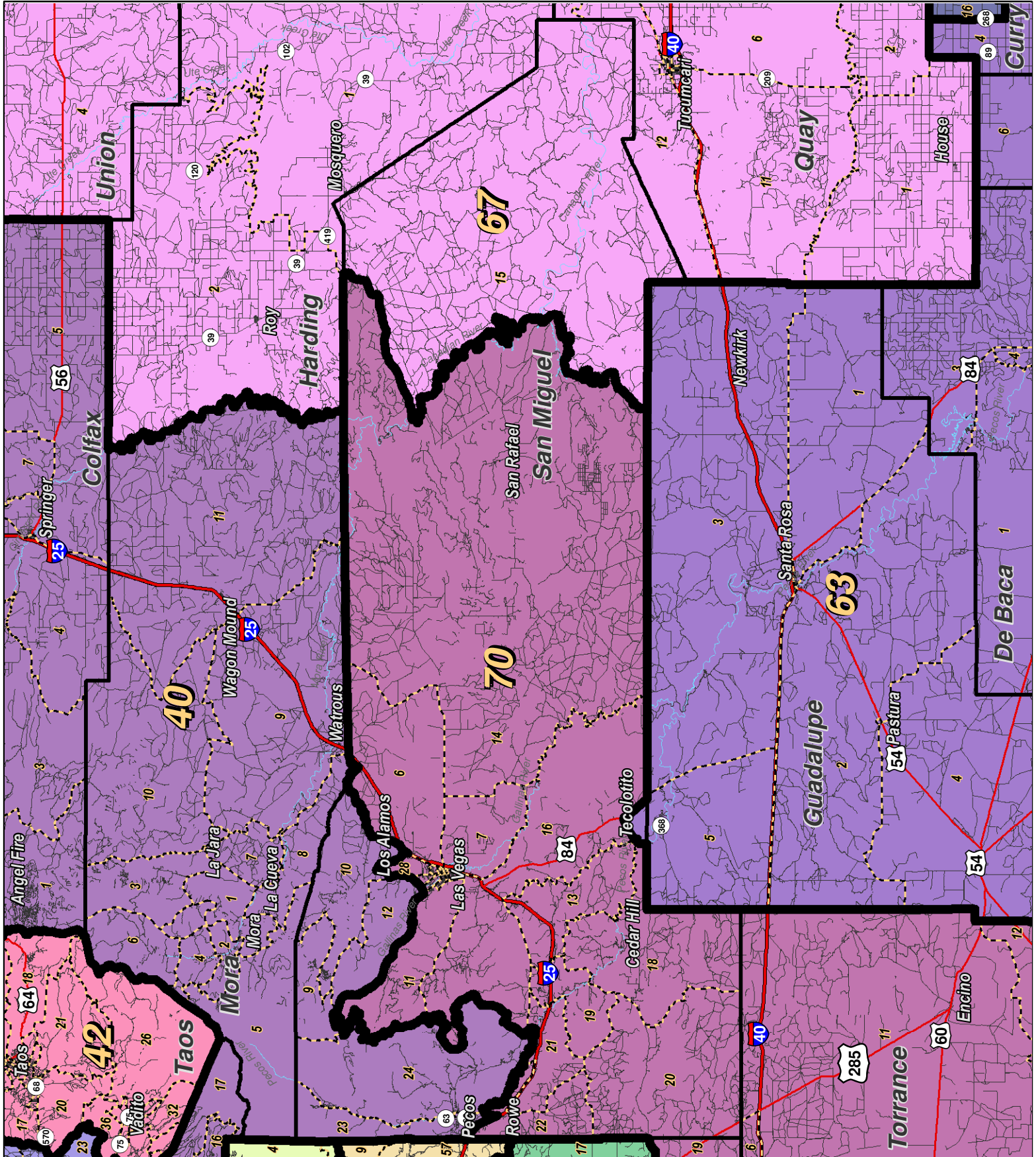
For the New Mexico Legislative Council Service



**LEGEND** Created: March 01, 2012

- Precincts
- Rivers
- Interstate
- Counties
- Lakes / Ponds
- US Highway
- State Highway

Research & Polling, Inc. distributes this map assuming no liability for any errors, omissions, or inaccuracies in the information provided regardless of the cause in reliance upon any maps.



0 7 14 21 28 Miles

**RESEARCH & POLLING INC.**

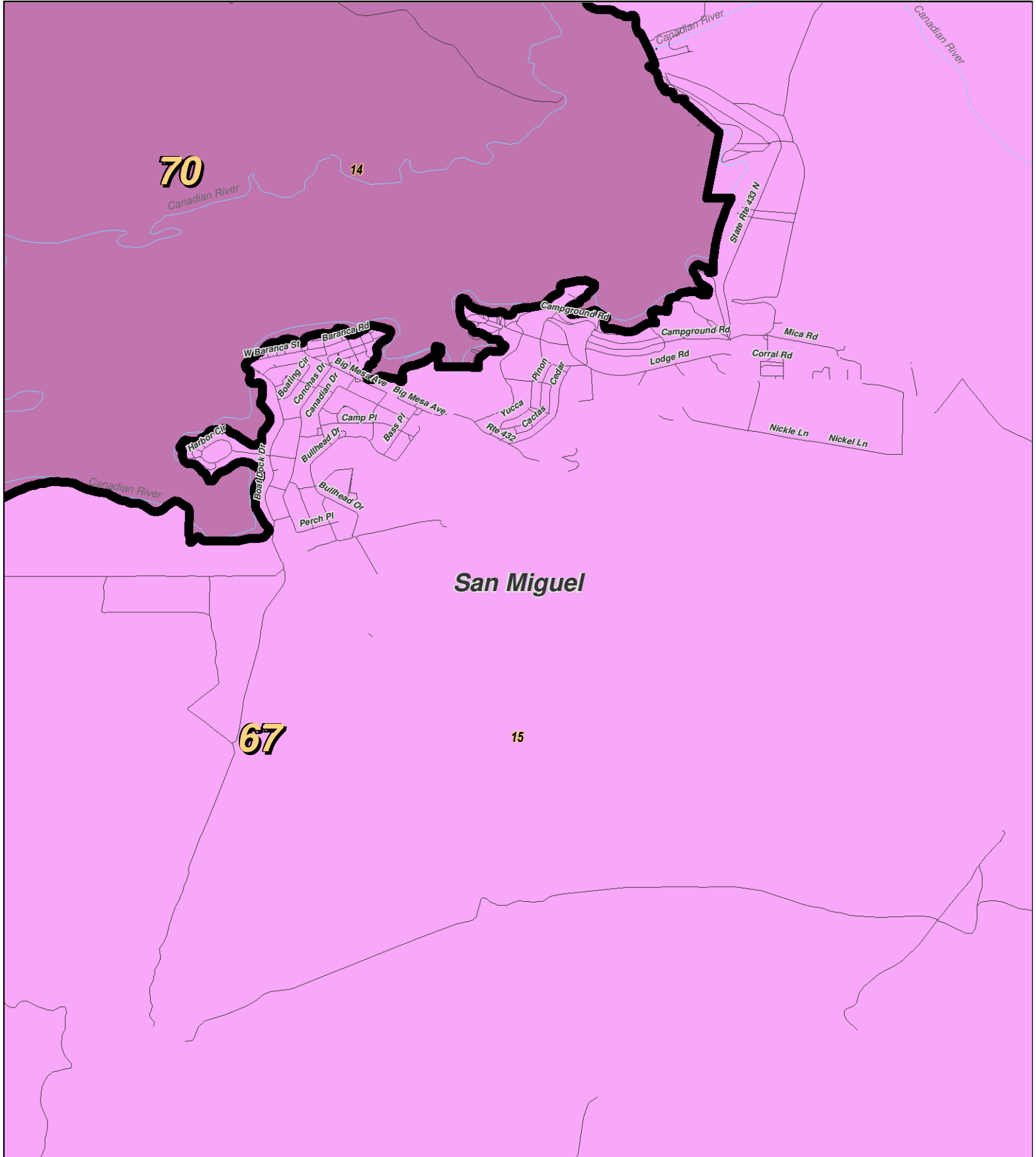
For the New Mexico Legislative Council Service



**LEGEND** Created: March 01, 2012

- Precincts
- Counties
- Rivers
- Lakes / Ponds
- Interstate
- US Highway
- State Highway

Research & Polling, Inc. distributes this map assuming no liability for any errors, omissions, or inaccuracies in the information provided regardless of the cause in reliance upon any maps.



0 1 Miles

**RESEARCH & POLLING INC.**

For the New Mexico Legislative Council Service



**LEGEND** Created: March 01, 2012

Precincts	Rivers	Interstate
Counties	Lakes / Ponds	US Highway
		State Highway

Research & Polling, Inc. distributes this map assuming no liability for any errors, omissions, or inaccuracies in the information provided regardless of the cause in reliance upon any maps.



**NM House  
 HD\_District\_Court\_1  
 (Court Adopted on Remand February 2012)**

**District: 67**

				Adult Non-Hispanic		
County/ Precinct	Total Population	Adult Hispanic	Total Adult Native American	White	Native American	Black
CO 10	289	18.6%	3.1%	79.6%	0.4%	0.0%
CO 11	392	46.8%	5.2%	49.0%	2.9%	0.3%
CO 12	479	51.7%	2.3%	45.1%	0.3%	0.3%
CO 13	212	33.5%	3.6%	62.3%	0.6%	0.0%
CO 14	411	38.9%	2.1%	59.3%	0.6%	0.0%
CO 15	584	28.5%	3.3%	69.2%	0.6%	0.0%
CO 16	1,669	49.4%	2.5%	48.5%	0.8%	0.2%
CO 17	764	70.6%	2.2%	28.0%	0.2%	0.3%
CO 18	194	68.6%	2.9%	29.1%	0.0%	1.2%
CO 19	433	79.9%	2.2%	15.3%	1.3%	0.3%
CO 20	843	68.7%	3.7%	28.4%	1.0%	0.8%
CO 21	981	50.7%	2.5%	47.7%	0.3%	0.1%
CO 22	779	29.0%	2.2%	69.0%	0.5%	0.0%
CU 1	206	9.8%	2.5%	85.3%	1.2%	0.6%
CU 2	327	19.2%	0.0%	78.2%	0.0%	0.0%
CU 33	1,550	47.0%	1.7%	49.0%	0.5%	2.9%
CU 34	177	9.6%	2.2%	86.7%	1.5%	0.0%
HA 1	306	36.9%	1.9%	63.1%	0.0%	0.0%
HA 2	389	45.9%	1.8%	52.9%	0.3%	0.6%
QU 1	227	8.1%	1.1%	90.8%	0.5%	0.0%
QU 2	141	10.6%	1.0%	88.5%	1.0%	0.0%
QU 3	451	18.7%	4.2%	76.5%	1.7%	0.0%
QU 4	157	6.5%	0.8%	90.2%	0.8%	0.8%
QU 5	1,114	16.8%	1.9%	81.3%	0.6%	0.3%
QU 6	689	17.7%	1.4%	80.5%	0.4%	0.0%
QU 7	1,409	66.5%	3.1%	30.3%	1.4%	1.3%
QU 8	646	44.6%	2.4%	50.6%	1.0%	1.2%
QU 9	1,447	42.6%	2.4%	52.4%	0.5%	1.3%
QU 10	739	74.3%	2.5%	21.3%	0.7%	1.5%
QU 11	1,290	36.7%	1.6%	58.4%	0.5%	1.1%
QU 12	731	30.7%	2.2%	66.6%	0.9%	0.5%
RO 2	1,891	23.4%	2.2%	71.4%	0.8%	1.7%

**NM House  
 HD\_District\_Court\_1  
 (Court Adopted on Remand February 2012)**

**District: 67**

				<b>Adult Non-Hispanic</b>		
<b>County/ Precinct</b>	<b>Total Population</b>	<b>Adult Hispanic</b>	<b>Total Adult Native American</b>	<b>White</b>	<b>Native American</b>	<b>Black</b>
RO 12	1,483	32.8%	3.2%	62.2%	1.1%	1.7%
RO 18	1,089	28.0%	1.3%	70.2%	0.1%	0.5%
SM 15	253	22.5%	1.3%	75.8%	0.0%	0.4%
UN 1	546	22.4%	2.3%	75.5%	0.5%	0.0%
UN 4	1,097	32.3%	0.8%	66.2%	0.0%	0.4%
UN 6	1,675	49.4%	4.1%	41.9%	2.6%	4.6%
UN 7	800	45.3%	4.1%	52.0%	1.0%	0.2%
UN 8	300	8.1%	3.4%	88.1%	0.4%	0.0%
UN 9	131	16.2%	4.8%	79.0%	0.0%	0.0%
<b>District Totals</b>	<b>29,291</b>	<b>39.7%</b>	<b>2.5%</b>	<b>56.8%</b>	<b>0.8%</b>	<b>1.0%</b>