

0 7 14 21 28 Miles

RESEARCH & POLLING INC.

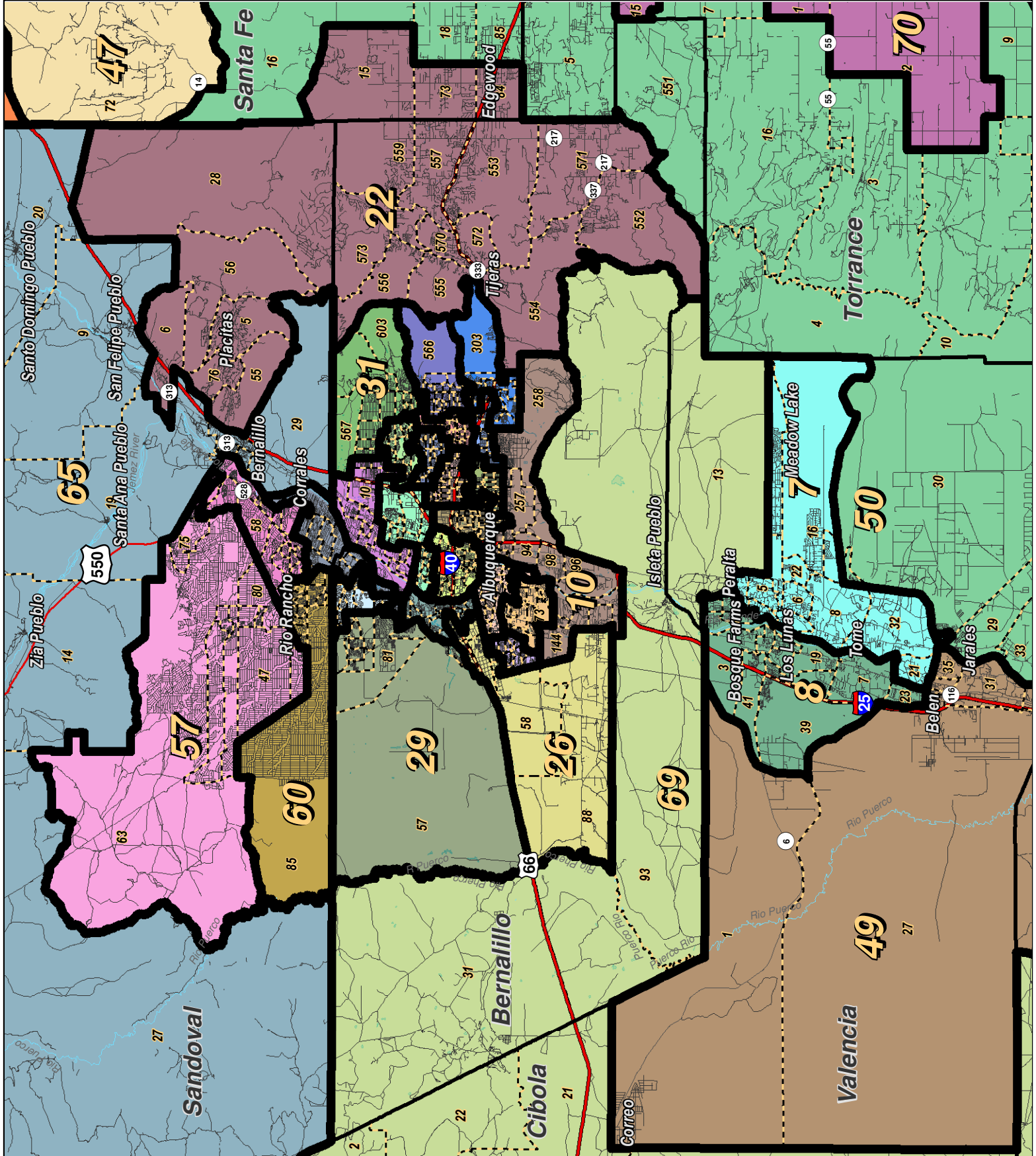
For the New Mexico Legislative Council Service



**LEGEND** Created: March 02, 2012

Precincts	Rivers	Interstate
Counties	Lakes / Ponds	US Highway
		State Highway

Research & Polling, Inc. distributes this map assuming no liability for any errors, omissions, or inaccuracies in the information provided regardless of the cause in reliance upon any maps.



0 3 6 9 12 Miles

RESEARCH & POLLING INC.

For the New Mexico Legislative Council Service

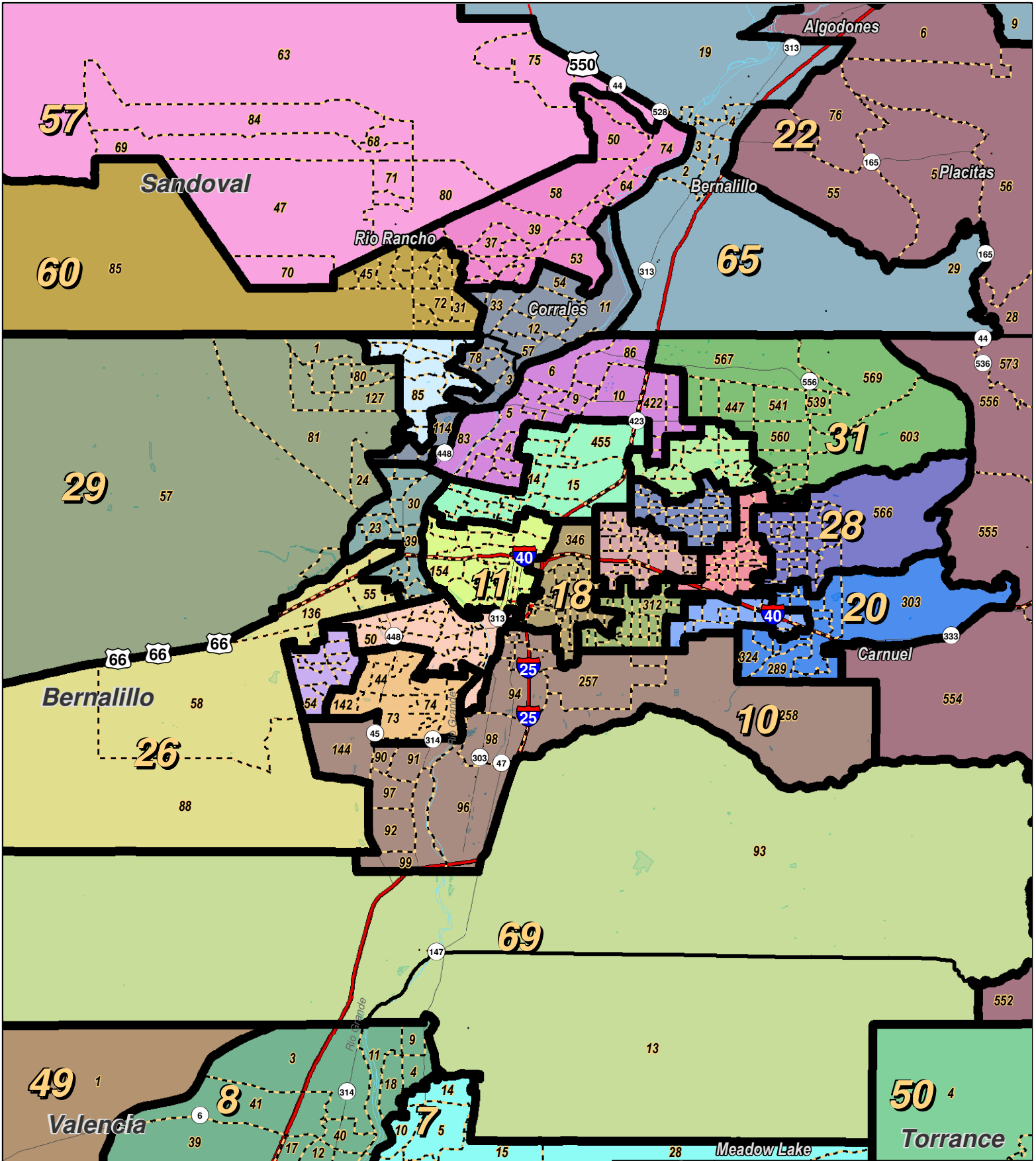
NEW MEXICO



**LEGEND** Created: March 01, 2012

- Precincts
- Counties
- Rivers
- Lakes / Ponds
- Interstate
- US Highway
- State Highway

Research & Polling, Inc. distributes this map assuming no liability for any errors, omissions, or inaccuracies in the information provided regardless of the cause in reliance upon any maps.



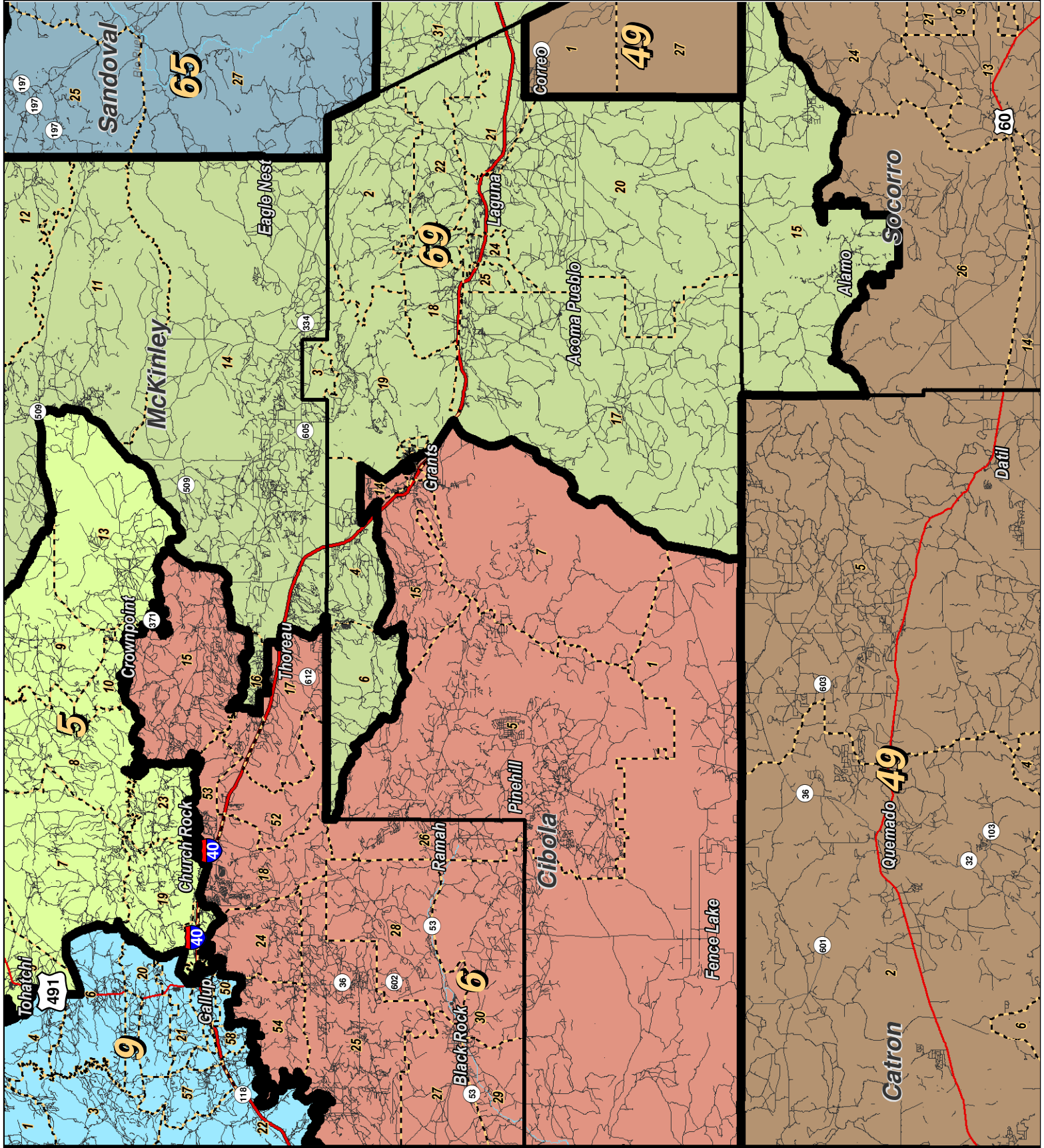
0 1 2 3 4  
 Miles



**LEGEND** Created: March 01, 2012

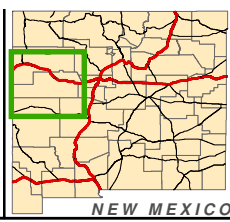
- Precincts
- Rivers
- Interstate
- Counties
- Lakes / Ponds
- US Highway
- State Highway

Research & Polling, Inc. distributes this map assuming no liability for any errors, omissions, or inaccuracies in the information provided regardless of the cause in reliance upon any maps.



For the New Mexico  
 Legislative Council Service

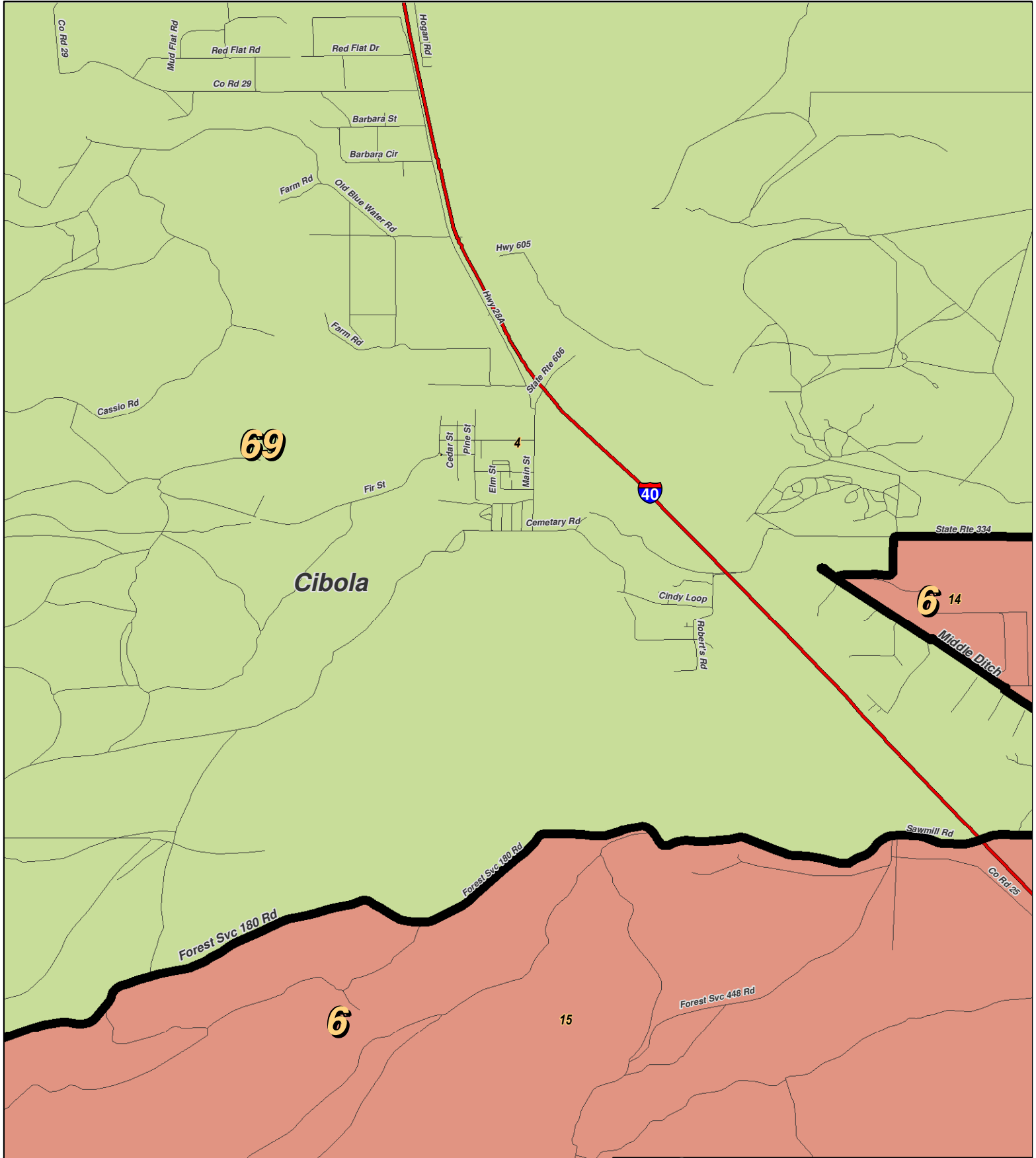
0 6 12 18 24 Miles



**LEGEND** Created: March 01, 2012

Precincts	Rivers	Interstate
Counties	Lakes / Ponds	US Highway
		State Highway

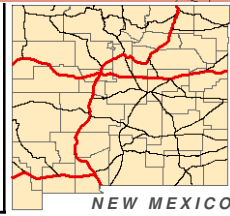
Research & Polling, Inc. distributes this map assuming no liability for any errors, omissions, or inaccuracies in the information provided regardless of the cause in reliance upon any maps.



0 1 Miles

RESEARCH & POLLING INC.

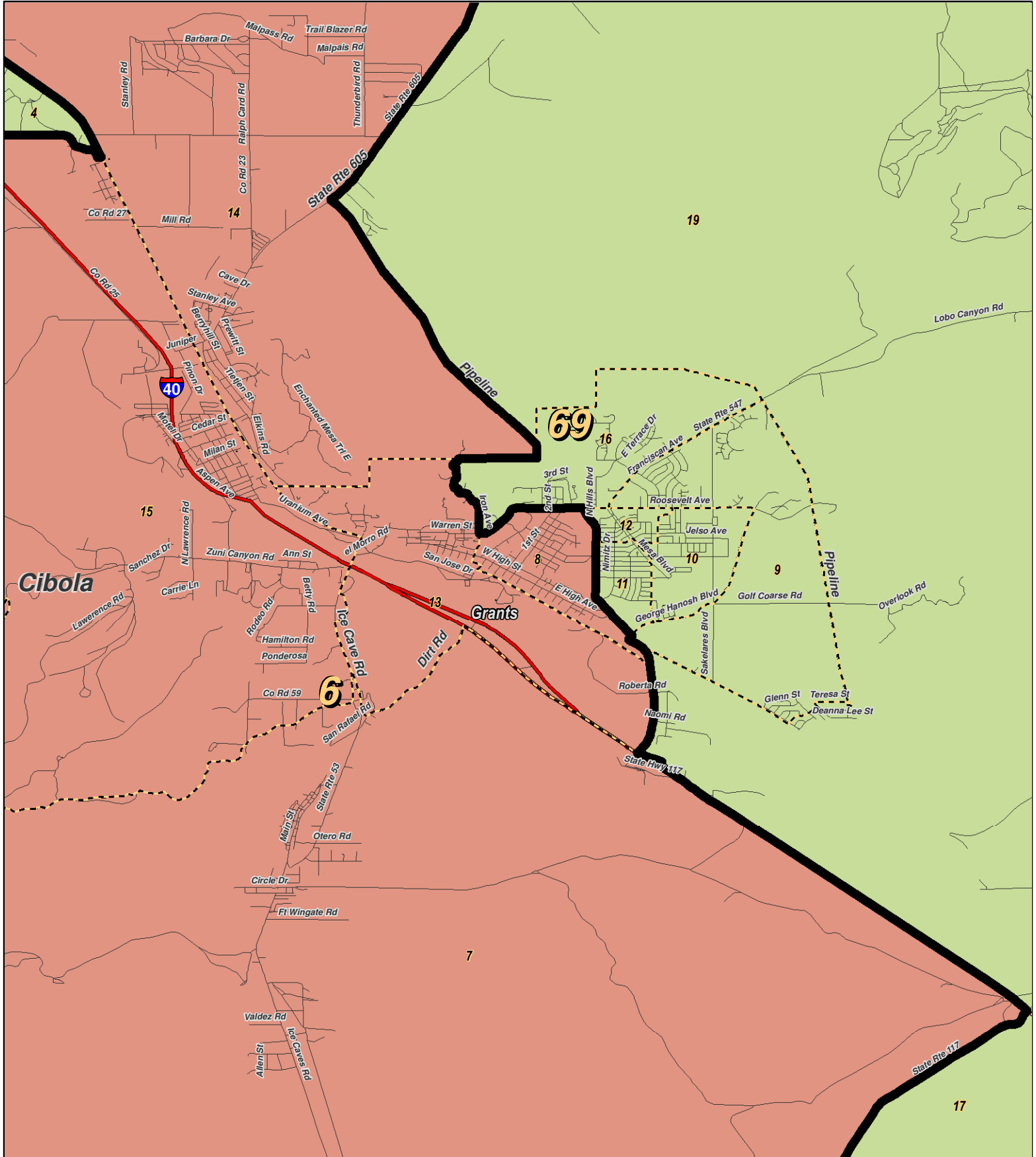
For the New Mexico Legislative Council Service



**LEGEND** Created: March 01, 2012

Precincts	Rivers	Interstate
Counties	Lakes / Ponds	US Highway
		State Highway

Research & Polling, Inc. distributes this map assuming no liability for any errors, omissions, or inaccuracies in the information provided regardless of the cause in reliance upon any maps.



**RESEARCH & POLLING**  
INC.

For the New Mexico  
Legislative Council Service

0 1 2 Miles

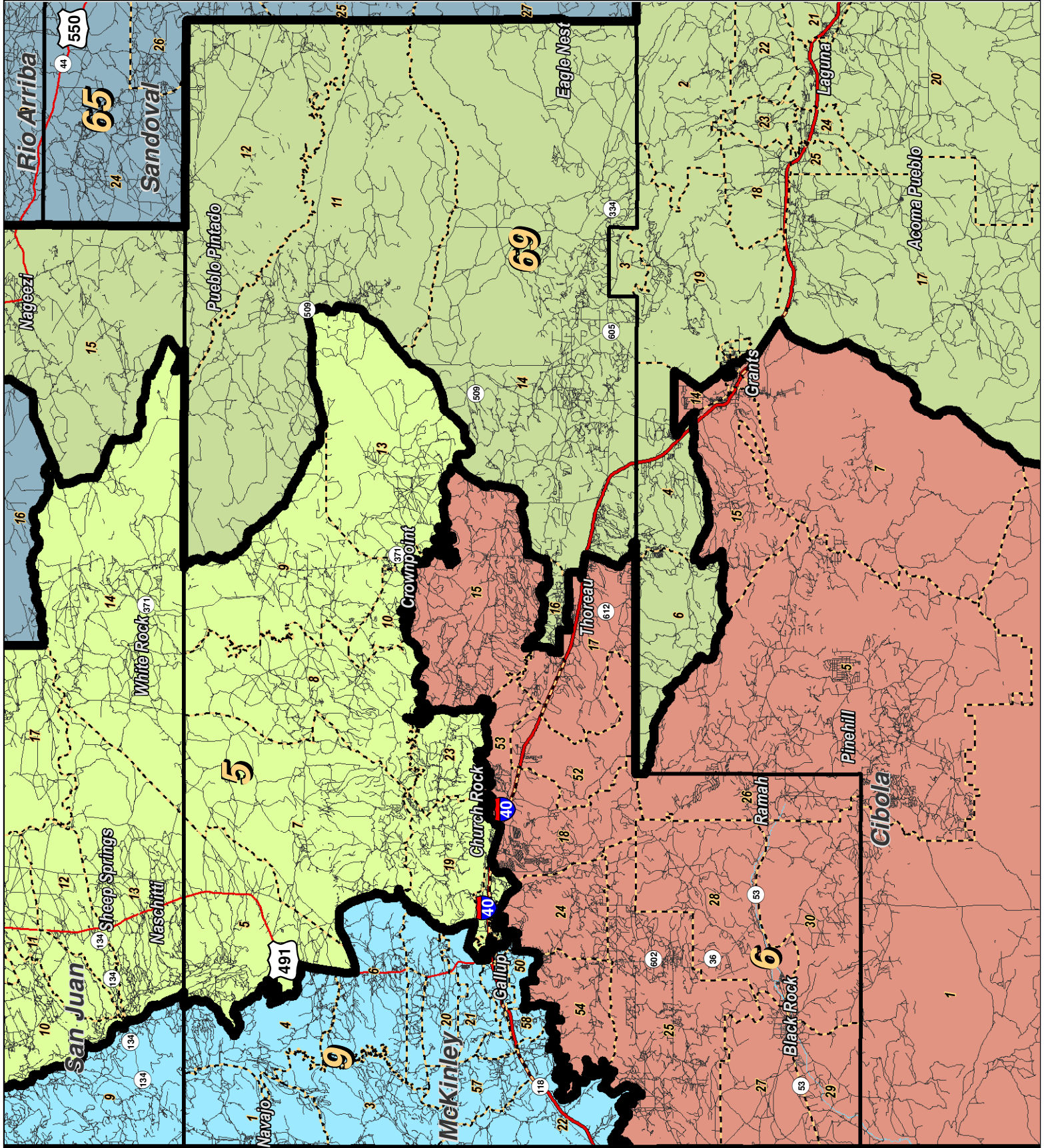
NEW MEXICO



**LEGEND** Created: March 01, 2012

Precincts	Rivers	Interstate
Counties	Lakes / Ponds	US Highway
		State Highway

Research & Polling, Inc. distributes this map assuming no liability for any errors, omissions, or inaccuracies in the information provided regardless of the cause in reliance upon any maps.



For the New Mexico  
Legislative Council Service

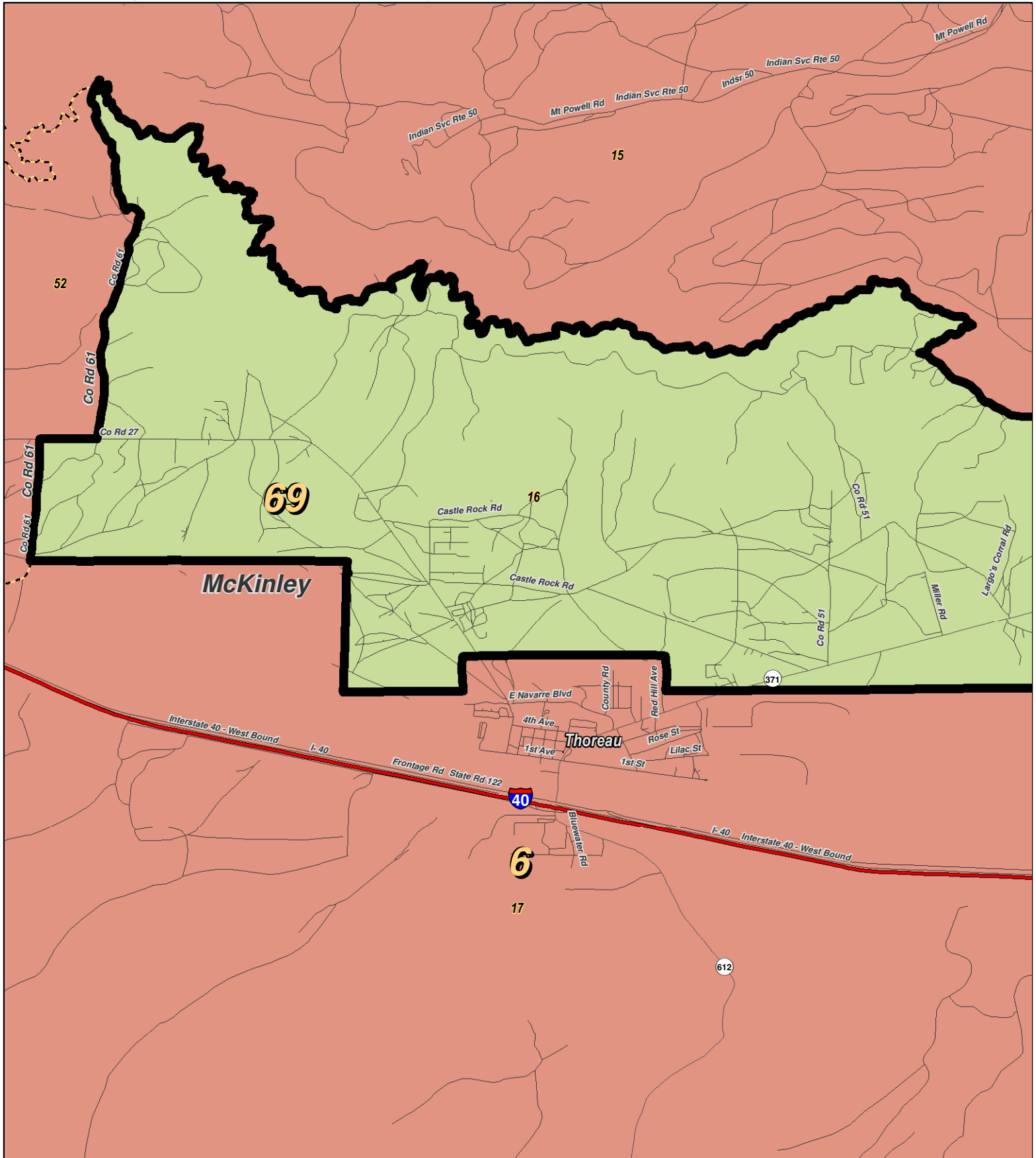
Miles

NEW MEXICO

**LEGEND** Created: March 01, 2012

Precincts	Rivers	Interstate
Counties	Lakes / Ponds	US Highway
		State Highway

Research & Polling, Inc. distributes this map assuming no liability for any errors, omissions, or inaccuracies in the information provided regardless of the cause in reliance upon any maps.



For the New Mexico  
Legislative Council Service

0 1 Miles

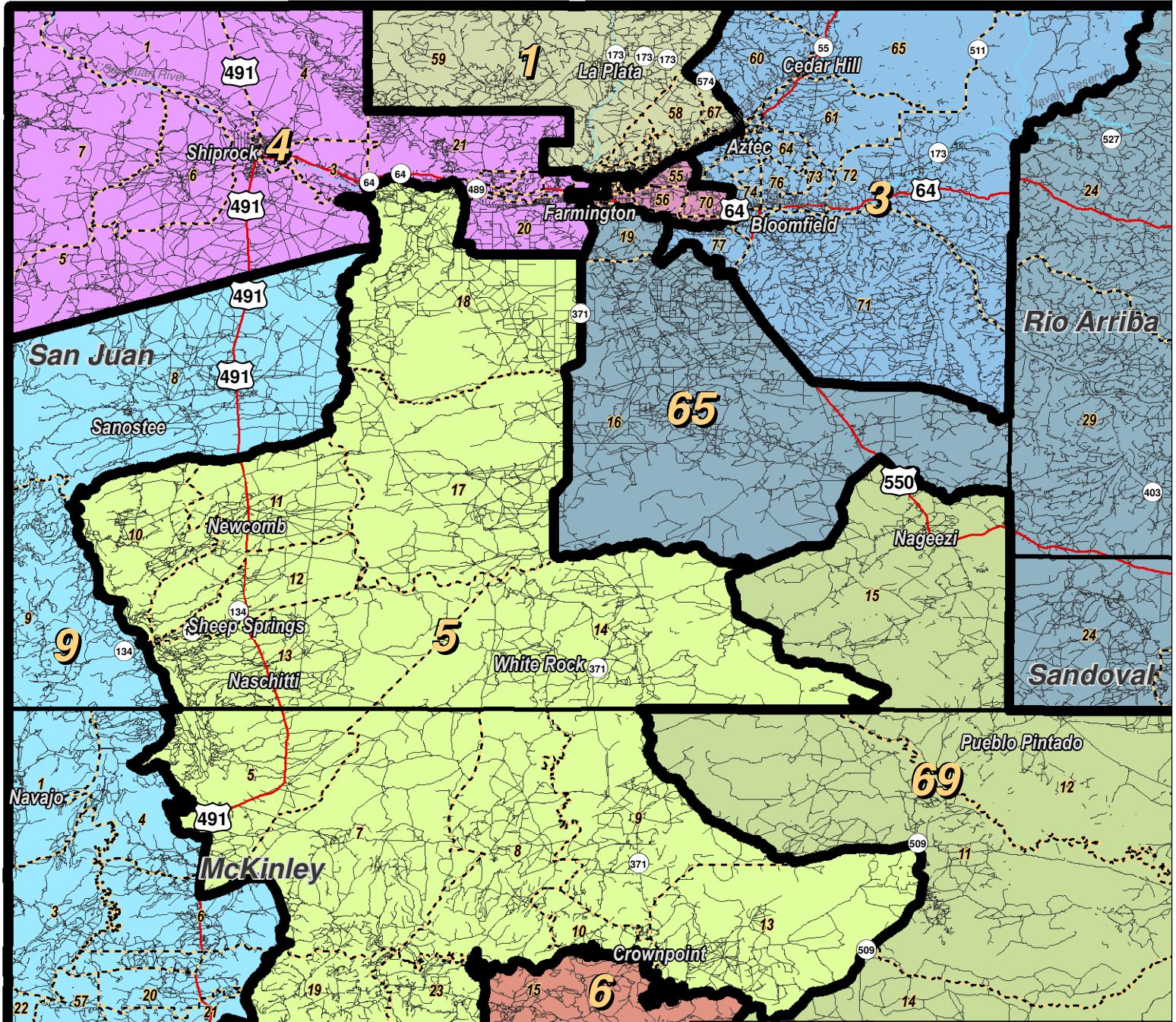
NEW MEXICO

**LEGEND** Created: March 01, 2012

Precincts	Rivers	Interstate
Counties	Lakes / Ponds	US Highway
		State Highway

Research & Polling, Inc. distributes this map assuming no liability for any errors, omissions, or inaccuracies in the information provided regardless of the cause in reliance upon any maps.





**LEGEND**

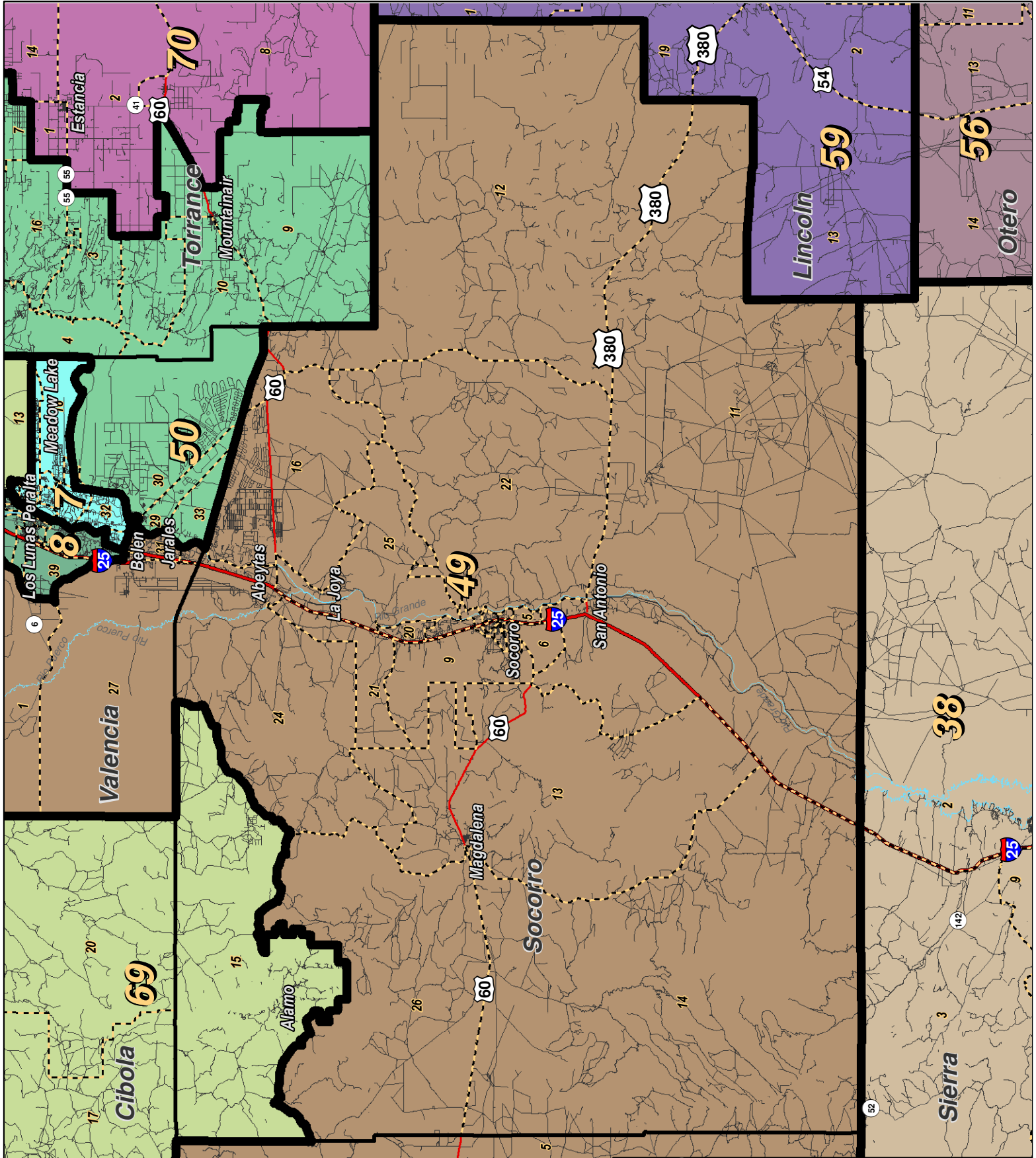
Created: March 01, 2012

- Precincts
- Rivers
- Counties
- Lakes / Ponds
- Interstate
- US Highway
- State Highway



For the New Mexico  
 Legislative Council Service

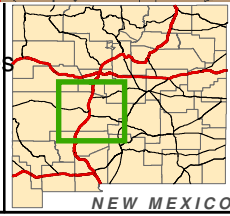
Research & Polling, Inc. distributes this map assuming no liability for any errors, omissions, or inaccuracies in the information provided regardless of the cause in reliance upon any maps.



0 6 12 18 24 Miles

**RESEARCH & POLLING INC.**

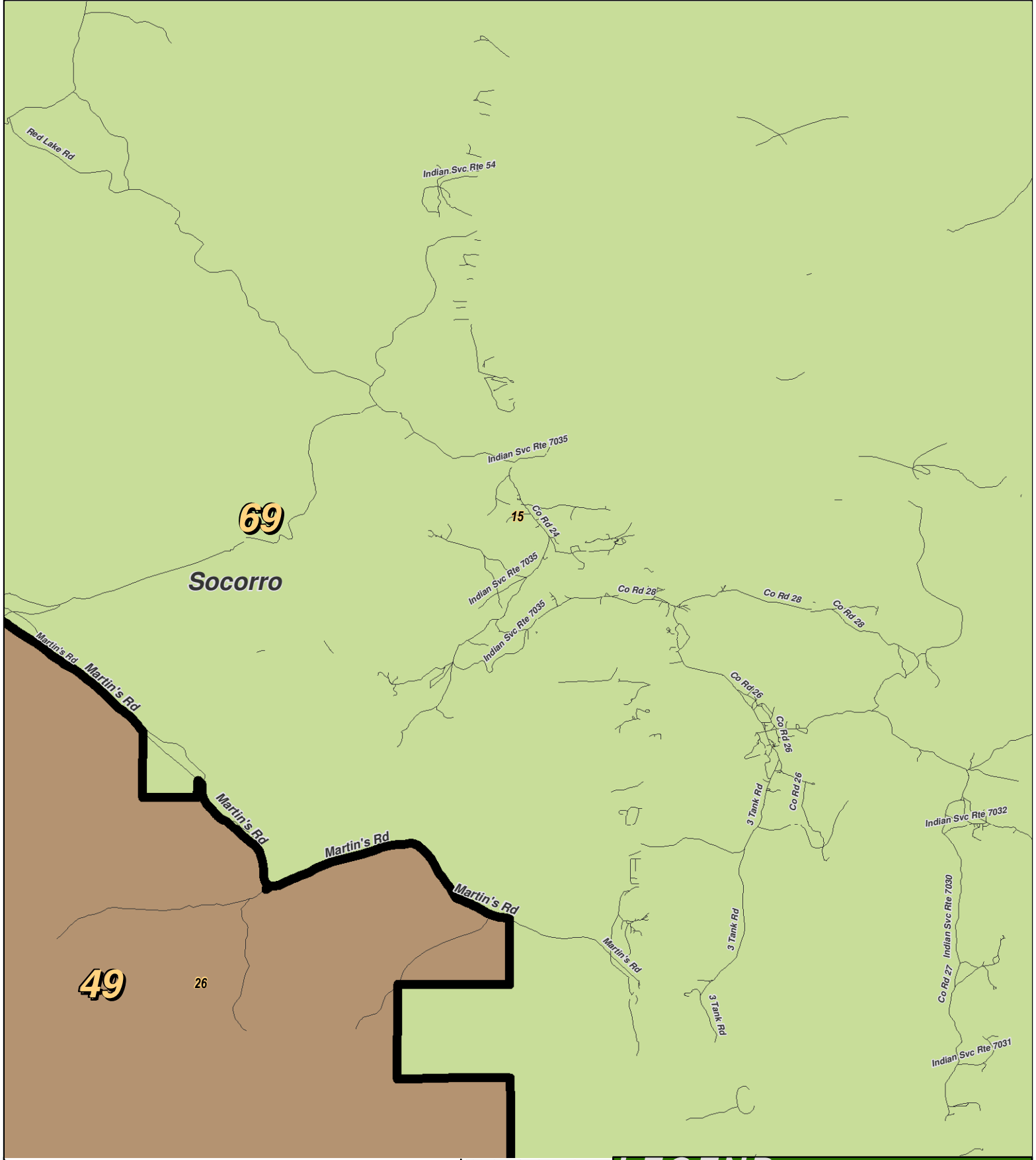
For the New Mexico Legislative Council Service



**LEGEND** Created: March 01, 2012

Precincts	Rivers	Interstate
Counties	Lakes / Ponds	US Highway
		State Highway

Research & Polling, Inc. distributes this map assuming no liability for any errors, omissions, or inaccuracies in the information provided regardless of the cause in reliance upon any maps.



0 1 2 Miles

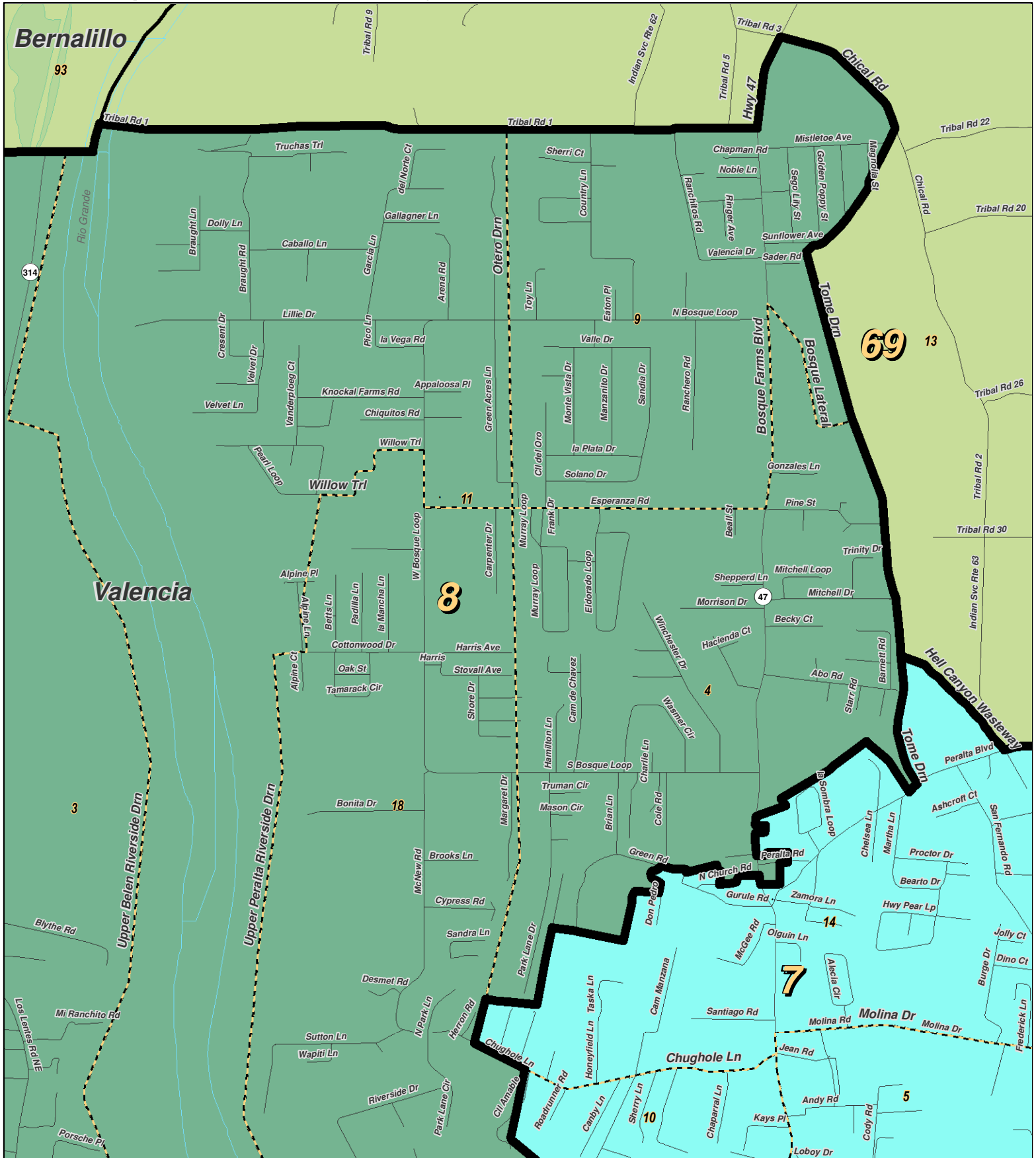
For the New Mexico  
 Legislative Council Service



**LEGEND** Created: March 01, 2012

Precincts	Rivers	Interstate
Counties	Lakes / Ponds	US Highway
		State Highway

Research & Polling, Inc. distributes this map assuming no liability for any errors, omissions, or inaccuracies in the information provided regardless of the cause in reliance upon any maps.



0 0.6 Miles

**RESEARCH & POLLING INC.**

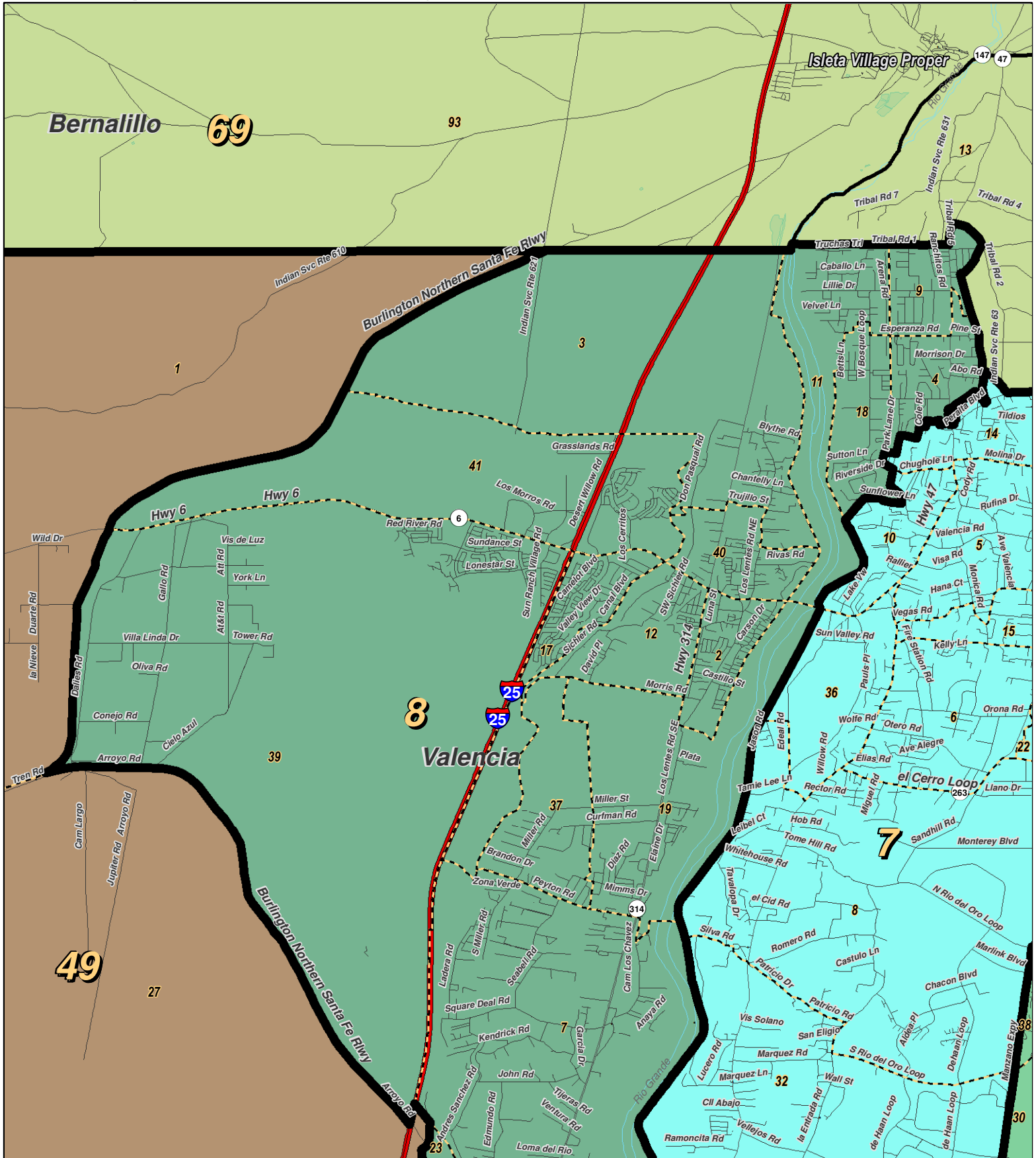
For the New Mexico Legislative Council Service



**LEGEND** Created: March 01, 2012

Precincts	Rivers	Interstate
Counties	Lakes / Ponds	US Highway
		State Highway

Research & Polling, Inc. distributes this map assuming no liability for any errors, omissions, or inaccuracies in the information provided regardless of the cause in reliance upon any maps.



0 1 2 Miles

**RESEARCH & POLLING INC.**

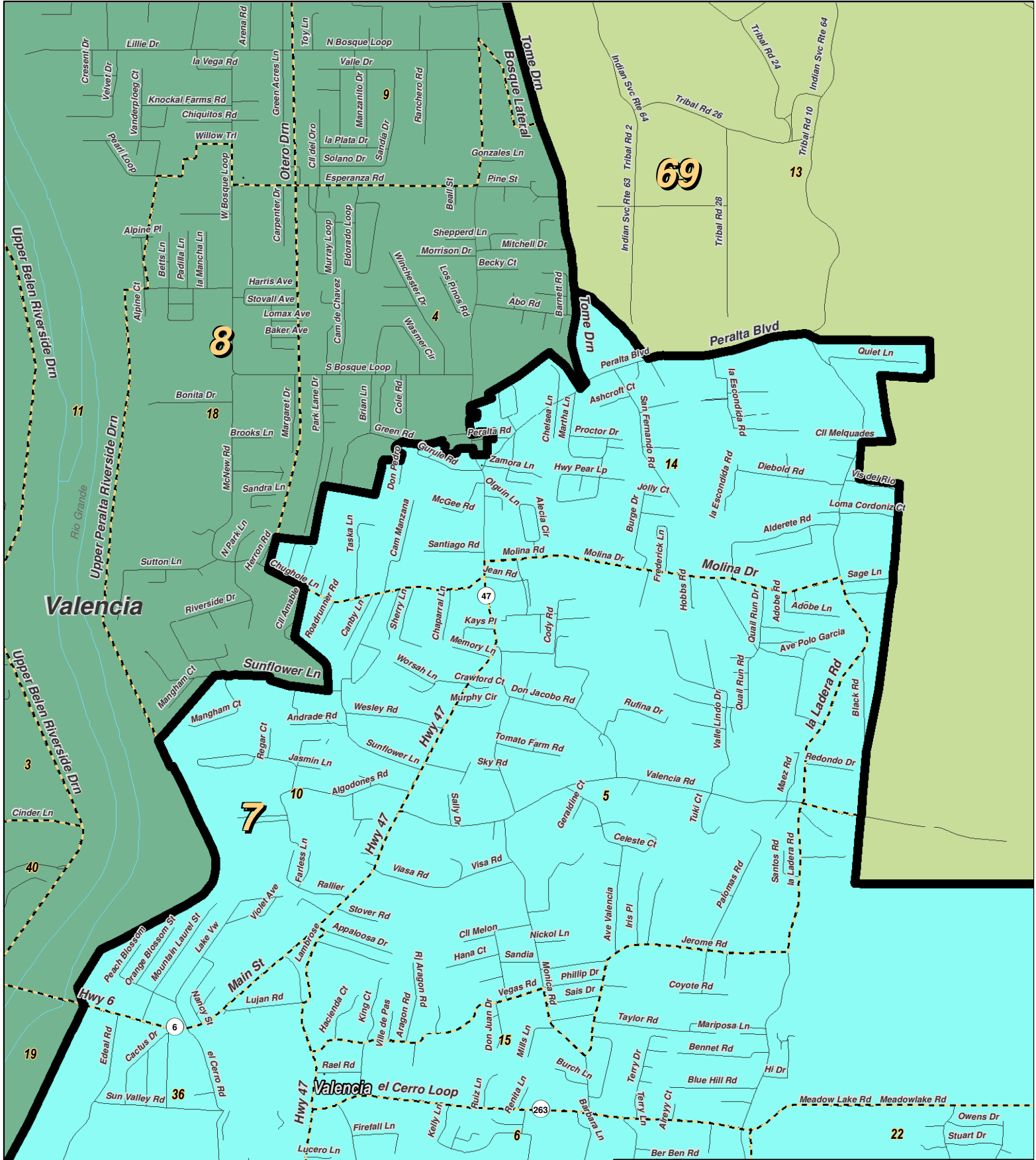
For the New Mexico Legislative Council Service



**LEGEND** Created: March 01, 2012

- Precincts
- Rivers
- Interstate
- Counties
- Lakes / Ponds
- US Highway
- State Highway

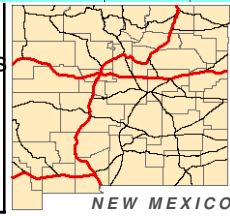
Research & Polling, Inc. distributes this map assuming no liability for any errors, omissions, or inaccuracies in the information provided regardless of the cause in reliance upon any maps.



0 0.9 Miles

**RESEARCH & POLLING INC.**

For the New Mexico Legislative Council Service



**LEGEND** Created: March 01, 2012

- Precincts
- Rivers
- Interstate
- Counties
- Lakes / Ponds
- US Highway
- State Highway

Research & Polling, Inc. distributes this map assuming no liability for any errors, omissions, or inaccuracies in the information provided regardless of the cause in reliance upon any maps.

**NM House  
 HD\_District\_Court\_1  
 (Court Adopted on Remand February 2012)**

**District: 69**

				<b>Adult Non-Hispanic</b>		
<b>County/ Precinct</b>	<b>Total Population</b>	<b>Adult Hispanic</b>	<b>Total Adult Native American</b>	<b>White</b>	<b>Native American</b>	<b>Black</b>
BE 31	1,555	3.1%	95.8%	1.6%	93.3%	0.8%
BE 93	2,489	11.0%	93.2%	1.9%	86.0%	0.0%
CI 2	357	79.3%	10.2%	14.5%	5.1%	0.0%
CI 3	165	83.3%	3.0%	11.4%	3.0%	0.8%
CI 4	958	20.4%	16.7%	63.8%	14.0%	0.5%
CI 6	164	26.1%	17.4%	55.8%	13.0%	0.0%
CI 9	2,720	48.7%	16.2%	33.2%	14.3%	2.4%
CI 10	1,366	53.4%	19.7%	26.4%	17.5%	0.9%
CI 11	1,533	54.3%	12.3%	33.4%	9.8%	1.3%
CI 12	743	40.2%	9.4%	45.5%	8.3%	1.9%
CI 16	628	39.6%	9.9%	48.8%	7.6%	1.7%
CI 17	3,014	2.0%	97.6%	1.6%	95.6%	0.0%
CI 18	456	67.6%	16.3%	19.4%	9.7%	0.6%
CI 19	800	48.4%	9.1%	39.2%	8.4%	3.4%
CI 20	1,262	3.4%	97.4%	1.3%	94.2%	0.0%
CI 21	810	4.2%	97.2%	1.0%	93.9%	0.0%
CI 22	563	2.9%	96.8%	1.2%	93.9%	0.2%
CI 23	205	6.4%	95.5%	0.6%	91.1%	0.6%
CI 24	786	4.1%	93.5%	2.7%	91.0%	0.4%
CI 25	476	6.0%	96.7%	2.1%	89.9%	0.0%
MC 11	406	2.0%	98.3%	0.3%	97.6%	0.0%
MC 12	1,248	1.8%	94.7%	4.0%	92.7%	0.1%
MC 14	1,767	5.9%	87.5%	8.4%	84.8%	0.0%
MC 16	957	4.9%	89.4%	7.3%	87.0%	0.5%
SJ 15	1,016	1.9%	98.8%	0.9%	96.2%	0.0%
SO 15	1,542	2.6%	94.4%	4.2%	91.9%	0.0%
VA 13	824	11.2%	91.0%	4.3%	83.1%	0.0%
<b>District Totals</b>	<b>28,810</b>	<b>20.7%</b>	<b>65.1%</b>	<b>15.3%</b>	<b>62.1%</b>	<b>0.7%</b>